

Specifications

Model	Z-80/60	
Measurements	US	Metric
Working height maximum*	84 ft	25.77 m
Platform height maximum	78 ft	23.77 m
Horizontal reach maximum	60 ft	18.29 m
Up and over clearance maximum	29 ft	8.83 m
Below ground reach	15 ft 10 in	4.83 m
A Platform length - 8 ft / 6 ft	3ft/2ft 6in	0.91m/0.76m
B Platform width - 8 ft / 6 ft	8ft/6ft	2.44m/1.83m
C Height - stowed	9 ft 10 in	3.00 m
D Length - stowed	37 ft	11.27 m
E Length - transport	37 ft	11.27 m
F Width	8 ft 2 in	2.49 m
G Wheelbase	9 ft 4 in	2.85 m
H Ground clearance - center	12 in	0.30 m

Productivity

Lift capacity	500 lbs	227 kg
Platform rotation	160°	
Vertical jib rotation	135°	
Turntable rotation	360° continuous	
Turntable tailswing - riser up	3 ft 10 in	1.17 m
Turntable tailswing - riser down	7 ft 4 in	2.24 m
Drive speed - stowed	3.0 mph	4.83 km/h
Drive speed - raised**	0.68 mph	1.1 km/h
Lift speed to full height	76 sec	
Gradeability - 2WD - stowed***	30%	
Gradeability - 4WD - stowed***	45%	
Turning radius - 2WS inside	14 ft 6 in	4.42 m
Turning radius - 2WS outside	24 ft 6 in	7.47 m
Turning radius - 4WS inside	7 ft	2.13 m
Turning radius - 4WS outside	15 ft	4.57 m
Controls	12 V DC proportional	
Tires	18-625 NHS	

Power

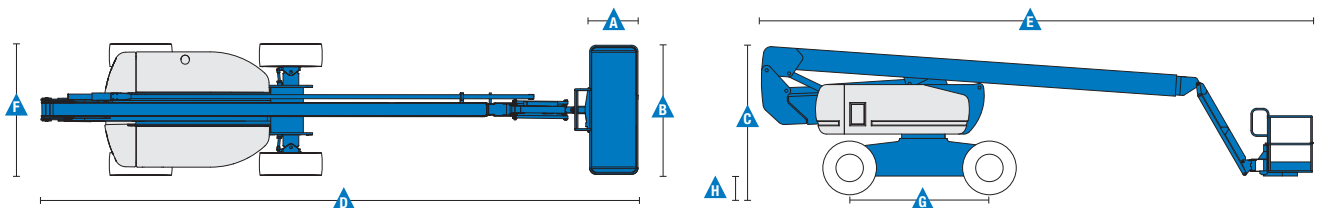
Power source	Deutz TD 2011 L04i 4 cylinder diesel 74 hp (55 kW) Perkins 804D-33 4 cylinder diesel 63 hp (47 kW) Continental TME27 4 cylinder gas/LPG 74 hp (55 kW)
Auxiliary power unit	12 V DC
Hydraulic tank capacity	45 gal / 170 L
Fuel tank capacity – diesel machines	35 gal / 132 L
Fuel tank capacity – gas/LPG machines	30 gal / 114 L

Weight****

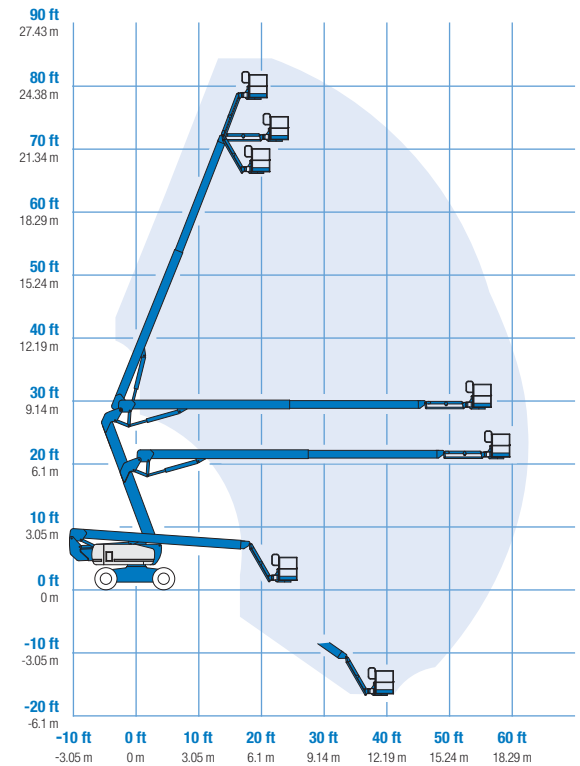
2WS	35,900 lbs / 16,284 kg
4WS	37,500 lbs / 17,010 kg

Standards Compliance

«ANSI A92.5, CSA B354.4, EN 280, AS 1418.10



Range Of Motion Z-80/60



* The metric equivalent of working height adds 2 m to platform height. U.S. adds 6 ft to platform height.

** In lift mode (platform raised), the machine is designed to operate on firm, level surfaces only.

*** Gradeability applies to driving on slopes. See operator's manual for details regarding slope ratings.

**** Weight will vary depending on options and/or country standards.

Features

Standard Features

Measurements

- 84 ft (25.77 m) working height
- 60 ft (18.28 m) horizontal reach
- 29 ft (8.83 m) up and over clearance
- Up to 500 lb (227 kg) lift capacity

Productivity

- 6 ft (1.83 m) jib with 135° range
- Self-leveling platform
- Hydraulic platform rotation
- Fully proportional Hall effect controls
- On board diagnostics
- ALC 1000 electronic control system
- Hydraulic oil cooler
- Drive enable
- AC power cord to platform
- Horn
- Hour meter
- Tilt alarm
- Descent alarm
- 360° continuous turntable rotation
- Locking turntable covers
- Full-time positive traction drive
- Two speed wheel motors
- Four steering modes: front, rear, crab and coordinated
- Configurable controls to limit lift height to 70 ft

Power

- 12 V DC auxiliary power
- Anti-restart engine protection
- Auto engine fault shutdown
- Engine monitoring display
- Block heater (Continental engine)
- Dual battery
- Engine status display

Easily Configured To Meet Your Needs

Platform Options

- Steel 8 ft (2.44 m) (standard)
- Steel 6 ft (1.83 m)
- 8 ft (2.44 m) tri-entry

Jib

- 6 ft (1.83 m) jib boom

Engine Options

- Deutz diesel 74 hp (55 kW)
- Perkins diesel 63 hp (47 kW)
- Continental gas/LPG 74 hp (55 kW)

Drive/Steer Options

- 4WD (standard)
- 2WS (standard)
- 4WS

Axle

- Active oscillation

Tire Options

- Rough terrain foam-filled (standard)
- Rough terrain non-marking foam-filled
- High flotation rough terrain

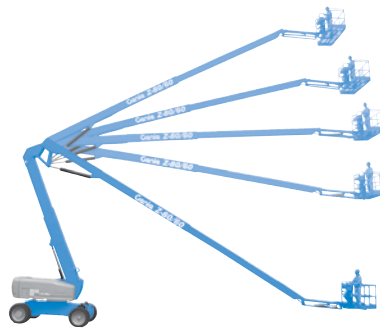
Options & Accessories

Productivity Options

- Platform swing gate
- Half-mesh platform inserts with swing gate
- Platform top auxiliary rail
- Arc Pro 275™ Heavy-Duty Welder package
- Welder Ready package
- Weld leads to platform
- Air line to platform
- Biodegradable hydraulic oil
- Hostile environment package
- Deluxe hostile environment package
- Thumb rocker steer
- Aircraft protection package (6 ft platform only)
- Tool tray
- Pipe cradles (pair)
- Alarm package
- Lockable platform control box covers
- Work light package

Power Options

- AC generator packages (110V/60Hz - 220V/50Hz, 3000W)
- Cold Weather Packages
- Diesel scrubber/spark arrestor (catalytic muffler)
- LPG tank only, steel, 33.5 lb (15.19 kg) capacity



Genie United States

18340 NE 76th Street
P.O. Box 97030
Redmond, Washington 98073-9730
Telephone +1 (425) 881-1800
Toll Free in USA/Canada +1 (800)-536-1800
Fax +1 (425) 883-3475

Genie Europe

The Maltings
Wharf Road
Grantham NG31 6BH
UK
Telephone +44 (0)1476 584333
Fax +44 (0)1476 584334
Email: AWP-InfoEurope@terex.com

Distributed By:

Effective Date: February, 2012. Product specifications and prices are subject to change without notice or obligation. The photographs and/or drawings in this document are for illustrative purposes only. Refer to the appropriate Operator's Manual for instructions on the proper use of this equipment. Failure to follow the appropriate Operator's Manual when using our equipment or to otherwise act irresponsibly may result in serious injury or death. The only warranty applicable to our equipment is the standard written warranty applicable to the particular product and sale and we make no other warranty, express or implied. Products and services listed may be trademarks, service marks or trade names of Terex Corporation and/or their subsidiaries in the USA and many other countries. Genie is a registered trademark of Terex South Dakota, Inc. © 2012 Terex Corporation.