



Machine shown may have optional equipment

Summary of features

- *Lift capacity of 35,000 lb/15,900 kg*
- *Reach to 40 ft./12.2 m*
- *Full lift capacity over 360 degrees*
- *165 H.P.(123 kW) Turbo diesel engine*
- *Four wheel drive with 6-speed Powershift transmission located on the carrier*
- *Four heavy duty hydraulically actuated stabilizers*
- *Large 140 gallon US / 530 litres fuel tank for extended shifts*
- *Forestry designed booms and sticks for handling all types of wood*
- *Human engineered cab for operator comfort and safety*



WHEEL LOG LOADER WL150

Engine

165 H.P. (123 kW) @ 2,200 RPM.

Isuzu 6BGITQW-6.5L Turbo 4 stroke-cycle diesel engine with six cylinders. Glow plugs. Engine coolant heater, 120V. Engine self-cleaning prefilter. Engine speed and pump flow are electronically controlled.

Variable displacement hydraulic system

One double piston pump and one double gear pump.

Piston pump flow of 105 gpm (462 l/min).

Operating pressures:

- Steering 1,250 lb/psi (8,620 kPa)
- Pilot circuit 400 lb/psi (2,760 kPa)
- Travel 4,400 lb/psi (30,340 kPa)
- All others 4,200 lb/psi (28,960 kPa)

Cylinder bore, stroke and rod diameter:

- Main boom (2) 4 1/2 X 53 1/2 X 3 1/4 in.
(114 X 1,359 X 83 mm)
- Stick boom (1) 6 X 39 X 4 in.
(152 X 991 X 102 mm)
- Heel boom 4 1/2 X 29 X 3 in.
(114 X 736 X 76 mm)
- Stabilizers (4) 5 1/2 X 22 X 3 1/2 in.
(140 X 559 X 89 mm)

Hydraulic oil cooler.

Oil tank immersion heater, 120 V.

Three return oil filters, pilot pressure and transmission pressure circuit oil filters with restriction indicators.

One brake circuit pressure filter.

One filter for machine drain lines.

Hydraulic system test points.

Hydraulic tank gauge.

Drive

Six speed forward and three reverse Powershift transmission located on the carrier. Power is provided by one hydraulic piston motor, direct mounted. Electric transmission shifting. Gear is selected by a shifter on the operator's console.

Travel speed:

- 1st.....1.5 mph (2.44 km/h)
- 2nd.....2.7 mph (4.6 km/h)
- 3rd.....3.5 mph (5.7 km/h)
- 4th.....6.2 mph (10.0 km/h)
- 5th.....8.9 mph (14.0 km/h)
- 6th.....15.7 mph (25.0 km/h)
- Drawbar pull.....34,000 lb (15,450 kg)

Axles

- Planetary axles, front and rear.
- Wheelbase 120 in.(3.65 m).
- Tires (4) 16 ply - 17.5 X 25.
- Rear differential lock on request.

Brakes

Hydraulically operated multiple wet disk brakes on rear wheels.

Hydraulically operated disc brakes on front wheels.

Parking brake on rear differential input shaft.

Parking brake is automatically applied upon loss of hydraulic oil pressure.

Steering

Front steering axle with dual hydraulic cylinder. 14 in. (356 mm) steering wheel.

- Inside turning radius of 29 ft (8.8 m).

Stabilizers

Four heavy-duty hydraulically actuated stabilizers activated by rocker switches on the operator's console.

Lock valves prevent cylinder drift in both directions.

Four way knuckle on stabilizer pads 16 x 21 in (406 x 533 mm).



Cab

52 in. X 60 in. (1,321 mm X 1,524 mm) left side mounted with rear access, human engineered cab for safety and comfort. Cab is equipped with air conditioning, pressurizer and AM-FM cassette player.

Fully adjustable comfortable seat with armrests.

Excellent visibility due to adjustable height of the cab and ample windshield area.

Cab is supplied with safety glass, front with protective screen, side windows, left one used as emergency escape, Lexan skylight, wiper, and cab heater located under operator's seat. Complete instrument panel with engine oil pressure, engine coolant temperature, electric fuel gauge, hydraulic oil temperature and pressure, voltmeter and tachometer.

Warning lights for brake system low oil pressure and restriction in transmission pressure filter.

Electrical system

- 24 volts DC with 60 ampere alternator.
- 2 x 12 V batteries.
- Main disconnect switch.

Controls

All loader functions are operated by two hydraulic joysticks and rocker switches located on the joysticks. Pilot pressure control valve is located under left seat armrest.

Swing

Continuous rotation on a 54 in. (1 371 mm) turntable bearing with external gear. One piston type hydraulic motor is mounted on planetary gearbox.

Tailswing: 9'-3" (2.82 m).

Swing lock

Electro-hydraulic parking brake mounted on planetary gearbox and activated by rocker switch on operator's console.

Weight

Shipping weight including all lubricants and 10% fuel in S-40 configuration without grapple.

- 54,000 lb (25,000 kg).

Refill capacities

	US GALLONS	LITRES
Fuel tank	140.0	530.0
Cooling system	17.6	66.8
Engine oil	5.7	21.5
Swing planetary	1.8	7.0
Hydraulic tank	95.0	360.0

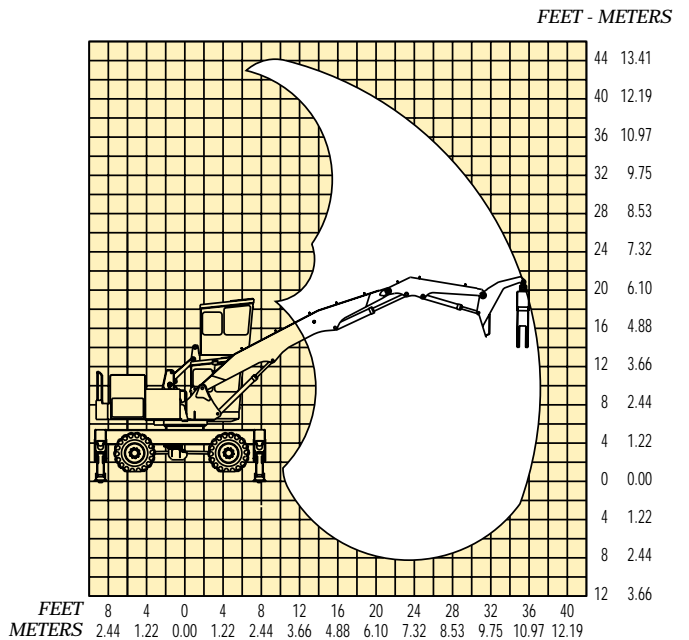
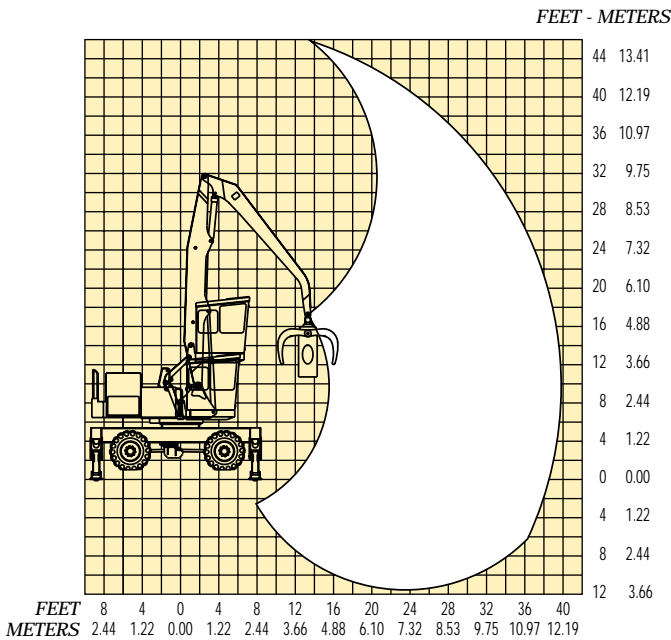
Optional Equipment

- Booms with optional sticks, heel type (Y) and shortwood (S) applications.
- Different grapples from various manufacturers for all applications.
- Fire protection system.
- 600/55 X 26.5 tires and wheels.
- Supplemental steering.
- Spare rim.
- Main and stick boom cylinder guards.
- Side lights.
- Tow hook.
- Cummins 6QSB-5.9L electronic engine.



“S” type 40 feet /12.2 m of reach

“Y” type 37 feet/11.28 m of reach

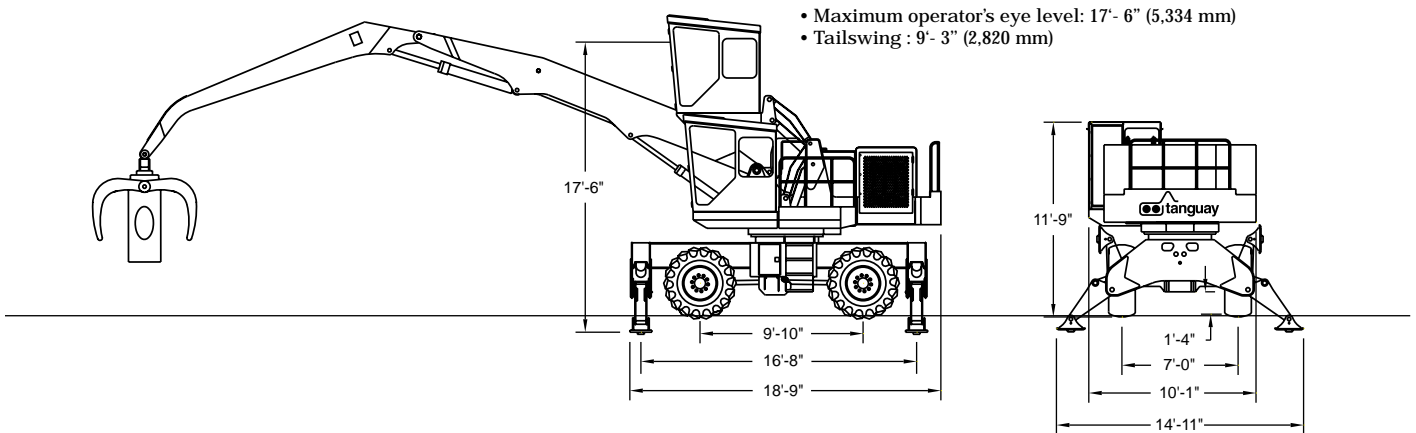


Lifting capacities and general dimensions

Reach	(ft)	10'	15'	20'	25'	30'	35'	40'
	(m)	3.00	4.57	6.10	7.62	9.14	10.67	12.19
Capacity *	(lb)	35,000	22,000	15,500	12,100	10,000	8,500	3,090
	(kg)	15,900	10,000	7,000	5,500	4,545	3,850	6,800

* Lifting capacity is net at end of boom. Weight of grapple to be deducted. Based on 100% hydraulic capacity. Based on standard “S” type boom.

Basic dimensions: (S-40)



Tanguay is a registered trademark of Tanguay Industries/A Division of The Canam Manac Group Inc. Specifications are subject to change without notice or obligation.



A division of The Canam Manac Group Inc.
447, rue Principale, Saint-Prime, QC G8J 1S1
Telephone : (418) 251-3152 • Fax : (418) 251-1110
Internet : www.tanguayindustries.com

Distributed by :