

# KOMATSU®

## WA50-6

NET HORSEPOWER

28.7 kW **38.6 HP** @ 2400 rpm

OPERATING WEIGHT

3675 - 3825 kg **8,100 - 8,430 lb**

BUCKET CAPACITY

0.6 m<sup>3</sup> **0.78 yd<sup>3</sup>**

**WA**  
**50**

COMPACT  
WHEEL LOADER



Photo may include optional equipment.

# **WALK-AROUND**

## ***Performance and Versatility***

- 3-mode traction control: P mode / N mode / S mode
- Electric auto-leveler for bucket
- Floor-mounted inching pedal
- Rear axle oscillation (14°) - Provides improved stability and grading performance
- Auxiliary front hydraulics - 46.5 ltr/min **12.2 U.S. gal/min**

## ***Service and Maintenance***

- Fully opening engine hood provides outstanding service access
- Filters are remote mounted for easy access
- Side-by-side radiator and oil cooler
- Automatic air bleeding fuel system
- Extended lubrication and maintenance intervals

## ***Operator Comfort***

- Adjustable suspension seat
- Large walkthrough platform
- 2-post ROPS/FOPS Level 1 canopy provides excellent visibility
- Cab option with pillar-less front and rear glass
- Cab available with heat/defrost and optional A/C



KOMTRAX equipped machines can send location, SMR and operational maps to a secure website utilizing wireless technology.



## NET HORSEPOWER

28.7 kW **38.6 HP** @ 2400 rpm

## OPERATING WEIGHT

3675 - 3825 kg **8,100 - 8,430 lb**

## BUCKET CAPACITY

0.6 m<sup>3</sup> **0.78 yd<sup>3</sup>**



Photos may include optional equipment.

### *Value, Durability, and Strength*

- KOMTRAX® wireless equipment monitoring system
- Durable center hinge tapered roller bearings
- “Delta boom” loader design improves visibility of work equipment
- Long wheelbase (1900 mm **6' 3"**) improves ride quality
- Wrap-around counterweight protects machine

### *Peace of Mind*

- 2-post ROPS/FOPS Level 1 canopy
- ROPS cab
- Sealed wet-disc brakes
- Excellent visibility enhances jobsite awareness
- Low emission Komatsu engine
- Low noise

# OPERATOR ENVIRONMENT

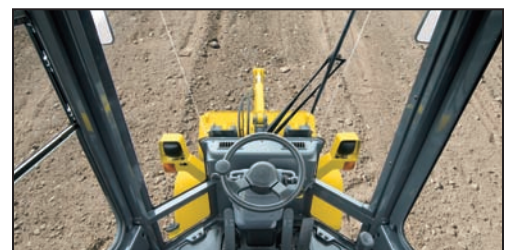


## *Operator Station*

- Adjustable suspension seat
- Spacious canopy/cab provides the operator with ample legroom
- 2-post ROPS/FOPS Level 1 canopy provides outstanding visibility
- Single-lever bucket control
- Electric forward/reverse selector lever
- Floor-mounted inching pedal gives the operator excellent simultaneous control of travel and equipment hydraulic speeds
- Cab option with pillar-less front and rear glass for excellent visibility
- Heat/defrost, front and rear working lights, rear wiper, and switch panel come standard with the cab option. Air conditioner is available as an option.



Cab option

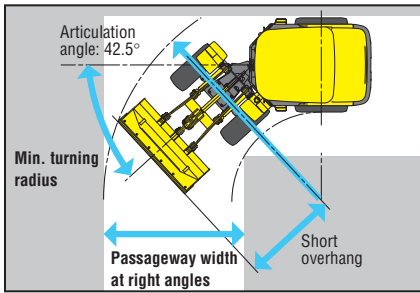


Pillar-less front glass



Easy-to-clean floor mat flush with the entrance frame

# FEATURES



## Easy operation even in narrow spaces

- Short overhang structure
- Increased articulation angle: 42.5°
- Min. turning radius (outer): 3825 mm 12'7"
- Passageway width at right angles: 2460 mm 8'1" (Machine with standard specifications)



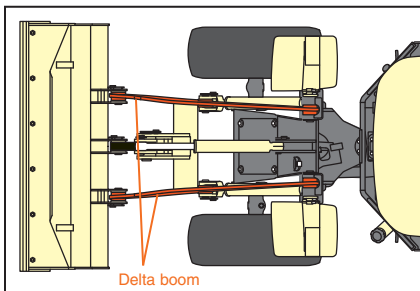
## Wrap-around counterweight

The large counterweight helps protect the main body. Also, the rear combination lamps and exhaust pipes are built into the counterweight for added protection.



## Easy-to-maintain design

- Single-touch fully opening hood
- Remote and collective arrangement of filters
- Automatic air bleeding fuel system
- Tapered roller bearings have a 1,000 hour greasing interval



## New boom design permitting excellent front visibility

The machine features a new "Delta boom" that improves visibility of the front tires and bucket from the operator's seat.



## Electric auto-leveler allows easy operation of the bucket

When the bucket is lowered to the ground, the bucket bottom becomes level automatically.



## Side-by-side cooling system

The oil cooler and radiator are installed side-by-side for ease of cleaning and inspection. This also ensures fresh air reaches each component.

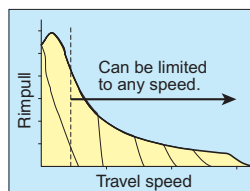
## Electronic-control Hydrostatic Transmission (HST)

The electronic-control HST allows the operator to accelerate and stop the machine by using the accelerator pedal. Maximum travel speed can be adjusted by using the stepless speed control dial. The maximum rimpull can be set to one of 3 modes by using the traction control switch tailoring the machine to operating conditions.



### Speed control function

Travel speed ranges can be set from 3 to 15 km/h 1.9 to 9.3 mph using the speed control dial. Max speed is infinitely variable up to 15 km/h 9.3 mph giving the operator optimal control.

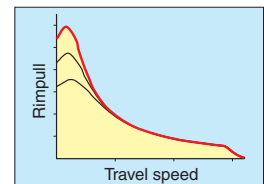


### Traction control function

Maximum rimpull can be set to any of 3 levels depending on the application.

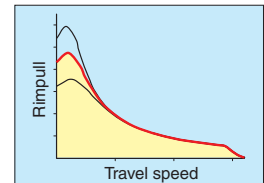
### P mode

Appropriate for operations requiring an extra burst of rimpull on demand such as ground leveling, grading, excavating and piling.



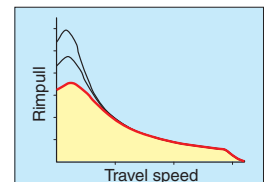
### N mode

Appropriate for loading operations such as V-shape loading, aggregate loading and load-and-carry.



### S mode

Appropriate for operations carried out on soft and slippery ground such as snow and mud.





# SPECIFICATIONS



## ENGINE

Model	Komatsu 4D88E-6B*
Type	Water-cooled, 4-cycle
Number of cylinders	4
Bore x stroke	88 mm x 90 mm <b>3.48" x 3.56"</b>
Piston displacement	2.189 ltr <b>135 in³</b>
Governor	Mechanical, all-speed control
Horsepower	
SAE J1995	Gross 29.7 kW <b>39.8 HP</b>
ISO 9249 / SAE J1349	Net 28.7 kW <b>38.6 HP</b>
Rated rpm	2400 rpm
Fuel system	Direct injection
Lubrication system	
Method	Gear pump, force-lubrication
Filter	Full-flow
Air cleaner	Dry-type with single radial-sealed element and dust evacuator, plus dust indicator

\* EPA Tier 3 and EU Stage 3A emissions certified.



## TRANSMISSION

Transmission	Hydrostatic, 1 pump, 1 motor variable speed control
--------------	---



## AXLES AND FINAL DRIVES

Drive system	Four-wheel drive
Front	Fixed, semi-floating
Rear	Center-pin support, semi-floating
	14° total oscillation
Reduction gear	Spiral bevel gear
Differential gear	Conventional
Final reduction gear	Planetary gear, single reduction



## BRAKES

Service brakes	Mechanical, wet, multi-disc brakes actuate on four wheels
Parking brake	Mechanical, wet, multi-disc brake on transfer output shaft



## KOMTRAX

- Level 2 Satellite Monitoring System
- E-mail / text notifications
- Location (daily and movement)
- Hour meter
- Daily operation times
- Out of area notice
- Engine start attempt during lockout period notice
- Forced engine lock / unlock
- Night / scheduled lock
- Residual fuel quantity
- High water temperature level
- Cautions
- Abnormalities



## BUCKET CONTROLS

Control positions	
Boom	Raise, hold, lower, and float
Bucket	Tilt-back, hold, and dump



## HYDRAULIC SYSTEM

Capacity (discharge flow) @ engine rated rpm	
Maximum flow for loader circuit	
Loader pump	46.5 ltr/min <b>12.2 U.S. gal/min</b>
HST charge pump	24 ltr/min <b>6.3 U.S. gal/min</b>
Auxiliary hydraulic flow	46.5 ltr/min <b>12.2 U.S. gal/min</b>
Relief valve setting	
Loader	210 kg/cm² <b>3,000 psi</b>
Steering	175 kg/cm² <b>2,500 psi</b>
Control valve	3-spool open center type
Hydraulic cylinders	
Loader and steering	Double-acting, piston type
Hydraulic cycle time (rated load in bucket)	
Raise	5.7 sec
Dump	1.0 sec
Lower (empty)	3.5 sec
Total cycle time	10.2 sec



## SERVICE REFILL CAPACITIES

Cooling system	7.0 ltr	<b>1.8 U.S. gal</b>
Fuel tank	50 ltr	<b>13.2 U.S. gal</b>
Engine	7.5 ltr	<b>2.0 U.S. gal</b>
Hydraulic system	42 ltr	<b>11.1 U.S. gal</b>
Axle (front / rear)	4.8 / 4.5 ltr	<b>1.3 / 1.2 U.S. gal</b>
Transmission	1.4 ltr	<b>0.4 U.S. gal</b>

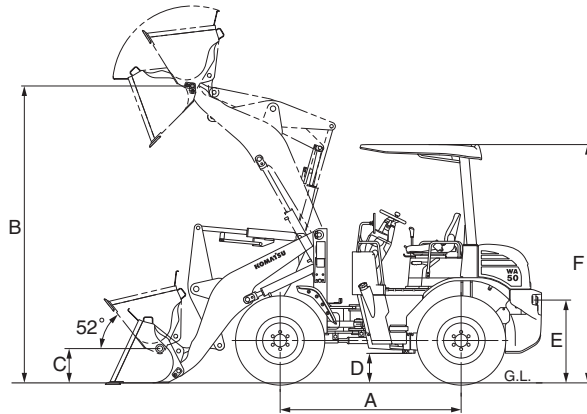


## STEERING SYSTEM

Type	Full-hydraulic power steering independent of engine rpm
Steering angle	42.5° each direction
Minimum turning radius at the center of outside tire	3125 mm <b>10'3"</b>



## DIMENSIONS



	Tread	1250 mm	4'1"
	Width over tires	1650 mm	5'5"
A	Wheelbase	1900 mm	6'3"
B	Hinge pin height at max. height	3120 mm	10'3"
C	Hinge pin height at carry position	360 mm	1'2"
D	Ground clearance	310 mm	1'0"
E	Hitch height	470 mm	1'7"
F	Overall height, ROPS (canopy / cab)	2500 mm / 2540 mm	8'2" / 8'4"

Measured with 15.5/60-18-8PR tires

Bucket		Stockpile bucket with bolt-on cutting edge	
Bucket capacity	Heaped	0.6 m <sup>3</sup>	0.8 yd <sup>3</sup>
	Struck	0.5 m <sup>3</sup>	0.7 yd <sup>3</sup>
Bucket width		1690 mm	5'7"
Bucket weight (with B.O.C.E.)		215 kg	475 lb
Static tipping load	Straight (canopy / cab)	2450 kg / 2580 kg	5,400 lb / 5,690 lb
	Full turn (canopy / cab)	2000 kg / 2100 kg	4,410 lb / 4,630 lb
Dumping clearance, maximum height and 45° dump angle**		2475 mm	8'1"
Reach at maximum height and 45° dump angle**		900 mm	2'11"
Reach with arm horizontal and bucket level**		1945 mm	6'5"
Operating height, fully raised		3955 mm	13'0"
Overall length, bucket on ground		4580 mm	15'0"
Turning radius @ outside corner of bucket*		3825 mm	12'7"
Digging depth	0°	43 mm	2"
	10°	175 mm	7"
Breakout force		3050 kg	6,720 lb
Operating weight (canopy / cab)		3675 kg / 3825 kg	8,100 lb / 8,430 lb

\* Bucket at carry, outside corner of bucket. \*\*At the end of B.O.C.E.

All dimensions, weights, and performance values based on SAE J732c and J742b standards. Static tipping load and operating weight shown include lubricant, coolant, full fuel tank, ROPS cab and operator. Machine stability and operating weight affected by counterweight, tire size, and other attachments.



## STANDARD EQUIPMENT

- 2-post ROPS/FOPS Level 1
- 3-spool valve for boom, bucket and attachment control
- Alternator, 40A, 12 volt
- Axles, semi-floating
- Back-up alarm
- Back-up light
- Batteries, 40 Ah x 12 V
- Bucket positioner, automatic
- Counterweight
- Engine, Komatsu 4D88E-6B
- Engine shut-off system, electric
- Engine fuel filter with water separator
- Fan
- Fenders, rear
- Gauges (Engine water temperature, fuel level)
- Horn, electric
- Indicator lights (Transmission neutral indicator, parking brake warning, battery charge, HST oil filter clogging, engine oil pressure, engine pre-heater, parking brake reminder, HST oil temperature, central warning)
- Lift cylinders and bucket cylinder
- Lights
  - Headlights (2)
  - Stop and tail
  - Turn signal (2 front, 2 rear)
  - Working (2 front, 2 rear)(cab)
- Loader linkage with standard lift boom
- Maintenance monitor panel
- Mono-lever loader control
- Parking brake, wet disc
- Seat belt, retractable 2" wide
- Seat, adjustable suspension
- Service brakes, mechanical, wet multi-disc, inboard
- Starting aid, intake manifold preheater
- Starting motor, 2.3 kW/12 V
- Steering wheel, rigid
- Tires, 15.5/60-18-8PR (L2), tubeless and rims
- Transmission (Hydrostatic), automatic
- Transmission control, electric, steering column



## OPTIONAL EQUIPMENT

- Air Conditioner - fresh air type 48800 kcal **12,300 btu/hr**
- Bucket, 0.60 m<sup>3</sup> **0.78 yd<sup>3</sup>** with BOCE (Pin-On Mount)
- Bucket, 0.60 m<sup>3</sup> **0.78 yd<sup>3</sup>** with BOCE (SSL Style Mount)
- Cab (ROPS) with dome light, floormat, fresh air type heater 52000 kcal **13,100 btu/hr** and defroster, front and rear wiper/washer, front and rear working lights, rear view mirrors (2 outside, 1 inside), right hand and left hand door access with steps
- Coupler - Mechanical SSL / Universal style
- Coupler - Hydraulic SSL / Universal style
- Coupler - Hydraulic Kit (To convert Mechanical to Hydraulic)
- Forks, 1220 mm **48"** with Back Guard (SSL Style Mount)

KUSS196-01

©2009 Komatsu America Corp.

Printed in USA

D06(5M)C

06/09 (EV-1)

# KOMATSU®