



# W14 Wheel Loader



# W14:

## the right combination of features

### **1¼ - 1¾ yd<sup>3</sup> (.97 - 1.34m<sup>3</sup>) bucket capacity**

The W14 is the loader suited to a variety of applications. Loading trucks and hoppers, stockpiling and general utility work are where the W14 earned its reputation. The W14 has the combination of features that's tough to beat.

### **83 net hp (61.9 kW)**

Case-built diesel delivers 83 net hp (61.9 kW) at low 2200 rpm. Proven combination of fast response for quick acceleration, and high torque for crowding the pile or bank.

### **Four forward, two reverse powershift**

A single lever controls speed range and direction. Modulation permits directional

changes on-the-go for fast cycles. Transmission automatically shifts between 1st and 2nd, 3rd and 4th to reduce operator effort during load-and-carry operations.

### **Wheelbase**

100" (2.54 m) wheelbase helps smooth the ride during load-and-carry operations, increasing productivity. A short turning radius of 16'3" (4.94 m) complements the advantages of the long wheelbase with added maneuverability at low speeds.

### **Tread**

68" (1.73 m) tire tread provides a firm platform for loading and stability on uneven terrain. It's a tough combination — a long, wide stance plus a short turning radius.

### **Lift height**

With a dump clearance of 9'1" (2.77 m) the W14 has little trouble clearing the side boards of most trucks or reaching into hoppers.

### **Breakout force**

W14 equipped with 1¼ yd<sup>3</sup> (.97 m<sup>3</sup>) general purpose bucket has 14,022 lbs (6360 kg) of breakout force. 12,361 lbs (5607 kg) equipped with 1.5 yd<sup>3</sup> (1.15 m<sup>3</sup>) general purpose bucket. The W14 has the hydraulic power for bank excavating or loading heavy stockpile material.



# Power train and brakes

## 83 net hp (61.9 kW)

Case-built 336 in<sup>3</sup> (5506 cm<sup>3</sup>) displacement, 4-cylinder diesel with open chamber design and direct injection. Five main bearings absorb load on crankshaft. Cast iron engine block features heavy rib supports in high stress areas. Corkscrew intake port design forces air to enter combustion chamber in a swirling motion providing clean, efficient combustion and fuel economy.

## Powershift transmission

4-speed forward, 2-speed reverse powershift transmission with modulated clutching. On-the-go directional shifting keeps engine speed up, hydraulics cycling fast for added productivity. Single lever transmission control. Shifting from first to second in low and third to fourth in high is done automatically.

## Torque proportioning differentials

Standard on **both** axles, are an advantage in slippery or soft ground conditions. If a wheel starts to spin out, up to 24% of the torque available to that axle automatically transfers to the wheel with the firmest footing. On firmer ground, torque proportioning differentials reduce costly tire spin.

## Outboard-mounted planetary final drives

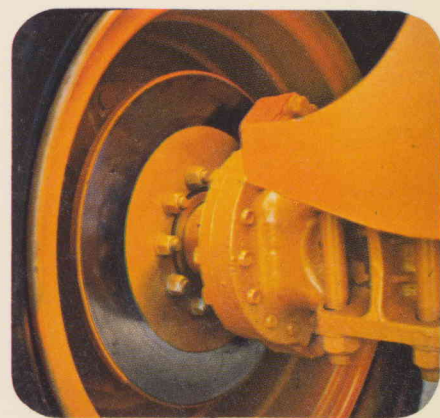
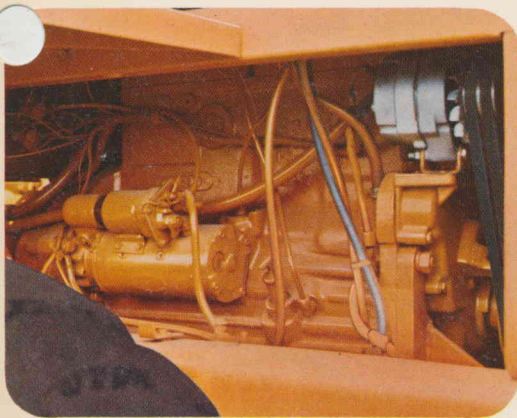
Final gear reduction occurs at the ends of each axle through planetary gear sets. Outboard mounting relieves axle shafts from carrying high torque loads to the wheels and makes planetaries easily accessible. Helps reduce maintenance time and servicing procedures.

## Brakes

Choose the braking system best for you. 4-wheel, air over hydraulic, internal expanding, shoe-type brakes; or self adjusting, self cleaning 4-wheel caliper disc brakes. Air actuated mechanical parking brake is standard and automatically sets if air pressure drops below effective operating level.

## 24° rear axle oscillation

Rear axle oscillates total of 24° up and down. One wheel can drop up to 14" (356 mm) with all wheels remaining on the ground for maximum traction.



# Maneuverability, visibility and service ease

## 40° center-pivot articulation

Front and rear wheels always track each other, reducing rolling resistance and tire scuffing. When front tires miss an obstacle, so will the rear. 80° total articulation provides the maneuverability needed for working in cramped quarters.

## Up-front operator's compartment

Forward location helps isolate noise and vibration from the operator's compartment. Visibility to the bucket and work area is in a straight line providing optimum operator conditions for loading and dumping.

## In-line loader linkage

Hydraulic cylinders and linkage are in line with the lift arms providing minimum interfer-

ence with operator's vision to the bucket and work area. Torsional motion of components is minimized because stresses are absorbed by components within the same plane.

## Loader controls

Dual lever loader controls are conveniently located at the operator's right. Optional "return to dig" mechanism saves time by automatically returning bucket to preset digging angle. Automatic lift height kickout option stops bucket lift at preset height to help speed truck loading cycles.

## Service

Simplified access to service check points is a time saving benefit of the W14. The radiator grille guard swings open, providing ac-

cess to the batteries. Loader hydraulic components are easy to reach through a large, front-mounted hinged panel. Behind the side panel on the left is the engine oil dipstick. The transmission dipstick is also easily reached from the left side of the machine near the articulation joint. The air filter elements are beneath the engine cowl and can be inspected or exchanged after removing the flush-mounted cover. The filler neck of the fuel tank is easily accessible through the hinged right-hand engine side panel. Trunion grease fittings are remote-mounted, simplifying lubrication. Optional lockup kit is available.



# Operator comfort and convenience

## Pod Cab — The quiet zone

The optional Pod Cab provides operators with an extra measure of comfort from both severe weather conditions, and irritating job-site distractions like noise and dust.

A strong cab frame and integral ROPS/FOPS surround the operator, plus standard interior features add to comfort and ease of operation.

Generous use of sound suppression materials helps isolate and dampen noise and vibration.

Air pressurization and tight sealing windows and doors help keep dust out and fresh, full-filtered air in. Air flow is controlled by a 3-speed blower.

Keylock Dutch-type doors open wide for quick and easy exit or entry from either side. Top and bottom sections latch together or di-

vide so the top can remain open with the bottom half closed.

Other standard items include: contour bucket seat and seat belt, plug-in, tamper-resistant gauges, resettable circuit breakers, ash tray, dome light, tinted front windshield and front wiper.

Additional features are available that add to a more comfortable operating environment. A 2 ton air conditioner and a 36,000 Btu heater provide optimum interior climate control for all seasons. Air flow of both units is controlled by the standard 3-speed blower. A defroster/defogger is also available.

An optional air suspension, bucket seat dampens bumps and jolts that lead to early operator fatigue. The seat manually adjusts to the firmness required by individual operators. An 8-inch (203 mm) fore-to-aft shift and the 3-position back rest accommodate operator height differences.





Form No. UD 92281

Printed in U.S.A.

# Attachments add to W14 versatility

Ask your Case dealer about productive attachments that can widen the application range of the W14. Here are just a few:

**Case 14' (4.27 m) backhoe** — Completely operable from remote console. Quick attach/detach without need for auxiliary craning or lifting equipment. Dig depth, 13' 10.9" (4.24 m). 9 sizes, types of trenching buckets.

**Wood grapples** — Profit in woods, yards and landings with productive loading and easy maneuverability.

**4-in-1® bucket** — 1¼ yd³ (.97 m³). For use in conventional loading, bottom dumping,

scrapping or as a clam shell for picking up unwieldy objects.

**Quick attach/detach coupler system** — For fast, easy interchange of attachments from the operator's station.

**Pipe forks** — Stack, sort, load and store pipe and casings quickly and efficiently.

## A special loader for farm needs

**W14 Feedlot Special** — The ideal loader for handling feed and waste material. Features extended lift arms and 2 yd³ (1.53 m³) buck-

et equipped with quick-attach heavy-duty hydraulic grapple.

Case dealers offer responsible, thoroughly trained service personnel as well as the assurance of fast parts supply through the Case network of computer-linked depots across North America.

## J I Case

A Tenneco Company

Construction Equipment Division  
700 State Street Racine, WI 53404 U.S.A.

