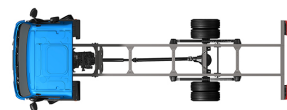


Specification sheet

LF 180

FA 4X2 Rigid, 08t



ENGINES

LF 180 PX-5 (135 kW / 184 hp)

LF 210 PX-5 (157 kW / 213 hp)

LF 230 PX-7 (172 kW / 234 hp)

GVM¹⁾

7500 kg

GCM²⁾

7500 kg

Max. front 3600 kg

Max. rear 5000 kg

CAB EXTERIOR

Day Cab with steel bumper, tinted glass and electric window openers. Main mirrors and wide angle mirrors electrically heated. Cab width 2130 mm.; Green tinted glass; Electrically adjustable mirrors; Mirror brackets, body 2.50-2.60 m; Front view mirror.

Optional

02576 Extended Day Cab	07343 Kerb view window co-driver door
02106 Sleeper Cab	00915 Side no glass / rear single glass
01173 Cab suspension mechanical	09101 Green tinted glass, heated
01605 Cab suspension mechanical reinforced	03605 Mirror brackets, body 2.10-2.29 m
09983 Fog lights	09282 Mirror brackets, body 2.30-2.40 m
09984 Fog lights and cornering lights	09283 Mirror brackets, body 2.40-2.50 m

AERODYNAMICS

Optional

09287 Side collars prepared	07112 Side collars long (set)
04906 Side collars	07093 Side collars short (set)

COLOURS

; Head lamp panel and bumper: Stone Grey; Chassis colour grey..

Optional

06485 Head lamp panel and bumper: cab colour	16153 Cab and chassis colours
---	--------------------------------------

CAB INTERIOR

Right-hand drive (RHD); Mechanically adjustable steering column; Driver seat: air suspended; Co-driver seat: fixed velour; Storage box on engine tunnel.

Optional

01846 Left-hand drive (LHD)	04346 Lower bunk, normal level
09271 Steering wheel, leather, colour black	02213 Air conditioning
03516 Pneumatically adjustable steering column	03703 Auxiliary cab heater Air Top 2000
00967 Seat belts red	04246 Roof hatch, manual control
16158 Seat types	04258 Roof hatch, electric control

COMMUNICATION AND DRIVING MANAGEMENT

FMS connector prepared; Tachograph digital, Stoneridge; Cruise control.

Optional

16155 Audio equipment, makes and types	08891 Adaptive Cruise Control with FCW and AEBs
07261 TruckPhone	

SAFETY AND SECURITY

Lane Departure Warning System; Vehicle Stability Control (VSC); Basic engine immobiliser system.

Optional

08631 Air bag (driver) and 2 seat belt tensioners	06637 Immobiliser 15 minutes and alarm (Thatcham H1)
01725 Reverse warning	16156 EC-ADR packages
06636 Immobiliser 15 minutes (Thatcham H2)	

SUSPENSION AND AXLES

Front: 3.60 t, parabolic, F36; Rear: 5.00 t, parabolic, SR5.14.

Optional

01927 Front springs parabolic raised, Heavy Duty	00369 Rear springs parabolic, asymmetric
07368 Front springs parabolic, Heavy Duty	08031 Rear springs parabolic, Heavy Duty
01372 Rear springs air	01959 Rear springs parabolic, raised
01983 Rear springs parabolic raised, Heavy Duty	

WHEELS AND TYRES

Front axle 1: 215/75R17.5; Rear axle 1: 215/75R17.5; Wheel protection rings silvergrey.

Optional

06764 Wheel protection rings black	16152 Tyre makes and types black
---	---

DRIVELINE

Engine PX-5, 4 cylinder diesel engine, 4.5 litres. Output 135 kW (184 hp) at 2300 rpm. Max. torque 750 Nm at 1100-1600 rpm.; Exhaust emission Euro 6; Engine idle shutdown, 5 minutes; Manual gearbox, 6 speeds; Gearbox ratio 6.58-0.78; Rear axle ratio 3.73.

Optional

08834 AS Tronic gearbox, 6 speeds
--

BRAKE SYSTEM

Exhaust brake.

CHASSIS

Wheelbase 4.30 m / rear overhang 2.32 m; Side member height 210 mm; DPF/SCR unit right, discharge right; Plastic fuel tank 110 l; Spray suppression; AdBlue tank 25 litres, right side chassis.

Optional

02011 Spare wheel carrier in rear overhang	03323 Rear light unit with LEDs
07071 Spare wheel carrier right-hand side	

DRAWBAR AND TRAILER EQUIPMENT

Closing member.

Optional

04212 D-value cross member D=7

BODIES AND PREPARATIONS FOR BODYING

No BodyBuilder Module (BBM); Application connector on the chassis; Standard body attachment hole pattern.

Optional

09952 BodyBuilder Module (BBM) full	07487 Body attachment BAM 1, loose consoles supply
02597 Application connector for tail lift control	07488 Body attachment BAM 3, loose consoles supply
09240 Application connector for refuse collector	01503 Side marker lights
02950 Application connector for hydraulic platform	

POWER TAKE-OFF (PTO)

Optional

06624 Indirect front engine PTO **16148** PTO types and positions

06785 Front engine PTO,
generator preparation
22.5 kW

ELECTRICAL POWER SUPPLY

Alternator 80 A, batteries 2x 125 Ah..

Optional

01897 Alternator 100 A **08797** Batteries 2x175Ah

GVM AND GCM

Chassis weight related technical GVM max 7500 kg; Driveline related technical GCM = GVM+3500 kg.

Optional

03428 Driveline related max GCM 16000 kg **03756** Driveline related technical GCM equal to GVM

00054 Driveline related max GCM 18000 kg

APPLICATION CONDITIONS

Moisture separator, unheated; Air intake low.

Optional

02270 Cold climate **09960** Air intake on the cab roof

04767 Moisture separator, heated **04987** Radiator flyscreen

04482 Air intake high behind cab

SERVICE AND MAINTENANCE

Warranty Plus - 1 Year Vehicle & 3 Year Driveline - takes care of all warrantable repairs on the vehicle for one year and on the driveline for second and third years together with associated breakdown coverage.; DAF 1 year Preventive Maintenance Package - 160k.

VEHICLE DELIVERY

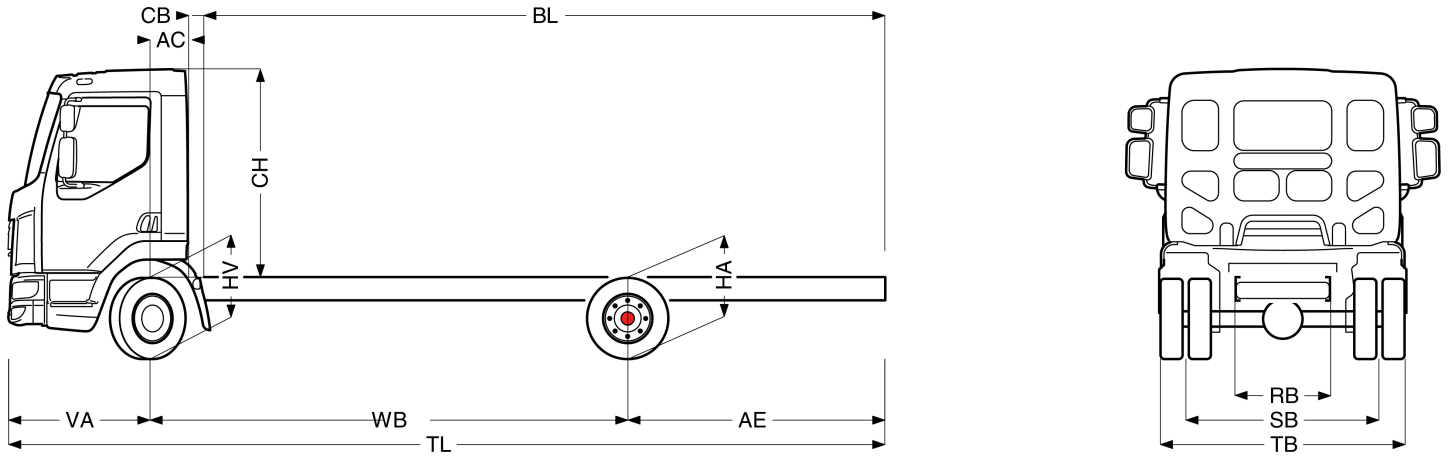
Standard toolkit.



Go to DAF.com to configure your own perfect DAF.

LF 180

FA 4X2 Rigid, 08t



	Wheelbase - AE		Unladen weight ¹⁾			Gross Carrying Capacity			Variable dimensions							
	WB	AE ²⁾	Front	Rear	Total	Front	Rear	Total	AC	CB ³⁾	CH ⁷⁾	BL ⁸⁾	BL	TL	HA ⁹⁾	HA ¹⁰⁾
DAY CAB	3.05	1.80	2467	886	3353	1133	4114	4147	0.33	0.12	1.84	3.53	5.15	6.13	0.89	0.77
	3.15	1.62	2477	874	3351	1123	4126	4149	0.33	0.12	1.84	3.70	5.37	6.18	0.89	0.77
	3.55	1.87	2489	887	3376	1111	4113	4124	0.33	0.12	1.84	4.29	6.18	6.86	0.89	0.77
	3.90	2.12	2499	901	3400	1101	4099	4100	0.33	0.12	1.84	4.80	6.90	7.47	0.89	0.77
	4.30	2.32	2506	908	3414	1094	4092	4086	0.33	0.12	1.84	5.40	7.71	8.16	0.89	0.77
	4.65	2.65	2517	935	3451	1083	4065	4049	0.33	0.12	1.84	5.91	8.19	8.76	0.89	0.77
SLEEPER CAB	5.00	2.72	2528	939	3467	1072	4061	4033	0.33	0.12	1.84	6.44	8.19	9.38	0.89	0.77
	5.40	2.32	2549	921	3470	1051	4079	4030	0.33	0.12	1.84	7.08	8.19	9.92	0.89	0.77
	3.55	1.87	2591	906	3497	1009	4094	4003	0.73	0.07	1.87	3.71	5.66	6.70	0.89	0.77
	3.90	2.12	2602	918	3521	998	4082	3979	0.73	0.07	1.87	4.24	6.40	7.30	0.89	0.77
	4.30	2.32	2611	924	3535	989	4076	3965	0.73	0.07	1.87	4.85	7.24	8.00	0.89	0.77
	4.65	2.65	2623	949	3572	977	4051	3928	0.73	0.07	1.87	5.39	7.84	8.63	0.89	0.77
5.00	2.72	2635	953	3588	965	4047	3912	0.73	0.07	1.87	5.93	7.84	9.27	0.89	0.77	
5.40	2.32	2658	933	3591	942	4067	3909	0.73	0.07	1.87	6.60	7.84	9.92	0.89	0.77	

OTHER DIMENSIONS VA: 1.28 HV¹¹⁾: 0.78 HV¹²⁾: 0.74 RB: 0.86 SB: 1.74 TB: 2.55

- GVM in conformity with registration documents.
- GCM in conformity with registration documents.
- Axle load with standard tyre size.
- Chassis and cab weight calculated with: Standard specification items only with 110 litres of fuel, 25 litres of AdBlue and driver of 90 kg, tolerance $\pm 3\%$. Changing of the specification can have major impact on vehicle weight.
- Other AE dimensions may be available for shown WB. Modify rear overhang to the calculated body length.
- CB is based on standard air intake and/or exhaust.

- Cab height is measured from frame member to closed cabin roof hatch.
- Calculate customer specific body length with TOPEC. Body lengths shown based on evenly distributed load at max axle load.
- Unladen height at centre of driven axle(s).
- Laden height at centre of driven axle(s).
- Unladen height at centre of front axle(s).
- Laden height at centre of front axle(s).

Depending on the vehicle configuration a specific option may not be possible. The availability and specification of this vehicle may differ per country. For further information please contact the DAF organisation. Pictures and technical illustrations are not binding in detail and can differ from the standard specification. Subject to modification without prior notice.