

4-wheel electric tow tractor

TE500RR

Towing Capacity 50000 kg

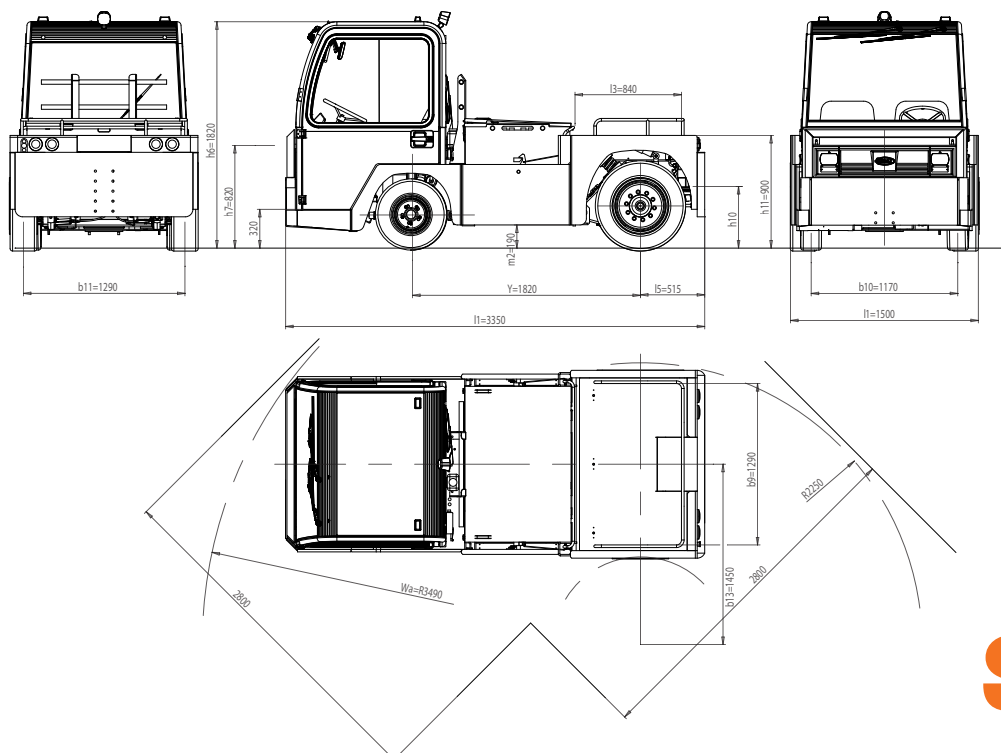


4-wheel tow tractor, man on board, with rear-wheel drive. Heavy-duty high-performance and long-range truck. Loading capacity of wide rear platform 200 kg.

- “Shock resistant” **supporting perimeter chassis** ensures maximum exploitation of induction motor torque.
- **Suspensions:** steel coil springs, stabiliser bar and shock absorbers in the front and in the rear.
- **Drum service brake** acting on 4 wheels - with twofold braking system. Front disk brakes and rear oil-bath multiple-disk brakes. Mechanical lever-type parking brake - negative hydraulic brake available upon request. Preset electrical **braking**, operating automatically when accelerator pedal is released, with first stroke of brake pedal and on reversing direction.
- Standard hydraulic **steering**.
- **2 operators on board.** Comfortable driving position in the front ensures excellent front and rear visibility. Easy access to driving position thanks to low step-on platform.
- **“Man on board” device** with seat occupancy sensor. Available with weather protection roof with front and rear windscreen and electric wipers. PVC canvas doors or cab with hinged or sliding side doors available.

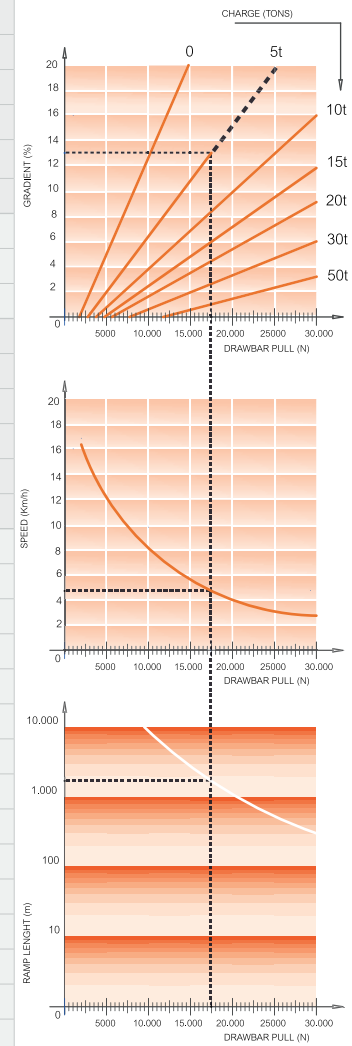
- **Lighting system:** 2 front lights (position/dipped-beam/main-beam), 2 front turn indicators, 2 rear turn indicators, 2 rear lights (position/brake lights), 2 reversing lights. Flashing light and blue lights available upon request.
- **Digital dashboard** with battery charge indicator, fault detection, speedometer and hour meter. Speed selector and light switch. 24 V DC/DC converter for auxiliary services.
- **Induction motor** with through shaft integrated into driveline.
- **Electronic speed control of AC motor** with energy recovery during deceleration and braking. Several towing hitches available. Rear inching control to ease coupling operations.
- **Battery** 80 V 845 Ah fitted behind driving position for fast replacement from above. Standard paint finish: chassis dark grey RAL 7021/body light grey RAL 7035. Other colours available upon request.

All parts are easy to access for fast and effective maintenance. Lower costs due to AC technology and modular design.



FEATURES	1.1	Manufacturer			SIMAI S.p.A.	
	1.2	Model			TE500RR	
	1.3	Drive			Electric	
	1.4	Operator Type			Sitting driver	
	1.5	Load Capacity	Q	t	0,2	
	1.5.1	Towing Capacity	Q	t	50	
	1.7	Rated Drawbar pull	F	N	10000	
	1.9	Wheelbase	Y	mm	1820	
	WEIGHT	2.1	Service weight (w/battery)		Kg	6500
2.2		Axle loading laden front/rear (with operator 80 kg. each)		Kg	3160 / 3700	
2.3		Axle loading unladen front/rear		Kg	3000 / 3500	
TIRES, CHASSIS	3.1	Tyres:Cushion(Cu),Superelastic(SE), Pneus(Pn) Poliurethane (PE)			SE/Pn	
	3.2	Tyre size front			6.50-10	
	3.3	Tyre size rear			250-15	
	3.5	Wheels nr. Front/Rear (X=motive)			2/2X	
	3.6	Tread front	b ₁₀	mm	1170	
	3.7	Tread rear	b ₁₁	mm	1290	
	DIMENSIONS	4.7	Height of roof/cabin	h ₆	mm	1820
4.8		Seat height	h ₇	mm	820	
4.8.1		Step on platform height		mm	320	
4.12		Coupling height	h ₁₀	mm	345 - 425 - 505 - 585	
4.13		Loading height (min / MAX)	h ₁₁	mm	900	
4.16		Platform length	l ₃	mm	840	
4.17		Rear overhang	l ₅	mm	515	
4.18		Platform width	b ₉	mm	1290	
4.19		Overall length	l ₁	mm	3350	
4.21		Overall width	b ₁	mm	1500	
4.32		Ground clearance - centre of wheelbase	m ₂	mm	190	
4.35		Turning radius front	Wa	mm	3490	
4.35.1		Turning radius rear		mm	2250	
4.36		Turning radius inner	b ₁₃	mm	1450	
4.36.1		Aisle width when turning 90°		mm	2800	
PERFORMANCES	5.1	Travel speed laden/unladen		Km/h	7 / 16	
	5.5	Drawbar pull laden		N	-	
	5.5.1	Drawbar pull unladen		N	10000	
	5.6	Max. Drawbar pull laden/unladen		N	- / 29000	
	5.7	Gradeability laden/unladen		%	See chart	
	5.8	Max. Gradeability laden/unladen		%	See chart	
	5.10	Service / Parking brake (I=Hydraulic E=Electromagn. M=Mechanical)			I / M	
5.10.1	Type of service brake front/rear			Disk / wet brakes		
MOTOR	6.1	Drive motor rating S2=60 min		kW	28	
	6.1.1	Hydrauling steering motor rating S2=60 min		kW	1	
	6.3	Battery according to DIN 43531 / 35 / 36 A, B, C, no				no
	6.4	Battery voltage	U	V		80
	6.4.1	Battery rated capacity	K ₅	Ah		840 - 930
	6.5	Battery weighth		Kg		2200 - 2300
	6.6	Energy consumption (VDI cycle)		kWh/h		-
OTHER DATA	8.1	Drive Control			Inverter AC	
	8.4	Sound level at driver's ear according to DIN 12053		dB(A)	69	
	8.5	Towing coupling, type DIN				-

GRADIENT = 13 %
DRAWBAR PULL = 17.500 N
SPEED = 4.8 Km/h
MAX PRACTICABLE RAMP LENGHT = 1600 m



As per VDI guidelines 2198, this datasheet applies to standard electric tractor / platform truck only. Dimensions are not binding and can be changed in any moment. The performances must be intended for brand new machines, after having completed the running-in tested in San Donato Milanese Factory in normal climatic conditions. Performances and weight are to be intended with standard motors and battery (reported in bold) and with pneumatic tires. Some data can vary according to different equipments.

Simai S.p.A.

Via Civesio, 10 • 20097 S. Donato Milanese (MI) • Italy
T +39 02 5278541 • F +39 02 5278544 • info@simai.it • www.simai.it



Simai

0551E0418