

KOMATSU®

SK818-5

NET HORSEPOWER
34.7 kW **47 HP** @ 2800 rpm

OPERATING WEIGHT
2935 kg **6,470 lb**



SK
818

SKID STEER LOADER



Photos may include optional equipment.

GALEO

WALK-AROUND

Easy to use Travel and Loader PPC Joysticks

Low effort Proportional Pressure Control (PPC) joysticks operate travel and loader operations. Easy to use PPC controls help operators of all skill levels work precisely and efficiently all day long – with minimum effort and reduced operator fatigue.

Enhanced Loader Arm and Bucket Control

The hydraulic self leveling (up only) bucket with 1905 kg **4,200 lb** breakout force enhances the productivity of the operator on the job site. The 45° dump and 30° rollback angles of the bucket allow for a faster dump cycle and load retention over rough terrain.

Maximum Performance and Precise Control with HydrauMind™

Komatsu's smooth and precise HydrauMind™ system lets the operator feel the performance of the machine. The Closed Load Sensing System (CLSS) hydraulics are designed for both single and simultaneous movements which achieves unsurpassed control in positioning the bucket.

Optional "Super Flow" Auxiliary Hydraulics

The optional "Super Flow" auxiliary hydraulic circuit enables the SK818 to utilize many high flow attachments. Cold planers, stump grinders, flail mowers and other attachments can be easily operated with the PPC joysticks.

Vertical Lift-arm Design

Komatsu's vertical lift-arm design makes it desirable for loading and unloading operations (especially with pallet forks). The front reach is kept virtually constant throughout the entire lift cycle.

Standard Universal Attachment Quick Coupler

A universal quick coupler enables common attachments to be changed quickly and with little effort. Auxiliary hydraulics with flat faced connectors are standard. Most competitors' attachments can be utilized on Komatsu's skid steer loaders.



Long Wheel Base

The Komatsu SK818 skid steer loader has one of the longest wheel bases in its class, 1050 mm **41.3"**, giving the operator a more stable ride and a better platform for operating high flow attachments.

Automatic Power Control "APC"

Patented Komatsu anti-stall hydraulic system designed to allow full utilization of engine power. The operator can work with full engine power during the toughest job site applications without worrying about engine stall.

Outstanding Visibility

Work with confidence and increased productivity. The standard top and rear shatter resistant windows, large side screen area as well as a superior view of the bucket, cutting edge and corners give the operator excellent 360° job site visibility.

NET HORSEPOWER

34.7 kW **47 HP** @ 2800 rpm

OPERATING WEIGHT

2935 kg **6,470 lb**

1050 mm **41.3"**

Long Wheel Base

"APC"

Automatic Power Control

16.0 kph **10 MPH Max.**

Travel Speed

Intelligent Operator Controls

Komatsu has enhanced operator productivity and efficiency with their technologically advanced operator restraint bar. The operator restraint bar incorporates a LCD gauge panel and warning light system which is easily engaged and acts as a forearm rest. In addition, a Loader Arm Float Function control can be engaged on the joystick for enhanced back dragging or attachment applications.

Two-Speed Travel

This allows for low impact shift-on-the-go speed changes between 10.5 kph **6.5 MPH** work range and 16 kph **10 MPH** travel range. Improves load and carry cycle times and travel times between job sites.



Photos may include optional equipment.

Low Effort and Fine Hydraulic Control

The 62.0 ltr/min **16.1 GPM** auxiliary hydraulics can be metered from 3.7 to 60 ltr/min. **1 to 16 GPM** or locked into continuous flow and the PPC pedal control results in low effort and fine control.

GALEO

Komatsu's highly productive, innovative technology, environmentally friendly machines built for the 21st century.

OPERATORS COMPARTMENT

Superior Engine Control

The engine RPM's can be controlled by either the hand throttle, the foot accelerator, or in combination for tight work sites. The foot accelerator is not available with hand and foot control pattern.

Control Pattern Change Valve Lever - Optional

Convert from the Komatsu pattern to the optional pattern with the flip of a lever. This allows the Komatsu skid steer loader to be customized to meet the individual operator's needs. Especially useful for rental centers or whenever different operators need to use the machine on the job site.

Enhanced Operator Safety

The operator restraint bar is ergonomically designed to provide forearm support and restrains the operator from unintentionally leaving the seat. The seat incorporates a safety switch which de-activates the travel and hydraulic circuits while activating the wet disc brakes when the operator leaves the machine. A 76 mm **3"** seat belt is provided as standard equipment.

Effective Operator Cab Environment

All instrumentation is within the peripheral view of the operator. The function switches are waterproof and placed within easy reach of the operator for comfort and convenience.



Split Designed Operator Restraint Bar

The split designed operator restraint bar is easily engaged from the left and right side respectfully. The gauge panels and indicator lights are incorporated into the restraint bar for enhanced operator efficiency, comfort and confidence.

Enhanced Operator Controls

The gauge panel, warning and indicator lights are mounted on the operator restraint bar. Monitoring of all critical machine functions is easy, convenient and doesn't distract the operator from the job at hand. The control pattern is back lit to identify which pattern is in operation.

**SPLIT DESIGNED OPERATOR
RESTRAINT BAR**

PPC JOYSTICK CONTROLS

**PATTERN CHANGE
VALVE LEVER**

**SUPERIOR OPERATOR
ENVIRONMENT**



PPC Joystick Controls

Another advanced feature is the low effort Proportional Pressure Control (**PPC**) joysticks that operate travel and loader operations. Easy to use PPC controls help operators of all skill levels work precisely and efficiently all day long – with minimum effort and reduced operator fatigue.

Auxiliary Hydraulic Control

The auxiliary hydraulic control provides excellent hydraulic power to front mounted hydraulic attachments. The foot pedal can be utilized with Komatsu or optional control pattern.

SERVICEABILITY

Tilt-Forward ROPS/FOPS, Top Engine Cover & Floor Plate

This patented feature allows the cab to tilt with the loader arms down or up. Access to the engine, hydraulic and hydrostatic components is easily achieved.

250 Hour Pin Greasing Interval

Minimizes daily downtime, reduces owning and operating costs. The special bronze bushings are specially treated and accompanied with dust seals.

Removable Polyvinyl Fuel Tank

The fuel tank is constructed of polyvinyl plastic, corrosion resistant, and guards against condensation. A large opening with a strainer allows for easy re-fueling and an external level indicator is visible to ensure safety during re-fueling. The fuel tank is easily removed with a fuel shut-off and quick release.



O-Ring Face Seal Fittings and Connectors

Specific torque settings are not required for optimal performance. The fitting and connectors have a low sensitivity to vibration and are reusable even after several disassemblies.

Side By Side Radiator and Oil Cooler

The radiator and oil cooler are accessible for cleaning from either side and are tiltable for additional inspection.

Hinged Top Engine Cover and Rear Door Panel

The top engine cover opens out of the way for excellent engine access and the hinged rear door allows for convenient daily service checks.

Multi-Viscosity Oil Can Be Used for All Fluid Requirements

The engine oil, hydraulic oil and chain case oil utilize the same grade of multi-viscosity oil.

Loader Arm Maintenance Support Strut

Allows the operator to engage or disengage the maintenance support strut without leaving the operator's seat.



ENGINE-EPA CERTIFIED

Model	Komatsu 4D88E-1FD
Type	Diesel engine, 4 cycle
Bore x stroke	.88 x 90 mm 3.47 x 3.54 in
Number of cylinders	4
Displacement	2.2 ltr. 134 in³
Combustion	Direct injection
Aspiration	Natural
Rated power:	
(SAE J1349)	34.7 kW 47 HP @ 2800 rpm
(80/1269/EC)	34.0 kW 46 HP @ 2800 rpm
Max. torque	142 Nm 105 ft. lb. @ 1800 rpm
Cooling system	Water
Air filter	Dry type with safety element
Starting system	Electric motor with pre-heating air system for cold weather 0° C (32° F)



TRANSMISSION

Type	Hydrostatic
Pumps	2 x variable displacement with 2 stage and APC system
Motors	2 x axial pistons with two speeds
Final transmission with heavy duty type roller chains immersed in oil bath connected to the four driving axles	
Speeds: - Working	10.5 km/h 6.5 mph
- Travel	16 km/h 10.0 mph
Sealed wet-disc parking brakes with automatic engagement when operator restraint bar is raised	



HYDRAULIC SYSTEM

Type	Komatsu CLSS (Closed Load Sensing System)
Pump	Gear
Max. flow - auxiliary hydraulic	62.0 ltr./min 16.1 gal/min
Max. pressure - auxiliary hydraulic	210 bar 3,045 psi
Control valve	3 elements fully Servo-controlled
High flow auxiliary hydraulic system "SUPER FLOW" (OPTIONAL):	
Max. flow	100 ltr./min 26 gal/min
Max. pressure	210 bar 3,045 psi
Control valve	4 elements



LOADER

Performance without rear counterweights	
Operating load (ISO 5998)	796 kg 1,750 lb.
Tipping load (ISO 8313)	1588 kg 3,500 lb.
Bucket breakout force (ISO 8313) with short lip bucket	1905 kg 4,200 lb.
Bucket breakout force (ISO 8313) with long lip bucket	1601 kg 3,530 lb.
Max. hydraulic lift capacity (ISO 8313)	2180 kg 4,796 lb.



STANDARD EQUIPMENT

- Accelerator pedal
- Adjustable seat with 76 mm 3" seat belt
- Wet-disc parking brakes
- Automatic Power Control system (anti-stall)
- Backup alarm
- Auxiliary hydraulics
- Cup holder
- Central Monitor Panel including hour meter, fuel level indicator, engine coolant temperature gauge. Warning lights: alternator, engine oil pressure, air filter restriction, hydraulic oil filter restriction, working lights, parking brakes, travel speed, float function and engine preheat



OPTIONAL EQUIPMENT

- Engine air intake pre-cleaner
- Rear counterweights
- Cold weather starting package
- Control pattern change valve
- Lifting hooks on cab roof
- Working lights (2 rear)
- Amber rotating beacon
- SUPERFLOW auxiliary hydraulics version, with additional auxiliary hydraulic circuit for attachments
- Suspension seat
- Halogen working lights (2 front)
- Horn
- Top window
- Rear window
- Loader arm float function
- Two-speed transmission
- Auxiliary hydraulics over-ride control
- Spark arresting muffler
- Fenders
- Bucket cylinder guards
- Ride control
- ROPS-FOPS (Level I) open canopy
- Operator restraint bar with sensor for parking brakes & hydraulic system lock-out
- Universal front attachment coupler
- Bucket self-leveling (up only)
- 12 volt electrical outlet
- Master electrical disconnect switch
- Cab enclosure with heater and defroster



CONTROLS

Proportional Pressure Control (PPC) joystick levers. The left hand joystick controls the travel, the right joystick controls the loader equipment. The PPC foot pedal controls the auxiliary hydraulic circuit for attachments. A safety system neutralizes all operations when the operator restraint bar is raised or the operator is not seated. Control pattern change valve is optional equipment. The optional control pattern splits the travel and the loader controls between both joystick levers.



ELECTRIC SYSTEM

Rated voltage	12 V
Battery	.80 Ah
Alternator	.40 A



NOISE LEVEL

(Dynamic test)
Sound power level test 104 LwA dB(A)
Sound pressure level .86 LpA dB(A)
The values inside and outside the cab are given according to the directive EC89/514 and EC95/27.



SERVICE REFILL CAPACITIES

Hydraulic system	38.0 ltr. 10.0 US gal.
Fuel tank	53.0 ltr. 14.0 US gal.
Chain cases	31.0 ltr. 8.0 US gal.
Engine oil	8.0 ltr. 2.0 US gal.
Engine coolant	8.0 ltr. 2.0 US gal.



TIRES

Optional	10-16.5 8PR heavy duty flotation tires
	10-16.5 (Airboss) segmented solid tires
	31x15.5-15 8PR super wide flotation tires

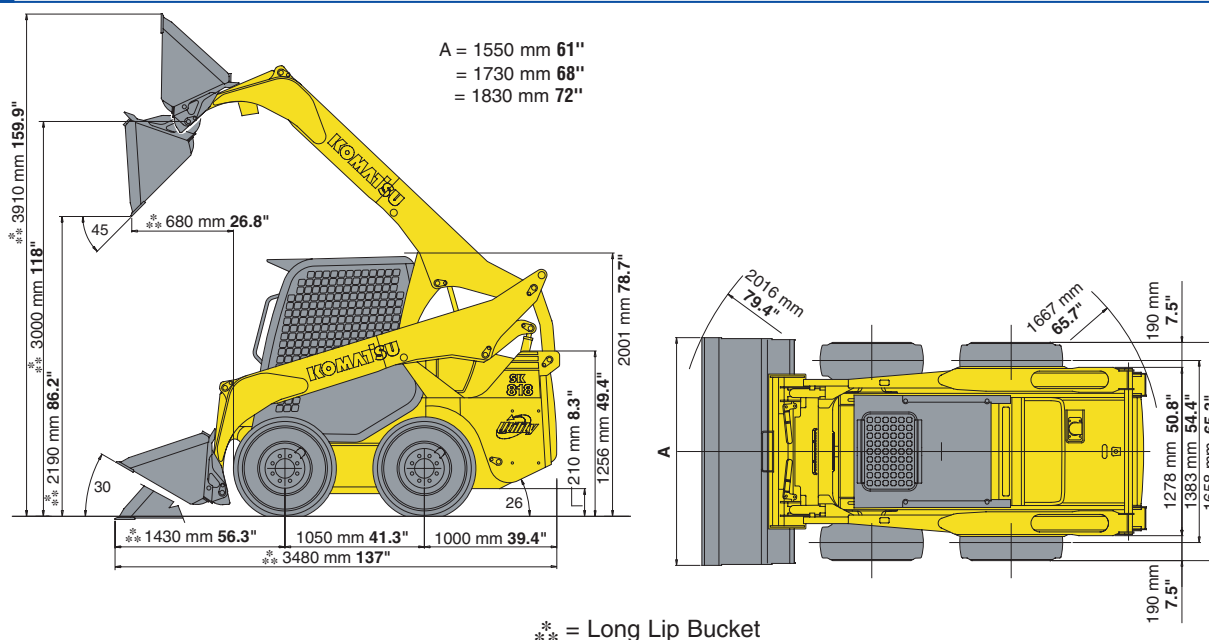


OPERATING WEIGHT

Operating weight of machine with standard bucket, full tank of fuel and an 80 kg **176 lb** operator (ISO 6016) 2935 kg **6,470 lb.**



DIMENSIONS



Bucket		Base Machine with 1730 mm 68" Long Lip Bucket		Base Machine with 120 kg 265 lb. Counterweights & 1730 mm 68" Long Lip Bucket		Base Machine with 120 kg 265 lb. Counterweights & 1219 mm 48" Pallet Forks	
Bucket capacity	SAE rated	0.42 m ³	0.56 yd³	0.42 m ³	0.56 yd³	N/A	N/A
Bucket width		1730 mm	68"	1730 mm	68"	N/A	N/A
Bucket weight (1219 mm 48" Pallet fork weight)		195 kg	430 lb	195 kg	430 lb	172 kg	378 lb
Static tipping load		1591 kg	3,500 lb	1773 kg	3,900 lb	1202 kg	2,645 lb
Operating capacity - 50% of tipping load		795 kg	1750 lb	886 kg	1,950 lb	600 kg	1,320 lb
Dump clearance, maximum height and 45° dump angle		2190 mm	86.2"	2190 mm	86.2"	N/A	N/A
Height to bucket hinge pin		3000 mm	118"	3000 mm	118"	3000 mm	118"
Reach at maximum height and 45° dump angle		680 mm	26.8"	680 mm	26.8"	N/A	N/A
Operating height	Fully raised	3910 mm	153.9"	3910 mm	153.9"	N/A	N/A
Clearance circle-front		2135 mm	84"	2135 mm	84"	2135 mm	84"
Clearance circle-rear		1665 mm	65.5"	1665 mm	65.5"	1665 mm	65.5"
Operating weight		2935 mm	6,470 lb	3061 mm	6,735 lb	3039 kg	6,685 lb

• All dimensions, weights, and performance values based on SAE J732c and J742b standards. Static tipping load and operating weight shown include 10.00 x 16.5 8PR tires, lubricant, coolant, full fuel tank, ROPS canopy, and operator. Machine stability and operating weight are affected by counterweight, tire size, and other attachments.

N/A - Not applicable

This specification sheet may contain attachments and optional equipment that are not available in your area. Please contact your local Komatsu Utility Division distributor for those items you may require. Materials and specifications are subject to change without notice.

KUSS152-01

©2003 Komatsu Printed in USA

DK10(5M)SFI

10/03 (EV-1)

KOMATSU®

440 N. Fairway Drive
P.O. Box 8112
Vernon Hills, IL 60061

