

S700 SERIES

THE AUTOMATED COMBINE



JOHN DEERE

NOTHING RUNS LIKE A DEERE

THE AUTOMATED COMBINE

SET YOUR GRAIN QUALITY.
ENGAGE THE AUTOMATION MODES. HARVEST.





CONTENTS

Development	4
Integrated Combine Adjust 2 (ICA2)	6
Active Yield	8
Control Centre	10
Harvest Support	12
Overview	18
Headers	20
Feederhouse	22
The Single Rotor	24
Cleaning Shoe	28
Active Tailings Management	30
Active Terrain Adjustment	31
Hillmaster	32
Grain Tank	34
Machine Sync	36
Residue Management	38
Tracks	42
Transmission	46
Engine	48
Cab	50
The Automated Combine	56
Telematics	58
Servicing and Maintenance	62
Specification	64
Connectivity Packages	67

REVOLUTION. NOT EVOLUTION

Since 1999 John Deere has produced more than 120,000 single rotor combines, and over 55,000 S-Series models in the last 7 years alone. Throughout this time we have constantly refined the rotor concept and the S700 is the result of more than 8 years of field testing. Working closely with customers in the field our engineers have responded to their ideas and suggestions. They've introduced significant improvements in machine performance and operator productivity, grain quality and lower running costs. At the same time our research and development teams have developed new monitoring and communication tools. These have made optimising and managing harvest operations easier.

**TOGETHER, THESE INNOVATIONS ALL ADD UP TO
A REVOLUTION IN HARVESTING PERFORMANCE**

2012

VARIABLE-STREAM ROTOR

Designed for harvesting grain in tough conditions the operator can adjust the intensity of the threshing for better grain separation or higher quality straw.

PREMIUM CAB

More space, improved visibility and 2630 touch screen colour display. This cab sets standards in the industry.

RESIDUE MANAGEMENT

100 knife chopper for fine chop and active Advanced PowerCast spreader for even distribution over the whole cutting width. A big plus of the S-Series still today.

2013

8 WING FAST

The Feed Accelerator and Stone Trap (FAST) improves feeding of high crop volumes to the rotor and lowers power consumption.

2014

ICA

Interactive Combine Adjust helps operators optimise the combine's performance, minimising losses and increasing straw and grain quality.

2015

ACTIVE CONCAVE ISOLATION

Maintains a consistent concave clearance for smoother crop flow at higher throughputs and enables more crop on crop threshing.

CONNECTED COMBINE

AutoTrac, Remote Display Access and Interactive Combine Adjustment increases the utilisation of the installed combine capacity by on average 20%.





2016

40 KM/H TRANSPORT

Time spent travelling between fields is cut with the automatic ProDrive transmission. Not to mention up to 20% fuel savings thanks to automatic rpm reduction.

2017

DYNAFLO PLUS

With up to 5.9 m² of cleaning area it's one of the largest cleaning shoes on the market.

ACTIVE TERRAIN ADJUSTMENT

Automatic adjustment of fan speed, chaffer and sieves on rolling fields, reducing grain loss and improving grain tank cleanliness.

HYDRAULIC FORE AFT TILT

By optimising the cutting height in down crops, the harvesting speed can be increased by up to 20%.

2018

ICA2

Integrated Combine Adjust (ICA2) automatically controls both the threshing and cleaning systems for consistent output whatever the conditions.

ACTIVE YIELD

Eliminates the need for time-consuming manual calibrations and double-weighing of trailers, as well as transforming the accuracy of yield mapping.

THE AUTOMATED COMBINE

CONSISTENT GRAIN QUALITY AND LOW LOSSES IN ALL CONDITIONS

Our revolutionary Integrated Combine Adjust (ICA2) automatically guarantees consistent output of the harvesting process whatever the conditions. Eliminating the need for regular manual adjustments it gives operators the confidence their combine is operating as efficiently as possible.

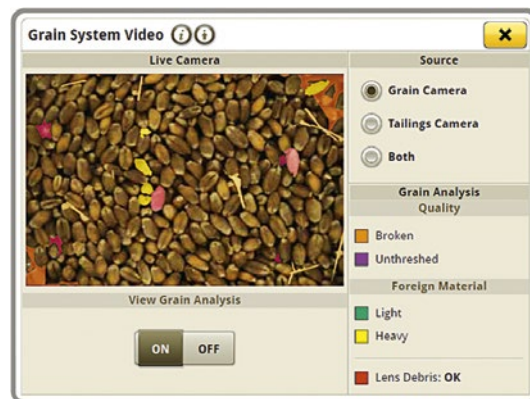
Independent tests* have shown that the utilization of the installed combine capacity by the operator can vary by up to 20%. ICA2 takes away that uncertainty giving you the optimum performance. Hour after hour. Day after day.

Once the machine is set-up ICA2 takes care of all the adjustments for the rest of the day. So all the operator has to do is drive the combine. No operator input is required, taking away additional stress and ensuring optimum harvesting all day long.

What's more, ICA2 includes a lot of functionality as standard that you have to pay extra for on other combines.

Digital cameras located in the clean grain and tailings elevators continuously measure the amount of broken kernels and dirt, making real-time automatic adjustments to maintain the pre-set levels.

Viewing a picture of a crop sample in the bypass of the tailings or clean grain elevator gives a much clearer impression of what is going on inside the machine.



WHATEVER THE CONDITIONS – NO MANUAL ADJUSTMENTS NEEDED



SUN



RAIN



OVERCAST



**WEED
INFESTATION**



UNDERSTAND YOUR COMBINE PERFORMANCE

Always have access to your Operations Centre data from your smart phone with the MyOperations app. Retrieve yield data from the current season as well as previous seasons to compare performance. You can also use Connected Harvest to remotely view, compare and even adjust the settings of several S700 combines in the field, ensuring operators are fully optimising their machines.



SAVES TIME

You optimise the combine once using ICA and the grain cameras and forget about further adjustments. ICA2 automatically compensates for changing conditions like wet straw and weed infestation, even if you can't see them.

GUARANTEED QUALITY AND LOSS LEVEL

You can set your broken kernel and dirt limits so you know what's in the tank before it gets to the elevator. That means no penalties for grain that doesn't meet your buyer's standard. The combine maintains a pre-set loss level too, so you stop losing money out of the back of the combine.

OPERATOR INDEPENDENT

It doesn't matter who is driving, you'll get the same high quality result. So you can swap operators at the end of shifts with total confidence.

What differentiates ICA2 from other systems on the market is that once you set your desired output for losses and grain quality, ICA2 consistently maintains that level. There's no need for the operator to re-adjust or interfere.

NEVER TIRES

Even the best operators get tired during the long harvest season. That's when it's easy to skip that calibration or miscalculate the amount of broken kernels. Not with ICA2.



LAIID CROP



WATERLOGGED SOIL



LOWER CROP HEIGHT



HEAVY DEW



DATA YOU CAN TRUST

Active Yield management is another automated John Deere innovation that saves time and improves harvesting performance. Now you no longer have to carry out time-consuming manual calibrations and double-weighing of trailers to get accurate yield measurement results.

Three sensors inside the tank automatically measure the change in weight as the grain tank fills. The system compares the measurement with those of the yield and moisture sensors to calibrate the yield sensor on a permanent basis. The biggest advantage of the system is that it generates a calibration curve at various speeds and throughput levels with a number of calibration points. This is a task that is usually not carried out manually in the field by operators.

What's more, the system is designed to compensate for shifting grain when harvesting on slopes or if the operator performs a sudden stop. It even compensates for wear and tear of the elevator chain over several harvest seasons. It's attention to detail like this that gives you the confidence to rely on the results year after year.



Three sensors measure the weight of grain.

BETTER YIELD MAPPING

Active Yield transforms the accuracy of yield mapping as today 96% of customers only complete a single point or perform no calibration at all – only 4% complete the recommended multi-point calibration. This improves the accuracy of precision farming as it allows better control of inputs for variable rate seeding, fertiliser application and crop care.

SAVES TIME

Now there's no need to interrupt the harvesting chain for regular weighing in different crops and conditions. Plus you don't have to worry if there's no weigh bridge within close proximity.

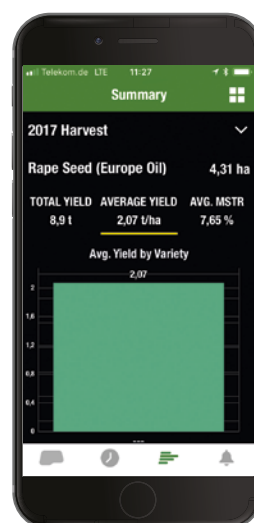


**HIGHLY ACCURATE
YIELD MEASUREMENT**

**AGRITECHNICA 2015
SILVER MEDAL FOR
ACTIVE YIELD**

BETTER BUSINESS MANAGEMENT

With accurate yield data farmers will know the exact tonnage of their harvest. This gives them the confidence to take advantage of changes in market prices and sell at the best possible opportunity.



MAKE IT YOUR OWN

PROGRAMMABLE CONTROL CENTRE

You'll find the S700 easier to operate the way you want it to. All the controls are integrated in one place. You won't find yourself looking around the cab for different displays or reaching for out of the way switches. Everything is logically grouped in one place. The Generation 4 display has been completely redesigned with the same, easy to use navigational features as a smartphone. Swipe to move from screen to screen. Select apps you want to run and customise screen layouts to suit the way you want to work. We've also rethought the navigation process, reducing the number of clicks to get you to where you need to be.

The ergonomic design of the new CommandPRO hydrohandle brings the same seamless experience as multi-function games controllers. Now you can control all the main functions from your hand. What's more, you can personalise it like never before with 7 programmable buttons. And, best of all, you can switch between screens on the display by turning a wheel on the hydrohandle – no need to take your hand off in critical situations when you have to have manual control e.g. in down crop or while cutting the headland.

***SWIPE ONE SCREEN
TO ANOTHER LIKE
A SMARTPHONE***



***CUSTOMISE AND STORE
SCREENS TO SUIT THE WAY
YOU WORK***



***7 PROGRAMMABLE BUTTONS
- MORE THAN ANY OTHER
COMBINE***



HARVEST PROMISE

**EXPERT CHECKED
COMBINES UP TO 7 YEARS
OLD ARE COVERED**

BACK-UP WHEN YOU NEED IT. GUARANTEED

Hour after hour. Day after day. You cannot afford to stop during the harvest. That's why we've created Harvest Promise – one of the most comprehensive support packages in farming. We promise to get any parts you need within 24 hours of placing your order. If we fail and your combine can't harvest, we'll provide you with a back-up machine to keep you moving. It's that simple.

There is no small print or complicated exclusions either. We are there for you.



EXPERT CHECK

The Expert Check is your way to get your combine ready for the next harvest season. Our specially trained and certified Inspection Experts know which components require special attention – thanks to John Deere's sophisticated tools based on expertise from thousands of harvests.



24 HOUR PARTS PROMISE

We've invested in the best parts logistics in the agricultural business. And with more machines in the field than any other we hold more parts stock than anyone else. It all means we consistently deliver more than 97% of all orders within 24 hours. So whatever the challenge, you can rely on us to keep you moving.



BACK-UP MACHINE

We will provide a back-up machine if parts are delivered too late. There is no complicated paperwork required. We'll take care of everything. What makes a difference is that we are not just paying a contractor. We physically have combines in the right amount and the right size on reserve at the dealership to deliver on our promise if needed.*

* Available at participating dealers only. A back-up machine is available for any John Deere combine harvester up to 7 years old. To qualify it must be maintained in accordance with the operator's manual and undergo a post-season Expert Check with any recommended repairs carried out.

100% ORIGINAL JOHN DEERE PARTS

Your John Deere combine will be repaired by your certified John Deere combine dealer using genuine John Deere parts, ensuring optimum performance.



TRAINING

Certified dealers deliver professional operator training carried out by factory trained experts. This training is available every year to refresh operator's skills and to train new operators.



EXPERTS IN PLACE

Certified dealers have full-time harvesting experts in both sales and service. Factory trained experts will help you set up and optimise your combine before the season starts. They will also be on hand throughout the harvesting season to give you help and advice to ensure your machine is operating at peak performance.

24 HOURS PARTS DELIVERY. OUR PROMISE

Our parts network is one of the biggest in the agricultural business. And with more machines in the field than any other manufacturer, including more than 120,000 STS and S-Series combines, we hold more parts stock than anyone else. It all means we consistently deliver more than 97% of all orders within 24 hours. So whatever the challenge, you can rely on us to keep you moving.



YOUR DEALER

Every dealer stocks sufficient parts to fulfil 8 out of 10 orders immediately. Opening hours are also longer during the harvest season for that late night urgent order. You can also check their stock and order directly on JDParts.com 24/7.



DEALER NETWORK

If your dealer does not have the part, using our Parts Locator they can check the stock of 1,900 other dealers throughout Europe.



PARTS WAREHOUSES

If the part is not in dealer stock we have regional parts warehouses in Sweden, the UK and our main European Parts Distribution Centre (EPDC) in Germany. Open 24/7, the EPDC is the size of 8 football pitches, stocking more than 275,000 parts, from a knife bolt to a 10.7 m combine auger. Order to shipping takes less than 2 hours thanks to our advanced logistics and packaging systems.



OUR FACTORIES

If needed we grab spare parts directly from the assembly line in our factories, even at the weekend.



USED COMBINES: PREMIUM INSPECTED*

All Premium Inspected combines have undergone an Expert Check and any repairs are made only with original John Deere quality parts for added peace of mind.

John Deere combines up to 5 years old/1,500 working hours also come with a comprehensive warranty: up to 12 months/1,000 hours GreenShield Power: Basic Package GreenShield Plus: Basic package plus hydraulics and electrics for John Deere Premium Inspected Machines.

* Available at participating dealerships.





PERFORMANCE WHERE IT COUNTS. EVERYWHERE

Automated harvesting, multi-crop capability, easy conversion between crops, customisable control... the list goes on. The S700 Series brings together everything our customers asked us to. Now you have a high performance harvesting machine from header to spreader. Tested worldwide. Built in Germany. Backed-up by the most comprehensive support package in the industry. Go harvest!

PROGRAMMABLE CONTROL CENTRE

Customise your harvesting experience like never before. The new CommandPRO hydrohandle features 7 programmable buttons and the new Generation 4 CommandCenter with its 10 in colour display and 4600 processor has the same easy to use navigation as your smartphone.

ICA2 – INTEGRATED COMBINE ADJUST

A revolution in harvesting automation, ICA2 guarantees consistent grain quality and loss levels whatever the conditions.

HILLMASTER: LEVEL PERFORMANCE ON SLOPES

Harvest on extreme slopes with no loss in performance. The Hillmaster system levels the entire combine body, compensating for slopes up to 22%.

ALL NEW JOHN DEERE TRACKS

Unique to John Deere the revolutionary new design delivers 20% more comfort, 30% bigger footprint and 50% better durability.



HIGHLY ACCURATE YIELD MEASUREMENT

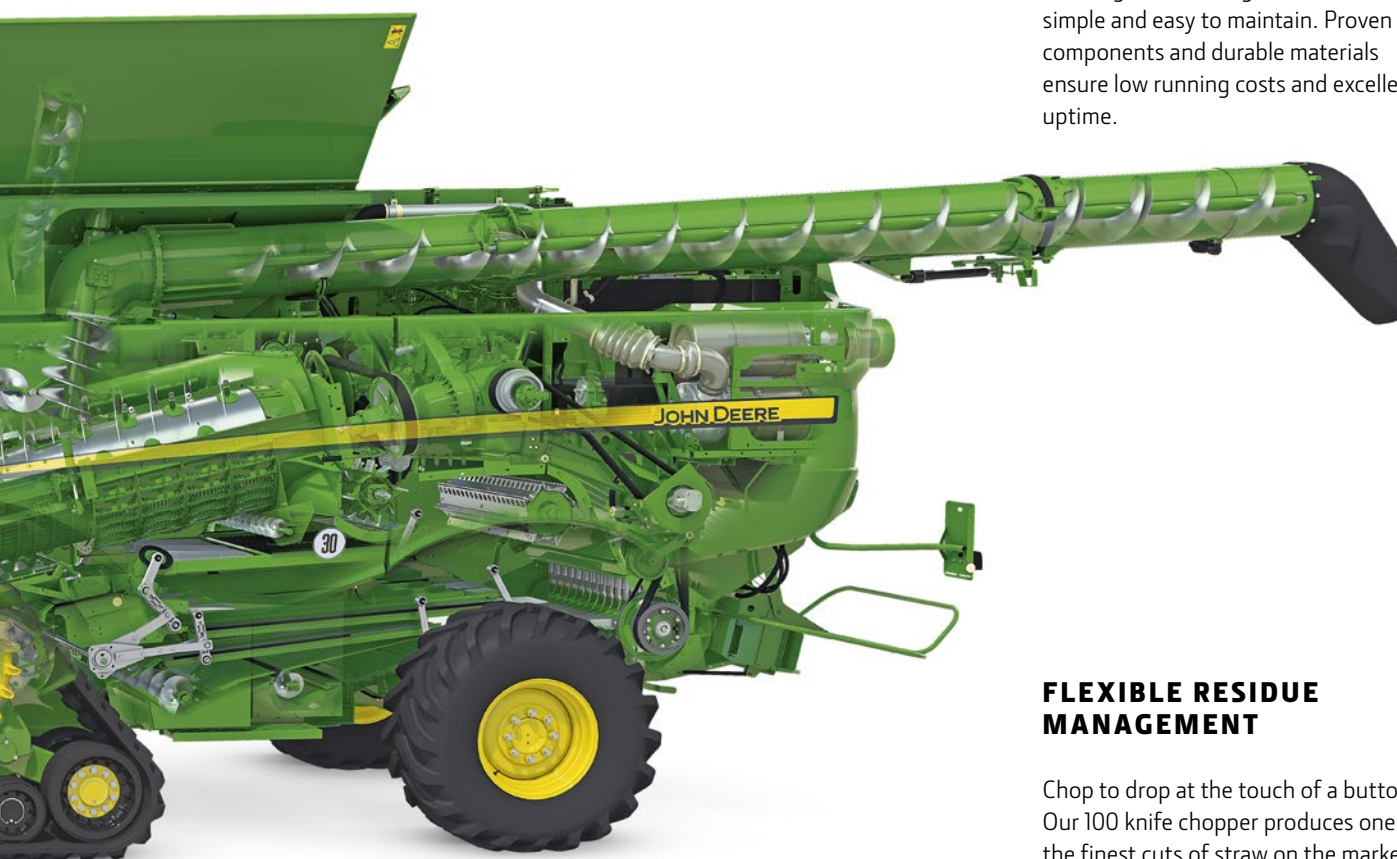
Say goodbye to time-consuming manual calibrations and transform your precision farming with more reliable yield mapping data.

ACTIVE TAILINGS SYSTEM

Threshing the tailings separately increases the capacity of the combine delivering better grain quality and lower losses, as well as improved straw quality and lower fuel consumption.

LOW COST OF OPERATION

The single rotor design is mechanically simple and easy to maintain. Proven components and durable materials ensure low running costs and excellent uptime.



THE SINGLE ROTOR ADVANTAGE

Better straw and grain quality than hybrid systems, single rotor technology offers true multi-crop capability.

DYNAFLO PLUS CLEANING SHOE

Almost 6 m² of cleaning area makes this shoe one of the largest on the market. Crop stays on the sieves for longer maximising cleaning time and minimising losses.

FLEXIBLE RESIDUE MANAGEMENT

Chop to drop at the touch of a button. Our 100 knife chopper produces one of the finest cuts of straw on the market and our Advanced PowerCast (APC) spreader distributes it evenly over the whole cutting width.

HIGH PERFORMANCE HEADERS

WHERE PROFITABILITY BEGINS

Small improvements in grain yields bring big increases in profits. That's why John Deere offers a comprehensive range of headers so you can find the perfect match for your crops and your combine. Choose from traditional auger designs (600R, 600F, 600X) to active crop feeding with belts (700PF, 700D or 700FD) in a wide range of widths up to 14.5 m. For further information on these headers and the rest of our range see our separate header brochure.



600R AND 600F

More than 650,000 600R headers have been built, making it a proven and field-tested combine header. It has many premium features including stainless steel feed plates, a large diameter auger and a linear knife drive. The 600F features a flexible cutterbar which lets you drive faster and cut cleaner on uneven ground and helps reduce losses in down or tangled crops. A 600R or 600F with rapeseed attachment has low losses due to the long distance from the knives to the auger.



600X

The ultimate header if you're harvesting a variety of crops. The 600X has an unbeatable conversion time of under 3 minutes without the need for any tools. It has one of the longest tables on the market (1,200 mm) for a variable header, so grain losses are minimal. You can also adjust it by up to 800 mm from the comfort of the cab to respond to changing conditions on-the-go.

CORN HEADERS

Our corn headers are made in Germany by Geringhoff. Available in a wide range of widths and row spacings to match your combine's capacity they can run at high ground speeds even in down crop. Designed for minimal maintenance, the secret to their legendary durability is the precision engineered aluminium main drives, row unit gearboxes and the Centaflex couplings which eliminates stress on the bearings and drive mechanism of each row unit.



700PF

The 700PF features an active transport, head-first crop flow process which results in a very constant material flow so the combine can run at close to its maximum capacity. This makes it ideal for short stalked grains or laid and long-growing crops as the feed auger only captures cut material. Conversion to rapeseed can also be done in less than 3 minutes. The new 700PF headers with their huge 760 mm augers are the perfect match for the S-Series in special conditions like down crop, tall rapeseed or short spring barley.

700D & 700FD

The 700D header promotes head first feeding for smooth crop flow. Its lightweight design reduces ground pressure and the hydraulic tilt angle adjustment adapts quickly to down crop. The 38 mm minimum cutting height leaves fields clean and the knives and fingers are specially hardened for working closely to the ground. Fully integrated into the combine display it's also rapeseed capable thanks to the 1,650 Nm side clutch and 450 mm top auger. Mechanical side knives and a sealing kit option are all it needs to be rapeseed ready.

The 700FD offers all the features of the 700D with the added benefit of a flexible knife with up to 190 mm travel range. Instead of using hinged wings, it flexes over the whole width of the cutterbar to minimise crop losses on uneven ground.



HIGH & LOW

HIGH CAPACITY FEEDING. LOW POWER CONSUMPTION

The high capacity feederhouse is the foundation for perfect results. Heavy duty chains and large cast iron feeder slats are designed to handle the toughest of conditions such as green straw, rapeseed or rice harvesting. Its massive throughput also means you won't be limited by the biggest small grain and corn headers when you're working in high yield crops. Headers up to 13.7 m (9.15 m for HillMaster) and corn headers up to 18 rows are no problem at all.

Even under these high capacity conditions the new wear plates are so durable we're confident that they will never need to be changed during the lifetime of your combine. The design is simpler too, with no need for dust extraction equipment either.



VARIABLE SPEED FOR LARGE CORN HEADS

Match crop conditions, intake and ground speed via a button on the multifunction control handle with our exclusive 5-speed PowerShift transmission. High yields are not a problem either, it can permanently and reliably transmit up to 202 kW to chopping corn heads up to 18 rows wide. The 110 kW drive with either fixed or variable speed is standard on all models.

POWERFUL REVERSER

If you ever get a blockage our powerful mechanical reverser will clear it in seconds. Electrically actuated it has the same 136 PS available in reverse as it has in forward mode.

FAST HOOK-UP

Just one pull and the multi coupler connects all the hydraulics and electrics as well as the header latching pins.



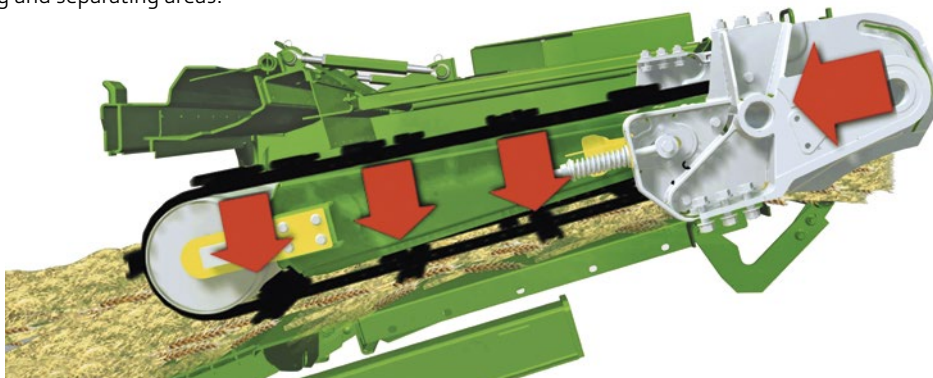


INSTANT STOPPING

The main drive transmission and clutch for the front end equipment is located on the feederhouse instead of being close to the engine. This simple and highly effective design minimises the inertia between the transmission and the header as no pulleys are required to transmit the power. It also means if you need to make an emergency stop the clutch opens immediately and the drive stops without the need for an additional braking system.

EXCLUSIVE PIVOTING MID-FLOOR

The pivoting mid-floor is exclusive to the S-Series and provides greater feeding capacity, especially in high volume crops. The entire internal feederhouse components are free to move up or down instead of just the front feed drum. This ensures better engagement of the crop and smoother transport to the threshing and separating areas.



UP TO 20% FASTER HARVESTING IN DOWN CROPS

The Hydraulic Fore Aft Tilt (HFAT) feederhouse allows the operator to adjust the feederhouse angle seamlessly by up to 17 degrees on-the-go. Control is fully integrated in the CommandArm and the operator can store pre-set positions on the header height resume buttons to change the cutting height and angle. For instance, between standing and laid crop. It all adds up to a 20% faster harvesting speed in challenging conditions. The optional HFAT can be combined with most feederhouse types, while the mechanical feederhouse is included as standard on all models.

INCREASED THROUGHPUT

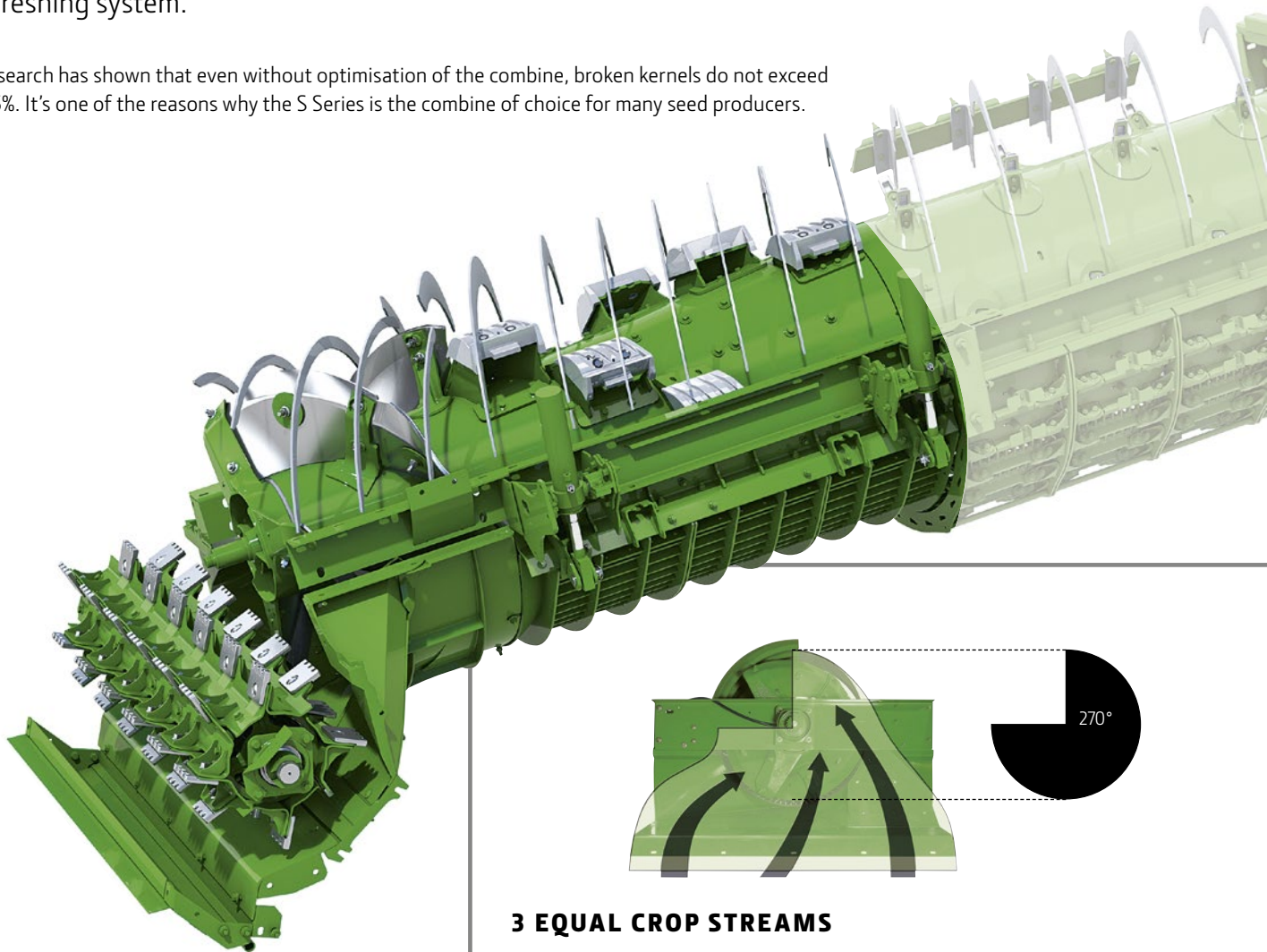
The wide cross-section and low profile roller increases throughput and the 4 chain feeder system easily handles dense, high yielding crops.

THE SINGLE ROTOR ADVANTAGE

LESS THAN 0.5% BROKEN GRAIN

The single rotor of the S-Series gives you a clear advantage over other, more traditional and hybrid systems. Instead of splitting the crop flow up into two streams it keeps a single crop flow which consumes less power. This is because the large diameter of the rotor generates higher inertia than smaller rotors running at lower rotational speeds. The crop also passes over the threshing areas multiple times compared to a tangential threshing system.

Research has shown that even without optimisation of the combine, broken kernels do not exceed 0.5%. It's one of the reasons why the S Series is the combine of choice for many seed producers.



3 EQUAL CROP STREAMS

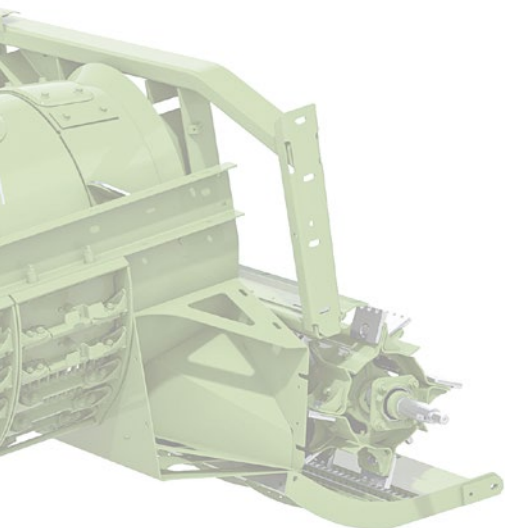
270° feeding ensures a smooth transition from a tangential crop flow from the beater, to an axial crop flow for the rotor. The large space in front of the rotor makes this transition easier and less power consuming leaving more power for threshing. Unlike hybrid systems, there is no need to split the crop flow and squeeze it through a narrow opening which can cause plugging.



Watch the crop conversion on YouTube to see how easily it is done.

ONE COMBINE. ALL CROPS

It doesn't matter if you're harvesting large areas of a single crop or moving from crop to crop, the S-Series offers true multi-crop capability. Tested in 36 different crops, you can customise every single component from the header through to the rotor and residue management system. Crop conversion is fast and easy with excellent access to the rotor. For instance, unlike many other combines, the front and rear concaves can easily be replaced to optimise harvesting efficiency for individual crops. Our extended wear package includes common wear components as well as rotor elements and is recommended for rice or other aggressive harvesting conditions.



HIGH CAPACITY FEEDING

Unlike other competitors, the 8 wing Feed Accelerator with Stone Trap (FAST) is included as standard on all models and guarantees even feeding. It will easily handle large volumes of crop and damp straw, pulling it out of the feederhouse and pushing it directly into the rotor. What's even more important is it's positioned in front of the rotor and close to the feederhouse, which does not allow for any material to settle down and interrupt the flow. This is a key differentiator to competitor systems.

EFFECTIVE STONE PROTECTION

You'll enjoy non-stop harvesting thanks to the large stone trap which is included as standard. There's no need to interrupt the harvesting process due to stones in the crop mat and no lost crop on the ground.

EVEN FEEDING

The crop is divided into 3 equal streams for balanced loading of the rotor. This maximises the capacity of the rotor. It also preserves straw quality as it prevents too much crop building up in one part of the rotor which could potentially damage the straw.

PROGRESSIVE THRESHING

The thickness of the straw mat gradually reduces as it passes over the conical threshing area. In the front part of the cone the easiest to thresh grain is removed through gentle and efficient crop-on-crop threshing. In the rear part the remaining crop is separated. The overall effect is very gentle crop-on-crop threshing for the best possible grain quality and the highest power efficiency.

ACTIVE CONCAVE ISOLATION (ACI)

This maintains consistent concave clearance for better performance in high yield crops or when there is uneven feeding. It enables the concave to be set much wider for more crop-on-crop threshing. Compared to other mechanical systems this enables a non-stop overload protection.

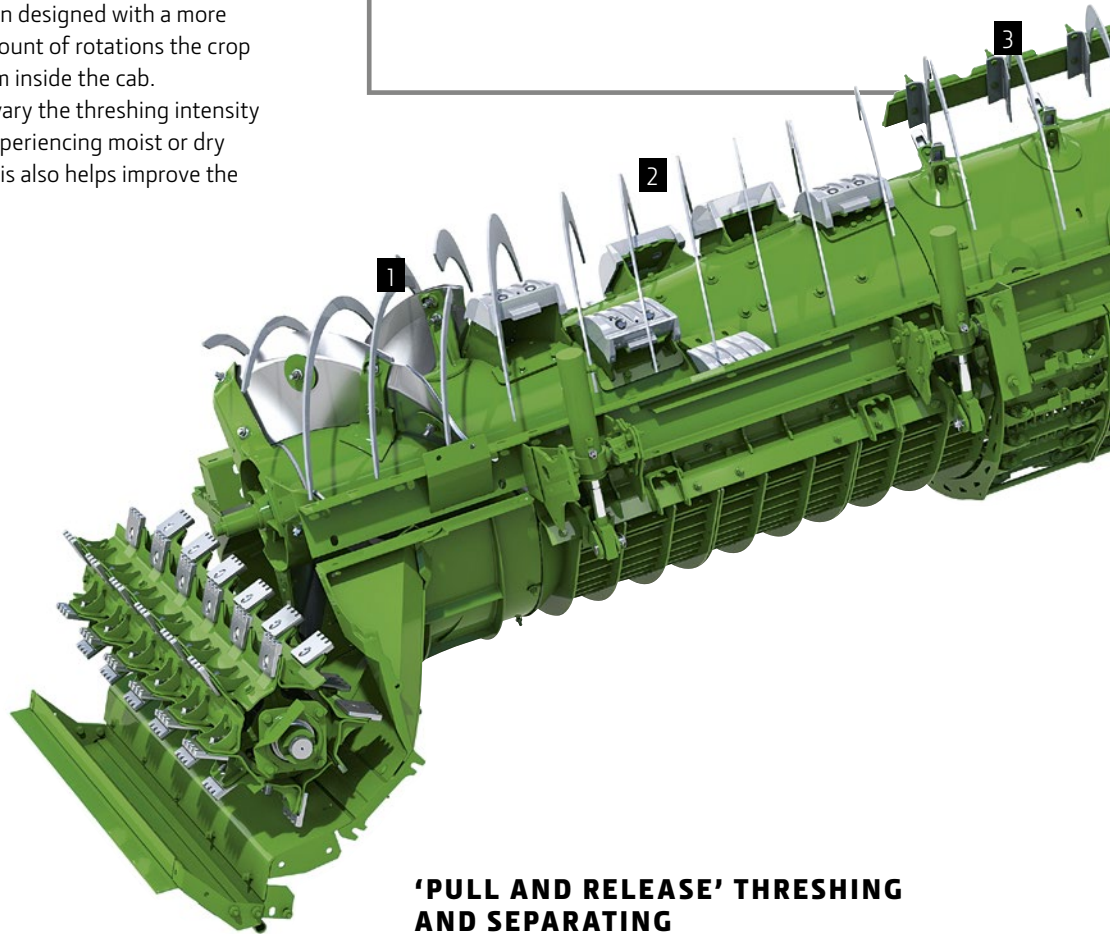
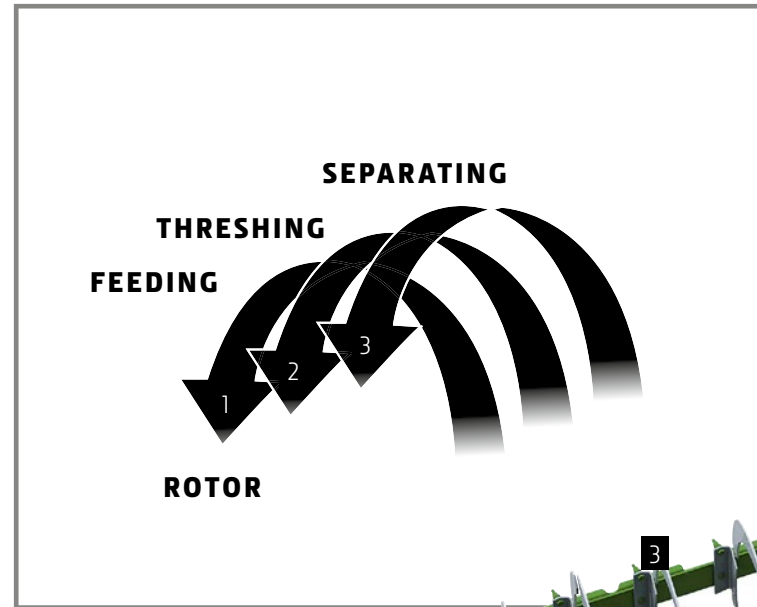
NO REASON TO FEAR PLUGGING

Operators often go slower than necessary to avoid a plug as this might mean hours of work to clear. Not with the S-Series. Even if you manage to plug it (bypassing the electronic warnings), unplugging is extremely fast. All you have to do is disconnect all drives and start them one-by-one with the concave opened to maximum and the threshing system in slow speed.

EFFICIENT SEPARATING

CHOOSING THE RIGHT ROTOR

The rear section of the rotor is predominantly where the separation takes place. Depending on the conditions there's a choice of two rotors: TriStream and VariableStream. The TriStream rotor is recommended for lower yielding crops. The Vari-Stream rotor is recommended for high yield, rice or when crops are damp, wet and green, or in tough straw. For these conditions the rotor has been designed with a more conical shape at the front. The amount of rotations the crop performs can also be changed from inside the cab. This allows the operator to easily vary the threshing intensity depending on whether they are experiencing moist or dry conditions throughout the day. This also helps improve the straw quality.



'PULL AND RELEASE' THRESHING AND SEPARATING

The off-centre rotor creates a 'pull and release' effect. The crop is compressed as it passes the grates at the bottom of the rotor and is then released as it moves towards the top. This produces a separating effect which moves the grain to the outside of the crop flow where it is separated through the grates far more efficiently.

REPLACEABLE SEPARATOR TINES

The use of separation tines instead of separation elements improves the mixing effect. This helps move the grain to the outside of the crop flow for better separation, even in tougher conditions with green straw.

HIGH INERTIA SEPARATING

The rear section of the rotor is designed for maximum separation. That's why the rotor has the biggest diameter at this point so it can generate the highest inertia. This delivers superior separation when compared to twin rotor combines which have smaller diameter rotors. Separation is further assisted by the large fingers instead of threshing elements. These loosen up the crop mat, making sure any trapped grain can escape from the straw instead of destroying the straw.

HEAVY DUTY GRATES

Heavy duty separator grates with dual row interruptor bars which loosen up the crop mat and improve separation are available. These are ideal for tough conditions such as harvesting green small grain.

LOW ENERGY DISCHARGE

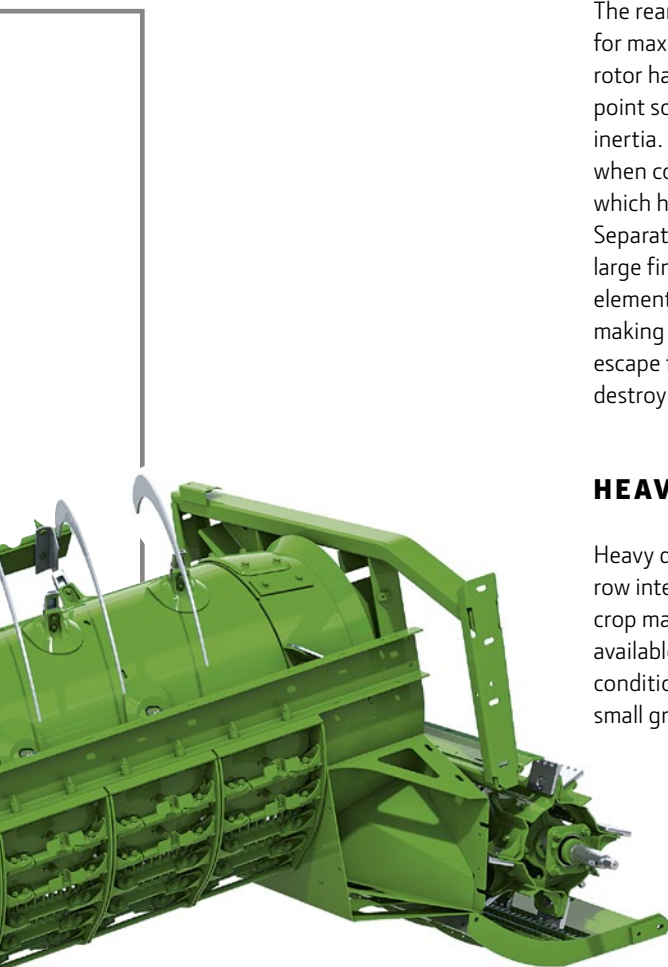
The tapered rear cone allows material to expand before it is discharged through the 8 wing discharge beater. This improves power efficiency and straw quality.

EVEN CHOPPER FEEDING

The discharge beater pulls crop out of the rotor instead of the chopper which preserves the stalks. The impellers evenly distribute the crop to avoid plugging and feed the entire width of the chopper. This ensures lower knife wear, better chopping quality and more even distribution. The choice of a drum system instead of a belt also enables plug free operation as there are no dead spots between the rotor and the chopper.

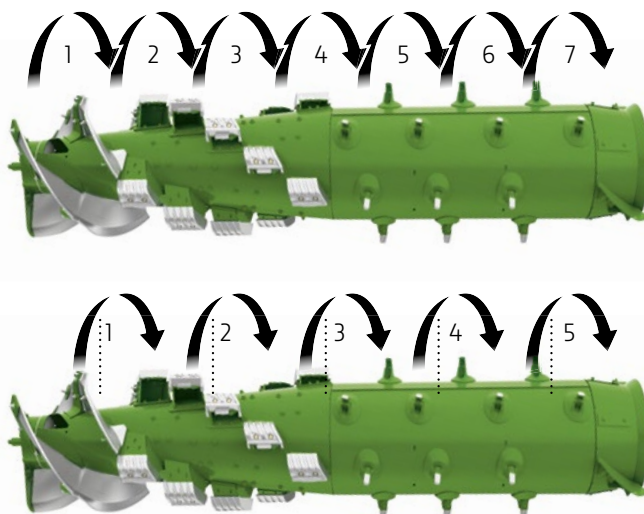
EASY ADJUSTMENT

The simple design means there are less adjustments to make so keeping the machine optimised is far easier.



VARIABLE STREAM ROTOR FLEXIBILITY

Electrically adjustable rotor vanes are included as standard on combines equipped with the variable stream rotor. The operator can choose between two different cropflow speed settings. In the standard position the crop makes 7 full rotations for higher grain separation. If the operator wants to optimise the straw quality or reduce chaff load on the straw in brittle conditions he can switch to the advanced position. This exits the straw from the combine after just 5 rotations.



DYNAFLO PLUS CLEANING SHOE

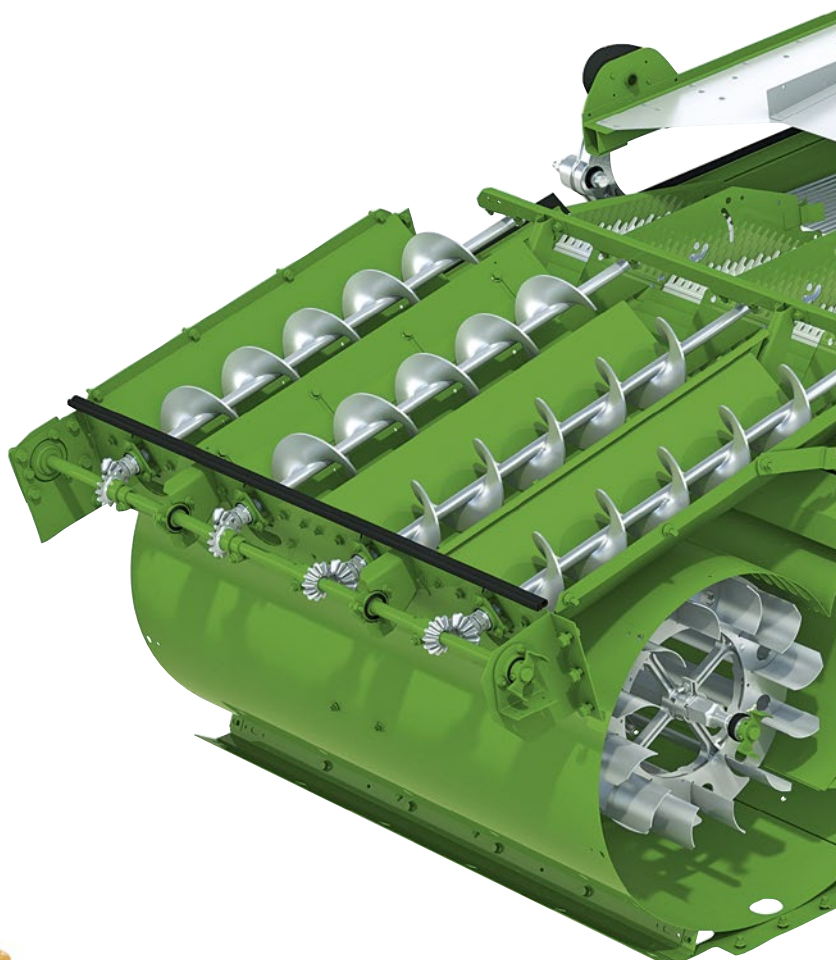
MAXIMISING CLEANING TIME,
MINIMISING LOSSES

5.9 m² of sieve area makes this one of the largest cleaning shoes on the market. Crop stays on the sieves for longer, maximizing cleaning time and minimising losses.

INNOVATIVE FAN DESIGN

The completely redesigned fan delivers up to 740 m³ of air per minute and was designed to evenly distribute the air over the entire width. Excessive suction on the side is minimised through targeted sealing of the openings, while more air is taken in through air ducts in the middle.

The large air volume paired with the new air flow and the large sieve area makes additional slope compensating features obsolete.



EASY ACCESS

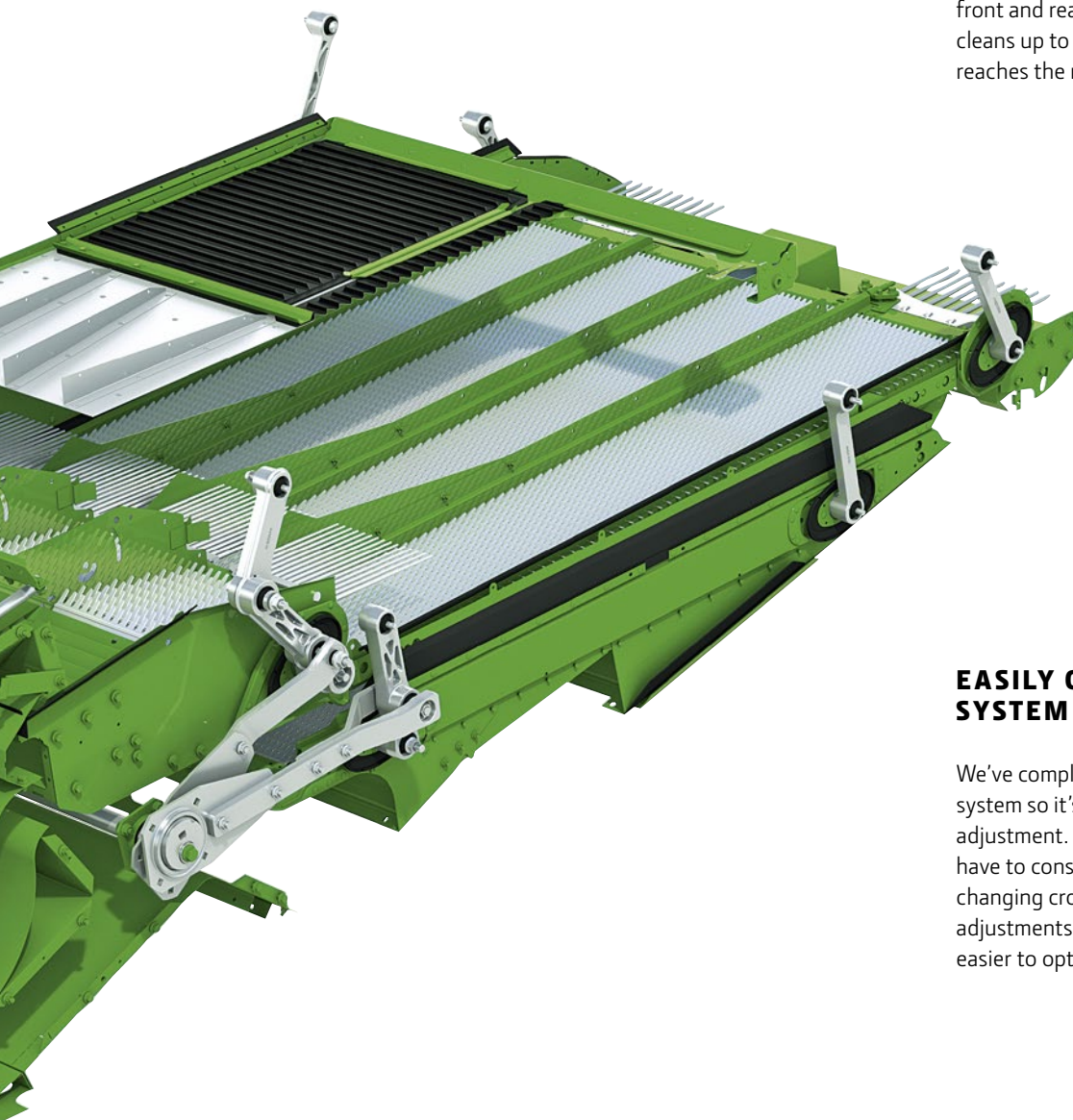
The new sieves are fitted with mounts that can be installed and removed in a matter of minutes. Access to the sieves for cleaning is now much easier too.

RETURN PAN

The S700 features a return pan as standard which is mounted under the rear section of the rotor. It catches any separated grains and moves them to the front of the cleaning shoe to ensure they are not lost out of the back of the machine.

MORE EFFECTIVE 2-STAGE PRE-CLEANING

An additional raised front chaffer is a unique feature of the DynaFlo Plus. This helps thin the crop mat and distribute it across both the front and rear of the cleaning shoe. It also cleans up to 40% of the free grain before it reaches the main chaffer.



EASILY OPTIMISED CLEANING SYSTEM

We've completely redesigned the cleaning system so it's less sensitive to operator adjustment. This means the operator doesn't have to constantly make adjustments in changing crop conditions. No pre-chaffer adjustments are required at all and it's much easier to optimise the fan.

HEAVY DUTY CONVEYOR AUGERS

The self cleaning conveyor augers ensure active crop flow on slopes and under tough harvest conditions. So even if you are harvesting on hillsides, wet and sticky conditions (e.g. rapeseed or corn) you can be sure that the cleaning shoe is evenly loaded. You'll also appreciate the auger preparation pans don't need regular cleaning.

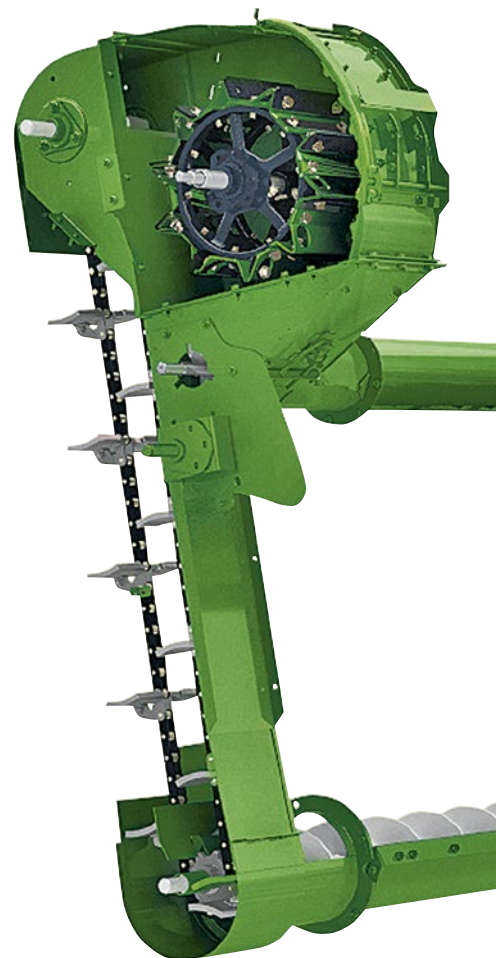
ACTIVE TAILINGS MANAGEMENT

LOWERING LOSSES

The active tailing system is a major performance enhancing feature of the S780-S790 models. It increases the capacity of the combine by taking care of tailings separately and makes the overall set-up and adjustment easier. The net result is more performance, better grain quality with lower losses as well as improved straw quality and reduced fuel consumption.



The system acts as a re-thresher which takes care of the tailings. This allows the concave to be opened wider which lowers both the power requirement and fuel consumption. At the same time it has the added benefit of improving straw quality as the crop is not so compressed between the concave and the rotor. The reduction in tailings also allows the bottom sieve to be opened further which increases capacity even more.



PROTECTING GRAIN QUALITY

The rubber paddles on the elevator minimise grain damage. The operator can view the grain quality on the ICA2 elevator camera and make adjustments accordingly – a far superior solution to manual inspection windows.

EVEN SIEVE DISTRIBUTION

The material is returned to the top of the chaffer by an auger. The opening at the bottom of the auger is triangular so material is spread evenly instead of it dropping on one spot. This helps avoid any potential overload of the cleaning system.

GENTLER THRESHING

A 'mini' threshing drum with real rasp bars and concave separates kernels still sitting in ears. Like the rest of the threshing system, this is designed to be gentle to avoid grain damage. The concave itself has two settings controlled by a spring lever for easy switching between corn and small grain crops.



ACTIVE TERRAIN ADJUST

DELIVERING CONSISTENT OUTPUT ON SLOPES

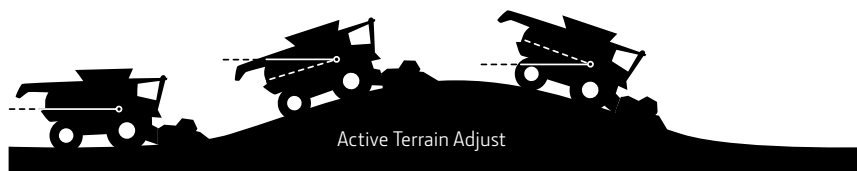
In rolling terrain it can be difficult to get the right cleaning shoe settings as you are constantly either going up or down slopes. That's where Active Terrain Adjust comes in.



ACTIVE TERRAIN ADJUST

Depending on the gradient of the slope, Active Terrain Adjust automatically adjusts all the important cleaning shoe settings: fan speed, chaffer and sieve. It also takes into account the type of crop that is being harvested. For instance, rapeseed is particularly sensitive to fan speed changes so the system adjusts the chaffer and sieve settings first, before adjusting the fan speed.

Active Terrain Adjust results in consistently low grain losses on rolling terrain. It also reduces the amount of tailings and delivers cleaner grain to the tank. Possibly what's most important of all, it takes the pressure off the operator to make constant adjustments.

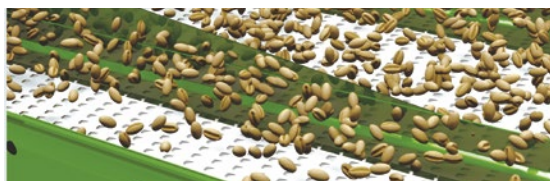


UPHILL SLOPES

Going up a hill both the chaffer and sieve are opened while the fan speed is reduced to keep grain from being lost through rear of the combine. In this situation the cleaning system performance increases by up to 50% on inclines of up to 16 degrees.

DOWNHILL SLOPES

On downhill slopes the chaffer and sieve close while the fan speed increases to keep grain from pushing towards the front of the machine. This reduces the volume of tailings by as much as 50%, resulting in a cleaner grain tank sample. It also saves you from penalties from dirty grain samples when you come to sell at the elevator.

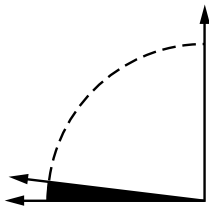


SIDE HILL PERFORMANCE PACKAGE

GENTLE SLOPES

The secret to a stable hillside performance is the new DynaFloPlus cleaning shoe. It all starts with the conveying augers which move the material evenly onto the cleaning shoe. There's no chance of it sliding down or moving to one side.

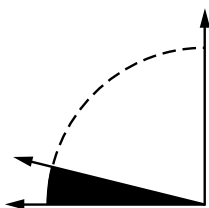
Once the material reaches the cleaning shoe, the real innovation shows. The whole shoe is longer than before and also longer than comparable concepts from other brands. This means the crop stays longer on the chaffer and sieve. The longer it stays, the more time it has to be separated and the less chance of it going out the back of the combine, which reduces losses. This technology allows slopes of up to 7% to be covered.



SLOPES UP TO 7%

Side hill performance package for slopes up to 14%

The side hill performance package contains chaffer dividers, grain agitators and grain pan diverters. These prevent grain from accumulating to one side and help distribute it over the full width of the chaffer. The agitators actively move grain uphill with every stroke while the dividers and diverters prevent grain from moving downhill on side slopes. Together with the in base technology at the cleaning shoe you can be confident of harvesting in slopes of up to 14% without any compromises or grain losses. This simple and reliable solution has no moving parts either, so it's maintenance and wear free.



SLOPES UP TO 14%



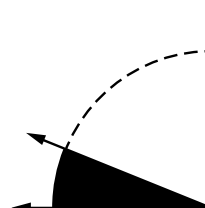
THE HILLMASTER COMBINE

STEEP SLOPES

We don't like compromises and we know the physical limits. That's why we offer Hillmaster for the S770-S790 models, simply because it is the best solution for slopes of more than 7%. The Hillmaster system not only adjusts the chaffer and the cleaning shoe, it levels the whole combine from the feederhouse to the chopper.

This means the whole crop flow behaves exactly as if the combine was harvesting on level ground. The grain tank also stays level which gives you the added benefit of being able to carry a full load even on slopes, saving additional unloading stops. HillMaster won't just be appreciated when it comes to measuring your yields either. It's a lot more comfortable for the operator too.

HillMaster also has the added benefit of keeping the weight distribution even. Without it the wheels on the downhill side of the combine would experience more load which would increase soil compaction. By levelling the whole body of the combine, HillMaster shifts the centre of gravity so there's even ground pressure across all four wheels. This also ensures that the combine has better traction and stability on slopes. An important consideration in unstable or wet soils.



SLOPES UP TO 22%



UNLOADING ON-THE-GO IN RECORD TIME

The S-Series saves you valuable time when it comes to unloading. The 14,100 L grain tank can be unloaded at a super-fast rate – up to 135 L/s*. That's just 105 seconds to unload a full tank! What's more, thanks to the 37 kW / 50 hp engine boost you can still be harvesting at full power. Now add to this our innovative Active Yield management system which measures grain yields accurately and you don't have to waste time weighing and calibrating loads throughout the day.

Together, these innovations mean fewer unloading cycles and less time unloading. There's also no need for regular weight calibration and easier in-field logistics.



ALL-ROUND VISIBILITY

Visibility is excellent too. With a large rear window, you always have a clear view into the illuminated grain tank. The extended glass area on the top left and right hand side of the cab give a superior view to the end of the unloading auger. If you need to, you can also easily take a grain sample from next to the cab.





REMOTE CAMERA VIEWING

A camera mounted on the unloading auger spout improves visibility. To make unloading even easier the picture can be relayed wirelessly to the monitor in the cab of the tractor towing the trailer.



GENTLE UNLOADING

The large diameter of the unloading auger not only adds to the overall strength, but also reduces grain damage thanks to the rpm it runs at when unloading.

EASY ACCESS TO GRAIN TANK

Wide steps and handrails give you convenient and safe access to the grain tank. The S-Series also features adjustable cross auger covers so you can quickly convert machines for different crops.



ACTIVE YIELD MONITORING

Three sensors in the grain tank constantly monitor the weight of the grain and provide calibration values for the yield sensor. Now you no longer have to carry out manual calibrations.

The yield data is displayed on the GreenStar 4600 display and can be wirelessly transferred to the Operations Center on MyJohnDeere.com. You can view it there, download it into your farm management system or directly create a prescription map for the next job to be done on the field.



WIDE RANGE OF AUGER LENGTHS

Unloading augers are available in different lengths depending on your preferred unloading configuration. You can handle even the widest headers up to 13.7 m while still maintaining sufficient clearance between the tractor and trailer for unloading on-the-go.



OPTIONAL FOLDING AUGER

The optional folding 6.9 m or 7.9 m unloading auger saves space for storage in your barn and helps avoid any potential damage when manoeuvring in tight spaces.

OPTIMISING LOGISTICS

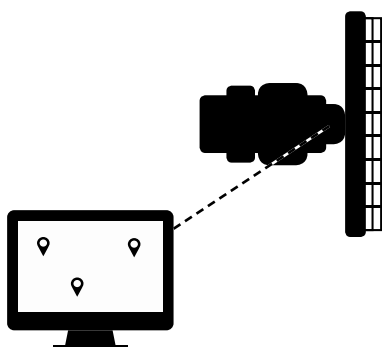
MACHINE SYNC

Machine Sync is a powerful machine-to-machine communications application that allows you to connect multiple machines and operate them together, 'in sync'. Working seamlessly with AutoTrac you'll never need to stop your harvesting operation to safely unload your grain and it will make significant improvements to the efficiency of your harvesting logistics.



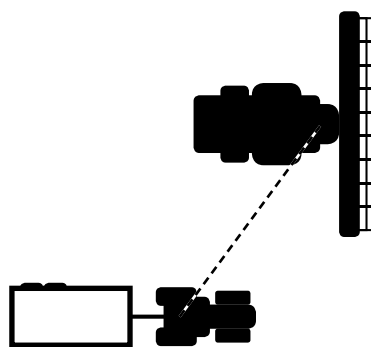
REMOTELY CHECK COMBINE GRAIN FILL LEVEL

Using Machine Sync the grain trailer operator can view the location of all the combines in their network. They can see the direction of travel and grain tank fill level. Using this data they can make a decision on which combine to unload next. Alternatively, the combine operator can request a tractor for unloading at the touch of a button. This ensures optimized routing for grain trailers, saving time, fuel and reducing soil compaction in the field.



COMBINE OPERATOR TAKES CONTROL OF UNLOADING TRACTOR

As the tractor towing the grain trailer arrives near the combine, the tractor operator activates the system. Now the combine operator takes control of the tractor's speed and steering.



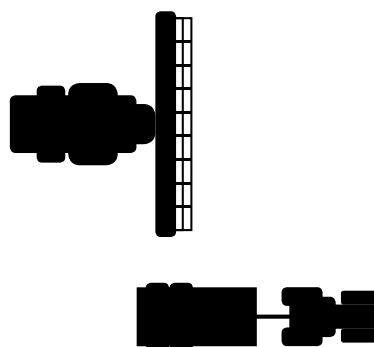
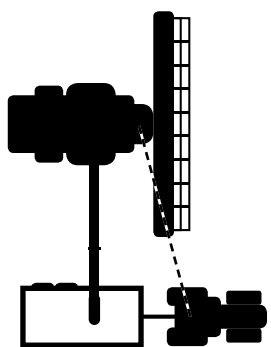


COMBINE OPERATOR STEERS TRACTOR

The combine operator can now control the relative position of the tractor to the combine, left/right or forward/backward. If the combine changes direction, the tractor changes direction – both synced in perfect harmony. This takes away any potential miscommunication with the tractor operator and allows the combine operator to focus on filling the trailer while still harvesting. It also reduces the risk of grain spillage.

COMBINE OPERATOR RELEASES CONTROL

When the trailer is fully loaded the tractor operator can take over control again just by turning the steering wheel, alternatively the combine operator can also stop the synchronisation on the display.



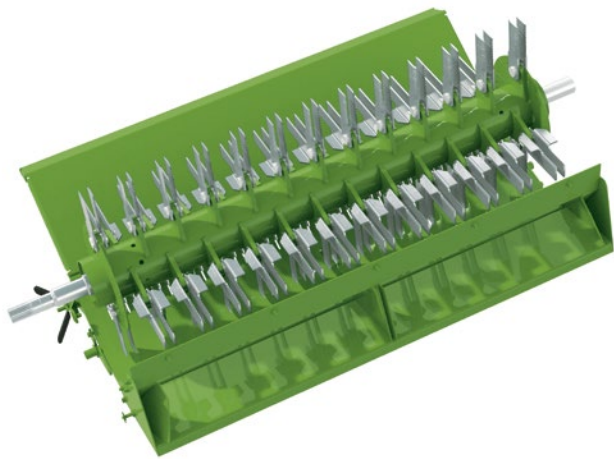
RESIDUE MANAGEMENT SYSTEMS

MORE FLEXIBILITY

There's a choice of up to 3 different chopper systems to suit your harvesting operation. Whatever you choose, you can rely on evenly spread fine cut straw from the moment you start harvesting, or well windrowed straw for quality bales.

All systems feature a discharge swap switch to change the offset for the direction of spread to compensate for wind direction. You can also adjust the width of spread from the cab as well. Our Premium and Intermediate systems are equipped with a 100 knife, extra fine cut chopper. This ensures the residue is quickly incorporated into the soil, releasing valuable nutrients for the next planting season.

The Premium system is also a real time-saver. You can switch from chop to drop from the cab at the touch of a button. It proves a very useful feature at headlands or parts of the field which need to be treated differently.



DELUXE

- 44 rotating and 44 stationary counter knives
- 2 manually adjustable speeds for small grain and corn
- 3 minute manual conversion between chopping and dropping
- Chaff is distributed through the chopper or is dropped below the windrow. No separate chaff spreader needed
- No overshot beater and therefore less power required and less weight compared to premium chopper
- Electrically adjustable vane tailboard for spread width up to 9 m

	DELUXE	INTERMEDIATE	PREMIUM
Chopper type	Fine cut	Extra fine cut	Extra fine cut
Knives/Counter knives	44/39	100/49	100/49
Chopper, rpm	2,500	3,000	3,000
Electronically adj. vane tailboard	option	●	●
PowerCast	option	X	X
Advanced PowerCast	X	option	option
Overshot beater with straw slide	X	X	●
Remote chop to drop	X	X	●



INTERMEDIATE

- 100 knife chopper producing one of the finest cuts of straw on the market
- Two manually adjustable chopper speeds for small grain and corn
- 3 minute manual conversion between chopping and dropping
- Chaff is distributed through the chopper in chopping mode or dropped below the windrow in windrow mode. With this chopper you cannot spread the chaff when you are windrowing
- No overshot beater and therefore less power required and less weight compared to the Premium chopper
- Electric Vane Tailboard with low power requirement up to 9 m cutting width or Advanced PowerCast (APC) with two hydraulically driven enclosed discs (recommended above 9 m header width)

PERFECT WINDROWS

The straw bumper kit slows down the straw as it's expelled by the discharge beater. The result is a fluffy windrow which dries faster so you can bale sooner.

PREMIUM

- 100 knife chopper, producing one of the finest cuts of straw on the market
- Two manually adjustable chopper speeds for small grain and corn
- Chop to Drop from cab – switch from chopping straw to dropping windrows at the touch of a button
- In chopping mode chaff and straw are distributed through the chopper. In dropping mode chaff is distributed through the chopper and straw is windrowed. No separate chaff spreader is needed
- Cleaning shoe blows chaff out at the side, away from the windrow, for better quality bales, free of chaff
- Electric vane tailboard with low power requirement or Advanced PowerCast (APC) spreader (recommended above 9 m header width) with two hydraulically driven enclosed discs and a centre divider. The pendulum motion of the central wag distributes material evenly immediately behind the combine





ADVANCED POWERCAST SPREADER. EVEN RESIDUE DISTRIBUTION

The Advanced PowerCast spreader is the perfect solution for even distribution of chopped straw and can be beneficial especially on cutting width above 9 m. Most customers prefer a vane tailboard for cutting widths up to 9 m. It is a cost-effective solution which spreads evenly in windy conditions due to its low mounting. This technology also has the added benefit of lower power and fuel consumption. The spreader accelerates the chopped straw as it passes through the vanes for a wider, more even spread of up to 13.7 m wide.



The direction of spread as well as the width can be conveniently adjusted on-the-go from the cab. After turning at the headland, the push of a button is enough to swap the offset for the direction of spread to compensate for wind direction.

HIGH EFFICIENCY TRACKS

LARGE FOOTPRINT

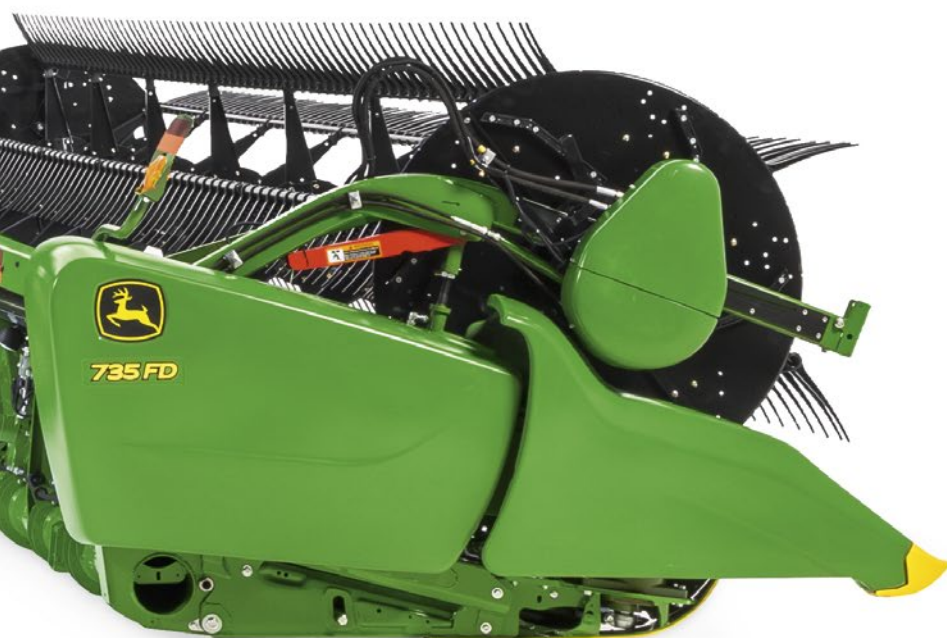
Everyone knows tracks are better than tyres when it comes to unstable ground and muddy conditions, but tracks don't win in every situation. Until now. John Deere Tracks keep you harvesting thanks to our unique new design. What's more, the extra large footprint reduces soil compaction and avoids the need for deep tillage, saving costs all year round.





We've completely rethought the whole concept of tracks from the ground up. The new design represents a leap in performance in every area:

- 20% more comfort and a smoother ride
- 30% larger footprint for less compaction
- 50% increased durability for lower cost of operation
- Choice of 3 track widths for different conditions
- 3.49 m minimum combine width for narrow roads
- No daily maintenance for more uptime
- Up to 40 km/h transport speed on S770-790



You don't have to take our word for the superiority of these new tracks either. In customer tests against a leading competitor the new track design scored substantially higher ratings on all key criteria: ride quality, noise and vibration.

EXCELLENT PERFORMANCE

NEW DESIGN

Our new design retains all the benefits of our previous tracks: retrofitability, hydraulic suspension, 5 contact point technology, positive drive with triangular profile and 'climb out of mud effect'. The rest? All new!



EXCEPTIONAL GRIP. LONG LIFE

The track treads are designed with a higher profile for longer wear life. The deep pattern also provides greater grip. They're also self-cleaning thanks to the 55° angle between the bars which promotes mud release. Tests show the pattern reduces friction with less heat generated which reduces wear by as much as 50% compared to previous John Deere tracks.

ULTRA TOUGH TREAD. SELF-LUBRICATING PROPERTIES

The mid-rollers are made from IPX 2000, an ultra-high-molecular-weight polyethylene. IPX has very low moisture absorption, is highly resistant to wear and self-lubricating.

SINGLE PIECE MOULDED. ADDED STRENGTH

Instead of bonding the tread mouldings to the belt, the new tracks are moulded as a single piece with a 4 layer steel core for added strength and better heat dissipation.

SEALED COMPONENTS. ZERO MAINTENANCE

Apart from being incredibly tough, another advantage of IPX 2000 is its self-lubricating property which reduces wear and tear. Sealed gearboxes and bearings also remove the need for regular greasing. All that's needed is an oil change every 500 hours.

BIGGER FOOTPRINT. NARROWER WIDTH

The tracks are longer compared to the previous design and compared to the design of most of our competitors. This puts more tread on the ground for better grip, lower soil compaction and improved fuel economy compared to wheeled machines. The footprint of our 24 inch tracks is comparable in many cases to 29 inch wide competitive tracks, but with the added advantage of narrower transport width.

TRACK WIDTH/IN (MM)	SURFACE AREA/M²	TRANSPORT WIDTH/M
24 in (610 mm)	1.23	3.49
30 in (760 mm)	1.54	3.79
36 in (910 mm)	1.84	4.55



CONTROLLED TRAFFIC FARMING READY

The 3 m centre to centre tread width reduces the amount of track in the field and long-term soil damage.

ALL-TERRAIN CAPABILITY. EXCEPTIONAL RIDE QUALITY

The triangular design provides good ground clearance and has excellent self-climbing properties in unstable ground. The 5 pivot point design with small distances between the pivot points and rollers ensure the tracks tightly follow the ground for better grip. Another advantage is significantly reduced vibration for better ride quality.

EASY SWITCHING. LOWER COSTS

It makes sense to use tracks during wet harvesting periods, but when it's dry you can switch to wheels and reduce your running costs. Some customers even choose to sell their combine with wheels and keep the tracks for their new combine.

TRAVEL QUICKER. HARVEST FASTER

WITH THE S-SERIES YOU'LL SPEND LESS TIME TRAVELLING TO THE FIELD AND HARVEST MORE HECTARES FASTER.

On the road the ProDrive transmission gives you transport speeds of up to 40 km/h so you'll get to where you need to be faster. In the field it delivers more torque and because of its infinitely adjustable speed, you'll cover more hectares in less time.



PUSH BUTTON SHIFTING

The optional push button shift transmission on S760-S770 makes changing gear easy. Just push one of the three gear buttons and let the combine do the rest. Stopping is easy too. The park brake is automatically engaged in the neutral position so there is no need to push a separate hand brake pedal.



4WD FOR MAXIMUM TRACTION

The two-speed, four-wheel drive option ensures you'll still be harvesting when others have stopped. For extreme conditions the front axle differential lock on ProDrive transmission equipped combines can also be activated at the push of a button on the CommandArm.

THE PRODRIVE ADVANTAGE

ProDrive transmission is an infinitely variable transmission with two ranges and is included as standard on all S780-790 models. Shifting between the ranges is automatic without any stopping and is hardly noticeable.

Producing 64% more torque across the entire speed range, ProDrive delivers impressive acceleration on the road. It also helps you maintain top speed for longer when driving up slopes as more power is transmitted through the mechanical part of the transmission. In the field, ProDrive delivers 95% more torque around 6.5 km/h (average harvesting speed), which is enough to comfortably pull you through muddy areas or uphill with a full grain tank. It also includes a differential lock and HarvestSmart, automatic forward speed management system.

NARROW ROAD TRANSPORT

With an overall width of just 3.5 m you won't be held up by narrow roads or bridges. To achieve this width you can fit tracks or low-pressure super volume tyres up to 710 mm wide. Its long but narrow footprint also saves power and, at the same time, reduces ground compaction.



TIGHT TURNING RADIUS

The combination of large tyres and the short wheelbase of the S-Series produces a tight turning radius for better manoeuvrability.

FUEL SAVING INTELLIGENT SPEED MANAGEMENT

Engine Speed Management automatically controls the engine's rpm during road transport. This produces fuel savings of 10-20%.

40 KM/H TRANSPORT SPEED

The S-Series can be equipped with a range of transmissions offering transport speeds from 20 up to 40 km/h. The 40 km/h top speed greatly reduces transport time on the road so you can spend more time harvesting in the field.

MORE POWER, BETTER FUEL EFFICIENCY

JOHN DEERE POWERTECH

The S-Series features the latest John Deere PowerTech engines which deliver up to 460 kW / 625 PS for the top of the range S790. Compliant with the latest Tier 5 emission regulations, fuel efficiency is better too, with lower diesel and Diesel Exhaust Fluid (DEF) consumption.



SELF-REGENERATING PARTICULATE FILTER

The diesel particulate filter automatically regenerates itself and works in tandem with the diesel oxidation catalyst to reduce emissions.

MORE POWER WHEN YOU NEED IT

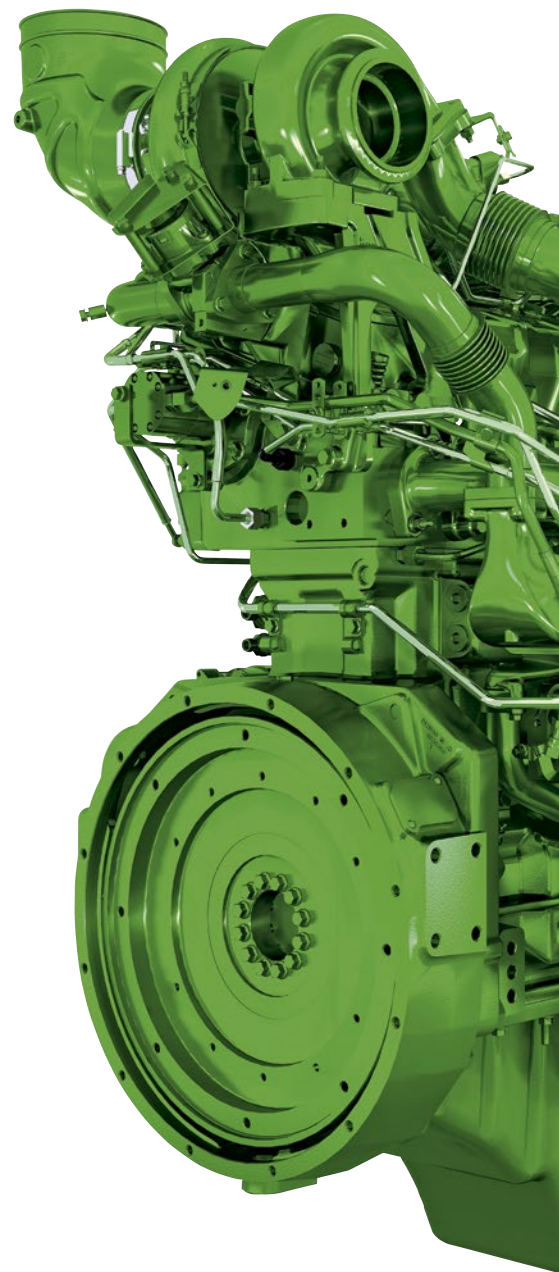
The additional 37 kW / 51 PS power boost lets you carry on harvesting with the same forward speed while you're unloading – with no drop in engine rpm. This ensures the cleaning shoe continues to run at full capacity.

EXCLUSIVE DUST PREVENTION TECHNOLOGY

Engine and exhaust components with surface temperatures above 200°C are covered with high performance insulation material. Some components are also enclosed in our unique pressurised housings which prevent dust penetration.

HIGH CAPACITY COOLING

The cooling package is simple to maintain, but powerful enough to get you through hot harvest days during the peak of the summer weather. Its slim profile and low flow rate prevents it from clogging, reducing maintenance. The position next to the engine allows unobstructed air circulation around the engine and prevents dust and dirt from settling in the corners.



MODEL	DISPLACEMENT	POWER
S790	13.5 l	460 kW / 625 PS
S785	13.5 l	426 kW / 579 PS
S780	13.5 l	403 kW / 547 PS
S770	9.0 l	335 kW / 455 PS
S760	9.0 l	285 kW / 387 PS

DRIVETRAIN RELIABILITY IS BUILT-IN

The S-Series is equipped with discs instead of belt clutches. Gear shifting is smoother which helps prevent the drive belt from 'squeaking' when the engine is started and increases its operating life. The high inertia flywheel also ensures even load distribution which reduces stress on the drivetrain for a longer operating life.

FUEL SAVING ENGINE SPEED MANAGEMENT

Engine speed management improves fuel efficiency by reducing engine rpm from 2,200 (2,100 for 13.5 L engine) to 1,600 during on-road transport and to 1,200 when stationary at junctions and traffic lights.

THE POWERTECH ADVANTAGE

John Deere develops and manufactures its own engines. This is because agricultural off-road machines have completely different requirements to on-road vehicles. Lorry engines used by other brands are designed for variable engine speeds and low torque levels. John Deere engines feature heavier duty housings and bearings to cope with sudden changes in conditions such as high torque levels when harvesting in high yield or wet crops.

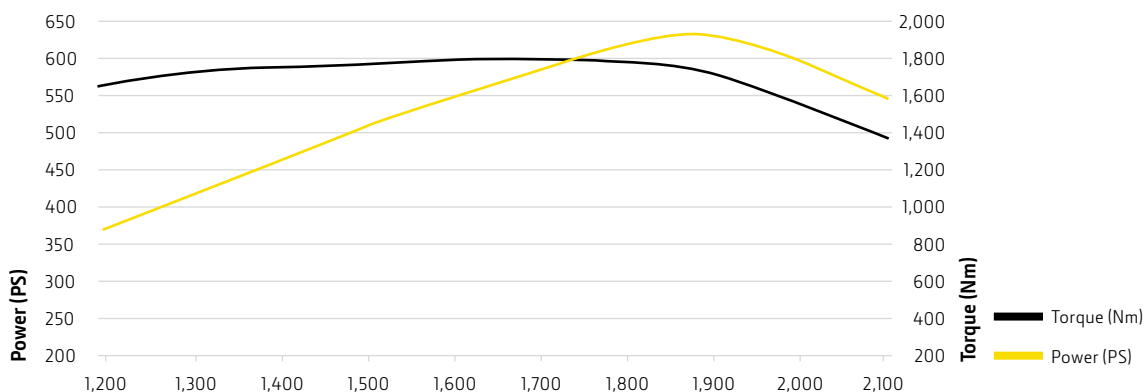
- Over 7 million off-road engines produced
- Over 60 million operating hours with Stage 3B engines
- Over 200 million operating hours with variable geometry turbocharges and exhaust gas recirculation
- The same engines are used across the John Deere product range. This simplifies maintenance thanks to the commonality of parts and servicing procedures.

LOW DEF CONSUMPTION

The 55 L DEF tank only needs refilling after every second full tank of diesel.



S790 WITH 13.5 L ENGINE



THE OPERATIONS CENTRE. YOUR MOBILE OFFICE

Excellent all-round visibility and its ergonomic design make the S-Series cab the perfect working environment. Air conditioning and electric heated mirrors are all part of its high standard specification. While you can add exclusive options such as underfloor heating for a constant working temperature when you're harvesting corn on cold winter days.

But it's more than that. It's your mobile office thanks to the automated functionality of the S-Series. Instead of fine-tuning your settings, you can spend more time doing what matters – optimising your harvest operations.



OPTIONAL NEW SWIVEL SEAT

Now the operator's seat swivels to the side so you can get a quick visual check when unloading without having to stretch and strain.



SECOND DISPLAY

An optional second monitor can be installed just for the guidance and documentation systems, leaving the 4600 CommandCentre display for the main combine functions.



PRACTICAL COMFORTS

There are 5 cup holders, 2 closed compartments, numerous storage areas, power outlets for charging electronics and a 37 L refrigerator – everything you need for a long day's harvesting.



MOVEABLE SCREEN

The CommandCentre display swings to the side for an unobstructed view of the header.

PREMIUM LEATHER PACKAGE

Enjoy the same comfort as premium luxury cars with our optional leather package. The leather steering wheel is complemented by a leather, air-cooled seat which takes the strain out of long harvesting hours. Go on, you deserve it!

SPACIOUS INSTRUCTOR SEAT

The S-Series cab is one of the widest on the market so any passenger has as much room as the operator.



THE COMMANDPRO HYDROHANDLE

CUSTOMISABLE CONTROL

When they were designing the CommandPRO hydrohandle control our engineers looked at every hand-held controller from games players to aircraft. We listened to our customers' demands as well. They wanted more programmable features to customise their harvesting. The result is over 30% more functions than any other combine controller.

As soon as your hand grips the CommandPRO hydrohandle you know this is very different to any other machine you have operated. It fits like a glove. The different buttons are in the perfect position. Even the scrolling wheel at the back is comfortable to the touch. It all feels so completely natural. You can imagine closing your eyes and being able to operate it perfectly. Man and machine working in harmony.

- 
-  Quick Stop Switch
 -  Header Resume Switches
 -  Header Resume Switches
 -  Header Resume Switches
 -  Unloading Auger In/Out
 -  Unloading Auger In/Out
 -  Header Raise/Lower, Lateral Tilt*
 -  Reel Raise/Lower, Reel Fore/Aft*
 -  AutoTrac Resume
 -  Configurable Button
 -  Unloading Engage/Disengage
 -  6 Configurable Buttons

* Fast/slow options for even greater control and faster working



7 PROGRAMMABLE BUTTONS

HARVEST YOUR WAY

Choose the way you want to work: 600X header extension/retraction, 700D belt speed, grain tank cover opening, unloading auger folding, chopping spread direction, feederhouse tilt... and much, much more. Individual buttons can be programmed via the touch screen on the Generation 4 CommandCenter.

Control Setup: If you have different operators they will love the fact that they can all store their own individual settings for the CommandPRO hydrohandle and display using the time-saving setup control feature.

GENERATION 4 COMMANDCENTER. INTUITIVE HARVESTING

The combination of the CommandPRO hydrohandle control and the latest generation 4600 CommandCenter display brings a completely new, more modern experience to operating a combine. The 10 in (24.5 cm) touchscreen with its smartphone inspired navigation is the gateway to the S-Series automated control systems. Independently adjustable both up and down and front and back you can get the perfect working position.

FASTER NAVIGATION

Logical menus and a comprehensive shortcut bar make navigating easy. For instance, with Quick Line you can now record an AB line with just one button press.

AUTOMATIC TWO-WAY DATA TRANSFER

With JDLink the Generation 4 CommandCenter is automatically connected to the Operations Center on MyJohnDeere.com wirelessly. You can easily send setup files from office to field and yield maps and totals from field to office.



TURN NIGHT INTO DAY

Now you can work just as accurately at night as you can in the day. The S-Series is equipped with 10 lights at the front as standard, with the option of adding two extra lights for wider headers. The LED package includes 4 cab headlights. On top there's also a service light package which comes as standard with all Premium cabs (optional on the Deluxe Cab). You can also create separate lighting configurations for different scenarios such as on the road or in the field.

CUSTOMISABLE SCREENS

The standard menus were developed through our customer in-field test programme, but you can customise them using the layout manager function to suit yourself. Just drag and drop the functions you want to create your own personal screen layouts. Then store them for future use.



BLUETOOTH AND DATA CONNECTIVITY

The optional Bluetooth premium radio is equipped with a microphone for clear and easy handsfree calling. What's more, your address book and other media can be displayed on the new Generation 4 CommandCenter. There are also 2 USB charging points on the CommandArm and an Ethernet cable socket in the corner post for additional data connectivity.

ERGONOMIC DESIGN

There are 10% less buttons than the previous CommandCenter. Buttons are grouped together for functional areas. They are backlit too, like premium computer keyboards, so you can easily see them in the dark.

INTUITIVE SYMBOLS

Symbols are designed to be intuitive and many will already be familiar to John Deere operators. The logical button layout has also been designed so you can operate them by touch, without taking your eyes off what really matters.

QUICKER SET-UP

The Settings Manager reduces the set-up time for different jobs as you can store previous settings such as the concave clearance and drum speed and call them up in seconds.

BUILT IN HELP FUNCTION

The Generation 4 CommandCenter with its powerful 4600 processor also includes a help function so you can get instant assistance if there is something you're unfamiliar with. Your John Deere dealer can also remotely log on to the CommandCenter to assist operators with machine setup and operation through Remote Display Access.

INTEGRATED CAMERA INPUT

You can view up to 4 cameras in the display at once with automatic activation to display a function when it's important e.g. unloading.

HIGHER PRODUCTIVITY. LOWER STRESS

AUTOMATIC CONTROLS IMPROVE ACCURACY AND BOOST PERFORMANCE

AUTOTRAC. HIGH PRECISION AUTOMATIC STEERING

All models are Autotrac ready. All you have to do is add a receiver and you're ready to go.

AutoTrac hands-free guidance automatically matches the full cutting width of your platform with every pass. Hour after hour. It never tires. With AutoTrac doing the driving you'll reduce your input costs and boost your combine performance.

If you're working with multiple machines, the AutoTrac guidance lines can be shared from one machine to another. They can also be shared with the grain trailer operator, ensuring the combine and trailer drive exactly parallel when unloading.

John Deere in-field data sharing shows where other combines have already been in the field. It also gives you a more accurate calculation of the total hectares harvested. It greatly helps to navigate especially during the night.

When you're harvesting corn, AutoTrac Row Sense takes away the added stress of following rows and improves productivity. It brings together automatic steering and row guidance, using row feelers on the header to increase harvesting speed.



HARVEST SETTINGS. THE RIGHT SETTINGS FOR DIFFERENT CROPS

Harvest Settings helps you effortlessly transition between different crop types. By using standard John Deere values and retrieving data on your current threshing and separating conditions, it automatically adapts your machine to optimise performance.

HARVESTSMART. ALWAYS THE RIGHT SPEED

The HarvestSmart system automatically adapts the speed of the combine to maximise capacity or minimise losses whilst maintaining the highest output. Sensors on the threshing cylinder and the engine as well as dedicated loss sensors control the system. In capacity mode you are operating the combine at the combine's capacity limit. Using the loss mode you are able to maintain a constant low loss level. The updated algorithm for the S700 is a true step forward as it takes multiple calibration points of the engine load and the loss levels. It's also easier to use as it automatically recognises headlands and other situations.





GOHARVEST APP

The GoHarvest app makes setting up easier as it suggests initial settings for the specific crop type. It also documents changes made to settings during harvest and the Seed Loss Calculator helps reduce losses.

STARFIRE 6000 RECEIVER. TOP-OF-THE LINE PRECISION

The new StarFire receiver has better signal stability and many advantages over laser technology. It enables work in beds and also works reliably in hilly conditions, dust or down crop. What's more, there's no risk of damaging a sensor when working close to hedges.

It operates with three different pass-to-pass accuracy levels:

- SF1 15 cm in-season repeatability (available free of charge)
- SF3 3 cm in-season repeatability
- RTK 2.5 cm long-term repeatability



MOBILISE THE POWER OF DIGITAL CONNECTIVITY

THE CONNECTED COMBINE

The S700 provides data connectivity and a level of automation that can transform your harvesting operational efficiency by up to 20%. We've pioneered this technology from the earliest satellite guidance developed with NASA almost 20 years ago. Fully integrated, you'll find our systems work seamlessly together with a common interface so you can move from machine to machine with ease.



THE CONNECTED COMBINE PACKAGE

The Connected Combine package is a series of integrated productivity tools that have been shown to improve harvesting operational efficiency by up to 20%.

- Interactive Combine Adjust (ICA)
- AutoTrac – automatic steering
- JDLink
- Connected customer support
- Operations Center data connectivity
- FarmSight dealer services



20% MORE WITH ICA¹

Independent studies have shown that ICA improves the utilisation of the combine's capacity by up to 20%. ICA lets you select one or several areas for optimisation and the interactive tool suggests settings based on your priorities (losses, clean grain tank, broken kernels, straw quality). It even suggests adjustments to the combine's hardware, such as changing a pulley or a concave.

KEEP USING 20% MORE WITH ICA2

When your desired level of optimisation is reached you can activate ICA2 to maintain that level until you change to another crop. ICA2 automatically makes the required adjustments needed to maintain your desired output level in terms of grain quality and loss level – that's the exclusive ICA2 automation advantage of the John Deere S700!



AUTOTRAC AUTOMATIC STEERING

While AutoTrac is steering your combine you have time to control the harvesting process or optimise the machine with ICA. Eliminating gaps and overlaps you can expect up to 8% savings on inputs² and a productivity increase of up to 14%³.

OPERATIONS CENTER CONNECTIVITY

The Operations Center on MyJohnDeere.com is the hub of all your data. Store field locations, track the progress of your machines, assign work orders to your operators, view yield and moisture maps as well as create, analyse and share harvest reports with trusted advisors and customers. What's more, you can access it from any internet enabled device.

CONNECTED SUPPORT

In no time your dealer can connect to your combine to assist with set-up and fix any issues quickly without the need to drive out to you. Using JDlink machine to office connectivity you, or your dealer, can use tools like Remote Display Access to view the CommandCenter display live. Even information on the machine's health and certain software updates can be carried out remotely.

FARMSIGHT DEALER SERVICES

A FarmSight Service Agreement will be offered in addition to our Connectivity package and comprises services that are executed by your John Deere dealer. You benefit from operator training, support and machine performance feedback to maximise machine performance and uptime. With your permission your dealer can remotely monitor your machines and provide additional services. For instance, the Premium package increases uptime and enhances performance. By remotely monitoring your machine's health your dealer can identify potential issues and fix them before they stop you from harvesting.

¹ From 'dlz agrarmagazin' 6/2017

² From 'Lohnunternehmen' 1/2010

³ From 'Landtechnik' 6/2006

A SINGLE VIEW OF YOUR BUSINESS

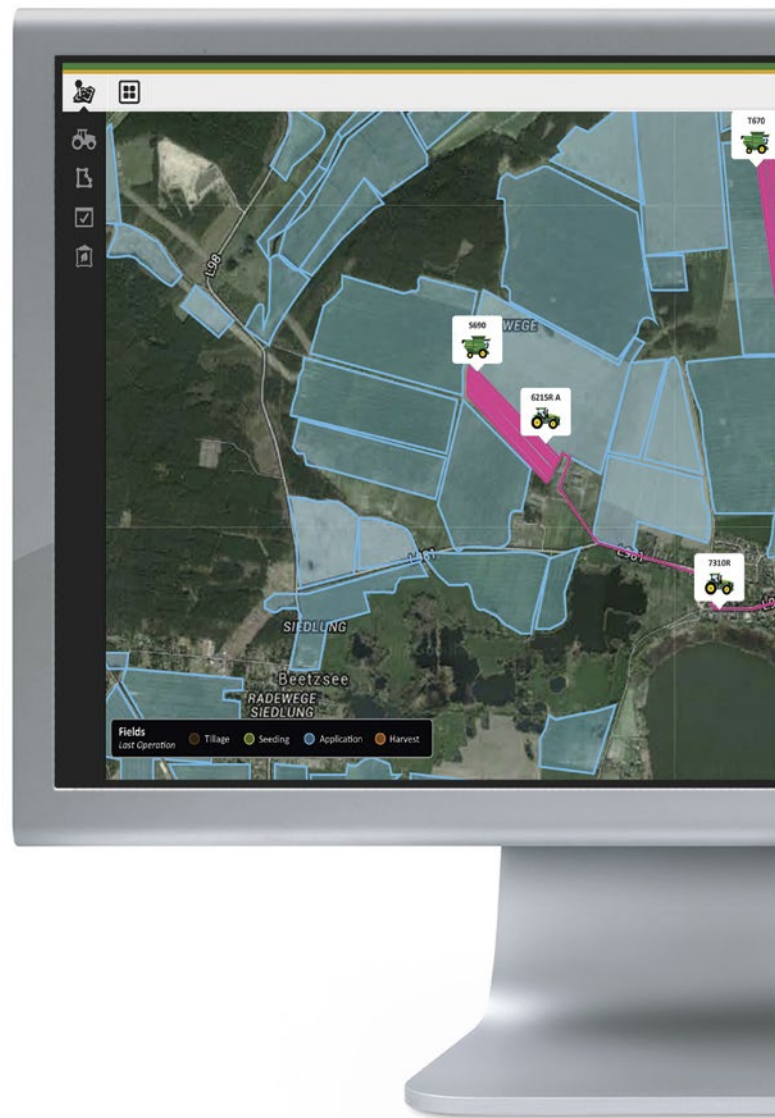
You need to coordinate your fields, your machines, your operators and make sure all your documentation is in order. Organising your entire business is a daily challenge and a lot of stress. Thanks to our connected farm management solutions we make it much easier every day for thousands of farmers worldwide. Our developers are constantly making improvements and adding new services so you'll be able to access even more functionality in the future.

CONNECTED TO YOUR MACHINE

JDLink is the secret to your combine's connectivity. It enables the connection between you, your machine and your office. You want to know where your machines are currently working and how they are performing? You want to see machine alerts in time to ensure machine health for the harvesting period? Then go for JDLink Access + RDA or JDLink Connect.

JDLink Access lets you view machine locations and monitor performance such as fuel consumption and machine utilisation (idling, working and transport time). Through Remote Display Access you or e.g. your dealer can remotely assist your operators with machine setup and operation using a John Deere display.

JDLink Connect provides even more value in addition to the JDLink Access + RDA capabilities through Wireless Data Transfer (WDT), which allows for seamless documentation and setup data exchange (e.g. yield data, moisture) between your machine and the office.

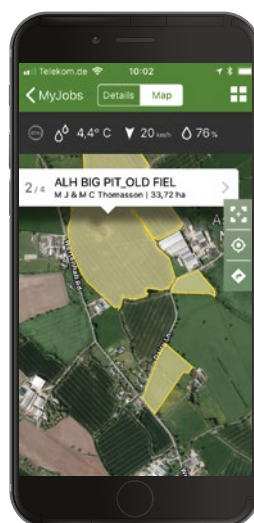
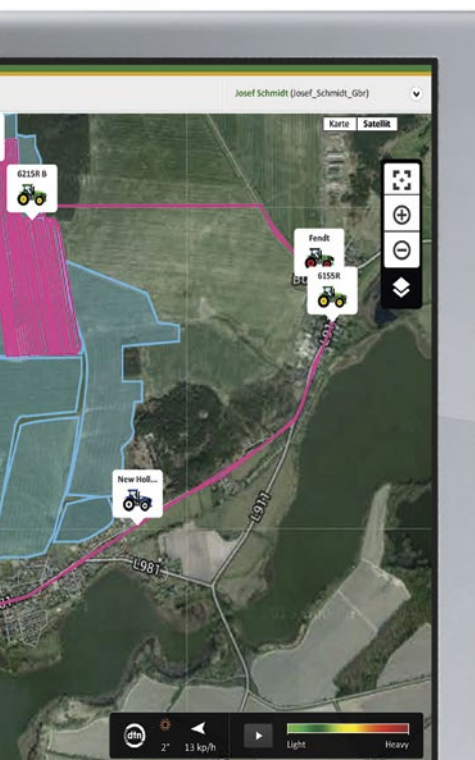


CONNECTED TO YOUR FARM

The **John Deere Operations Center** on MyJohnDeere.com is the online platform for your entire operation. On one map you can get a complete overview of your fields, understand where your machines are and the progress of the operation.

Display setup information (e.g. field boundaries, guidance lines) can be prepared in the Operations Center and shared with your combine prior to the harvesting season, so you can save time in the field and ensure error-free documentation. The files can be sent wirelessly to your machines and will automatically pre-populate the CommandCenter 4600 display. There's no need for manual data transfer using USB drives or storage cards. Job done!

As soon as a field is harvested your documentation data is automatically uploaded to your personal Operations Center account. There you can view the results, analyse and compare different map layers and print out reports.



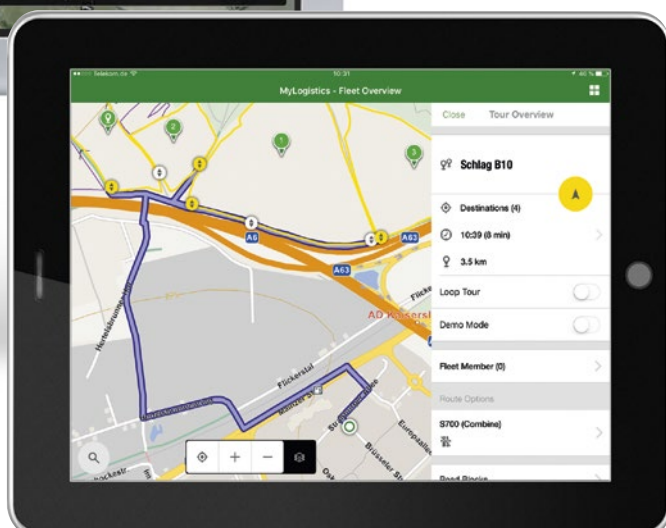
MANAGE YOUR HARVESTING TEAM MORE EFFICIENTLY

Using **MyJobConnect** you can coordinate your harvesting operations better than ever before. There's no need for bits of paper, phone calls to different members of the team and magnetic boards in the office.

You'll find all your information is now in work order. Each member of your team knows what to do and has all the relevant information available: machine, customers, fields, settings, guidance lines and more. What's more, you can see the current status of your jobs and give your customers more precise time commitments and progress updates.

Stop searching for the right way to the right field. Start with your work immediately.

MyJobConnect Premium adds an AG navigation system including secondary roads. With one click you get an optimised route to the field or the lead machine. Forget about unnecessary detours, the app takes into consideration road restrictions (e.g. width, height and weight) and calculates the best route.



TAKE YOUR DATA WITH YOU

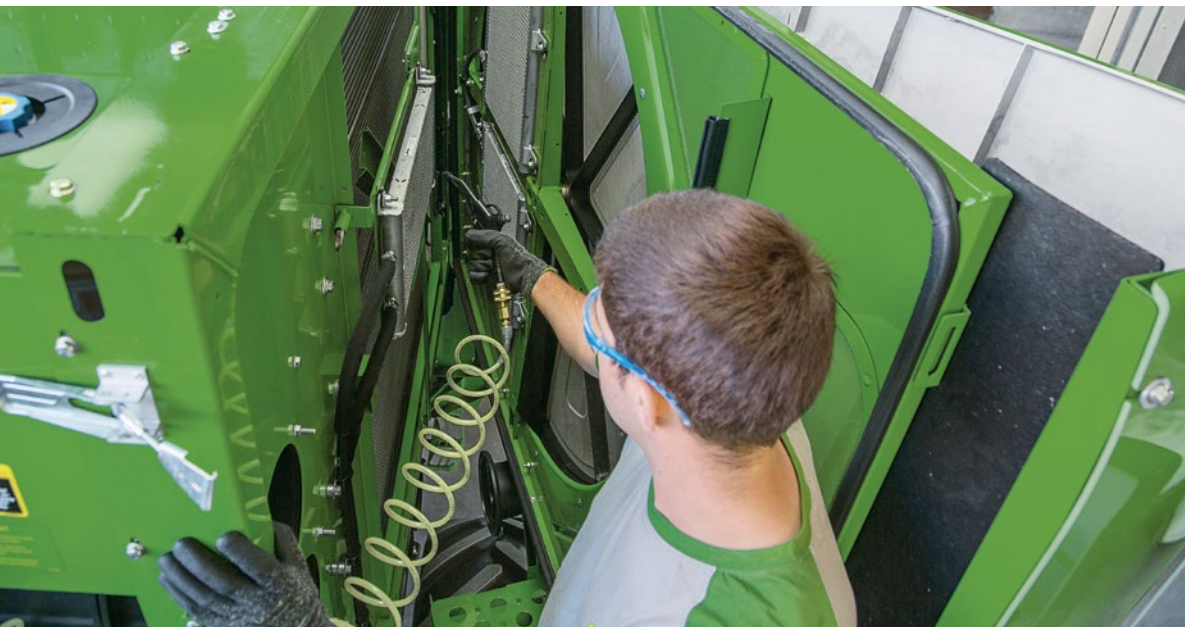
Always knowing where your machines are and what they're doing is vital to managing your farm. The free **MyOperations** app empowers you as a farmer to know what's happening in your fields at the same time being able to see John Deere Operations Center documentation data from past field operations (harvest, seeding, application, tillage) anywhere, anytime from your smartphone.

For your John Deere S700 combine you can remotely view the Threshing Clearance, Threshing Speed, Cleaning Fan Speed, Chaffer Clearance, and Sieve Clearance settings within the MyOperations App.

LESS SERVICING AND MAINTENANCE

MORE TIME HARVESTING

We've designed the S700-Series to minimise maintenance schedules and servicing requirements so you can spend more time harvesting. For instance, there is no central lubrication system, no daily lubrication points either and fewer chains and belts than other combines. When you do need to carry out any checks to the engine, rotor or cooling system you'll also find they're designed for easy access.



FAST CROP TO CROP CONVERSION

We've designed everything to minimise time switching between crops so you're not held up when moving from field to field. We designed it with the customer in mind and focused on using levers and buttons instead of screws and heavy components located in difficult to reach, dusty areas.

KEY ADVANTAGES INCLUDE

- Easy access to the rotor for changing the concaves and adding de-awning plates.
- The cover plate for the grain tank cross augers can be adjusted without any tools.
- Switching from barley to rapeseed with the 600X header takes less than 3 minutes with no tools needed.
- Only 15 grease points every 50 hr, 1 every 200 hr and just 19 every 500 hr.

ON-BOARD AIR COMPRESSOR

A new air compressor with 60 L reservoir, two connections and a 10 m hose is the perfect tool to blow off that debris at the end of the day and keep your combine ready for the next day.

HAND WASH TANK

Now you can clean your hands after making adjustments in the field.

ALWAYS THERE FOR YOU. GUARANTEED

To guarantee you always benefit from a first-class harvesting service, before, during and after harvest, our dealers pass a rigorous certification programme. Please challenge us – we are prepared!

Simply ask your certified John Deere Harvesting Partner.

EXPERTS IN PLACE

Certified dealers have full-time harvesting experts in place on the sales and service side. They'll help you find the right model and specification required for your operation and are available during extended opening hours in season through dedicated hotlines. Factory trained experts set up your combine prior to the season and visit you in the season to make sure your machine is always running at the optimum performance level.

24HR PARTS DELIVERY

Your Harvesting Partner takes advantage of the John Deere dedicated overnight parts delivery system day in day out and can provide more than 97% of all required parts within 24 hours to keep you moving.

BACK UP MACHINE

Your dealer keeps you harvesting during those long harvesting days and will provide a back-up machine if service work is required.

OPERATOR TRAINING

Factory trained experts at certified dealers will provide professional driving training not just when you take delivery of your new combine, but they will be on-hand for refresher courses season after season.



NEXT SEASON IS
RIGHT NOW

EXPERT CHECK

... on over 180 points. Only your John Deere dealer can provide pre-season expertise to ensure your combine is ready for the next season.



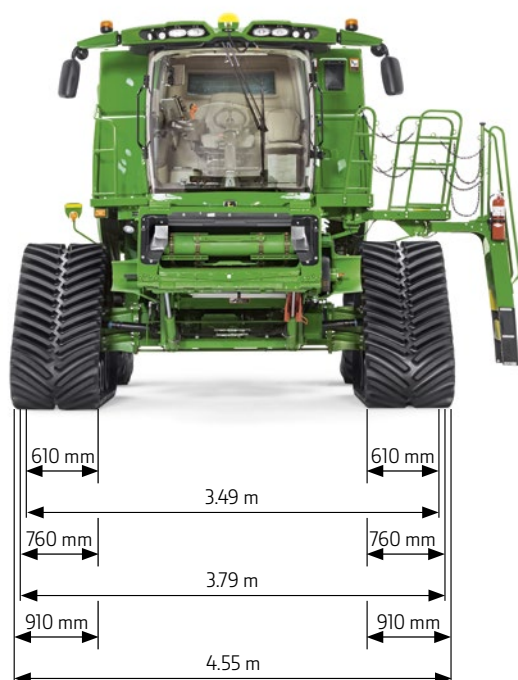
FREE OPERATOR PACKAGE AND TOOLKIT

Every combine comes with a toolbox with everything you need for regular servicing and maintenance. What's more, every operator also receives a set of overalls, shirt, cap and a vest. We even take care of your refreshments with a coffee mug as well!

S700 SERIES SPECIFICATION

	S760	S770	S780	S785	S790
ENGINE					
	John Deere PowerTech PSS Engine, 6 Cylinder, twin turbo charger with fully automatic EGR and SCR technology				
Emission Level	Stage V	Stage V	Stage V	Stage V	Stage V
Displacement (l)	9	9	13.5	13.5	13.5
Rated speed	2200	2200	2100	2100	2100
Rated power ECE R120 (KW/hp/PS)	249/334/339	292/392/397	353/473/480	373/500/507	405/543/551
Max Power ECE R120 (KW/hp/PS)	285/382/387	335/449/455	402/540/547	426/571/579	460/617/625
Boost (kW/hp/PS)	25/34/34	25/34/34	37/50/50	37/50/50	37/50/50
Engine Speed Management	NA	incl. w/ ProDrive	Base	Base	Base
Fuel tank capacity, base/option (l)	950		1250		
DEF tank capacity (l)	54.9				
Air Compressor	Option				
FEEDERHOUSE					
Conveyor chains regular feederhouse	4				
Conveyor chains HM feederhouse	Not Available	3			
Slip Clutch	1200 nm forward/1400 nm reverse				
Header reverser	Mechanical reverser				
Feederhouse Speed, m/sec (fix speed)	3.4 (26 tooth sprocket)				
Cutting angle adjustment, °	17				
THRESHING & SEPARATION					
TriStream rotor with fixed crop flow (not on HM)	Available	Available	Available	Available	Available
Variable Stream rotor with long front cone, rear cone, actively adjustable crop flow in separator	Available	Available	Available	Available	Available
Rotor length (mm)	3124	3124	3124	3124	3124
Rotor diameter (mm)	762	762	762	762	762
Shiftable rotor speed ranges, corn/small grain (rpm)	210-550/ 380-1000	210-550/ 380-1000	210-550/ 380-1000	210-550/ 380-1000	210-550/ 380-1000
Threshing area (m²)	1.1	1.1	1.1	1.1	1.1
Rotor separation area (m²)	1.54	1.54	1.54	1.54	1.54
Discharge beater grate separation area, premium residue/deluxe + intermediate residue (m²)	0.36/0.52	0.36/0.52	0.36/0.52	0.36/0.52	0.36/0.52
DYNAFLO PLUS CLEANING SYSTEM WITH AUGER TYPE PREPARATION SYSTEM FRONT CHAFFER, CHAFFER AND SIEVE					
# of conveying augers	4				
Active tailings reuturn	Not Available		Base		
Single range fan drive (RPM)	620-1350				
Front-Chaffer (available as attachment) (m²)	0.7				
Pre-Chaffer (m²)	0.5				
Chaffer (m²)	2.5				
Sieve (m²)	2.2				
TOTAL cleaning Shoe area with / without front-chaffer according to ISO Norm 6689: 1997 (m²)	5.9/5.2				
Active Terrain Adjustment	Option				
Electric Sieve adjustment	Base				
GRAIN TANK					
Volume acc. ANSI/ASAE S312 norm (l)	10600	10600	14100 (10600 for HM)	14100 (10600 for HM)	14100 (10600 for HM)
Unloading auger swing range (deg.)	105				
Standard unloading system at peak performance (l/sec)	120	120	135 (120 for HM)	135 (120 for HM)	135 (120 for HM)

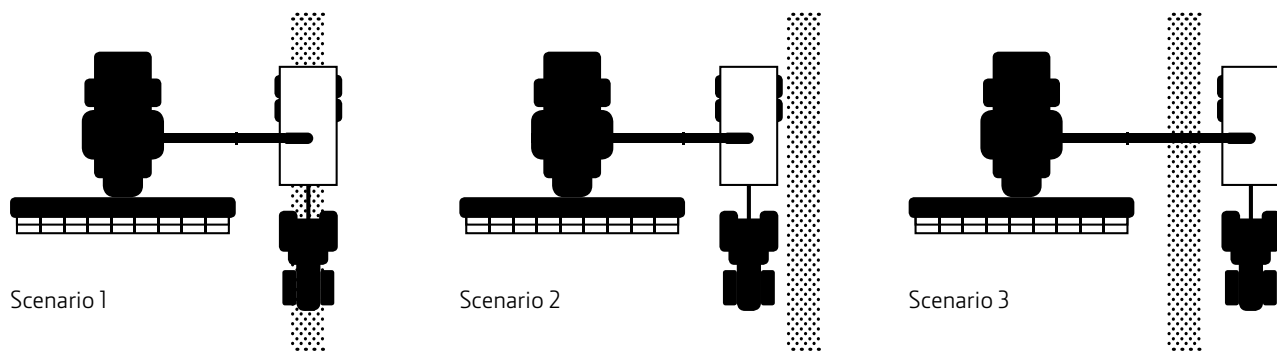
	S760	S770	S780	S785	S790
RESIDUE MANAGEMENT					
Deluxe Residue – Manual adjustable Vane Tailboard Fine Cut Chopper (44 knives), Integrated Chaff Spreader	Available	Not Available	Not Available	Not Available	Not Available
Deluxe Residue – In-cab electrically adjustable Vane Tailboard Fine Cut Chopper (44 knives), Integrated Chaff Spreader	Available	Available	Not Available	Not Available	Not Available
Deluxe Residue – In-cab operator controlled PowerCast Powered Tailboard with wind compensation Fine Cut Chopper (44 knives), Integrated Chaff Spreader	Not Available	Not Available	Not Available	Not Available	Not Available
Intermediate Residue – In cab operator controlled Electric Vane Tailboard Extra Fine Cut Chopper (100 knives), Integrated Chaff Spreader	Not Available	Available	Available	Available	Available
Intermediate Residue – Advanced PowerCast powered tailboard with In-cab operator controlled wind compensation Extra Fine Cut Chopper (100 knives), Integrated Chaff Spreader	Not Available	Available	Available	Available	Available
Premium Residue – In-cab operator controlled Electric Vane Tailboard Extra Fine Cut Chopper (100 knives), Integrated Chaff Spreader, Remote chop to drop door	Not Available	Available	Available	Available	Available
Premium Residue – Advanced PowerCast powered tailboard with In-cab operator controlled wind compensation Extra Fine Cut Chopper (100 knives), Integrated Chaff Spreader, Remote chop to drop door	Not Available	Available	Available	Available	Available
SIDE-HILL SYSTEMS					
HillMaster (inclines up to 15%)	NA	Option			
Side Hill Kit (for non HM machines)	Option				
GROUND DRIVE					
Electrical Push Button Shift 3-Speed Transmission	Base		Not available		
ProDrive Stepless Transmission	Not available	Option	Base		
Speed with wheels (km/h) (depending on country & homologation)	20/25/30	20/25/30/40	20/25/30/37/40		
Speed with tracks (km/h) (depending on country & homologation)	NA	20/25/30/40	20/25/30/40		
4WD	Option				
John Deere 600DT Deluxe Tracks	NA	Option			



S700 SERIES SPECIFICATION

	S760	S770	S780	S785	S790
TRANSPORT WIDTH TYRES					
With 600DT Deluxe Tracks (m)	NA		3.49		
VF710/70R42 R42 (m)			3.49		
IF800/70R38 (m)			3.79		
IF900/60R38 (m)			3.99		
Maximum Shipping height with tyres (m)			4		
Shipping length (with 6.9 m folding unloading auger) (m)			9.1		
TRANSPORT WIDTH TRACKS					
John Deere Tracks 24" (m)	NA		3.49		
John Deere Tracks 24" + 65 mm spacer (3 m centre to centre for CTF) (m)	NA		3.59		
John Deere Tracks 30" + 65 mm spacher (m)	NA		3.79		
John Deere Tracks 30" + 394 mm spacer (m)	NA		4.40		
John Deere Tracks 36" + 395 mm spacher (m)	NA		4.55		
INTEGRATED TECHNOLOGY					
Mass Flow and Moisture Sensor			Base		
Active Yield + Mass Flow and Moisture Sensor			Option		
HarvestDoc Yield Documentation			Option		
HarvestSmart Automatic Forward Speed Regulation	NA	Option	Base		
AutoTrac Guidance			Option		
Guidance Signal Availability			SF1, SF3, RTK		
AutoTrac Row Sense Guidance for corn headers			Option		
Harvest Setup			Base		
Interactive Combine Adjustment (ICA)			Base		
Combine Advisor Package incl ICA, ICA2 and ATA			Option		
ConnectedCombine			Option		
JDLink			Option		
Remote Display Access			Option		
Wireless Data Transfer			Option		
Data Analysis			Available via MyJohnDeere.com		
MyJobConnect			Available via App		
Machine Sync			Option		
CAB					
Operator Seat			Air suspension seat with swivel and fore-aft & lateral attenuation		
Leather Package	NA		Optional leather steering wheel, instructor seat, heated/air ventilated operator seat		
Passenger Seat			Base		
Gen 4 CommandCenter 10" Touchscreen display			Base		
CommandPro hydrohandle			Base		
Cameras			Optional (up to 4)		
Active Refridgerator			Base		
Automatic Air Condition and Heating			Base		

SPECIFICATION – UNLOADING AUGER COMPATIBILITY



PLATFORM \ AUGER LENGTH	S760, S770, S780, S785, S790			
	5.6 m	6.9 m*	7.9 m*	8.7 m
615P	depending on windrower cutting width			
620R/ 620PremiumFlow/ 620F	run on windrow	Scenario 3	Scenario 3	Scenario 3
622R/ 622X/ 722PremiumFlow/ 622F	Scenario 1	run on windrow	Scenario 3	Scenario 3
625R/ 625X/ 725PremiumFlow/ 725D/ 625F	Scenario 1	Scenario 1	run on windrow	Scenario 3
630R/ 630X/ 730PremiumFlow/ 730D/ 630F	Scenario 2	run on windrow	Scenario 1	run on windrow
635R/ 635X/ 735PremiumFlow/ 735D/ 635F	not compatible	Scenario 2	run on windrow	run on windrow
640X/ 740PremiumFlow/ 740D	not compatible	very close to FEE	Scenario 2	Scenario 2

* Available as folding unloading auger and rigid unloading auger

CONNECTIVITY PACKAGES

Connectivity Packages S700 Series

	PREMIUM	ULTIMATE
AutoTrac Ready	●	●
4600 CommandCenter	●	●
Gen 4 Extended Monitor	–	●
Gen 4 (CommandCenter) Premium Activation	●	–
Gen 4 (CommandCenter) Ultimate Activation	–	●
ICAI	●	●
JDLink*	●	●
MyJobConnect or MyJobConnect Premium**	○	●
StarFire 6000 – SF1	○	○
StarFire 6000 – SF3	○	○

Legend: ● base; ○ optional; – excluded

* 1st year JDLink Connect / 2nd - 5th year JDLink Access

** MyJobConnect Premium (only DE, UK, FR, NL, DK)

Elements of the Connectivity Packages are a limited promotional offer and include time based subscriptions. Be aware that some of the Connectivity Packages as well as elements could not be available in all regions. Please contact your local John Deere dealer for availability.

The S700 Series is designed for years of high performance use. The single rotor design is unique to John Deere and offers clear operational and business benefits with better grain and straw quality, lower losses and excellent fuel efficiency. Now it's backed up by the best support package in the business, Harvest Promise. 24 hr parts support, a network of highly trained technicians and the promise of a replacement combine gives you everything you need to harvest with confidence.

NOTHING RUNS LIKE A DEERE



This literature has been compiled for worldwide circulation. While general information, pictures and descriptions are provided, some illustrations and text may include finance, credit, insurance, product options and accessories not available in all regions. Please contact your local dealer for details. John Deere reserves the right to change specification and design of products described in this literature without notice. The green and yellow colour scheme, the leaping deer logo and the JOHN DEERE word mark are trademarks of Deere & Company.