

G-SERIES
EXCAVATORS



JOHN DEERE

350G LC / 380G LC



**HEAVY
HITTERS**



RELIABLE



PRODUCTIVE



M



MUSCLE UP.



PUT MORE WORK WITHIN REACH.

Whether you're loading trucks, digging trenches, demolishing structures, or placing pipe, you'll get more done with our G-Series Excavators. Customer-inspired upgrades include Powerwise Plus™ technology that boosts performance on demand. Standard pattern-control switch for more effortless operation. Reimagined cab comforts. Plus options such as hydraulic single-pedal propel system, deluxe LED lighting, and debris-deflecting track-frame undercover. The 350G LC and 380G LC deliver what you've come to expect in midsize John Deere excavators, so you can rely on doing more.

INPUT = OUTPUT

YOUR IDEAS HELP US INNOVATE.

When we redesigned our 350G LC and 380G LC Excavators, we put some good ideas to work — yours. Read on to see what you inspired us to add to the equation.

Keep it clean

Optional adjustable rotary precleaner pulls clean air into the system — a must in harsh jobsite conditions.

Control pattern

Pattern-control switch is now a standard feature instead of a field-kit option.

Waste not

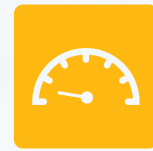
Auto-idle speed can be lowered to a more fuel-efficient 800 rpm.

Performance plus

Powerwise Plus technology delivers fuel-efficient power when you need it.

Going forward

Hydraulic single-pedal propel system enables straight-line machine tracking without articulating both hand and foot pedals.



SET AUTO-IDLE
TO 800 RPM TO
SAVE FUEL



STANDOUT FEATURE



POWERWISE PLUS™
TECHNOLOGY.



NOW THAT'S A PLUS WORK HARDER. AND SMARTER.

Who says you have to choose between working harder and working smarter? With our Powerwise Plus hydraulic-management system that delivers on-demand muscle, these excavators do both — combining their extra ability with typically smooth operation and finesse. Add three power modes and power boost, and these excavators provide what you need to give productivity an extra push. Combining brawn and brains, our G-Series is a wise choice.

Utility tools

Low-effort joysticks, smooth multifunction operation, and masterful metering deliver the control and finesse you need for utility work.

Cycle times

Generous flow, arm force, and swing torque help speed cycles. So you can do your best to stay on schedule or ahead of the weather.

Need a boost?

When the task calls for a little extra, press the power-boost button on the right-hand control and muscle through.

Intuitive technology

John Deere Powerwise Plus technology delivers on-demand power when you need it. Precise pump flow when the pilot controls are metered provides reliable, fuel-efficient performance.

Extra able and stable

The 380G LC has extra stability and lift capacity. Its standard heavy-duty boom, 10-ft. 6-in. heavy-duty arm, and durable undercarriage provide the stamina and strength to handle demanding pipe-line, demolition, and scrap-handling tasks.



PRESS POWER
BOOST FOR
**MORE
MUSCLE**





TURN UP THE COMFORT

OPERATING EASE TAKES A TURN FOR THE BETTER.

Refined LCD monitor employs a rotary control that makes it quick and easy to tap into an abundance of performance and convenience functions and features. Single-pedal propel keeps the machine moving straight forward. Operators will also appreciate the comfortable fabric-covered high-back seat and increased legroom in the spacious, well-appointed cab. As always, virtually unobstructed all-round visibility, low-effort joysticks, a highly efficient HVAC system, and numerous other amenities provide what you need to do your best work.



3-WAY ADJUSTABLE
**PREMIUM
LEATHER SEAT**
(OPTIONAL)

Stow your stuff

There's no shortage of storage in here. There's a place for a cooler, cup holders, and even a hot/cold box that keeps beverages at just the right temperature.

Put some light on it

Optional deluxe LED lights at cab front and rear, boom, and toolbox illuminate when your workday extends beyond daylight. They use less power, output more light, last longer, and are easy to replace when needed.

It's easy to see

Wide expanse of front and side glass, narrow front cab posts, large overhead glass, and numerous mirrors provide virtually unobstructed all-around visibility. If you need to see more, choose the optional rearview camera that displays the action behind on the monitor.

Pedal propel

Hydraulic single-pedal propel system moves the machine when and where you need it to without having to articulate both the hand and foot pedals.

Calm, cool, and collected

Automatic, high-velocity bi-level climate-control system with automotive-style adjustable louvers helps keep the glass clear and the cab comfortable.

Take control

Ergonomically correct short-throw pilot levers provide smooth, predictable fingertip control with less movement or effort. Push buttons in the right lever allow fingertip control of auxiliary hydraulic flow for operating attachments.

Dial it up

Multi-language LCD monitor and rotary dial provide intuitive access to a wealth of information and functions. Just turn and tap to select work mode, access operating info, check maintenance intervals, source diagnostic codes, adjust cab temperature, and tune the radio. A USB port helps keep you digitally connected.

We've got your back

Sculpted mechanical-suspension high-back seat with 10.5 in. of travel slides together or independent of the joystick console. Opt for a premium air-suspension leather seat that adjusts three ways, is thermally heated and actively cooled, and includes a high-visibility orange seat belt.



**ROTARY
PRECLEANER**
PULLS CLEAN AIR IN

DURABLE AND DEPENDABLE

NOTHING IS BUILT LIKE THESE DEERE.

Things are tough on most jobsites. So we equipped the 350G LC and 380G LC with some equally tough features. Industry-exclusive double-seal swing bearing that delivers rock-solid durability. Mainframe single-sheet undercover thickened for added strength. Options like a track-frame undercover to keep debris from accumulating and an adjustable rotary precleaner that pulls clean air into the system no matter how harsh conditions are outside. When you consider how tough they're built, you'll run these Deere.

Wear coating

Tungsten-carbide coating creates an extremely wear-resistant surface to protect the bucket-to-arm joint.

Designed for durability

Reinforced D-channel side frames provide maximum cab and component protection. Standard mainframe and optional track-frame undercovers add an extra layer of defense.

Stress resistance

A John Deere exclusive, three welded bulkheads within the boom resist torsional stress.

Get good grades

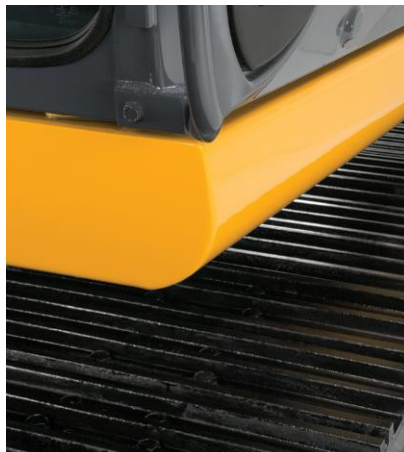
Optional grade-reference system includes sensor mounts to help speed installation, eliminating the need to grind, weld, and repaint. Our open-architecture system design allows you to employ your favorite brand of grade-control system to help maximize productivity and uptime while lowering daily operating costs.

Pattern of protection

Standard pattern-control switch and fuel shutoff are well protected yet conveniently accessible at ground level.

FT4 engine technology

John Deere PowerTech FT4/Stage IV diesel engines meet emission regulations without sacrificing power or torque. We built on our Interim Tier 4 (IT4)/Stage IIIB solution to deliver the best combination of performance, efficiency, and reliability. Our field-proven technology is simple, fluid efficient, fully integrated, and fully supported. It employs cooled exhaust gas recirculation (EGR), easy-to-maintain high-uptime exhaust filters, and selective catalytic reduction (SCR).



SIMPLIFIED SERVICE

IT'S ALL ABOUT UPTIME.

At a glance

Diagnostic displays and fluid-sample ports help speed preventative maintenance and troubleshooting.

Easy filter maintenance

Vertical spin-on engine oil and fuel filters are conveniently located in the right rear compartment for easy ground-level servicing.

Bank on it

Centralized lube banks place zerks within easy reach. They make greasing less messy and time consuming, too.

Take out the trash

Cooler cores' 10-fin-per-in. spacing lets trash easily pass to resist plugging. Swing-out coolers provide additional core access.

Keep it clean

Highly-efficient, heavy-duty cooling system keeps things cool, even in harsh environments or high altitudes. Optional reversing fan back-blows cooler cores to reduce debris buildup.

Fuel savers

Auto-idle automatically reduces speed — now to as low as 800 rpm — when hydraulics aren't in use. Auto-shutdown further preserves precious fuel.

FT4 ash service

Ash-service intervals for the diesel particulate filter (DPF) are condition based, meaning the machine will notify the operator before service is required. Typically, ash service is not necessary until the first engine overhaul depending on machine application and maintenance practices. FT4/Stage IV components are warranted for 10,000 hours.

Refill 'er up

Large fuel tanks and 500- and 5,000-hour engine and hydraulic oil-service intervals decrease downtime for routine maintenance. Fluid-level sight gauges are conveniently located and can be checked at a glance.



Get valuable insight with
JOHN DEERE WORKSIGHT™

John Deere WorkSight is an exclusive suite of telematics solutions that increases uptime while lowering operating costs. At its heart, JDLink™ machine monitoring provides real-time utilization data and alerts to help you maximize productivity and efficiency while minimizing downtime. Remote diagnostics enable your dealer to read codes and record performance data without a trip to the jobsite.

Keep downtime down with
JOHN DEERE ULTIMATE UPTIME

John Deere Ultimate Uptime, featuring John Deere WorkSight, is a customizable support solution available exclusively from your Deere dealer. This flexible offering maximizes equipment availability with standard John Deere WorkSight capabilities that can help prevent future downtime and speed repairs when needed. In addition to the base John Deere WorkSight features, our dealers work with you to build an uptime package that meets the specific needs of your machine, fleet, project, and business, including customized maintenance and repair agreements, onsite parts availability, extended warranties, fluid sampling, response-time guarantees, and more.





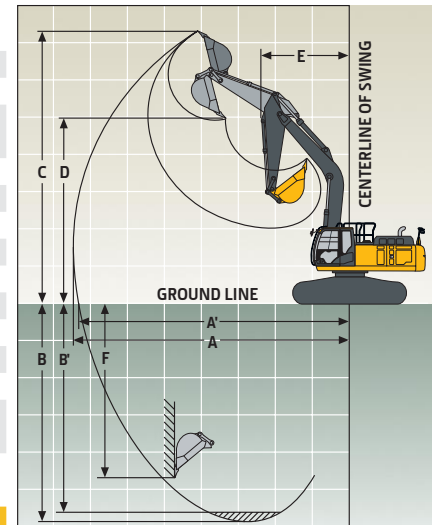
350G LC SPECIFICATIONS

Engine	350G LC		
	Base engine for use in U.S., U.S. Territories, and Canada		
Manufacturer and Model	John Deere PowerTech™ PSS 9.0 L		
Non-Road Emission Standard	EPA Final Tier 4/EU Stage IV		
Net Rated Power (ISO 9249)	202 kW (271 hp) at 1,900 rpm		
Cylinders	6		
Displacement	9.0 L (549 cu. in.)		
Off-Level Capacity	70% (35 deg.)		
Aspiration	Series turbocharged, air-to-air charge-air cooler		
Cooling			
	Cool-on-demand hydraulic-driven, suction-type fan with remote-mounted drive		
Powertrain			
	2-speed propel with automatic shift		
Maximum Travel Speed			
Low	3.2 km/h (2.0 mph)		
High	5.0 km/h (3.1 mph)		
Drawbar Pull	30 350 kg (66,900 lb.)		
Hydraulics			
	Open center, load sensing		
Main Pumps	2 variable-displacement pumps		
Maximum Rated Flow	288 L/m (76.1 gpm) x 2		
Pilot Pump	1 gear		
Maximum Rated Flow	30.2 L/m (8.0 gpm)		
Pressure Setting	3900 kPa (566 psi)		
System Operating Pressure			
Circuits			
Implement	34 300 kPa (4,975 psi)		
Travel	35 500 kPa (5,149 psi)		
Swing	33 300 kPa (4,830 psi)		
Power Boost	38 000 kPa (5,511 psi)		
Controls	Pilot levers, short stroke, low-effort hydraulic pilot controls with shutoff lever		
Cylinders			
	<i>Bore</i>	<i>Rod Diameter</i>	<i>Stroke</i>
Boom (2)	145 mm (5.7 in.)	100 mm (3.9 in.)	1520 mm (59.8 in.)
Arm (1)	170 mm (6.7 in.)	115 mm (4.5 in.)	1740 mm (68.5 in.)
Bucket (1)	140 mm (5.5 in.)	95 mm (3.7 in.)	1250 mm (49.2 in.)
Mass-Excavating (ME) Bucket (1)	145 mm (5.7 in.)	95 mm (3.7 in.)	1250 mm (49.2 in.)
Electrical			
Number of Batteries (12 volt)	2		
Battery Capacity	1,400 CCA		
Alternator Rating	100 amp		
Work Lights	2 halogen (1 mounted on boom, 1 on frame)		
Undercarriage			
Rollers (each side)			
Carrier	2		
Track	8		
Shoes, Triple Semi-Grousers (each side)	48		
Track			
Adjustment	Hydraulic		
Guides	3 per side		
Chain	Sealed and lubricated		
Ground Pressure			
800-mm (32 in.) Triple Semi-Grouser Shoes	50.1 kPa (7.27 psi)		

350G LC SPECIFICATIONS

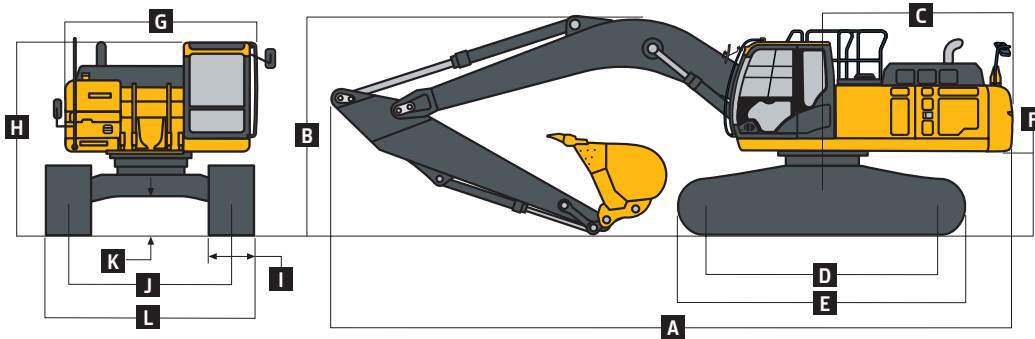


Swing Mechanism		350G LC					
Swing							
Speed	10.7 rpm						
Torque	120 000 Nm (88,500 lb.-ft.)						
Serviceability							
Refill Capacities							
Fuel Tank	628 L (166 gal.)						
Diesel Exhaust Fluid (DEF) Tank	35 L (9.3 gal.)						
Cooling System	39.7 L (10.5 gal.)						
Engine Oil with Filter	27 L (7.2 gal.)						
Hydraulic Tank	193 L (51 gal.)						
Hydraulic System	290 L (77 gal.)						
Swing Drive	11.8 L (12.5 qt.)						
Gearbox							
Propel (each)	8.5 L (9.0 qt.)						
Pump Drive	1.1 L (1.2 qt.)						
Operating Weights							
With full fuel tank; 79-kg (175 lb.) operator; 1.84-m³ (2.41 cu. yd.), 1370-mm (54 in.), 3718-kg (8,197 lb.) bucket; 4.0-m (13 ft. 1 in.) arm; 6917-kg (15,249 lb.) counterweight; and 800-mm (32 in.) triple semi-grouser shoes							
Operating Weight	36 131 kg (79,655 lb.)						
Component Weights							
Undercarriage with 800-mm (32 in.) Triple Semi-Grouser Shoes	12 750 kg (28,100 lb.)						
One-Piece Boom (with arm cylinder)							
6.4 m (21 ft. 0 in.)	3031 kg (6,682 lb.)						
5.7-m (18 ft. 8 in.) ME	3234 kg (7,130 lb.)						
Arm with Bucket Cylinder and Linkage							
2.1 m (6 ft. 10 in.) ME	1821 kg (4,015 lb.)						
2.67 m (8 ft. 9 in.) Heavy-Duty (HD)	1909 kg (4,209 lb.)						
3.2 m (10 ft. 6 in.)	1758 kg (3,876 lb.)						
4.0 m (13 ft. 1 in.)	1898 kg (4,184 lb.)						
Boom-Lift Cylinders (2), Total Weight	624 kg (1,376 lb.)						
1.84-m³ (2.41 cu. yd.), 1370-mm (54 in.) HD Bucket	3718 kg (8,197 lb.)						
Counterweight, Standard	6917 kg (15,249 lb.)						
Operating Dimensions							
Arm Length	2.1 m (6 ft. 10 in.) ME / 5.7-m (18 ft. 8 in.) Boom Length	2.67 m (8 ft. 9 in.) HD / 5.7-m (18 ft. 8 in.) Boom Length	2.67 m (8 ft. 9 in.) HD / 6.4-m (21 ft. 0 in.) Boom Length	3.2 m (10 ft. 6 in.) / 6.4-m (21 ft. 0 in.) Boom Length	4.0 m (13 ft. 1 in.) / 6.4-m (21 ft. 0 in.) Boom Length		
Arm Digging Force							
SAE	275.0 kN (61,822 lb.)	213.0 kN (47,884 lb.)	213.0 kN (47,884 lb.)	177.0 kN (39,791 lb.)	152.6 kN (34,314 lb.)		
ISO	288.0 kN (64,745 lb.)	222.0 kN (49,908 lb.)	222.0 kN (49,908 lb.)	185.0 kN (41,590 lb.)	159.0 kN (35,745 lb.)		
Bucket Digging Force							
SAE	229.0 kN (51,481 lb.)	214.0 kN (48,109 lb.)	214.0 kN (48,109 lb.)	214.0 kN (48,109 lb.)	225.2 kN (50,628 lb.)		
ISO	264.0 kN (59,350 lb.)	246.0 kN (55,303 lb.)	246.0 kN (55,303 lb.)	246.0 kN (55,303 lb.)	246.0 kN (55,303 lb.)		
A Maximum Reach	9.41 m (30 ft. 10 in.)	9.93 m (32 ft. 7 in.)	10.57 m (34 ft. 8 in.)	11.10 m (36 ft. 5 in.)	11.86 m (38 ft. 11 in.)		
A ^l Maximum Reach at Ground Level	9.16 m (30 ft. 1 in.)	9.69 m (31 ft. 9 in.)	10.36 m (34 ft. 0 in.)	10.89 m (35 ft. 9 in.)	11.67 m (38 ft. 3 in.)		
B Maximum Digging Depth	5.62 m (18 ft. 5 in.)	6.22 m (20 ft. 5 in.)	6.84 m (22 ft. 5 in.)	7.38 m (24 ft. 3 in.)	8.18 m (26 ft. 10 in.)		
B ^l Maximum Digging Depth at 2.44-m (8 ft. 0 in.) Flat Bottom	5.39 m (17 ft. 8 in.)	6.02 m (19 ft. 9 in.)	6.64 m (21 ft. 9 in.)	7.21 m (23 ft. 8 in.)	8.04 m (26 ft. 5 in.)		
C Maximum Cutting Height	9.43 m (30 ft. 11 in.)	9.66 m (31 ft. 8 in.)	9.99 m (32 ft. 9 in.)	10.36 m (34 ft. 0 in.)	10.75 m (35 ft. 3 in.)		
D Maximum Dumping Height	6.39 m (21 ft. 0 in.)	6.60 m (21 ft. 8 in.)	6.94 m (22 ft. 9 in.)	7.24 m (23 ft. 9 in.)	7.63 m (25 ft. 0 in.)		
E Minimum Swing Radius	4.04 m (13 ft. 3 in.)	4.05 m (13 ft. 3 in.)	4.61 m (15 ft. 1 in.)	4.46 m (14 ft. 8 in.)	4.47 m (14 ft. 8 in.)		
F Maximum Vertical Wall	4.15 m (13 ft. 7 in.)	4.78 m (15 ft. 8 in.)	5.51 m (18 ft. 1 in.)	6.42 m (21 ft. 1 in.)	7.27 m (23 ft. 10 in.)		



350G LC

Machine Dimensions		350G LC				
Arm Length		2.1 m (6 ft. 10 in.) ME / 5.7-m (18 ft. 8 in.) Boom Length	2.67 m (8 ft. 9 in.) HD / 5.7-m (18 ft. 8 in.) Boom Length	2.67 m (8 ft. 9 in.) HD / 6.4-m (21 ft. 0 in.) Boom Length	3.2 m (10 ft. 6 in.) / 6.4-m (21 ft. 0 in.) Boom Length	4.0 m (13 ft. 1 in.) / 6.4-m (21 ft. 0 in.) Boom Length
A	Overall Length	10.99 m (36 ft. 1 in.)	11.33 m (37 ft. 2 in.)	11.35 m (37 ft. 3 in.)	11.20 m (36 ft. 9 in.)	11.29 m (37 ft. 0 in.)
B	Overall Height	3.68 m (12 ft. 1 in.)	3.47 m (11 ft. 5 in.)	3.47 m (11 ft. 5 in.)	3.27 m (10 ft. 9 in.)	3.60 m (11 ft. 10 in.)
C	Rear-End Length/Swing Radius	3.60 m (11 ft. 10 in.)	3.60 m (11 ft. 10 in.)	3.60 m (11 ft. 10 in.)	3.60 m (11 ft. 10 in.)	3.60 m (11 ft. 10 in.)
D	Distance Between Idler/Sprocket Centerline	4.05 m (13 ft. 3 in.)	4.05 m (13 ft. 3 in.)	4.05 m (13 ft. 3 in.)	4.05 m (13 ft. 3 in.)	4.05 m (13 ft. 3 in.)
E	Undercarriage Length	4.94 m (16 ft. 2 in.)	4.94 m (16 ft. 2 in.)	4.94 m (16 ft. 2 in.)	4.94 m (16 ft. 2 in.)	4.94 m (16 ft. 2 in.)
F	Counterweight Clearance	1.18 m (3 ft. 10 in.)	1.18 m (3 ft. 10 in.)	1.18 m (3 ft. 10 in.)	1.18 m (3 ft. 10 in.)	1.18 m (3 ft. 10 in.)
G	Upperstructure Width	2.99 m (9 ft. 10 in.)	2.99 m (9 ft. 10 in.)	2.99 m (9 ft. 10 in.)	2.99 m (9 ft. 10 in.)	2.99 m (9 ft. 10 in.)
H	Cab Height	3.14 m (10 ft. 4 in.)	3.14 m (10 ft. 4 in.)	3.14 m (10 ft. 4 in.)	3.14 m (10 ft. 4 in.)	3.14 m (10 ft. 4 in.)
I	Track Width with Shoes	600 mm (24 in.) / 700 mm (28 in.) / 800 mm (32 in.)	600 mm (24 in.) / 700 mm (28 in.) / 800 mm (32 in.)	600 mm (24 in.) / 700 mm (28 in.) / 800 mm (32 in.)	600 mm (24 in.) / 700 mm (28 in.) / 800 mm (32 in.)	600 mm (24 in.) / 700 mm (28 in.) / 800 mm (32 in.)
J	Gauge Width	2.59 m (8 ft. 6 in.)	2.59 m (8 ft. 6 in.)	2.59 m (8 ft. 6 in.)	2.59 m (8 ft. 6 in.)	2.59 m (8 ft. 6 in.)
K	Ground Clearance	0.50 m (20 in.)	0.50 m (20 in.)	0.50 m (20 in.)	0.50 m (20 in.)	0.50 m (20 in.)
L	Overall Width with Shoes					
	600 mm (24 in.)	3.19 m (10 ft. 6 in.)	3.19 m (10 ft. 6 in.)	3.19 m (10 ft. 6 in.)	3.19 m (10 ft. 6 in.)	3.19 m (10 ft. 6 in.)
	700 mm (28 in.)	3.29 m (10 ft. 10 in.)	3.29 m (10 ft. 10 in.)	3.29 m (10 ft. 10 in.)	3.29 m (10 ft. 10 in.)	3.29 m (10 ft. 10 in.)
	800 mm (32 in.)	3.39 m (11 ft. 2 in.)	3.39 m (11 ft. 2 in.)	3.39 m (11 ft. 2 in.)	3.39 m (11 ft. 2 in.)	3.39 m (11 ft. 2 in.)



Lift Capacities

Boldface type indicates hydraulically limited capacity; **lightface type** indicates stability-limited capacities, in kg (lb.). All lift capacities are based on ISO 10567 (with power boost). Machine equipped with 800-mm (32 in.) shoes; standard gauge; and situated on firm, uniform supporting surface. Total load includes weight of cables, hook, etc. Figures do not exceed 87 percent of hydraulic capacities or 75 percent of weight needed to tip machine.

LOAD POINT HEIGHT	HORIZONTAL DISTANCE FROM CENTERLINE OF ROTATION											
	1.5 m (5 ft.)		3.0 m (10 ft.)		4.5 m (15 ft.)		6.0 m (20 ft.)		7.5 m (25 ft.)		9.0 m (30 ft.)	
	Over Front	Over Side	Over Front	Over Side	Over Front	Over Side	Over Front	Over Side	Over Front	Over Side	Over Front	Over Side
With 2.1-m (6 ft. 10 in.) ME arm, 5.7-m (18 ft. 8 in.) ME boom, and 1273-kg (2,806 lb.) bucket												
6.0 m (20 ft.)							10 841 (23,900)	8528 (18,800)				
4.5 m (15 ft.)					14 674 (32,350)	13 245 (29,200)	11 635 (25,650)	8187 (18,050)				
3.0 m (10 ft.)							12 859 (28,350)	7756 (17,100)	8981 (19,800)	5330 (11,750)		
1.5 m (5 ft.)							12 701 (28,000)	7371 (16,250)	8800 (19,400)	5194 (11,450)		
Ground Line					19 028 (41,950)	11 249 (24,800)	12 474 (27,500)	7189 (15,850)				
-1.5 m (-5 ft.)			21 818 (48,100)	21 818 (48,100)	17 305 (38,150)	11 317 (24,950)	12 496 (27,550)	7212 (15,900)				
-3.0 m (-10 ft.)			17 463 (38,500)	17 463 (38,500)	13 676 (30,150)	11 657 (25,700)						

Lift Capacities (continued)

350G LC

Boldface type indicates hydraulically limited capacity; lightface type indicates stability-limited capacities, in kg (lb.). All lift capacities are based on ISO 10567 (with power boost). Machine equipped with 800-mm (32 in.) shoes; standard gauge; and situated on firm, uniform supporting surface. Total load includes weight of cables, hook, etc. Figures do not exceed 87 percent of hydraulic capacities or 75 percent of weight needed to tip machine.

LOAD POINT HEIGHT	HORIZONTAL DISTANCE FROM CENTERLINE OF ROTATION											
	1.5 m (5 ft.)		3.0 m (10 ft.)		4.5 m (15 ft.)		6.0 m (20 ft.)		7.5 m (25 ft.)		9.0 m (30 ft.)	
	Over Front	Over Side	Over Front	Over Side	Over Front	Over Side	Over Front	Over Side	Over Front	Over Side	Over Front	Over Side
<i>With 2.67-m (8 ft. 9 in.) HD arm, 5.7-m (18 ft. 8 in.) ME boom, and 1273-kg (2,806 lb.) bucket</i>												
6.0 m (20 ft.)							9888 (21,800)	8732 (19,250)				
4.5 m (15 ft.)					13 404 (29,550)	13 404 (29,550)	10 864 (23,950)	8391 (18,500)	9299 (20,500)	5625 (12,400)		
3.0 m (10 ft.)					16 579 (36,550)	12 565 (27,700)	12 270 (27,050)	7938 (17,500)	9095 (20,050)	5420 (11,950)		
1.5 m (5 ft.)					18 847 (41,550)	11 725 (25,850)	12 859 (28,350)	7507 (16,550)	8868 (19,550)	5239 (11,550)		
Ground Line					19 323 (42,600)	11 362 (25,050)	12 565 (27,700)	7235 (15,950)	8732 (19,250)	5103 (11,250)		
-1.5 m (-5 ft.)			19 686 (43,400)	19 686 (43,400)	18 189 (40,100)	11 340 (25,000)	12 474 (27,500)	7189 (15,850)				
-3.0 m (-10 ft.)			20 752 (45,750)	20 752 (45,750)	15 377 (33,900)	11 544 (25,450)	10 977 (24,200)	7348 (16,200)				
<i>With 2.67-m (8 ft. 9 in.) HD arm, 6.4-m (21 ft. 0 in.) boom, and 1170-kg (2,580 lb.) bucket</i>												
6.0 m (20 ft.)							9496 (20,636)	9213 (19,803)	8705 (19,093)	6162 (13,179)		
4.5 m (15 ft.)					14 206 (30,447)	14 021 (30,255)	10 894 (23,562)	8801 (18,960)	9279 (20,190)	6021 (12,922)		
3.0 m (10 ft.)					17 742 (38,067)	12 827 (27,693)	12 506 (27,011)	8285 (17,857)	9573 (20,571)	5798 (12,462)		
1.5 m (5 ft.)							13 399 (28,794)	7868 (16,949)	9319 (20,037)	5570 (11,982)		
Ground Line					18 814 (42,867)	11 932 (25,647)	13 127 (28,197)	7634 (16,432)	9155 (19,685)	5423 (11,666)		
-1.5 m (-5 ft.)			12 495 (28,545)	12 495 (28,545)	18 754 (40,705)	11 959 (25,693)	13 059 (28,045)	7575 (16,301)	9117 (19,617)	5389 (11,605)		
-3.0 m (-10 ft.)			21 868 (47,544)	21 868 (47,544)	16 665 (36,066)	12 147 (26,109)	12 606 (27,142)	7679 (16,540)				
-4.5 m (-15 ft.)			16 500 (35,354)	16 500 (35,354)	12 776 (27,209)	12 551 (27,027)						
<i>With 2.67-m (8 ft. 9 in.) HD arm, 6.4-m (21 ft. 0 in.) boom, and 1273-kg (2,806 lb.) bucket</i>												
6.0 m (20 ft.)							9117 (20,100)	8596 (18,950)	8482 (18,700)	5693 (12,550)		
4.5 m (15 ft.)					13 449 (29,650)	13 109 (28,900)	10 387 (22,900)	8142 (17,950)	8913 (19,650)	5534 (12,200)		
3.0 m (10 ft.)					16 874 (37,200)	11 884 (26,200)	11 929 (26,300)	7620 (16,800)	8890 (19,600)	5284 (11,650)		
1.5 m (5 ft.)					17 055 (37,600)	11 158 (24,600)	12 474 (27,500)	7212 (15,900)	8641 (19,050)	5058 (11,150)		
Ground Line					19 006 (41,900)	10 932 (24,100)	12 202 (26,900)	6963 (15,350)	8482 (18,700)	4899 (10,800)		
-1.5 m (-5 ft.)			13 177 (29,050)	13 177 (29,050)	18 030 (39,750)	10 954 (24,150)	12 134 (26,750)	6895 (15,200)	8459 (18,650)	4876 (10,750)		
-3.0 m (-10 ft.)			21 001 (46,300)	21 001 (46,300)	15 944 (35,150)	11 158 (24,600)	11 975 (26,400)	7008 (15,450)				
-4.5 m (-15 ft.)			15 490 (34,150)	15 490 (34,150)	11 952 (26,350)	11 612 (25,600)						

Lift Capacities (continued)

350G LC

Boldface type indicates hydraulically limited capacity; lightface type indicates stability-limited capacities, in kg (lb.). All lift capacities are based on ISO 10567 (with power boost). Machine equipped with 800-mm (32 in.) shoes; standard gauge; and situated on firm, uniform supporting surface. Total load includes weight of cables, hook, etc. Figures do not exceed 87 percent of hydraulic capacities or 75 percent of weight needed to tip machine.

LOAD POINT HEIGHT	HORIZONTAL DISTANCE FROM CENTERLINE OF ROTATION											
	1.5 m (5 ft.)		3.0 m (10 ft.)		4.5 m (15 ft.)		6.0 m (20 ft.)		7.5 m (25 ft.)		9.0 m (30 ft.)	
	Over Front	Over Side	Over Front	Over Side	Over Front	Over Side	Over Front	Over Side	Over Front	Over Side	Over Front	Over Side
<i>With 3.2-m (10 ft. 6 in.) arm, 6.4-m (21 ft. 0 in.) boom, and 1170-kg (2,580 lb.) bucket</i>												
6.0 m (20 ft.)									8008 (17,528)	6249 (13,381)		
4.5 m (15 ft.)							10 108 (21,858)	8940 (19,242)	8700 (18,923)	6077 (13,042)	6425	4268
3.0 m (10 ft.)					16 457 (35,331)	13 179 (28,428)	11 834 (25,561)	8402 (18,102)	9604 (20,664)	5832 (12,529)	7003 (15,009)	4180 (8,936)
1.5 m (5 ft.)					19 033 (41,053)	12 300 (26,492)	13 321 (28,796)	7933 (17,084)	9338 (20,070)	5579 (11,995)	6882 (14,768)	4069 (8,714)
Ground Line					19 818 (42,912)	11 930 (25,649)	13 140 (28,219)	7635 (16,430)	9132 (19,628)	5395 (11,598)	6794 (14,592)	3988 (8,553)
-1.5 m (-5 ft.)			11 956 (27,138)	11 956 (27,138)	19 291 (41,824)	11 864 (25,490)	13 002 (27,916)	7516 (16,168)	9042 (19,442)	5314 (11,431)		
-3.0 m (-10 ft.)	14 280 (32,048)	14 280 (32,048)	19 673 (44,674)	19 673 (44,674)	17 649 (38,194)	11 988 (25,762)	13 051 (28,032)	7558 (16,269)	9105 (19,608)	5371 (11,580)		
-4.5 m (-15 ft.)			19 521 (41,956)	19 521 (41,956)	14 491 (31,054)	12 307 (26,481)	10 645 (22,511)	7794 (16,823)				
<i>With 4.0-m (13 ft. 1 in.) arm, 6.4-m (21 ft. 0 in.) boom, and 1170-kg (2,580 lb.) bucket</i>												
7.5 m (25 ft.)									(14,716)	(13,856)		
6.0 m (20 ft.)									7015 (15,348)	6409 (13,734)	5727 (11,021)	4442 (9,453)
4.5 m (15 ft.)									7813 (16,997)	6203 (13,312)	7212 (15,462)	4370 (9,335)
3.0 m (10 ft.)					14 409 (30,952)	13 717 (29,563)	10 708 (23,138)	8612 (18,543)	8838 (19,174)	5923 (12,721)	7070 (15,160)	4234 (9,058)
1.5 m (5 ft.)					17 673 (38,094)	12 624 (27,185)	12 469 (26,955)	8065 (17,362)	9401 (20,198)	8626 (12,090)	6904 (14,815)	4082 (8,741)
Ground Line			6735 (15,416)	6735 (15,416)	19 386 (41,927)	12 004 (25,812)	13 195 (28,331)	7669 (16,500)	9133 (19,623)	5386 (11,573)	6766 (14,526)	3955 (8,476)
-1.5 m (-5 ft.)	6807 (15,227)	6807 (15,227)	10 880 (24,662)	10 880 (24,662)	19 638 (42,536)	11 769 (25,286)	12 949 (27,797)	7458 (16,037)	8974 (19,285)	5244 (11,269)	6692 (14,381)	3887 (8,342)
-3.0 m (-10 ft.)	11 398 (25,572)	11 398 (25,572)	16 291 (36,941)	16 291 (36,941)	18 694 (40,455)	11 779 (25,307)	12 899 (27,693)	7414 (15,947)	8945 (19,236)	5218 (11,226)		
-4.5 m (-15 ft.)	16 873 (38,021)	16 873 (38,021)	23 293 (50,183)	23 293 (50,183)	16 436 (35,373)	11 987 (25,775)	12 165 (26,067)	7536 (16,233)	8817 (18,456)	5356 (11,576)		
-6.0 m (-20 ft.)			16 669 (35,135)	16 669 (35,135)	12 038 (25,239)	12 038 (25,239)	8137	7927				

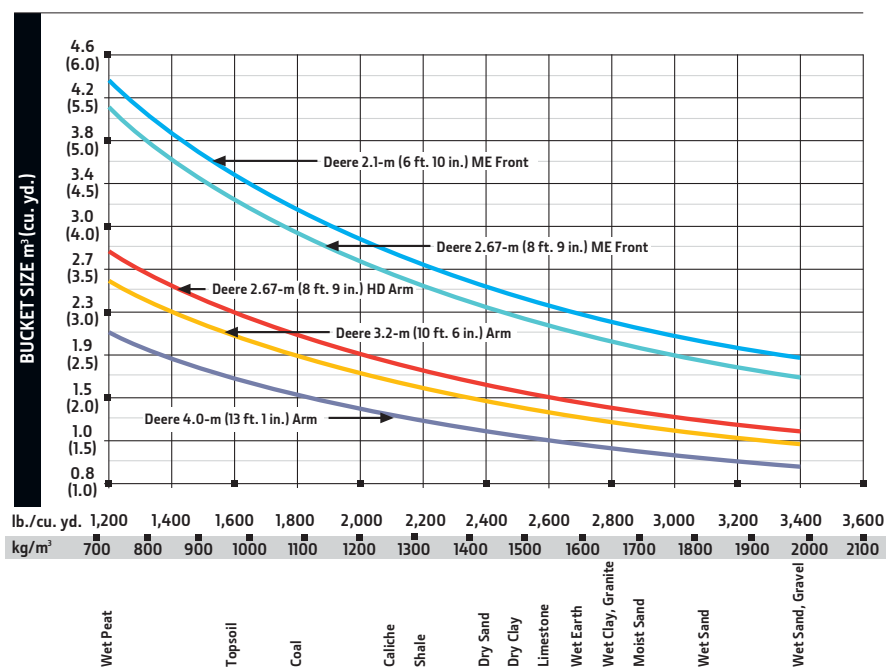
Buckets

350G LC

A full line of buckets is offered to meet a wide variety of applications. Digging forces are with power boost. Buckets are equipped with John Deere Fanggs™ teeth or ESCO teeth standard. Replaceable cutting edges and a variety of teeth are available through John Deere Parts. Optional side cutters add 150 mm (6 in.) to bucket widths. Capacities are SAE heaped ratings.

Type Bucket	Bucket Width		Bucket Capacity		Bucket Weight		Bucket Dig Force		Arm Dig Force, 2.67 m (8 ft. 9 in.) HD		Arm Dig Force, 3.2 m (10 ft. 6 in.)		Arm Dig Force, 4.0 m (13 ft. 1 in.)		Bucket Tip Radius		Number of Teeth
	mm	in.	m ³	cu. yd.	kg	lb.	kN	lb.	kN	lb.	kN	lb.	kN	lb.	mm	in.	
Heavy Duty Plate Lip	914	36	1.13	1.5	971	2,140	225.2	496	204.2	450	177.6	392	152.6	337	1600	63.0	4
	1067	42	1.34	1.7	1003	2,212	225.2	496	204.2	450	177.6	392	152.6	337	1600	63.0	5
	1219	48	1.55	2.0	1055	2,326	225.2	496	204.2	450	177.6	392	152.6	337	1600	63.0	6
	1372	54	1.76	2.3	1161	2,559	225.2	496	204.2	450	177.6	392	152.6	337	1600	63.0	6
Heavy Duty High Capacity	760	30	0.96	1.3	1142	2,518	204.2	450	196.6	433	171.7	379	148.3	327	1765	69.5	4
	914	36	1.19	1.6	1263	2,783	204.2	450	196.6	433	171.7	379	148.3	327	1765	69.5	4
	1067	42	1.41	1.8	1416	3,123	204.2	450	196.6	433	171.7	379	148.3	327	1765	69.5	5
	1219	48	1.64	2.1	1506	3,321	204.2	450	196.6	433	171.7	379	148.3	327	1765	69.5	6
	1372	54	1.87	2.4	1617	3,565	204.2	450	196.6	433	171.7	379	148.3	327	1765	69.5	6

Bucket Selection Guide*



*Contact your John Deere dealer for optimum bucket and attachment selections. These recommendations are for general conditions and average use. Does not include optional equipment such as thumbs or couplers. Larger buckets may be possible when using light materials, for flat and level operations, less compacted materials, and volume loading applications such as mass-excavation applications in ideal conditions. Smaller buckets are recommended for adverse conditions such as off-level applications, rocks, and uneven surfaces. Bucket capacity indicated is SAE heaped.



380G LC SPECIFICATIONS

Engine	380G LC		
	Base engine for use in U.S., U.S. Territories, and Canada		
Manufacturer and Model	John Deere PowerTech™ PSS 9.0 L		
Non-Road Emission Standard	EPA Final Tier 4/EU Stage IV		
Net Rated Power (ISO 9249)	202 kW (271 hp) at 1,900 rpm		
Cylinders	6		
Displacement	9.0 L (549 cu. in.)		
Off-Level Capacity	70% (35 deg.)		
Aspiration	Series turbocharged, air-to-air charge-air cooler		
Cooling			
	Cool-on-demand hydraulic-driven, suction-type fan with remote-mounted drive		
Powertrain			
	2-speed propel with automatic shift		
Maximum Travel Speed			
Low	3.2 km/h (2.0 mph)		
High	5.0 km/h (3.1 mph)		
Drawbar Pull	30 350 kg (66,900 lb.)		
Hydraulics			
	Open center, load sensing		
Main Pumps	2 variable-displacement pumps		
Maximum Rated Flow	288 L/m (76.1 gpm) x 2		
Pilot Pump	1 gear		
Maximum Rated Flow	30.2 L/m (8.0 gpm)		
Pressure Setting	3900 kPa (566 psi)		
System Operating Pressure			
Circuits			
Implement	34 300 kPa (4,975 psi)		
Travel	35 500 kPa (5,149 psi)		
Swing	33 300 kPa (4,830 psi)		
Power Boost	38 000 kPa (5,511 psi)		
Controls	Pilot levers, short stroke, low-effort hydraulic pilot controls with shutoff lever		
Cylinders			
	<i>Bore</i>	<i>Rod Diameter</i>	<i>Stroke</i>
Boom (2)	145 mm (5.7 in.)	100 mm (3.9 in.)	1520 mm (59.8 in.)
Arm (1)	170 mm (6.7 in.)	115 mm (4.5 in.)	1740 mm (68.5 in.)
Bucket (1)	140 mm (5.5 in.)	95 mm (3.7 in.)	1250 mm (49.2 in.)
Electrical			
Number of Batteries (12 volt)	2		
Battery Capacity	1,400 CCA		
Alternator Rating	100 amp		
Work Lights	2 halogen (1 mounted on boom, 1 on frame)		
Undercarriage			
Rollers (each side)			
Carrier	2		
Track	8		
Shoes, Triple Semi-Grousers (each side)	48		
Track			
Adjustment	Hydraulic		
Guides	3 per side		
Chain	Sealed and lubricated		
Ground Pressure			
800-mm (32 in.) Heavy-Duty (HD) Triple Semi-Grouser Shoes	53.5 kPa (7.77 psi)		

380G LC SPECIFICATIONS



Swing Mechanism 380G LC

Swing

Speed	10.7 rpm
Torque	120 000 Nm (88,500 lb.-ft.)

Serviceability

Refill Capacities

Fuel Tank	628 L (166 gal.)
Diesel Exhaust Fluid (DEF) Tank	35 L (9.3 gal.)
Cooling System	39.7 L (10.5 gal.)
Engine Oil with Filter	27 L (7.2 gal.)
Hydraulic Tank	193 L (51 gal.)
Hydraulic System	290 L (77 gal.)
Swing Drive	11.8 L (12.5 qt.)
Gearbox	
Propel (each)	8.5 L (9.0 qt.)
Pump Drive	1.1 L (1.2 qt.)

Operating Weights

With full fuel tank; 79-kg (175 lb.) operator; 1.76-m³ (2.3 cu. yd.), 1370-mm (54 in.), 1160-kg (2,557 lb.) bucket; 4.0-m (13 ft. 1 in.) arm; 7629-kg (16,819 lb.) counterweight; and 800-mm (32 in.) HD triple semi-grouser shoes

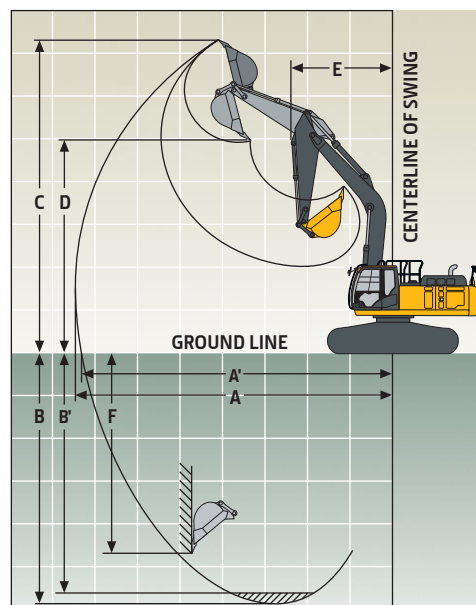
Operating Weight	38 208 kg (84,234 lb.)
------------------	------------------------

Component Weights

Undercarriage, HD, with 800-mm (32 in.) HD Triple Semi-Grouser Shoes	13 550 kg (29,872 lb.)
HD One-Piece Boom (with arm cylinder)	3500 kg (7,806 lb.)
Arm with Bucket Cylinder and Linkage	
3.2 m (10 ft. 6 in.) HD	1957 kg (4,315 lb.)
4.0 m (13 ft. 1 in.)	1898 kg (4,184 lb.)
Boom-Lift Cylinders (2), Total Weight	624 kg (1,376 lb.)
1.76-m ³ (2.3 cu. yd.), 1370-mm (54 in.) HD Bucket	1160 kg (2,557 lb.)
Counterweight, Standard	7629 kg (16,819 lb.)

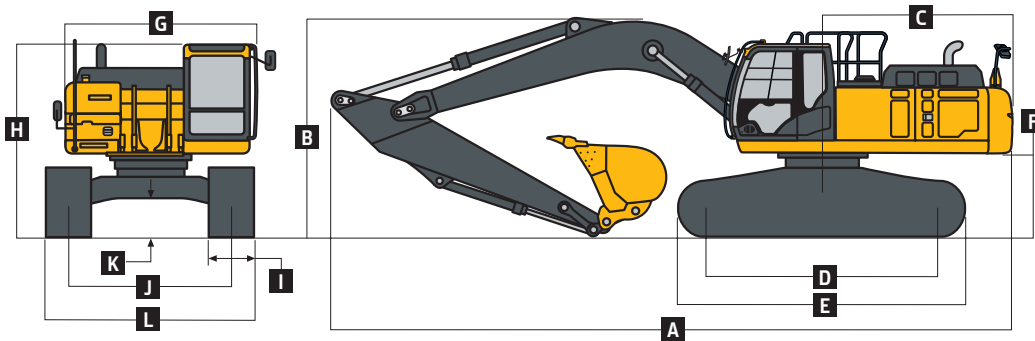
Operating Dimensions

Arm Length	3.2 m (10 ft. 6 in.) HD	4.0 m (13 ft. 1 in.)
Arm Digging Force		
SAE	177.6 kN (39,930 lb.)	152.6 kN (34,314 lb.)
ISO	185.0 kN (41,590 lb.)	159.0 kN (35,745 lb.)
Bucket Digging Force		
SAE	225.2 kN (50,628 lb.)	225.2 kN (50,628 lb.)
ISO	246.0 kN (55,303 lb.)	246.0 kN (55,303 lb.)
A Maximum Reach	11.10 m (36 ft. 5 in.)	11.86 m (38 ft. 11 in.)
A' Maximum Reach at Ground Level	10.89 m (35 ft. 9 in.)	11.67 m (38 ft. 3 in.)
B Maximum Digging Depth	7.38 m (24 ft. 3 in.)	8.18 m (26 ft. 10 in.)
B' Maximum Digging Depth at 2.44-m (8 ft. 0 in.) Flat Bottom	7.21 m (23 ft. 8 in.)	8.04 m (26 ft. 5 in.)
C Maximum Cutting Height	10.36 m (34 ft. 0 in.)	10.75 m (35 ft. 3 in.)
D Maximum Dumping Height	7.24 m (23 ft. 9 in.)	7.63 m (25 ft. 0 in.)
E Minimum Swing Radius	4.46 m (14 ft. 8 in.)	4.47 m (14 ft. 8 in.)
F Maximum Vertical Wall	6.42 m (21 ft. 1 in.)	7.27 m (23 ft. 10 in.)



380G LC

Machine Dimensions		380G LC	
Arm Length		3.2 m (10 ft. 6 in.) HD	4.0 m (13 ft. 1 in.)
A	Overall Length	11.20 m (36 ft. 9 in.)	11.29 m (37 ft. 1 in.)
B	Overall Height	3.27 m (10 ft. 9 in.)	3.60 m (11 ft. 10 in.)
C	Rear-End Length/Swing Radius	3.60 m (11 ft. 10 in.)	3.60 m (11 ft. 10 in.)
D	Distance Between Idler/Sprocket Centerline	4.05 m (13 ft. 3 in.)	4.05 m (13 ft. 3 in.)
E	Undercarriage Length	4.94 m (16 ft. 2 in.)	4.94 m (16 ft. 2 in.)
F	Counterweight Clearance	1.18 m (3 ft. 10 in.)	1.18 m (3 ft. 10 in.)
G	Upperstructure Width	2.99 m (9 ft. 10 in.)	2.99 m (9 ft. 10 in.)
H	Cab Height	3.17 m (10 ft. 5 in.)	3.17 m (10 ft. 5 in.)
I	Track Width	700 mm (28 in.) HD / 800 mm (32 in.) HD	700 mm (28 in.) HD / 800 mm (32 in.) HD
J	Gauge Width	2.59 m (8 ft. 6 in.)	2.59 m (8 ft. 6 in.)
K	Ground Clearance	0.50 m (20 in.)	0.50 m (20 in.)
L	Overall Width with Shoes		
	700 mm (28 in.) HD	3.29 m (10 ft. 10 in.)	3.29 m (10 ft. 10 in.)
	800 mm (32 in.) HD	3.39 m (11 ft. 2 in.)	3.39 m (11 ft. 2 in.)



Lift Capacities

Boldface type indicates hydraulically limited capacity; lightface type indicates stability-limited capacities, in kg (lb.). All lift capacities are based on ISO 10567 (with power boost). Machine equipped with 1270-kg (2,800 lb.) bucket and 800-mm (32 in.) HD shoes; standard gauge; and situated on firm, uniform supporting surface. Total load includes weight of cables, hook, etc. Figures do not exceed 87 percent of hydraulic capacities or 75 percent of weight needed to tip machine.

LOAD POINT HEIGHT	HORIZONTAL DISTANCE FROM CENTERLINE OF ROTATION											
	1.5 m (5 ft.)		3.0 m (10 ft.)		4.5 m (15 ft.)		6.0 m (20 ft.)		7.5 m (25 ft.)		9.0 m (30 ft.)	
	Over Front	Over Side	Over Front	Over Side	Over Front	Over Side	Over Front	Over Side	Over Front	Over Side	Over Front	Over Side
<i>With 3.2-m (10 ft. 6 in.) HD arm</i>												
6.0 m (20 ft.)									7806	6710		
									(17,082)	(14,371)		
4.5 m (15 ft.)							9878	9578	8475	6515	6368	4579
							(21,357)	(20,618)	(18,430)	(13,985)		
3.0 m (10 ft.)					16 096	14 063	11 549	8981	9351	6241	7495	4479
					(34,555)	(30,342)	(24,944)	(19,352)	(20,278)	(13,410)	(16,066)	(9,578)
1.5 m (5 ft.)					18 594	13 091	12 991	8462	9974	5961	7360	4356
					(40,102)	(28,200)	(28,079)	(18,225)	(21,440)	(12,817)	(15,795)	(9,329)
Ground Line					19 348	12 683	13 792	8133	9747	5757	7262	4266
					(41,891)	(27,271)	(29,848)	(17,503)	(20,953)	(12,380)	(15,602)	(9,152)
-1.5 m (-5 ft.)			11 896	11 896	18 817	12 614	13 787	8003	9650	5670		
			(27,023)	(27,023)	(40,794)	(27,102)	(29,755)	(17,218)	(20,751)	(12,198)		
-3.0 m (-10 ft.)	14 227	14 227	19 619	19 619	17 190	12 755	12 828	8053	9604	5735		
	(31,928)	(31,928)	(44,624)	(44,624)	(37,195)	(27,413)	(27,670)	(17,335)	(20,489)	(12,369)		
-4.5 m (-15 ft.)			18 938	18 938	14 064	13 113	10 310	8318				
			(40,693)	(40,693)	(30,129)	(28,219)	(21,788)	(17,958)				

Lift Capacities (continued)**380G LC**

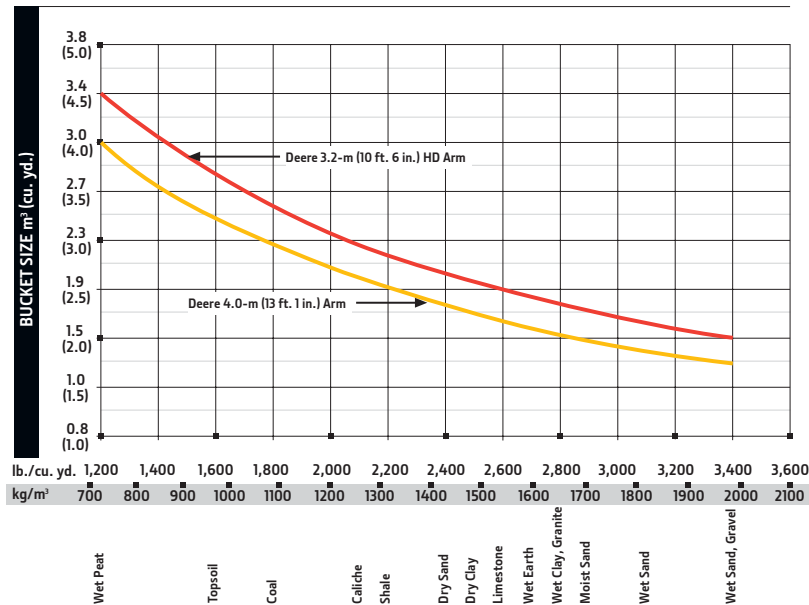
Boldface type indicates hydraulically limited capacity; lightface type indicates stability-limited capacities, in kg (lb.). All lift capacities are based on ISO 10567 (with power boost). Machine equipped with 1270-kg (2,800 lb.) bucket and 800-mm (32 in.) HD shoes; standard gauge; and situated on firm, uniform supporting surface. Total load includes weight of cables, hook, etc. Figures do not exceed 87 percent of hydraulic capacities or 75 percent of weight needed to tip machine.

LOAD POINT HEIGHT	HORIZONTAL DISTANCE FROM CENTERLINE OF ROTATION											
	1.5 m (5 ft.)		3.0 m (10 ft.)		4.5 m (15 ft.)		6.0 m (20 ft.)		7.5 m (25 ft.)		9.0 m (30 ft.)	
	Over Front	Over Side	Over Front	Over Side	Over Front	Over Side	Over Front	Over Side	Over Front	Over Side	Over Front	Over Side
With 4.0-m (13 ft. 1 in.) arm												
7.5 m (25 ft.)									(14,562)	(14,562)		
6.0 m (20 ft.)									6939 (15,179)	6939 (14,954)	5716 (11,000)	4868 (10,368)
4.5 m (15 ft.)									7721 (16,795)	6752 (14,497)	7114 (15,557)	4789 (10,238)
3.0 m (10 ft.)					14 260 (30,632)	14 260 (30,632)	10 586 (22,873)	9333 (20,101)	8725 (18,928)	6451 (13,862)	7629 (16,451)	4642 (9,938)
1.5 m (5 ft.)					17 458 (37,630)	13 633 (29,362)	12 311 (26,612)	8747 (18,836)	9704 (21,034)	6133 (13,184)	7490 (16,079)	4478 (9,597)
Ground Line			6730 (15,403)	6730 (15,403)	19 133 (41,379)	12 967 (27,888)	13 503 (29,220)	8322 (17,910)	9874 (21,222)	5875 (12,630)	7341 (15,767)	4342 (9,311)
-1.5 m (-5 ft.)	6799 (15,210)	6799 (15,210)	10 863 (24,660)	10 863 (24,660)	19 370 (41,953)	12 713 (27,321)	13 946 (29,966)	8095 (17,412)	9704 (20,858)	5722 (12,303)	7261 (15,610)	4268 (9,166)
-3.0 m (-10 ft.)	11 387 (25,561)	11 387 (25,561)	16 293 (36,911)	16 293 (36,911)	18 425 (39,871)	12 723 (27,341)	13 529 (29,232)	8047 (17,314)	9672 (20,804)	5694 (12,255)		
-4.5 m (-15 ft.)	16 888 (37,963)	16 888 (37,963)	22 921 (49,377)	22 921 (49,377)	16 178 (34,814)	12 944 (27,840)	11 969 (25,643)	8177 (17,618)	8663 (18,124)	5840 (12,627)		
-6.0 m (-20 ft.)			16 336 (34,418)	16 336 (34,418)	11 807 (24,741)	11 807 (24,741)	7965 (17,618)	7965 (17,618)				

Buckets

A full line of buckets is offered to meet a wide variety of applications. Digging forces are with power boost. Buckets are equipped with John Deere Fanggs™ teeth or ESCO teeth standard. Replaceable cutting edges and a variety of teeth are available through John Deere Parts. Optional side cutters add 150 mm (6 in.) to bucket widths. Capacities are SAE heaped ratings.

Type Bucket	Bucket Width		Bucket Capacity		Bucket Weight		Bucket Dig Force		Arm Dig Force 3.2 m (10 ft. 6 in.) HD		Arm Dig Force 4.0 m (13 ft. 1 in.)		Bucket Tip Radius		Number of Teeth
	mm	in.	m ³	cu. yd.	kg	lb.	kN	lb.	kN	lb.	kN	lb.	mm	in.	
Heavy Duty Plate Lip	914	36	1.13	1.5	971	2,140	225.2	496	177.6	392	152.6	337	1600	63.0	4
	1067	42	1.34	1.7	1003	2,212	225.2	496	177.6	392	152.6	337	1600	63.0	5
	1219	48	1.55	2.0	1055	2,326	225.2	496	177.6	392	152.6	337	1600	63.0	6
	1372	54	1.76	2.3	1161	2,559	225.2	496	177.6	392	152.6	337	1600	63.0	6
Heavy Duty High Capacity	760	30	0.96	1.3	1142	2,518	204.2	450	171.7	379	148.3	327	1765	69.5	4
	914	36	1.19	1.6	1263	2,783	204.2	450	171.7	379	148.3	327	1765	69.5	4
	1067	42	1.41	1.8	1416	3,123	204.2	450	171.7	379	148.3	327	1765	69.5	5
	1219	48	1.64	2.1	1506	3,321	204.2	450	171.7	379	148.3	327	1765	69.5	6
	1372	54	1.87	2.4	1617	3,565	204.2	450	171.7	379	148.3	327	1765	69.5	6

Bucket Selection Guide*

*Contact your John Deere dealer for optimum bucket and attachment selections. These recommendations are for general conditions and average use. Does not include optional equipment such as thumbs or couplers. Larger buckets may be possible when using light materials, for flat and level operations, less compacted materials, and volume loading applications such as mass-excavation applications in ideal conditions. Smaller buckets are recommended for adverse conditions such as off-level applications, rocks, and uneven surfaces. Bucket capacity indicated is SAE heaped.

Additional equipment

Key: ● Standard ▲ Optional or special

See your John Deere dealer for further information.

350G	380G	Engine
●	●	Auto-idle system
●	●	Automatic belt-tension device
●	●	Batteries (2 – 12 volt)
●	●	Coolant recovery tank
●	●	Dual-element dry-type air filter
●	●	Electronic engine control
●	●	Enclosed fan guard (conforms to SAE J1308)
●	●	Engine coolant to –37 deg. C (–34 deg. F)
●	●	Programmable auto shutdown
●	●	Fuel filter with water separator
●	●	Fuel shutoff valve
●	●	Full-flow oil filter
●	●	Turbocharger with charge air cooler
●	●	Cool-on-demand hydraulic-driven fan
●	●	500-hour engine-oil-change interval
●	●	70% (35 deg.) off-level capability
●	●	Engine-oil-sampling valve
▲	▲	Chrome exhaust stack
▲	▲	Electric ether starting aid
▲	▲	Hydraulic fan reverser
▲	▲	Engine coolant heater
▲	▲	Engine air precleaner
▲	▲	Severe-duty fuel filter
Hydraulic System		
●	●	Reduced-drift valve for boom down, arm in
●	●	Auxiliary hydraulic valve section
●	●	Spring-applied, hydraulically released automatic swing brake
●	●	Auxiliary hydraulic-flow adjustments through monitor
●	●	Auto power lift
●	●	5,000-hour hydraulic-oil-change interval
●	●	Hydraulic-oil-sampling valve
●	●	Control pattern change valve
●	●	Powerwise Plus™ hydraulic-management system
▲	▲	Auxiliary hydraulics with combination piping
▲	▲	Auxiliary pilot and electric controls
▲	▲	Hydraulic filter restriction indicator kit
▲	▲	Load-lowering control / Anti-drift device
▲	▲	Single-pedal propel control
Undercarriage		
●	●	Planetary drive with axial piston motors
●	●	Propel motor shields
●	●	Spring-applied, hydraulically released automatic propel brake
●	●	Track guides, front idler and 3 additional
●	●	2-speed propel with automatic shift
●	●	Upper carrier rollers (2)
●	●	Sealed and lubricated track chain
●	●	Heavy-duty undercover
●	●	Triple semi-grouser shoes, 600 mm (24 in.)
●	●	Triple semi-grouser shoes, 700 mm (28 in.)

350G	380G	Undercarriage (continued)
●	●	Single-bar shoes, 700 mm (28 in.) Heavy Duty (HD)
●		Triple semi-grouser shoes, 800 mm (32 in.)
	●	Triple semi-grouser shoes, 800 mm (32 in.) HD
▲	▲	Undercarriage frame opening guard
Upperstructure		
●	●	Right-hand, left-hand, and counterweight mirrors
●	●	Vandal locks with ignition key: Cab door / Service doors / Toolbox
●	●	Debris screen in side panel
●	●	Remote-mounted engine oil and fuel filters
▲	▲	"D" channel guard
Front Attachments		
●	●	Centralized lubrication system
●	●	Dirt seals on all bucket pins
●	●	Less boom and arm
●	●	Oil-impregnated bushings
●	●	Reinforced resin thrust plates
●	●	Tungsten carbide thermal coating on arm-to-bucket joint
▲		Arm, 2.67 m (8 ft. 9 in.)
▲		Arm, 3.2 m (10 ft. 6 in.)
	▲	Arm, 3.2 m (10 ft. 6 in.) HD
▲	▲	Arm, 4.0 m (13 ft. 1 in.)
▲	▲	Attachment quick-couplers
▲	▲	Boom cylinder with plumbing to mainframe for less boom and arm
▲	▲	Buckets: Heavy duty / Heavy-duty high capacity / Side cutters and teeth
▲	▲	Material clamps
▲	▲	Super-long fronts
Operator's Station		
●	●	Adjustable independent-control positions (levers-to-seat, seat-to-pedals)
●	●	AM/FM radio
●	●	Auto climate control/air conditioner/heater/pressurizer
●	●	Built-in Operator's Manual storage compartment and manual
●	●	Cell-phone power outlet, 12 volt, 60 watt, 5 amp
●	●	Coat hook
●	●	Deluxe suspension cloth seat with 100-mm (4 in.) adjustable armrests
●	●	Floor mat
●	●	Front windshield wiper with intermittent speeds
●	●	Gauges (illuminated): Diesel Exhaust Fluid (DEF) / Engine coolant / Fuel
●	●	Horn, electric
●	●	Hour meter, electric
●	●	Hydraulic shutoff lever, all controls
●	●	Hydraulic warm-up control

350G	380G	Operator's Station (continued)
●	●	Interior light
●	●	Large cup holder
●	●	Machine Information Center (MIC)
●	●	Mode selectors (illuminated): Power modes (3) / Travel modes (2 with automatic shift) / Work mode (1)
●	●	Multifunction, color LCD monitor with: Diagnostic capability / Multiple-language capabilities / Maintenance tracking / Clock / System monitoring with alarm features: Auto-idle indicator, engine air cleaner restriction indicator light, engine check, engine coolant temperature indicator light with audible alarm, engine oil pressure indicator light with audible alarm, low-alternator-charge indicator light, low-fuel indicator light, low DEF indication with audible alarm, fault code alert indicator, fuel-rate display, wiper-mode indicator, work-lights-on indicator, and work-mode indicator
●	●	Motion alarm with cancel switch (conforms to SAE J994)
●	●	Power-boost switch on right console lever
●	●	Auxiliary hydraulic control switches in right console lever
●	●	SAE 2-lever control pattern
●	●	Seat belt, 76 mm (3 in.), non-retractable
●	●	Tinted glass
●	●	Transparent tinted overhead hatch
●	●	Hot/cold beverage compartment
●	●	USB charging port
▲	▲	Air-suspension heated seat
▲	▲	Hydraulic oil filter restriction indicator light
▲	▲	Premium thermally heated and actively cooled leather seat
▲	▲	Protection screens for cab front, rear, and side
▲	▲	Window vandal-protection covers
Electrical		
●	●	100-amp alternator
●	●	Blade-type multi-fused circuits
●	●	Positive-terminal battery covers
●	●	JDLink™ wireless communication system (available in specific countries; see your dealer for details)
●	●	Rearview camera
▲	▲	Cab extension wiring harness
Lights		
●	●	Work lights: Halogen / 1 mounted on boom / 1 mounted on frame
▲	▲	2 lights mounted on cab / 1 mounted on right side of boom / 1 mounted under engine hood
▲	▲	LED light kit

Net engine power is with standard equipment including air cleaner, exhaust system, alternator, and cooling fan, at test conditions specified per ISO 9249. No derating is required up to 3050-m (10,000 ft.) altitude. Specifications and design subject to change without notice. Wherever applicable, specifications are in accordance with SAE standards. Except where otherwise noted, these specifications are based on units with 1370-mm (54 in.) buckets, full fuel tanks, and 79-kg (175 lb.) operators; a 350G LC unit with 6917-kg (15,249 lb.) counterweight and 800-mm (32 in.) triple semi-grouser shoes; and a 380G LC unit with 7629-kg (16,819 lb.) counterweight and 800-mm (32 in.) heavy-duty triple semi-grouser shoes.

