

Specifications R235LCR-9A

ENGINE

MODEL	CUMMINS QSB6.7	
Type	Water cooled, 4 cycle Diesel, 6-Cylinders in line, direct injection, turbocharged, charged air cooled and low emission	
Rated flywheel horse power		
SAE	J1995 (gross)	167 HP (124 kW) / 1,950 rpm
	J1349 (net)	157 HP (117 kW) / 1,950 rpm
DIN	6271/1 (gross)	169 PS (124 kW) / 1,950 rpm
	6271/1 (net)	159 PS (117 kW) / 1,950 rpm
Max. torque	74.7 kgf.m (540 lbf.ft) / 1,500 rpm	
Bore x stroke	107 mm x 124 mm (4.2" x 4.9")	
Piston displacement	6,700 cc (409 in ³)	
Batteries	2 x 12 V x 100 AH	
Starting motor	24 V, 4.8 kW	
Alternator	24 V, 95 Amp	

* This engine meets the EPA (Tier 4 interim) / EU (Stage III-B) Emission regulation.

HYDRAULIC SYSTEM

MAIN PUMP	
Type	Variable displacement tandem-axis piston pumps
Max. flow	2 x 228.2 l/min (60.3 US gpm/50.2 UK gpm)
Sub-pump for pilot circuit	Gear pump

Cross-sensing and fuel saving pump system

HYDRAULIC MOTORS

Travel	Two-speed axial piston motor with brake valve and parking brake
Swing	Axial piston motor with automatic brake

RELIEF VALVE SETTING

Implement circuits	350 kgf/cm ² (4,980 psi)
Travel	350 kgf/cm ² (4,980 psi)
Power boost (boom, arm, bucket)	380 kgf/cm ² (5,410 psi)
Swing circuit	285 kgf/cm ² (4,050 psi)
Pilot circuit	40 kgf/cm ² (570 psi)
Service valve	Installed

HYDRAULIC CYLINDERS

No. of cylinder-bore x stroke	Boom: 2-120 x 1,290 mm (4.7" x 50.8")
	Arm: 1-140 x 1,510 mm (5.5" x 59.4")
	Bucket: 1-120 x 1,055 mm (4.7" x 41.5")

DRIVES & BRAKES

Drive method	Fully hydrostatic type
Drive motor	Axial piston motor, in-shoe design
Reduction system	Planetary reduction gear
Max. drawbar pull	21,400 kgf (47,180 lbf)
Max. travel speed (high) / (low)	5.8 km/h (3.6mph) / 3.4 km/h (2.1mph)
Gradeability	30° (58 %)
Parking brake	Multi wet disc

CONTROL

Pilot pressure operated joysticks and pedals with detachable lever provide almost effortless and fatigueless operation.

Pilot control	Two joysticks with one safety lever (LH): Swing and arm (RH): Boom and bucket (ISO)
Traveling and steering	Two levers with pedals
Engine throttle	Electric, Dial type

SWING SYSTEM

Swing motor	Fixed displacement axial piston motor
Swing reduction	Planetary gear reduction
Swing bearing lubrication	Grease-bathed
Swing brake	Multi wet disc
Swing speed	10.7 rpm

COOLANT & LUBRICANT CAPACITY

	liter	US gal	UK gal
Refilling			
Fuel tank	320	84.5	70.4
Engine coolant	38	10	8.4
Engine oil	23.7	6.3	5.2
Swing device	6.2	1.6	1.4
Final drive (each)	6	1.6	1.3
Hydraulic system (including tank)	275	72.6	60.5
Hydraulic tank	160	42.3	35.2

UNDERCARRIAGE

The X-leg type center frame is integrally welded with reinforced box-section track frames. The undercarriage includes lubricated rollers, idlers, track adjusters with shock absorbing springs and sprockets, and a track chain with double or triple grouser shoes.

Center frame	X - leg type
Track frame	Pentagonal box type
No. of shoes on each side	49 EA
No. of carrier rollers on each side	2 EA
No. of track rollers on each side	9 EA
No. of rail guards on each side	2 EA

OPERATING WEIGHT (APPROXIMATE)

Operating weight, including 5,680 mm (18' 8") boom, 2,920 mm (9' 7") arm, SAE heaped 0.80 m³ (1.05 yd³) bucket, lubricant, coolant, full fuel tank, full hydraulic tank and all standard equipments.

MAJOR COMPONENT WEIGHT

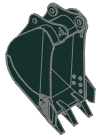
Upperstructure	5,600 kg (12,350 lb)
Boom (with arm cylinder)	1,950 kg (4,300 lb)
Arm (with bucket cylinder)	1,095 kg (2,410 lb)

OPERATING WEIGHT

Shoes	Operating weight		Ground pressure	
	Type	Width mm (in)		kg (lb)
Triple grouser		600 (24")	23,800 (52,470)	0.51 (7.25)
		700 (28")	24,060 (53,040)	0.44 (6.26)
		800 (32")	24,320 (53,620)	0.39 (5.55)
		900 (36")	24,580 (54,190)	0.35 (4.98)

BUCKETS R235LCR-9A

All buckets are welded with high-strength steel.



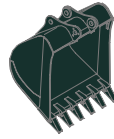
0.51 (0.67)



0.80 (1.05)
0.87 (1.14)
0.92 (1.20)



1.10 (1.44)
1.20 (1.57)



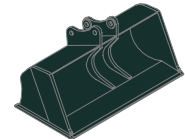
1.34 (1.75)



◆ 0.74 (0.97)
◆ 0.90 (1.18)
◆ 1.05 (1.37)



● 0.87 (1.14)



■ 0.75 (0.98)

SAE heaped m³ (yd³)

Capacity m ³ (yd ³)		Width mm (in)		Weight kg (lb)	Recommendation m (ft.in)		
SAE heaped	CECE heaped	Without side cutters	With side cutters		5.68 (18' 8") Boom		
					2.0 (6' 7") Arm	2.4 (7' 10") Arm	2.92 (9' 7") Arm
0.51 (0.67)	0.45 (0.59)	700 (27.6)	820 (32.3)	570 (1,260)	●	●	●
0.80 (1.05)	0.70 (0.92)	1,000 (39.4)	1,120 (44.1)	700 (1,540)	●	●	●
0.87 (1.14)	0.75 (0.98)	1,090 (42.9)	1,210 (47.6)	740 (1,630)	●	●	■
0.92 (1.20)	0.80 (1.05)	1,150 (45.3)	1,270 (50.0)	770 (1,700)	●	●	■
1.10 (1.44)	0.96 (1.26)	1,320 (52.0)	1,440 (56.7)	830 (1,830)	●	■	▲
1.20 (1.57)	1.00 (1.31)	1,400 (55.1)	1,520 (59.8)	850 (1,870)	■	▲	—
1.34 (1.75)	1.15 (1.50)	1,550 (61.0)	1,670 (65.7)	920 (2,030)	▲	▲	—
◆ 0.74 (0.97)	0.65 (0.85)	985 (38.8)	-	770 (1,700)	●	●	●
◆ 0.90 (1.18)	0.80 (1.05)	1,070 (42.1)	-	810 (1,790)	●	●	■
◆ 1.05 (1.37)	0.92 (1.20)	1,290 (50.8)	-	890 (1,960)	●	■	▲
● 0.87 (1.14)	0.75 (0.98)	1,140 (44.9)	-	900 (1,980)	●	●	■
■ 0.75 (0.98)	0.65 (0.85)	1,790 (70.5)	-	880 (1,940)	●	●	■

◆ Heavy-duty bucket

■ Slope finishing bucket

● Heavy-duty Rock-bucket

● : Applicable for materials with density of 2,000 kg/m³ (3,370 lb/yd³) or less

■ : Applicable for materials with density of 1,600 kg/m³ (2,700 lb/yd³) or less

▲ : Applicable for materials with density of 1,100 kg/m³ (1,850 lb/yd³) or less

ATTACHMENT R235LCR-9A

Booms and arms are welded, a low-stress, full-box section design.

5.68 m (18' 8") boom and 2.0 m (6' 7"); 2.4 m (7' 10") & 2.92 m (9' 7") Arms are available.

DIGGING FORCE R235LCR-9A

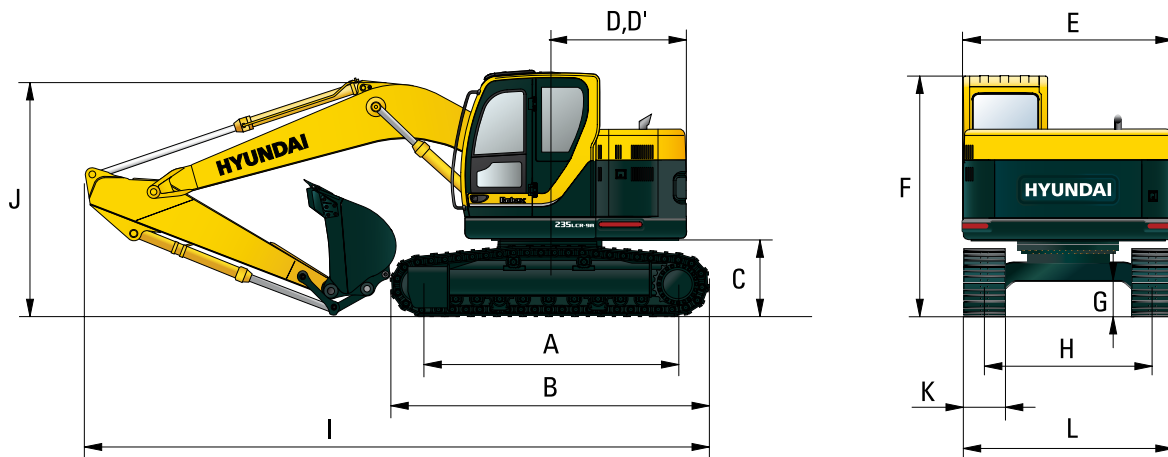
Boom	Length	mm (ft.in)	5,680 (18' 8")			Remarks
	Weight	kg (lb)	1,950 (4,300)			
Arm	Length	mm (ft.in)	2,000 (6' 7")	2,400 (7' 10")	2,920 (9' 7")	Power Boost
	Weight	kg (lb)	975 (2,150)	1,045 (2,300)	1,095 (2,410)	
Bucket digging force	SAE	kN	133.4 [144.8]	133.4 [144.8]	133.4 [144.8]	[]: Power Boost
		kgf	13600 [14770]	13600 [14770]	13600 [14770]	
		lbf	29980 [32550]	29980 [32550]	29980 [32550]	
	ISO	kN	152.0 [165.0]	152.0 [165.0]	152.0 [165.0]	
		kgf	15500 [16830]	15500 [16830]	15500 [16830]	
		lbf	34170 [37100]	34170 [37100]	34170 [37100]	
Arm crowd force	SAE	kN	144.2 [156.5]	119.6 [129.9]	102.0 [110.7]	[]: Power Boost
		kgf	14700 [15960]	12200 [13250]	10400 [11290]	
		lbf	32410 [35190]	26900 [29210]	22930 [24900]	
	ISO	kN	151.0 [164.0]	125.5 [136.3]	106.9 [116.1]	
		kgf	15400 [16720]	12800 [13900]	10900 [11830]	
		lbf	33950 [36860]	28220 [30640]	24030 [26090]	

Note: Boom weight includes arm cylinder, piping and pin

Arm weight includes bucket cylinder, linkage and pin

Dimensions & Working Ranges

DIMENSIONS R235LCR-9A



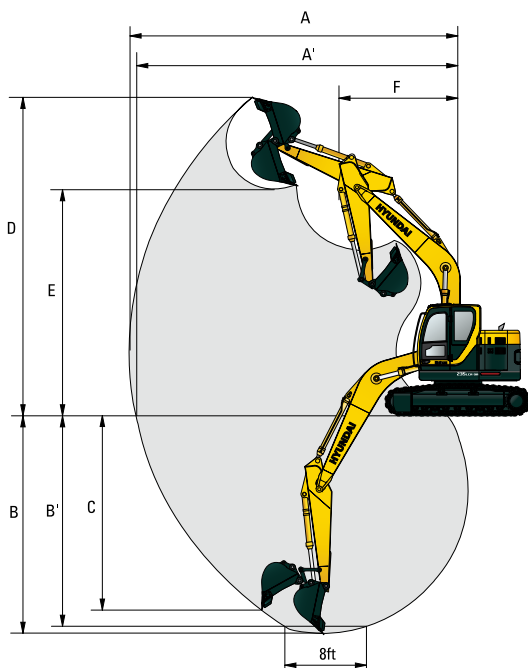
mm (ft · in)

mm (ft · in)

A Tumbler distance	3,650 (11' 12")	Boom length	5,680 (18' 8")			
B Overall length of crawler	4,440 (14' 7")	Arm length	2,000 (6' 7")	2,400 (7' 10")	2,920 (9' 7")	
C Ground clearance of counterweight	1,060 (3' 6")	I Overall length	9,040 (29' 8")	8,950 (29' 4")	8,910 (29' 3")	
D Tail swing radius	1,780 (6' 04")	J Overall height of boom	3,200 (10' 6")	3,100 (10' 2")	3,020 (9' 11")	
D' Rear-end length	1,780 (6' 04")	K Track shoe width	600 (24")	700 (28")	800 (32")	900 (36")
E Overall width of upperstructure	2,980 (9' 9")	L Overall width	2,990 (9' 10")	3,090 (10' 2")	3,190 (10' 6")	3,290 (10' 10")
F Overall height of cab	2,950 (9' 8")					
G Min. ground clearance	480 (1' 7")					
H Track gauge	2,390 (7' 10")					

WORKING RANGES R235LCR-9A

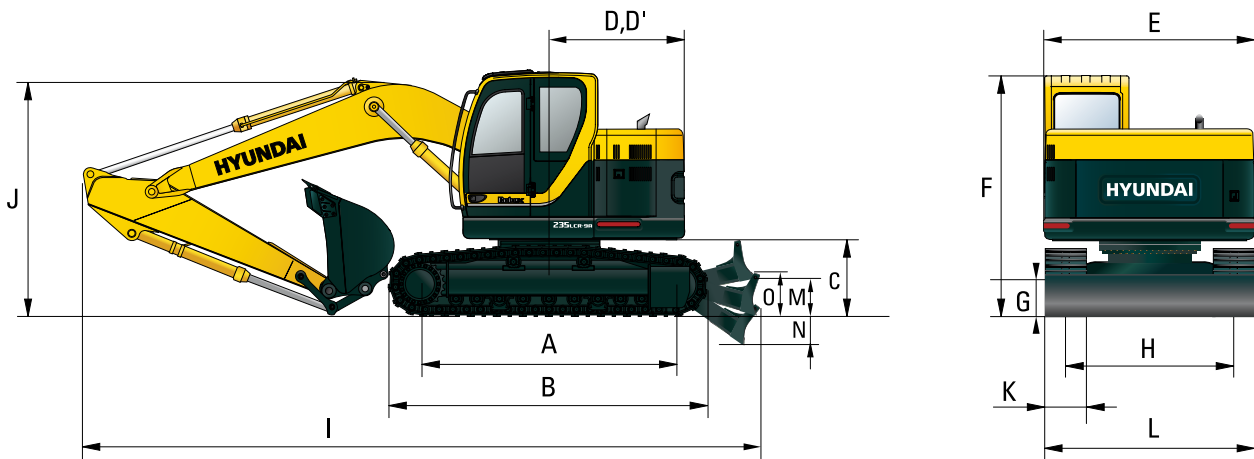
mm (ft · in)



Boom length	5,680 (18' 8")		
Arm length	2,000 (6' 7")	2,400 (7' 10")	2,920 (9' 7")
A Max. digging reach	9,040 (29' 8")	9,430 (30' 11")	9,910 (32' 6")
A' Max. digging reach on ground	8,860 (29' 1")	9,260 (30' 5")	9,750 (31' 12")
B Max. digging depth	5,780 (18' 12")	6,180 (20' 3")	6,700 (21' 12")
B' Max. digging depth (8' level)	5,550 (18' 3")	5,980 (19' 7")	6,530 (21' 5")
C Max. vertical wall digging depth	5,140 (16' 10")	5,710 (18' 9")	6,270 (20' 7")
D Max. digging height	10,090 (33' 1")	10,420 (34' 2")	10,830 (35' 6")
E Max. dumping height	7,190 (23' 7")	7,510 (24' 8")	7,890 (25' 11")
F Min. front swing radius	2,860 (9' 5")	2,550 (8' 4")	2,350 (7' 9")

Dimensions & Working Ranges

DIMENSIONS R235LCR-9A (DOZER TYPE)



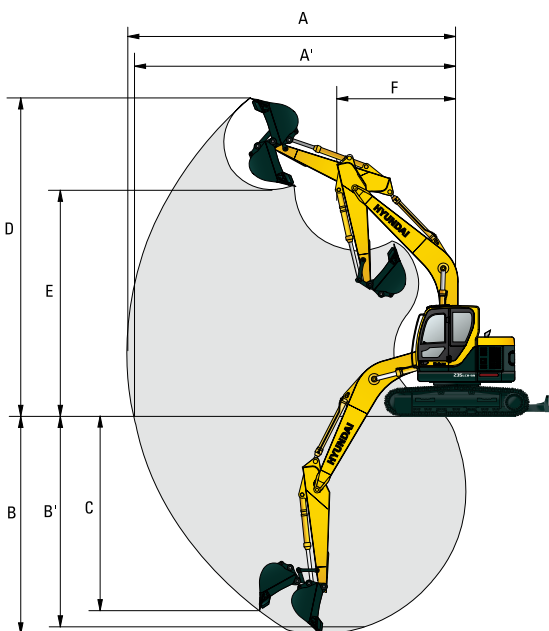
mm (ft · in)

mm (ft · in)

A Tumbler distance	3,650 (11' 12")	Boom length	5,680 (18' 8")			
B Overall length of crawler	4,440 (14' 7")	Arm length	2,000 (6' 7")	2,400 (7' 10")	2,920 (9' 7")	
C Ground clearance of counterweight	1,060 (3' 6")	I Overall length	10,020 (32' 10")	9,930 (32' 7")	9,890 (32' 5")	
D Tail swing radius	1,780 (6' 04")	J Overall height of boom	3,200 (10' 6")	3,100 (10' 2")	3,020 (9' 11")	
D' Rear-end length	1,780 (6' 04")	K Track shoe width	600 (24")	700 (28")	800 (32")	900 (36")
E Overall width of upperstructure	2,980 (9' 9")	L Overall width	2,990 (9' 10")	3,090 (10' 2")	3,190 (10' 6")	3,290 (10' 10")
F Overall height of cab	2,950 (9' 8")					
G Min. ground clearance	480 (1' 7")					
H Track gauge	2,390 (7' 10")					
M Max. Lifting height of dozer blade	575 (1' 11")					
N Max. depth of dozer blade	390 (1' 3")					
O Height of dozer blade	710 (2' 4")					

WORKING RANGES R235LCR-9A (DOZER TYPE)

mm (ft · in)



Boom length	5,680 (18' 8")		
Arm length	2,000 (6' 7")	2,400 (7' 10")	2,920 (9' 7")
A Max. digging reach	9,040 (29' 8")	9,430 (30' 11")	9,910 (32' 6")
A' Max. digging reach on ground	8,860 (29' 1")	9,260 (30' 5")	9,750 (31' 12")
B Max. digging depth	5,780 (18' 3")	6,180 (20' 3")	6,700 (21' 12")
B' Max. digging depth (8' level)	5,555 (18' 3")	5,980 (19' 7")	6,530 (21' 5")
C Max. vertical wall digging depth	5,140 (16' 10")	5,710 (18' 9")	6,270 (20' 7")
D Max. digging height	10,090 (33' 1")	10,420 (34' 2")	10,830 (35' 6")
E Max. dumping height	7,190 (23' 7")	7,510 (24' 8")	7,890 (25' 11")
F Min. front swing radius	2,860 (9' 5")	2,550 (8' 4")	2,350 (7' 9")

Lifting Capacities

R235LCR-9A

Rating over-front Rating over-side or 360 degrees

Boom : 5.68 m (18' 8") / Arm : 2.00 m (6' 7") / Bucket : 0.80 m³ (1.05 yd³) SAE heaped / Shoe : 600 mm (24") triple grouser

Load point height m (ft)		Load radius								At max. reach		
		3.0 m (10 ft)		4.5 m (15 ft)		6.0 m (20 ft)		7.5 m (25 ft)		Capacity		Reach m (ft)
10.5 m (35 ft)	kg									*4210	*4210	4.63
	lb									*9280	*9280	(15.2)
9.0 m (30 ft)	kg									*4630	*4630	4.48
	lb									*10210	*10210	(14.7)
7.5 m (25 ft)	kg			*4820	*4820					*4150	*4150	6.56
	lb			*10630	*10630					*9150	*9150	(21.5)
6.0 m (20 ft)	kg			*4980	*4980	*4590	*4590			*4050	*4050	7.70
	lb			*10980	*10980	*10120	*10120			*8930	*8930	(25.3)
4.5 m (15 ft)	kg	*8350	*8350	*5930	*5930	*4910	*4570			*4050	*2560	8.36
	lb	*18410	*18410	*13070	*13070	*10820	10080			*8930	*5640	(27.4)
3.0 m (10 ft)	kg			*7310	6760	*5490	4310	*4620	2960	*4080	2320	8.67
	lb			*16120	14900	*12100	9500	*10190	6530	*8990	5110	(28.4)
1.5 m (5 ft)	kg			*8410	6250	*6040	4070	*4820	2860	*4130	2270	8.66
	lb			*18540	13780	*13320	8970	*10630	6310	*9110	5000	(28.4)
Ground Line	kg			*8720	6020	*6300	3910			*4150	2390	8.36
	lb			*19220	13270	*13890	8620			*9150	5270	(27.4)
-1.5 m (-5 ft)	kg	*11480	*11480	*8320	5980	*6110	3860			*4070	2760	7.69
	lb	*25310	*25310	*18340	13180	*13470	8510			*8970	6080	(25.2)
-3.0 m (-10 ft)	kg	*9710	*9710	*7190	6090	*5140	3950			*3660	3660	6.55
	lb	*21410	*21410	*15850	13430	*11330	8710			*8070	8070	(21.5)

Boom : 5.68 m (18' 8") / Arm : 2.40 m (7' 10") / Bucket : 0.80 m³ (1.05 yd³) SAE heaped / Shoe : 600 mm (24") triple grouser

Load point height m (ft)		Load radius								At max. reach				
		1.5 m (5 ft)		3.0 m (10 ft)		4.5 m (15 ft)		6.0 m (20 ft)		7.5 m (25 ft)		Capacity		Reach m (ft)
9.0 m (30 ft)	kg											*4110	*4110	5.25
	lb											*9060	*9060	(17.2)
7.5 m (25 ft)	kg					*4280	*4280					*3820	3670	7.07
	lb					*9440	*9440					*8420	8090	(23.2)
6.0 m (20 ft)	kg					*4500	*4500	*4220	*4220			*3760	2780	8.12
	lb					*9920	*9920	*9300	*9300			*8290	6130	(26.6)
4.5 m (15 ft)	kg			*7270	*7270	*5450	*5450	*4600	*4600	*3950	3080	*3770	2350	8.74
	lb			*16030	*16030	*12020	*12020	*10140	*10140	*8710	6790	*8310	5180	(28.7)
3.0 m (10 ft)	kg			*11380	*11380	*6850	*6850	*5230	4350	*4420	2980	*3820	2150	9.04
	lb			*25090	*25090	*15100	*15100	*11530	9590	*9740	6570	*8420	4740	(29.7)
1.5 m (5 ft)	kg					*8100	6310	*5840	4080	*4690	2850	3850	2090	9.03
	lb					*17860	13910	*12870	8990	*10340	6280	8490	4610	(29.6)
Ground Line	kg			*9120	*9120	*8640	6000	*6210	3890	*4820	2750	*3930	2190	8.74
	lb			*20110	*20110	*19050	13230	*13690	8580	*10630	6060	*8660	4830	(28.7)
-1.5 m (-5 ft)	kg	*9720	*9720	*12220	11860	*8450	5920	*6160	3810			*3900	2490	8.12
	lb	*21430	*21430	*26940	26150	*18630	13050	*13580	8400			*8600	5490	(26.6)
-3.0 m (-10 ft)	kg	*14180	*14180	*10550	*10550	*7550	5990	*5480	3850			*3650	3190	7.06
	lb	*31260	*31260	*23260	*23260	*16640	13210	*12080	8490			*8050	7030	(23.2)
-4.5 m (-15 ft)	kg			*7670	*7670	*5530	*5530							
	lb			*16910	*16910	*12190	*12190							

Boom : 5.68 m (18' 8") / Arm : 2.92 m (9' 7") / Bucket : 0.80 m³ (1.05 yd³) SAE heaped / Shoe : 600 mm (24") triple grouser

Load point height m (ft)		Load radius								At max. reach				
		1.5 m (5 ft)		3.0 m (10 ft)		4.5 m (15 ft)		6.0 m (20 ft)		7.5 m (25 ft)		Capacity		Reach m (ft)
9.0 m (30 ft)	kg					*2970	*2970					*3630	*3630	6.12
	lb					*6550	*6550					*8000	*8000	(20.1)
7.5 m (25 ft)	kg							*3310	*3310			*3460	3180	7.70
	lb							*7300	*7300			*7630	7010	(25.3)
6.0 m (20 ft)	kg							*3780	*3780			*3430	2480	8.66
	lb							*8330	*8330			*7560	5470	(28.4)
4.5 m (15 ft)	kg					*4810	*4810	*4190	*4190	*3860	3140	*3460	2120	9.24
	lb					*10600	*10600	*9240	*9240	*8510	6920	*7630	4670	(30.3)
3.0 m (10 ft)	kg			*9730	*9730	*6240	*6240	*4860	4410	*4150	3000	*3520	1940	9.52
	lb			*21450	*21450	*13760	*13760	*10710	9720	*9150	6610	*7760	4280	(31.2)
1.5 m (5 ft)	kg			*9500	*9500	*7650	6410	*5560	4110	*4490	2850	3520	1890	9.52
	lb			*20940	*20940	*16870	14130	*12260	9060	*9900	6280	7760	4170	(31.2)
Ground Line	kg			*9890	*9890	*8460	6010	*6050	3880	*4720	2730	*3650	1960	9.24
	lb			*21800	*21800	*18650	13250	*13340	8550	*10410	6020	*8050	4320	(30.3)
-1.5 m (-5 ft)	kg	*8800	*8800	*12860	11680	*8530	5850	*6160	3760	*4690	2660	*3670	2190	8.66
	lb	*19400	*19400	*28350	25750	*18810	12900	*13580	8290	*10340	5860	*8090	4830	(28.4)
-3.0 m (-10 ft)	kg	*12230	*12230	*11440	*11440	*7900	5870	*5740	3750			*3560	2720	7.69
	lb	*26960	*26960	*25220	*25220	*17420	12940	*12650	8270			*7850	6000	(25.2)
-4.5 m (-15 ft)	kg			*8990	*8990	*6360	6050					*2980	*2980	6.11
	lb			*19820	*19820	*14020	13340					*6570	*6570	(20.0)

- Lifting capacity is based on SAE J1097, ISO 10567.
- Lifting capacity of the Robex Series does not exceed 75% of the tipping load with the machine on firm, level ground or 87% of full hydraulic capacity.
- The load point is a hook located on the back of the bucket.
- (*) indicates the load limited by hydraulic capacity.

Lifting Capacities

R235LCR-9A (DOZER TYPE)

Rating over-front Rating over-side or 360 degrees

Boom : 5.68 m (18' 8") / Arm : 2.00 m (6' 7") / Bucket : 0.80 m³ (1.05 yd³) SAE heaped / Shoe : 600 mm (24") triple grouser, Dozer blade Down

Load point height m (ft)		Load radius								At max. reach		
		3.0 m (10 ft)		4.5 m (15 ft)		6.0 m (20 ft)		7.5 m (25 ft)		Capacity		Reach m (ft)
10.5 m (35 ft)	kg lb									*4210 *9280	*4210 *9280	4.63 (15.2)
9.0 m (30 ft)	kg lb									*4630 *10210	*4630 *10210	4.48 (14.7)
7.5 m (25 ft)	kg lb			*4820 *10630	*4820 *10630					*4150 *9150	*4150 *9150	6.56 (21.5)
6.0 m (20 ft)	kg lb			*4980 *10980	*4980 *10980	*4590 *10120	*4590 *10120			*4050 *8930	3460 7630	7.70 (25.3)
4.5 m (15 ft)	kg lb	*8350 *18410	*8350 *18410	*5930 *13070	*5930 *13070	*4910 *10820	*4910 *10820			*4050 *8930	2920 6440	8.36 (27.4)
3.0 m (10 ft)	kg lb			*7310 *16120	*7310 *16120	*5490 *12100	4890 10780	*4620 *10190	3380 7450	*4080 *8990	2670 5890	8.67 (28.4)
1.5 m (5 ft)	kg lb			*8410 *18540	7130 15720	*6040 *13320	4640 10230	*4820 *10630	3280 7230	*4130 *9110	2620 5780	8.66 (28.4)
Ground Line	kg lb			*8720 *19220	6900 15210	*6300 *13890	4480 9880			*4150 *9150	2760 6080	8.36 (27.4)
-1.5 m (-5 ft)	kg lb	*11480 *25310	*11480 *25310	*8320 *18340	6860 15120	*6110 *13470	4430 9770			*4070 *8970	3160 6970	7.69 (25.2)
-3.0 m (-10 ft)	kg lb	*9710 *21410	*9710 *21410	*7190 *15850	6980 15390	*5140 *11330	4520 9960			*3660 *8070	*3660 *8070	6.55 (21.5)

Boom : 5.68 m (18' 8") / Arm : 2.00 m (6' 7") / Bucket : 0.80 m³ (1.05 yd³) SAE heaped / Shoe : 600 mm (24") triple grouser, Dozer blade Up

Load point height m (ft)		Load radius								At max. reach		
		3.0 m (10 ft)		4.5 m (15 ft)		6.0 m (20 ft)		7.5 m (25 ft)		Capacity		Reach m (ft)
10.5 m (35 ft)	kg lb									*4210 *9280	*4210 *9280	4.63 (15.2)
9.0 m (30 ft)	kg lb									*4630 *10210	*4630 *10210	4.48 (14.7)
7.5 m (25 ft)	kg lb			*4820 *10630	*4820 *10630					*4150 *9150	*4150 *9150	6.56 (21.5)
6.0 m (20 ft)	kg lb			*4980 *10980	*4980 *10980	*4590 *10120	*4590 *10120			*4050 *8930	3250 7170	7.70 (25.3)
4.5 m (15 ft)	kg lb	*8350 *18410	*8350 *18410	*5930 *13070	*5930 *13070	*4910 *10820	4830 10650	*4050 *8930		*4050 *8930	2730 6020	8.36 (27.4)
3.0 m (10 ft)	kg lb			*7310 *16120	7140 15740	*5490 *12100	4570 10080	*4620 *10190	3160 6970	*4080 *8990	2490 5490	8.67 (28.4)
1.5 m (5 ft)	kg lb			*8410 *18540	6630 14620	*6040 *13320	4330 9550	*4820 *10630	3050 6720	4060 8950	2440 5380	8.66 (28.4)
Ground Line	kg lb			*8720 *19220	6400 14110	*6300 *13890	4170 9190			*4150 *9150	2570 5670	8.36 (27.4)
-1.5 m (-5 ft)	kg lb	*11480 *25310	*11480 *25310	*8320 *18340	6360 14020	*6110 *13470	4120 9080			*4070 *8970	2950 6500	7.69 (25.2)
-3.0 m (-10 ft)	kg lb	*9710 *21410	*9710 *21410	*7190 *15850	6470 14260	*5140 *11330	4210 9280			*3660 *8070	*3660 *8070	6.55 (21.5)

- Lifting capacity is based on SAE J1097, ISO 10567.
- Lifting capacity of the Robex Series does not exceed 75% of the tipping load with the machine on firm, level ground or 87% of full hydraulic capacity.
- The load point is a hook located on the back of the bucket.
- (*) indicates the load limited by hydraulic capacity.

Lifting Capacities

R235LCR-9A (DOZER TYPE)

Rating over-front Rating over-side or 360 degrees

Boom : 5.68 m (18' 8") / Arm : 2.40 m (7' 10") / Bucket : 0.80 m³ (1.05 yd³) SAE heaped / Shoe : 600 mm (24") triple grouser, Dozer blade Down

Load point height m (ft)	Load radius										At max. reach			
	1.5 m (5 ft)		3.0 m (10 ft)		4.5 m (15 ft)		6.0 m (20 ft)		7.5 m (25 ft)		Capacity		Reach	
													m (ft)	
9.0 m (30 ft)	kg											*4110	*4110	5.25
	lb											*9060	*9060	(17.2)
7.5 m (25 ft)	kg					*4280	*4280					*3820	*3820	7.07
	lb					*9440	*9440					*8420	*8420	(23.2)
6.0 m (20 ft)	kg					*4500	*4500	*4220	*4220			*3760	3160	8.12
	lb					*9920	*9920	*9300	*9300			*8290	6970	(26.6)
4.5 m (15 ft)	kg			*7270	*7270	*5450	*5450	*4600	*4600	*3950	3510	*3770	2700	8.74
	lb			*16030	*16030	*12020	*12020	*10140	*10140	*8710	7740	*8310	5950	(28.7)
3.0 m (10 ft)	kg			*11380	*11380	*6850	*6850	*5230	4920	*4420	3400	*3820	2480	9.04
	lb			*25090	*25090	*15100	*15100	*11530	10850	*9740	7500	*8420	5470	(29.7)
1.5 m (5 ft)	kg					*8100	7190	*5840	4650	*4690	3270	*3880	2420	9.03
	lb					*17860	15850	*12870	10250	*10340	7210	*8550	5340	(29.6)
Ground Line	kg			*9120	*9120	*8640	6880	*6210	4460	*4820	3170	*3930	2530	8.74
	lb			*20110	*20110	*19050	15170	*13690	9830	*10630	6990	*8660	5580	(28.7)
-1.5 m (-5 ft)	kg	*9720	*9720	*12220	*12220	*8450	6790	*6160	4370			*3900	2870	8.12
	lb	*21430	*21430	*26940	*26940	*18630	14970	*13580	9630			*8600	6330	(26.6)
-3.0 m (-10 ft)	kg	*14180	*14180	*10550	*10550	*7550	6870	*5480	4420			*3650	3650	7.06
	lb	*31260	*31260	*23260	*23260	*16640	15150	*12080	9740			*8050	8050	(23.2)
-4.5 m (-15 ft)	kg			*7670	*7670	*5530	*5530							
	lb			*16910	*16910	*12190	*12190							

Boom : 5.68 m (18' 8") / Arm : 2.40 m (7' 10") / Bucket : 0.80 m³ (1.05 yd³) SAE heaped / Shoe : 600 mm (24") triple grouser, Dozer blade Up

Load point height m (ft)	Load radius										At max. reach			
	1.5 m (5 ft)		3.0 m (10 ft)		4.5 m (15 ft)		6.0 m (20 ft)		7.5 m (25 ft)		Capacity		Reach	
													m (ft)	
9.0 m (30 ft)	kg											*4110	*4110	5.25
	lb											*9060	*9060	(17.2)
7.5 m (25 ft)	kg					*4280	*4280					*3820	*3820	7.07
	lb					*9440	*9440					*8420	*8420	(23.2)
6.0 m (20 ft)	kg					*4500	*4500	*4220	*4220			*3760	2960	8.12
	lb					*9920	*9920	*9300	*9300			*8290	6530	(26.6)
4.5 m (15 ft)	kg			*7270	*7270	*5450	*5450	*4600	*4600	*3950	3280	*3770	2520	8.74
	lb			*16030	*16030	*12020	*12020	*10140	*10140	*8710	7230	*8310	5560	(28.7)
3.0 m (10 ft)	kg			*11380	*11380	*6850	*6850	*5230	4610	*4420	3170	*3820	2300	9.04
	lb			*25090	*25090	*15100	*15100	*11530	10160	*9740	6990	*8420	5070	(29.7)
1.5 m (5 ft)	kg					*8100	6690	*5840	4340	*4690	3050	*3780	2250	9.03
	lb					*17860	14750	*12870	9570	*10340	6720	*8330	4960	(29.6)
Ground Line	kg			*9120	*9120	*8640	6380	*6210	4150	*4820	2950	*3930	2360	8.74
	lb			*20110	*20110	*19050	14070	*13690	9150	*10630	6500	*8660	5200	(28.7)
-1.5 m (-5 ft)	kg	*9720	*9720	*12220	*12220	*8450	6300	*6160	4070			*3900	2670	8.12
	lb	*21430	*21430	*26940	*26940	*18630	13890	*13580	8970			*8600	5890	(26.6)
-3.0 m (-10 ft)	kg	*14180	*14180	*10550	*10550	*7550	6370	*5480	4110			*3650	3410	7.06
	lb	*31260	*31260	*23260	*23260	*16640	14040	*12080	9060			*8050	7520	(23.2)
-4.5 m (-15 ft)	kg			*7670	*7670	*5530	*5530							
	lb			*16910	*16910	*12190	*12190							

- Lifting capacity is based on SAE J1097, ISO 10567.
- Lifting capacity of the Robex Series does not exceed 75% of the tipping load with the machine on firm, level ground or 87% of full hydraulic capacity.
- The load point is a hook located on the back of the bucket.
- (*) indicates the load limited by hydraulic capacity.

Lifting Capacities

R235LCR-9A (DOZER TYPE)

Rating over-front Rating over-side or 360 degrees

Boom : 5.68 m (18' 8") / Arm : 2.92 m (9' 7") / Bucket : 0.80 m³ (1.05 yd³) SAE heaped / Shoe : 600 mm (24") triple grouser, Dozer blade Down

Load point height m (ft)		Load radius										At max. reach		
		1.5 m (5 ft)		3.0 m (10 ft)		4.5 m (15 ft)		6.0 m (20 ft)		7.5 m (25 ft)		Capacity		Reach m (ft)
9.0 m (30 ft)	kg					*2970	*2970					*3630	*3630	6.12
	lb					*6550	*6550					*8000	*8000	(20.1)
7.5 m (25 ft)	kg							*3310	*3310			*3460	*3460	7.70
	lb							*7300	*7300			*7630	*7630	(25.3)
6.0 m (20 ft)	kg							*3780	*3780			*3430	*2830	8.66
	lb							*8330	*8330			*7560	*6240	(28.4)
4.5 m (15 ft)	kg					*4810	*4810	*4190	*4190	*3860	3560	*3460	*2440	9.24
	lb					*10600	*10600	*9240	*9240	*8510	7850	*7630	*5380	(30.3)
3.0 m (10 ft)	kg			*9730	*9730	*6240	*6240	*4860	*4860	*4150	3420	*3520	*2250	9.52
	lb			*21450	*21450	*13760	*13760	*10710	*10710	*9150	7540	*7760	*4960	(31.2)
1.5 m (5 ft)	kg			*9500	*9500	*7650	7300	*5560	4680	*4490	3270	*3590	*2200	9.52
	lb			*20940	*20940	*16870	16090	*12260	10320	*9900	7210	*7910	*4850	(31.2)
Ground Line	kg			*9890	*9890	*8460	6890	*6050	4450	*4720	3140	*3650	*2280	9.24
	lb			*21800	*21800	*18650	15190	*13340	9810	*10410	6920	*8050	*5030	(30.3)
-1.5 m (-5 ft)	kg	*8800	*8800	*12860	*12860	*8530	6730	*6160	4320	*4690	3080	*3670	*2540	8.66
	lb	*19400	*19400	*28350	*28350	*18810	14840	*13580	9520	*10340	6790	*8090	*5600	(28.4)
-3.0 m (-10 ft)	kg	*12230	*12230	*11440	*11440	*7900	6750	*5740	4320			*3560	*3120	7.69
	lb	*26960	*26960	*25220	*25220	*17420	14880	*12650	9520			*7850	*6880	(25.2)
-4.5 m (-15 ft)	kg			*8990	*8990	*6360	*6360					*2980	*2980	6.11
	lb			*19820	*19820	*14020	*14020					*6570	*6570	(20.0)

Boom : 5.68 m (18' 8") / Arm : 2.92 m (9' 7") / Bucket : 0.80 m³ (1.05 yd³) SAE heaped / Shoe : 600 mm (24") triple grouser, Dozer blade Up

Load point height m (ft)		Load radius										At max. reach		
		1.5 m (5 ft)		3.0 m (10 ft)		4.5 m (15 ft)		6.0 m (20 ft)		7.5 m (25 ft)		Capacity		Reach m (ft)
9.0 m (30 ft)	kg					*2970	*2970					*3630	*3630	6.12
	lb					*6550	*6550					*8000	*8000	(20.1)
7.5 m (25 ft)	kg							*3310	*3310			*3460	*3370	7.70
	lb							*7300	*7300			*7630	*7430	(25.3)
6.0 m (20 ft)	kg							*3780	*3780			*3430	*2650	8.66
	lb							*8330	*8330			*7560	*5840	(28.4)
4.5 m (15 ft)	kg					*4810	*4810	*4190	*4190	*3860	3330	*3460	*2270	9.24
	lb					*10600	*10600	*9240	*9240	*8510	7340	*7630	*5000	(30.3)
3.0 m (10 ft)	kg			*9730	*9730	*6240	*6240	*4860	4670	*4150	3200	*3510	*2090	9.52
	lb			*21450	*21450	*13760	*13760	*10710	10300	*9150	7050	*7740	*4610	(31.2)
1.5 m (5 ft)	kg			*9500	*9500	*7650	6790	*5560	4370	*4490	3050	*3450	*2040	9.52
	lb			*20940	*20940	*16870	14970	*12260	9630	*9900	6720	*7610	*4500	(31.2)
Ground Line	kg			*9890	*9890	*8460	6390	*6050	4140	*4720	2920	*3590	*2120	9.24
	lb			*21800	*21800	*18650	14090	*13340	9130	*10410	6440	*7910	*4670	(30.3)
-1.5 m (-5 ft)	kg	*8800	*8800	*12860	12390	*8530	6240	*6160	4020	*4690	2860	*3670	*2360	8.66
	lb	*19400	*19400	*28350	27320	*18810	13760	*13580	8860	*10340	6310	*8090	*5200	(28.4)
-3.0 m (-10 ft)	kg	*12230	*12230	*11440	*11440	*7900	6250	*5740	4010			*3560	*2910	7.69
	lb	*26960	*26960	*25220	*25220	*17420	13780	*12650	8840			*7850	*6420	(25.2)
-4.5 m (-15 ft)	kg			*8990	*8990	*6360	*6360					*2980	*2980	6.11
	lb			*19820	*19820	*14020	*14020					*6570	*6570	(20.0)

- Lifting capacity is based on SAE J1097, ISO 10567.
- Lifting capacity of the Robex Series does not exceed 75% of the tipping load with the machine on firm, level ground or 87% of full hydraulic capacity.
- The load point is a hook located on the back of the bucket.
- (*) indicates the load limited by hydraulic capacity.

STANDARD EQUIPMENT R235LCR-9A

ISO Standard cabin

All-weather steel cab with 360° visibility
Safety glass windows
Rise-up type windshield wiper
Sliding fold-in front window
Sliding side window (LH)
One key fits all lockable doors
Hot & cool box
Storage compartment & Ashtray
Radio / MP3 Player with remote control and USB-input
Handsfree mobile phone system with USB-charging device
Transparent cabin roof-cover
12 volt power outlet (24V DC to 12V DC converter)
Sun visor
Rain guard - front window

Computer aided power optimization (CAPO) system

3-power modes, 2-work modes, User mode
Auto & one-touch deceleration system
Auto warm-up system
Overheat prevention system

Automatic temperature control

Air conditioner & heater
Defroster

Self-diagnostics system

Starting Aid (air grid heater) for cold weather

Centralized monitoring

LCD display
Engine speed or Trip meter
Clock
Gauges
- Fuel level gauge
- Engine coolant temperature gauge
- Hyd. oil temperature gauge
Warning lamps
- Engine warning
- Overload
- Communication error
- Low battery
- Air filter clogging
Indicators
- Max power
- Low speed/High speed
- Fuel warmer
- Auto deceleration
Rearview camera

Door and cab locks, one key

Three outside rearview mirrors

Mechanical suspension seat with heater

Adjustable joysticks

Console box tilting system

Four front working lights

Electric horn

Batteries (2 x 12V x 100 AH)

Battery master switch

Removable clean-out screen for coolers

Automatic swing brake

Fuel pre-filter with fuel warmer

Boom holding system

Arm holding system

Track shoes (600 mm; 24")

Track rail guard

Accumulator for lowering work equipment

Lower frame under cover

Viscous fan clutch

Fuel filler pump (50 ℓ/min)

Safety lock valve for boom cylinder with overload warning device

Double-acting piping kit (clamshell, etc.)

Travel alarm

Boom

5.68 m; 18' 8"

Arm

2.92 m; 9' 7"

Cabin ROPS (ISO 12117-2)

ROPS (Roll Over Protective Structure)

Hi-mate (Remote Management System)

OPTIONAL EQUIPMENT R235LCR-9A

Beacon lamp

Safety lock valve for arm cylinder

Single-acting piping kit (breaker, etc.)

Quick coupler

Arms

2.0 m; 6' 7"

2.4 m; 7' 10"

Cabin FOPS/FOG (ISO/DIS 10262 Level II)

FOPS (Falling Object Protective Structure)

FOG (Falling Object Guard)

Cabin lights

Track shoes

700 mm; 28"

800 mm; 32"

900 mm; 36"

Additional lower frame - reinforced under cover

Seat

Adjustable air suspension seat with heater

Pattern change valve (2 patterns)

- * Standard and optional equipment may vary. Contact your Hyundai dealer for more information. The machine may vary according to international standards.
- * The photos may include attachments and optional equipment that are not available in your area.
- * Materials and specifications are subject to change without advance notice.
- * All imperial measurements rounded off to the nearest pound or inch.

PLEASE CONTACT

