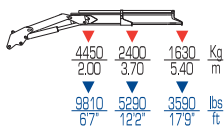


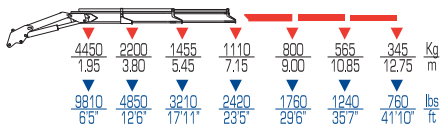
Plus



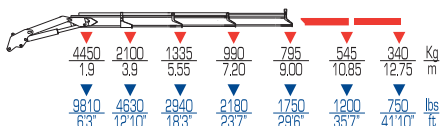
9521 P



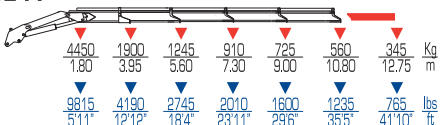
9522 P



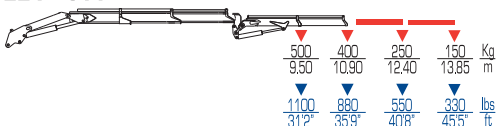
9523 P



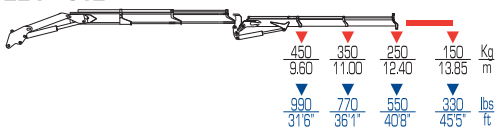
9524 P



9522 P +J11










9522 P +J12



	tm	ft lbs	l/min	gals/min	Mpa	Psi	°
9521 P	8,9	64370	30	5	27	3990	400
9522 P	8,7	62760	30	5	27	3990	400
9523 P	8,5	61160	30	5	27	3990	400
9524 P	8	54280	30	5	27	3990	400
9522 P+J11	-	-	30	5	27	3990	400
9522 P+J12	-	-	30	5	27	3990	400



 ST	 ST	 LC	 LC	mm	 ft	mm	 ft	mm	 ft
1054	2325	-	-	2390	7'10"	1985	6'6"	680	2'3"
1138	2510	1188	2620	2390	7'10"	1985	6'6"	680	2'3"
1192	2630	1252	2760	2390	7'10"	1985	6'6"	680	2'3"
1256	2770	-	-	2390	7'10"	1985	6'6"	680	2'3"
1365	3010	-	-	2350	7'9"	1985	6'6"	830	2'9"
1404	3100	-	-	2350	7'9"	1985	6'6"	830	2'9"