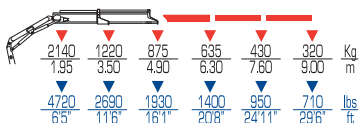
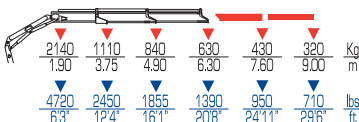




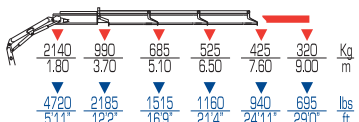
5021 P



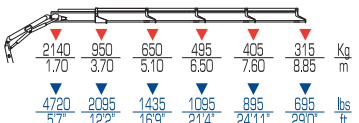
5022 P



5023 P



5024 P



	tm	ft lbs	l/min	gals/min	Mpa	Psi	°	ST	ST	mm	ft	mm	ft	mm	ft
5021 P	4.7	33970	10	3	26	3770	360	524	1155	2035	6'6"	1830	6'	600	1'9"
5022 P	4.2	30110	10	3	26	3770	360	562	1240	2035	6'6"	1830	6'	600	1'9"
5023 P	3.9	27860	10	3	26	3770	360	590	1300	2080	6'8"	1830	6'	600	1'9"
5024 P	3.6	26310	10	3	26	3770	360	608	1340	2160	7'	1830	6'	600	1'9"