

# PM 48.5 SP



Platinum Series



## DESCRIPTION TECHNICAL FEATURES

**Up to 9 hydraulic extensions**, PM 48.5 SP series ensure high performance, maximum efficiency and high level of reliability.

Articulation with the **exclusive PM link system**, increase the crane efficiency. The crane can operate with same performance and constant outreach, in every vertical configuration of the crane.

The **New Power Tronic Advance Plus** and the **new radio remote control with display** ensure extreme precision and high safety. Maximum stability thanks to XL outriggers (6,6 m) or XXL (8 m).

**15° negative angle on secondary boom** to work in narrow spaces with maximum flexibility.

Thanks to **continuous rotation** it is possible to work with maximum productivity and time saving.

## STANDARD EQUIPMENT

### POWER TRONIC ADVANCES PLUS

Maximum crane performance, maximum safety in every working condition

PROPORTIONAL HYDRAULIC CONTROL VALVE BLOCK COMPENSATED

HYDRAULIC OUTRIGGER BOOMS

ESTENSION SEQUENCE BOOMS

### CONTINUOUS ROTATION SYSTEM

DOUBLE LINKAGE

MULTIFUNCTION RADIO REMOTE CONTROL



Power Tronic Advanced Plus



Remote controlled outriggers and MCS system



Sistema di rotazione continua

# PM 48.5 SP



## OPTIONAL

### JIB

HYDRAULIC WINCH ON CRANE

HYDRAULIC WINCH ON JIB

### HOSE REEL/HOSE TRAYS

180° HYDRAULIC SWING UP  
OUTRIGGERS

## EQUIPMENTS SUMMARY

EQUIPMENTS	Standard	Optional
Continuous slewing	<input type="radio"/>	
Double linkage	<input type="radio"/>	
Hydraulic outrigger booms	<input type="radio"/>	
Remote controlled stabilizers (MCS System)*		<input type="radio"/>
180° Hydraulic swing up outriggers		<input type="radio"/>
Extension sequence booms	<input type="radio"/>	
Oil cooler	<input type="radio"/>	
Proportional hydraulic control valve block compensated	<input type="radio"/>	
Radio remote control with display	<input type="radio"/>	
Regenerative valve	<input type="radio"/>	
Jib		<input type="radio"/>
Hydraulic winch on crane		<input type="radio"/>
Hydraulic winch on jib		<input type="radio"/>
Hose reel/hose trays		<input type="radio"/>
Stability Power System*		<input type="radio"/>
Safety Kit for outriggers*	<input type="radio"/>	
Ball-joint outrigger plates *		<input type="radio"/>
4 metres alarm sensor with control panel in cab *		<input type="radio"/>
Slewing limiter	<input type="radio"/>	
LMU Device: control system for manual extensions*	<input type="radio"/>	
LED work lamp		<input type="radio"/>
Top seat with radio control support		<input type="radio"/>

\* Compulsory for totally CE configurations



In accordance to  
the EU safety  
standards



Certified quality  
management system  
UNI ISO 9001:2008



In accordance to  
HD5S2 standard



3 years of warranty on  
the structural parts

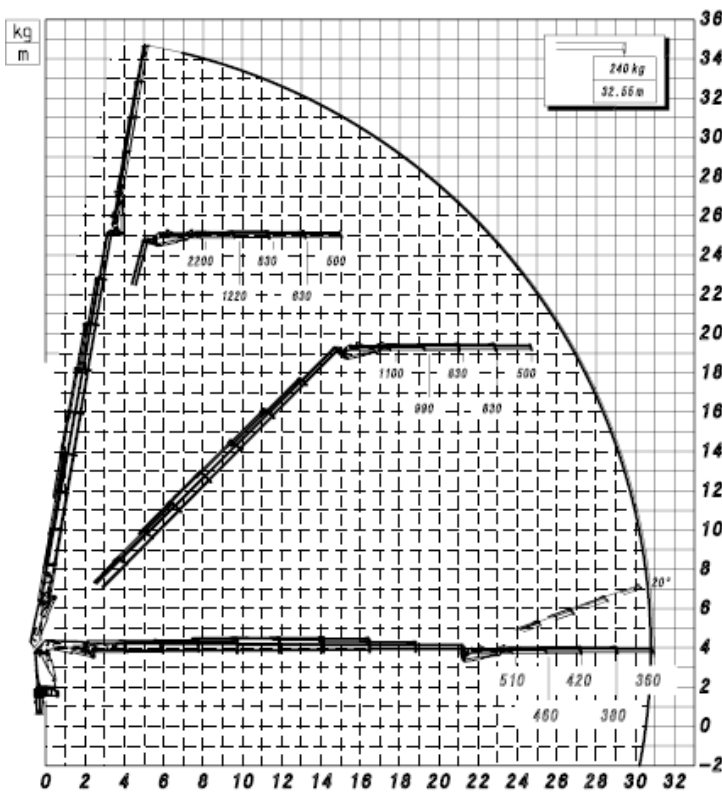
# PM 48.5 SP



truck mounted cranes

## PM 48528 SP + J614.20

Platinum Series



## TECHNICAL DATA PM 48528 SP + J614.20

Hydraulic outreach	
Horizontal	m 30,90
Vertical	m 34,65
Max. reach with manual extensions	
Horizontal	m 32,70
Vertical	m 36,35
Hydraulic system	
Max. oil flow	l/min 80 ÷ 100
Max. pressure	Mpa 33
Oil tank capacity	l 200
Slewing system	
Slewing angle	Cont.
Slewing moment	kNm 44
Standard crane weight	
Empty oil tank	Kg 6335

## TRUCKING CRANE COMBINATION

PTT/GVW	48,5	4
26,0 TON	4	 4 outriggers
32,0 TON	4	

GVW: Gross Vehicle Weight

TECHNICAL DATA, DESCRIPTIONS AND ILLUSTRATIONS ARE MERELY INDICATIVE AND NOT BINDING. PM GROUP RESERVE THE RIGHT TO UPDATE THEM WITHOUT NOTICE.

# PM 48.5 SP

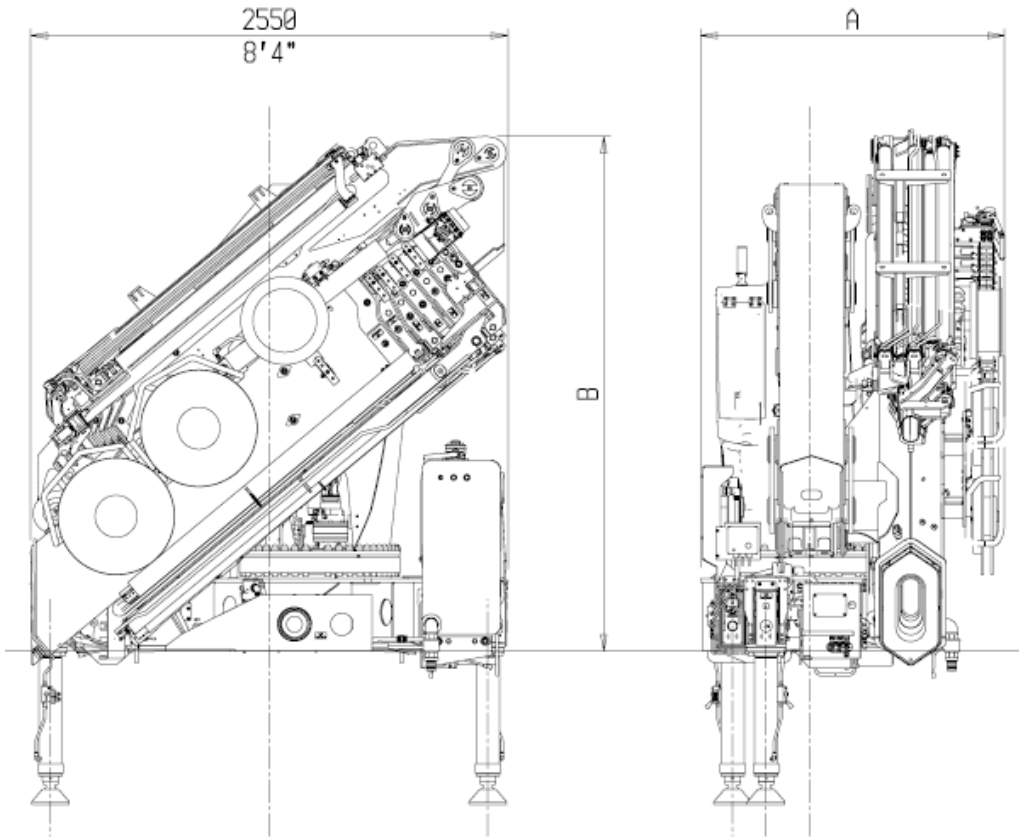


truck mounted cranes

## DIMENSIONS

Standard crane

Platinum Series



A				
	mm	ft	mm	ft
4852B SP+J614.2B	1575	5'2"	----	----

B	mm	ft
4852B SP +J1B	2768	9'1"

## ORIGINAL PM PARTS

## ACCESSORIES\*



Variable pump



PTO



Fixed pump



Clamshell Buckets



Cross Beams for car lifting



Pallet forks



Swivel Hooks



Augers



Supplementary stabilizers with integrated Stability Power System device



Log Grabs



Operator Baskets and Self-Levelling Platforms



Hydraulic Grapples



Hydraulic Rotors



Brick Grabs

\* The installation is to be verify in relation to crane and truck configuration