



Model shown may include optional equipment.

PC30-6

HYDRAULIC EXCAVATOR

**KOMATSU:
The Quality
is Standard.**

**Bucket capacity
(SAE heaped):
0.06 ~ 0.12 m³
(0.08 ~ 0.17 cu.yd)**

Greater efficiency with less effort

Features

- Large boom offset for easy side ditching.
- Wide working range, small swing radius and the highest max. dump in its class make work easy in confined areas.
- More foot room, excellent visibility, convenient controls, reduced noise and operator seat with arm rest provide greater comfort.
- Smooth swing control and reduced shock with boom cushion cylinder.
- Neutral lock on operating levers and foot guard for safety.
- Full-open machine cover and simplified air bleeding for easy maintenance.
- While engine hood protectors increase safety in confined areas, the concealed piping and well-formed undercarriage ensure safe travel over rugged terrain.
- Sealed implement pins extend greasing interval.
- Field-proven welded assembly shoes and in-shoe travel motor increase reliability.

SPECIFICATIONS



ENGINE

Komatsu 3D84 4-cycle, water-cooled, overhead valve diesel engine. 3 cylinders, 84 mm (3.30") bore × 85 mm (3.34") stroke and 1.413 ltr. (86.2 cu.in) piston displacement.

Flywheel horsepower.

29.6 HP (22.1 kW) at 2700 RPM (SAE J1349)

30 PS (22.1 kW) at 2700 RPM (DIN 6270 NET)

Swirl combustion chamber system. All-speed mechanical governor. Full-flow filter for lube purification.



HYDRAULIC SYSTEM

Hydraulic pumps

- Three gear pumps power the boom, arm, bucket, travel, swing, blade and boom offset circuits.

Capacity (discharge flow) at engine 2700 RPM

27.8 ltr. (7.3 U.S. gal)/min. × 2 + 21.2 ltr. (5.6 U.S. gal)/min. × 1

Hydraulic motors

Travel Two axial piston motors with brake valve

Swing One axial piston motor with brake valve

Relief valve setting

Implement circuits 210 kg/cm² (2,986 PSI/20.6 MPa)

Travel circuits 210 kg/cm² (2,986 PSI/20.6 MPa)

Swing circuits 165 kg/cm² (2,346 PSI/16.2 MPa)

Control valves

2-spool, 3-spool and 4-spool control valves

Hydraulic cylinders

Cylinder	Numbers	Bore × Stroke
Boom	1	80 mm × 595 mm (3.1" × 23.4")
Arm	1	75 mm × 500 mm (3.0" × 19.7")
Bucket	1	70 mm × 415 mm (2.8" × 16.3")
Boom offset	1	85 mm × 585 mm (3.3" × 23.0")
Blade	1	90 mm × 120 mm (3.54" × 4.72")



STEERING

Steering/traveling controls are activated with two hand levers.



DRIVES & BRAKES

Drive method

Fully hydrostatic type. Each track is independently driven by an axial-piston motor. Power goes through planetary eccentric single-reduction gear to track. Travel motors are neatly installed within track shoe's width (in-shoe design).

Max. drawbar pull 2690 kg (5,930 lb/26.4 kN)

Max. travel speed high 3.6 km/h (2.2 MPH)

low 2.1 km/h (1.3 MPH)

Brake method

Hydraulic lock type travel motors equipped with brake valve. When travel/steering levers are positioned in neutral, brakes automatically lock. Brake valve limits travel speed during descent.



SWING SYSTEM

Hydraulic motor-driven. Single-row-shear type ball bearings with induction-hardened internal gears are built into swing circle. Pin-lock type swing lock is provided.

Swing speed 11 RPM



BLADE

Welded, unitized construction of blade and frame.

Blade width × height 1520 mm (4'12") × 350 mm (1'2")

Max. lift above ground 350 mm (13.8")

Max. drop below ground 390 mm (15.4")



UNDERCARRIAGE

Box-section track frames. Lubricated rollers and idlers. Hydraulic track adjusters with shock absorbing springs. Welded track-type tractor shoes with double grousers.

Shoe width 300 mm (11.8")

Grouser height 16.5 mm (0.65")

Number of shoes 43 each side

Number of track rollers 4 each side

Ground pressure 0.31 kg/cm² (4.4 PSI/30.4 kPa)



COOLANT & LUBRICANT CAPACITY (refilling)

	Liter	U.S. gallon
Fuel tank	50	13.2
Coolant	5	1.3
Engine	4.2	1.1
Final drive, each side	1.2	0.3
Hydraulic tank	35	9.2



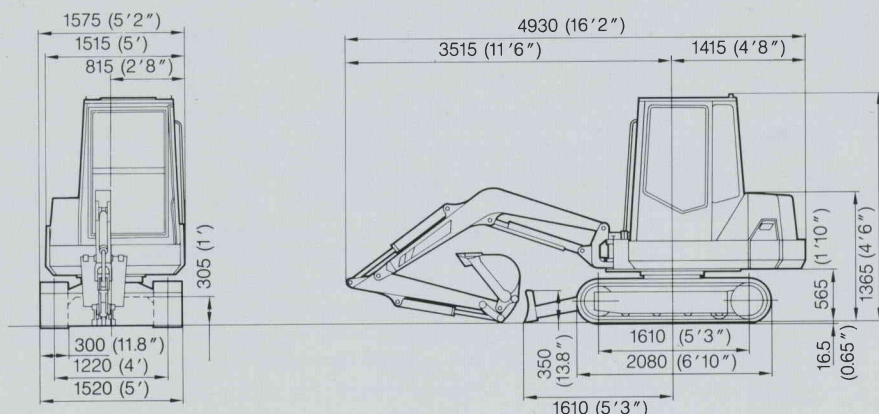
OPERATING WEIGHT (approximate)

Operating weight including 2490 mm (8'2") one-piece boom, 1360 mm (4'6") arm, SAE heaped 0.10 m³ (0.13 cu.yd) backhoe bucket, lubricant, coolant, full fuel tank, standard equipment, operator and cab (optional) 3330 kg (7,340 lb)

Unit: mm (ft.in)



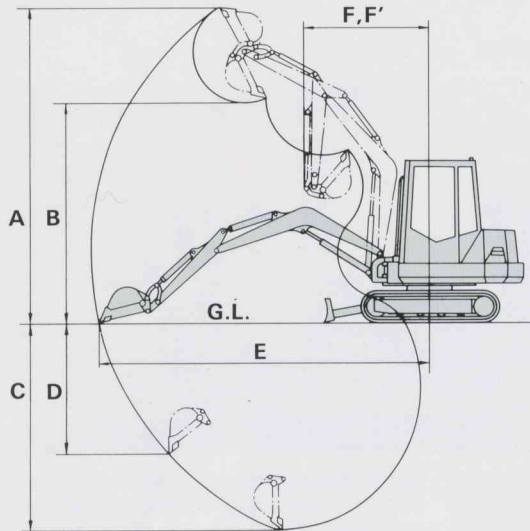
DIMENSIONS



With 2490 mm (8'2") one-piece boom, 1360 mm (4'6") arm, SAE heaped 0.10 m³ (0.13 cu.yd) backhoe bucket.



WORKING RANGE



Arm length		with 1360 mm (4'6") arm
A	Max. digging height	4660 mm (15'3") [5150 mm (16'11")]
B	Max. dumping height	3250 mm (10'8") [3670 mm (12')]
C	Max. digging depth	3075 mm (10'1") [2805 mm (9'2")]
D	Max. vertical wall digging depth	2105 mm (6'11")
E	Max. digging reach at ground level	4995 mm (16'5")
F	Min. swing radius with boom swung	1550 mm (5'1") [1310 mm (4'4")]
F'	Min. swing radius without boom swung	1900 mm (6'3") [1620 mm (5'4")]
Bucket digging force		2300 kg (5,070 lb/22.6 kN)
Arm crowd force		1340 kg (2,950 lb/13.1 kN)

Boom swing: Boom can be swung 50° to left and 90° to right by boom offset cylinder independent of upper structure swinging.

Boom offset distance: Left 710 mm (2'4")
Right..... 455 mm (1'6")

Figures in [] are for smaller swing radius models that are optionally available on canopy type machines.

STANDARD EQUIPMENT

12 V/2.5 kW electric starting motor. 12 V/35 A alternator. Dry-type air cleaner. Electric horn. Adjustable operator's seat with arm rest. 300 mm (11.8") double-grouser shoes. Hydraulic track adjusters. Full hydrostatic drive. 12 V/70 Ah battery. Front light. Floor mat. Alternator charge lamp. Warning lamp for engine oil pres-

sure and temperature. Service meter. Lubricated rollers and idlers. Fuel level gauge. Dozer blade with cylinder cover. Water separator. Side protectors for engine hood.

ATTACHMENTS

BUCKET:

Capacity: m ³ (cu.yd)			
Heaped (struck x 2)	0.09 (0.12)	0.15 (0.20)	0.18 (0.24)
JIS, CECE heaped	0.05 (0.07)	0.09 (0.12)	0.11 (0.14)
SAE, PCSA heaped	0.06 (0.08)	0.10 (0.13)	0.12 (0.17)
Struck	0.045 (0.06)	0.08 (0.10)	0.09 (0.12)
Bucket width: mm (in)			
without side cutters	300 (11.8)	500 (19.7)	600 (23.6)
with side cutters	330 (13.0)	530 (20.9)	630 (24.8)
No. of bucket teeth	3	4	5
Bucket type	Narrow	Standard	Light-duty

ARM: 1360 mm (4'6") arm

BOOM: 2490 mm (8'2") boom

Other track shoes: Choose the rubber shoes when the machine works on paved areas.

Type of shoes		Ground pressure kg/cm ² (PSI/kPa)
250 mm (9.8")	Flat shoe	0.37 (5.26/36.3)
400 mm (15.7")	Double grouser shoe	0.24 (3.41/23.5)
400 mm (15.7")	Swamp shoe	0.24 (3.41/23.5)
300 mm (11.8")	Rubber shoe	0.31 (4.41/30.4)

OPTIONAL EQUIPMENT

Plastic canopy. Steel cab includes room lamp, wiper, heater and ash tray. Windshield washer. Radio. Suspension seat. Seat belt. Dust indicator. Lockable door for cab. ROPS canopy. ROPS cab.

Hydraulic control unit for hydraulic breaker. Tool kit and ordinary spare parts.



LIFTING CAPACITY

Arm length: 1360 mm (4'6") Bucket capacity (SAE heaped): 0.10 m³ (0.13 cu.yd)

A—Reach from swing centerline

B—Bucket hook height ●—Rating at maximum reach

With blade on ground										With blade above ground							
A B	●		4.0 m (13')		3.0 m (10')		2.0 m (7')		●	●		4.0 m (13')		3.0 m (10')		2.0 m (7')	
	Diagram 1	Diagram 2	Diagram 1	Diagram 2	Diagram 1	Diagram 2	Diagram 1	Diagram 2		Diagram 1	Diagram 2	Diagram 1	Diagram 2	Diagram 1	Diagram 2	Diagram 1	Diagram 2
3.0 m kg 10' lb	*600 1300	450 1000			*600 1300	*600 1300			550 1300	450 1000				*600 1300	*600 1300		
2.0 m kg 7' lb	*600 1300	400 800	*600 1300	400 900	*750 1600	700 1500	*1150 2600	*1150 2600	450 1000	400 800	500 1100	400 900	*750 1600	700 1500	*1150 2600	*1150 2600	
1.0 m kg 3' lb	*600 1300	350 800	*700 1500	400 900	*950 2200	650 1400	*950 2100	*950 2100	450 1000	350 800	500 1100	400 900	800 1700	650 1400			
0.0 m kg 0' lb	*650 1400	350 800	*700 1600	400 900	*1100 2400	600 1400	*950 2100	*950 2100	450 1000	350 800	500 1100	400 900	750 1700	600 1400	*950 2100	*950 2100	
-1.0 m kg -3' lb	*700 1500	450 1000			*1000 2200	600 1300	*1700 3700	1150 2500	550 1200	450 1000			750 1700	600 1300	1450 3200	1150 2500	
-2.0 m kg -7' lb	*700 1500	*700 1500					*1050 2300	*1050 2300	*700 1500	*700 1500					*1050 2300	*1050 2300	

Notes: 1. Ratings are based on SAE Standard NO. J1097.

2. Lifting capacities shown do not exceed 75% of tipping load or 87% of hydraulic capacities.

3. Capacities marked with asterisk (*) are limited by hydraulic capacities.

4. Lifting capacities assume the machine equipped with 300 mm (11.8") shoe is standing level on a firm, uniform supporting surface.

5. The load point is an optional hook located on the back of the bucket.

A Familiar Feel and Better Control

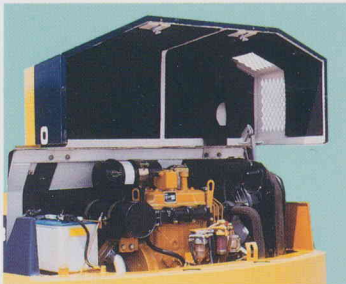
Excellent performance to tackle any job



Extra-small min. swing radius and convenient boom offset enable quick dig/load operations in extra-tight quarters when close to obstacles. The boom swings 50° to the left and 90° to the right. In addition, the PC30-6 attains a wide working range. Reinforced dozer blade with cutting edge is ideal for refilling and leveling.

Smaller swing radius option is available on canopy-type machine.

Built tough, easy to maintain



Full-open machine cover allows quick access to engine components and hydraulic equipment for quick checks and repairs. And easy air bleeding with one touch of a button.

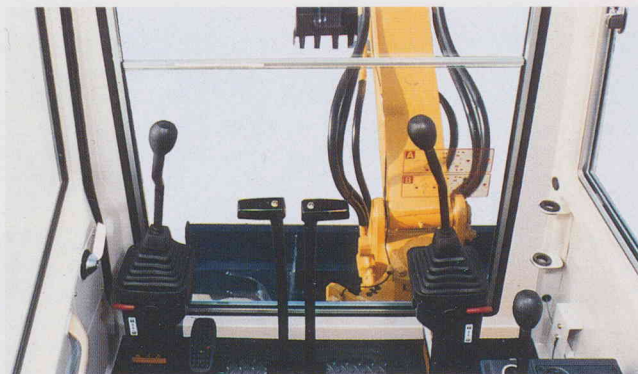


Convenient storage compartment for personal items and tools.



Optional removable rubber shoes for the PC30-6 eliminate the need to change track rollers or parts when mounting.

Easy operation



Equipped with a simple engine key stop, just like the family car.

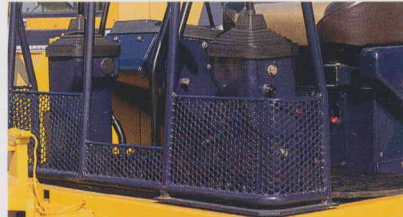
Larger floor space and greater visibility improve operating comfort. The human-engineered layout of controls, meters and gauges reduces operator fatigue and boosts operating efficiency. Komatsu's reduced noise 3D84 diesel engine.

Operator's seat with arm rest provides working comfort.

Unique Komatsu design eliminates worries



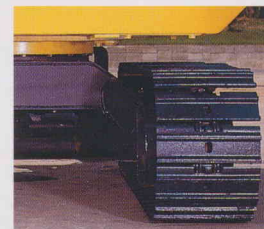
Fuel tank equipped with key to prevent vandalism.



Foot guard protects operator's feet from rocks for canopy-type machine.



Side protectors guard the PC30-6 in narrow places.



In-shoe type travel motors and concealed undercarriage-piping ensure safe travel over rugged terrain.

Brakes lock on when travel/steering levers are in neutral.

O-rings on the bucket connector pin keep dirt out to prevent wear.

This specification sheet may contain attachments and optional equipment that are not available in your area. Please consult your local Komatsu distributor for those items you may require. Materials and specifications are subject to change without notice.

KOMATSU

ÉQUIPEMENT FÉDÉRAL QUÉBEC LIMITÉE
CASE POSTALE 1447, SUCC. ST-LAURENT
ST-LAURENT, QC H4L 4Z1
VENTES - PIÈCES - SERVICE
(514) 341-4590 ou sans frais 1-800-361-1412

Date received

Printed in Japan 9420B/K.(50)