



SH
EAGLESHEARS

SH

EAGLESHEARS

The metal shear line that transformed shear design in the world by introducing the so-called naked shear. It is designed for demolition of metal structures, such as buildings, tanks, ships, bridges and much more. It is also widely utilized for steel processing in scrap yards.



Jaw design

The SH jaws are designed to work in combination and maximize cutting performances. The fixed jaw tilts the materials while the mobile jaw delivers the **full cutting power on a reduced surface**.



Forged Reversed Cylinders

The extremely powerful SH cylinder are reversed to improve rod protection and enable the "naked design" to save weight. The cylinder rod is forged to maximize **robustness and functionality**.



Auto Lube System

Shears above 7 tons are equipped with the patented **Manto-Autolube system**, an automatic greasing pump that ensures the **correct lubrication** of the important moving parts.



Rotating Group

The sturdy rotation grants **precise tool positioning** while the anticavitation valve increases operational safety.



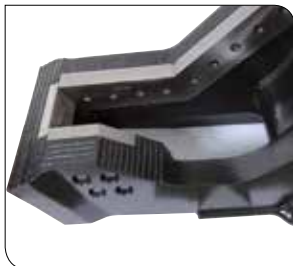
Speed-Valve

The speed valve reduces opening and closing time boosting productivity.



Blades design

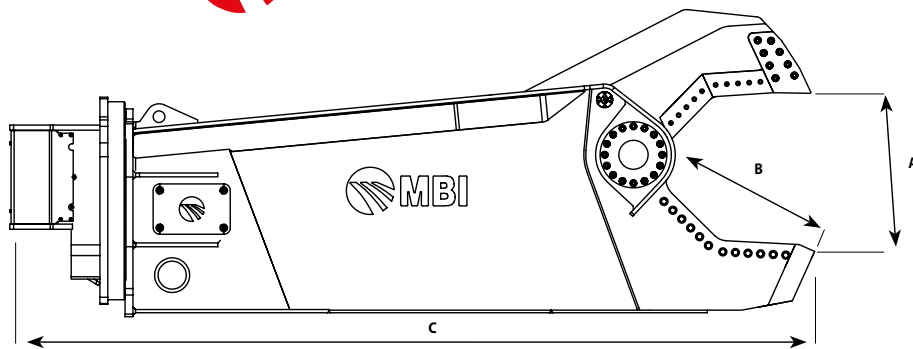
All the blades can be turned three times before replacement and are specifically shaped to **improve cutting performances**. The piercing tip and the frontal blade improve perforation capabilities.



Double Cutting Guide

Jaws alignment is vital to ensure the maximum cutting power. Two different adjustable guides allow the operator to **check and fine-tune the alignment** over time with a simple operation. In addition, the **adjustment kit on the central pin** facilitates pin removal and maintenance.





DIMENSIONS

MODEL		HYDRAULIC ROTATION 360°											
		SH25R	SH50R	SH100R	SH130R	SH180R	SH310R	SH410R	SH550R	SH700R	SH900R	SH1500R	SH2000R
A	mm	195	290	375	375	445	565	670	760	830	940	1100	1200
B	mm	200	290	395	395	525	630	720	780	840	950	1100	1200
C	mm	1350	1900	2000	2100	2700	3300	3700	3950	4300	4600	5200	6000

TECHNICAL DATA

MODEL		HYDRAULIC ROTATION 360°											
		SH25R	SH50R	SH100R	SH130R	SH180R	SH310R	SH410R	SH550R	SH700R	SH900R	SH1500R	SH2000R
EXCAVATOR WEIGHT WITH SH BUCKET PLACE	t	5-7	7-10	11-13	13-17	18-25	30-40	45-55	55-65	75-85	90-110	110-170	170-200
EXCAVATOR WEIGHT WITH SH STICK PLACE	t	2-4	4-6	7-10	8-12	14-18	20-28	28-39	39-45	45-60	60-80	80-110	110-150
TOOL WEIGHT *	kg	380	650	1100	1220	2100	3300	4700	5750	7700	10100	14500	21000
HYDRAULIC WORKING PRESSURE	bar	200-250	250-300	250-300	250-300	320-350	320-350	320-350	320-350	320-350	320-350	320-350	320-350
OIL FLOW	l/min	60-100	80-100	90-110	90-110	150-200	200-250	250-300	275-375	500-600	600-700	700-1000	700-1000
MAX HYDRAULIC MOTOR OIL PRESSURE	bar	190-200	90-100	190-200	90-100	130-150	100-115	100-115	100-115	140-150	170-190	170-200	170-200
MAX MOTOR OIL FLOW	l/min	10-15	15-20	10-15	30-40	30-40	30-40	30-40	30-40	50-60	55-65	140-150	140-150
SPEED VALVE		○	○	●	●	●	●	●	●	●	●	●	●
AUTOMATIC GREASING SYSTEM		○	○	○	○	○	○	○	○	●	●	●	●

We are constantly improving our products and therefore we reserve the right to change the design and technical specifications without prior notice.

* Tool weight does include Mantovanibenne top bracket.

○ Not available ● Available





Mantovanibenne®



SH-F

FIXED SHEARS LINE

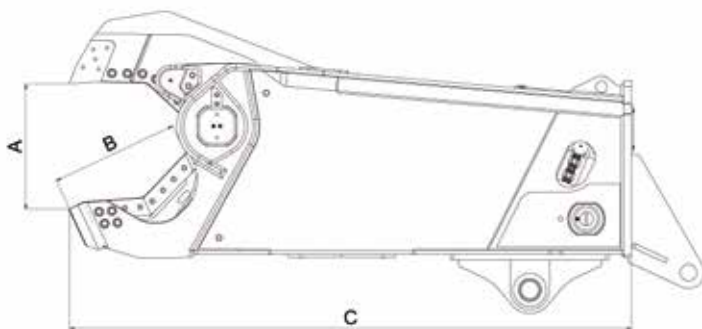
When **power** is more important than maneuverability, a shear without rotation can be the right choice.

The fixed version is **sensibly lighter and shorter** compared to the equivalent rotating model, hence the same excavator can carry a bigger and more powerful shear.

DIMENSIONS

BT.SHSR.07

MODEL		WITHOUT ROTATION						
		SH310F	SH410F	SH550F	SH700F	SH900F	SH1500F	SH2000F
A	mm	565	670	760	830	940	1100	1200
B	mm	630	720	780	840	950	1100	1200
C	mm	2850	3200	3500	3730	4070	4400	5400



TECHNICAL DATA

BT.SHSR.07

MODEL		WITHOUT ROTATION						
		SH310F	SH410F	SH550F	SH700F	SH900F	SH1500F	SH2000F
EXCAVATOR WEIGHT WITH SH BUCKET PLACE	t	25	32	40	60	80	PLEASE CONTACT CUSTOMER CARE	
EXCAVATOR WEIGHT WITH SH STICK PLACE	t	15	20	25	30	40	PLEASE CONTACT CUSTOMER CARE	
TOOL WEIGHT	kg	2800	4100	5250	6750	9100	12000	19500
HYDRAULIC WORKING PRESSURE	bar	320-350	320-350	320-350	320-350	320-350	320-350	320-350
OIL FLOW	l/min	200-250	250-300	275-375	500-600	600-700	700-1000	700-1000
SPEED VALVE		●	●	●	●	●	●	●
AUTOMATIC GREASING SYSTEM		○	○	○	●	●	●	●

We are constantly improving our products and therefore we reserve the right to change the design and technical specifications without prior notice.

○ Not available ● Available

