

Crawler Excavator

R 920 Compact

Litronic®



Motor:
110 kW / 150 HP

Stage IV / Tier 4f

Operating Weight:
18,750 – 21,900 kg

Bucket Capacity:
0.30 – 0.95 m³

LIEBHERR

Long Live Progress with the R 920 Compact

Very comfortable driver's cab

- Spacious, air-conditioned operators cab for increased productivity
- Air Suspended seat as standard equipment
- Easy-to-use high resolution 7" color touchscreen
- Completely retractable front operators cab window

Work in complete safety

- Panoramic visibility with no obstructions, and view camera on the rear and the right side as standard equipment for enhanced safety
- Secure access to the uppercarriage and operators cab
- ROPS-certified operators cab structure: rollover protection
- Emergency exit via the rear operators cab window, in all excavator's configuration
- Right window and windshield with laminated safety glass and tinted as standard equipment for more safety in case of impact

The latest technology for increased efficiency

- New Stage IV/ Tier 4f compliant technology, including a urea injection SCR system and oxidation catalyst
- Particulate filter available as an option
- Automatic idle-stop when the engine is inactive

Reliable chassis

- Robust, reliable X-frame chassis, easy to transport and secure thanks to its integrated eyelets
- Easy maintenance
- Several combinations of undercarriages and levellers available
- Optional rubber track pads for urban applications
- Extra storage option available
- Track components maintenance-free and track rollers lifetime-lubricated for easy maintenance





A wide variety of equipment options

- Broad range of equipment to adapt the excavator to different applications
- Increased durability and longevity of parts thanks to automatic lubrication as standard equipment

Noticeably compact

- Short turning radius of 1.85 m, ensuring increased safety and flexibility on work sites
- The perfect machine for narrow and compact work sites – ideal for urban, demolition, or forestry applications

Reduced maintenance time

- Innovative servicing concept, with service points accessible from the ground level
- Engine oil level can be checked and topped up from the ground
- Increased productivity thanks to automatic lubrication as standard
- Shut-off valve between hydraulic tank and pumps

Technical Data



Engine

Rating per ISO 9249	110 kW (150 HP) at 1,800 RPM
Torque	682 Nm at 1,400 RPM
Model	Liebherr D924 A7-04
Type	4 cylinder in-line
Bore/Stroke	104/132 mm
Displacement	4.5 l
Engine operation	4-stroke diesel Common-Rail turbo-charged and after-cooler reduced emissions
Exhaust gas treatment	SCR with urea injection emission standard stage IV/Tier 4f particle filter
Option	
Cooling system	water-cooled and integrated motor oil cooler
Air cleaner	dry-type air cleaner with pre-cleaner, primary and safety elements
Fuel tank	250 l
Urea tank	46 l
Electrical system	
Voltage	24 V
Batteries	2 x 135 Ah / 12 V
Alternator	three-phase current 28 V / 140 A
Engine idling	sensor controlled



Hydraulic Controls

Power distribution	via control valves with integrated safety valves, simultaneous and independent actuation of chassis, swing drive and attachment
Servo circuit	
Attachment and swing	proportional via joystick levers
Chassis	– with proportionally functioning foot pedals or adjusted with a plugable lever – speed pre-selection
Additional functions	proportional regulation via foot pedals or rocker



Hydraulic System

Hydraulic pump	Liebherr, variable displacement, swashplate pump
Max. flow	300 l/min.
Max. pressure	350 bar
Hydraulic pump regulation and control	Liebherr-Synchron-Comfort-system (LSC) with electronic engine speed sensing regulation, pressure and flow compensation, torque controlled swing drive priority
Hydraulic tank	130 l
Hydraulic system	max. 300 l
Hydraulic oil filter	1 main return filter with integrated partial micro filtration (5 µm)
Cooling system	compact cooling system comprising cooling unit for water, hydraulic oil and charge air with stepless, thermostatically controlled fan
MODE selection	adjustment of engine and hydraulic performance via a mode pre-selector to match application, e.g. for especially economical and environmentally friendly operation or for maximum digging performance and heavy-duty jobs
Engine speed and performance setting	stepless alignment of engine output and hydraulic power via engine speed



Swing Drive

Drive	Liebherr swashplate motor with torque control and integrated brake valve
Transmission	Liebherr compact planetary reduction gear
Swing ring	Liebherr, sealed race ball bearing swing ring, internal teeth
Swing speed	0 – 10.0 RPM stepless
Swing torque	51 kNm
Holding brake	wet multi-disc (spring applied, pressure released)



Operator's Cab

Cab	ROPS safety cab structure (roll-over protection system) with individual windscreens or featuring a slide-in subpart under the ceiling, work headlights integrated in the ceiling, a door with a sliding window (can be opened on both sides), large stowing and depositing possibilities, shock-absorbing suspension, sound-damping insulating, tinted laminated safety glass, separate window shades for the sunroof window and windscreen, cigarette lighter and 12 V plug, storage bins, lunchbox, cup holder
Operator's seat	Liebherr-Comfort seat, airsprung with automatic weight adjustment, vertical and longitudinal seat damping including consoles and joysticks. Seat and armrests adjustable separately and in combination, seat heating as standard
Control system	joysticks with arm consoles and swivel seat
Operation and displays	large high-resolution operating unit, self-explanatory, colour display with touchscreen, video-compatible, numerous setting, control and monitoring options, e.g. air conditioning control, fuel consumption, machine and tool parameters
Air-conditioning	automatic air-conditioning, recirculated air function, fast de-icing and demisting at the press of a button, air vents can be operated via a menu. Recirculated air and fresh air filters can be easily replaced and are accessible from the outside. Heating-cooling unit, designed for extreme outside temperatures, sensors for solar radiation, inside and outside temperatures (country-dependent) the air conditioning system contains fluorinated greenhouse gases
Refrigerant	R134a
Global warming potential	1430
Quantity at 25 °C *	1,400 ⁺²⁰ g
CO ₂ equivalent	2,002 t
Vibration emission	
Hand/arm vibrations	< 2,5 m/s ² , according with ISO 5349-1:2001
Whole-body vibrations	conforms to technical report ISO/TR 25398:2006
Measuring inaccuracy	according with standard EN 12096:1997

* valid for standard machine without operator's cab elevation and without height adjustable cab



Undercarriage

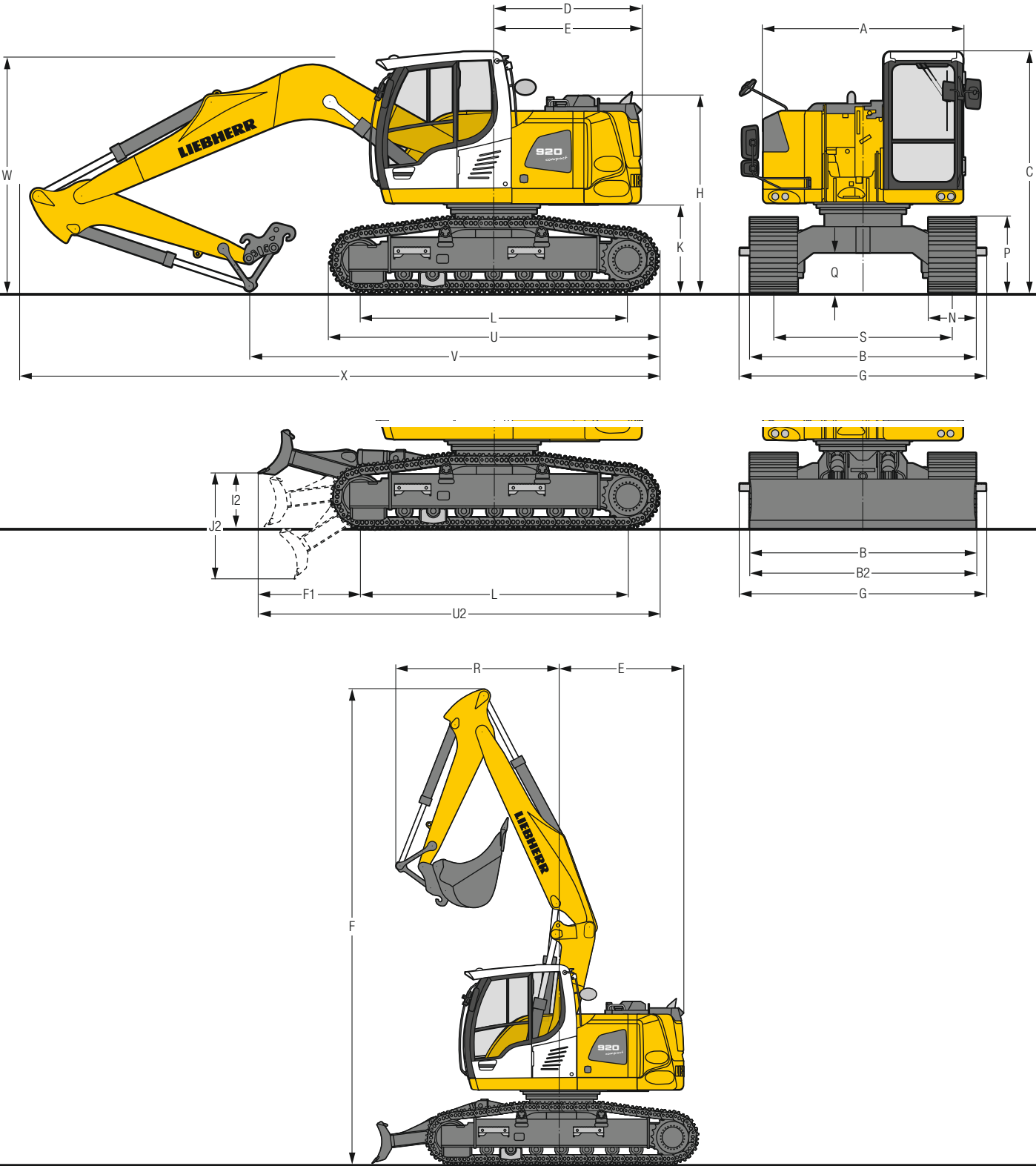
Versions	
NLC	gauge 2,000 mm
LC	standard gauge 2,250 mm
Drive	Liebherr swashplate motors with integrated brake valves on both sides
Transmission	Liebherr compact planetary reduction gear
Travel speed	low range – 2.6 km/h high range – 5.7 km/h
Net drawbar pull on crawler	192 kN
Track components	B60, maintenance-free
Track rollers / Carrier rollers	7/2
Tracks	sealed and greased
Track pads	triple grouser
Holding brake	wet multi-disc (spring applied, pressure released)
Brake valves	integrated into travel motor
Lashing eyes	integrated



Attachment

Hydraulic cylinders	Liebherr cylinders with special seal-system, shock protection
Bearings	sealed, low maintenance
Lubrication	Liebherr central lubrication system

Dimensions



	NLC			mm			NLC with blade			mm			LC			mm			LC with blade			mm		
A				2,525						2,525						2,525						2,525		
C				3,035						3,035						3,035						3,035		
D				1,850						1,850						1,850						1,850		
E				1,850						1,850						1,850						1,850		
F1				-						1,355						-						1,280		
H				2,470						2,470						2,470						2,470		
I2				-						685						-						685		
J2				-						1,320						-						1,320		
K				1,100						1,100						1,100						1,100		
L				3,370						3,370						3,370						3,370		
M2				1,685						1,685						1,685						1,685		
P				955						955						955						955		
Q				490						490						490						490		
S				2,000						2,000						2,250						2,250		
U				4,150						4,150						4,150						4,150		
U2				-						5,110						-						5,040		
N		500	600	750			500	600	750			500	600	750	900			500	600	750	900			
B		2,500	2,600	2,750			2,500	2,600	2,750			2,750	2,850	3,000	3,150			2,750	2,850	3,000	3,150			
B2				-						2,500			2,600			2,850						-		
G		2,490	2,660*	2,660*			2,490	2,660*	2,660*			2,800	2,800	3,000*	3,100*			2,800	2,800	3,000*	3,100*			

E = back tail radius

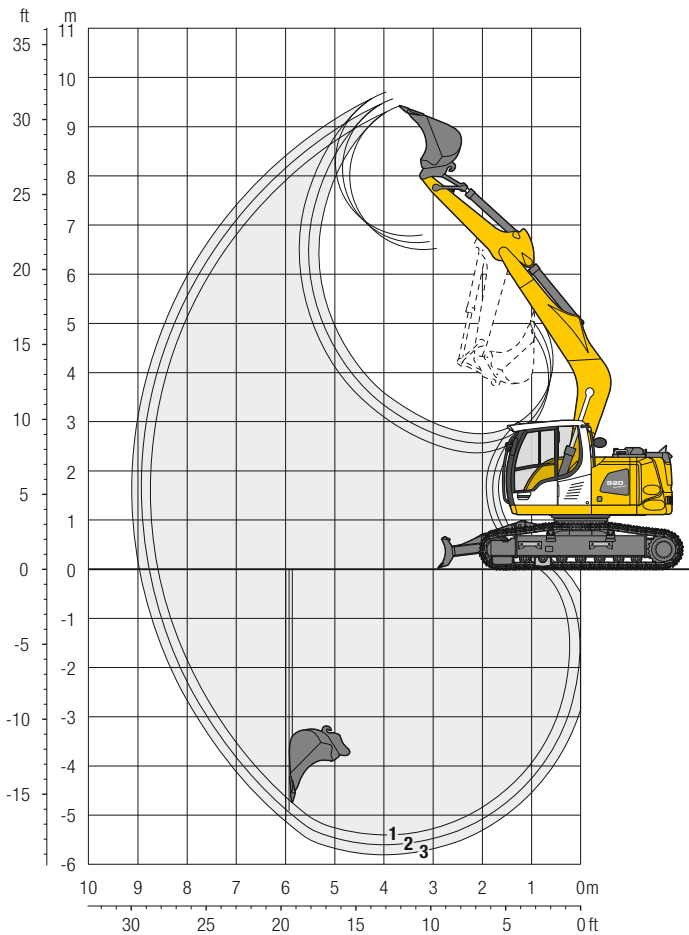
* width with removable steps

	Stick length	Mono boom 5.00 m			Two-piece boom 5.30 m			Offset mono boom 4.90 m			Offset two-piece boom 5.00 m		
	m	mm			mm			mm			mm		
V	2.25	5,150			5,700			4,950			5,400		
	2.45	5,050			5,600			4,800			5,300		
	2.65	4,850			5,500			4,650			5,200		
W	2.25	3,000			3,000			2,800			2,950		
	2.45	3,050			3,050			2,850			3,050		
	2.65	3,150			3,100			2,900			3,100		
X	2.25	8,100			8,300			7,950			8,100		
	2.45	8,100			8,300			7,950			8,100		
	2.65	8,100			8,300			7,950			8,100		
F	2.25	7,300			7,550			7,250			7,300		
	2.45	7,300			7,550			7,250			7,300		
	2.65	7,300			7,550			7,250			7,300		
R	2.25	2,550			2,650			2,750			3,100		
	2.45	2,400			2,700			2,450			2,850		
	2.65	2,450			2,750			2,300			2,750		

R = front tail radius

Backhoe Bucket

with Mono Boom 5.00 m and Counterweight 3.9 t



Digging Envelope

with quick coupler		1	2	3
Stick length	m	2.25	2.45	2.65
Max. digging depth	m	5.40	5.60	5.80
Max. reach at ground level	m	8.55	8.75	8.95
Max. dumping height	m	6.50	6.65	6.80
Max. teeth height	m	9.40	9.55	9.70

Digging Forces

without quick coupler		1	2	3
Max. digging force (ISO 6015)	kN	83.0	78.0	74.0
	t	8.5	8.0	7.5
Max. breakout force (ISO 6015)	kN	98.4	98.4	98.4
	t	10.0	10.0	10.0

Operating Weight and Ground Pressure

The operating weight includes the basic machine with counterweight 3.9 t, mono boom 5.00 m, stick 2.65 m, quick coupler SW33 and bucket 0.80 m³ (480 kg).

Undercarriage		NLC			NLC with blade		
Pad width	mm	500	600	750	500	600	750
Weight	kg	18,750	19,000	19,400	20,250	20,500	20,900
Ground pressure	kg/cm ²	0.52	0.44	0.36	0.56	0.47	0.39

Undercarriage		LC			LC with blade		
Pad width	mm	500	600	750	500	600	750
Weight	kg	18,800	19,050	19,450	20,400	20,650	21,050
Ground pressure	kg/cm ²	0.52	0.44	0.36	0.56	0.47	0.39

Buckets Machine stability per ISO 10567* (75% of tipping capacity)

	Cutting width mm	Capacity ISO 7451 m ³	Weight ³⁾ kg	NLC-Undercarriage						NLC-Undercarriage with blade						LC-Undercarriage						LC-Undercarriage with blade					
				Stick length (m)						Stick length (m)						Stick length (m)						Stick length (m)					
				without quick coupler			with quick coupler			without quick coupler			with quick coupler			without quick coupler			with quick coupler			without quick coupler			with quick coupler		
	2.25	2.45	2.65	2.25	2.45	2.65	2.25	2.45	2.65	2.25	2.45	2.65	2.25	2.45	2.65	2.25	2.45	2.65	2.25	2.45	2.65	2.25	2.45	2.65			
STD ¹⁾	500	0.30	290	▲	▲	▲	▲	▲	▲	▲	▲	▲	▲	▲	▲	▲	▲	▲	▲	▲	▲	▲	▲	▲	▲		
	650	0.42	350	▲	▲	▲	▲	▲	▲	▲	▲	▲	▲	▲	▲	▲	▲	▲	▲	▲	▲	▲	▲	▲	▲		
	850	0.60	400	▲	▲	▲	▲	▲	▲	▲	▲	▲	▲	▲	▲	▲	▲	▲	▲	▲	▲	▲	▲	▲	▲		
	1,050	0.80	480	▲	▲	▲	▲	▲	▲	▲	▲	▲	▲	▲	▲	▲	▲	▲	▲	▲	▲	▲	▲	▲	▲		
HD ²⁾	1,250	0.95	525	▲	■	■	▲	■	■	▲	▲	▲	▲	▲	▲	▲	▲	▲	▲	▲	▲	▲	▲	▲	▲		
	500	0.30	320	▲	▲	▲	▲	▲	▲	▲	▲	▲	▲	▲	▲	▲	▲	▲	▲	▲	▲	▲	▲	▲	▲		
	650	0.42	390	▲	▲	▲	▲	▲	▲	▲	▲	▲	▲	▲	▲	▲	▲	▲	▲	▲	▲	▲	▲	▲	▲		
	850	0.60	450	▲	▲	▲	▲	▲	▲	▲	▲	▲	▲	▲	▲	▲	▲	▲	▲	▲	▲	▲	▲	▲	▲		
	1,050	0.80	540	▲	▲	▲	▲	▲	▲	▲	▲	▲	▲	▲	▲	▲	▲	▲	▲	▲	▲	▲	▲	▲	▲		
	1,250	0.95	595	▲	■	■	■	■	▲	▲	▲	▲	▲	▲	▲	▲	▲	▲	▲	▲	▲	▲	▲	▲	▲		

* Indicated loads are based on ISO 10567, at maximum reach, and may be swung 360° on firm and even ground

¹⁾ Standard bucket with teeth Uni 35-3

²⁾ HD bucket with teeth Uni 35-3

³⁾ Bucket for direct mounting or mounting to quick coupler (SW33, 130 kg)

Other buckets available upon request

Max. material weight ▲ = ≤ 2.0 t/m³, ■ = ≤ 1.8 t/m³, ▲ = ≤ 1.65 t/m³

Lift Capacities

with Mono Boom 5.00 m and Counterweight 3.9 t

Stick 2.25 m

m	Under-carriage	3.0 m		4.5 m		6.0 m		7.5 m		m		
7.5	NLC ¹⁾									3.7*	3.7*	4.1
	NLC with blade ¹⁾									3.7*	3.7*	
	LC									3.7*	3.7*	
6.0	NLC ¹⁾									3.1*	3.1*	5.7
	NLC with blade ¹⁾			4.8*	4.8*					3.1*	3.1*	
	LC			4.8*	4.8*					3.1*	3.1*	
4.5	NLC ¹⁾	6.6*	6.6*	5.0	5.4*	3.2	4.9*			2.7	2.9*	6.6
	NLC with blade ¹⁾	6.6*	6.6*	5.3	5.4*	3.4	4.9*			2.9*	2.9*	
	LC	6.6*	6.6*	5.4*	5.4*	3.7	4.9*			2.9*	2.9*	
3.0	NLC ¹⁾			4.6	6.6*	3.0	5.3			2.3	3.0*	7.1
	NLC with blade ¹⁾			5.0	6.6*	3.3	5.3*			2.5	3.0*	
	LC			5.4	6.6*	3.5	5.3*			2.7	3.0*	
1.5	NLC ¹⁾			4.3	7.7*	2.9	5.1			2.2	3.2*	7.2
	NLC with blade ¹⁾			4.6	7.7*	3.1	5.2			2.4	3.2*	
	LC			5.0	7.7*	3.4	5.2			2.6	3.2*	
0	NLC ¹⁾	5.7*	5.7*	4.1	7.7	2.8	5.0			2.2	3.6*	7.0
	NLC with blade ¹⁾	5.7*	5.7*	4.4	7.8	3.0	5.1			2.4	3.6*	
	LC	5.7*	5.7*	4.8	7.8	3.3	5.1			2.6	3.6*	
-1.5	NLC ¹⁾	7.4	10.4*	4.0	7.6	2.7	4.9			2.5	4.4*	6.5
	NLC with blade ¹⁾	8.0	10.4*	4.4	7.8	3.0	5.0			2.7	4.4*	
	LC	9.0	10.4*	4.8	7.8	3.2	5.0			2.9	4.4*	
-3.0	NLC ¹⁾	7.6	9.4*	4.1	6.7*					3.2	5.1*	5.5
	NLC with blade ¹⁾	8.2	9.4*	4.5	6.7*					3.4	5.1*	
	LC	9.2	9.4*	4.8	6.7*					3.7	5.1*	

Stick 2.45 m

m	Under-carriage	3.0 m		4.5 m		6.0 m		7.5 m		m		
7.5	NLC ¹⁾									3.3*	3.3*	4.4
	NLC with blade ¹⁾									3.3*	3.3*	
	LC									3.3*	3.3*	
6.0	NLC ¹⁾									2.8*	2.8*	6.0
	NLC with blade ¹⁾			4.6*	4.6*					2.8*	2.8*	
	LC			4.6*	4.6*					2.8*	2.8*	
4.5	NLC ¹⁾			5.0	5.2*	3.2	4.7*			2.5	2.7*	6.8
	NLC with blade ¹⁾			5.2*	5.2*	3.4	4.7*			2.7*	2.7*	
	LC			5.2*	5.2*	3.7	4.7*			2.7*	2.7*	
3.0	NLC ¹⁾	8.5	9.7*	4.6	6.4*	3.0	5.2*			2.2	2.7*	7.3
	NLC with blade ¹⁾	9.2	9.7*	5.0	6.4*	3.3	5.2*			2.4	2.7*	
	LC	9.7*	9.7*	5.4	6.4*	3.5	5.2*			2.6	2.7*	
1.5	NLC ¹⁾			4.3	7.6*	2.9	5.1			2.1	2.9*	7.4
	NLC with blade ¹⁾			4.6	7.6*	3.1	5.2			2.3	2.9*	
	LC			5.0	7.6*	3.4	5.2			2.5	2.9*	
0	NLC ¹⁾	6.0*	6.0*	4.1	7.7	2.8	4.9			2.1	3.2*	7.2
	NLC with blade ¹⁾	6.0*	6.0*	4.4	7.8	3.0	5.0			2.3	3.2*	
	LC	6.0*	6.0*	4.8	7.8	3.2	5.0			2.5	3.2*	
-1.5	NLC ¹⁾	7.3	10.0*	4.0	7.6	2.7	4.9			2.4	3.9*	6.7
	NLC with blade ¹⁾	8.0	10.0*	4.3	7.7	3.0	5.0			2.6	3.9*	
	LC	8.9	10.0*	4.7	7.7	3.2	5.0			2.8	3.9*	
-3.0	NLC ¹⁾	7.5	9.7*	4.0	6.9*					2.9	5.0*	5.7
	NLC with blade ¹⁾	8.1	9.7*	4.4	6.9*					3.2	5.0*	
	LC	9.1	9.7*	4.8	6.9*					3.5	5.0*	

Stick 2.65 m

m	Under-carriage	3.0 m		4.5 m		6.0 m		7.5 m		m		
7.5	NLC ¹⁾									2.9*	2.9*	4.7
	NLC with blade ¹⁾			3.7*	3.7*					2.9*	2.9*	
	LC			3.7*	3.7*					2.9*	2.9*	
6.0	NLC ¹⁾			4.3*	4.3*	3.2	3.4*			2.5*	2.5*	6.2
	NLC with blade ¹⁾			4.3*	4.3*	3.4*	3.4*			2.5*	2.5*	
	LC			4.3*	4.3*	3.4*	3.4*			2.5*	2.5*	
4.5	NLC ¹⁾			4.9*	4.9*	3.2	4.5*			2.4	2.4*	7.0
	NLC with blade ¹⁾			4.9*	4.9*	3.4	4.5*			2.4*	2.4*	
	LC			4.9*	4.9*	3.7	4.5*			2.4*	2.4*	
3.0	NLC ¹⁾	8.6	9.1*	4.7	6.1*	3.0	5.0*			2.1	2.4*	7.5
	NLC with blade ¹⁾	9.1*	9.1*	5.0	6.1*	3.3	5.0*			2.3	2.4*	
	LC	9.1*	9.1*	5.4	6.1*	3.5	5.0*			2.4*	2.4*	
1.5	NLC ¹⁾			4.3	7.4*	2.9	5.1	2.1	3.4*	2.0	2.6*	7.6
	NLC with blade ¹⁾			4.6	7.4*	3.1	5.2	2.3	3.4*	2.2	2.6*	
	LC			5.0	7.4*	3.3	5.2	2.4	3.4*	2.4	2.6*	
0	NLC ¹⁾	6.3*	6.3*	4.0	7.7	2.7	4.9			2.0	2.9*	7.4
	NLC with blade ¹⁾	6.3*	6.3*	4.4	7.8	3.0	5.0			2.2	2.9*	
	LC	6.3*	6.3*	4.8	7.8	3.2	5.0			2.4	2.9*	
-1.5	NLC ¹⁾	7.2	9.6*	3.9	7.6	2.7	4.9			2.2	3.5*	6.9
	NLC with blade ¹⁾	7.9	9.6*	4.3	7.7	2.9	5.0			2.4	3.5*	
	LC	8.8	9.6*	4.7	7.7	3.2	5.0			2.6	3.5*	
-3.0	NLC ¹⁾	7.4	10.1*	4.0	7.1*					2.7	4.8*	6.0
	NLC with blade ¹⁾	8.0	10.1*	4.4	7.1*					3.0	4.8*	
	LC	9.0	10.1*	4.7	7.1*					3.2	4.8*	

Height Can be slewed through 360° In longitudinal position of undercarriage Max. reach * Limited by hydr. capacity

The load values are quoted in tons (t) at stick end (without bucket), and may be swung 360° on firm and even ground. Adjacent values are valid for the undercarriage when in the longitudinal position. Capacities are valid for 600 mm wide track pads. Indicated loads are based on ISO 10567 standard and do not exceed 75 % of tipping or 87 % of hydraulic capacity (indicated via *). Without bucket cylinder, link and lever the lift capacities will increase by 230 kg. Lifting capacity of the excavator is limited by machine stability and hydraulic capacity.

According to European Standard, EN 474-5: In the European Union excavators have to be equipped with an overload warning device, a load diagram and automatic safety check valves on hoist cylinders and stick cylinder(s), when they are used for lifting operations which require the use of lifting accessories.

¹⁾ Values are calculated with 500 mm wide track pads for the NLC-Undercarriage

Lift Capacities

with Two-Piece Boom 5.30 m and Counterweight 3.9 t

Stick 2.25 m

m	Under-carriage	3.0 m		4.5 m		6.0 m		7.5 m		m		
7.5	NLC ¹⁾			4.7*	4.7*					3.7*	3.7*	4.7
	NLC with blade ¹⁾			4.7*	4.7*					3.7*	3.7*	
	LC			4.7*	4.7*					3.7*	3.7*	
6.0	NLC ¹⁾			5.2	5.9*	3.2	4.2*			3.1	3.2*	6.1
	NLC with blade ¹⁾			5.5	5.9*	3.4	4.2*			3.2*	3.2*	
	LC			5.9*	5.9*	3.7	4.2*			3.2*	3.2*	
4.5	NLC ¹⁾	8.8*	8.8*	5.1	6.5*	3.3	5.4*			2.4	3.0*	7.0
	NLC with blade ¹⁾	8.8*	8.8*	5.4	6.5*	3.5	5.4*			2.6	3.0*	
	LC	8.8*	8.8*	5.8	6.5*	3.8	5.4*			2.8	3.0*	
3.0	NLC ¹⁾	8.9	10.2*	5.0	7.5*	3.3	5.4			2.2	2.9*	7.4
	NLC with blade ¹⁾	9.4	10.2*	5.3	7.5*	3.5	5.4			2.3	2.9*	
	LC	10.2*	10.2*	5.7	7.5*	3.8	5.4			2.5	2.9*	
1.5	NLC ¹⁾	8.8	11.1*	5.0	8.0	3.2	5.4	2.1	3.7	2.0	3.1*	7.6
	NLC with blade ¹⁾	9.3	11.1*	5.3	8.1	3.4	5.4	2.3	3.7	2.2	3.1*	
	LC	10.2	11.1*	5.6	8.1	3.7	5.4	2.4	3.7	2.4	3.1*	
0	NLC ¹⁾	8.8	12.6*	4.8	8.0	4.0	5.5			2.1	3.4*	7.4
	NLC with blade ¹⁾	9.4	12.6*	5.2	8.1	3.3	5.3			2.3	3.4*	
	LC	10.3	12.6*	5.6	8.1	3.5	5.3			2.4	3.4*	
-1.5	NLC ¹⁾	8.4	13.1*	4.6	8.3	2.9	5.1			2.3	4.0*	6.9
	NLC with blade ¹⁾	9.1	13.1*	4.9	8.4	3.1	5.2			2.5	4.0*	
	LC	10.1	13.1*	5.4	8.4	3.3	5.2			2.7	4.0*	
-3.0	NLC ¹⁾	8.3	13.2*	4.3	7.6*					2.9	3.8*	5.8
	NLC with blade ¹⁾	8.9	13.2*	4.7	7.6*					3.2	3.8*	
	LC	10.0	13.2*	5.1	7.6*					3.5	3.8*	
-3.0	NLC ¹⁾	10.8	13.2*	5.5	7.6*					3.8	3.8*	5.8
	NLC with blade ¹⁾											
	LC											

Stick 2.45 m

m	Under-carriage	3.0 m		4.5 m		6.0 m		7.5 m		m		
7.5	NLC ¹⁾			5.0*	5.0*					3.3*	3.3*	5.0
	NLC with blade ¹⁾			5.0*	5.0*					3.3*	3.3*	
	LC			5.0*	5.0*					3.3*	3.3*	
6.0	NLC ¹⁾			5.2	5.7*	3.2	4.6*			2.8*	2.8*	6.4
	NLC with blade ¹⁾			5.6	5.7*	3.5	4.6*			2.8*	2.8*	
	LC			5.7*	5.7*	3.7	4.6*			2.8*	2.8*	
4.5	NLC ¹⁾	7.5*	7.5*	5.1	6.3*	3.3	5.3*			2.3	2.7*	7.2
	NLC with blade ¹⁾	7.5*	7.5*	5.4	6.3*	3.6	5.3*			2.5	2.7*	
	LC	7.5*	7.5*	5.8	6.3*	3.8	5.3*			2.7*	2.7*	
3.0	NLC ¹⁾	8.9	10.2*	5.0	7.3*	3.3	5.3	2.1	3.7	2.1	2.7*	7.6
	NLC with blade ¹⁾	9.4	10.2*	5.3	7.3*	3.5	5.4	2.3	3.8	2.2	2.7*	
	LC	10.2*	10.2*	5.7	7.3*	3.8	5.4	2.5	3.8	2.4	2.7*	
1.5	NLC ¹⁾	8.8*	11.1*	4.9	8.0	3.2	5.3	2.1	3.7	2.0	2.8*	7.8
	NLC with blade ¹⁾	9.3	11.1*	5.3	8.1	3.4	5.4	2.3	3.7	2.1	2.8*	
	LC	10.1	11.1*	5.6	8.1	3.7	5.4	2.4	3.7	2.3	2.8*	
0	NLC ¹⁾	8.8	12.4*	4.8	8.0	3.0	5.3	2.0	3.6	2.0	3.0*	7.6
	NLC with blade ¹⁾	9.4	12.4*	5.2	8.1	3.3	5.4	2.2	3.7	2.2	3.0*	
	LC	10.2	12.4*	5.6	8.1	3.5	5.4	2.4	3.7	2.3	3.0*	
-1.5	NLC ¹⁾	8.4	13.0*	4.6	8.2	2.9	5.1			2.2	3.5*	7.1
	NLC with blade ¹⁾	9.0	13.0*	5.0	8.3	3.1	5.2			2.4	3.5*	
	LC	10.1	13.0*	5.4	8.3	3.4	5.2			2.6	3.5*	
-3.0	NLC ¹⁾	8.3	13.4*	4.3	8.0*	2.8	4.0*			2.7	3.5*	6.1
	NLC with blade ¹⁾	9.0	13.4*	4.7	8.0*	3.0	4.0*			2.9	3.5*	
	LC	10.0	13.4*	5.1	8.0*	3.3	4.0*			3.1	3.5*	
-3.0	NLC ¹⁾	10.8	13.4*	5.5	8.0*	3.6	4.0*			3.4	3.5*	6.1
	NLC with blade ¹⁾											
	LC											

Stick 2.65 m

m	Under-carriage	3.0 m		4.5 m		6.0 m		7.5 m		m		
7.5	NLC ¹⁾			4.9*	4.9*					3.0*	3.0*	5.3
	NLC with blade ¹⁾			4.9*	4.9*					3.0*	3.0*	
	LC			4.9*	4.9*					3.0*	3.0*	
6.0	NLC ¹⁾			5.2	5.4*	3.3	4.6*			2.6*	2.6*	6.6
	NLC with blade ¹⁾			5.4*	5.4*	3.5	4.6*			2.6*	2.6*	
	LC			5.4*	5.4*	3.8	4.6*			2.6*	2.6*	
4.5	NLC ¹⁾	6.2*	6.2*	5.1	6.1*	3.3	5.1*			2.2	2.4*	7.4
	NLC with blade ¹⁾	6.2*	6.2*	5.4	6.1*	3.6	5.1*			2.4	2.4*	
	LC	6.2*	6.2*	5.8	6.1*	3.8	5.1*			2.4*	2.4*	
3.0	NLC ¹⁾	8.9	10.1*	5.0	7.1*	3.3	5.3	2.2	3.7	2.0	2.4*	7.8
	NLC with blade ¹⁾	9.5	10.1*	5.3	7.1*	3.6	5.4	2.3	3.8	2.1	2.4*	
	LC	10.1*	10.1*	5.7	7.1*	3.8	5.4	2.5	3.8	2.3	2.4*	
1.5	NLC ¹⁾	8.7	11.0*	4.9	7.9	3.2	5.3	2.1	3.7	1.9	2.5*	8.0
	NLC with blade ¹⁾	9.2	11.0*	5.2	8.0*	3.5	5.4	2.3	3.7	2.0	2.5*	
	LC	10.1*	11.0*	5.6	8.0*	3.7	5.4	2.5	3.7	2.2	2.5*	
0	NLC ¹⁾	8.8	12.2*	4.8	7.9	3.1	5.3	2.0	3.6	1.9	2.7*	7.8
	NLC with blade ¹⁾	9.3	12.2*	5.2	8.0	3.3	5.4	2.2	3.7	2.1	2.7*	
	LC	10.2	12.2*	5.6	8.0	3.6	5.4	2.4	3.7	2.2	2.7*	
-1.5	NLC ¹⁾	8.4	12.9*	4.6	8.1	2.9	5.1			2.1	3.2*	7.3
	NLC with blade ¹⁾	9.0	12.9*	5.0	8.2	3.1	5.2			2.3	3.2*	
	LC	10.1	12.9*	5.4	8.2	3.4	5.2			2.4	3.2*	
-3.0	NLC ¹⁾	8.3	13.4*	4.3	8.1	2.8	4.6*			2.5	3.4*	6.4
	NLC with blade ¹⁾	8.9	13.4*	4.7	8.2	3.0	4.6*			2.7	3.4*	
	LC	10.0	13.4*	5.1	8.2	3.2	4.6*			2.9	3.4*	
-4.5	NLC ¹⁾	10.8	13.4*	5.5	8.2*	3.5	4.6*			3.2	3.4*	6.4
	NLC with blade ¹⁾											
	LC											

Height Can be slewed though 360° In longitudinal position of undercarriage Max. reach * Limited by hydr. capacity

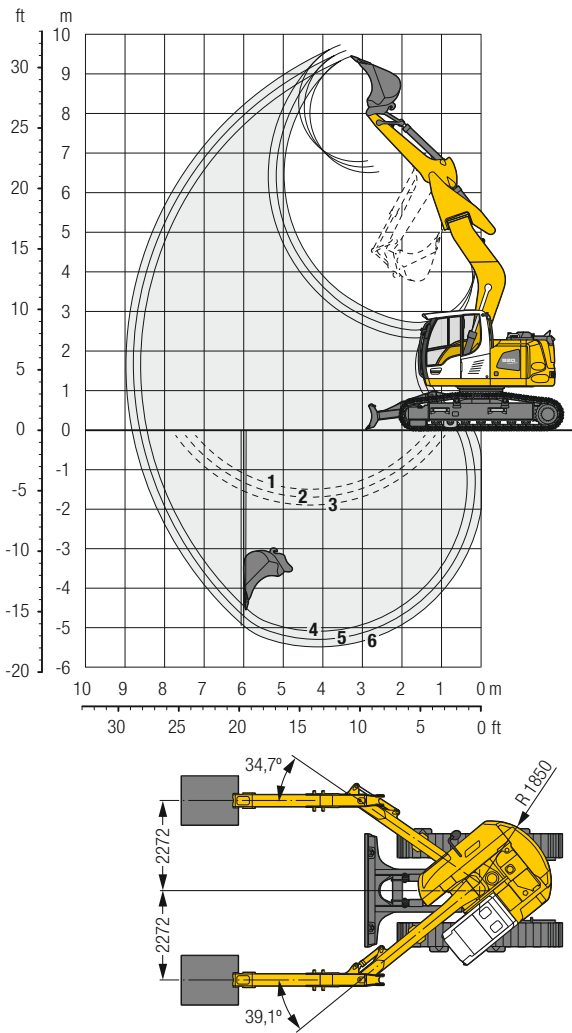
The load values are quoted in tons (t) at stick end (without bucket), and may be swung 360° on firm and even ground. Adjacent values are valid for the undercarriage when in the longitudinal position. Capacities are valid for 600 mm wide track pads with adjusting cylinder in optimal position. Indicated loads are based on ISO 10567 standard and do not exceed 75% of tipping or 87% of hydraulic capacity (indicated via *). Without bucket cylinder, link and lever the lift capacities will increase by 230 kg. Lifting capacity of the excavator is limited by machine stability and hydraulic capacity.

According to European Standard, EN 474-5: In the European Union excavators have to be equipped with an overload warning device, a load diagram and automatic safety check valves on hoist cylinders and stick cylinder(s), when they are used for lifting operations which require the use of lifting accessories.

¹⁾ Values are calculated with 500 mm wide track pads for the NLC-Undercarriage

Backhoe Bucket

with Offset Mono Boom 4.90 m and Counterweight 3.9 t



Digging Envelope

with quick coupler	4	5	6
Stick length	m 2.25	2.45	2.65
Max. digging depth	m 5.10	5.30	5.50
Max. reach at ground level	m 8.60	8.80	9.00
Max. dumping height	m 6.50	6.65	6.80
Max. teeth height	m 9.45	9.60	9.75
1 with stick 2.25 m	4 with stick 2.25 m		
2 with stick 2.45 m	5 with stick 2.45 m		
3 with stick 2.65 m	6 with stick 2.65 m		
at max. attachment offset with vertical ditch walls			
with set straight boom			

Digging Forces

without quick coupler	4	5	6
Max. digging force (ISO 6015)	kN 83.0	78.0	74.0
	t 8.5	8.0	7.5
Max. breakout force (ISO 6015)	kN 98.4	98.4	98.4
	t 10.0	10.0	10.0

Operating Weight and Ground Pressure

The operating weight includes the basic machine with counterweight 3.9 t, offset mono boom 4.90 m, stick 2.65 m, quick coupler SW33 and bucket 0.80 m³ (480 kg).

Undercarriage	NLC			NLC with blade		
Pad width	mm 500	600	750	500	600	750
Weight	kg 19,150	19,400	19,800	20,650	20,900	21,300
Ground pressure	kg/cm ² 0.53	0.45	0.36	0.57	0.48	0.39

Undercarriage	LC			LC with blade		
Pad width	mm 500	600	750	500	600	750
Weight	kg 19,200	19,450	19,850	20,800	21,050	21,450
Ground pressure	kg/cm ² 0.53	0.45	0.36	0.57	0.48	0.39

Buckets Machine stability per ISO 10567* (75% of tipping capacity)

	Cutting width mm	Capacity ISO 7451 m ³	Weight ³⁾ kg	NLC-Undercarriage						NLC-Undercarriage with blade						LC-Undercarriage						LC-Undercarriage with blade					
				Stick length (m)						Stick length (m)						Stick length (m)						Stick length (m)					
				without quick coupler			with quick coupler			without quick coupler			with quick coupler			without quick coupler			with quick coupler			without quick coupler			with quick coupler		
	2.25	2.45	2.65	2.25	2.45	2.65	2.25	2.45	2.65	2.25	2.45	2.65	2.25	2.45	2.65	2.25	2.45	2.65	2.25	2.45	2.65	2.25	2.45	2.65			
STD ¹⁾	500	0.30	290	▲	▲	▲	▲	▲	▲	▲	▲	▲	▲	▲	▲	▲	▲	▲	▲	▲	▲	▲	▲	▲	▲		
	650	0.42	350	▲	▲	▲	▲	▲	▲	▲	▲	▲	▲	▲	▲	▲	▲	▲	▲	▲	▲	▲	▲	▲	▲		
	850	0.60	400	▲	▲	▲	▲	▲	▲	▲	▲	▲	▲	▲	▲	▲	▲	▲	▲	▲	▲	▲	▲	▲	▲		
	1,050	0.80	480	▲	▲	▲	▲	▲	▲	▲	▲	▲	▲	▲	▲	▲	▲	▲	▲	▲	▲	▲	▲	▲	▲		
HD ²⁾	1,250	0.95	525	▲	■	▲	■	■	▲	▲	▲	▲	▲	▲	▲	▲	▲	▲	▲	▲	▲	▲	▲	▲	▲		
	500	0.30	320	▲	▲	▲	▲	▲	▲	▲	▲	▲	▲	▲	▲	▲	▲	▲	▲	▲	▲	▲	▲	▲	▲		
	650	0.42	390	▲	▲	▲	▲	▲	▲	▲	▲	▲	▲	▲	▲	▲	▲	▲	▲	▲	▲	▲	▲	▲	▲		
	850	0.60	450	▲	▲	▲	▲	▲	▲	▲	▲	▲	▲	▲	▲	▲	▲	▲	▲	▲	▲	▲	▲	▲	▲		
	1,050	0.80	540	▲	▲	▲	▲	▲	▲	▲	▲	▲	▲	▲	▲	▲	▲	▲	▲	▲	▲	▲	▲	▲	▲		
	1,250	0.95	595	■	■	▲	■	■	▲	▲	▲	■	▲	▲	▲	▲	▲	▲	▲	▲	▲	▲	▲	▲	▲		

* Indicated loads are based on ISO 10567, at maximum reach, and may be swung 360° on firm and even ground

¹⁾ Standard bucket with teeth Uni 35-3

³⁾ Bucket for direct mounting or mounting to quick coupler (SW33, 130 kg)

²⁾ HD bucket with teeth Uni 35-3

Other buckets available upon request

Max. material weight ▲ = ≤ 2.0 t/m³, ■ = ≤ 1.8 t/m³, ▲ = ≤ 1.65 t/m³

Lift Capacities

with Offset Mono Boom 4.90 m and Counterweight 3.9 t

Stick 2.25 m

m	Under-carriage	3.0 m		4.5 m		6.0 m		7.5 m		m		
7.5	NLC ¹⁾									3.4*	3.4*	3.8
	NLC with blade ¹⁾									3.4*	3.4*	
	LC									3.4*	3.4*	
6.0	NLC ¹⁾									2.9*	2.9*	5.6
	NLC with blade ¹⁾			5.1	5.2*					2.9*	2.9*	
	LC			5.2*	5.2*					2.9*	2.9*	
4.5	NLC ¹⁾									2.6	2.7*	6.5
	NLC with blade ¹⁾	7.1*	7.1*	4.9	5.7*	3.0	5.0*			2.7*	2.7*	
	LC	7.1*	7.1*	5.7*	5.7*	3.5	5.0*			2.7*	2.7*	
3.0	NLC ¹⁾									2.3	2.8*	7.0
	NLC with blade ¹⁾	8.2	10.3*	4.5	6.7*	2.9	5.2			2.5	2.8*	
	LC	8.8	10.3*	4.8	6.7*	3.2	5.2			2.7	2.8*	
1.5	NLC ¹⁾									2.1	3.0*	7.1
	NLC with blade ¹⁾			4.1	7.7*	2.7	5.0			2.3	3.0*	
	LC			4.8	7.7*	3.2	5.0			2.5	3.0*	
0	NLC ¹⁾									2.7	3.0*	6.9
	NLC with blade ¹⁾	6.9	6.9*	3.8	7.5	2.6	4.8			2.1	3.4*	
	LC	6.9*	6.9*	4.2	7.6	2.8	4.9			2.5	3.4*	
-1.5	NLC ¹⁾									2.8	3.4*	6.3
	NLC with blade ¹⁾	7.0	10.5*	3.8	7.4	2.6	4.8			2.4	4.3*	
	LC	8.6	10.5*	4.1	7.4*	2.8	4.9			2.6	4.3*	
-3.0	NLC ¹⁾									3.1	4.3*	5.3
	NLC with blade ¹⁾	7.2	8.1*	3.9	5.9*					3.4	4.6*	
	LC	8.1*	8.1*	4.2	5.9*					3.7	4.6*	

Stick 2.45 m

m	Under-carriage	3.0 m		4.5 m		6.0 m		7.5 m		m		
7.5	NLC ¹⁾									3.0*	3.0*	4.2
	NLC with blade ¹⁾									3.0*	3.0*	
	LC									3.0*	3.0*	
6.0	NLC ¹⁾									2.6*	2.6*	5.8
	NLC with blade ¹⁾			4.9*	4.9*					2.6*	2.6*	
	LC			4.9*	4.9*					2.6*	2.6*	
4.5	NLC ¹⁾									2.5*	2.5*	6.7
	NLC with blade ¹⁾	6.7*	6.7*	4.9	5.4*	3.1	4.8*			2.5*	2.5*	
	LC	6.7*	6.7*	5.4*	5.4*	3.6	4.8*			2.5*	2.5*	
3.0	NLC ¹⁾									2.2	2.5*	7.2
	NLC with blade ¹⁾	8.4	9.8*	4.5	6.5*	2.9	5.2			2.4	2.5*	
	LC	9.0	9.8*	4.9	6.5*	3.2	5.2*			2.5*	2.5*	
1.5	NLC ¹⁾									2.0	2.7*	7.3
	NLC with blade ¹⁾			4.1	7.5*	2.7	5.0			2.2	2.7*	
	LC			4.8	7.5*	3.0	5.0			2.4	2.7*	
0	NLC ¹⁾									2.6	2.7*	7.1
	NLC with blade ¹⁾	6.8	7.2*	3.8	7.5	2.6	4.8			2.0	3.0*	
	LC	7.2*	7.2*	4.2	7.6	2.8	4.9			2.3	3.0*	
-1.5	NLC ¹⁾									2.7	3.0*	6.6
	NLC with blade ¹⁾	6.9	10.8*	3.7	7.4	2.5	4.7			2.3	3.8*	
	LC	7.5	10.8*	4.1	7.5	2.8	4.8			2.5	3.8*	
-3.0	NLC ¹⁾									3.0	3.8*	5.6
	NLC with blade ¹⁾	7.1	8.6*	3.8	6.1*					2.9	4.6*	
	LC	7.7	8.6*	4.2	6.1*					3.2	4.6*	

Stick 2.65 m

m	Under-carriage	3.0 m		4.5 m		6.0 m		7.5 m		m		
7.5	NLC ¹⁾									2.7*	2.7*	4.5
	NLC with blade ¹⁾			2.7*	2.7*					2.7*	2.7*	
	LC			2.7*	2.7*					2.7*	2.7*	
6.0	NLC ¹⁾									2.3*	2.3*	6.0
	NLC with blade ¹⁾			4.7*	4.7*	2.4*	2.4*			2.3*	2.3*	
	LC			4.7*	4.7*	2.4*	2.4*			2.3*	2.3*	
4.5	NLC ¹⁾									2.2*	2.2*	6.9
	NLC with blade ¹⁾			5.0	5.2*	3.1	4.7*			2.2*	2.2*	
	LC			5.2*	5.2*	3.6	4.7*			2.2*	2.2*	
3.0	NLC ¹⁾									2.1	2.3*	7.3
	NLC with blade ¹⁾	8.5	9.2*	4.6	6.3*	2.9	5.1*			2.3	2.3*	
	LC	9.2*	9.2*	5.3	6.3*	3.4	5.1*			2.3*	2.3*	
1.5	NLC ¹⁾									1.9	2.4*	7.5
	NLC with blade ¹⁾	7.2*	7.2*	4.1	7.4*	2.7	5.0			2.1	2.4*	
	LC	7.2*	7.2*	4.9	7.4*	3.2	5.0			2.3	2.4*	
0	NLC ¹⁾									2.4*	2.4*	7.3
	NLC with blade ¹⁾	6.8	7.4*	3.8	7.5	2.6	4.8			1.9	2.7*	
	LC	7.4*	7.4*	4.2	7.6	2.8	4.9			2.1	2.7*	
-1.5	NLC ¹⁾									2.6	2.7*	6.8
	NLC with blade ¹⁾	6.8	10.7*	3.7	7.3	2.5	4.7			2.6	2.7*	
	LC	8.4	10.7*	4.1	7.5	2.8	4.8			2.4	3.4*	
-3.0	NLC ¹⁾									2.6	3.4*	5.8
	NLC with blade ¹⁾	7.0	9.0*	3.8	6.4*					2.8	3.4*	
	LC	7.6	9.0*	4.1	6.4*					2.7	4.5*	

Height Can be slewed through 360° In longitudinal position of undercarriage Max. reach * Limited by hydr. capacity

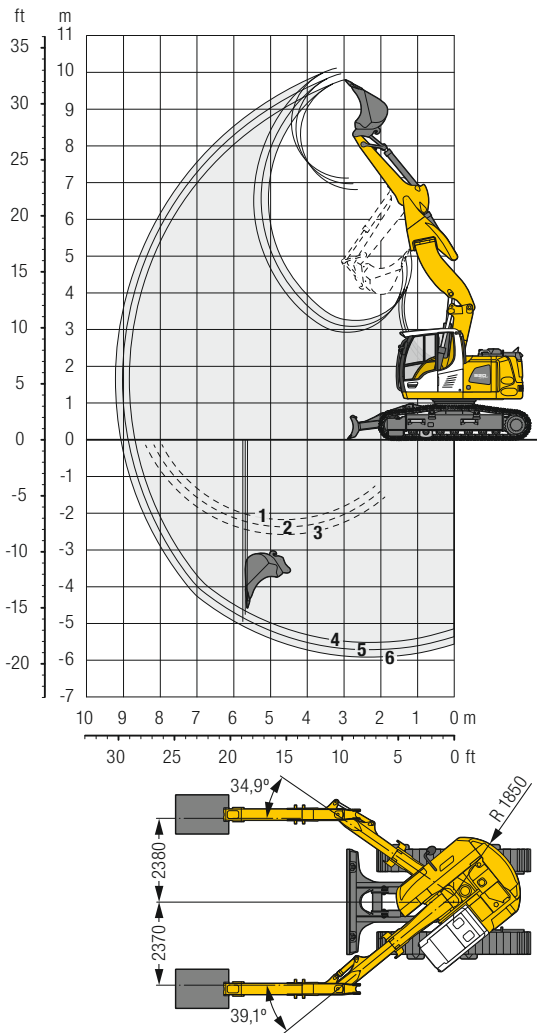
The load values are quoted in tons (t) at stick end (without bucket), and may be swung 360° on firm and even ground. Adjacent values are valid for the undercarriage when in the longitudinal position. Capacities are valid for 600 mm wide track pads. Indicated loads are based on ISO 10567 standard and do not exceed 75 % of tipping or 87 % of hydraulic capacity (indicated via *). Without bucket cylinder, link and lever the lift capacities will increase by 230 kg. Lifting capacity of the excavator is limited by machine stability and hydraulic capacity.

According to European Standard, EN 474-5: In the European Union excavators have to be equipped with an overload warning device, a load diagram and automatic safety check valves on hoist cylinders and stick cylinder(s), when they are used for lifting operations which require the use of lifting accessories.

¹⁾ Values are calculated with 500 mm wide track pads for the NLC-Undercarriage

Backhoe Bucket

with Offset Two-Piece Boom 5.00 m and Counterweight 3.9 t



Digging Envelope

with quick coupler		4	5	6
Stick length	m	2.25	2.45	2.65
Max. digging depth	m	5.50	5.70	5.90
Max. reach at ground level	m	8.65	8.85	9.05
Max. dumping height	m	6.80	6.95	7.15
Max. teeth height	m	9.80	9.95	10.10

1 with stick 2.25 m
2 with stick 2.45 m
3 with stick 2.65 m
at max. attachment offset with vertical ditch walls

4 with stick 2.25 m
5 with stick 2.45 m
6 with stick 2.65 m
with set straight boom

Digging Forces

without quick coupler		4	5	6
Max. digging force (ISO 6015)	kN	83.0	78.0	74.0
	t	8.5	8.0	7.5
Max. breakout force (ISO 6015)	kN	98.4	98.4	98.4
	t	10.0	10.0	10.0

Operating Weight and Ground Pressure

The operating weight includes the basic machine with counterweight 3.9 t, offset two-piece boom 5.00 m, stick 2.65 m, quick coupler SW33 and bucket 0.80 m³ (480 kg).

Undercarriage		NLC			NLC with blade		
Pad width	mm	500	600	750	500	600	750
Weight	kg	19,600	19,850	20,250	21,100	21,350	21,750
Ground pressure	kg/cm ²	0.54	0.46	0.37	0.58	0.49	0.40

Undercarriage		LC			LC with blade		
Pad width	mm	500	600	750	500	600	750
Weight	kg	19,650	19,900	20,300	21,250	21,500	21,900
Ground pressure	kg/cm ²	0.54	0.46	0.37	0.58	0.49	0.40

Buckets Machine stability per ISO 10567* (75% of tipping capacity)

	Cutting width mm	Capacity ISO 7451 m ³	Weight ²⁾ kg	NLC-Undercarriage						NLC-Undercarriage with blade						LC-Undercarriage						LC-Undercarriage with blade					
				Stick length (m)						Stick length (m)						Stick length (m)						Stick length (m)					
				without quick coupler			with quick coupler			without quick coupler			with quick coupler			without quick coupler			with quick coupler			without quick coupler			with quick coupler		
	2.25	2.45	2.65	2.25	2.45	2.65	2.25	2.45	2.65	2.25	2.45	2.65	2.25	2.45	2.65	2.25	2.45	2.65	2.25	2.45	2.65	2.25	2.45	2.65			
STD ¹⁾	500	0.30	290	▲	▲	▲	▲	▲	▲	▲	▲	▲	▲	▲	▲	▲	▲	▲	▲	▲	▲	▲	▲	▲	▲		
	650	0.42	350	▲	▲	▲	▲	▲	▲	▲	▲	▲	▲	▲	▲	▲	▲	▲	▲	▲	▲	▲	▲	▲	▲		
	850	0.60	400	▲	▲	▲	▲	▲	▲	▲	▲	▲	▲	▲	▲	▲	▲	▲	▲	▲	▲	▲	▲	▲	▲		
	1,050	0.80	480	▲	▲	■	▲	▲	■	▲	▲	▲	▲	▲	▲	▲	▲	▲	▲	▲	▲	▲	▲	▲	▲		
HD ²⁾	1,250	0.95	525	■	▲	■	▲	▲	■	▲	■	■	▲	■	▲	▲	▲	■	▲	▲	▲	▲	▲	▲	▲		
	500	0.30	320	▲	▲	▲	▲	▲	▲	▲	▲	▲	▲	▲	▲	▲	▲	▲	▲	▲	▲	▲	▲	▲	▲		
	650	0.42	390	▲	▲	▲	▲	▲	▲	▲	▲	▲	▲	▲	▲	▲	▲	▲	▲	▲	▲	▲	▲	▲	▲		
	850	0.60	450	▲	▲	▲	▲	▲	▲	▲	▲	▲	▲	▲	▲	▲	▲	▲	▲	▲	▲	▲	▲	▲	▲		
	1,050	0.80	540	▲	▲	■	▲	■	■	▲	▲	▲	▲	▲	▲	▲	▲	▲	▲	▲	▲	▲	▲	▲	▲		
	1,250	0.95	595	▲	▲	■	▲	■	■	▲	■	■	▲	■	■	▲	▲	■	▲	▲	▲	▲	▲	▲	▲		

* Indicated loads are based on ISO 10567, at maximum reach, and may be swung 360° on firm and even ground

¹⁾ Standard bucket with teeth Uni 35-3

²⁾ Bucket for direct mounting or mounting to quick coupler (SW33, 130 kg)

²⁾ HD bucket with teeth Uni 35-3

Other buckets available upon request

Max. material weight ▲ = ≤ 2.0 t/m³, ■ = ≤ 1.8 t/m³, ▲ = ≤ 1.65 t/m³, ■ = ≤ 1.5 t/m³

Lift Capacities

with Offset Two-Piece Boom 5.00 m and Counterweight 3.9 t

Stick 2.25 m

m	Under-carriage	3.0 m		4.5 m		6.0 m		7.5 m		m		
7.5	NLC ¹⁾									3.5*	3.5*	4.3
	NLC with blade ¹⁾									3.5*	3.5*	
	LC									3.5*	3.5*	
6.0	NLC ¹⁾									2.9*	2.9*	5.8
	NLC with blade ¹⁾									2.9*	2.9*	
	LC									2.9*	2.9*	
4.5	NLC ¹⁾									2.5*	2.7*	6.7
	NLC with blade ¹⁾	8.3*	8.3*	5.1	6.3*	3.1	5.3*			2.7*	2.7*	
	LC	8.3*	8.3*	5.8	6.3*	3.6	5.3*			2.7*	2.7*	
3.0	NLC ¹⁾									2.1	2.7*	7.2
	NLC with blade ¹⁾	8.8	10.5*	5.0	7.1*	3.1	5.3			2.3	2.7*	
	LC	10.1	10.5*	5.6	7.1*	3.6	5.3			2.5	2.7*	
1.5	NLC ¹⁾									2.0	2.9*	7.3
	NLC with blade ¹⁾	8.7	11.3*	4.9	7.8	3.0	5.3			2.2	2.9*	
	LC	10.0	11.3*	5.2	7.8*	3.3	5.3			2.4	2.9*	
0	NLC ¹⁾									2.0	3.2*	7.1
	NLC with blade ¹⁾	8.7	12.4*	4.7	7.8	2.8	5.1			2.2	3.2*	
	LC	10.2	12.4*	5.5	7.9	3.3	5.2			2.4	3.2*	
-1.5	NLC ¹⁾									2.7	3.2*	6.6
	NLC with blade ¹⁾	8.3	12.7*	4.4	8.2	2.7	4.9			2.3	3.8*	
	LC	10.0	12.7*	5.2	8.2*	3.2	5.0			2.7	3.8*	
-3.0	NLC ¹⁾									3.0	3.8*	5.4
	NLC with blade ¹⁾	8.0	12.4*	4.1	6.8*					3.3	3.8*	
	LC	9.7	12.4*	4.9	6.8*					3.6	3.8*	

Stick 2.45 m

m	Under-carriage	3.0 m		4.5 m		6.0 m		7.5 m		m		
7.5	NLC ¹⁾									3.6*	3.6*	4.6
	NLC with blade ¹⁾									3.6*	3.6*	
	LC									3.6*	3.6*	
6.0	NLC ¹⁾									5.2	5.6*	6.1
	NLC with blade ¹⁾									5.5	5.6*	
	LC									5.6*	5.6*	
4.5	NLC ¹⁾									5.1	6.1*	6.9
	NLC with blade ¹⁾	7.1*	7.1*	5.4	6.1*	3.2	5.1*			5.4	6.1*	
	LC	7.1*	7.1*	5.8	6.1*	3.7	5.1*			6.1*	6.1*	
3.0	NLC ¹⁾									4.0	5.1*	7.4
	NLC with blade ¹⁾	8.8	10.5*	5.0	7.0*	3.2	5.3			4.0	5.1*	
	LC	10.1	10.5*	5.6	7.0*	3.7	5.3			6.0	7.0*	
1.5	NLC ¹⁾									2.0	2.5*	7.5
	NLC with blade ¹⁾	8.6	11.2*	4.9	7.7*	3.1	5.2	1.9	2.8*	2.2	2.5*	
	LC	9.9	11.2*	5.6	7.7*	3.6	5.3	2.3	2.8*	2.4	2.5*	
0	NLC ¹⁾									2.0	2.5*	7.3
	NLC with blade ¹⁾	8.8	12.3*	4.8	7.8	2.9	5.1			2.2	2.9*	
	LC	10.1	12.3*	5.6	7.9	3.4	5.2			2.4	2.9*	
-1.5	NLC ¹⁾									2.5	2.9*	6.8
	NLC with blade ¹⁾	8.3	12.6*	4.4	8.1*	2.7	4.9			2.5	2.9*	
	LC	10.0	12.6*	5.2	8.1*	3.2	5.0			2.7	4.9	
-3.0	NLC ¹⁾									2.8	3.4*	5.8
	NLC with blade ¹⁾	8.0	12.8*	4.1	7.3*					3.0	3.5*	
	LC	9.7	12.8*	4.9	7.3*					3.0	3.5*	

Stick 2.65 m

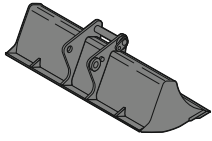
m	Under-carriage	3.0 m		4.5 m		6.0 m		7.5 m		m		
7.5	NLC ¹⁾									2.8*	2.8*	4.9
	NLC with blade ¹⁾									2.8*	2.8*	
	LC									2.8*	2.8*	
6.0	NLC ¹⁾									2.4*	2.4*	6.3
	NLC with blade ¹⁾									2.4*	2.4*	
	LC									2.4*	2.4*	
4.5	NLC ¹⁾									2.2	2.3*	7.1
	NLC with blade ¹⁾	6.0*	6.0*	5.1	5.9*	3.2	5.0*			2.3*	2.3*	
	LC	6.0*	6.0*	5.4	5.9*	3.5	5.0*			2.3*	2.3*	
3.0	NLC ¹⁾									2.2	2.2*	7.6
	NLC with blade ¹⁾	8.9	10.3*	5.0	6.8*	3.2	5.2	2.0	2.9*	2.2*	2.2*	
	LC	10.2	10.3*	5.6	6.8*	3.7	5.3	2.3	2.9*	2.2*	2.2*	
1.5	NLC ¹⁾									2.2	2.2*	7.7
	NLC with blade ¹⁾	9.4	10.3*	5.3	6.8*	3.5	5.3	2.2	2.9*	2.2*	2.2*	
	LC	10.3*	10.3*	6.0	6.8*	4.0	5.3*	2.6	2.9*	2.2*	2.2*	
0	NLC ¹⁾									2.2	2.3*	7.0
	NLC with blade ¹⁾	8.6	11.2*	4.9	7.6*	3.1	5.2	1.9	3.5	2.3*	2.3*	
	LC	9.1	11.2*	5.2	7.6*	3.3	5.3	2.1	3.6	2.2	2.3*	
-1.5	NLC ¹⁾									2.2	2.3*	7.5
	NLC with blade ¹⁾	10.5	11.2*	5.9	7.6*	3.9	5.3	2.5	3.7	2.2	2.3*	
	LC	10.6	11.2*	6.0	7.8*	3.7	5.3	2.4	2.9*	2.4	2.6*	
-3.0	NLC ¹⁾									2.0	3.0*	6.1
	NLC with blade ¹⁾	8.3	12.5*	4.5	8.0	2.7	4.9			2.2	3.0*	
	LC	10.0	12.5*	5.3	8.0	3.2	5.0			2.4	3.0*	

Height Can be slewed though 360° In longitudinal position of undercarriage Max. reach * Limited by hydr. capacity

The load values are quoted in tons (t) at stick end (without bucket), and may be swung 360° on firm and even ground. Adjacent values are valid for the undercarriage when in the longitudinal position. Capacities are valid for 600 mm wide track pads with adjusting cylinder in optimal position. Indicated loads are based on ISO 10567 standard and do not exceed 75% of tipping or 87% of hydraulic capacity (indicated via *). Without bucket cylinder, link and lever the lift capacities will increase by 230 kg. Lifting capacity of the excavator is limited by machine stability and hydraulic capacity. According to European Standard, EN 474-5: In the European Union excavators have to be equipped with an overload warning device, a load diagram and automatic safety check valves on hoist cylinders and stick cylinder(s), when they are used for lifting operations which require the use of lifting accessories.

¹⁾ Values are calculated with 500 mm wide track pads for the NLC-Undercarriage

Available Tools



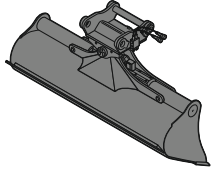
Rigid Ditch Cleaning Bucket

GRL 90, for direct mounting

Cutting width	mm	1,500	2,000	2,000
Capacity	m ³	0.35	0.48	0.65
Weight	kg	275	350	390

GRL 90, for mounting to quick coupler SW33

Cutting width	mm	1,500	2,000	2,000
Capacity	m ³	0.50	0.48	0.65
Weight	kg	360	350	390



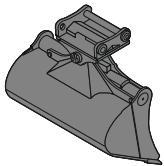
Ditch Cleaning Bucket

GRL 90, 2 x 50° tiltable, for direct mounting

Cutting width	mm	1,600	1,600	2,000	2,000	2,200	2,400
Capacity	m ³	0.55	0.80	0.50	0.70	0.80	0.85
Weight	kg	640	770	650	790	800	850

GRL 90, 2 x 50° tiltable, for mounting to quick coupler SW33

Cutting width	mm	1,600	1,600	2,000	2,000	2,000	2,200
Capacity	m ³	0.55	0.80	0.50	0.70	1.00	0.80
Weight	kg	650	770	660	780	880	800



Tilt Bucket

SL 90, 2 x 50° tiltable, for direct mounting

Cutting width	mm	1,500	1,600
Capacity	m ³	0.60	0.80
Weight	kg	650	740

SL 90, 2 x 50° tiltable, for mounting to quick coupler SW33

Cutting width	mm	1,500	1,600	1,600
Capacity	m ³	0.60	0.80	1.00
Weight	kg	660	740	740

Standard Equipment

Undercarriage

Chain guide 1 piece
Lashing eyelets
Sprocket with dirt ejector
Track rollers, lifetime-lubricated
Tracks, sealed and greased

Uppercarriage

Engine hood with gas spring opening
Headlights on uppercarriage, front, halogen, 2 pieces, protections included
Manual main switch
Non slip surfaces
Right-hand rearview mirrors
Service doors, lockable
Tool set 32 pieces

Hydraulic System

Filter with integrated fine filter area
Liebherr hydraulic oil
Pressure storage for controlled lowering of equipment with engine turned off
Pressure test ports for hydraulic
Shut-off valve between hydraulic tank and pumps
Work mode selector

Engine

Common-Rail injection system
Conform with stage IV/Tier 4f emission standard
DOC/SCR exhaust gas after-treatment system
Engine idling, automatic, sensor-controlled
Fixed geometry turbo charger
Fuel filter and water separator
Intercooler
Stepless adjustable engine speed

Operator's Cab

7" colour multifunction display with touchscreen
Air conditioning, automatic
Camera for monitoring right side
Cigarette lighter
Coat hook
Cup holder
Electronic gauge for urea level
Fuel consumption indicator on touchscreen
Headlights on cab, front, halogen, 2 pieces
Hydraulic suspension
Impact-resistant roof window, right window and windshield with laminated safety glass
Interior light
LiDAT Plus (Liebherr data transfer system)*
Mechanical hour meters, readable from outside the cab
Operator seat Comfort with longitudinal and vertical damping
Preparation for radio installation
Rain hood over front window opening
Rearview mirrors
Rear view monitoring camera
Rear window emergency exit
Retractable seat belt 51 mm
Roll-down sun blinds (front and roof windows)
ROPS safety cab structure (ISO 12117-2)
Rubber floor mat
Sliding windows in cab door
Storage bin
Storage spaces
Tilttable console left
Tinted windows
Windscreen, totally or partially retractable
Wiper/washer

Attachment

Boom cylinders oil regeneration
Centralised lubrication system (automatic)
Headlights on boom, halogen, 2 pieces
Safety check valves for hoist cylinders
Safety check valves for stick cylinder
Stick cylinder oil regeneration

Non-exhaustive list, please contact us for further information.

* optionally extendable after one year

Options

Undercarriage

- Chain guide 3 pieces
- Dozer and stabilizer blade
- Reinforced cover and base plate for undercarriage centre section
- Rubber track pads
- Special painting
- Steps, wide version
- Undercarriage storage compartment

Uppercarriage

- Extended tool set including tool box
- Fuel anti-theft device
- Headlight on uppercarriage, lateral right, LED, 1 piece
- Headlights on counterweight, LED, 2 pieces
- Pre-heating system for fuel (24 V)
- Reversible fan drive
- Special painting
- Tank refilling pump fuel

Hydraulic System

- Bypass filter for hydraulic oil
- Liebherr hydraulic oil, adapted for extreme climate conditions
- Liebherr hydraulic oil, biodegradable

Engine

- Automatic engine shut-down after idling
- Diesel particulate filter

Operator's Cab

- 3" seat belt with retractor
- Acoustic travel alarm deactivatable
- Amber beacon on cabin
- Auxiliary heater (programmable)
- Bottom windscreen wiper
- Cool box (12 V)
- Electronic immobilizer
- Falling objects protection structure FOPS
- Fire extinguisher

Operator's Cab

- First-aid box
- Footrest
- Front guard protection structure FGPS
- Handrests elevated for joysticks
- Headlights on cab, front, LED, 2 pieces
- Headlights on cab, rear, halogen, 2 pieces
- Headlights on cab, rear, LED, 2 pieces
- Headlights on cab roof, front, halogen, 2 pieces
- Headlights on cab roof, front, LED, 2 pieces
- Impact-resistant one-piece windscreen
- Liebherr proportional control (mini-joysticks 2 axis)
- Operator seat Comfort with 4-points seat belt
- Operator seat Premium with integrated ventilation
- Radio Comfort
- Roof window wiper
- Special painting
- Sunshield on cab roof
- Sun visor
- Switchable high-pressure control
- Windscreen bottom protection grid

Attachment

- Bottom protection for stick
- Centralised lubrication extended for connecting link
- Filter for hydraulic hammer return flow
- Grapple hydraulic lines
- Headlight guards on boom
- Headlights on boom, LED, 2 pieces
- Headlights on stick, right and left, LED, 2 pieces
- High pressure circuit with Tool Control (10 tool adjustments selectable over the display)
- Liebherr bucket range
- Liebherr tooth system
- LIKUFIX, quick coupling system for hydraulic tools
- Limitation for boom up
- Limitation for stick up
- Load holding valve for bucket cylinder
- Medium pressure circuit
- Overload warning device
- Preparation for machine guidance system
- Protection for piston rod, bucket cylinder
- Quick coupler 33 hydraulic
- Quick coupler 33 mechanical
- Quick coupler 48 hydraulic
- Quick coupler 48 mechanical
- Security for hoist cylinders
- Special painting

Non-exhaustive list, please contact us for further information.

Options and/or special attachments, supplied by vendors other than Liebherr, are only to be installed with the knowledge and approval of Liebherr in order to retain warranty.

The Liebherr Group of Companies



Wide Product Range

The Liebherr Group is one of the largest construction equipment manufacturers in the world. Liebherr's high-value products and services enjoy a high reputation in many other fields. The wide range includes domestic appliances, aerospace and transportation systems, machine tools and maritime cranes.

Exceptional Customer Benefit

Every product line provides a complete range of models in many different versions. With both their technical excellence and acknowledged quality, Liebherr products offer a maximum of customer benefits in practical applications.

State-of-the-art Technology

To provide consistent, top quality products, Liebherr attaches great importance to each product area, its components and core technologies. Important modules and components are developed and manufactured in-house, for instance the entire drive and control technology for construction equipment.

Worldwide and Independent

Hans Liebherr founded the Liebherr family company in 1949. Since that time, the enterprise has steadily grown to a group of more than 130 companies with over 41,000 employees located on all continents. The corporate headquarters of the Group is Liebherr-International AG in Bulle, Switzerland. The Liebherr family is the sole owner of the company.

www.liebherr.com

Liebherr-France SAS

2 avenue Joseph Rey, B.P. 90287, FR-68005 Colmar Cedex
☎ +33 389 21 30 30, Fax +33 389 21 37 93
www.liebherr.com, E-Mail: info.lfr@liebherr.com
www.facebook.com/LiebherrConstruction