

Reliability in Action

Wheeled Loader LG953N



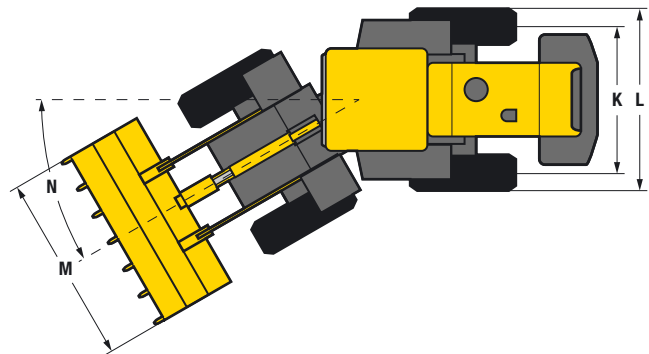
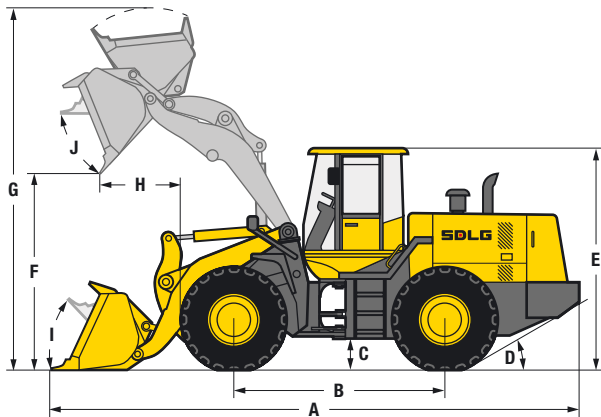
Wheeled Loader LG953N



LG953N

Reliability, high performing equipment and leading fuel efficiency all combine to make the 16.6 tonne LG953N an excellent choice for productivity and uptime in all environments. The LG953N offers superb traction, excellent breakout force and a rigid structure. All SDLG wheeled loader models are rigorously tested to ensure reliability in action.

- The box structure frame of the LG953N gives best-in-class robustness.
 - The access panels on the rear of the machine swing outwards to make daily checks and maintenance much easier.
 - Optional single joystick operation available for easy and comfortable bucket operation.
- There is a wide range of attachments available for the LG953N including:
- General purpose buckets (different sizes)
 - Rock buckets
 - Light material buckets
 - Pallet forks



Description	Specification
Operating weight	16 600 kg
Bucket capacity	2.2 ~ 4.5 m ³
Lift capacity (rated load)	5 000 kg
Maximum breakout force	185 kN
Dimensions	
A. Overall length	7 794 mm
B. Wheel base	2 920 mm
C. Ground clearance	534 mm
D. Approach angle back	29°
E. Overall height	3 423 mm
F. Dump height	3 050 mm
G. Overall operating height	5 429 mm
H. Dump reach	1 190 mm
I. Roll back angle ground level	51°
J. Roll back level full height	60°
K. Track width	2 250 mm
L. Machine width	2 845 mm
M. Bucket width	3 024 mm
N. Steering angle	35°
Engine*	
Model	Weichai WD10G220E23
Type	Watercooled, in line, dry cylinder liner, direct injection
Rated power (SAE J1349)	162 kW @ 2000 rpm
Maximum torque	980 Nm

* Engine type may vary according to market

Description	Specification
Transmission	
Type	Planetary power shift
Number of gears	2 forward, 1 reverse
Maximum travel speed	Forward 38 km/h Reverse 17 km/h
Drive type	4 wheel drive
Tyre dimension	23.5 - 25
Tyre pressure	Front 55.1 - 58.0 psi Rear 46.4 - 49.3 psi
Service brake type	Air over hydraulic disc brake
Parking brake type	Manual, caliper disc
Service fill capacities	
Fuel	260 L
Hydraulic oil	240 L
Axles (main and final drives)	52 L
Engine	20 L
Transmission	44 L
Brake system	5 L
Hydraulics	
Type	Mechanical manual control
Boom lift time	5.7 sec
Total cycle time	10.3 sec



SDLG machines are built to be like the people that own them: hardworking, genuine and reliable. Cost effective, robust machines with fuel efficient engines that are easy to operate and easy to maintain.

Everything about SDLG is designed to give you the confidence that you can complete the job to a high standard and on schedule. And when you need parts or service, you can trust your SDLG dealer to deliver on our promise.

When you buy SDLG, you're buying reliability: **Reliability in Action.**



www.sdlg.com