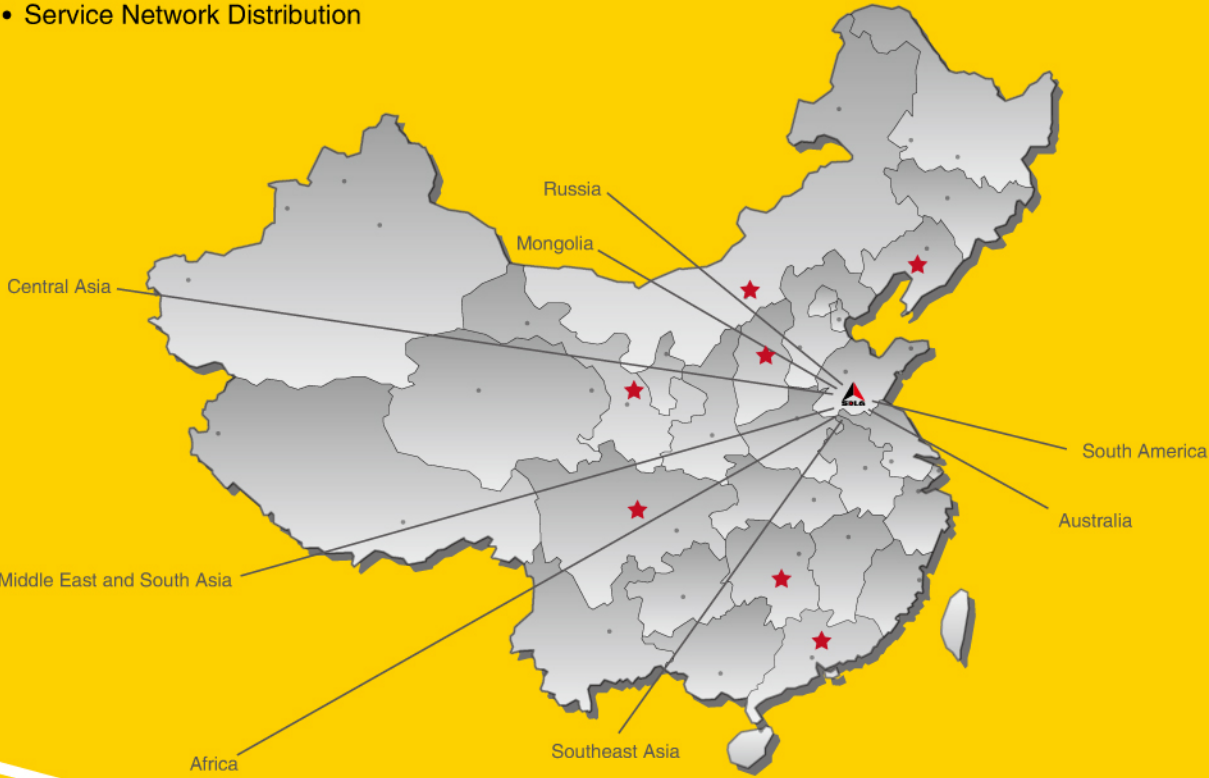


• Key Performance and Component Parameters of Products – Standard Configuration

Items	Parameters	Items	Parameters
Operating Weight of Whole Equipment	24300 kg	Rated Power	134 kW
Standard Capacity of Bucket	1.2 m³	Rated Revolution Speed	2000 r/min
Maximum Excavation Force	176 kN	Hydraulic System	Double pump constant power negative flow control
Swiveling Speed	11.3 r/min	Maximum Flow	2×230+20 L/min
Travel Speed	3.2/5.5 km/h	Operating Pressure	330/350 kgf/cm²
Climbing Capacity	35°	Rotary Device	Hydraulic driven inner gear single-row ball bearing
Outer Dimension	10130×3190×3040 mm	Travel System	
Engine		Track Shoe Width	600 mm
Model	BF 6 M 1013	Average Ground Pressure	48.5 kPa
Type	Four-stroke, booster, inter-cooled	Fuel Capacity	
Cylinders – Cylinder Diameter × Journey	6-106×130 mm	Fuel Tank	280 L
Maximum Torque	727 N·m	Hydraulic Tank	320 L

Above parameters are subject to change without notice. The illustration in this material is not necessary to be the standard model of this equipment.

• Service Network Distribution



Above parameters are subject to change without notice. The illustration in this material is not necessary to be the standard model of this equipment.

Shandong Lingong Construction Machinery Co., Ltd

Address: Lingong Industrial Park, Linyi Economic and Technical Development Zone, Shandong Province
Tel: 0086-539-8785523 (domestic) 0086-531-66590966 (international)
Fax: 0086-539-8785524 (domestic) 0086-531-66590959 (international)
Customer Service Tel: 0086-539-8785800

Reliability in Action

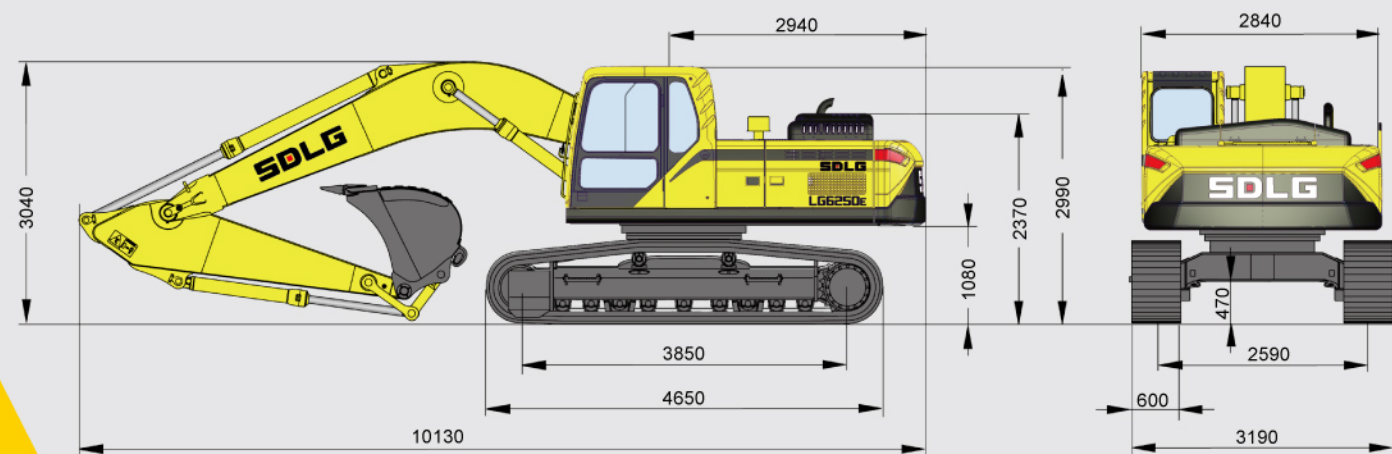


LG6250E
Hydraulic Excavator



LG6250E

LG 6250E Hydraulic Excavator – Standard Configuration



Cab

The cab is spacious, sealed and effective sound insulation, and is equipped with the three-side shade nets, ergonomic seat and automatic air conditioner with the two-stage air filter, to provide the comfort riding environment.



Hydraulic System

It takes the dual-pump constant power negative flow control hydraulic system and is provided with the automatic sensing operating mode and the controllable single-pump/dual-pump fuel supply mode, so that the single or complicated action and crushing operation provides high operating efficiency and excellent action coordination, extremely high control accuracy and excellent fuel economy.



Electrical System

The Lingong EECU, VECU and IECU control system with GPS enables the whole equipment to meet different operating conditions in several operating modes, and it is energy efficient, provided with the color LCD monitor and set with the self-test, monitoring and urgent failure alarm, to improve the human-machine interface (HMI) level.



Engine

The turbocharged inter-cooled engine with the second-generation electronic control governor system EMR2 of Deutz features the high torque, low fuel consumption, low emission and low noise. Furthermore, it is set with the SERDIA failure detection interface and the remotely installed oil filter and diesel fuel filter, to facilitate the overhauling and servicing of the engine.



Travel Parts

The whole equipment provides powerful lifting force and excavation force and is equipped with the enhanced X-shape underframe with longer track and wider chassis. The whole equipment provides higher stability, and is equipped with the enhanced boom and bucket rod. Hence, the whole equipment provides the ability to meet tough working conditions.



The Lingong excavator series product is specially developed by domestic and foreign experts on the basis of the advanced design and manufacturing technologies of Volvo, to meet various tough working conditions. This series product takes the high-end configuration, global sourcing and elaborate manufacturing, to ensure the high reliability and high return on investment of the product.

