

dealer contact  
details →

Drillcon (Paj) Pvttd  
Email : vikram.mehta@drillcon.in  
Mobile:+91982904067



### Customer service is first priority

SDLG focuses on delivering outstanding customer service throughout a machine's life cycle. Its integrated service management system monitors and analyzes the machine's functions to ensure that it is working at optimum capacity, while service alerts notify customers about forthcoming maintenance checks. SDLG's attention to detail is one of the ways it continues to be the industry's No. 1 in terms of customer service satisfaction.

### Value-added service

SDLG's aftercare promise guarantees high quality service and offers experts who are on-hand to answer any questions or to solve problems. SDLG's service team uses advanced technology to support its maintenance checks in the field. Moreover, it aims to work with customers to define an efficient business solution.

### Global service network

SDLG's worldwide service and spare parts network provides fast, efficient and professional round-the-clock service, anytime, anywhere. SDLG exceeds customers' expectations.



[www.sdlg.com](http://www.sdlg.com)



Reliability in Action



**L933**  
Wheel Loader



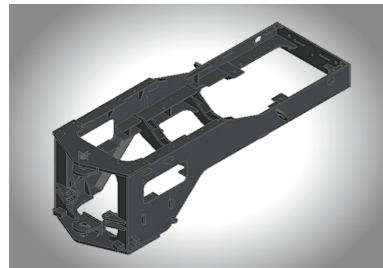


# L933 Wheel Loader

L933 issuitable for bulk materials, with high cost-performance, large breakout force, small turning radius, flexible operations, and is widely used in the construction sites, aggregate plants, and lumber yards.

## Reliable

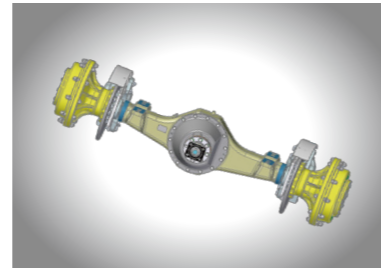
The enhanced front and rear frames are proved by 100,000-cycle reliability test. The lower hinge joint is upgraded from knuckle bearings to tapered roller bearings to prolong the life by 50%. The wheelbase of the rear frame is extended to enhance the stability and tipping load of the whole machine.



Adopted mature and reliable fixed shaft transmission, with smooth gearshift, high reliability, and extended life.



Adopted enhanced drive axle with optimized gear design, improve the gear reliability by 20%.



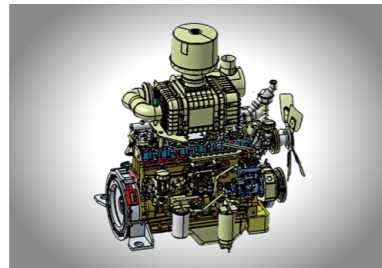
## Reliable

Adopted load-sensing full hydraulic steering system, with easy operation, accurate steering, and high reliability.



## Convenience

The engine is fitted with standard malfunction diagnostic interface, ease to check and maintain.



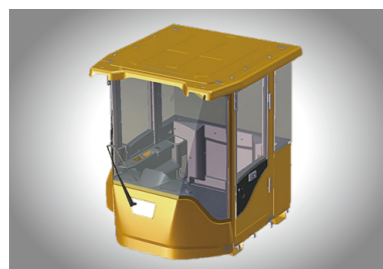
The transmission filter is outside, easy to maintain and replace.

The upturning engine hood, easy to repair and maintain.

The instruments can display the engine malfunctions for real-time, with high human-machine interactivity.

## Comfort

The spacious and bright cab and the seat of large folding angle improve the driver's comfort. Spacious and bright cap, with large folding angle seat, improve the driver's comfort.

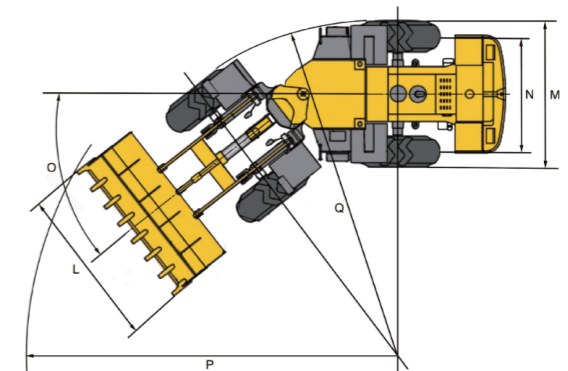
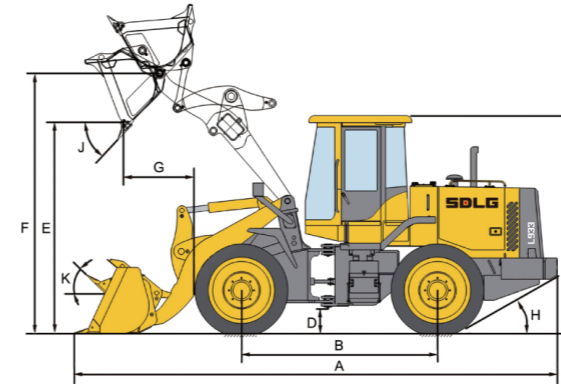


Adopted integrated stepping panel, with reasonable layout, high definition and brightness.



The optimized air conditioning system remarkably improves the cooling performance.

## Main performance and parts specifications



Item	Specifications
<b>Overall dimension</b>	
L×W×H(A×L×C)	7100×2520×3240 mm
Wheel base(B)	2850mm
Min. ground clearance(D)	375 mm
Max. dumping height(E)	2950 mm
Dumping distance(G)	1050 mm
Dumping angle(J)	-45°
Overall width ( outside of rear wheel ) (M)	2845 mm
wheel tread(N)	2250 mm
steering angle(O)	36°
horizontal crossing radius(P)	6180mm
min.turning radius(Q)	5375mm
<b>Overall parameters</b>	
Bucket capacity	1.8m <sup>3</sup>
Rated load	3000 kg
operating weight	10150 kg
Max.tractive force	≥96 kN
Max.breakout force	≥96 kN
<b>Engine</b>	
Model	WP6G125E331
Type	Inline, Water-cooled, four-stroke, direct injection
Rated power	92 kW
Rated speed	2300 r/min
Engine displacement	6750 ml
Cylinder bore/stroke	105/130 mm
Max.torque	980
Emission standard	GB20891-2014

Item	Specifications
Min.fuel-consume ratio	220 g/kw.h
<b>Transmission system</b>	
Torque converter	Single-stage three-element hydraulic torque converter
Transmission type	Fixedshaft power shift
Gears	Forward 4 reverse 2
Speed at forward gear I	0 ~ 8 km/h
Speed at forward gear II	0 ~ 14 km/h
Speed at forward gear III	0 ~ 27 km/h
Speed at forward gear IV	0 ~ 41 km/h
Speed at reverse gear I	0 ~ 10km/h
Speed at reverse gear II	0 ~ 32 km/h
<b>Hydraulic system of working device</b>	
Type	Mechanical/manual control
total time	≤9.0 s
<b>Brake system</b>	
Service brake type	Air over hydraulic caliper disc brake
Parking brake type	Manual , caliper disc type
<b>Steering system</b>	
Type	Load sensing full hydraulic articulated steering
System pressure	14 MPa
<b>Fill Capacity</b>	
Fuel	160 L
Hydraulic oil	130L
Engine	18L
Transmission	45 L
Drive axle	Forward 18L+reverse 16L
Braking system	4 L