

KATO CES

Zero Tail Swing Mini Excavator

V Four HD25

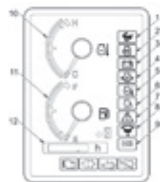


Comfortable EVOLUTION

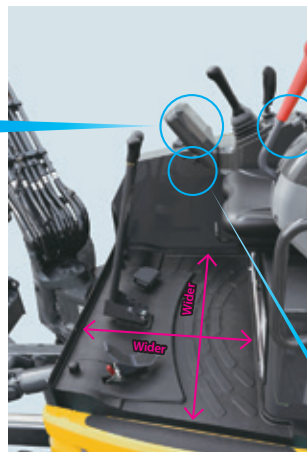
COMFORTABLE OPERATOR ROOM AND EASY MANIPULATION



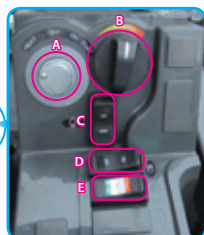
• Easily visible monitor



- 1 Travel speed indicator
- 2 Glow indicator
- 3 Battery charge warning indicator
- 4 Engine oil pressure warning indicator
- 5 Water temperature warning indicator
- 6 Auto idle indicator
- 7 Control lock warning indicator
- 8 Water-separator warning indicator
- 9 ECO mode indicator
- 10 Water temperature gauge
- 11 Fuel gauge
- 12 Hour meter



• Leg room enlarged by 20%
• Cabin room enlarged by 25%
*In comparison with our former model



• Centralized switches (Right console box)

- A Engine starter switch
- B Throttle dial
- C Auto Idle selector switch
- D Light switch
- E Work mode selector switch



• Spare power port (12V 10A)

High Performance EVOLUTION

HIGH POWER DIGGING AND QUICK RESPONSE

- Digging force increased by 10%
*In comparison with our former model
- Quickly responsive 4-pump system

EASY MAINTENANCE

- Large covers for easier access



• Right hand cover



• Engine room

Hydraulic tank with air breather



Large fuel filter

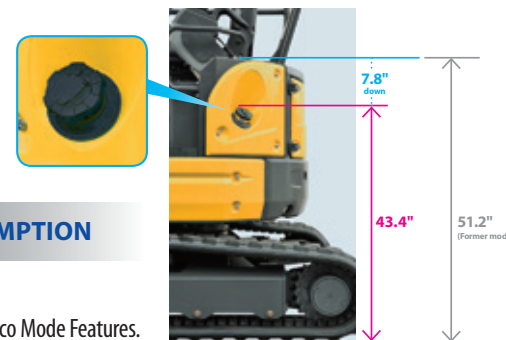


Water-separator



* The warning indicator turns on if water is collected up to the specified level.

EASY FUEL REFILLING



LOW FUEL CONSUMPTION

24% FUEL SAVINGS

From the New Auto Idle and Eco Mode Features.
*In comparison with our former model

Refilling position (unit : inches)

Safety EVOLUTION

WORLD-STANDARD SAFETY

- ROPS/TOPS Compliance Operator Cab and Canopy
- ROPS/TOPS Canopy (std.)
- ROPS/ TOPS Cab (opt.)
- FOPS Cab (opt.)



ROPS/TOPS Cab (opt.)

ERROR-PREVENTION

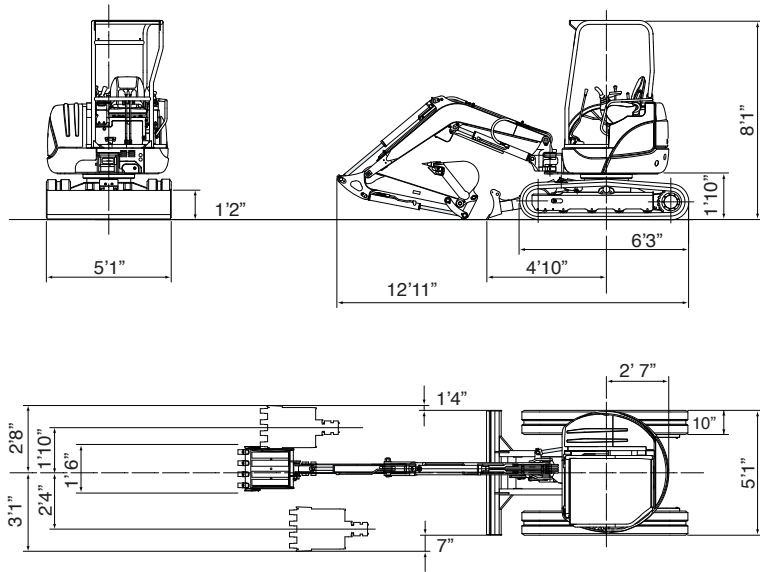
- All-lever lock
- Neutral engine-start
- Auto-parking brake in swing & traction motors



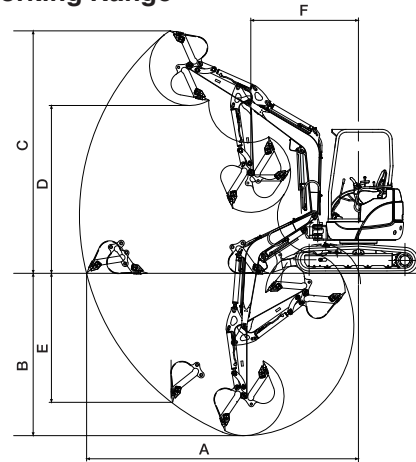
All operations are blocked when the lever is raised.



■ Dimensions



■ Working Range

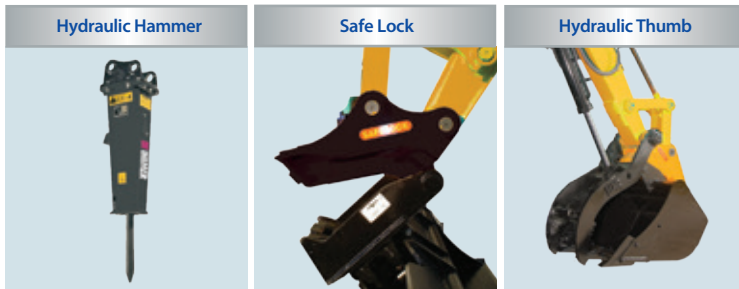


| 4-Post/Cabin | |
|-------------------------------|-------|
| A Max. digging radius | 14'9" |
| B Max. digging depth | 8'3" |
| C Max. digging height | 13'3" |
| D Max. dumping height | 9' |
| E Max. vertical digging depth | 6'5" |
| F Min. front turning radius | 6'4" |
| At right boom swing | 4'11" |

■ 25V4 Specifications

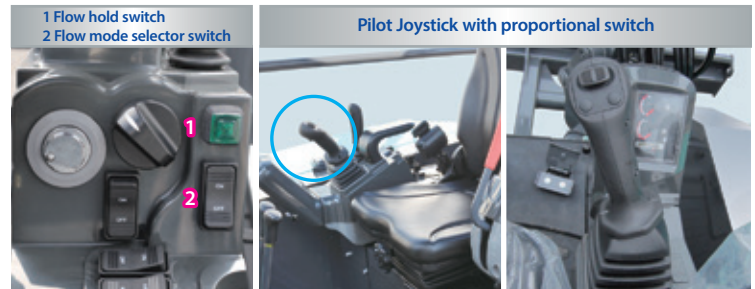
| Performance | | Boom swing system | |
|---------------------------------------|-------------------------------|---------------------------------------|---|
| Bucket capacity | 2.8 cu. ft. | Type | Boom offset with hydraulic cylinder |
| Bucket width | 18" | Swing angle (L/R) | 50°/80° |
| Operating weight: 4-Post (Cabin) | 5,955 lbs. (6085 lbs.) | Hydraulic system | |
| Transportation weight: 4-Post (Cabin) | 5,750 lbs. (5,880 lbs.) | Pressure | 3,000 psi |
| Swing speed | 10 min ⁻¹ | Pump • type/hydraulic flow | 2 Piston/2 Gear • 7.9 gpm/min x 2 + 5.2 gpm |
| Travel speed (low/high) | 1.5/2.8 mph | Dozer blade | |
| Gradeability | 30° | Size | 61"x14.4" |
| Ground pressure | 3.9 psi | Lift above ground / Drop below ground | 14.6"/15.4" |
| Max bucket digging force | 5,698 lbs. | Max auxiliary flow | |
| Engine | | 1st line | 12.7 gpm |
| Model | KUBOTA D1305-E4B Tier 4 Final | | |
| Rated output | 23.6 hp/2400 rpm | | |
| Fuel tank capacity | 11.08 gallons | | |

Optional Attachments:



Photographs may differ in some cases from actual objects. Specifications are subject to change without notice due to technical improvements or modifications.

Features:



COMPACT EXCAVATOR SALES, LLC
 400 Production Court • Elizabethtown, KY 42701
 Phone: 800.583.1447 • Fax: 270.737.0419
 WWW.KATOCES.COM