



# *Truck Mounted Platforms*





The facility of Pegognaga (Mantua) - almost 15 thousand square metres surface, of which more than 4,700 covered, with 35 employees - manages the Aerial Platforms product lines consisting of Scissor Lifts, Articulated Boom Lifts and the new line of Truck Mounted Platforms.

The Business Unit IMER Access, created following the acquisition by IMER Group of the ITECO assets in 2009, has enabled the Group to further expand its product range in the lifting industry.

The new line of Truck Mounted Platforms includes 7 models which offer different solutions to satisfy all lifting requirements: from civil installation and maintenance, to industrial and urban applications.

IMER Group has always pursued a logic of "focusing to the market" and flexibility in meeting the demand that, through constant improvement of products and processes, enables us to propose an exclusive and specific product range able to meet the various requirements of the market, successfully combining the binomial "quality and reliability".

**P 13 T 7**

pag. **1**



**P 14 T 9**

pag. **2**



**P 16 T 9**

pag. **3**



**P 18 T 12**

pag. **4**



**P 21 T 10**

pag. **5**



**P 19 AS 10**

pag. **6**



**P 23 AS 11**

pag. **7**



**Useful Addresses**

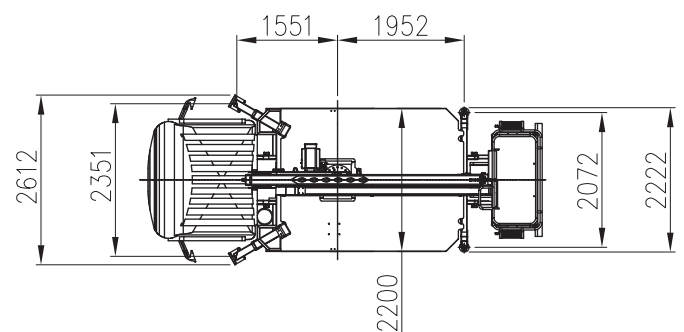
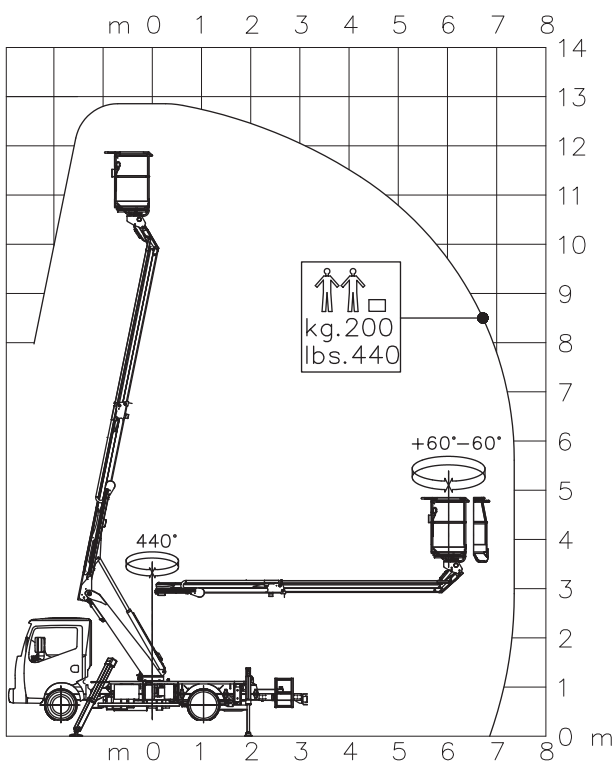
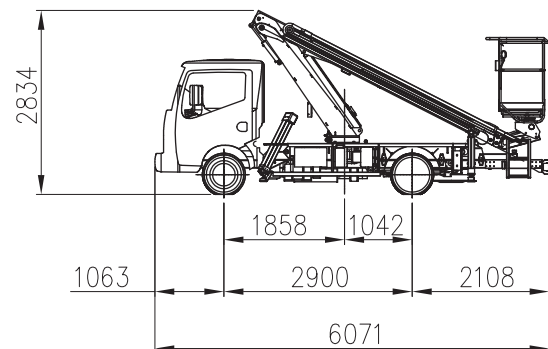
pag. **8**

## Standard Equipment

- Hydraulic controls
- Priority of commands from the basket
- Attachment points in the basket for safety belts
- Cylinder holding safety valve
- Hand pump for emergency descent
- Overload sensor on the basket
- Acoustic alarm for PTO engaged
- Filter in pressure
- Engine start / stop command from the basket
- Limit switch stabilizers to the ground
- Basket rotation: 60 ° right + 60 ° left
- Basket hydraulic leveling
- Hour meter
- Rotating beacon
- No. 2 helmets
- No. 2 safety belts
- No. 2 pairs gloves

## Optionals

- Outlet for air / water lines to basket
- Socket for 230V line to basket
- Tool box 500x400x300 mm
- Nr. 4 Blocks for stabilization and el. insulation
- No. 2 Racks for blocks
- Emergency lowering electropump 12/24 V
- Auxiliary electropump 230V/50Hz
- Directional white light
- Foldable Side boards h.100 mm
- Foldable Side boards h.200 mm
- Fixed Side boards h.100 mm
- Fixed Side boards h.200 mm
- Personalized paint
- Insulated basket 1,000V
- Ladder & Mast carrier, (front/rear) removable
- Tilt sensor with an audible alarm
- Fiberglass basket



Stowed height	mm	2834
Overall length	mm	6071
Overall width	mm	2200
Working height	m	12,80
Max working outreach	m	07,40 m (200 kg)
Turret rotation		440°
Platform size	mm	1400 x 700 x 1180 h
Maximum loading capacity	kg	200
Number of persons		1-2
System pressure	bar	200
Oil tank capacity	L	40
Hydraulic pump	L	12

# P 14 T 9

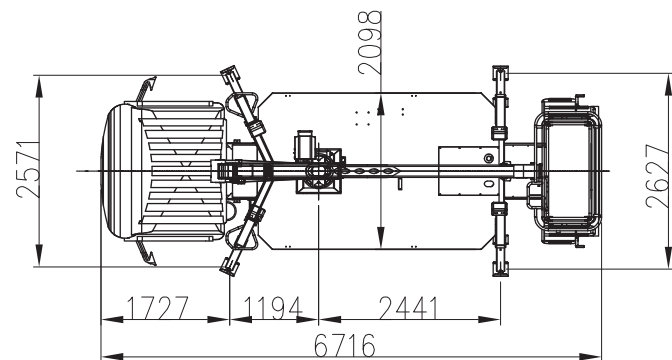
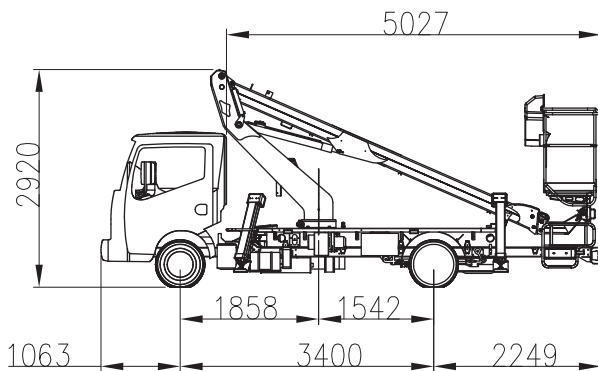


## Standard Equipment

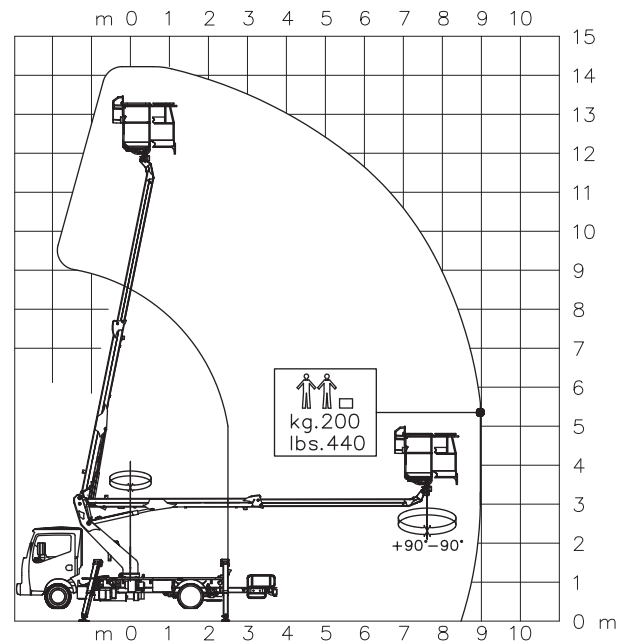
- Hydraulic controls
- Priority of commands from the basket
- Attachment points in the basket for safety belts
- Cylinder holding safety valve
- Hand pump for emergency descent
- Overload sensor on the basket
- Acoustic alarm for PTO engaged
- Filter in pressure
- Engine start / stop command from the basket
- Limit switch stabilizers to the ground
- Basket rotation: 90 ° right + 90 ° left
- Basket hydraulic leveling
- Hour meter
- Rotating beacon
- No. 2 helmets
- No. 2 safety belts
- No. 2 pairs gloves
- Outlet for air / water lines to basket
- Socket for 230V line to basket
- Tool box 500x400x300 mm
- Nr. 4 Blocks for stabilization and el. insulation
- No. 2 Racks for blocks

## Optionals

- Emergency lowering electropump 12/24 V
- Auxiliary electropump 230V/50Hz
- Directional white light
- Foldable Side boards h.100 mm
- Foldable Side boards h.200 mm
- Fixed Side boards h.100 mm
- Fixed Side boards h.200 mm
- Personalized paint
- Insulated basket 1,000V
- Ladder & Mast carrier, (front/rear) removable
- Tilt sensor with an audible alarm
- Fiberglass basket



Stowed height	mm	2920
Overall length	mm	6716
Overall width	mm	2100
Working height	m	14,20
Max working outreach	m	09,00 m (200 kg)
Turret rotation		360° continuous
Platform size	mm	1400 x 700 x 1180 h
Maximum loading capacity	kg	200
Number of persons		1-2
System pressure	bar	200
Oil tank capacity	L	40
Hydraulic pump	L	12

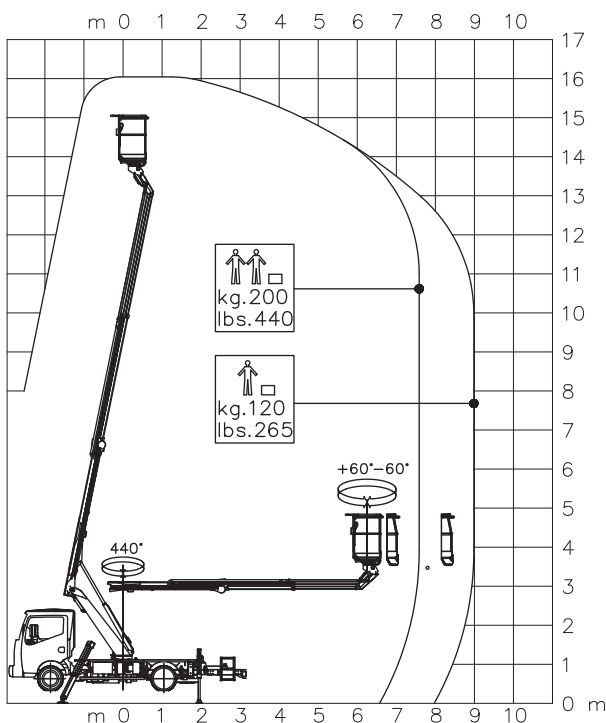
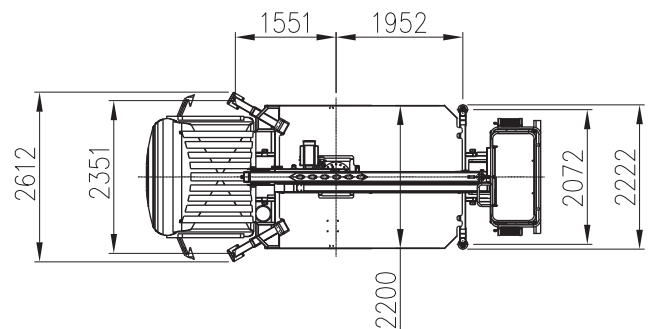
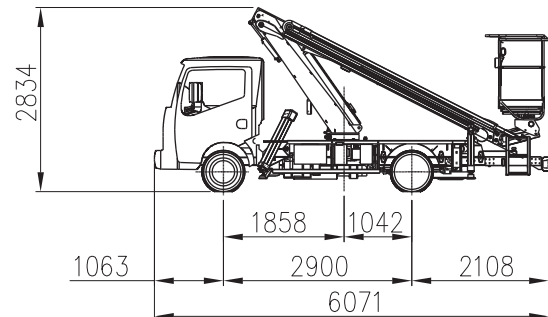


## Standard Equipment

- Hydraulic controls
- Priority of commands from the basket
- Attachment points in the basket for safety belts
- Cylinder holding safety valve
- Hand pump for emergency descent
- Overload sensor on the basket
- Anti-Overturning device (moment control)
- Acoustic alarm for PTO engaged
- Filter in pressure
- Engine start / stop command from the basket
- Limit switch stabilizers to the ground
- Basket rotation: 60 ° right + 60 ° left
- Basket hydraulic leveling
- Hour meter
- Rotating beacon
- No. 2 helmets
- No. 2 safety belts
- No. 2 pairs gloves

## Optionals

- Outlet for air / water lines to basket
- Socket for 230V line to basket
- Tool box 500x400x300 mm
- Nr. 4 Blocks for stabilization and el. insulation
- No. 2 Racks for blocks
- Emergency lowering electropump 12/24 V
- Auxilliary electropump 230V/50Hz
- Directional white light
- Foldable Side boards h.100 mm
- Foldable Side boards h.200 mm
- Fixed Side boards h.100 mm
- Fixed Side boards h.200 mm
- Personalized paint
- Insulated basket 1,000V
- Ladder & Mast carrier, (front/rear) removable
- Tilt sensor with an audible alarm
- Fiberglass basket



Stowed height	mm	2834
Overall length	mm	6071
Overall width	mm	2200
Working height	m	16,00
Max working outreach		09,00 m (120 kg)
Turret rotation		440°
Platform size	mm	1400 x 700 x 1180 h
Maximum loading capacity	kg	200
Number of persons		1-2
System pressure	bar	200
Oil tank capacity	L	40
Hydraulic pump	L	12

# P 18 T 12

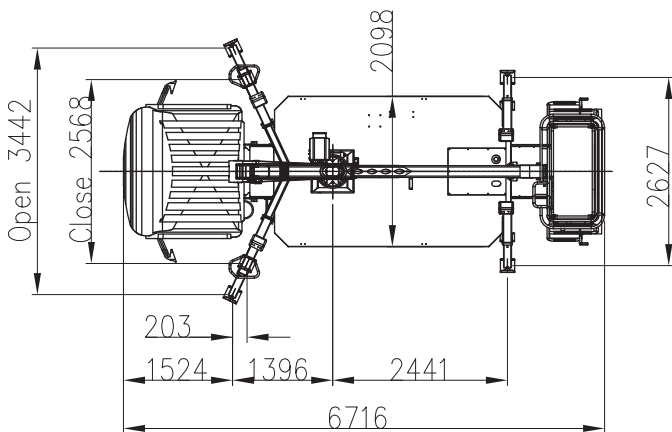
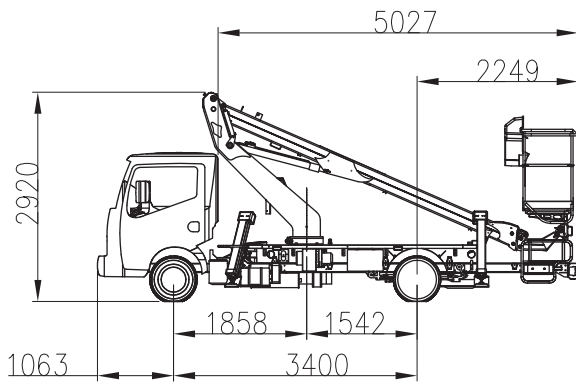


## Standard Equipment

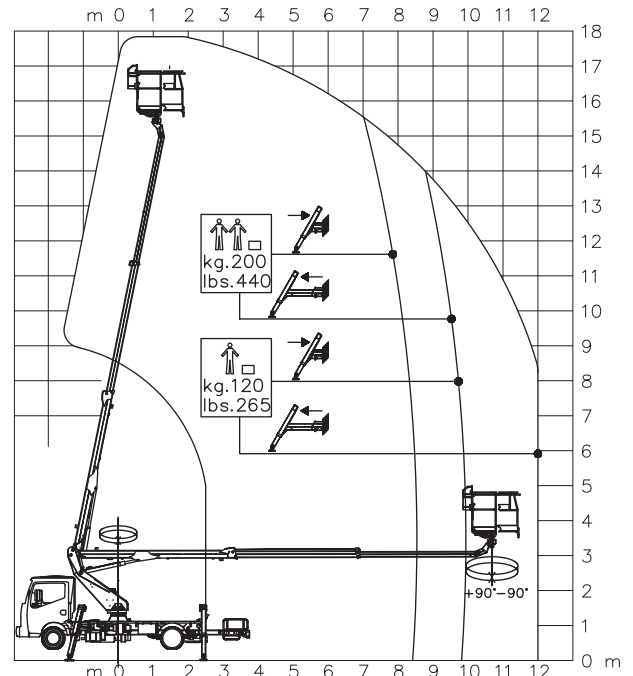
- Hydraulic controls
- Priority of commands from the basket
- Attachment points in the basket for safety belts
- Cylinder holding safety valve
- Hand pump for emergency descent
- Overload sensor on the basket
- Anti-Overturning device (moment control)
- Acoustic alarm for PTO engaged
- Filter in pressure
- Engine start / stop command from the basket
- Limit switch stabilizers to the ground
- Basket rotation: 90 ° right + 90 ° left
- Basket hydraulic leveling
- Hour meter
- Rotating beacon
- No. 2 helmets
- No. 2 safety belts
- No. 2 pairs gloves
- Outlet for air / water lines to basket
- Socket for 230V line to basket
- Tool box 500x400x300 mm
- Nr. 4 Blocks for stabilization and el. insulation
- No. 2 Racks for blocks

## Optionals

- Emergency lowering electropump 12/24 V
- Auxiliary electropump 230V/50Hz
- Directional white light
- Foldable Side boards h.100 mm
- Foldable Side boards h.200 mm
- Fixed Side boards h.100 mm
- Fixed Side boards h.200 mm
- Personalized paint
- Insulated basket 1,000V
- Ladder & Mast carrier, (front/rear) removable
- Tilt sensor with an audible alarm
- Fiberglass basket



Stowed height	mm	2920
Overall length	mm	6716
Overall width	mm	2100
Working height	m	17,50
Max working outreach	m	12,00 m (120 kg)
Turret rotation		360° continuous
Platform size	mm	1400 x 700 x 1180 h
Maximum loading capacity	kg	200
Number of persons		1-2
System pressure	bar	200
Oil tank capacity	L	40
Hydraulic pump	L	12

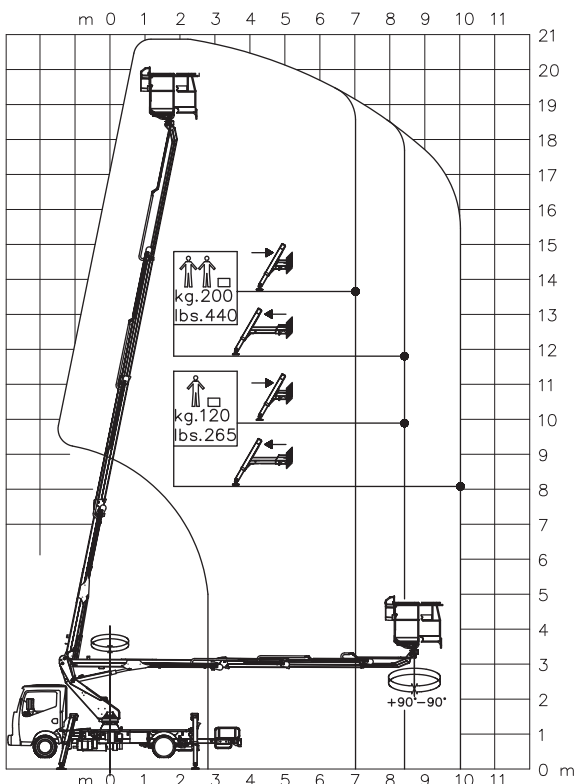
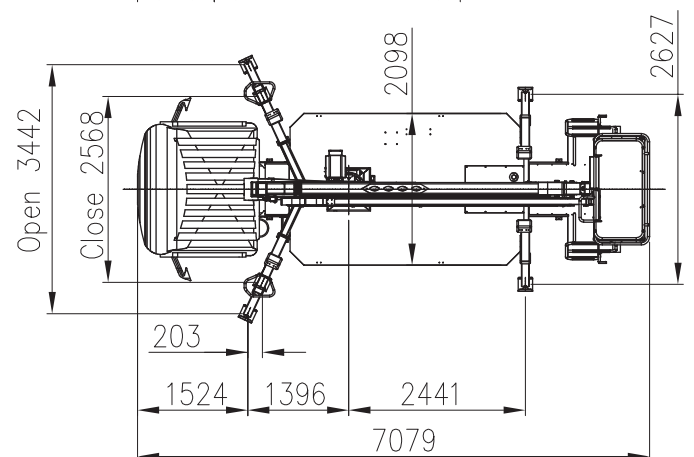
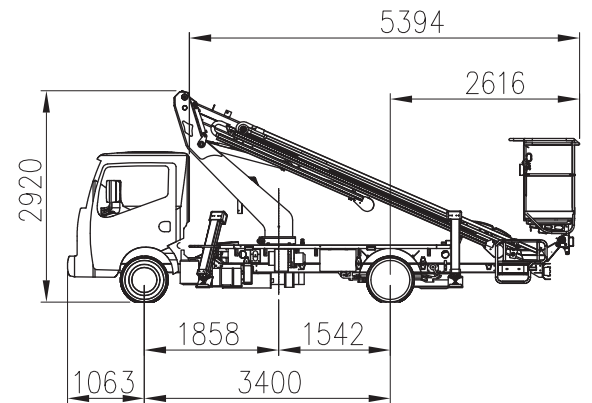


## Standard Equipment

- Hydraulic controls
- Priority of commands from the basket
- Attachment points in the basket for safety belts
- Cylinder holding safety valve
- Hand pump for emergency descent
- Overload sensor on the basket
- Anti-Overturning device (moment control)
- Acoustic alarm for PTO engaged
- Filter in pressure
- Engine start / stop command from the basket
- Limit switch stabilizers to the ground
- Basket rotation: 90 ° right + 90 ° left
- Basket hydraulic leveling
- Hour meter
- Rotating beacon
- No. 2 helmets
- No. 2 safety belts
- No. 2 pairs gloves
- Outlet for air / water lines to basket
- Socket for 230V line to basket
- Tool box 500x400x300 mm
- Nr. 4 Blocks for stabilization and el. insulation
- No. 2 Racks for blocks

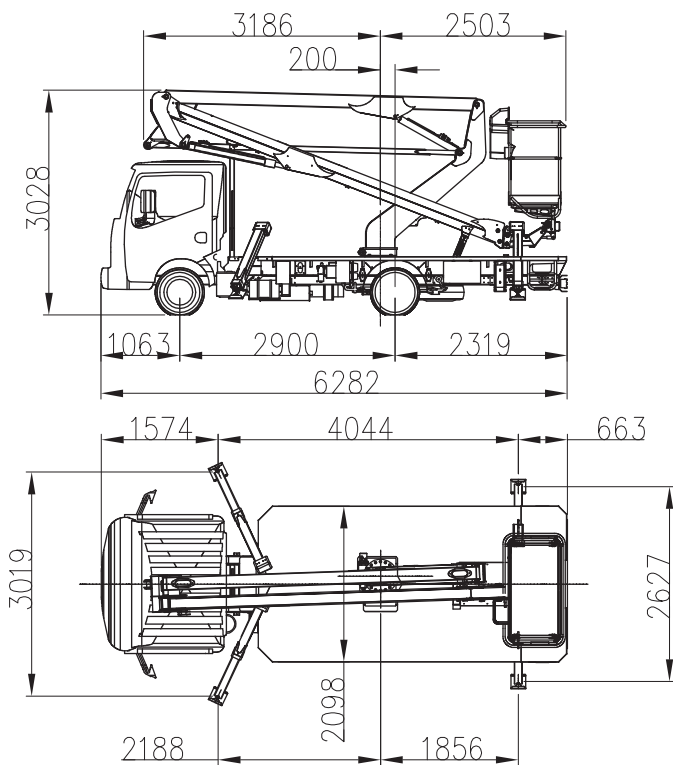
## Optionals

- Emergency lowering electropump 12/24 V
- Auxiliary electropump 230V/50Hz
- Directional white light
- Foldable Side boards h.100 mm
- Foldable Side boards h.200 mm
- Fixed Side boards h.100 mm
- Fixed Side boards h.200 mm
- Personalized paint
- Insulated basket 1,000V
- Ladder & Mast carrier, (front/rear) removable
- Tilt sensor with an audible alarm
- Fiberglass basket



Stowed height	mm	2920
Overall length	mm	7079
Overall width	mm	2100
Working height	m	20,90
Max working outreach	m	10,00 m (120 kg)
Turret rotation		360° continuous
Platform size	mm	1400 x 700 x 1180 h
Maximum loading capacity	kg	200
Number of persons		1-2
System pressure	bar	200
Oil tank capacity	L	40
Hydraulic pump	L	12

# P 19 AS 10



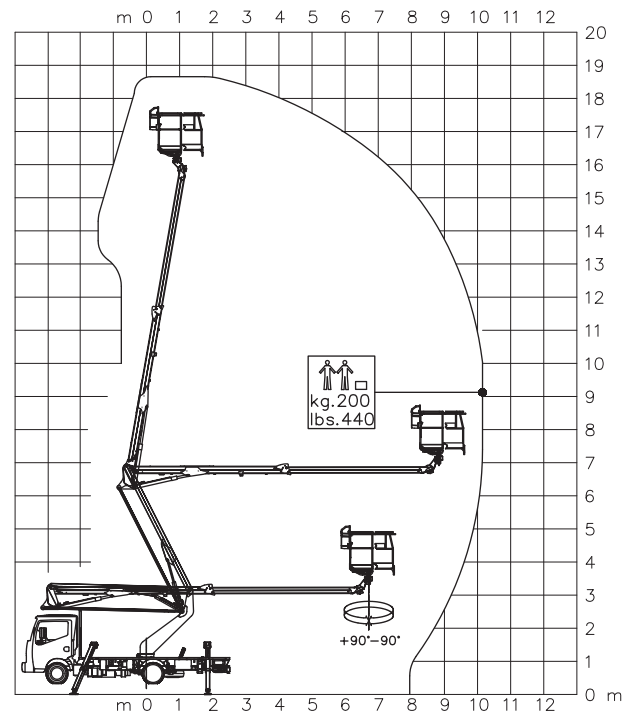
Stowed height	mm	3028
Overall length	mm	6282
Overall width	mm	2100
Working height	m	18,70
Max working outreach	m	10,00 m (200 kg)
Turret rotation		440°
Platform size	mm	1400 x 700 x 1180 h
Maximum loading capacity	kg	200
Number of persons		1-2
System pressure	bar	200
Oil tank capacity	L	40
Hydraulic pump	L	12

## Standard Equipment

- Hydraulic controls
- Priority of commands from the basket
- Attachment points in the basket for safety belts
- Cylinder holding safety valve
- Hand pump for emergency descent
- Overload sensor on the basket
- Acoustic alarm for PTO engaged
- Filter in pressure
- Engine start / stop command from the basket
- Limit switch stabilizers to the ground
- Basket rotation: 90 ° right + 90 ° left
- Basket hydraulic leveling
- Hour meter
- Socket for 230V line to basket
- Tool box 500x400x300 mm
- Rotating beacon
- Nr. 4 Blocks for stabilization and el. insulation
- No. 2 Racks for blocks
- No. 2 helmets
- No. 2 safety belts
- No. 2 pairs gloves

## Optionals

- Outlet for air / water lines to basket
- Emergency lowering electropump 12/24 V
- Auxiliary electropump 230V/50Hz
- Directional white light
- Foldable Side boards h.100 mm
- Foldable Side boards h.200 mm
- Fixed Side boards h.100 mm
- Fixed Side boards h.200 mm
- Personalized paint
- Insulated basket 1,000V
- Ladder & Mast carrier, (front/rear) removable
- Tilt sensor with an audible alarm
- Fiberglass basket





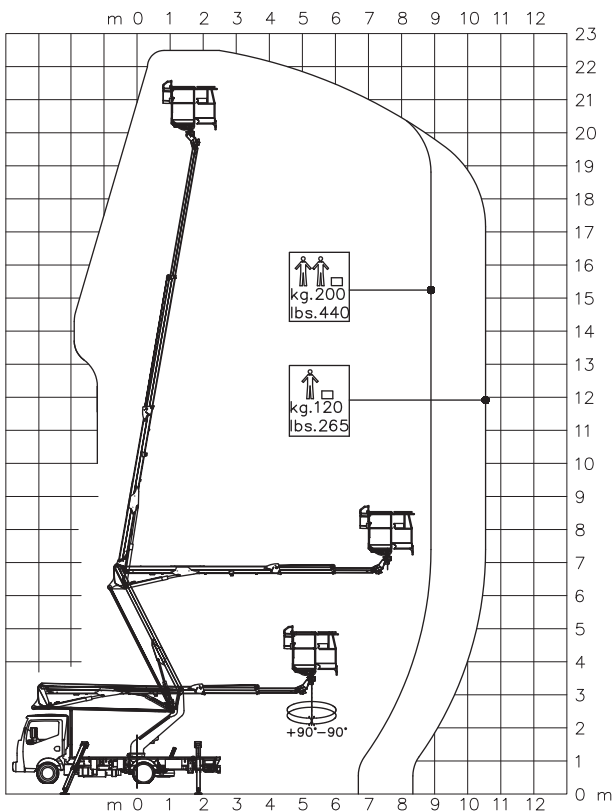
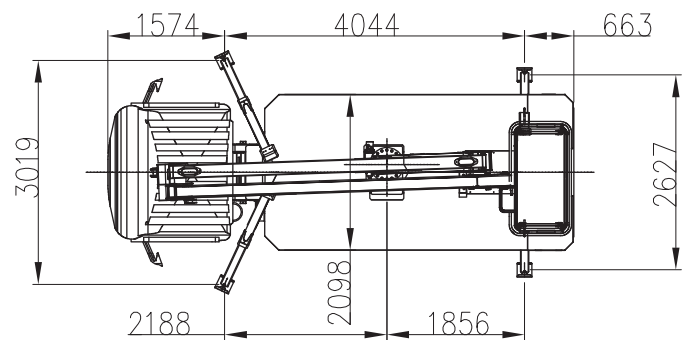
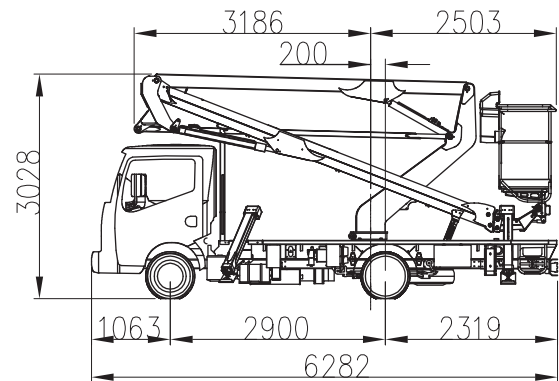
## Standard Equipment

- Hydraulic controls
- Priority of commands from the basket
- Attachment points in the basket for safety belts
- Cylinder holding safety valve
- Hand pump for emergency descent
- Overload sensor on the basket
- Anti-Overturning device (moment control)
- Acoustic alarm for PTO engaged
- Filter in pressure
- Engine start / stop command from the basket
- Limit switch stabilizers to the ground
- Basket rotation: 90 ° right + 90 ° left
- Basket hydraulic leveling
- Hour meter
- Socket for 230V line to basket
- Tool box 500x400x300 mm
- Rotating beacon
- Nr. 4 Blocks for stabilization and el. insulation
- No. 2 Racks for blocks
- No. 2 helmets
- No. 2 safety belts
- No. 2 pairs gloves



## Optionals

- Outlet for air / water lines to basket
- Emergency lowering electropump 12/24 V
- Auxilliary electropump 230V/50Hz
- Directional white light
- Foldable Side boards h.100 mm
- Foldable Side boards h.200 mm
- Fixed Side boards h.100 mm
- Fixed Side boards h.200 mm
- Personalized paint
- Ladder & Mast carrier, (front/rear) removable
- Tilt sensor with an audible alarm
- Fiberglass basket



Stowed height	mm	3028
Overall length	mm	6282
Overall width	mm	2100
Working height	m	22,50
Max working outreach	m	10,50 m (120 kg)
Turret rotation		440°
Platform size	mm	1400 x 700 x 1180 h
Maximum loading capacity	kg	200
Number of persons		1-2
System pressure	bar	200
Oil tank capacity	L	40
Hydraulic pump	L	12

---

## **IMER International S.p.A.**

Headquarters

Via Salceto, 53/55 - 53036 Poggibonsi (Siena) Italy

Tel. +39 0577 97341 - Fax +39 0577 983304

## **Business Unit IMER Access**

Via San Francesco d'Assisi, 8 - 46020 Pegognaga (MN) Italy

Ph. +39 0376 554011 - Fax +39 0376 559855

## **BUSINESS UNIT DIRECTION**

Paolo Pianigiani: *B.U. Director*

p.pianigiani@imergroup.com

## **MARKETING & SALES**

Marco Maiani: *Marketing*

Ph. +39 0577 973449 – marco.maiani@imerint.it

Fax +39 0577 983304

Claudia Ghirelli: *Sales & Logistics (Italy-Export)*

Ph. +39 0376 5540202 - c.ghirelli@imerint.it

Fax +39 0376 559855

## **AFTER SALE SERVICE & SPARE PARTS**

Matteo Iori: *After Sale Service Manager*

Ph. +39 0376 5540225 - m.iori@imerint.it

Fax +39 0376 5540206

---





**IMER International S.p.A.**  
**Business Unit IMER Access**  
Via San Francesco d'Assisi, 8  
46020 Pegognaga (MN) - Italy  
Ph. +39 0376 554011  
Fax +39 0376 559855  
[www.imergroup.com](http://www.imergroup.com)