



POWER TO LIFT

HMF 70200K-RCS

Product flyer



Optimized reach and utilization of space

The 70200K crane is designed with extra reach and with optimized space on the truck body. It comes with several options, which makes it tailorable to your needs. This design provides for excellent utilization of your truck body without compromising with the reach and strength of your crane. The crane is furthermore designed with internal hose routing and in a service-friendly manner to minimise external damage. All which ensure a long lifespan of your crane as well as low costs of ownership.

Why choose the 70200K?

- The smallest space requirements of a crane in its category
- The OK boom system provides for maximum reach and utilization of the truck body
- Precise and user-friendly operation makes the crane manoeuvrable in difficult conditions

PERFORMANCE	70200K2-RCS	70200K3-RCS	70200K4-RCS	70200K5-RCS	70200K6-RCS
Load moment (tm)	62.2	60.7	60.0	58.3	58.2
Hydraulic reach (m)	8.3	10.4	12.4	14.7	17.0
Weight excl. stabilizers (kg)	4465	4765	5065	5335	5575
Weight of stabilizers, standard (kg)	925	925	925	925	925
Lift-to-weight ratio	11.5	10.7	10.0	9.3	9.0
Continuous slewing area	∞	∞	∞	∞	∞
Slewing torque (kgm)	7142	7142	7142	7142	7142
Working pressure (bar)	375	375	375	375	375
GEOMETRY					
Height above mounting surface (mm)	2470	2470	2470	2470	2470
Width, folded (mm)	2500	2500	2500	2500	2500
Length of crane, no extra valves (mm)	1340	1340	1340	1340	1340
Over-bending on crane (°)	14	14	14	14	14
Over-bending on fly-jib (°)	-	-	-	-	19

BASIC FEATURES

Electronic speed adaptation system, HDL-D/HD5
Progressive Crane Control (PCC)
Priority Flow Control (PFC)
Dual Power Plus link arm system
Two slewing gears
Proportional control valve PVG 32
Radio remote control of stabilizer beams and stabilizer legs on crane
Internal hose routing

SELECTED OPTIONS

SPECIAL OPTIONS

Fly-jib 1200 with up to 6 extensions
Power hoist HMF 3200 kg
Personnel basket

STABILITY AND SAFETY

Electronic Vehicle Stability (EVS)
AutoSwitch (ASW)
Monitoring of stabilizer legs down (CYL)
Monitoring of stabilizer beams fully extended and stabilizer legs down (2CYBEL)
Cabin Anti-Crash (CAC)
Alarm flash on stabilizer legs

EXTRA VALVES

2 extra valves
Extra valves in hose guides
Extra valves in hose reels, externally
Multi-coupling for 2 extra valves

STABILIZER BEAMS AND LEGS

Hydraulic or manual stabilizer beams 8.4m
Hydraulic swing-up stabilizer legs
Footplate with ball joint on stabilizer legs

HYDRAULICS

Oil tank 320 l mounted on the crane
Oil tank 390 l mounted on the crane
Oil cooler with temperature monitoring, q=0.4 kW/°C
Up to 12 radio remote controlled available stabilizer functions
1 radio remote controlled available proportional function (PVG32)

CONTROL

Power radio control box with colour display

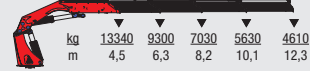
70200K2-RCS



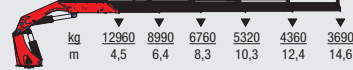
70200K3-RCS



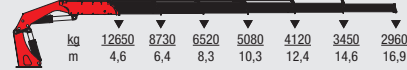
70200K4-RCS



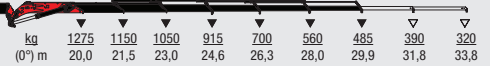
70200K5-RCS



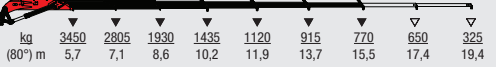
70200K6-RCS



FJ-1200



FJ-1200



▼ Lifting capacity, no manual extensions
 ▽ Lifting capacity with manual extensions

For more information visit
hmfcranes.com