

# HYVA<sup>®</sup> CRANE HC 241



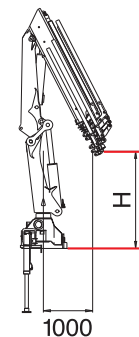
| MODELS     | LIFTING MOMENT | MAX VERTICAL REACH |        | SLEWING ANGLE | SLEWING TIME | MAX WORKING HEEL | WORKING PRESSURE | CRANE WEIGHT WITHOUT STABILIZERS | WEIGHT OF STABILIZERS | OIL TANK CAPACITY | OIL FLOW       | DIMENSIONS     |
|------------|----------------|--------------------|--------|---------------|--------------|------------------|------------------|----------------------------------|-----------------------|-------------------|----------------|----------------|
|            |                | tm                 | m      |               |              |                  |                  |                                  |                       |                   |                |                |
| HC241 E1   | 21,4           | HYD. 9,9           | MAN. - | 387           | 22           | 4                | 325              | 2210                             | 360 Std.<br>430 Extra | 130               | 38             | 2520x2330x1005 |
| HC241 E2   | -              | 11,8               | -      | 387           | 22           | 4                | 325              | 2360                             |                       | 130               | 38             | 2520x2330x1016 |
| HC241 E3   | -              | 13,8               | 19,9   | 387           | 22           | 4                | 325              | 2510                             |                       | 130               | 38             | 2520x2330x1016 |
| HC241 E4   | -              | 15,7               | 22,0   | 387           | 22           | 4                | 325              | 2650                             |                       | 130               | 38             | 2520x2330x1016 |
| HC241 E5   | -              | 17,8               | 24,1   | 387           | 22           | 4                | 325              | 2770                             |                       | 130               | 38             | 2520x2330x1016 |
| HC241 E6   | -              | 19,9               | 26,2   | 387           | 22           | 4                | 325              | 2890                             |                       | 130               | 38             | 2520x2330x1016 |
| HC241 E7   | -              | 22,0               | 26,2   | 387           | 22           | 4                | 325              | 2990                             |                       | 130               | 38             | 2520x2330x1095 |
| HC241 E8   | -              | 24,1               | 26,2   | 387           | 22           | 4                | 325              | 3090                             |                       | 130               | 38             | 2520x2330x1095 |
| HC241 E4J2 | -              | 22,1               | 27,6   | 387           | 22           | 4                | 325              | 3160                             |                       | 130               | 38             | 2520x2615x1140 |
| HC241 E4J3 | -              | 23,9               | 27,6   | 387           | 22           | 4                | 325              | 3250                             | 130                   | 38                | 2520x2615x1140 |                |
| HC241 E6J2 | -              | 25,4               | 27,6   | 387           | 22           | 4                | 325              | 3190                             | 130                   | 38                | 2520x2495x1140 |                |

## ACCESSORIES

Radio remote control  
Automatic turning stabilizers  
Manually turning stabilizers  
Supplementary elements activations (1)  
Winch  
Manual extensions  
Hydraulic extra extensible stabilizers  
One-shot lubrication  
Oil cooler  
Top seal  
Mechanical rotation limitation (No CE)  
Operator Full Protection  
Extra cross beams  
"Green" Oil<sup>®</sup>

## ACCESSOIRES

Radiocommande  
Béquilles tournantes automatiques  
Béquilles tournantes manuelles  
Activation éléments supplémentaires (1)  
Treuil  
Rallonges mécaniques  
Stabilisateurs extra extensibles hydrauliques  
Lubrification centrale  
Refroidisseur huile  
Poste de manoeuvre en haut  
Limitation mécanique de la rotation (Non CE)  
Operator Full Protection  
Béquilles supplémentaires  
Huile écologique<sup>®</sup>



HC 241 E1 = 2480  
HC 241 E2 = 2390  
HC 241 E3 = 2355  
HC 241 E4 = 2370  
HC 241 E5 = 2275  
HC 241 E6 = 2185  
HC 241 E7 = 2070  
HC 241 E8 = 1970

## ZUBEHOERE

Funkfernsteuerung  
Automatisch drehbare Abstützbeine  
Manuell drehbare Abstützbeine  
Zusätzliche Steuerelemente (1)  
Seilwinde  
Mechanische Ausleger  
Hydraulisch abstützungen mit Extraauszug  
Sammelschmierung  
Ölkühler  
Hoch Führersitz  
Mechanischer Schwenkbegrenzer (Nicht CE)  
Operator Full Protection  
Zusatzabstützungen  
Bio-Öl<sup>®</sup>

## ACCESORIOS

Comando por rádio  
Estabilizadores giratórios automáticos  
Estabilizadores manualmente giratórios  
Ativação de elementos suplementares (1)  
Guincho de cabo  
Extensões mecânicas  
Estabilizadores hidráulicos extra extensíveis  
Lubrificação central  
Radiador para refrigeramento de óleo  
Posto de manobra no cimo  
Limitador mecânico de giro (Não CE)  
Operator Full Protection  
Estabilizadores adicionais  
Óleo ecológico<sup>®</sup>



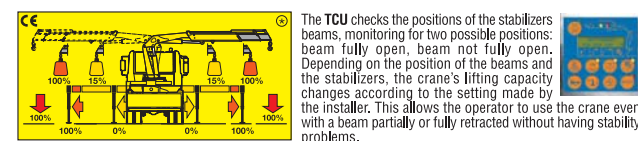
Eco-friendly

(1) No E7 - E8 - E4J3 - E6J2

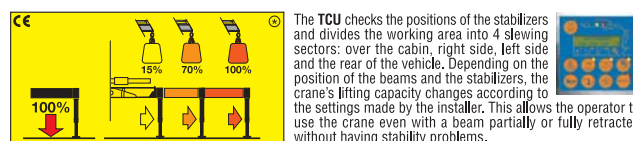
## HXL

### Stability control system (CE)

## H2XL



The TCU checks the positions of the stabilizers beams, monitoring for two possible positions: beam fully open, beam not fully open. Depending on the position of the beams and the stabilizers, the crane's lifting capacity changes according to the setting made by the installer. This allows the operator to use the crane even with a beam partially or fully retracted without having stability problems.



The TCU checks the positions of the stabilizers and divides the working area into 4 slewing sectors: over the cabin, right side, left side and the rear of the vehicle. Depending on the position of the beams and the stabilizers, the crane's lifting capacity changes according to the settings made by the installer. This allows the operator to use the crane even with a beam partially or fully retracted without having stability problems.

The HPES (Proportional Encoder Sensor) recognizes 3 positions of the stabilizers beams: fully open, half extended, fully closed.

The HRCS (Rotation Control Sensor) recognizes 4 slewing sectors: over the cabin, right side, left side, to the rear of the vehicle.

The CAN-BUS radio-control allows the operator to know the positions of the stabilizers and the loading conditions of the crane.

With manual opening stabilizers, the H2XL System only recognizes completely open or completely closed beam positions.

The percentages present in the pictures are merely examples and they have no bearing on the cranes' real lifting capacities. The cranes' real lifting capacities will depend on truck's stability.

## TRUCK-MOUNTED CRANES HC 241



Tipping Solutions | Container Handling | Waste Handling | Cranes



Quality and environmental certified

# HYVA<sup>®</sup> CRANE

**Hya Holding B.V.**  
Antonie van Leeuwenhoekweg 37  
2408 AK Alphen aan den Rijn  
The Netherlands  
Telephone: +31 (0)172 - 42 35 55  
Telefax: +31 (0)172 - 42 08 80  
info@hyva.com  
www.hyva.com  
www.hyvacrane.com

Dealer

Data, descriptions and illustrations pertain only and uniquely to models sold at the time of printing of this brochure. After the date of printing, this information is purely indicative and not binding upon HYVA. Future modifications are solely at the discretion of HYVA and are always in compliance with applicable and pertinent safety standards. To obtain updated data, descriptions and illustrations, contact the manufacturer or your reseller. Cranes manufactured and/or marketed by HYVA - Les données, les descriptions et les illustrations se rapportent seulement et exclusivement aux modèles commercialisés à la date d'impression de ce document. Après la date d'impression, ces informations sont simplement indicatives et ne s'engagent pas HYVA. D'éventuelles modifications sont à la discrétion d'HYVA et toujours dans l'observance des normes de sécurité pertinentes et applicables. Pour obtenir les données, les descriptions et les illustrations actualisées, s'adresser au fabricant ou au revendeur. Cranes produites et/ou vendues par HYVA - Daten, Beschreibungen und Abbildungen betreffen sich ausschließlich auf die zum Zeitpunkt des Drucks dieser Broschüre vertriebenen Modelle. Nach diesem Datum verstehen sich diese Informationen als rein richtungsweisend und sind in keinem Fall für HYVA verbindlich. HYVA behält sich vor, nach eigenem Ermessen und in jedem Fall unter Berücksichtigung der zugehörigen und geltenden Sicherheitsvorschriften Änderungen vorzunehmen. Bitte wenden Sie sich für aktuelle Daten, Beschreibungen und Abbildungen an den Hersteller oder Händler. Die Krane werden von HYVA hergestellt und/oder vermarktet. - Os dados, descrições e ilustrações referem-se única e exclusivamente aos modelos comercializados à data da impressão deste folheto. Após a data da impressão, estas informações são meramente indicativas pelas quais a HYVA não se responsabiliza. Eventuais alterações ficam ao critério da HYVA e estão sempre em conformidade com as normas de segurança pertinentes e aplicáveis. Para obter dados, descrições e ilustrações atualizadas, contacte o fabricante ou revendedor. Guindaste produzido e/ou comercializado pela HYVA.

M.K.T. 5.80.0192. Date of printing - Date d'impression - Zeitpunkt des Drucks - Data da impressão: 01/01/2017. REV.1

## TRUCK-MOUNTED CRANES HC 241



# HYVA<sup>®</sup> CRANE HC 241



- Load limiting device
- Hexagonal section extensions
- Independent extension cylinders
- Hydraulic opening stabilizers
- Flanged valves
- Assembly kit
- Fatigue test classification: B3
- Designed in accordance with: EN12999-DIN15018
- Oil tank
- Filings SAE-JIC
- Self-lubricating bushings
- Fixed stabilizer cylinders
- Proportional control valve
- Light indicator for correct stabilizer stowing (CE)
- Swivel stabilizer foot
- Plastic cover on the control station
- Proportional inclination sensor on second boom
- Proportional pressure transducer on main cylinder
- Sensor for correct stowing of the crane (CE)
- 90% - 100% light visible from all around the crane
- High pressure filter



- Limiteur de moment
- Extensions à section hexagonale
- Vérins hydrauliques à sortie indépendante
- Stabilisateurs avec ouverture hydraulique
- Vannes bridées
- Kit de brides de fixation
- Projet en accord avec normes: EN12999-DIN15018
- Essai de fatigue avec classification: B3
- Réservoir huile
- Filings SAE-JIC
- Douilles autolubrifiantes
- Vérins stabilisateurs fixes
- Distributeur proportionnel
- Kit capteurs de replies de béquilles stabilisatrices (CE)
- Plat d'appui béquilles avec joint à rotule
- Capot de protection du bloc de commande
- Capteur proportionnel d'inclinaison sur le second bras
- Capteur de pression proportionnel sur le vérin de levage
- Capteur de position "grue repliée" (CE)
- Colonne tricolore indiquant le statut de charge (90%-100%) visible de tous les côtés de la grue
- Filtre en pression



- Momentbegrenzer
- Sechskantige Ausschübe
- Unabhängige Schubzylinder
- Hydraulisch ausfahrbare Abstützungen
- Ventile mit Flansch
- Befestigungsteile
- Berechnungsnorm nach EN12999-DIN15018
- Ermüdungstest in Klasse: B3
- Ölbehälter
- Anschlüsse SAE-JIC
- Selbstschmierende Buchsen
- Feste Abstützungen
- Steuerventil
- Warnleuchte für Abstützungen (CE)
- Gelenkstützteller
- Kunststoffabdeckung für die Bedienungseinheit
- Proportionaler Sensor für die Neigung am 2. Auschub
- Proportionaler Druckwandler am Hauptzylinder
- Sensor für die korrekte Zusammenfaltung des Kranes (CE)
- Licht 90% - 100% sichtbar von allen Seiten des Kranes
- Druckfilter



- Válvula limitadora de momento de carga
- Extensões sextavadas
- Cilindros de extensão independentes
- Estabilizadores estendidos hidráulicamente
- Válvulas flangeadas
- Kit de montagem
- Norma do projeto: EN12999-DIN 15018
- Tipo de ensaio de fadiga: B3
- Reservatório de óleo
- Conexões SAE-JIC
- Buchas auto-lubrificantes
- Estabilizadores fixos
- Distribuidor proporcional
- LED indicador de recolhimento correcto de estabilizador (CE)
- Plataforma de patolamento articulada
- Proteção plástica nas alavancas de comando
- Sensor de inclinação no segundo braço
- Transdutor de pressão no cilindro de elevação
- Indicador luminoso de recolhimento correcto de guindaste (CE)
- Indicação luminosa 90%-100% visível de todos os lados do guindaste
- Filtro de pressão

## EES Extra Extension Speed

A special regenerative valve re-uses oil during extension, ensuring an incredibly high speed without compromising the safe operation of the crane.

## SDS Smooth Descent System

This system compensates for boom oscillation, ensuring smooth movement of the load.

## TCU Total Control Unit

TCU is a monitoring system designed by Hyva Crane to control all aspects of crane operation, including control of accessories. A display shows the user the state of the crane and easy on-board diagnostics allow the technician and dealer to inspect the activities of the crane.

## LCS Lift Control System

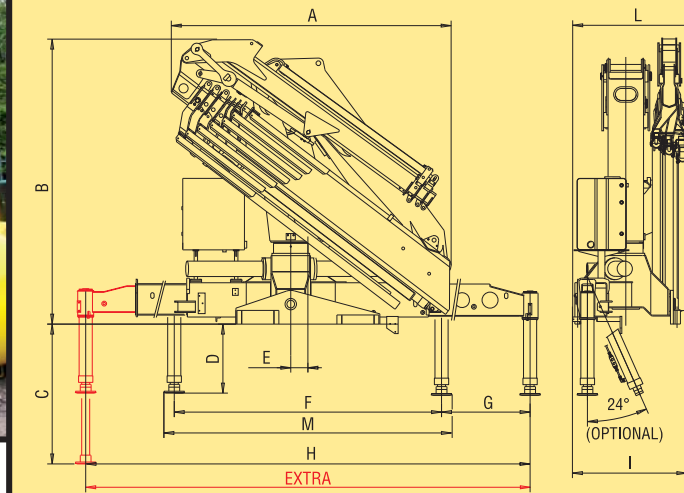
Lift Control System increases the capacity of the crane up to 10% by reducing the speed when the crane is near its maximum lifting capacity.

## LAS Liftrod Articulating System

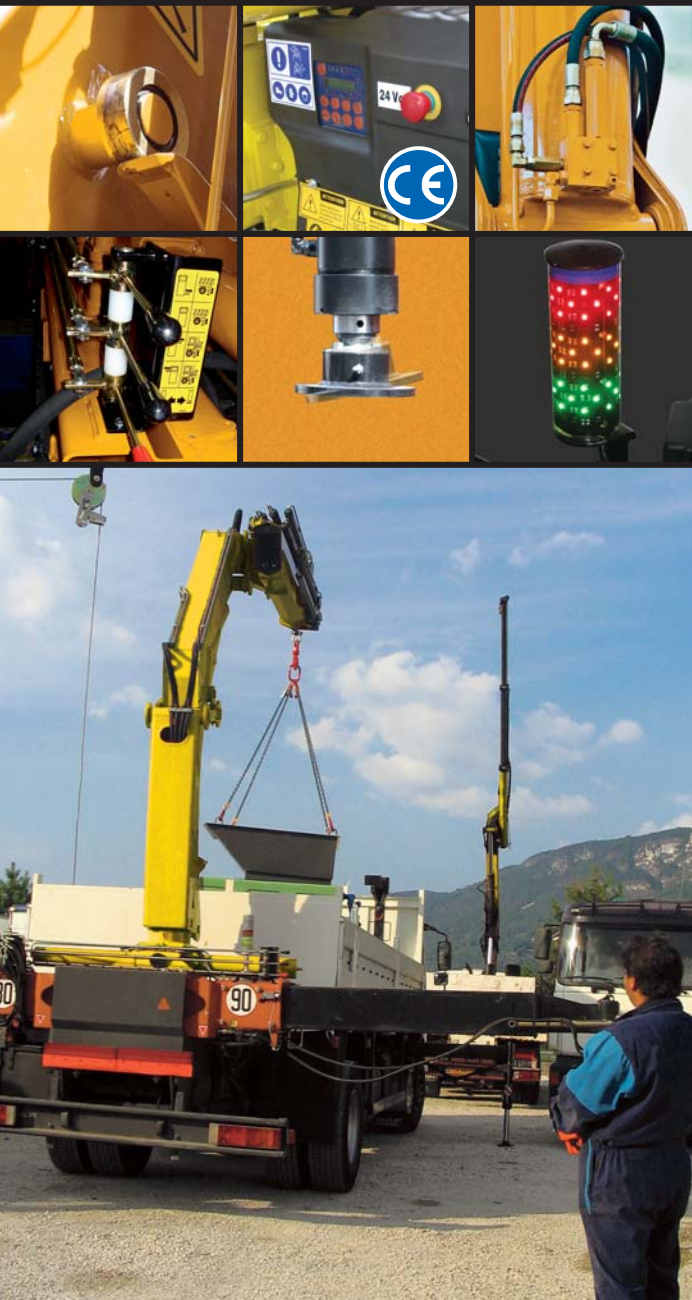
Thanks to the connecting rods the lifting capacity of the crane is constant in all boom positions.

| Model          | kg | 21390 | 9285** | 4840  | 3450  |
|----------------|----|-------|--------|-------|-------|
| HC241 E1       | m  | 1,00  | 2,20   | 4,25  | 6,20  |
| HC241 E2       | kg | 20800 | 9150** | 4645  | 3275  |
|                | m  | 1,00  | 2,20   | 4,37  | 6,24  |
| HC241 E3       | kg | 19910 | 8985** | 4525  | 3135  |
|                | m  | 1,00  | 2,20   | 4,40  | 6,27  |
| HC241 E4       | kg | 19340 | 8745** | 4415  | 2975  |
|                | m  | 1,00  | 2,20   | 4,38  | 6,25  |
| HC241 E5       | kg | 18840 | 8515** | 4215  | 2825  |
|                | m  | 1,00  | 2,20   | 4,47  | 6,34  |
| HC241 E6       | kg | 18340 | 8300** | 4030  | 2670  |
|                | m  | 1,00  | 2,20   | 4,55  | 6,42  |
| HC241 E7       | kg | 18080 | 8190** | 3880  | 2550  |
|                | m  | 1,00  | 2,20   | 4,66  | 6,53  |
| HC241 E8       | kg | 17690 | 8010** | 3725  | 2445  |
|                | m  | 1,00  | 2,20   | 4,75  | 6,63  |
| HC241 E4 Jib 2 | kg |       |        | 640   | 560   |
|                | m  |       |        | 15,00 | 16,70 |
| HC241 E4J3     | kg |       |        | 570   | 490   |
|                | m  |       |        | 15,00 | 16,70 |
| HC241 E6J2     | kg |       |        | 520   | 480   |
|                | m  |       |        | 18,90 | 20,25 |

\* Theoretical lifting capacity  
\*\* Fixed hook capacity



| Model | E1   | E2   | E3   | E4   | E5   | E6   | E7   | E8   | E4 J3 | E6 J2 |
|-------|------|------|------|------|------|------|------|------|-------|-------|
| A     | 2014 | 2086 | 2193 | 2285 | 2345 | 2391 | 2415 | 2460 | 2405  | 2450  |
| B     | 2330 | 2330 | 2330 | 2330 | 2330 | 2330 | 2330 | 2330 | 2615  | 2495  |
| C     | 1270 | 1270 | 1270 | 1270 | 1270 | 1270 | 1270 | 1270 | 1270  | 1270  |
| D     | 650  | 650  | 650  | 650  | 650  | 650  | 650  | 650  | 650   | 650   |
| E     | 150  | 150  | 150  | 150  | 150  | 150  | 150  | 150  | 150   | 150   |
| F     | 2340 | 2340 | 2340 | 2340 | 2340 | 2340 | 2340 | 2340 | 2340  | 2340  |
| G     | 1600 | 1600 | 1600 | 1600 | 1600 | 1600 | 1600 | 1600 | 1600  | 1600  |
| H     | 5540 | 5540 | 5540 | 5540 | 5540 | 5540 | 5540 | 5540 | 5540  | 5540  |
| I     | 1005 | 1016 | 1016 | 1016 | 1016 | 1016 | 1016 | 1095 | 1264  | 1264  |
| L     | 1129 | 1140 | 1140 | 1140 | 1140 | 1140 | -    | -    | 1264  | 1264  |
| M     | 2520 | 2520 | 2520 | 2520 | 2520 | 2520 | 2520 | 2520 | 2520  | 2520  |
| EXTRA | 6240 | 6240 | 6240 | 6240 | 6240 | 6240 | 6240 | 6240 | 6240  | 6240  |



Only CE Version

Pressure compensated control valve: SAUER DANFOSS PVG32

- Multifunction remote control
- Protected against radio interference
- Move around the truck freely