

## Specifications

MODEL		GTH-4518R	
MEASUREMENTS		Metric	Imperial
Lifting height (max)		17.25 m	56 ft 7 in
Lifting capacity (max)		4,500 kg	9,920 lbs
Lift capacity at maximum height		3,000 kg	6,613 lbs
Lift capacity at maximum reach		750 kg	1,653 lbs
Forward reach (max)		14.9 m	48 ft 11 in
Reach at maximum height		3.6 m	11 ft 10 in
<b>A</b> Height		2.93 m	9 ft 7 in
<b>B</b> Height at steering wheel		2.07 m	6 ft 9 in
<b>C</b> Width		2.48 m	8 ft 2 in
<b>D</b> Inside cab width		91 cm	3 ft
<b>E</b> Track		2.02 m	6 ft 8 in
<b>F</b> Wheelbase		3.03 m	9 ft 11 in
<b>G</b> Length at front wheels		5.28 m	17 ft 4 in
<b>H</b> Length at fork-holder plate		6.78 m	21 ft 7 in
<b>I</b> Ground clearance		37 cm	1 ft 3 in
<b>L</b> Overall width, stabilisers extended		5.01 m	16 ft 5 in
<b>M</b> Side rear overhang		2.42 m	7 ft 11 in
<b>N</b> Side front overhang		4.14 m	13 ft 7 in
<b>O1</b> Obstruction angle		20°	20°
<b>O2</b> Departure angle		20°	20°

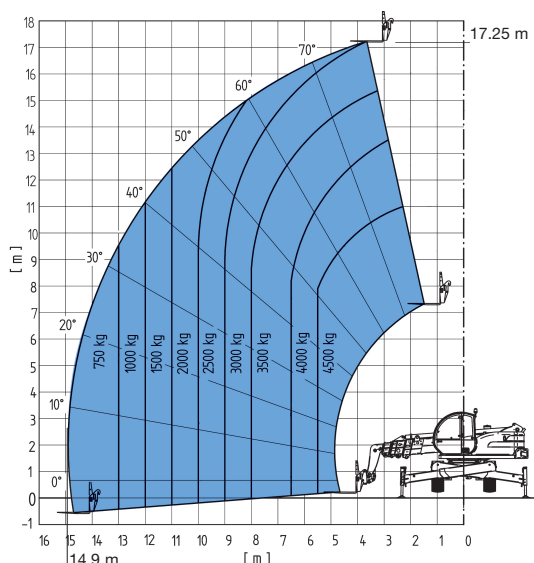
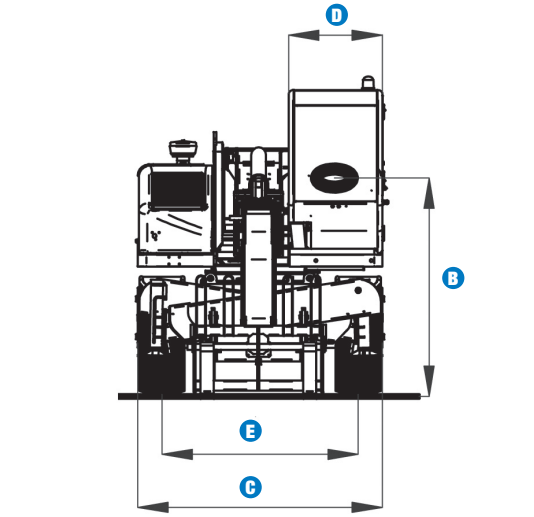
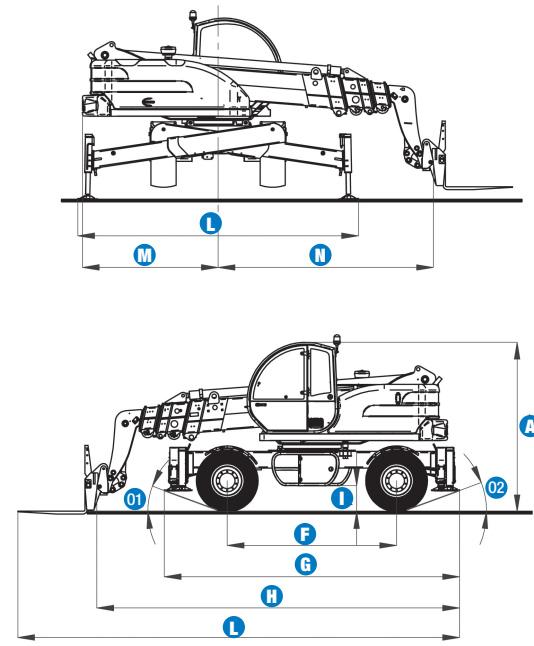
PRODUCTIVITY		
Inside/outside turning radius	1.14 m/4 m	6 ft 6 in/ 11 ft
Break-out force (with 800 L shovel SAE J 732/80)	7,400 kg	16,313 lbs
Towing capacity at dynamometer	8,000 kg	17,635 lbs
Travel speed (max)	30 km/h	19 mph
Fork-holder plate rotation	145°	145°
Chassis leveling	+/- 6°	+/- 6°
Floating forks	Length 1200 mm Section 120 x 50mm	Length 47 in Section 5 in x 2 in
Tyres (DIN 70361)	18-19.5" PR16	

POWER		
Engine	Deutz Turbo Diesel 74,9 kW (102 HP)	
Tank capacities		
Fuel	145 L	32 gal
Engine oil	12 L	3 gal
Hydraulic oil	230 L	51 gal
Hydraulic output/pressure	100 L/min-270 bars	22 gal/min-3,916 psi

WEIGHT		
Weight*	14,800 kg	32,625 lbs

**STANDARDS COMPLIANCE**      Operating cab conforms to ISO3471 (ROPS) and ISO3449 (FOPS)  
 Low emission engine conforms to UE 97/68 directives.

\* Weight will vary depending on options and/or country standards



Lift capacity chart (with stabilisers)

EN1459, Annex B

## Features

### STANDARD FEATURES

#### MEASUREMENTS

- 4,500 kg (9,920 lbs) maximum lift capacity
- 17.25 m (56 ft 7 in) maximum lift height
- 14.9 m (48 ft 11 in) maximum forward reach

#### PRODUCTIVITY

- Four-wheel drive
- 3 steering modes:
  - front wheel steer
  - crab steer
  - coordinated steer
- Power assisted steering
- 4 hydraulic stabilisers
- Quick coupling of tools from cab
- Two-speed hydrostatic motor coupled to a two-speed mechanical gearbox
- 2 electro-proportional 4x1 joystick
- Limited slip differential on front axle
- Fork-holder plate and floating forks
- Attachment holder plate hydraulic coupling
- Adjustable suspended seat
- Large diameter steering wheel
- Front windscreen wipers
- Front & rear lights
- Oil immersed multi-disc brakes on front axle
- Lockable fuel tank
- Electronic stability and over-loading control system
- Black box to record system malfunctions
- Diagnostic integrated system with a special software to identify anomalies and failures
- Standard device to notify the scheduled maintenance throughout a digital display
- Visible display with coloured LEDs
- Audible alarm
- Automatic lock-out of boom extension and lowering
- Control enable switch

#### POWER

- Deutz Turbo Diesel 74,9 kW (102 HP)

#### TYRES

- 18-19.5" PR16



### OPTIONS & ACCESSORIES

#### PRODUCTIVITY

- Air conditioning
- Windshield protection grid
- Wiper on cab roof
- Adjustable spotlight
- Spotlight on boom
- Pre-arrangement for mixing bucket
- Second hydraulic line on boom

#### ATTACHMENT OPTIONS

- Loading shovel 800 L
- Concrete bucket 500/800 L manual/hydraulic discharge
- Concrete mixing bucket 500 L with remote control
- Hydraulic jack 20 ton + box wrench 30 mm
- Brick-holder basket
- Fork side-shift (+/- 100 mm)
- Fixed hook on plate
- 4 m jib, 900 kg capacity
- 4 m jib with 900 kg capacity hydraulic winch
- Hydraulic winch 3000 kg
- Rotating and extensible man-platform up to 4.64 m

#### TYRES

- Foam-filled tyres
- Spare wheel 18-19.5" PR16

### European Offices

#### UK

The Maltings  
Wharf Road  
Grantham NG31 6BH  
UK  
Tel: +44 (0)1476 584333  
Fax: +44 (0)1476 584334

#### France

10, ZA de la Croix St. Mathieu  
28320 Gallardon  
France  
Tel: +33 (0)2 37 26 09 99  
Fax: +33 (0)2 37 26 09 98

#### Germany

Finienweg 3  
28832 Achim/Bremen  
Germany  
Tel: +49 (0)4202 8852-0  
Fax: +49 (0)4202 8852-25

#### Spain

Gaià 31, Pol. Ind. Plà d'en Coll  
08110 Montcada i Reixac  
Barcelona  
Spain  
Tel: +34 93 572 50 90  
Fax: +34 93 572 50 91

#### Scandinavia

Tagenevägen 72  
425 37 Hisings Kärra  
Sweden  
Tel: +46 31 57 51 00  
Fax: +46 31 57 90 20

### Genie United States

18340 NE 76th Street  
P.O. Box 97030  
Redmond, Washington 98073-9730  
USA  
Tel: +1 425 881-1800  
Fax: +1 425 883-3475

**WEB:** [www.genieindustries.com](http://www.genieindustries.com)  
**Email:** [infoeurope@genieind.com](mailto:infoeurope@genieind.com)

### Distributed By: