

FXH 33 Technical Data

Rider Seated Low Lift Pallet Truck

FXH 33/Li-Ion



FXH 33 Rider Seated Low Lift Pallet Truck

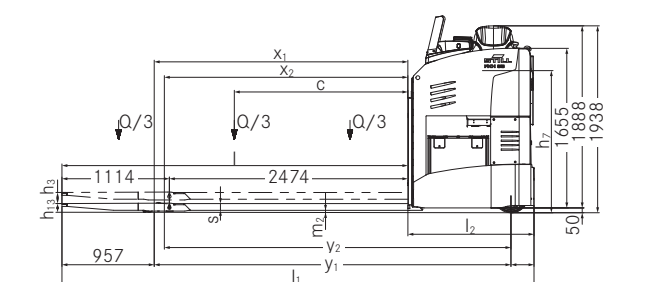
Top Performance in Record Time

This specification sheet, which conforms to VDI guideline 2198, provides the technical values for the standard equipment only. Different tyres, other masts, the use of accessories, etc. may result in other values.

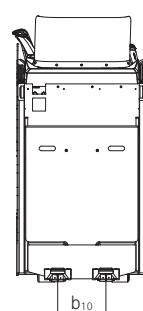


Features	1.1	Manufacturer			STILL
	1.2	Manufacturer's type designation			FXH 33/Li-Ion ¹
	1.3	Drive			Electric
	1.4	Operation			Rider seated
	1.5	Nominal load capacity	Q	kg	3300
	1.6	Load centre	c	mm	1800
	1.8	Load distance	lowered/raised x_1/x_2	mm	2634/2528
	1.9	Wheel base	lowered/raised y	mm	3700/3595
	2.1	Service weight (incl. battery)		kg	3560
Weights	2.2	Axle load, laden	drive end/load end	kg	3440/3420
	2.3	Axle load, unladen	drive end/load end	kg	2790/770
	3.1	Tyres			Vulkollan
Wheels/chassis	3.2	Tyre size	drive end	mm	Ø 360 x 130
	3.3	Tyre size	load end	mm	Ø 90 x 95
	3.5	Number of wheels (x = driven)	drive end/load end		2 x/4
	3.6	Track width	drive end/load end	b_{10}/b_{11}	mm 370/562
	4.4	Lift	h_3	mm	115
	4.8	Seat height	h_7	mm	1474
Dimensions	4.15	Fork height, lowered	h_{13}	mm	91
	4.19	Total length	l_1	mm	4896
	4.20	Length including fork backs	l_2	mm	1308
	4.21	Total width	b_1	mm	1000
	4.22	Fork dimensions	s/e/l	mm	70/200/3590
	4.25	Overall fork width	b_5	mm	571
	4.32	Ground clearance, centre of wheel base	m_2	mm	20
	4.34.1	Working aisle width for pallet 800 x 1200 lengthways	raised A_{st}	mm	5289
	4.35	Turning radius	W_a	mm	3944
	5.1	Driving speed	laden/unladen	km/h	20/20
Performance	5.1.1	Driving speed backwards	laden/unladen	km/h	20/20
	5.2	Lifting speed	laden/unladen	m/s	0.04/0.05
	5.3	Lowering speed	laden/unladen	m/s	0.05/0.04
	5.8	Maximum gradeability, forks raised	laden/unladen	%	8/10
	5.9	Acceleration speed (to 10 m)	laden/unladen	s	4.1
	5.10	Service brake			Electromagnetic
Electric engine	6.1	Drive motor, rating S2 = 60 min		kW	2 x 6.5
	6.2	Lift motor, rating at S3		kW	2
	6.4	Battery voltage/rated capacity K_5		V/Ah	48/930
	6.5	Battery weight ±5% (depending on manufacturer)		kg	1000 Li-Ion: 1317 ¹
	6.6	Energy consumption according to VDI cycle		kWh/h	4.17
	8.1	Transmission control			AC control
Misc.	10.7	Noise level (at operator's ear)		dB(A)	<70

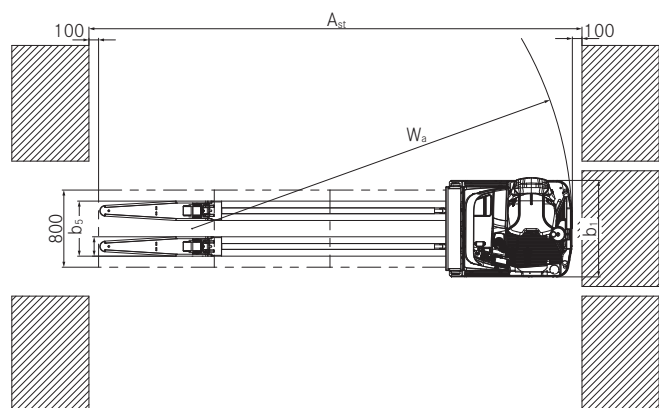
¹ Lithium ion version available from 04/01/2020



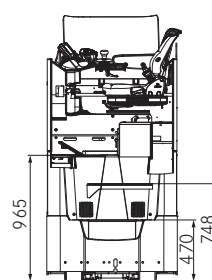
Side view



Front view



Top view



Rear view

FXH 33 Rider Seated Low Lift Pallet Truck

Detailed Photos



Height-adjustable foot plate that adapts to all body sizes for ergonomic working conditions



Easy positioning of optional data terminal and other accessories thanks to integrated accessory rails



Ultimate comfort thanks to cushioned driver's seat and generous leg room



High-precision handling of all functions via joystick and user-friendly operator guidance on the display menu



Easy to manoeuvre even in the most confined spaces thanks to compact chassis contour



Operator can step on to and off the truck easily and safely thanks to low steps

FXH 33 Rider Seated Low Lift Pallet Truck
Top Performance in Record Time



FXH 33 Rider Seated Low Lift Pallet Truck
Top Performance in Record Time



FXH 33 Rider Seated Low Lift Pallet Truck

Top Performance in Record Time

Effective goods handling due to simultaneous transport of three pallets (3.3 t)

Fast transport of goods even over long distances thanks to travel speeds of up to 20 km/h

Optimal driver's seat ergonomics and visibility of the fork tips thanks to high seat position

Precise, safe lifting and lowering of load due to proportional valve technology



The FXH 33 is the transport locomotive among the STILL low lift pallet trucks. Other models quickly reach their limits in retail and industry – the powerful FXH 33, on the other hand, is completely in its element. Its rounded forks can lift up to three pallets at the same time. Owing to its lifting capacity of up to 3.3 tonnes, which is enormous for its class, the compact powerhouse can handle even the most heavy-duty applications. Coupled with a driving speed of up to 20 km/h, the FXH 33 achieves an outstanding handling capacity. Its exceptional performance is due to its two powerful rotary current drive motors, each with 6.5 kW. The battery is also a strong performer: with up to 930 Ah, it effortlessly masters any heavy-duty operations.

In order to make the operator's work as pleasant as possible, the FXH 33 has a range of impressive features. The brand-new colour display provides information about the battery status, driving speed, kilometres travelled, date and time. The display brightness automatically adjusts to the environment. While the joystick and the electric steering help with precise manoeuvring, the high seat position ensures a clear view of the goods transport. The cushioned driver's seat and the height-adjustable foot plate guarantee an ergonomically optimised driving experience, regardless of the operator's stature. Various systems – including Curve Speed Control, shunting and STILL Safety Light – also ensure maximum safety in the workplace.

The 'Simply Efficient' factors: Performance attributes as a measure of economic efficiency



Simply easy

- Easy to manoeuvre even in the most confined spaces due to compact chassis contour
- Exceptional handling performance thanks to optimal visibility of the fork tips
- Rounded fork tips enable fast and secure pallet lifting
- Precise goods handling thanks to fully electric 360° steering
- Intuitive operation of all functions via joystick



Simply powerful

- Effective goods handling at up to 20 km/h and a lifting capacity of up to 3,300 kg
- Powerful movement thanks to two reliable AC drive motors (48 V)
- Sufficient energy for multi-shift operation thanks to high battery capacity of up to 930 Ah
- Short charge cycles through optional lithium-ion technology
- Precise, safe lifting and lowering using proportional valve technology



Simply safe

- Ergonomic and safe access via generously sized steps and handhold
- Automatic speed adjustment to the steering angle keeps goods securely in place when cornering
- Sensitive braking along with energy recovery owing to the regenerative braking system

- Optimal safety in the event of a collision thanks to optional impact protection integrated at the drive end
- Visibility for other warehouse employees thanks to blue point of light projected by optional STILL Safety Light / STILL Safety Light 4Plus



Simply flexible

- Superior comfort thanks to cushioned driver's seat, generous leg room and a range of storage options
- Ergonomic conditions for all body sizes thanks to optional electric height-adjustable foot plate
- Suitable for any warehouse thanks to optional cold-store cabin and wind shield on three sides
- Always ready for use with fast, lateral battery change (optional)



Simply connected

- Clear overview of all relevant information via optional STILL neXXt fleet tool
- Shock detection, access protection against unauthorised third parties and cost optimisation with the optional STILL FleetManager 4.x
- Optimal goods flow thanks to the optional MMS preparation for straightforward integration into the material flow management system
- Easy service analysis and parametrisation of settings via CAN bus interface

FXH 33 Rider Seated Low Lift Pallet Truck

Equipment Variants



	FXH 33
Driver's seat	Comfort driver's seat with hydraulic cushioning and weight and length adjustment
	Air-sprung comfort driver's seat
	Driver's seat with heating system or leatherette upholstery
	Arm rest to the left of the driver's seat
	Height-adjustable foot plate
	Height-adjustable foot plate, electric
	Electric foot heating with thermostat regulation
	Joystick for raising/lowering, direction pre-selection and horn
	Driver can select from three driver profiles
	Easy-to-read display showing active operating states, automatic brightness regulation
	Integrated storage options and cup holder
	DIN A4 writing surface with clip; optional extra: reading lamp mounted vertically on a profile rail
Steering	Fully electric 360° steering
	Fully electric steering with reverse function
	Redundant steering safety system
Drives	Maintenance-free, fully enclosed drive units
	Curve Speed Control: speed reduction when driving around corners
	Individual parametrisation options
	Electric stroke shut-off
	Proportional valve technology for especially sensitive lifting
Brake	Good service accessibility, easy diagnosis via central diagnostic interface
	Electromagnetic brake system
	Energy recovery through regenerative braking
Battery	Electromagnetic disc brake as parking brake and emergency stop
	Lateral battery change with electric forklift truck
	Battery compartment for batteries up to 930 Ah
	Battery compartment for li-ion battery ¹ up to 1175 Ah
	Preparation for operation with li-ion batteries ¹
Additional equipment	Various fork lengths
	Dirt guards in front of and behind the forklift castors
	Safety belt on the driver's seat
	Warning device STILL Safety Light/STILL Safety Light 4Plus ²
	LED headlights
	Electrical preparation for data terminal
	Power supply 12-48 V
	Lateral accessory rails for attachments
	Cold store variant
	Heated comfort cold-store cabin ³
	Wind shield on three sides, open towards the forks ³
	Wind shield towards the forks
	Shunting (creep speed) for non-activated seat contact switches
	Individually adjustable driving speeds
	Drive-end impact protection
	PIN code access, keyless, with button
	FleetManager: access authorisation, shock detection, reports
	FleetManager: data transfer via Bluetooth or GPRS
	Access authorisation via chip or card
	Acoustic warning signal (Digisound)
	USB port for charging small electrical devices

● Standard ○ Optional — Not available

¹ Lithium ion version available from 04/01/2020

² STILL Safety Light 4Plus available from 04/01/2020

³ Available from 04/01/2020



STILL GmbH
Berzeliusstraße 10
D-22113 Hamburg
Tel.: +49 (0)40/73 39-20 00
Fax: +49 (0)40/73 39-20 01
info@still.de

For further information please visit:
www.still.eu

STILL is certified in the following areas: Quality management, occupational safety, environmental protection and energy management.



first in intralogistics