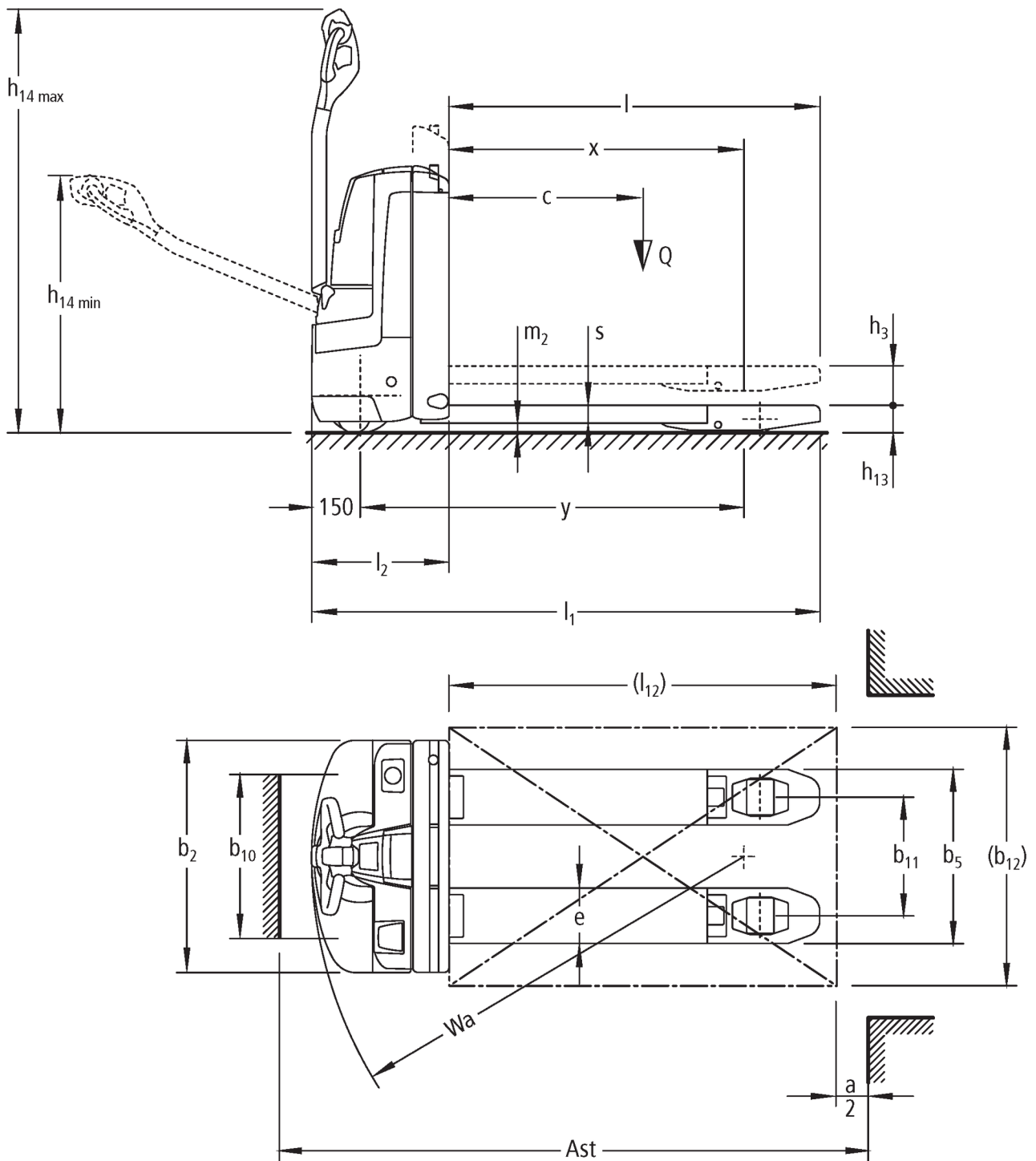




Electric pedestrian pallet truck **EJE 112i / 114i**

Lift height: 122 mm / Capacity: 1200-1400 kg

EJE 112i / 114i



VDI table

Stand-on: 10/2019

Characteristic	1.1	Manufacturer (abbreviated description)		Jungheinrich		
	1.2	Manufacturer's type designation		EJE 112i	EJE 114i	
Weights	1.3	Drive		Electric		
	1.4	Operation		Pedestrian		
	1.5	Capacity/load	Q	kg	1.200	1.400
	1.6	Load centre distance	c	mm	600	
	1.8	Load distance, centre of drive axle to fork	x	mm	911	
	1.9	Wheelbase	y	mm	1.186	
	Wheels/suspension system	2.1.1	Service weight (incl. battery)		kg	315
2.2		Axle load laden front/rear		kg	557 / 958	625 / 1.090
2.3		Axle load unladen front/rear		kg	246 / 69	
Basic dimensions	3.1	Tyres			PU/PU	
	3.2	Tyre size, front			Ø 230 x 70	
	3.3	Tyre size, rear			Ø 85 x 110 / 85 x 85	
	3.4	Additional wheels			Ø 100 x 40	
	3.5	Wheels, number front/back (x=driven)			1x 2/2	
	3.6	Tread width, front	b ₁₀	mm	508	
	3.7	Tread width, rear	b ₁₁	mm	368	
Performance data	4.4	Lift (h ₃)	h ₃	mm	122	
	4.9	Height of tiller handle in drive position min./max.		mm	797 / 1.313	
	4.15	Height, lowered		mm	85	
	4.19	Overall length	l ₁	mm	1.575	
	4.20	Length including fork shank	l ₂	mm	425	
	4.21	Overall width	b ₁ /b ₂	mm	720	
	4.22	Fork dimensions	s/e/l	mm	55 / 172 / 1.150	
	4.25	Width across forks (dimension 1), WaF	b ₅	mm	540	
	4.32	Ground clearance centre of wheelbase	m ₂	mm	30	
	4.34	Aisle width (pallet 1000x1200 sideways)	Ast	mm	1.762	
	4.34.1	Aisle width (pallet 800x1200 length)	Ast	mm	1.855	
E-motor/ Electronics	4.35	Turning radius	W _a	mm	1.370	
	5.1	Travel speed laden/unladen		km/h	6 / 6	
	5.2	Lift speed laden/unladen		m/s	0.04 / 0.05	
	5.3	Lowering speed laden/unladen		m/s	0.05 / 0.05	
	5.7	Gradeability laden/unladen		%	10 / 20	
Miscellaneous	6.1	Drive motor, performance S2 60 min		kW	1	
	6.2	Lift motor, performance with S3		kW	1.2	
	6.3	Battery according to DIN 43531/35/36			no	
	6.4	Battery voltage / nominal capacity		V / Ah	24 / 40	
	6.5	Battery weight		kg	14	
Miscellaneous	8.1	Type of drive control			AC speedCONTROL	
	10.7	Sound level as per EN12053, operator's ear		dB (A)	70	

- In accordance with VDI Guideline 2198 this data sheet provides details of the standard truck only. Non-standard tyres, different masts, optional equipment, etc. may result in different values.

The German production facilities in
Norderstedt, Moosburg and Landsberg
are certified.

ISO 9001
ISO 14001

Jungheinrich fork lift trucks meet
European safety requirements.



 **JUNGHEINRICH**

The Jungheinrich logo, featuring a red upward-pointing arrow integrated into the letter 'J', followed by the brand name 'JUNGHEINRICH' in a bold, black, sans-serif font.