

# E215C

## SPEC SHEET



### E215C

NET FLYWHEEL POWER	129 kW - 173 hp
MAX OPERATING WEIGHT	23160 Kg
BUCKET CAPACITY	0.52 m <sup>3</sup> - 1.31 m <sup>3</sup>



**BUILT AROUND YOU**

# E215C

## SPECIFICATIONS



### ENGINE TIER 4 INTERIM

Make and model ..... FPT F4HFE613S-A0002  
 Net flywheel Power (ISO 14396/ECE R120) 129 kW/173 hp (2000 rpm)  
 Maximum torque ..... 740 Nm (1400 rpm)  
 Type ... diesel, electric common rail, direct injection, intercooler, Selective Catalytic Reduction (SCR), exhaust after treatment with AdBlue  
 Displacement ..... 6.728 l  
 N. of cylinders ..... 6  
 Bore x stroke ..... 104 x 132 mm

**Remote engine oil filter for easy replacement**  
**Electronic engine rpm control, dial type**  
**Auto-idling selector** returns engine to minimum rpm when all controls are in neutral position  
**-25° outside temperature start** as standard equipment  
*The engine complies with 97/68/EC standards stage 3B*



### ELECTRICAL SYSTEM

Voltage / Alternator ..... 24V / 70 A  
 Starter motor ..... 4 kW  
 Maintenance-free batteries ..... 2 x 12V / 160 Ah



### TRANSMISSION

Type ..... hydrostatic, two-speed, Automatic DownShift  
 Travel motors ..... axial piston type, double displacement  
 Brakes ..... automatic discs type  
 Final drive ..... oil bath, planetary reduction  
 Gradeability ..... 70% (35°)  
 Travel speeds: ..... low 0 - 3.7 km/h / high 0 - 5.7 km/h  
 Drawbar pull ..... 192 kN



### UNDERCARRIAGE

X-frame undercarriage design  
 Reinforced track chain with sealed bushing

	E215C EL	E215C L	E215C LC
Track rollers (each side)	8	8	8
Carrier rollers (each side)	2	2	2
Length of track on ground (mm)	3660	3660	3660
Gauge (mm)	1990	2200	2390
Shoes (mm)	500-600	600-700	600-700
	700	800-900	800-900

Shoe type ..... Tractor type triple grouser shoe  
 No. for each side ..... 49  
 Height of grouser shoe ..... 26 mm



### HYDRAULIC SYSTEM

High capacity double pumps with electronic delivery adjustment.  
 Variable displacement pistons pumps revert in neutral automatically to zero. Main Control Valve with Fail Safe Function and Anti drift valve.  
 H.A.O.A. (Hydrotronic Active Operation Aid)  
 E.S.S.C. (Engine Speed Sensing Control)  
 D.O.C. (Dipper Optimised Control)  
 C.P.B. (Continuous Power Boost)

### 3 working Modes

H Mode - Heavy duty excavation work  
 S Mode - Standard digging and loading work  
 E Mode - Fuel Economy

### Attachments Modes

A Mode - Auxiliary attachments (two-way auxiliary)  
 B Mode - Breaker (one-way auxiliary)  
 Attachments flow and pressure setting from cab, 18 presets storage

### Hydraulic pump

Max flow at rated engine speed ..... 2 x 220 l/min  
 Piloting circuit gear type pump ..... max 20 l/min

### Directional control valves

Type ..... 8-spool valve

### System Pressures

Boom, Arm & Bucket ..... 34.3 MPa  
 with Power Boost ..... 37.8 MPa  
 Swing ..... 29 MPa  
 Pilot control Circuit ..... 5 MPa



### CAPACITIES

Fuel tank ..... 320 l  
 Hydraulic system (incl. 167 l tank) ..... 255 l  
 Cooling system ..... 24 l  
 AdBlue tank (Urea) ..... 89 l



### SWING

Swing motor ..... axial piston type  
 Swing brake ..... hydraulic brake  
 Swing speed ..... 0-12.8 rpm



### CAB AND CONTROLS

#### Operator's cab

Structure ..... Fully enclosed steel structure  
 EVO operator cabine ..... evolution in comfort and safety compliant to ROPS (ISO 12117-2) and FOPS (ISO 10262 level II) standards  
 Rear camera ..... standard  
 Monitor ..... integrated multi-function control monitor with integrated rear view camera display

#### Operator's seat

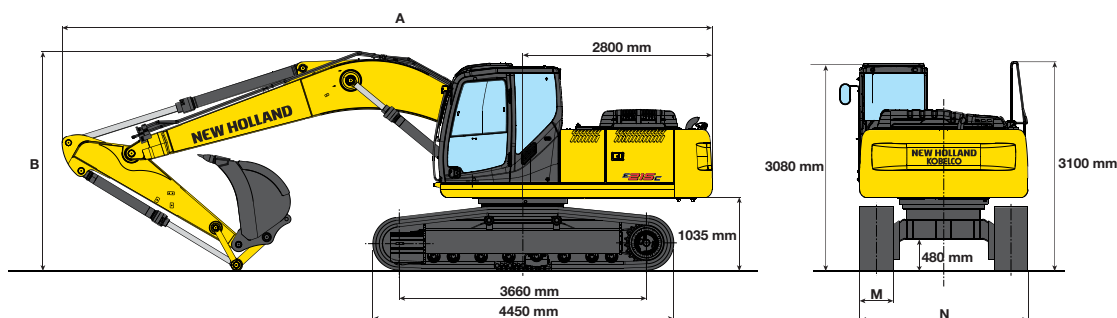
Operator's seat ..... Adjustable and reclining device

#### Operation

Engine control ..... Rotary - type electric throttle  
 Travel ..... Two hand levers or two foot pedals for forward and backward operations of each track independently  
 Excavating and swing ..... Two hand levers for four operations

## DIMENSIONS - MONOBOOM

### Boom length 5.65 m



#### EL / L / LCVERSION

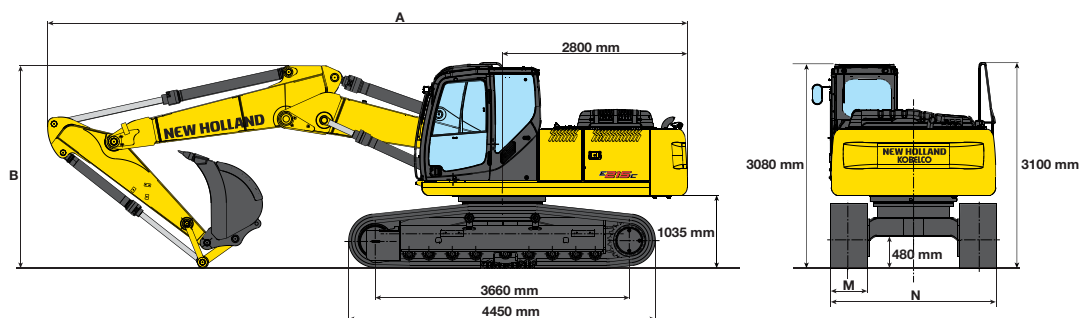
ARM		2080	2400	2940	3500
<b>A</b> - Overall length	mm	9620	9580	9500	9570
<b>B</b> - Boom height in transport position	mm	3250	3150	2970	3160
Overall height	mm	3250	3150	3100	3160

## OPERATING WEIGHT - MONOBOOM

		ELVERSION			LVERSION				LCVERSION			
<b>M</b> - Shoe width	mm	500	600	700	600	700	800	900	600	700	800	900
<b>N</b> - Maximum width	mm	2490	2590	2690	2800	2900	3000	3100	2990	3090	3190	3290
Operating weight*	kg	21040	21290	21560	21340	21620	21910	22170	21400	21670	21960	22230
Ground pressure*	bar	0.56	0.48	0.41	0.48	0.41	0.37	0.33	0.48	0.42	0.37	0.33

\* 2400 mm arm

## DIMENSIONS - TRIPLE ARTICULATION



#### EL / L / LCVERSION

ARM		2080	2400	2940	3500
<b>A</b> - Overall length	mm	9690	9670	9650	9630
<b>B</b> - Boom height in transport position	mm	3070	3020	2960	3250
Overall height	mm	3100	3100	3100	3250

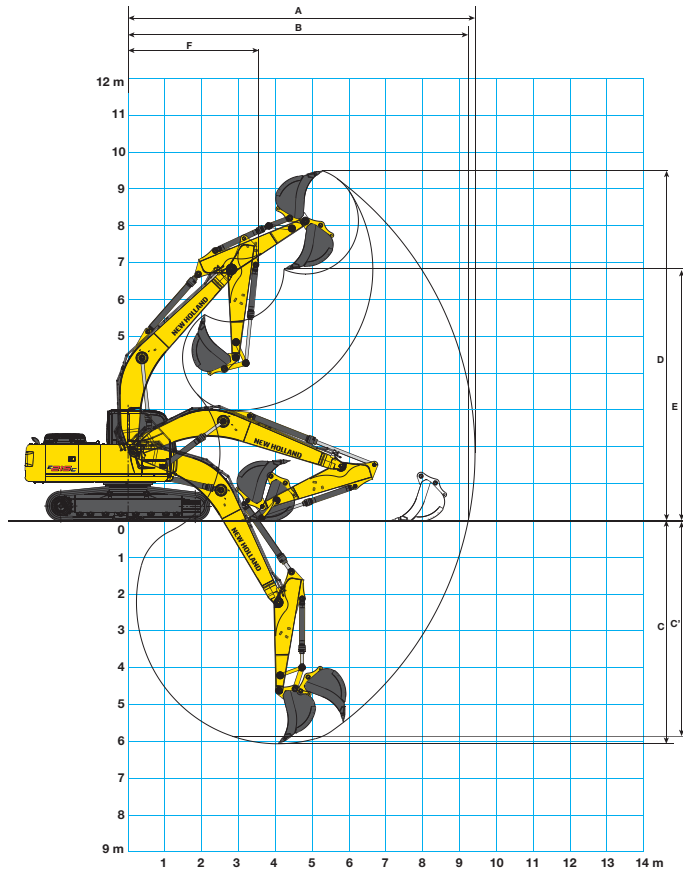
## OPERATING WEIGHT - TRIPLE ARTICULATION

		ELVERSION			LVERSION				LCVERSION			
<b>M</b> - Shoe width	mm	500	600	700	600	700	800	900	600	700	800	900
<b>N</b> - Maximum width	mm	2490	2590	2690	2800	2900	3000	3100	2990	3090	3190	3290
Operating weight*	kg	21720	21970	22240	22020	22290	22580	22850	22070	22350	22640	22900
Ground pressure*	bar	0.58	0.49	0.43	0.49	0.43	0.38	0.34	0.49	0.43	0.38	0.34

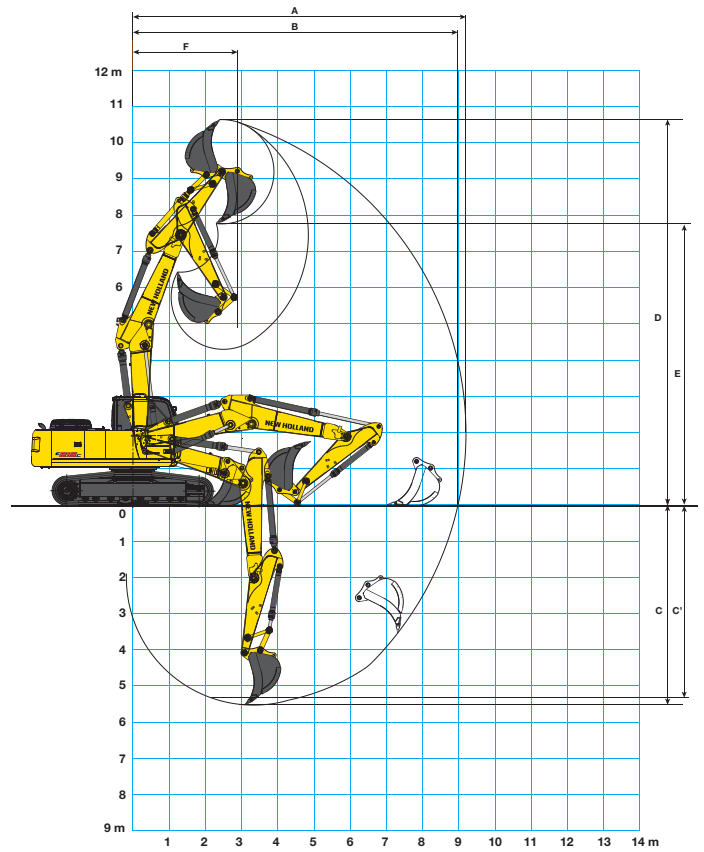
\* 2400 mm arm

# DIGGING PERFORMANCE

## MONOBOOM



## TRIPLE ARTICULATION



ARM	MONOBOOM				TRIPLE ARTICULATION				
	2080	2400	2940	3500	2080	2400	2940	3500	
A - Max. digging reach	mm	9160	9430	9910	10350	9200	9580	10080	10530
B - Max. digging reach at ground level	mm	8970	9240	9730	10170	8970	9390	9900	10370
C - Max. digging depth	mm	5740	6070	6610	7170	5530	5830	6380	6920
C' - 2,4 mt level digging depth	mm	5521	5861	6427	6996	5321	5645	6206	6759
D - Max. digging height	mm	9420	9500	9710	9740	10650	10840	11240	11500
E - Max. dumping clearance	mm	6610	6700	6930	7170	7760	7960	8360	8630
F - Min. swing radius	mm	3670	3550	3530	3470	2890	2800	2800	2800

## BREAKOUT FORCE

ARM		2080	2400	2940	3500
Bucket	daN	15500	15500	15500	1500
Dipperstick	daN	15200	13150	10900	9000

## WITH "POWER BOOST" ON

ARM		2080	2400	2940	3500
Bucket	daN	16900	16900	16900	16900
Dipperstick	daN	16500	14250	11800	9800

## MONOBOOM

## TRIPLE ARTICULATION

BUCKETS			E215C EL				E215C L				E215C LC				E215C EL				E215C L				E215C LC			
Width mm	Capacity SAE J296 (ISO 7451) m <sup>3</sup>	Weight kg	Arm mm				Arm mm				Arm mm				Arm mm				Arm mm				Arm mm			
			2080	2400	2940	3500	2080	2400	2940	3500	2080	2400	2940	3500	2080	2400	2940	3500	2080	2400	2940	3500	2080	2400	2940	3500
750	0.52	505																								
850	0.63	540																								
1000	0.79	635																								
1200	1.00	650																								
1300	1.10	700																								
1500	1.31	760																								

General digging work (specific weight of material < 1.8 t/m<sup>3</sup>)

Slightly heavy digging work (specific weight of material < 1,5 t/m<sup>3</sup>)

Loading work (specific weight of material < 1,2 t/m<sup>3</sup>)



# E215C

## LIFTING CAPACITY EL VERSION

### MONO BOOM - DIPPERSTICK 2080 mm

HEIGHT	RADIUS OF LOAD												REACH m	
	1.5 m		3.0 m		4.5 m		6.0 m		7.5 m		AT MAX REACH			
	FRONT	SIDE	FRONT	SIDE	FRONT	SIDE	FRONT	SIDE	FRONT	SIDE	FRONT	SIDE		
+7.5 m												6.4*	6.3	5.12
+6.0 m							6.2*	4.9				6.1*	4.4	6.42
+4.5 m			10.9*	10.9*	7.8*	7.1	6.6*	4.7				6.1*	3.7	7.19
+3.0 m					9.5*	6.5	7.3*	4.5	5.9	3.3	5.8	3.3	7.58	
+1.5 m					10.7*	6.1	7.9*	4.3	5.8	3.2	5.7	3.2	7.65	
0 m					11.0*	5.9	7.7	4.1			5.8	3.2	7.43	
-1.5 m			13.5*	10.7	10.5*	5.9	7.7	4.1			6.4	3.5	6.87	
-3.0 m			11.9*	10.9	9.1*	6.0					6.8*	4.3	5.88	
-4.5 m											6.2*	6.2*	4.15	

### TRIPLE ARTICULATION - DIPPERSTICK 2080 mm

HEIGHT	RADIUS OF LOAD												REACH m				
	1.5 m		3.0 m		4.5 m		6.0 m		7.5 m		AT MAX REACH						
	FRONT	SIDE	FRONT	SIDE	FRONT	SIDE	FRONT	SIDE	FRONT	SIDE	FRONT	SIDE					
+9.0 m												10.6*	10.6*	3.73			
+7.5 m							7.4*	7.4*						5.8*	5.2	5.8	
+6.0 m							7.6*	7.5*	6.2*	5.1				5.0*	3.9	6.97	
+4.5 m							11.9*	11.9*	8.8*	7.4*	6.5*	5.0*	5.1*	3.4*	4.6*	3.3	7.68
+3.0 m							12.3*	13.7	10.5*	7.0	7.3*	4.8	5.6*	3.3	4.6*	3.0	8.05
+1.5 m							16.4*	11.0	10.8*	6.5	7.9*	4.5	5.7	3.2	4.6*	2.8	8.12
0 m							16.8*	10.5	10.9*	6.1	7.9	4.2	5.7	3.1	4.9*	2.9	7.91
-1.5 m	19.6*	19.6*	16.2*	10.5	10.9*	6.0	7.7	4.1						5.1*	3.1	7.38	
-3.0 m	23.0*	23.0*	14.3*	10.8	9.4*	6.0	5.2*	4.0						4.2*	3.7	6.47	

### MONO BOOM - DIPPERSTICK 2400 mm

HEIGHT	RADIUS OF LOAD												REACH m	
	1.5 m		3.0 m		4.5 m		6.0 m		7.5 m		AT MAX REACH			
	FRONT	SIDE	FRONT	SIDE	FRONT	SIDE	FRONT	SIDE	FRONT	SIDE	FRONT	SIDE		
+7.5 m												4.9*	4.9*	5.59
+6.0 m							5.8*	4.9				4.7*	4.0	6.8
+4.5 m					7.3*	7.1	6.2*	4.7	4.9*	3.4	4.7*	3.4	7.52	
+3.0 m					8.9*	6.5	6.9*	4.5	5.9	3.3	5.0	3.1	7.9	
+1.5 m					10.3*	6.0	7.6*	4.2	5.7	3.2	5.3	2.9	7.97	
0 m			7.6*	7.6*	10.9*	5.8	7.7	4.1	5.6	3.1	5.4	3.0	7.76	
-1.5 m	8.6*	8.6*	12.7*	10.4	10.6*	5.7	7.6	4.0			5.9	3.2	7.22	
-3.0 m	13.4*	13.4*	12.8*	10.6	9.4*	5.8	7.0*	4.1			6.6*	3.9	6.29	
-4.5 m			9.1*	9.1*	6.7*	6.1*					6.4*	5.8	4.72	

### TRIPLE ARTICULATION - DIPPERSTICK 2400 mm

HEIGHT	RADIUS OF LOAD												REACH m				
	1.5 m		3.0 m		4.5 m		6.0 m		7.5 m		AT MAX REACH						
	FRONT	SIDE	FRONT	SIDE	FRONT	SIDE	FRONT	SIDE	FRONT	SIDE	FRONT	SIDE					
+9.0 m														5.1*	5.1*	4.43	
+7.5 m							7.0*	7.0*	4.3*	4.3*				4.4*	4.4	6.27	
+6.0 m							7.2*	7.2*	5.9*	5.1				4.2*	3.5	7.36	
+4.5 m							12.8*	12.8*	8.3*	7.3	6.2*	5.0	5.1*	3.4	4.1*	3.0	8.04
+3.0 m							14.4*	12.3	10.3*	7.0	6.9*	4.8	5.4*	3.3	4.2*	2.0	8.38
+1.5 m							16.0*	11.2	10.7*	6.5	7.8	4.4	5.7	3.2	4.2*	2.6	8.45
0 m	16.2*	16.2*	16.6*	10.5	10.7*	6.1	7.8	4.2	5.6	3.0	4.5*	2.7	8.25				
-1.5 m	16.7*	16.7*	16.4*	10.4	10.8*	5.9	7.7	4.0			4.9*	2.9	7.75				
-3.0 m	20.8*	20.8*	15.1*	10.6	9.9*	5.9	6.2*	4.0			4.2*	3.4	6.89				
-4.5 m			9.1*	9.1*													

### MONO BOOM - DIPPERSTICK 2940 mm

HEIGHT	RADIUS OF LOAD												REACH m	
	1.5 m		3.0 m		4.5 m		6.0 m		7.5 m		AT MAX REACH			
	FRONT	SIDE	FRONT	SIDE	FRONT	SIDE	FRONT	SIDE	FRONT	SIDE	FRONT	SIDE		
+7.5 m							4.2*	4.2*				3.5*	3.5*	6.27
+6.0 m							5.3*	5.0				3.4*	3.4*	7.36
+4.5 m							5.8*	4.8	5.1*	3.5	3.4*	3.1	8.04	
+3.0 m			12.8*	11.9	8.3*	6.7	6.6*	4.6	5.7*	3.3	3.5*	2.9	8.39	
+1.5 m			7.1*	7.1*	9.9*	6.2	7.4*	4.3	5.8	3.2	3.8*	2.7	8.46	
0 m			8.3*	8.3*	10.8*	5.9	7.7	4.1	5.7	3.1	4.4*	2.8	8.25	
-1.5 m	7.6*	7.6*	11.7*	10.4	10.8*	5.8	7.6	4.0	5.6	3.1	5.3*	3.0	7.75	
-3.0 m	11.3*	11.3*	14.0*	10.5	10.0*	5.8	7.5*	4.0			6.3*	3.4	6.9	
-4.5 m			10.9*	10.9	8.0*	6.0					6.3*	4.7	5.51	

### TRIPLE ARTICULATION - DIPPERSTICK 2940 mm

HEIGHT	RADIUS OF LOAD												REACH m				
	1.5 m		3.0 m		4.5 m		6.0 m		7.5 m		AT MAX REACH						
	FRONT	SIDE	FRONT	SIDE	FRONT	SIDE	FRONT	SIDE	FRONT	SIDE	FRONT	SIDE					
+9.0 m							5.8*	5.8*						3.6*	3.6*	5.33	
+7.5 m							6.3*	6.3*	5.4*	5.0				3.1*	3.1*	6.93	
+6.0 m							6.6*	6.6*	5.5*	5.1	4.4*	3.4	3.0*	3.0*	7.93		
+4.5 m							11.2*	11.2*	7.6*	7.3	5.8*	5.1	4.9*	3.5	3.0*	2.8	8.56
+3.0 m							15.0*	12.4	9.8*	7.2	6.5*	4.8	5.1*	3.4	3.0*	2.6	8.89
+1.5 m							15.7*	11.8	10.7*	6.7	7.5*	4.6	5.5*	3.3	3.2*	2.5	8.95
0 m	11.4*	11.4*	16.5*	10.8	10.7*	6.2	7.8	4.3	5.7*	3.1	3.6*	2.5	8.76				
-1.5 m	14.0*	14.0*	15.5*	10.5	10.9*	5.9	7.8	4.1	5.6	3.0	4.1*	2.6	8.29				
-3.0 m	16.8*	16.8*	12.0*	10.9	10.5*	5.9	7.2*	3.8			4.3*	3.0	7.49				
-4.5 m	19.9*	19.9*	18.5*	18.5*	7.2*	5.9											

### MONO BOOM - DIPPERSTICK 3500 mm

HEIGHT	RADIUS OF LOAD												REACH m	
	1.5 m		3.0 m		4.5 m		6.0 m		7.5 m		AT MAX REACH			
	FRONT	SIDE	FRONT	SIDE	FRONT	SIDE	FRONT	SIDE	FRONT	SIDE	FRONT	SIDE		
+7.5 m												3.1*	3.1*	6.82
+6.0 m									3.7*	3.5	3.0*	3.0*	7.84	
+4.5 m							5.2*	4.8	4.9*	3.4	3.0*	2.8	8.47	
+3.0 m			10.8*	10.8*	7.4*	6.8	6.0*	4.5	5.3*	3.3	3.1*	2.6	8.81	
+1.5 m			10.7*	10.7*	9.2*	6.2	6.9*	4.2	5.7	3.1	3.4*	2.5	8.87	
0 m	4.2*	4.2*	9.2*	9.2*	10.4*	5.8	7.6*	4.0	5.5	3.0	3.8*	2.5	8.68	
-1.5 m	7.0*	7.0*	11.3*	10.1	10.7*	5.6	7.5	3.9	5.5	2.9	4.6*	2.6	8.21	
-3.0 m	10.0*	10.0*	14.9*	10.2	10.2*	5.6	7.5	3.8			5.6	3.0	7.4	
-4.5 m	13.7*	13.7*	12.3*	10.5	8.7*	5.7	6.3*	3.9			6.2	3.9	6.13	

### TRIPLE ARTICULATION - DIPPERSTICK 3500 mm

HEIGHT	RADIUS OF LOAD												REACH m			
	1.5 m		3.0 m		4.5 m		6.0 m		7.5 m		9.0 m			AT MAX REACH		
	FRONT	SIDE	FRONT	SIDE	FRONT	SIDE	FRONT	SIDE	FRONT	SIDE	FRONT	SIDE		FRONT	SIDE	
+9.0 m														3.1*	3.1*	6.03
+7.5 m									4.9*	4.9*				2.8*	2.8*	7.48
+6.0 m									5.0*	5.0	4.3*	3.6		2.7*	2.7*	8.42
+4.5 m							6.7*	6.7*	5.3*	4.9*	4.5*	3.6		2.6*	2.5	9.01
+3.0 m	19.3*	19.3*	14.2*	12.4	8.5*	7.1	6.0*	4.8	4.7*	3.4	2.8*	1.6	2.7*	2.3	9.32	
+1.5 m	10.3*	10.3*	15.3*	12.0	10.4*	6.7	6.9*	4.6	5.1*	3.2	3.8*	2.3	2.9*	2.2	9.38	
0 m	10.8*	10.8*	16.1*	10.9	10.5*	6.2	7.7	4.2	5.5*	3.0			3.2*	2.2	9.2	
-1.5 m	12.8*	12.8*	16.4*	10.4	10.6*	5.8	7.6	4.0	5.5	2.9			3.7*	2.3	8.76	
-3.0 m	15.0*	15.0*	16.1*	10.2	10.6*	5.7	7.5	3.8	4.3*	2.9			4.2*	2.6	8.01	
-4.5 m	16.7*	16.7*	13.9*	10.5	8.6*	5.7	4.9*	3.9					3.5*	3.2	6.86	

All the lift capacity values are in tonnes and without bucket

As per ISO 10567 with excavator equipped with bucket. The indicated load is no more than 87% of hydraulic system lifting capacity or 75% of static tipping load. Values marked with an asterisk are limited by the hydraulic system.



# LIFTING CAPACITY

## LCVERSION

### MONO BOOM - DIPPERSTICK 2080 mm

HEIGHT	RADIUS OF LOAD												REACH m	
	1.5 m		3.0 m		4.5 m		6.0 m		7.5 m		AT MAX REACH			
	FRONT	SIDE	FRONT	SIDE	FRONT	SIDE	FRONT	SIDE	FRONT	SIDE	FRONT	SIDE		
+7.5 m												6.4*	6.4*	5.12
+6.0 m							6.2*	5.8				6.2*	5.2	6.42
+4.5 m			10.9*	10.9*	7.8*	7.8*	6.6*	5.6				6.1*	4.3	7.19
+3.0 m					9.5*	7.9	7.3*	5.4	6.0	4.0		5.9	3.9	7.58
+1.5 m					10.7*	7.5	7.9*	5.1	5.9	3.9		5.7	3.8	7.65
0 m						7.3	7.9	5.0				5.9	3.9	7.43
-1.5 m			13.5*	13.5*	10.5*	7.3	7.8	5.0				6.5	4.2	6.87
-3.0 m			11.9*	11.9*	9.1*	7.4						6.9*	5.2	5.88
-4.5 m												6.3*	6.3*	4.15

### MONO BOOM - DIPPERSTICK 2400 mm

HEIGHT	RADIUS OF LOAD												REACH m	
	1.5 m		3.0 m		4.5 m		6.0 m		7.5 m		AT MAX REACH			
	FRONT	SIDE	FRONT	SIDE	FRONT	SIDE	FRONT	SIDE	FRONT	SIDE	FRONT	SIDE		
+7.5 m												4.9*	4.9*	5.59
+6.0 m							5.8*	5.8*				4.7*	4.7*	6.8
+4.5 m					7.3*	7.3*	6.2*	5.6	4.9*	4.1		4.7*	4.0	7.52
+3.0 m					8.9*	8.0	6.9*	5.4	5.9	3.9		5.0*	3.7	7.9
+1.5 m					10.3*	7.5	7.6*	5.1	5.8	3.8		5.3	3.5	7.97
0 m			7.6*	7.6*	10.9*	7.2	7.8	4.9	5.7	3.7		5.5	3.6	7.76
-1.5 m	8.6*	8.6*	12.7*	12.7*	10.6*	7.1	7.7	4.9				6.0	3.9	7.22
-3.0 m	13.4*	13.4*	12.8*	12.8*	9.5*	7.3	7.0*	5.0				6.6*	4.7	6.29
-4.5 m			9.1*	9.1*	6.8*	6.8*						6.4*	6.4*	4.72

### MONO BOOM - DIPPERSTICK 2940 mm

HEIGHT	RADIUS OF LOAD												REACH m	
	1.5 m		3.0 m		4.5 m		6.0 m		7.5 m		AT MAX REACH			
	FRONT	SIDE	FRONT	SIDE	FRONT	SIDE	FRONT	SIDE	FRONT	SIDE	FRONT	SIDE		
+7.5 m							4.2*	4.2*				3.5*	3.5*	6.27
+6.0 m							5.3*	5.3*				3.4*	3.4*	7.36
+4.5 m							5.8*	5.7	5.1*	4.1		3.4*	3.4*	8.04
+3.0 m			12.9*	12.9*	8.3*	8.2	6.6*	5.5	5.7*	4.0		3.5*	3.4	8.39
+1.5 m			7.1*	7.1*	9.9*	7.6	7.4*	5.2	5.8	3.9		3.8*	3.3	8.46
0 m			8.3*	8.3*	10.8*	7.3	7.8	5.0	5.7	3.8		4.4*	3.3	8.25
-1.5 m	7.7*	7.7*	11.7*	11.7*	10.8*	7.2	7.7	4.9	5.7	3.7		5.3*	3.6	7.75
-3.0 m	11.3*	11.3*	14.1*	13.7*	10.0*	7.2	7.5	4.9				6.3*	4.2	6.9
-4.5 m			11.0*	11.0*	8.0*	7.4						6.4*	5.7	5.51

### MONO BOOM - DIPPERSTICK 3500 mm

HEIGHT	RADIUS OF LOAD												REACH m	
	1.5 m		3.0 m		4.5 m		6.0 m		7.5 m		AT MAX REACH			
	FRONT	SIDE	FRONT	SIDE	FRONT	SIDE	FRONT	SIDE	FRONT	SIDE	FRONT	SIDE		
+7.5 m												3.1*	3.1*	6.82
+6.0 m									3.7*	3.7*		3.0*	3.0*	7.84
+4.5 m							5.2*	5.2*	4.9*	4.1		3.0*	3.0*	8.47
+3.0 m			10.8*	10.8*	7.4*	7.4*	6.0*	5.4	5.3*	3.9		3.1*	3.1*	8.81
+1.5 m			10.7*	10.7*	9.2*	7.6	6.9*	5.1	5.8*	3.8		3.4*	3.0	8.87
0 m	4.2*	4.2*	9.2*	9.2*	10.4*	7.2	7.6*	4.9	5.6	3.6		3.8*	3.0	8.68
-1.5 m	7.0*	7.0*	11.3*	11.3*	10.7*	7.0	7.6	4.7	5.5	3.6		4.6*	3.2	8.21
-3.0 m	10.0*	10.0*	14.9*	13.4	10.3*	7.0	7.6	4.7				5.7*	3.6	7.4
-4.5 m	13.7*	13.7*	12.4*	12.4*	8.8*	7.1	6.4	4.8				6.2*	4.7	6.13

### TRIPLE ARTICULATION - DIPPERSTICK 2080 mm

HEIGHT	RADIUS OF LOAD												REACH m	
	1.5 m		3.0 m		4.5 m		6.0 m		7.5 m		AT MAX REACH			
	FRONT	SIDE	FRONT	SIDE	FRONT	SIDE	FRONT	SIDE	FRONT	SIDE	FRONT	SIDE		
+7.5 m												7.4*	7.4*	5.12
+6.0 m							7.6*	7.6*	6.2*	5.8*		5.0*	4.6*	6.97
+4.5 m			11.9*	11.9*	8.8*	8.5	6.5*	5.8	5.1*	4.1		4.6*	3.9	7.68
+3.0 m			13.7*	13.7*	10.5*	8.3	7.3*	5.6	5.6*	4.0		4.6*	3.6	8.05
+1.5 m			16.4*	14.3	10.8*	8.0	8.0	5.4	5.8	3.8		4.6*	3.4	8.12
0 m			16.8*	13.7	10.9*	7.5	8.0	5.1	5.7	3.7		4.9*	3.5	6.94
-1.5 m	19.6*	19.6*	16.2*	13.7	10.9*	7.4	7.8*	5.0				5.1*	3.8	7.38
-3.0 m	23.0*	23.0*	14.3*	14.0*	9.4*	7.4*	5.2*	4.9				4.2*	4.2*	6.48

### TRIPLE ARTICULATION - DIPPERSTICK 2400 mm

HEIGHT	RADIUS OF LOAD												REACH m	
	1.5 m		3.0 m		4.5 m		6.0 m		7.5 m		AT MAX REACH			
	FRONT	SIDE	FRONT	SIDE	FRONT	SIDE	FRONT	SIDE	FRONT	SIDE	FRONT	SIDE		
+9.0 m												5.1*	5.1*	4.4
+7.5 m							7.0*	7.0*	4.3*	4.3*		4.4*	4.4*	6.2
+6.0 m							7.2*	7.2*	5.9*	5.8		4.2*	4.2*	7.3
+4.5 m			12.8*	12.8*	8.3*	8.3*	6.2*	5.7*	5.1*	4.1		4.1*	3.6	8.0
+3.0 m			14.4*	14.4*	10.3*	8.3	6.9*	5.6*	5.4*	4.0		4.2*	3.3	8.3
+1.5 m			16.0*	14.5*	10.7*	8.0*	7.9*	5.4*	5.8*	3.8		4.2*	3.2	8.4
0 m	16.2*	16.2*	16.6*	13.7*	10.7*	7.5*	7.9*	5.1*	5.7*	3.7		4.5*	3.2	8.2
-1.5 m	16.7*	16.7*	16.4*	13.6*	10.8*	7.3*	7.8*	4.9*				4.9*	3.5	7.7
-3.0 m	20.8*	20.8*	15.1*	13.8*	9.9*	7.3*	6.2*	4.9*				4.2*	4.1*	6.8
-4.5 m			9.1*	9.1*										

### TRIPLE ARTICULATION - DIPPERSTICK 2940 mm

HEIGHT	RADIUS OF LOAD												REACH m		
	1.5 m		3.0 m		4.5 m		6.0 m		7.5 m		AT MAX REACH				
	FRONT	SIDE	FRONT	SIDE	FRONT	SIDE	FRONT	SIDE	FRONT	SIDE	FRONT	SIDE			
+9.0 m							5.8*	5.8*				3.6*	3.6*	5.33	
+7.5 m							6.3*	6.3*	5.4*	5.4*		3.1*	3.1*	6.93	
+6.0 m							6.6*	6.6*	5.5*	5.5*	4.4*	4.1	3.0*	3.0*	7.93
+4.5 m			11.2*	11.2*	7.6*	7.6*	5.8*	5.8	4.9*	4.2		3.0*	3.0*	8.56	
+3.0 m	12.0	12.0	15.0*	14.8*	9.8*	8.4	6.5*	5.7	5.1*	4.1		3.0*	3.0*	8.89	
+1.5 m	18.5*	18.5*	15.7*	14.6	10.7*	8.1	7.5*	5.4	5.5*	3.9		3.2*	3.0	8.95	
0 m	11.3*	11.3*	16.5*	14.0	10.7*	7.7	7.9	5.2	5.8	3.7		3.6*	3.0	8.76	
-1.5 m	14.0*	14.0*	16.6*	13.6	10.9*	7.4	7.9	5.0	5.7	3.6		4.1*	3.2	8.29	
-3.0 m	16.8*	16.8*	15.5*	13.7	10.5*	7.3	7.2*	4.9				4.3*	3.7	7.5	
-4.5 m	19.9*	19.9*	12.0*	12.0*	7.2*	7.2*									

### TRIPLE ARTICULATION - DIPPERSTICK 3500 mm

HEIGHT	RADIUS OF LOAD												REACH m		
	1.5 m		3.0 m		4.5 m		6.0 m		7.5 m		AT MAX REACH				
	FRONT	SIDE	FRONT	SIDE	FRONT	SIDE	FRONT	SIDE	FRONT	SIDE	FRONT	SIDE			
+9.0 m												3.1*	3.1*	6.03	
+7.5 m									4.9*	4.9*		2.8*	2.8*	7.48	
+6.0 m									5.0*	5.0*	4.3*	4.1	2.7*	2.7*	8.42
+4.5 m							6.7*	6.7*	5.3*	5.3*	4.5*	4.2	2.6*	2.6*	9.01
+3.0 m	19.3*	19.3*	14.2*	14.2*	8.5*	8.2	6.0*	5.5*	4.7*	4.1		2.7*	2.7*	9.32	
+1.5 m	10.3*	10.3*	15.3*	14.4*	10.4*	8.1	6.9*	5.3	5.1*	3.9		2.9*	2.7*	9.38	
0 m	10.8*	10.8*	16.1*	14.2	10.5*	7.7	7.7*	5.2	5.5*	3.7		3.2*	2.7	9.2	
-1.5 m	12.8*	12.8*	16.4*	13.6	10.6*	7.3	7.7	4.9	5.6	3.5		3.7*	2.9	8.76	
-3.0 m	15.0*	15.0*	16.1*	13.4	10.6*	7.1	7.5*	4.7	4.3*	3.5		4.2*	3.2	8.01	
-4.5 m	16.7*	16.7*	13.9*	13.4*	8.6*	7.1*	4.9*	4.7				3.5*	3.5*	6.85	

All the lift capacity values are in tonnes and without bucket

As per ISO 10567 with excavator equipped with bucket. The indicated load is no more than 87% of hydraulic system lifting capacity or 75% of static tipping load. Values marked with an asterisk are limited by the hydraulic system.

# PARTS AND SERVICE

The New Holland dealer network is, in itself, the best guarantee of continued productivity for the machines it delivers to its customers. New Holland service technicians are fully equipped to resolve all maintenance and repair issues, with each and every service point providing the high standards they are obliged to observe under New Holland's stringent quality guidelines.

The New Holland global parts network ensures fast, reliable, replacement parts for less downtime, increased productivity and, of course, profitable operation for its customers.



## AT YOUR OWN DEALERSHIP

The information contained in this brochure is intended to be of general nature only. The NEW HOLLAND KOBELCO CONSTRUCTION MACHINERY S.p.A. company may at any time and from time to time, for technical or other necessary reasons, modify any of the details or specifications of the product described in this brochure. Illustrations do not necessarily show products in standard conditions. The dimensions, weights and capacities shown herein, as well as any conversion data used, are approximate only and are subject to variations within normal manufacturing techniques.

Published by NEW HOLLAND KOBELCO CONSTRUCTION MACHINERY S.p.A.  
Printed in Italy - MediaCross Firenze - Cod 30637GB - Printed 10/11

Printed on recycled paper  
CoC-FSC 000010 CQ Mixed sources



ELEMENTAL  
CHLORINE  
FREE  
GUARANTEED



[www.newholland.com](http://www.newholland.com)

