

# Meet

# DINO 220XSE

## DINO® BOOM LIFTS

### Standard features in DINO 220XSE:

- 350 kg basket capacity, XXXL basket 1.3 x 2.4 m
- Additional material handling capability – lifting capacity up to 500 kg
- Full working envelope in all directions with full basket load
- Basket mounted on forks with a safe, lockable quick-release mechanism
- Permanent 4WD, 40 % gradeability, oscillating axle
- Fully operational and safely drivable with up to 5 degrees tilt
- Continuous boom rotation and direction sensing driving
- DINO SafeGuard secondary guarding



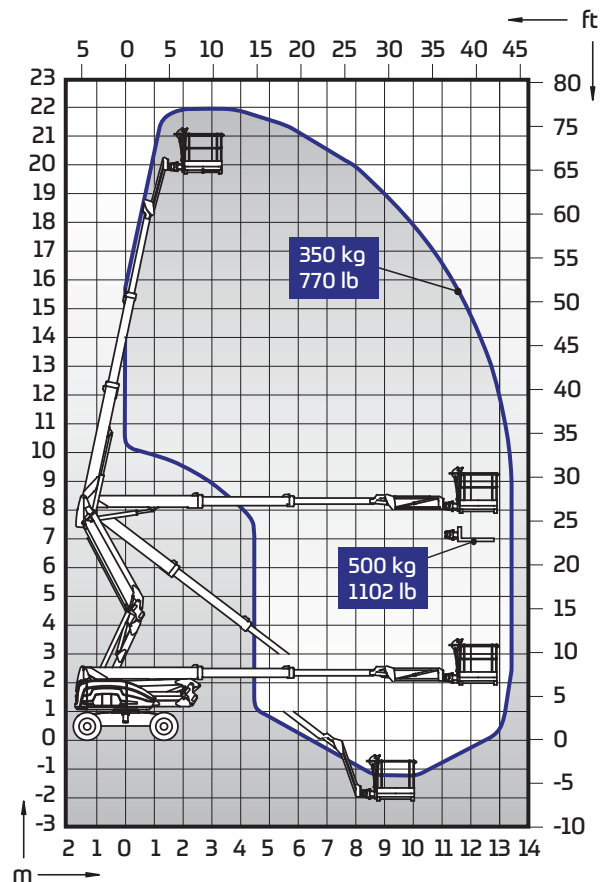
### Options available for DINO 220XSE:

- Hydraulically operated outriggers with automatic levelling - enable working in up to 12° inclination and fast set up
- Radio control for perfect visibility all round
- Multiple basket and material handling options
- Lifting hook for 500 kg
- DINO SkyRack, plate and tube rack
- Basket for materials 1.3 x 1.7 m
- Hydraulic generator 5kW
- Non-marking tyres
- LED driving lights and working lights in basket

### Technical data

	Metric	Imperial
Max. working height	21.95 m	72 ft 1 in
Max. outreach	13.40 m	43 ft 12 in
Lifting capacity	350 / 500 kg	770 / 1102 lb
Basket size	1.3 x 2.4 m	4 ft 3 in x 7 ft 10 in
Boom rotation	cont.	cont.
Basket rotation	180°	180°
Jib	1.6 m / 150°	5 ft 3 in / 150°
Transport length *	8.15 m	26 ft 9 in
Transport width	2.55 m	7 ft 8 in
Basket detached	2.33 m	7 ft 7 in
Transport height	2.56 m	8 ft 5 in
Up and over	8.45 m	27 ft 9 in
Weight *	11900 kg	26230 lb
Diesel engine	Deutz 36.3 kW	Deutz 36.3 kW
Max. levelling inclination	5° (12°)	5° (12°)
Gradeability (4WD)	40 %	40 %
Drive speed	6.0 / 1.0 km / h	3.7 / 0.6 mph
Ground clearance	0.43 m	1 ft 5 in
Wheelbase	2.67 m	8 ft 9 in
Outside turning radius 2WS	5.50 m	18 ft
Tailswing	0.60 m	1 ft 12 in
Tyres	355 / 55D625	355 / 55D625
Hydraulic outriggers	option	option
R / C control	option	option
Other information	100% differential lock + limited slip Secondary guarding	

\*) with std specification, basket mounted on forks



# DINOLIFT

UP TO THE JOB

DINOLIFT Oy | Raikkolantie 145 • FI-32210 LOIMAA, FINLAND

Tel: +358 (0)20 1772 400 • E-mail: info@dinolift.com

Read more: [www.dinolift.com](http://www.dinolift.com)

Technical specifications are subject to change without prior notice.

©Dinolift Oy | 23.5.2017