

AFTER SALES SUPPORT

LiuGong has a strong network of sales & services offices at key locations in India. Our dealer guarantees timely support and maintenance of machine service round the clock.

CREATED IN INDIA. CREATED TO LAST.

Tapping the global market, LiuGong announced its first overseas expansion with an estimated capital of Rs. 30 millions in the form of setting up a manufacturing base in India in 2009. With a sprawling 177,000 square meters lush green campus, LiuGong established a full-fledged manufacturing plant at Pithampur near Indore, often called as "Detroit of India" and the home of many international companies. The facility has a capacity of manufacturing 3000 equipments in a year.

The company supports the product lines with a growing network of more than 18 dealers and strategically located 55 touch points in 29 states. LiuGong fully supports the customers with a complete range of reliable construction machinery, through a wide range of network and strong after sales support.



Engine	Cummins QSB 7
Gross Power	120KW (161hp)
Maximum Digging Depth	5,875mm
Bucket Capacity	0.73m ³ - 1.2 m ³
Operating Weight	22,000 kg
Track Length	4456mm (LC)

922D HD

EXCAVATOR



Always a LiuGong dealer near you.



Corporate Office:
82, Okhla Phase III, New Delhi- 110020, Tel: 011-47272200
india@liugong.com

Manufacturing Plant:
Plot No. 163, Industrial Area, Sector-III, Pithampur
Dist.- Dhar, Madhya Pradesh- 454774, Tel: 07292-416700

www.liugong.com/en_in



11/2017 Designed by LiuGong India

The LiuGong series of logos herein, including but not limited to word marks, device marks, letter of alphabet marks and combination marks, as the registered trademarks of Guangxi Liugong Group Co., Ltd. are used by Guangxi Liugong Machinery Co., Ltd. with legal permission, and shall not be used without permission. Specifications and designs are subject to change without notice. Machines shown may include optional equipment and may not include all standard equipment. Like and follow us.

TOUGH WORLD. TOUGH EQUIPMENT.

E- Economy and P- Power mode

Dual power selection modes saves fuel without compromising performance.



10 Working Speeds

Variable speed selection according to work nature which leads to optimum performance & increased efficiency



High Performance

Fast swing, Powerful digging and crowding force makes operation fast & efficient.



Reliability and Durability

Strong undercarriage box type frame, tracks, heavy duty reinforced boom & arm for high durability & strength.



Controllability

Advanced hydraulic system for smooth precise and highly responsive operation. Fast combines work operation & travel by prioritizing oil flow according to requirement.



Comfortable Cab

Wide spacious cab offers 360° visibility, equipped with ergonomically positioned controls to make environment comfortable for operator.



Auto Idle System

When Machine is not at work for 5 sec, auto idle system lowers the Engine rpm to optimum rpm, thus saves fuel.



GPS

Track and monitor your machine with the help of advanced GPS System anywhere anytime.



Engine

Powerful Cummins QSB 7 engine with High pressure Common Rail Direct Injection(hp CRDI) system delivers high power with lesser fuel consumption.



Serviceability

Easy serviceability from wide service windows, remotely mounted filters and ground level access to routine maintenance points for effortless service.

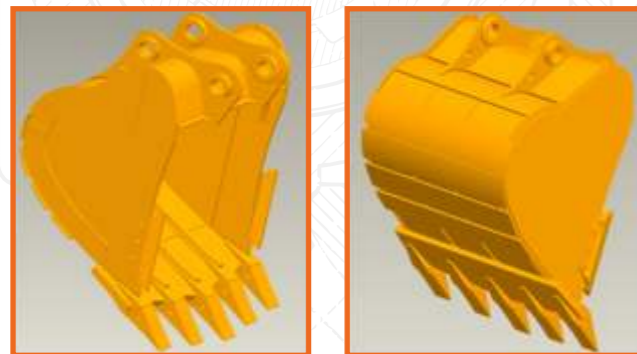
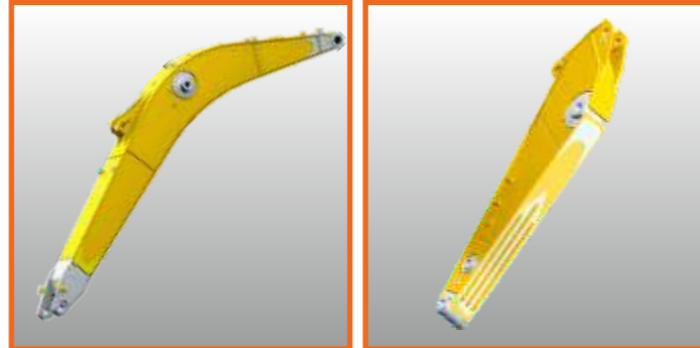




RELIABILITY

Designed for Heavy Duty

- Extra reinforced Boom & Arm provides durability in tough working conditions.
- Wear ribs prevents the arm from denting & external damage, protect the arm bottom from loaded boulder.
- Internal cross members in Boom & Arm increases rigidity to resist torsion.



Strong optimized bucket

- Reinforced Bucket is designed specially to withstand the impact encountered while handling boulders.
- Optimized width, depth & cutting angle for maximum productivity.
- Special reinforcement plates of high wear resistant material.
- Bucket available in range from 0.73 m³ to 1.2 m³

Strong Undercarriage

- X type box frame with outstanding resistant and torsion strength.
- 8 Lower rollers and 2 upper roller per side
- 4,456mm long crawler and 600mm wide track for better stability.
- Grease sealed lubrication track chain.
- Heavy duty track shoes 600mm width.

The design of the frame is made of thicker steel plates, that increase the durability.



POWER



HIGH BUCKET DIGGING FORCE 159KN



HIGH ARM CROWDING FORCE 113KN



HIGH TRACTION FORCE WITH DRAWBAR PULL 195KN



POWERFUL SWING FOR SHORT CYCLE TIME 12RPM



Powerful Engine:

Cummins QSB 7, best known for its high performance & reliability, comes with high pressure Common rail direct injection system (hp-CRDI) delivers superior performance and fuel efficiency.



Auto Idle System

- LiuGong's New-Generation Computer Aided Power Control (CAPC)
- One touch Idle for fuel saving.



Mode Selection:

E (Economy): for optimum production & lesser fuel consumption.
P (Power): for heavy jobs.



Powerful Hydraulic System

Negative flow hydraulic system, optimizing the performance of the pump, main control valve & cylinders that increase the speed of working equipment & reduces the hydraulic power losses.

- **Priority Function:** Boom & Swing priority Maximises output in different working condition.
- **Arm Regeneration:** Regenerative Circuit for higher operation speeds.
- **Two Speed Travel Modes:** Provides choice of travel speed based on working conditions.
- **Boost Function:** A touch of button gives the added power for working on heavy load condition.



OPERATOR COMFORT & SAFETY

ERGONOMICALLY DESIGNED CAB WITH GREAT VISIBILITY

Specifically designed for LiuGong D series excavator, this spacious cab is ergonomically designed for safer and more efficient operation. The glass windows are widened for excellent visibility, especially the right side downward view during travel and excavation. An enlarged skylight with rolling sunshade provides excellent visibility and good ventilation.

NEW MULTI-FUNCTIONAL COLOR LCD MONITOR

New LCD monitor with crystal clear display is positioned at a convenient location. Machine operational states, warnings, audible alarms and maintenance information are clearly displayed to help the operator.

REAR VIEW CAMERA

The rear view camera gives an exceptionally clear view of the rear work zone on the wide screen monitor.

REAR VIEW MIRROR

The rear view mirror help the operator to watch surrounding easily.

COMFORTABLE AND SAFE OPERATOR ENVIRONMENT

Air conditioner with heating function and auto feature keeps the cabin at comfortable temperature in hot and cold ambient conditions.

High-back suspension seat is adjustable for range of operators weight and height along with damping of vibrations.

SAFETY FIRST

- Engine does not start until pilot lever lock is open.
- Pilot lever lock provides additional safety against unintended machine operation.
- Top covers on engine hood and counterweight are designed to prevent slipping in wet, rainy and muddy conditions.
- Audio and visual alerts are provided to operator for malfunctioning of engine and machine parameters.

ESCAPE HAMMER

Escape hammer in cabin helps the operator to escape from cab incase of emergency.

CAB

The cab of machine meet International standard.

SERVICEABILITY

The 922D HD is designed for convenient maintenance. The engine is conveniently accessible when the rear hood is lifted up, it provides plenty of space for service.

Wide opening service windows and ground level access to all filters, routine maintenance points makes serviceability an easy task.

COOLING COMPARTMENT

Over flow bottle, washer bottle and air conditioner refrigerant are located close to cooling compartments for easy maintenance.



LIUGONG
Lubricants



LIUGONG
Workshop



LIUGONG
Genuine Parts



LIUGONG
Attachments



STANDARD EQUIPMENT

ENGINE SYSTEM

- Cummins US QSB 7 turbocharged, 6 Cylinder, 4 stroke, water cooled, Diesel Engine
- CAPC: Computer Aided Power Control
- Auto idle (Speed Deceleration)
- Air filter with pre-cleaner
- Engine oil filter
- Pre-filter with water separator
- Radiator, oil cooler and intercooler
- Automatic engine warm-up system
- Engine overheat prevention system

HYDRAULIC SYSTEM

- Power boost
- Boom and arm regeneration circuits
- Pilot oil filter
- Extra spool for attachment

OPERATOR STATION

- Highly pressurized and tightly sealed

cab with all-around visibility, large roof window with slide sun shade, front window wiper, removable lower window

- Air conditioner, heater, defroster
- Suspension seat with height adjustable arm rests and retractable seat belt
- AM/FM Radio with MP3 audio jack
- Color LCD monitor with alarms, filter/fluid change, fuel rate, water temperature, fault code, working hour, etc
- Pilot control shut-off lever
- Glass-breaking hammer
- Ashtray, cigarette lighter
- Cup holder
- Floor mat
- Storage box
- Cabin Protection guard (Front & Top)

UPPER STRUCTURE

- Rear view mirror (right left side)

- 2 batteries
- One key for door locks, cap locks
- Fuel gauge
- Hydraulic oil level gauge
- Storage box
- Swing parking brake
- Boom light - 2
- Head light - 2
- Frame light -1
- Cabin light - 1

UNDERCARRIAGE

- 600mm triple grouser track-shoes
- 2 track frame guards (each-side)
- Towing eye on base frame

FRONT ATTACHMENTS

- 5.68 m boom and 2.4 m arm
- 1.0 m³ General bucket

STANDARD FEATURE

- GPS

SPECIFICATION

ENGINE

Model	Cummins QSB 7
Type	6-cylinder, 4-stroke, in line, water-cooled, turbocharged, diesel engine.
Gross Power	120 kW(161 hp) @ 2,100 rpm
Net Power	117 kW(157 hp) @ 2,100 rpm
Maximum Torque	658 N·m @1,300 rpm
Bore x Stroke	107 x 124 mm
Displacement	6.7 L

DRIVE AND BRAKES

Driven by a one-piece two-gear piston hydraulic motor and reducer with small volume and strong traction; the motor and hydraulic pipelines are hidden in the track mechanism to prevent damage from rugged road surfaces; parking brake and shock-absorbing valve are installed inside the motor, ensuring stable travelling and parking as well as reliable braking.

Max. Travel Speed	High: 4.9 km / h Low: 2.9 km / h
Gradeability	35°(70%)
Drawbar Pull	195 kN

SWING SYSTEM

The high-torque piston swing motor, with integral spring set, and automatic hydraulic release swing brake, is bolted directly to the swing reduction planetary swing gear box. The swing brake automatically resets for safer operation within five seconds of the swing function lever being brought to neutral. This insures safe travel and parking conditions.

Swing Speed	12 rpm
-------------	--------

HYDRAULIC SYSTEM

Main Pump	Two variable displacement piston pumps
Main Pumps Total Flow	2 × 210 L/min
Relief Pressure, main	33.3 MPa

UNDERCARRIAGE

Center Frame	X-Frame
Track Adjustment	Hydraulic
Number of Carrier Rollers	2 each side
Number of Track Rollers	8 each side
Number of Idler Rollers	1 each side
Number of Shoes	49 each side
Width of Track Shoes	600 mm

ELECTRICAL SYSTEM

System Voltage	24 V
Batteries	2 x 12 V

SERVICE CAPACITIES

Fuel Tank	412 L
Engine Oil	25 L
Final Drive (each)	5.5 L
Swing Drive	3.4 L
Cooling System	30 L
Hydraulic Reservoir	230 L
Hydraulic System Total	330 L

OPERATING WEIGHT (≈)

The operating weight includes 5,680 mm boom, 2,400 mm arm, SAE heaped 1.0 m³ bucket, 600 mm shoes, operator, lubricating oil, cooling liquid, full fuel tank, and standard configuration.

Shoe Ground Pressure	0.0458 MPa
Operating Weight	22,000 kg

OPTIONAL EQUIPMENT AND ATTACHMENT

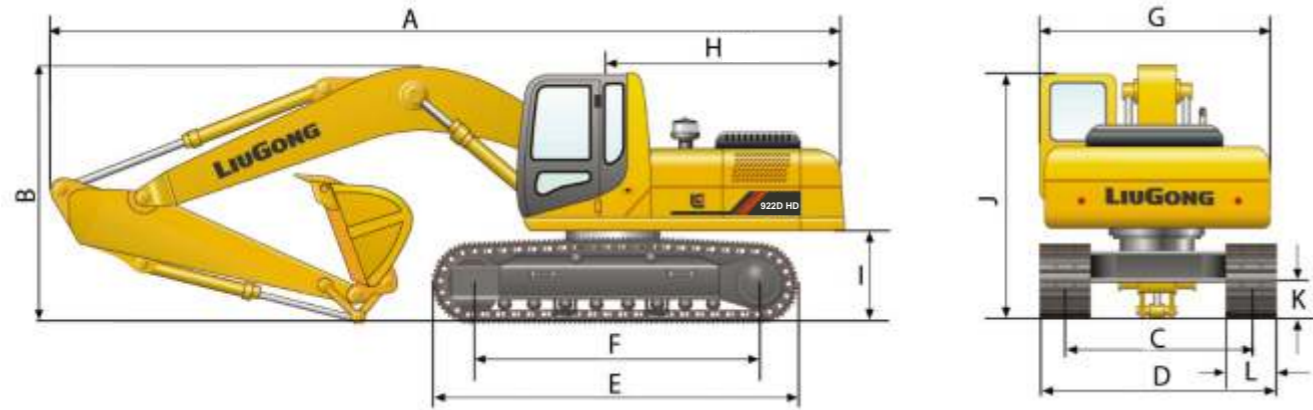
Boom/Arm holding Valves (2 on Boom 1 on Arm)
Control pattern change valve
Travel alarm
Rotating beacon
Power outlet 24V to 12V convertor

Refuel pump
Hammer piping
2 way aux. piping
Hydraulic jackhammer
Hydraulic quick coupler
Ripper Shank
800mm wide tracks
700mm wide tracks

0.73m³ narrow Bucket
0.87m³ HD bucket / rock bucket
0.9m³ wide bucket
0.95m³ HD Bucket
1.2m³ light duty bucket
Arm: 2,700mm / 2,910mm
Long reach Attachment:
Arm: 4,400mm,
Boom: 6,680mm



DIMENSIONS



Unit: mm

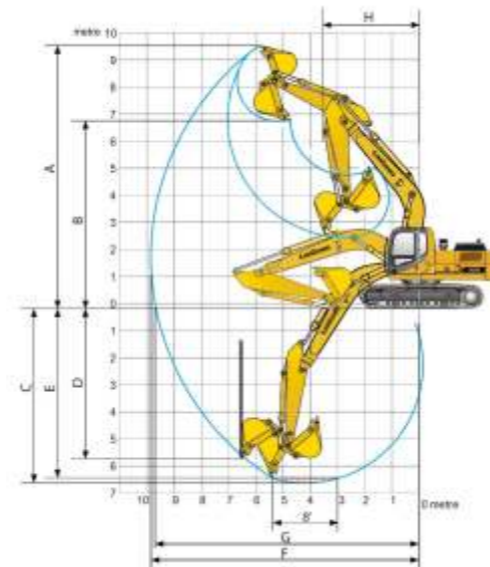
	Boom length	5,680
	Arm length	2,400
A	Overall length	9,712
B	Overall height of boom	3,050
C	Track gauge	2,390
D	Under Carriage Width	2,990
E	Overall length of crawler	4,456
F	Track length on ground	3,650

G	Overall width of upperstructure	2,700
H	Tail swing radius	2,860
I	Counterweight ground clearance	1,070
J	Overall height of cab	3,050
K	Min. ground clearance	440
L	Track shoe width	600

WORKING RANGE

Unit: mm

	Boom length	5,680
	Arm length	2,400
	Bucket capacity	1.2 m ³
A	Dig height	9,369
B	Dump height	6,594
C	Dig depth	5,875
D	Dig depth of vertical	4,578
E	Depth of 8 bottom	5,662
F	Max reach	9,435
G	Reach at ground level	9,256
H	Min swing radius	3,652
SAE	Bucket breakout force	133 kN
SAE	Arm breakout force	109 kN
ISO	Bucket breakout force	159 kN
ISO	Arm breakout force	113 kN



Note:

- ※ indicates the load is limited by hydraulic capacity rather than tipping capacity.
- The above rated loads are in compliance with ISO 10567 hydraulic excavator lift capacity rating standard. They do not exceed 87% of hydraulic lifting capacity or 75% tipping load.
- Ratings at bucket lift hook.



Rating over-side



Rating over-front

Bucket: SAE 1.2 m³, 950 kg Boom: 5,680 mm Arm: 2,400 mm Shoes: 600 mm Counterweight: 4,300 kg

Lift Point Height	3 m		4 m		5 m		6 m		7 m		At Max. Reach		
	kg	mm	kg	mm	kg	mm	kg	mm	kg	mm	kg	mm	mm
6 m	※3,750	3,740	※3,750	3,740	※3,800	3,740	6,800						
5 m	※4,280	4,280	※4,030	4,030	※3,920	3,500	※3,920	3,150	7,400				
4 m	※7,960	7,960	※6,000	6,000	※5,030	5,030	※4,480	4,460	※4,150	3,420	※4,050	2,950	7,600
3 m	※8,270	8,270	※7,630	7,630	※5,940	5,710	※5,030	4,280	※4,500	3,310	※4,230	2,750	7,800
2 m			※9,140	7,590	※6,840	5,440	※5,610	4,110	※4,860	3,220	※4,460	2,680	7,800
1 m			※10,180	7,300	※7,590	5,230	※6,110	3,980	※5,190	3,130	4,650	2,630	7,800
0	※5,920	5,920	※10,690	7,170	※8,100	5,110	※6,500	3,890	※5,460	3,060	4,610	2,590	7,800
-1 m	※9,020	9,020	※10,780	7,170	※8,310	5,070	※6,690	3,840	5,420	3,040	4,980	2,800	7,400
-2 m	※12,640	11,890	※10,530	7,230	※8,260	5,090	※6,670	3,850	5,460	3,070	5,460	3,070	7,000
-3 m	※12,930	12,100	※9,940	7,360	※7,880	5,170	※6,340	3,940			※5,800	3,570	6,400
-4 m	※11,390	11,390	※8,860	7,570	※7,010	5,320					※6,360	4,760	5,400

