

| | |
|-------------------------|-----------------------------|
| Engine | Cummins QSK19 |
| Gross Power | 391 kW (525 hp) @ 2,000 rpm |
| Net Power | 371 kW (499 hp) @ 2,000 rpm |
| Operating Weight | 50,600 kg |
| Standard Bucket Size | 7.0 m ³ |
| Standard Breakout Force | 385 kN |
| Standard Dump Clearance | 3,910 mm |

8128H WHEEL LOADER



TOUGH WORLD. TOUGH EQUIPMENT.

8128H SPECIFICATIONS >>>

ENGINE

| | |
|---------------------|---------------------------------------|
| Emission Regulation | Tier 3/Stage IIIA |
| Make | Cummins |
| Model | QSK19 |
| Gross Power | 391 kW (525 hp) @ 2,000 rpm |
| Net Power | 371 kW (499 hp) @ 2,000 rpm |
| Peak Torque | 2,407 N · m |
| Displacement | 19 L |
| Number of Cylinders | 6 |
| Aspiration | Turbocharged & Air-to-air intercooled |

TRANSMISSION

| | |
|---------------------------|------------------------------|
| Transmission Type | Countershaft, power shift |
| Torque Converter | Single stage, three elements |
| Maximum Travel Speed, fwd | 35.6 km/h |
| Maximum Travel Speed, rev | 35.6 km/h |
| Number of Speeds, fwd | 4 |
| Number of Speeds, rev | 4 |

AXLES

| | |
|-------------------------|--------------|
| Differential Front Type | Limited slip |
| Differential Rear Type | Conventional |
| Axle Oscillation | ± 12° |

STEERING

| | |
|--------------------------|-------------|
| Steering Configuration | Articulated |
| Steering Relief Pressure | 21 MPa |

BRAKES

| | |
|-------------------------|---------------------------|
| Service Brake Type | Wet discs brake |
| Service Brake Actuation | Hydraulic |
| Parking Brake Type | Manual electronic control |
| Parking Brake Actuation | Hydraulic |

HYDRAULIC SYSTEM

| | |
|--------------------------|--------|
| Main Pump Type | Piston |
| Main Relief Pressure | 26 MPa |
| Raise | 7.5 s |
| Dump Time | 2 s |
| Float Down Time | 3.7 s |
| Fastest Total Cycle Time | 13.2 s |

LOADER ARM PERFORMANCE

| | |
|---|-----------|
| Tipping Load - Straight | 38,400 kg |
| Tipping Load - Full Turn | 33,200 kg |
| Bucket Breakout Force | 385 kN |
| Maximum Dump Angle at Full Height | 45° |
| Dump Clearance at Full Height Discharge | 3,910 mm |
| Dump Reach at Full Height Discharge | 2,050 mm |
| Maximum Hinge Pin Height | 5,645 mm |
| Maximum Digging Depth, Bucket Level | 137 mm |
| Bucket Rollback at Ground Level | 43° |
| Bucket Rollback at Carry | 49° |
| Bucket Rollback at Maximum Height | 59° |

BUCKET PERFORMANCE

| | |
|------------------|--------------------|
| Reference Bucket | 7.0 m ³ |
|------------------|--------------------|

DIMENSIONS

| | |
|---------------------------------|-----------|
| Length with Bucket Down | 11,845 mm |
| Width Over Tires | 3,590 mm |
| Wheelbase | 4,550 mm |
| Wheel Tread | 2,710 mm |
| Ground Clearance | 488 mm |
| Turn Angle, Either Side | 43° |
| Rear Angle of Departure | 25° |
| Turning Radius, Outside of Tire | 7,620 mm |
| Turning Radius, Center of Tire | 7,130 mm |
| Turning Radius, Bucket Carry | 8,530 mm |

TIRES

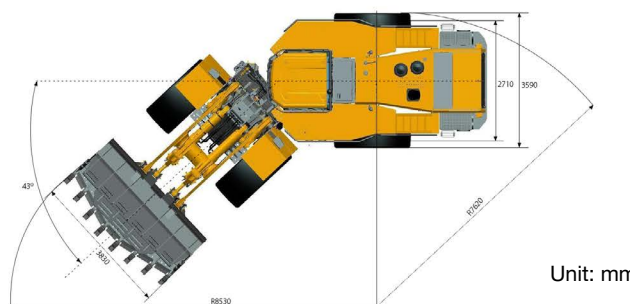
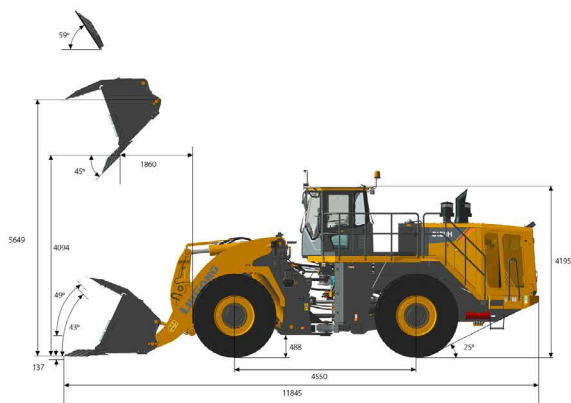
| | |
|-----------|------------|
| Tire Size | 35/65 R 33 |
|-----------|------------|

OPERATING WEIGHTS

| | |
|------------------|-----------|
| Operating Weight | 50,600 kg |
|------------------|-----------|

SERVICE CAPACITY

| | |
|-----------------------------------|-------|
| Fuel Tank | 730 L |
| Engine Oil | 60 L |
| Cooling System | 110 L |
| Hydraulic Reservoir | 420 L |
| Transmission and Torque Converter | 75 L |
| Axles, each | 105 L |



Unit: mm

Guangxi Liugong Machinery Co., Ltd.

No. 1 Liutai Road, Liuzhou, Guangxi 545007, PR China
T: +86 772 3886124 E: overseas@liugong.com
www.liugong.com

Specifications and designs are subject to change without notice. Machines shown may include optional equipment.

06/2015 Designed by LiuGong