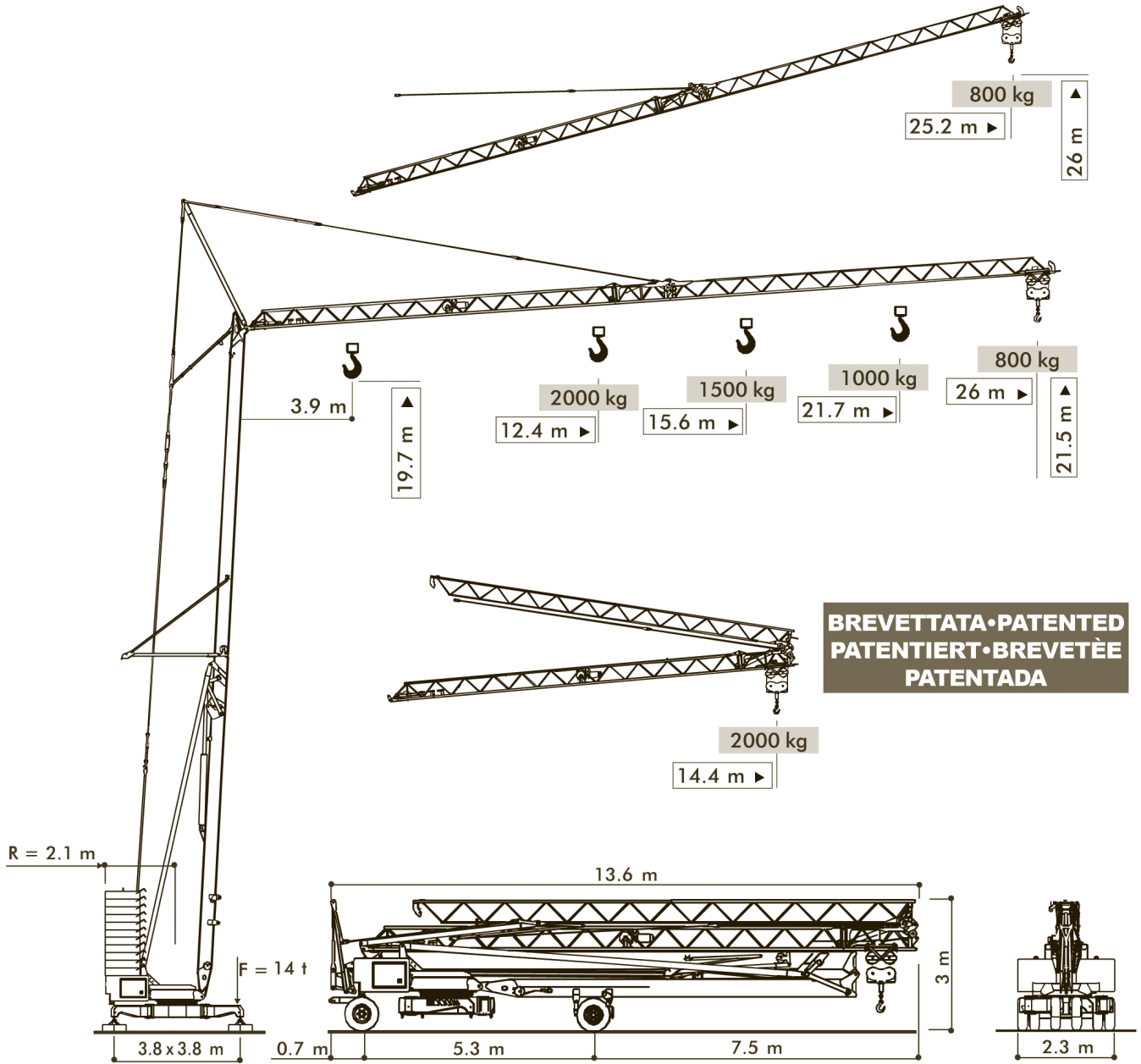


Snelmontagekraan  
 Grue à montage rapide  
 Schnelleinsatzkran  
 Self erecting crane

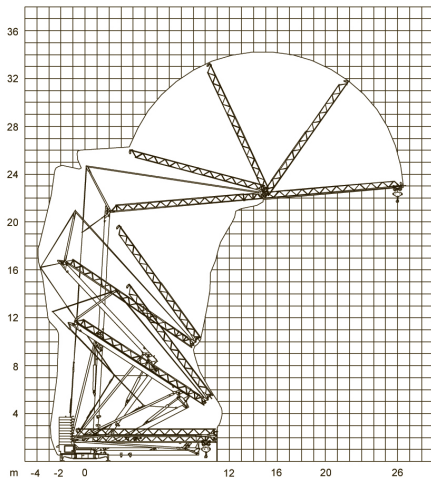
# CBR 26plus

Mono-Trifase • Single-Three phase • Mono-Triphasé • Ein-Dreiphasig • Mono-Trifasica

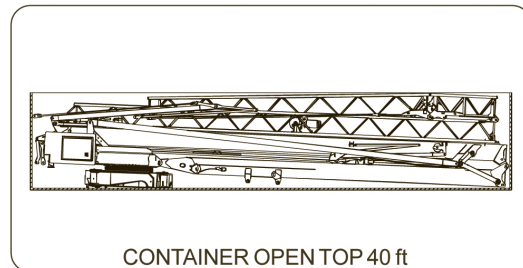
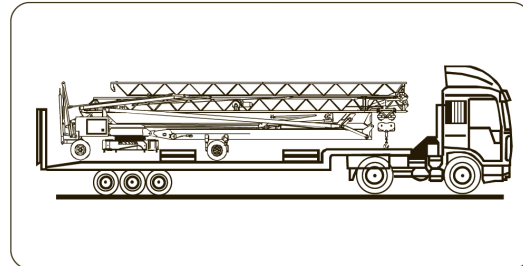


- movimenti controllati da inverter
- motions controlled by frequency converter
- Frequenzumrichter gesteuerte Bewegungen
- mouvements contrôlés par variateur
- movimientos controlados por variadores
- montaggio oleodinamico integrale
- full hydraulic erection
- vollhydraulische Montage
- montage hydraulique intégral
- montaje hidraulico integral
- trasportabile con zavorra di montaggio
- trailerable with erection ballast
- verfahrbar mit Montage-Ballast
- transportable avec lest de montage
- transportable con lastre de montaje

		3 kW - 230 V			6 kW - 230 V			10 kVA - 400 V			kW
		m/min		kg	m/min		kg	m/min		kg	
		▲	▼		▲	▼		▲	▼		
Sollevamento Hoisting Heben Levage Elevación		4	4	2000	4	4	2000	4	4	2000	5,5
		8	18	2000	16	18	2000	18	18	2000	
		16	34	800	28	34	800	34	34	800	
Distribuzione - Trolleying Katzfahren - Distribution Distribución		11 - 30		-	11 - 30		-	11 - 30		-	2,2
Rotazione - Slewing Schwenken - Orientation Orientación		0,2 ⇌ 0,9 tr/min-U/min-rpm									3 daNm
Montaggio - Erection - Montage - Montage - Montaje											2,2
Zavorra - Ballast - Ballast - Lest- Lastre										13350 kg	
Peso gru - Crane weight - Konstruktionsgewicht - Poids de la grue - Peso della grua										8200 kg	



CE 98/37CE - 2000/14/CE - 89/336 CEE  
DIN 15018 H1-B3  
DIN 15019/15020/4114



**ARCOMET**

Industrieweg 139 - 3583 Paal-Beringen - BELGIUM - T +32 (0)11 450 950 - EMAIL arcomet@arcomet.com - www.arcomet.com

**TEREX** | COMEDIL