



#### SIDE SUPPORT WHEEL

On request it can also be supplied in the roller version. It acts as an ideal safety end-of-stroke support when working near new-jersey (wheel) or guardrails (roller).



#### ADJUSTABLE SUPPORT WHEELS

On request, they run smoothly over the ground and are suitable when working at high speed or when rubber or plastic scraping edges are used.



#### AUXILIARY SPOTLIGHT KIT

Available on request, in compliance with current traffic regulations they back-up the vehicle lights and they are adjustable.



#### SPLASH GUARD

On request, with hydraulic regulation, it allows to orientate the snow discharging.



#### BLADE EXTENSION TYPE "F"

On request, it increases the shear height and it matches the bending, limiting the turbulence at high speed.



#### SIDE BUMPERS

On request, these prevent the blade from sticking into obstacles at the side of the road.



ASSALONI.COM S.p.A. 40042 Lizzano in Belvedere (BO) - Italy - Via Luigi Assaloni, 4  
Tel. +39-0534 51353 - Fax +39-0534 51583 info@assaloni.com www.assaloni.com



MOD. A90 - GB - Rev.2 04/11 The technical data are informative and not binding.



## A90 SNOWPLOUGH FOR MOTORWAYS

**A90.30**

**A90.35**

**A90.40**

**A90.45**

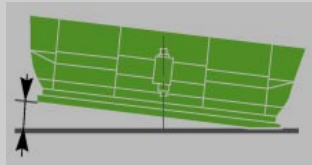
**A90.50**





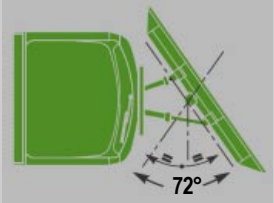
### OSCILLATION

A central oscillation system (patented) allows the blade to follow the road profile.



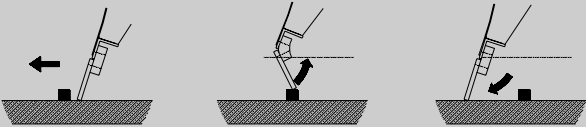
### ROTATION

Rotation angle from +36° to -36°



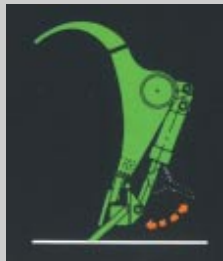
### POLYURETHANE INSERT

Fitted between the steel scraping edge and the blade it offers the elimination of any vibrations and the rotations of scraping edge when obstacles are encountered with automatic return to the working position once these have been exceeded.



### POLYURETHANE SCRAPING EDGE DEVICE

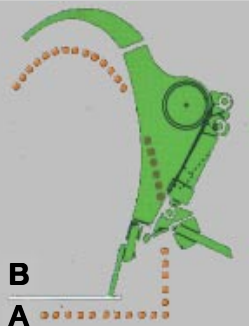
Available on request, two hydraulic pistons allow the polyurethane scraping edge insertion, to be used in alternative to the steel one.



### HYDRAULIC ADJUSTMENT OF THE ANGLE

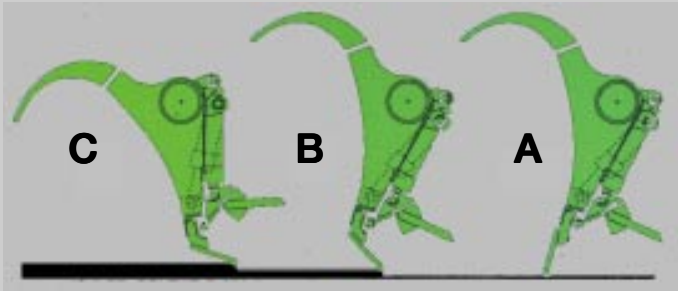
It allows to rotate the shear in all positions, also in intermediate positions between A and B points and usually for:

**POSITION A:** powdery snow or to scrape.  
**POSITION B:** heavy and wet snow or a lot of snow. Compulsory position when operating with polyurethane scraping edge.



### OBSTACLE SURPASSING SYSTEM

A) Working position.  
B) Polyurethane element allowing the rotation of the blade.  
C) Polyurethane element allowing the rotation of the blade and nitrogen accumulator allowing the rotation of the shear.



| TECHNICAL DATA                       | A90.30 | A90.35 | A90.40 | A90.45 | A90.50 |    |
|--------------------------------------|--------|--------|--------|--------|--------|----|
| Length of scraping edge              | 3000   | 3500   | 4000   | 4500   | 5000   | mm |
| Working width (36° max. inclination) | 2500   | 2900   | 3300   | 3700   | 4100   | mm |
| Blade height with STANDARD extension | 1020   | 1020   | 1020   | 1020   | 1020   | mm |
| Blade height with extension type F   | 1160   | 1160   | 1160   | 1160   | 1160   | mm |
| Minimum width for narrow passages    | 2700   | 3100   | 3500   | 3900   | 4300   | mm |
| Weight of standard version           | 850    | 900    | 950    | 1000   | 1050   | kg |



# A90 SNOWPLOUGH FOR MOTORWAYS

A90.30

A90.35

A90.40

A90.45

A90.50

**Monolithic snow plough, suitable for clearing snow at high speed. Equipped with hydraulic controls that allow not only right-left rotation, lifting-lowering operations, but also to adjust the blade angle of incidence on the road, in relation to snow quantity and type. It perfectly meets the operation and clearance quickness needs on highways or heavy traffic roads.**

### ADJUSTABLE OSCILLATION

Available on request, it offsets weight differences between right side and left side.

### CENTRAL OSCILLATION SYSTEM - PATENTED-

It locks the blade in the horizontal position with blade raised and frees it completely to follow the road profile with blade lowered in working position. Thanks to this device the scraping edge wears evenly.

### NITROGEN ACCUMULATOR

A nitrogen accumulator is inserted on the hydraulic system to allow the rotation of the shear, along its horizontal axis, and to reposition it once an obstacle has been cleared. This is an additional safety device together with the polyurethane insert.

### LED SIDE CLEARANCE LIGHTS

On request, they are resistant to vibrations and damp

### RAPID ATTACHMENT PLATE TO VEHICLE

Disponibile oltre che nella versione ASSALONI (brevetata) anche nelle versioni DIN 76060, o SETRA.

### BY-PASS VALVE

In the shock-absorbing system of the hydraulic rotation circuit it contributes in further absorbing impacts.

### RUBBER SPLASH GUARD

Installed on request, it limits snow splashes on the vehicle windscreen.

### SHEAR CURVATURE

The special profile, complete with bolted extension in sheet metal, perfectly discharges even large amount of snow.

### LATERAL EDGES

Available on request, in plastic material, they are ideal for clearing near new-jersey barriers and help discharge of the snow.

### STEEL SCRAPING EDGE

Available on request also in POLYURETHANE or KOMBI.

### SUPPORTING FEET

With mechanic height adjustment on the ground.

### ELECTRO-HYDRAULIC CONTROL UNIT

This can be installed on request on the attachment panel of the actuator blade.

### POLYURETHANE SCRAPING EDGE

Available on request. The blade is equipped with mounting arrangements.

### HYDROMECHANIC ACCUMULATOR WITH GRADUATE SCALE

In the lifting circuit, it allows to adjust the pressure on the road surface in order to avoid polyurethane scraping edge wear. The graduate scale is visible by the driver and it is equipped with average value marker, advised from the producer.

### QUICK ATTACHMENT OF SCRAPING EDGES-PATENTED-

A richiesta, permettono di facilitare ed abbreviare il montaggio dei coltelli.