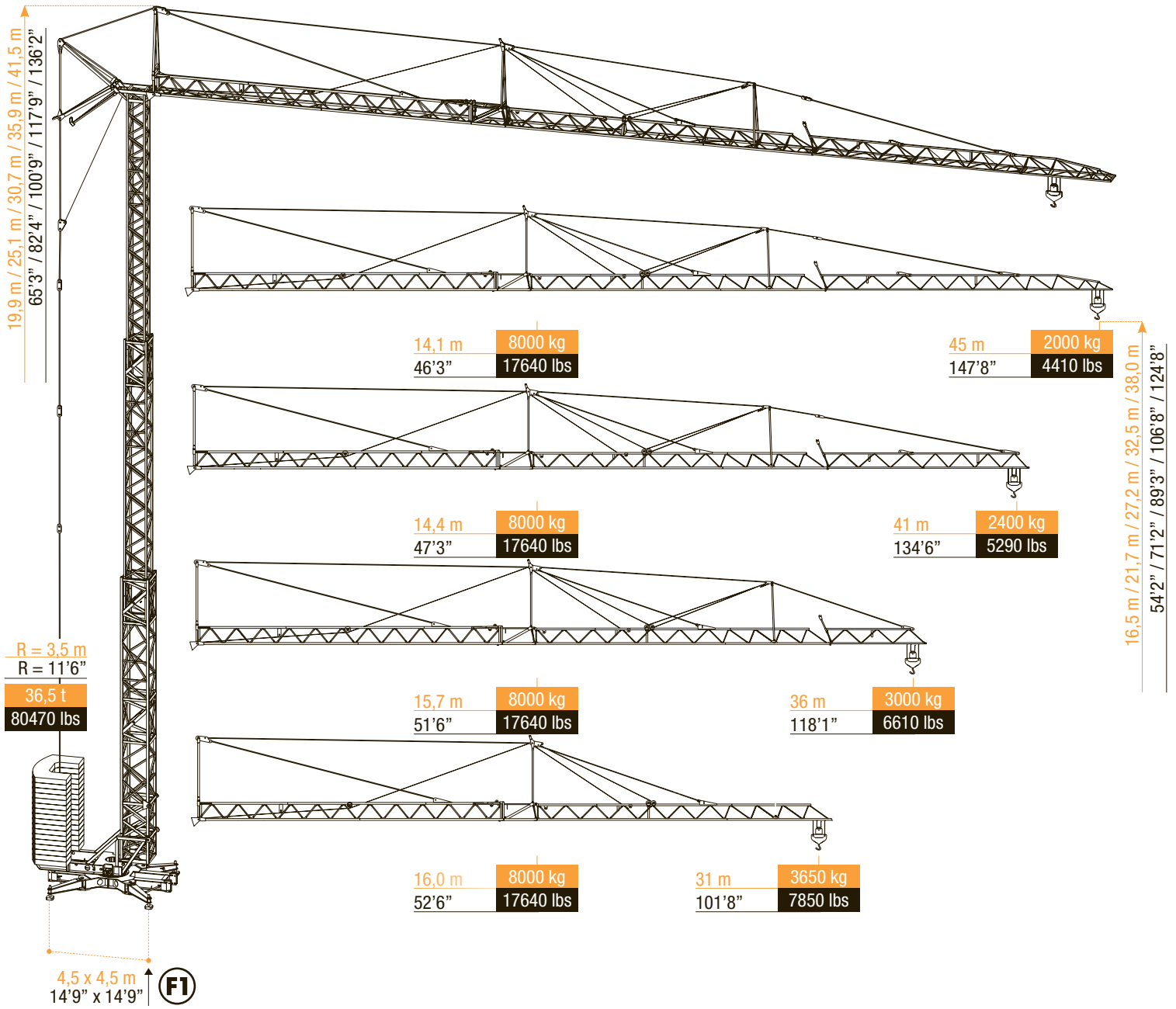


Snelmontagekraan  
 Grue à montage rapide  
 Schnelleinsatzkran  
 Self erecting crane

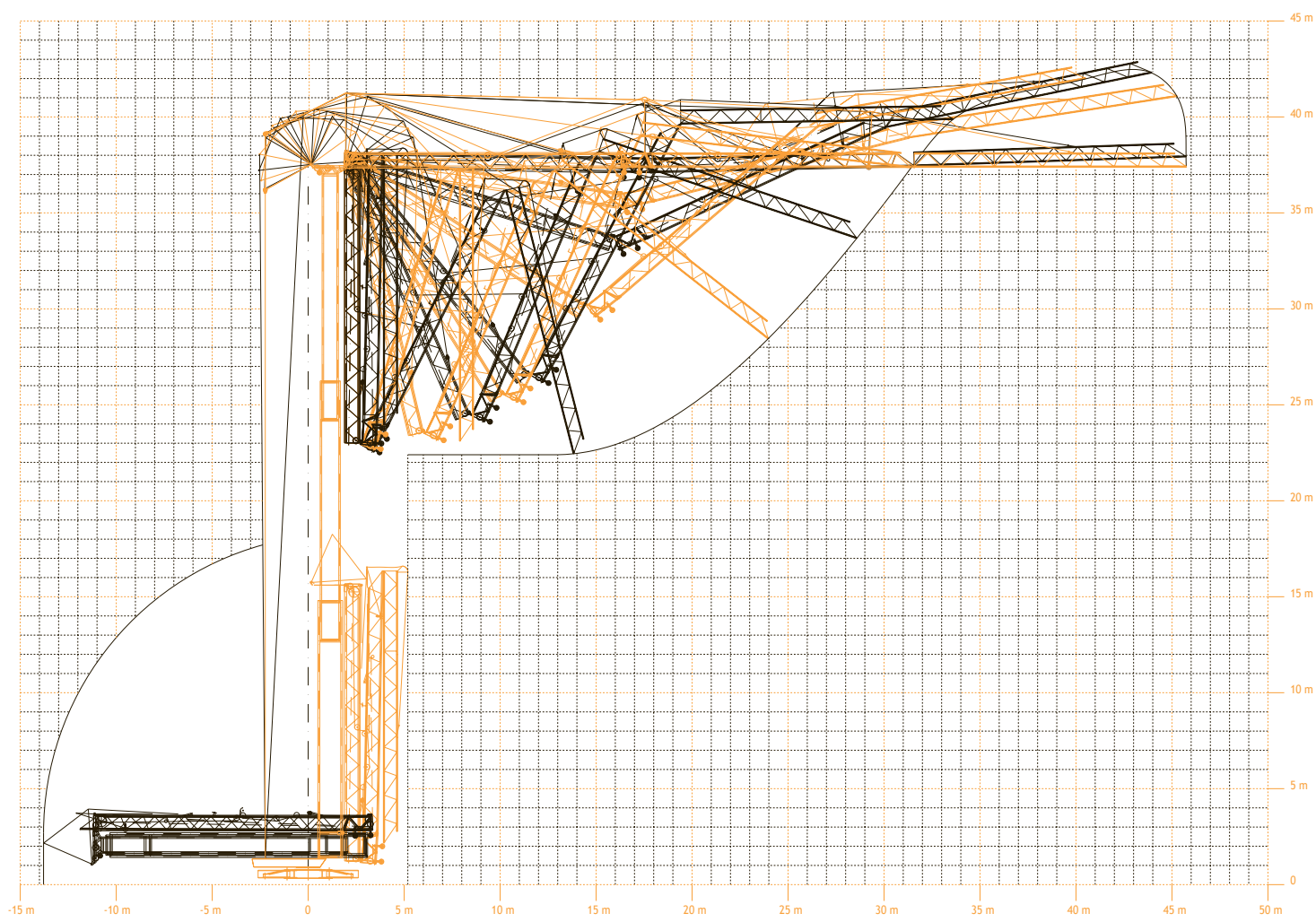
# A 45B



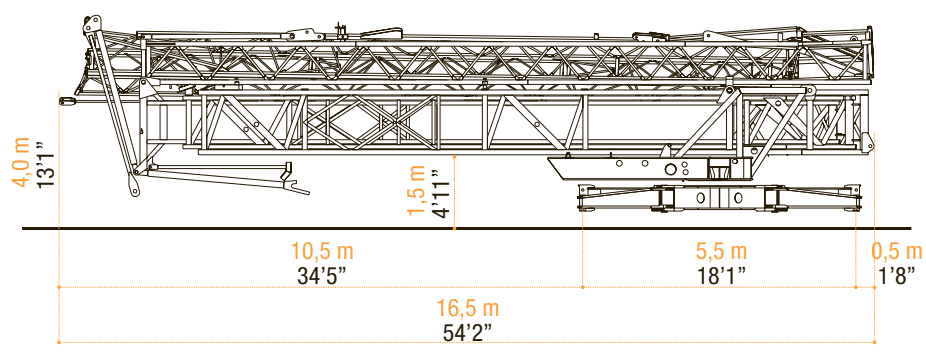
**ARCOMET**  
 www.arcomet.com




















VEREISTE MONTAGERUIMTE - ENCOMBREMENT AU MONTAGE - SPACE REQUIREMENT - ABMESSUNGEN - SPAZIO NECESSARIO PER IL MONTAGGIO



TRANSPORT



 <ul style="list-style-type: none"> <li>• in bedrijf</li> <li>• en service</li> <li>• in service</li> <li>• in Betrieb</li> <li>• in servizio</li> <li>• en servicio</li> </ul>	 <ul style="list-style-type: none"> <li>• buiten bedrijf</li> <li>• hors service</li> <li>• out of service</li> <li>• außer Betrieb</li> <li>• fuori servizio</li> <li>• fuera de servicio</li> </ul>	 <ul style="list-style-type: none"> <li>• hijsen</li> <li>• levage</li> <li>• hoisting</li> <li>• heben</li> <li>• sollevamento</li> <li>• elevación</li> </ul>	 <ul style="list-style-type: none"> <li>• loopkatrijden</li> <li>• chariotage</li> <li>• jib trolleying</li> <li>• Katzfahren</li> <li>• traslazione carrello</li> <li>• poleas móviles</li> </ul>	 <ul style="list-style-type: none"> <li>• zwenken</li> <li>• orientation</li> <li>• slewing</li> <li>• Schwenken</li> <li>• rotazione</li> <li>• orientación</li> </ul>	 <ul style="list-style-type: none"> <li>• spanning</li> <li>• tension</li> <li>• voltage</li> <li>• spannung</li> <li>• tensione</li> <li>• tensión</li> </ul>	 <ul style="list-style-type: none"> <li>• gewicht zonder ballast</li> <li>• poids propre sans lest</li> <li>• weight without ballast</li> <li>• gewicht ohne Ballast</li> <li>• peso senza zavorra</li> <li>• peso sin lastre</li> </ul>
 <ul style="list-style-type: none"> <li>• lengte</li> <li>• longueur</li> <li>• length</li> <li>• länge</li> <li>• lunghezza</li> <li>• longitud</li> </ul>	 <ul style="list-style-type: none"> <li>• spoor</li> <li>• translation</li> <li>• rail</li> <li>• Kranfahren</li> <li>• carreggiata</li> <li>• rail</li> </ul>	 <ul style="list-style-type: none"> <li>• vermogen</li> <li>• puissance</li> <li>• power</li> <li>• Leistung</li> <li>• potenza</li> <li>• potencia</li> </ul>	 <ul style="list-style-type: none"> <li>• micro snelheid</li> <li>• vitesse</li> <li>• speed</li> <li>• Geschwindigkeit</li> <li>• velocità</li> <li>• velocidad</li> </ul>	 <ul style="list-style-type: none"> <li>• 2<sup>e</sup> snelheid</li> <li>• 2<sup>e</sup> vitesse</li> <li>• 2<sup>e</sup> speed</li> <li>• 2<sup>e</sup> Geschwindigkeit</li> <li>• 2<sup>a</sup> velocità</li> <li>• 2<sup>a</sup> velocidad</li> </ul>	 <ul style="list-style-type: none"> <li>• 3<sup>e</sup> snelheid</li> <li>• 3<sup>e</sup> vitesse</li> <li>• 3<sup>e</sup> speed</li> <li>• 3<sup>e</sup> Geschwindigkeit</li> <li>• 3<sup>a</sup> velocità</li> <li>• 3<sup>a</sup> velocidad</li> </ul>	 <ul style="list-style-type: none"> <li>• maximale hoekdruk</li> <li>• réactions</li> <li>• reactions</li> <li>• Eckdrücke : 10 kN = 1t</li> <li>• press. angolare massima</li> <li>• presión angular máxima</li> </ul>
 <ul style="list-style-type: none"> <li>• enkel inschering zonder hijsblok</li> <li>• simple mouflage sans moufle</li> <li>• 2 fall reeving without houstingblock</li> <li>• 2 Fach Einsicherung ohne Hakenflasche</li> <li>• passaggio semplice senza paranca</li> <li>• solamente elevación sin polea</li> </ul>	 <ul style="list-style-type: none"> <li>• enkel inschering met hijsblok</li> <li>• simple mouflage avec moufle</li> <li>• 2 fall reeving with houstingblock</li> <li>• 2 Fach Einsicherung mit Hakenflasche</li> <li>• passaggio semplice con paranca</li> <li>• solamente elevación con polea</li> </ul>	 <ul style="list-style-type: none"> <li>• dubbel inschering</li> <li>• double mouflage</li> <li>• 4 fall reeving</li> <li>• 4 Fach Einsicherung</li> <li>• passaggio doppio</li> <li>• elevación doble</li> </ul>				

Konform richtlijn 2000/14/EG betreffende geluidsemissie van materieel voor gebruik buitenshuis en wijzigingen. - également conforme aux dispositions de la directive "émission sonores des équipements utilisés à l'extérieur des bâtiments" 2000/14/CE et aux législations la transposant. - Requirements of directive 2000/14/CE "noise emission in the environment by equipment for use outdoors, as amended. - Bestimmung der Richtlinie "Lärmübertragung des ausserhalb der Gebäude benutzten Ausrüstungen" 2000/14/EG und den gesetzlichen Vorschriften.



**ARCOMET**

Industrieweg 139 - 3583 Paal-Beringen - BELGIUM - T +32 (0)11 450 950 - EMAIL [arcomet@arcomet.com](mailto:arcomet@arcomet.com) - [www.arcomet.com](http://www.arcomet.com)