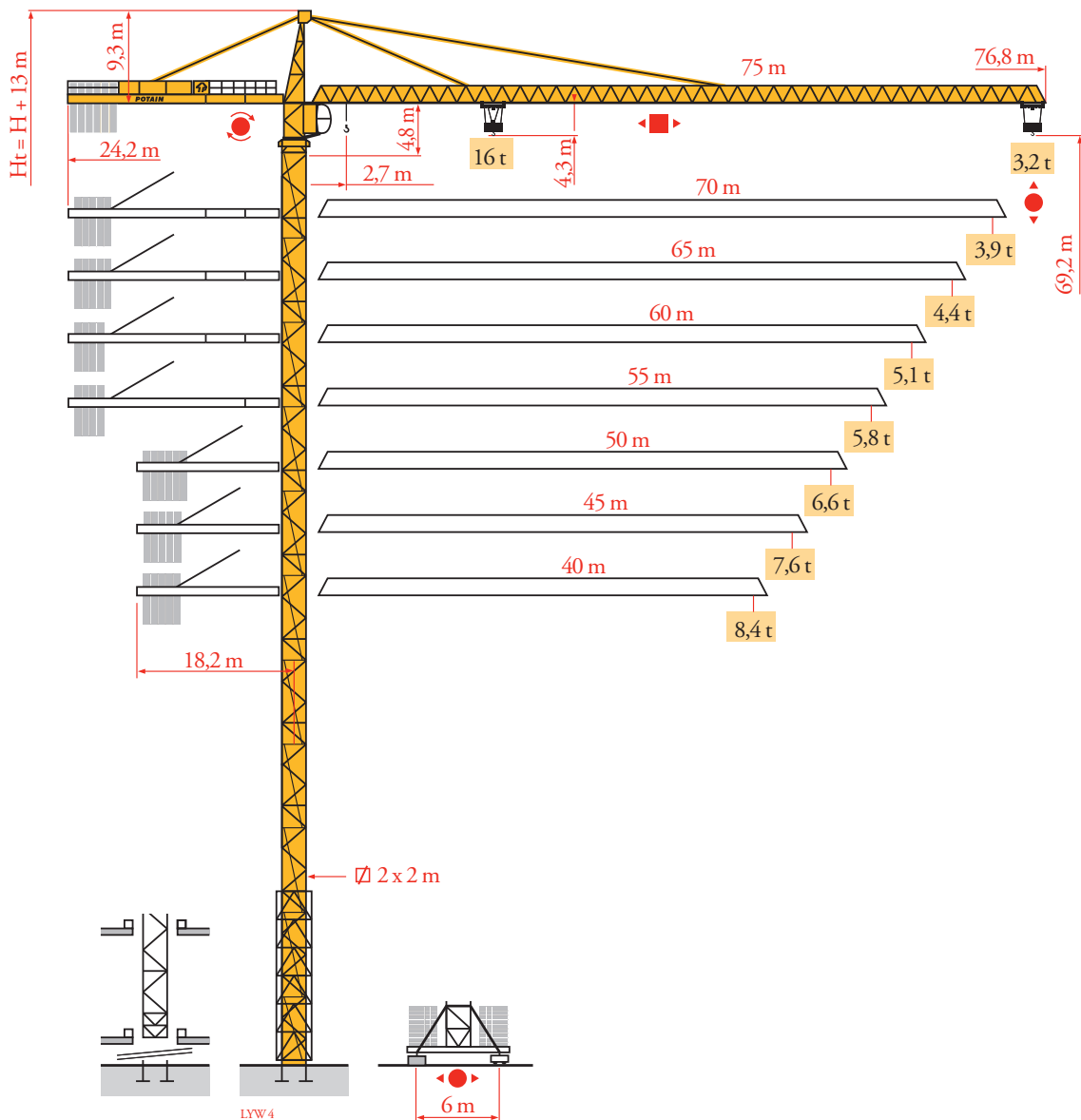


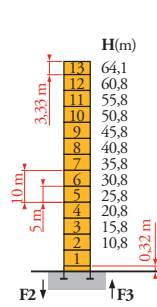
# Potain MD 365B L16



Mat / Réactions  
 Maste / Eckdrücke  
 Masts / Reactions  
 Mástil / Reacciones  
 Torre / Reazioni  
 Tramo / Reações  
 Композиции башни /  
 Реакции

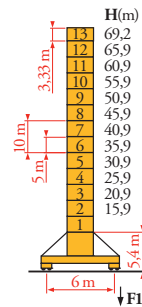
LYW 4

2 m  
 40 m → 75 m



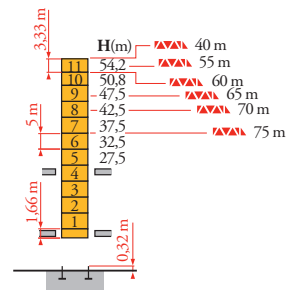
P 62 A

F2	● 201 t
	■ 200 t
F3	● 140 t
	■ 140 t
	▲ 99 t



V 60 A

F1	● 126 t
	■ 128 t
	▲ 111 t

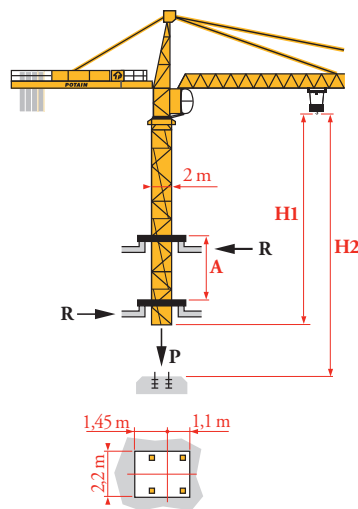


B 60 A

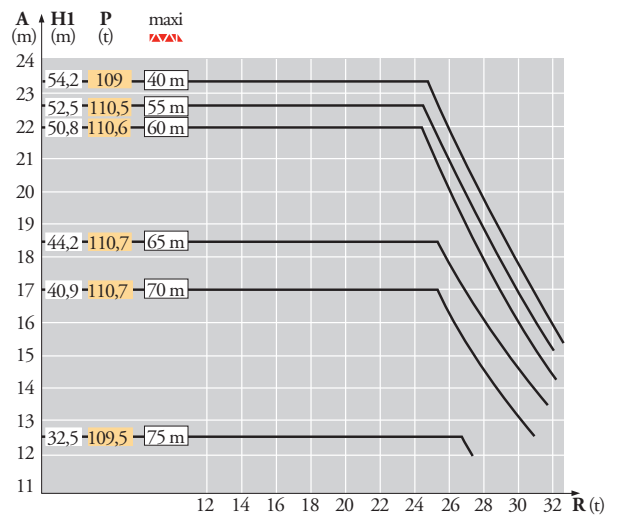


Télescopage sur dalles  
 Kletterkrane im Gebäude  
 Climbing crane  
 Telescopage gruas trepadoras  
 Gru in cavedio  
 Telescopagem sobre lages  
 Кран, ползущий внутри здания

LYW 3



B 60 A



FR

- Réactions en service
- Réactions hors service



A vide sans lest (ni train de transport) avec flèche et hauteur maximum

DE

- Reaktionskräfte in Betrieb
- Reaktionskräfte außer Betrieb

Ohne Last, Ballast (und Transportachse), mit Maximalausleger und Maximalhöhe

EN

- Reactions in service
- Reactions out of service

Without load, ballast (or transport axes), with maximum jib and maximum height

ES

- Reacciones en servicio
- Reacciones fuera de servicio

Sin carga, sin lastre, (ni tren de transporte), flecha y altura máxima

IT

- Reazioni in servizio
- Reazioni fuori servizio

A vuoto, senza zavorra (ne assali di trasporto) con braccio massimo e altezza massima

PT

- Reações em serviço
- Reações fora de serviço

Sem carga (nem trem de transporte)- sem lastro com lança e altura máximas

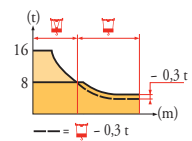
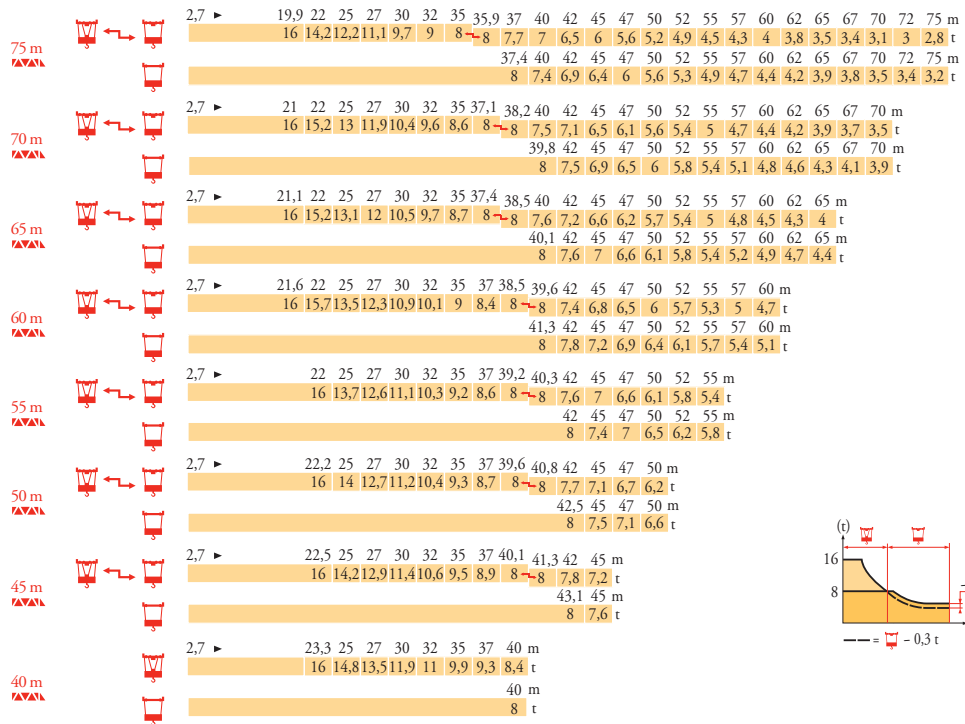
RU

- Реакции при работе
- Реакции в покое

Вес без груза, балласта (или транспортных осей), с максимальной длиной стрелы и максимальной высотой

Courbes de charges  
Lastkurven  
Load diagrams  
Curvas de cargas  
Curve di carico  
Curva de cargas  
Диаграммы грузоподъемностей

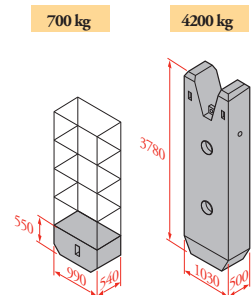
LW5



Lest de contre-fleche  
Gegenauslegerballast  
Counter-jib ballast  
Lastre de contra flecha  
Contrappeso  
Lastros da contra lanca  
Балласт на консоли

LW4

LW4	H (m)	75 LVF			100 LVF			150 LCC		
		4200 kg	700 kg	(kg)	4200 kg	700 kg	(kg)	4200 kg	700 kg	(kg)
75 m	24,2 m	5	4	23 800	5	3	23 100	5	2	22 400
70 m	24,2 m	5	-	21 000	4	5	20 300	4	3	18 900
65 m	24,2 m	4	3	18 900	4	3	18 900	4	1	17 500
60 m	24,2 m	4	-	16 800	3	5	16 100	3	3	14 700
55 m	24,2 m	3	3	14 700	3	3	14 700	3	2	14 000
50 m (B60A)	24,2 m	3	2	14 000	3	1	13 700	3	-	12 600
50 m	18,2 m	5	5	24 500	5	4	23 800	5	3	23 100
45 m	18,2 m	5	-	21 000	4	5	20 300	4	4	19 600
40 m	18,2 m	4	2	18 200	4	1	17 500	4	-	16 800



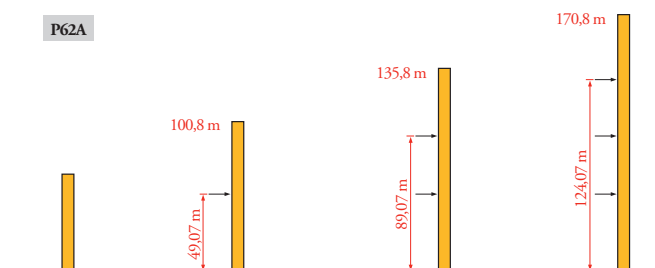
Lest de base - Grundballast  
Base ballast - Lastre de base  
Zavorra di base - Lastros da base  
Базовый балласт

LW3

LW3	H (m)	V 60 A													
		(t)	69,2	65,9	60,9	55,9	50,9	45,9	40,9	35,9	30,9	25,9	20,9	15,9	
		(t)	108	108	108	108	108	108	108	96	96	96	84	84	84

Ancrages  
Verankerungen  
Anchorage  
Anclaje  
Ancoraggio  
Ancoragem  
Рамки для крепления к зданию








LW4

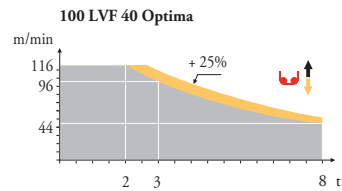
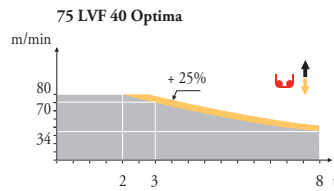


FR	DE	EN	ES	IT	PT	RU
<b>A</b> Distance entre cadres	Abstand zwischen den Rahmen	Distance between collars	Distancia entra marcos	Distanza fra i telai	Distância entre quadros	Расстояние между рамками крепления
<b>H</b> Hauteur grue	Kranhöhe	Crane height	Altura grúa	Altezza gru	Altura da grua	Высота крана
<b>P</b> Poids de la grue (en service)	Krangewicht (in Betrieb)	Crane weight (in service)	Peso de la grúa (en servicio)	Peso della gru (in servizio)	Peso da grua (em serviço)	Вес крана (при работе)
<b>R</b> Réaction horizontale	Horizontalkräfte	Horizontal reaction	Reaccion horizontal	Reazione orizzontale	Reacção horizontal	Горизонтальные реакции
Voir télescopage sur dalles	Siehe Kletterkrane im Gebäude	See climbing crane	Veja grua trepadora	Consultare gru in cavedio	Ver telescopagem sobre lages	См. кран, ползущий внутри здания

Mécanismes  
Antriebe  
Mechanisms  
Mecanismos  
Meccanismi  
Mecanismos  
Механизмы

LW 8

		U↑					UU↑					ch - PS hp	kW										
	75 LVF40 Optima	m/min	0	→	34	→	44	→	70	→	80	0	→	17	→	22	→	35	→	40	75	55	553 m
		t			8		6		3		2			16		12		6		4			
	100 LVF40 Optima	m/min	0	→	44	→	56	→	96	→	116	0	→	22	→	28	→	48	→	58	100	75	1009 m
		t			8		6		3		2			16		12		6		4			
	150 LCC 40	m/min	68	→	82	→	102	→	136	→	162	34	→	41	→	51	→	68	→	81	150	110	596 m
		t	8		6		4		2		1	16		12		8		4		2			
	6 DVF 6	m/min	0 → 42(16 t)    0 → 84 (8 t)					0 → 100 (4 t)					5,5	4									
	RVF 182 Optima +	tr/min U/min rpm	0 → 0,7										2 x 12	2 x 9									
	V 60 A RT 544 A1 2V R ≥ 13 m	m/min	13,5 - 27										4 x 7	4 x 5,2									
 IEC 60204-32												 kVA											
400 V(+10% -10%) 50 Hz / 480 V(+ 6% -10%) 60 Hz												75 LVF : 100 kVA 100 LVF : 125 kVA 150 LCC : 175 kVA											



**FR**

Levage  
Distribution  
Orientation  
Translation

**DE**

Heben  
Katzfahren  
Schwenken  
Kranfahren

**EN**

Hoisting  
Trolleying  
Slewing  
Travelling

**ES**

Elevación  
Distribución  
Orientación  
Traslación

**IT**

Sollevamento  
Distribuzione  
Rotazione  
Traslazione

**PT**

Elevação  
Distribuição  
Rotação  
Translação

**RU**

Подъем  
Перемещение каретки  
Поворот  
Перемещение крана



Document commercial non contractuel. Pour toute information technique se référer à la notice correspondante.

Unverbindliches Vertriebsdokument. Für technische Informationen, siehe die entsprechenden Anweisungen.

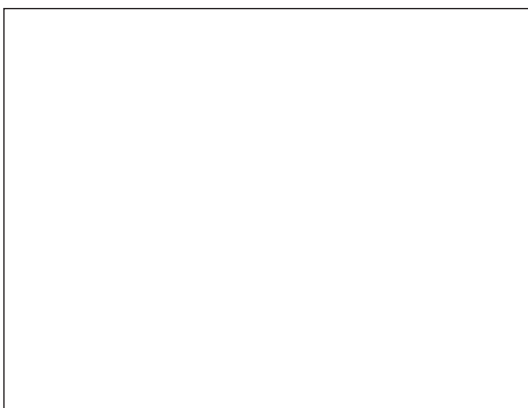
This commercial document is not legally binding. For any technical information, please refer to the corresponding instructions.

Documento comercial no contractual. Para cualquier información técnica, ver la noticia correspondiente.

Documento commerciale non vincolante, per tutte le informazioni tecniche fare riferimento al catalogo istruzioni.

Documento comercial não contratual. Para qualquer informação técnica complementar consultar as respectivas instruções.

Этот коммерческий документ не является юридически обязательным. Для получения технической информации, см. соответствующие инструкции.



MD 365B L16

**Manitowoc**

**Manitowoc - Americas - World Headquarters**  
2400 S. 44th Street • Manitowoc • WI 54220 USA  
Tel: +1 920 684 4410 • Fax: +1 920 652 9778

**Manitowoc - Europe, Middle East & Africa**  
Ecully, France  
18, rue de Charbonnières B.P. 173 • 69132 ECULLY Cedex • FRANCE  
Tel: +33 (0)4 72 18 20 20 • Fax: +33 (0)4 72 18 20 00

**Manitowoc - Asia Pacific**  
16F Xu Hui Yuan Building,  
1089 Zhongshan No.2 Road (S) • Shanghai 200030 China  
Tel: +86 21 6457 0066 • Fax: +86 21 6457 4955

REF. 2003 48 LW 9