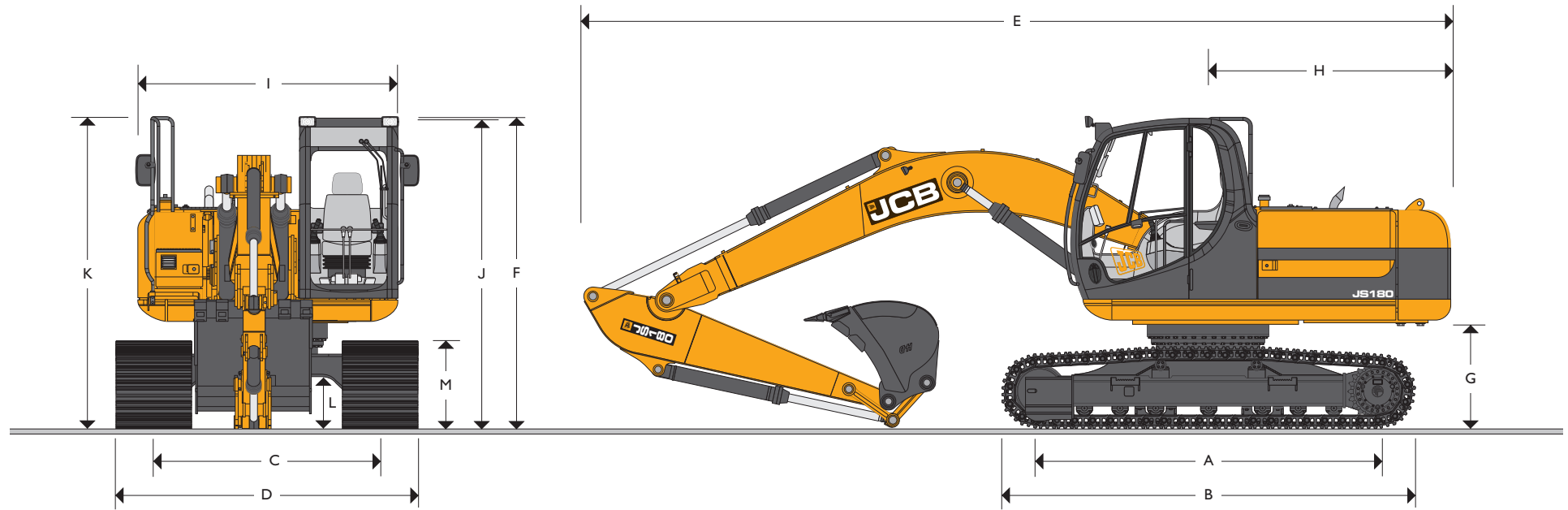




MAX. OPERATING WEIGHT: 19480 kg (42946 lb) ENGINE POWER: 92 kW (123 hp)

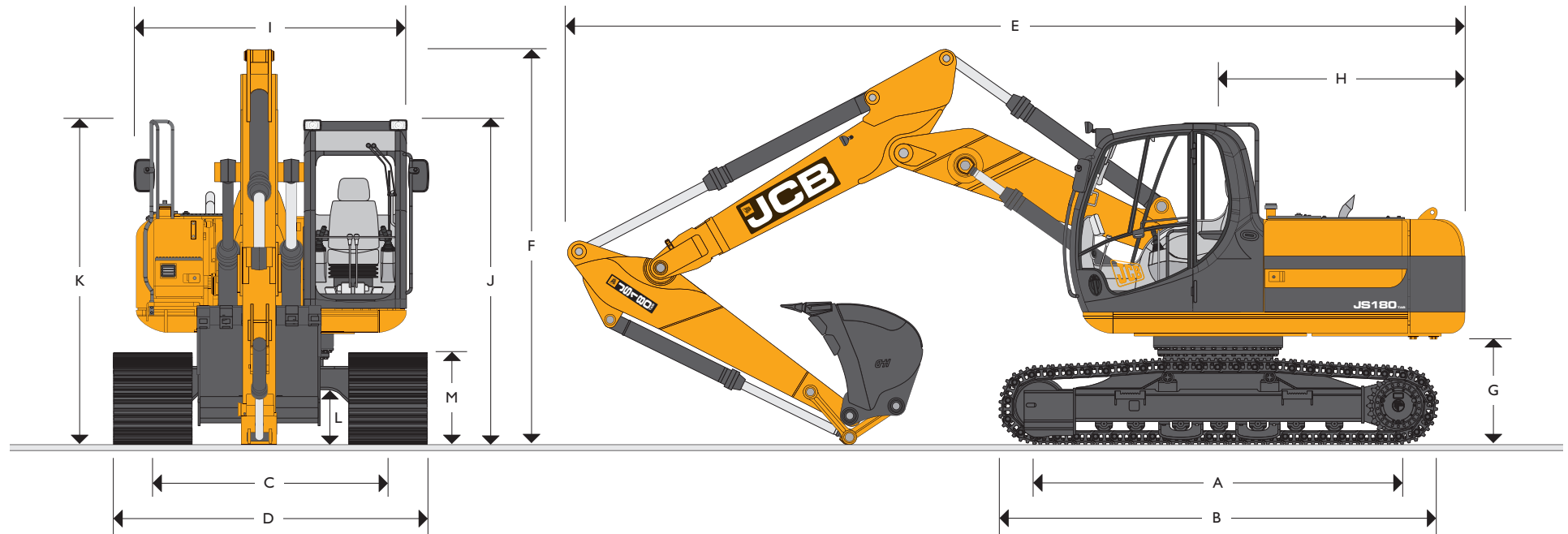


STATIC DIMENSIONS – JS180NLC/LC MONOBOOM

| Dimensions in millimetres (ft-in) | | NLC | LC | Dimensions in millimetres (ft-in) | |
|-----------------------------------|--------------------------------------|------------------------|------------------------|-----------------------------------|-------------------------|
| A | Track length on ground | 3370 (11-1) | 3370 (11-1) | G | Counterweight clearance |
| B | Undercarriage overall length | 4170 (13-8) | 4170 (13-8) | H | Tail swing radius |
| C | Track gauge | 1990 (6-6) | 2200 (7-2) | I | Width of superstructure |
| D | Width over tracks (500mm trackshoes) | 2490 (8-2) | – | J | Height over cab |
| D | Width over tracks (600mm trackshoes) | 2590 (8-6) | 2800 (9-2) | K | Height over grab rail |
| D | Width over tracks (700mm trackshoes) | 2690 (8-10) | 2900 (9-6) | L | Ground clearance |
| D | Width over tracks (800mm trackshoes) | – | 3000 (9-10) | M | Track height |
| Dipper lengths | | 2.25m (7ft 5in) | 2.7m (8ft 10in) | 3.05m* (10ft 0in) | |
| E | Transport length with Monoboom | 8366 (27-5) | 8326 (27-4) | *Machine in transport position | |
| F | Transport height with Monoboom | 3014 (9-10) | 3014 (9-10) | | |



MAX. OPERATING WEIGHT: 19965 kg (44015 lb) NETT ENGINE POWER: 92 kW (123 hp)



STATIC DIMENSIONS – JS180NLC/LC T.A.B.

| Dimensions in millimetres (ft-in) | | NLC | LC | Dimensions in millimetres (ft-in) | |
|-----------------------------------|--------------------------------------|------------------------|------------------------|-----------------------------------|-------------------------|
| A | Track length on ground | 3370 (11-1) | 3370 (11-1) | G | Counterweight clearance |
| B | Undercarriage overall length | 4170 (13-8) | 4170 (13-8) | H | Tail swing radius |
| C | Track gauge | 1990 (6-6) | 2200 (7-2) | I | Width of superstructure |
| D | Width over tracks (500mm trackshoes) | 2490 (8-2) | – | J | Height over cab |
| D | Width over tracks (600mm trackshoes) | 2590 (8-6) | 2800 (9-2) | K | Height over grab rail |
| D | Width over tracks (700mm trackshoes) | 2690 (8-10) | 2900 (9-6) | L | Ground clearance |
| D | Width over tracks (800mm trackshoes) | – | 3000 (9-10) | M | Track height |
| Dipper lengths | | 2.25m (7ft 5in) | 2.7m (8ft 10in) | *Machine in transport position | |
| E | Transport length with Monoboom | 8652 (28-5) | 8674 (28-5) | | |
| F | Transport height with Monoboom | 2876 (9-5) | 2760 (9-1) | | |
| | | | 3.05m* (10ft 0in) | | |



ENGINE

| | |
|---------------------------|--|
| Model | Isuzu 4JJ1X European Tier 3 emissions compliant. |
| Type | Water cooled, 4-stroke, 4-cylinder in-line, direct injection, turbocharged diesel. |
| Nett power (ISO 3046-1NF) | 92kW (128hp) at 2200rpm. |
| Piston Displacement | 2.999 litres. |
| Injection | Electronic governor. |
| Air Filtration | Dry element with secondary safety element and in cab warning indicator. |
| Cooling | Large capacity radiator. |
| Starting system | 24 volt – 4.5kW. |
| Batteries | 2 x 12 volt Heavy Duty. |
| Alternator | 24 volt 50 amp. |
| Refuelling pump | Electric type. |

SWING SYSTEM

| | |
|-------------|--|
| Swing motor | Axial piston type. |
| Swing brake | Hydraulic braking plus automatic spring applied disc type parking brake. |
| Final drive | Planetary reduction. |
| Swing speed | 10 rpm. |
| Swing gear | Large diameter, internally toothed fully sealed grease bath lubricated. |
| Swing lock | Multi position switchable brake. |

UNDERCARRIAGE

| | |
|-----------------------|--|
| Carriage options | NLC-Narrow and LC-Long Carriage. |
| Construction | Fully welded, "X" frame type with central bellyguarding and track motor guards. Sloping sidemembers with dirt relief holes under top rollers. |
| Recovery point | Front and rear. |
| Track type | Sealed and greased. |
| Track shoe options | NLC – 500mm (20in), 600mm (24in), 700mm (28in). LC – 600mm (24in), 700mm (28in), 800mm (31.5in). |
| Upper & lower rollers | Heat treated, sealed and lubricated. |
| Track adjustment | Grease cylinder type. |
| Track idler | Sealed and lubricated, with spring cushioned recoil. |
| NLC & LC | |
| No. of track guides | 2 per side |
| No. of lower rollers | 7 per side |
| No. of upper rollers | 2 per side |
| No. of track shoes | 46 per side |

HYDRAULIC SYSTEM

A variable flow load sensing system with flow on demand, variable power output and servo operated, multi-function open centre control. Machine auto warm up standard – maximises performance in cold conditions.

Pumps

| | |
|--------------|--|
| Main pumps | 2 variable displacement axial piston type. |
| Maximum flow | 2 x 138 L/min (2 x 30.4 UK GPM). |
| Servo pump | Gear type. |
| Maximum flow | 22 L/min (4.84 UK GPM). |

Control valve

A combined ten spool control valve with auxiliary service spool as standard. When required twin pump flow is combined to boom, dipper and bucket services for greater speed and efficiency.

Relief valve settings

| | |
|------------------|-------------------------|
| Boom/Arm/Bucket | 314 bar (4610lbf/sq.in) |
| With power boost | 343 bar (4975lbf/sq.in) |
| Swing circuit | 279 bar (4045lbf/sq.in) |
| Travel circuit | 343 bar (4975lbf/sq.in) |
| Pilot control | 40 bar (569lbf/sq.in) |

A separate Cushion Control valve in the servo system provides cushioning of the boom and dipper spools selection and quick warm-up of the servo system.

Hydraulic cylinders

Double acting type, with bolt-up end caps and hardened steel bearing bushes. End cushioning is fitted as standard on boom, dipper and bucket rams.

Optional hose burst check valves available for boom and dipper rams.

Filtration

The hydraulic components are protected by the highest standard of filtration to ensure long hydraulic fluid and component life.

| | |
|-------------------------|--|
| In tank | 150 micron, suction strainer. |
| Main return line | 10 micron, fibreform element. |
| Plexus Bypass line | 1.5 micron, paper element. |
| Pilot line | 10 micron, paper element. |
| Hydraulic hammer return | 10 micron, reinforced microform element. |

Cooling

Worldwide cooling is provided as part of a single face cooling pack, in conjunction with the engine water cooler.

TRACK DRIVE

| | |
|-----------------|---|
| Type | Fully hydrostatic, three speed with autoshift between high and medium speed. |
| Travel motors | Variable swash axial piston type, fully guarded within undercarriage frame. |
| Final drive | Planetary reduction, bolt-on sprockets. |
| Service brake | Hydraulic counter balance valve to prevent overspeeding on gradients. |
| Park brake | Disc type, spring applied, automatic hydraulic release. |
| Gradeability | 70% (35 deg) continuous. |
| Travel speed | High – 4.9 km/h (3.0 mph). Mid – 3.1 km/h (1.9 mph). Low – 2.3 km/h (1.43 mph). |
| Tractive effort | 144kN (14684kgf, 32372lbf). |



EXCAVATOR END – MONOBOOM

Monoboom available along with a choice of dipper lengths to suit the requirements of reach, dig-depth, loadover height, tearouts and site versatility. Reserve strength is built into the fully welded structures for hydraulic hammer and other arduous operations. Fabricated bucket tipping links are provided with a choice of lift points. Strong, durable construction, large cross sections and multi plate fabrications to withstand high stress applications. The 5.15m (16ft 11in) boom is designed to ensure the optimum digging envelope when matched with the three dipper lengths. Low maintenance bronze alloy bushes with graphite plugs are fitted to boom base and boom to dipper pivots resulting in 1000 hour greasing intervals at these points.

EXCAVATOR END – T.A.B.

Triple Articulated Boom (T.A.B.) with a choice of dipper lengths to suit the requirements of reach, dig-depth, loadover height, tearouts and site versatility. Reserve strength is built into the fully welded structures for hydraulic hammer and other arduous operations. Fabricated bucket tipping links are provided with a choice of lift points.

CAB

Excellent digging, loading and positioning visibility results from the careful design of front, side and roof lights. All screens are tinted to improve in cab conditions. Fully opening front screen is very smooth to operate and as the lower screen is stored within the top screen frame it makes complete front screen opening easy, fast and convenient. Fresh air ventilation available from opening door window, opening slot in front screen and fully opening front screen. Parallelogram wash wiper for upper screen ensuring good wiped area for maximum visibility. Wiper motor is fitted in the left hand side of the roof screen so as not to affect bucket visibility when loading. Optional lower screen wiper available. Fresh air ventilation and heater with windscreen demister. Infinitely variable blower speed, temperature and recirculation control. Optional climate control. Fully adjustable deluxe suspension seat with arm rest adjustment and backrest recline. Optional radio with digital tuner fitted into the roof lining for maximum protection. Conveniently placed radio mute button incorporated into lower console. 12v power point and mobile phone holder built into the right hand console. Courtesy light can be operated from ground level and is illuminated for five minutes or until switched off improving operator access at night. Cab mounted roller blind protects operator from suns' glare through front or top screens.

AMS – ADVANCED MANAGEMENT SYSTEM

Four selectable working modes link the operators control movements with the engine and hydraulic systems to maximise productivity and efficiency.

A (Auto) Up to 100% engine power and 100% flow. Gives variable power and speed depending on the operator's input, matching the demand for output and efficiency to the job. Power boost is automatically activated in this mode should hard conditions be encountered. Auto idle cuts in after a period of inactivity (between 5 and 30 seconds as set by the operator)

E (Economy) 80% engine power: 95% of hydraulic flow maximises economy while maintaining excellent output.

P (Precision) 55% engine power: 90% of hydraulic flow for fine control of grading operations.

L (Lifting) 55% engine power: 63% of hydraulic flow with permanent power boost for maximum lifting power and control.

The Auto mode allows the AMS processor to select the optimum operational performance to match the demands of the job while the three alternative modes give precise matching of application when specific tasks are undertaken.

The adjustable position monitor mounted on the front right hand pillar of the cab gives the operator a constant read out of mode, tracking range, operating temperature and a host of other information, while retaining excellent visibility of the monitor and the job being carried out.

The required flow for hammer applications can be set and stored in the AMS memory and is automatically activated whenever the hammer pedal is depressed.

A maintenance indicator warns of imminent service needs, and all servicing and basic checks can be carried out using only the in cab display.

CONTROLS

Excavator All servo lever operated to ISO control pattern, independently adjustable to the seat.

Tracks Individually servo operated by foot pedal or hand lever. Speed selection via joystick button.

Auxiliary Via servo operated foot pedal.

Control isolation Via gate lock lever at cab entrance or panel switch.

Engine speed Dial type throttle control plus servo lever mounted one-touch idle control or separate selectable auto-idle with adjustable time delay using AMS.

Engine stop Ignition key operated and separate shut-down button.

Horn Operated via servo lever mounted button.



SERVICE CAPACITIES

| | Litres | UK Gal |
|----------------------------------|--------|--------|
| Fuel tank | 253 | 55.6 |
| Engine coolant | 16.4 | 3.8 |
| Engine oil | 13.2 | 2.9 |
| Swing reduction gear | 6 | 1.3 |
| Track reduction gear (each side) | 4.4 | 0.97 |
| Hydraulic system | 142.0 | 31.2 |
| Hydraulic tank | 73.0 | 16.1 |

WEIGHTS AND GROUND BEARING PRESSURES

JS180NLC Mono – Machine equipped with 5.15m Monoboom, 3.05m Dipper, 0.9m³ Bucket, operator and full fuel tank.

| Shoe Width | Operating Weight | Bearing Pressure |
|---------------|-------------------|---------------------------------|
| 500mm (20in.) | 18895kg (41656lb) | 0.54kg/sq. cm. (7.16lb/sq. in.) |
| 600mm (24in.) | 19021kg (41934lb) | 0.42kg/sq. cm. (5.97lb/sq. in.) |

JS180LC Mono – Machine equipped with 5.15m Monoboom, 3.05m Dipper, 0.9m³ Bucket, operator and full fuel tank.

| Shoe Width | Operating Weight | Bearing Pressure |
|---------------|-------------------|---------------------------------|
| 600mm (24in.) | 19105kg (42119lb) | 0.42kg/sq. cm. (5.97lb/sq. in.) |
| 700mm (28in.) | 19460kg (42901lb) | 0.33kg/sq. cm. (4.69lb/sq. in.) |

JS180NLC T.A.B. – Machine equipped with 5.35m T.A.B. boom, 3.05m Dipper, 0.9m³ Bucket, operator and full fuel tank.

| Shoe Width | Operating Weight | Bearing Pressure |
|---------------|-------------------|---------------------------------|
| 500mm (20in.) | 19380kg (42726lb) | 0.55kg/sq. cm. (7.82lb/sq. in.) |
| 600mm (24in.) | 19506kg (43003lb) | 0.43kg/sq. cm. (6.12lb/sq. in.) |

JS180LC T.A.B. – Machine equipped with 5.35m T.A.B. boom, 3.05m Dipper, 0.9m³ Bucket, operator and full fuel tank.

| Shoe Width | Operating Weight | Bearing Pressure |
|---------------|-------------------|---------------------------------|
| 600mm (24in.) | 19590kg (43189lb) | 0.43kg/sq. cm. (6.12lb/sq. in.) |
| 700mm (28in.) | 19945kg (43971lb) | 0.34kg/sq. cm. (4.84lb/sq. in.) |

STANDARD EXCAVATING BUCKETS

All buckets are JCB – Escó type fully welded steel, with sealed, hardened steel pivot pins and replaceable wear parts.

| Max Width | Capacity (SAE heaped) | Weight |
|----------------|-----------------------|----------------|
| 600mm (24in.) | 0.35cu.m (0.46cu.yd) | 426kg (937lb) |
| 750mm (30in.) | 0.49cu.m (0.64cu.yd) | 480kg (1056lb) |
| 900mm (36in.) | 0.62cu.m (0.81cu.yd) | 525kg (1155lb) |
| 1000mm (40in.) | 0.72cu.m (0.94cu.yd) | 564kg (1240lb) |
| 1200mm (48in.) | 0.90cu.m (1.18cu.yd) | 633kg (1392lb) |

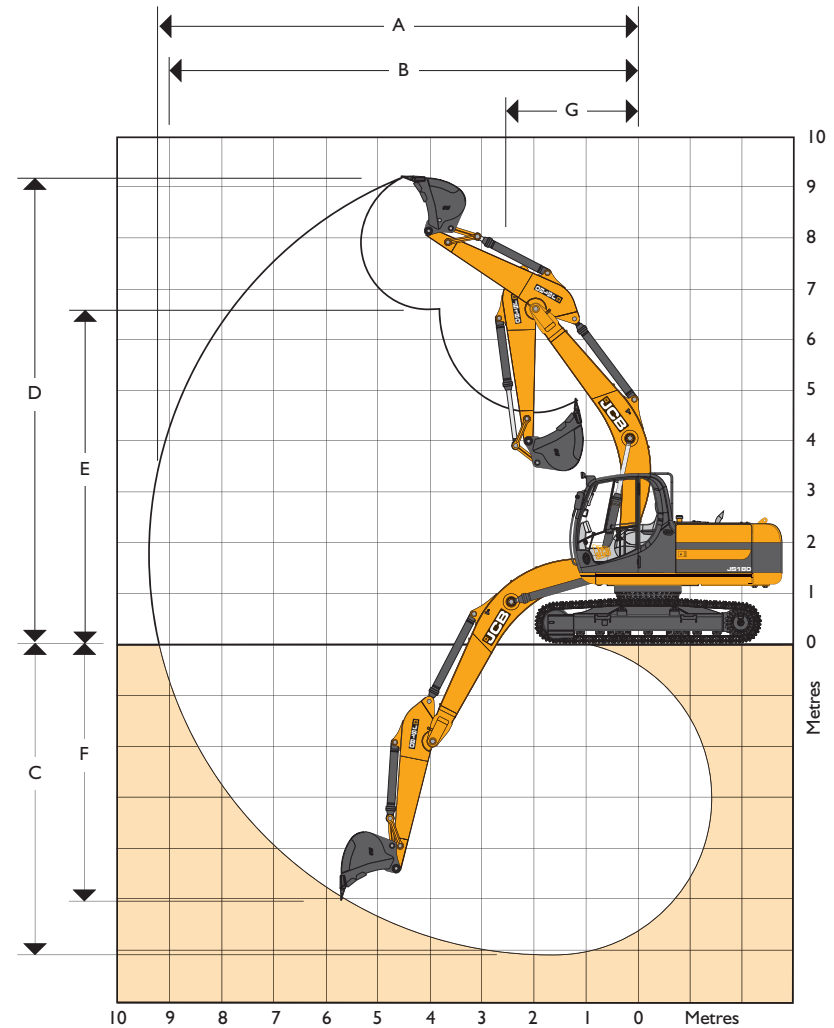
STANDARD / OPTIONAL EQUIPMENT

Standard Equipment: Engine fan guard; Cold start pre-heat; Auto engine warm up; Double element air cleaner; Heavy duty alternator; Electrics isolator; Heavy-duty batteries; Cab & engine soundproofing; Cab heater & screen demister; Tinted glass; Interior light; Coat hook; Cigarette lighter; Ashtray; Operator's storage shelf; Removable floor mat; Windscreen wash/wipe; Plug-in power socket; Automatic power boost; Auto-idle; One-touch engine speed control; Hydraulic cushion control; Plexus hydraulic oil filtration; HSP pressure test points; Auxiliary pipework mounting brackets; Work lights – boom & mainframe mounted; Undercarriage belly guarding; Upper structure under covers; Swing system cover; External mirrors; Handrail & non slip walk ways; Quick connect engine oil drain pipe; Front screen blind; Quick connect fuel tank drain pipe; Hinged engine under cover; Remote filter system.

Optional Equipment: Hose burst check valves & overload warning system; Tipping link mounted lift points; General purpose buckets; Ditch/grading buckets; Quickhitch buckets; Hydraulic hammers; Auxiliary pipework (full and low flow); Climate control; Cab mounted & rear work lights; Rotating beacon; Rain guard; Biodegradable oil; Air suspension seat with heated pad and lumbar support adjustment; Electric refuelling pump; Track guides; Lower screen wiper; Radio; High and low temperature hydraulic oil option.

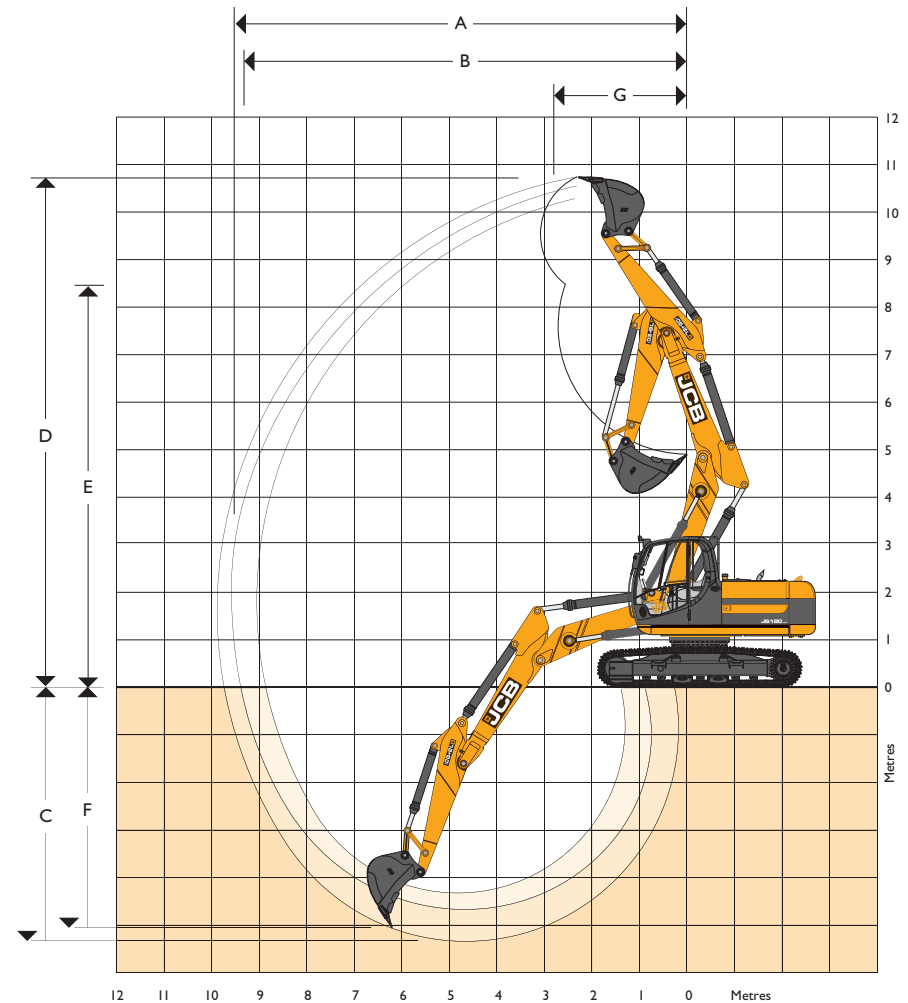
WORKING RANGE – JS180 NLC/LC MONOBOOM

| Boom length: 5.15m (16ft 10in) | | |
|---------------------------------|-----------------------------------|-------------------------|
| Dipper length: | | 2.25m (7ft 5in) |
| A | Maximum digging reach | mm (ft-in) 8514 (27-11) |
| B | Maximum digging reach (on ground) | mm (ft-in) 8368 (27-5) |
| C | Maximum digging depth | mm (ft-in) 5799 (19-0) |
| D | Maximum digging height | mm (ft-in) 9398 (30-9) |
| E | Maximum dumping height | mm (ft-in) 7048 (23-1) |
| F | Maximum vertical wall cut depth | mm (ft-in) 5229 (17-2) |
| G | Minimum swing radius | mm (ft-in) 3000 (9-10) |
| | Bucket rotation | 182° |
| | Maximum dipper tearout (ISO 6015) | kgf (lbf) 8754 (19259) |
| | Maximum bucket tearout (ISO 6015) | kgf (lbf) 11839 (26104) |
| Dipper length: 2.70m (8ft 10in) | | |
| A | Maximum digging reach | mm (ft-in) 8908 (29-3) |
| B | Maximum digging reach (on ground) | mm (ft-in) 8769 (28-9) |
| C | Maximum digging depth | mm (ft-in) 6252 (20-6) |
| D | Maximum digging height | mm (ft-in) 9663 (31-8) |
| E | Maximum dumping height | mm (ft-in) 7321 (24-0) |
| F | Maximum vertical wall cut depth | mm (ft-in) 5682 (18-8) |
| G | Minimum swing radius | mm (ft-in) 3000 (9-10) |
| | Bucket rotation | 182° |
| | Maximum dipper tearout (ISO 6015) | kgf (lbf) 7619 (16764) |
| | Maximum bucket tearout (ISO 6015) | kgf (lbf) 11839 (26104) |
| Dipper length: 3.05m (10ft 0in) | | |
| A | Maximum digging reach | mm (ft-in) 9223 (30-7) |
| B | Maximum digging reach (on ground) | mm (ft-in) 9088 (29-10) |
| C | Maximum digging depth | mm (ft-in) 6598 (21-8) |
| D | Maximum digging height | mm (ft-in) 9888 (32-5) |
| E | Maximum dumping height | mm (ft-in) 7543 (24-8) |
| F | Maximum vertical wall cut depth | mm (ft-in) 6028 (19-9) |
| G | Minimum swing radius | mm (ft-in) 3000 (9-10) |
| | Bucket rotation | 182° |
| | Maximum dipper tearout (ISO 5016) | kgf (lbf) 7003 (15439) |
| | Maximum bucket tearout (ISO 5016) | kgf (lbf) 11839 (26104) |



WORKING RANGE – JS180 NLC/LC T.A.B.

| T.A.Boom length: 5.35m (17ft 6in) | | |
|--|-----------------------------------|-------------------------|
| Dipper length: | | 2.25m (7ft 5in) |
| A | Maximum digging reach | mm (ft-in) 8831 (29-0) |
| B | Maximum digging reach (on ground) | mm (ft-in) 8652 (28-5) |
| C | Maximum digging depth | mm (ft-in) 5354 (17-7) |
| D | Maximum digging height | mm (ft-in) 10248 (33-7) |
| E | Maximum dumping height | mm (ft-in) 8000 (26-3) |
| F | Maximum vertical wall cut depth | mm (ft-in) 4232 (13-10) |
| G | Minimum swing radius | mm (ft-in) 2170 (7-1) |
| | Bucket rotation | 182° |
| | Maximum dipper tearout (ISO 6015) | kgf (lbf) 8754 (19259) |
| | Maximum bucket tearout (ISO 6015) | kgf (lbf) 11839 (26104) |
| Dipper length: 2.70m (8ft 10in) | | |
| A | Maximum digging reach | mm (ft-in) 9260 (30-5) |
| B | Maximum digging reach (on ground) | mm (ft-in) 9094 (2-10) |
| C | Maximum digging depth | mm (ft-in) 5786 (18-11) |
| D | Maximum digging height | mm (ft-in) 10674 (35-0) |
| E | Maximum dumping height | mm (ft-in) 8444 (27-8) |
| F | Maximum vertical wall cut depth | mm (ft-in) 4699 (15-5) |
| G | Minimum swing radius | mm (ft-in) 2227 (7-3) |
| | Bucket rotation | 182° |
| | Maximum dipper tearout (ISO 6015) | kgf (lbf) 7619 (16764) |
| | Maximum bucket tearout (ISO 6015) | kgf (lbf) 11839 (26104) |
| Dipper length: 3.05m (10ft 0in) | | |
| A | Maximum digging reach | mm (ft-in) 9592 (31-6) |
| B | Maximum digging reach (on ground) | mm (ft-in) 9463 (31-1) |
| C | Maximum digging depth | mm (ft-in) 6108 (20-0) |
| D | Maximum digging height | mm (ft-in) 10822 (35-6) |
| E | Maximum dumping height | mm (ft-in) 8672 (28-5) |
| F | Maximum vertical wall cut depth | mm (ft-in) 5211 (17-1) |
| G | Minimum swing radius | mm (ft-in) 2587 (8-6) |
| | Bucket rotation | 182° |
| | Maximum dipper tearout (ISO 5016) | kgf (lbf) 7003 (15439) |
| | Maximum bucket tearout (ISO 5016) | kgf (lbf) 11839 (26104) |



LIFT CAPACITIES – Dipper Length: 2.25m, 5.15m Monoboom, Trackshoes: 500mm, No bucket.
JS180 NLC MONO

| Reach | 1.5m (4ft 11in) | | 3m (9ft 10in) | | 4.5m (14ft 9in) | | 6m (19ft 8in) | | 7.5m (24ft 7in) | | Capacity at Max Reach | | | | |
|-------------------|-----------------|--------|---------------|-------|-----------------|------|---------------|-------|-----------------|------|-----------------------|----|-------|-------|------|
| | | | | | | | | | | | | | kg | kg | mm |
| Load Point Ht. | kg | kg | kg | kg | kg | kg | kg | kg | kg | kg | kg | kg | kg | mm | |
| 7.5m (24.7ft) | | | | | | | | | | | | | 3330* | 3330* | 4948 |
| 6.0m (19.8ft) | | | | | | | | 4050* | 3620 | | | | 2930* | 2930* | 6311 |
| 4.5m (14.9ft) | | | | | | | 5180* | 4770* | 3570 | | | | 2820* | 2730 | 7107 |
| 3.0m (9.10ft) | | | 10030* | 9340 | 6550* | 5160 | 5340* | 3430 | 3010* | 2470 | | | 2850 | 2450 | 7524 |
| 1.5m (4.11ft) | | | | | 7950* | 4840 | 5680 | 3280 | 3910* | 2410 | | | 3010* | 2360 | 7624 |
| 0m | | | 6020* | 6020* | 8610 | 4640 | 5560 | 3170 | | | | | 3350* | 2410 | 7420 |
| - 1.5m (- 4.11ft) | 5750* | 5750* | 9380* | 8410 | 8550 | 4590 | 5520 | 3140 | | | | | 4010* | 2650 | 6885 |
| - 3.0m (- 9.10ft) | 10200* | 10200* | 11300* | 8550 | 7990* | 4650 | | | | | | | 5530* | 3260 | 5927 |
| - 4.5m (- 14.9ft) | | | 8070* | 8070* | | | | | | | | | 5580* | 5260 | 4265 |

LIFT CAPACITIES – Dipper Length: 2.70m, 5.15m Monoboom, Trackshoes: 500mm, No bucket.
JS180 NLC MONO

| Reach | 1.5m (4ft 11in) | | 3m (9ft 10in) | | 4.5m (14ft 9in) | | 6m (19ft 8in) | | 7.5m (24ft 7in) | | Capacity at Max Reach | | | | |
|-------------------|-----------------|-------|---------------|-------|-----------------|------|---------------|-------|-----------------|------|-----------------------|-------|-------|-------|------|
| | | | | | | | | | | | | | kg | kg | mm |
| Load Point Ht. | kg | kg | kg | kg | kg | kg | kg | kg | kg | kg | kg | kg | kg | mm | |
| 7.5m (24.7ft) | | | | | | | | | | | | | 2560* | 2560* | 5530 |
| 6.0m (19.8ft) | | | | | | | | 3870* | 3710 | | | | 2310* | 2310* | 6779 |
| 4.5m (14.9ft) | | | | | | | 4670* | 4670* | 4400* | 3630 | 2360* | 2360* | 2230* | 2230* | 7530 |
| 3.0m (9.10ft) | | | 8600* | 8600* | 5990* | 5250 | 4980* | 3470 | 3800* | 2500 | | | 2260* | 2260* | 7928 |
| 1.5m (4.11ft) | | | 7100* | 7100* | 7410* | 4880 | 5660* | 3300 | 4120 | 2420 | | | 2380* | 2190 | 8027 |
| 0m | | | 6890* | 6890* | 8340* | 4630 | 5560 | 3160 | 4050 | 2360 | | | 2630* | 2230 | 7838 |
| - 1.5m (- 4.11ft) | 5480* | 5480* | 9500* | 8210 | 8480 | 4530 | 5480 | 3100 | | | | | 3100* | 2410 | 7339 |
| - 3.0m (- 9.10ft) | 8050* | 8050* | 11320* | 8330 | 7980* | 4550 | 5520 | 3130 | | | | | 4090* | 2870 | 6456 |
| - 4.5m (- 14.9ft) | | | 8860* | 8620 | 6080* | 4730 | | | | | | | 5210* | 4150 | 4985 |

LIFT CAPACITIES – Dipper Length: 3.05m, 5.15m Monoboom, Trackshoes: 500mm, No bucket.
JS180 NLC MONO

| Reach | 1.5m (4ft 11in) | | 3m (9ft 10in) | | 4.5m (14ft 9in) | | 6m (19ft 8in) | | 7.5m (24ft 7in) | | Capacity at Max Reach | | | | |
|-------------------|-----------------|--------|---------------|-------|-----------------|------|---------------|-------|-----------------|------|-----------------------|------|-------|-------|------|
| | | | | | | | | | | | | | kg | kg | mm |
| Load Point Ht. | kg | kg | kg | kg | kg | kg | kg | kg | kg | kg | kg | kg | kg | mm | |
| 7.5m (24.7ft) | | | | | | | | | | | | | 2200* | 2200* | 5803 |
| 6.0m (19.8ft) | | | | | | | | 3510* | 3510* | | | | 1980* | 1980* | 7041 |
| 4.5m (14.9ft) | | | | | | | 4170* | 4170* | 4050* | 3640 | 2750* | 2540 | 1910* | 1910* | 7801 |
| 3.0m (9.10ft) | | | 7320* | 7320* | 5430* | 5350 | 4590* | 3490 | 3720* | 2490 | | | 1930* | 1930* | 8218 |
| 1.5m (4.11ft) | | | 9770* | 8910 | 6800* | 4960 | 5240* | 3310 | 4110 | 2400 | | | 2020* | 2020* | 8346 |
| 0m | | | 6360* | 6360* | 7770* | 4660 | 5550 | 3160 | 4020 | 2330 | | | 2220* | 2060 | 8197 |
| - 1.5m (- 4.11ft) | 4350* | 4350* | 8440* | 8220 | 8040* | 4520 | 5450 | 3070 | 3980 | 2290 | | | 2570* | 2190 | 7756 |
| - 3.0m (- 9.10ft) | 7510* | 7510* | 10960* | 8280 | 7580* | 4500 | 5440 | 3060 | | | | | 3260* | 2540 | 6967 |
| - 4.5m (- 14.9ft) | 11650* | 11650* | 8690* | 8480 | 6110* | 4610 | | | | | | | 4390* | 3400 | 5681 |



Lift capacity front and rear.



Lift capacity full circle.

Notes:

- For lifting capacity including bucket, subtract total weight of bucket or bucket and quickhitch from above values.
- Lifting capacities are based on ISO 10567, that is: 75% of minimum tipping load or 87% of hydraulic lift capacity, whichever is the less. Lifting capacities marked* are based on hydraulic capacity.
- Lift capacities assume that the machine is on firm, level ground.
- Lift capacities may be limited by local regulations. Please refer to your dealer.

LIFT CAPACITIES – Dipper Length: 2.25m, 5.15m Monoboom, Trackshoes: 700mm, No bucket.
JS180 LC MONO

| Reach | 1.5m (4ft 11in) | | 3m (9ft 10in) | | 4.5m (14ft 9in) | | 6m (19ft 8in) | | 7.5m (24ft 7in) | | Capacity at Max Reach | | | |
|-------------------|-----------------|--------|---------------|--------|-----------------|-------|---------------|------|-----------------|------|-----------------------|-------|-------|------|
| | | | | | | | | | | | | | mm | |
| Load Point Ht. | kg | kg | kg | kg | kg | kg | kg | kg | kg | kg | kg | kg | mm | |
| 7.5m (24.7ft) | | | | | | | | | | | | 3330* | 3330* | 4948 |
| 6.0m (19.8ft) | | | | | | | 4050* | 3940 | | | | 2930* | 2930* | 6311 |
| 4.5m (14.9ft) | | | | | 5180* | 5180* | 4770* | 3890 | | | | 2820* | 2820* | 7107 |
| 3.0m (9.10ft) | | | 10030* | 10030* | 6550* | 5670 | 5290 | 3750 | 3010* | 2690 | | 3850* | 2680 | 7524 |
| 1.5m (4.11ft) | | | | | 7850 | 5330 | 5120 | 3590 | 3720 | 2640 | | 3010* | 2580 | 7624 |
| 0m | | | 6020* | 6020* | 7630 | 5140 | 5000 | 3490 | | | | 3350* | 2640 | 7420 |
| - 1.5m (- 4.11ft) | 5750* | 5750* | 9380* | 9380* | 7570 | 5080 | 4960 | 3450 | | | | 4010* | 2900 | 6885 |
| - 3.0m (- 9.10ft) | 10200* | 10200* | 11300* | 9640 | 7640 | 5140 | | | | | | 5130 | 3570 | 5927 |
| - 4.5m (- 14.9ft) | | | 8070* | 8070* | | | | | | | | 5580* | 5580* | 4265 |

LIFT CAPACITIES – Dipper Length: 2.70m, 5.15m Monoboom, Trackshoes: 700mm, No bucket.
JS180 LC MONO

| Reach | 1.5m (4ft 11in) | | 3m (9ft 10in) | | 4.5m (14ft 9in) | | 6m (19ft 8in) | | 7.5m (24ft 7in) | | Capacity at Max Reach | | | |
|-------------------|-----------------|-------|---------------|-------|-----------------|-------|---------------|-------|-----------------|-------|-----------------------|-------|-------|------|
| | | | | | | | | | | | | | mm | |
| Load Point Ht. | kg | kg | kg | kg | kg | kg | kg | kg | kg | kg | kg | kg | mm | |
| 7.5m (24.7ft) | | | | | | | | | | | | 2560* | 2560* | 5530 |
| 6.0m (19.8ft) | | | | | | | 3870* | 3870* | | | | 2310* | 2310* | 6779 |
| 4.5m (14.9ft) | | | | | 4670* | 4670* | 4400* | 3950 | 2360* | 2360* | | 2230* | 2230* | 7530 |
| 3.0m (9.10ft) | | | 8590* | 8590* | 5990* | 5770 | 4980* | 3790 | 3800* | 2720 | | 2260* | 2260* | 7928 |
| 1.5m (4.11ft) | | | 5740* | 5740* | 5740* | 5380 | 5150 | 3610 | 3730 | 2650 | | 2380* | 2380* | 8027 |
| 0m | | | 5880* | 5880* | 7620 | 5120 | 5000 | 3480 | 3670 | 2580 | | 2630* | 2440 | 7838 |
| - 1.5m (- 4.11ft) | 4960* | 4960* | 9140* | 9140* | 7510 | 5020 | 4930 | 3410 | | | | 3100* | 2640 | 7339 |
| - 3.0m (- 9.10ft) | 8830* | 8830* | 11450* | 9440 | 7540 | 5050 | 4960 | 3440 | | | | 4090* | 3150 | 6456 |
| - 4.5m (- 14.9ft) | | | 8810* | 8810* | 6080* | 5230 | | | | | | 5210* | 4570 | 4985 |

LIFT CAPACITIES – Dipper Length: 3.05m, 5.15m Monoboom, Trackshoes: 700mm, No bucket.
JS180 LC MONO

| Reach | 1.5m (4ft 11in) | | 3m (9ft 10in) | | 4.5m (14ft 9in) | | 6m (19ft 8in) | | 7.5m (24ft 7in) | | Capacity at Max Reach | | | |
|-------------------|-----------------|--------|---------------|-------|-----------------|-------|---------------|-------|-----------------|-------|-----------------------|-------|-------|------|
| | | | | | | | | | | | | | mm | |
| Load Point Ht. | kg | kg | kg | kg | kg | kg | kg | kg | kg | kg | kg | kg | mm | |
| 7.5m (24.7ft) | | | | | | | | | | | | 2200* | 2200* | 5803 |
| 6.0m (19.8ft) | | | | | | | 3510* | 3510* | | | | 1980* | 1980* | 7041 |
| 4.5m (14.9ft) | | | | | 4170* | 4170* | 4050* | 3970 | 2750* | 2750* | | 1910* | 1910* | 7801 |
| 3.0m (9.10ft) | | | 7320* | 7320* | 5430* | 5430* | 4590* | 3810 | 3720* | 2720 | | 1930* | 1930* | 8218 |
| 1.5m (4.11ft) | | | 9770* | 9770* | 6800* | 5460 | 5160 | 3630 | 3720 | 2630 | | 2020* | 2020* | 8346 |
| 0m | | | 6360* | 6360* | 7670 | 5160 | 4990 | 3470 | 3640 | 2550 | | 2220* | 2220* | 8197 |
| - 1.5m (- 4.11ft) | 4350* | 4350* | 8440* | 8440* | 7500 | 5010 | 4890 | 3380 | 3600 | 2510 | | 2570* | 2410 | 7756 |
| - 3.0m (- 9.10ft) | 7510* | 7510* | 10960* | 9360 | 7480 | 4990 | 4880 | 3370 | | | | 3260* | 2790 | 6967 |
| - 4.5m (- 14.9ft) | 11650* | 11650* | 8690* | 8690* | 6110* | 5100 | | | | | | 4390* | 3740 | 5681 |



Lift capacity front and rear.



Lift capacity full circle.

Notes:

- For lifting capacity including bucket, subtract total weight of bucket or bucket and quickhitch from above values.
- Lifting capacities are based on ISO 10567, that is: 75% of minimum tipping load or 87% of hydraulic lift capacity, whichever is the less. Lifting capacities marked* are based on hydraulic capacity.
- Lift capacities assume that the machine is on firm, level ground.
- Lift capacities may be limited by local regulations. Please refer to your dealer.

LIFT CAPACITIES – Dipper Length: 2.25m, 5.35m T.A.B., Trackshoes: 500mm, No bucket.
JS180 NLC T.A.B.

| Reach | 3m (9ft 10in) | | 4.5m (14ft 9in) | | 6m (19ft 8in) | | 7.5m (24ft 7in) | | Capacity at Max Reach | | |
|-------------------|---------------|-------|-----------------|-------|---------------|------|-----------------|------|-----------------------|-------|------|
| | | | | | | | | | | | |
| Load Point Ht. | kg | kg | kg | kg | kg | kg | kg | kg | kg | kg | mm |
| 9.0m (29.5ft) | 5690* | 5690* | | | | | | | 5240* | 5240* | 3123 |
| 7.5m (24.7ft) | | | 5230* | 5230* | | | | | 3530* | 3530* | 5463 |
| 6.0m (19.8ft) | 4290* | 4290* | 5030* | 5030* | 4950* | 3400 | | | 3040* | 2760 | 6720 |
| 4.5m (14.9ft) | 5630* | 5630* | 5900* | 5150 | 5110 | 3310 | | | 2850* | 2300 | 7472 |
| 3.0m (9.10ft) | | | 7680 | 4750 | 4920 | 3150 | 3510 | 2250 | 2800* | 2070 | 7869 |
| 1.5m (4.11ft) | | | 7260 | 4380 | 4740 | 2980 | 3440 | 2180 | 2880* | 2000 | 7964 |
| 0m | | | 7040 | 4190 | 4610 | 2860 | 3390 | 2140 | 3060* | 2050 | 7770 |
| - 1.5m (- 4.11ft) | 6280* | 6280* | 7000 | 4160 | 4580 | 2830 | | | 3470* | 2250 | 7261 |
| - 3.0m (- 9.10ft) | | | 5060* | 4250 | 3400* | 2920 | | | 3410* | 2920 | 5997 |

LIFT CAPACITIES – Dipper Length: 2.70m, 5.35m T.A.B., Trackshoes: 500mm, No bucket.
JS180 NLC T.A.B.

| Reach | 3m (9ft 10in) | | 4.5m (14ft 9in) | | 6m (19ft 8in) | | 7.5m (24ft 7in) | | Capacity at Max Reach | | |
|-------------------|---------------|-------|-----------------|-------|---------------|-------|-----------------|------|-----------------------|-------|------|
| | | | | | | | | | | | |
| Load Point Ht. | kg | kg | kg | kg | kg | kg | kg | kg | kg | kg | mm |
| 9.0m (29.5ft) | 5100* | 5100* | | | | | | | 3570* | 3570* | 4111 |
| 7.5m (24.7ft) | | | 4370* | 4370* | 3040* | 3040* | | | 2700* | 2700* | 6074 |
| 6.0m (19.8ft) | | | 4160* | 4160* | 4280* | 3490 | | | 2390* | 2390* | 7224 |
| 4.5m (14.9ft) | 4040* | 4040* | 4710* | 4710* | 4800* | 3380 | 3620 | 2350 | 2260* | 2110 | 7928 |
| 3.0m (9.10ft) | | | 7810 | 4850 | 4980 | 3190 | 3540 | 2280 | 2250* | 1920 | 8302 |
| 1.5m (4.11ft) | | | 7310 | 4420 | 4760 | 2990 | 3450 | 2190 | 2300* | 1850 | 8393 |
| 0m | 4320* | 4320* | 7020 | 4160 | 4600 | 2850 | 3370 | 2120 | 2460* | 1890 | 8208 |
| - 1.5m (- 4.11ft) | 6590* | 6590* | 6920 | 4090 | 4540 | 2790 | 3370 | 2110 | 2750* | 2050 | 7729 |
| - 3.0m (- 9.10ft) | 7190* | 7190* | 5790* | 4140 | 4210* | 2830 | | | 2930* | 2440 | 6837 |

LIFT CAPACITIES – Dipper Length: 3.05m, 5.35m T.A.B., Trackshoes: 500mm, No bucket.
JS180 NLC T.A.B.

| Reach | 3m (9ft 10in) | | 4.5m (14ft 9in) | | 6m (19ft 8in) | | 7.5m (24ft 7in) | | Capacity at Max Reach | | |
|-------------------|---------------|-------|-----------------|-------|---------------|-------|-----------------|------|-----------------------|-------|------|
| | | | | | | | | | | | |
| Load Point Ht. | kg | kg | kg | kg | kg | kg | kg | kg | kg | kg | mm |
| 9.0m (29.5ft) | | | 3530* | 3530* | | | | | 2880* | 2880* | 4759 |
| 7.5m (24.7ft) | | | 3800* | 3800* | 3400* | 3400* | | | 2270* | 2270* | 6526 |
| 6.0m (19.8ft) | | | 3550* | 3550* | 3780* | 3500 | 2480* | 2350 | 2040* | 2040* | 7606 |
| 4.5m (14.9ft) | 3160* | 3160* | 3910* | 3910* | 4160* | 3390 | 3620 | 2340 | 1940* | 1940 | 8277 |
| 3.0m (9.10ft) | 11140* | 9170 | 6740* | 4910 | 4990 | 3200 | 3530 | 2260 | 1910* | 1770 | 8637 |
| 1.5m (4.11ft) | | | 7370 | 4470 | 4760 | 2990 | 3420 | 2160 | 1970* | 1710 | 8723 |
| 0m | 4660* | 4660* | 7030 | 4170 | 4580 | 2830 | 3340 | 2080 | 2100* | 1740 | 8546 |
| - 1.5m (- 4.11ft) | 6400* | 6400* | 6900 | 4060 | 4500 | 2750 | 3300 | 2050 | 2350* | 1880 | 8087 |
| - 3.0m (- 9.10ft) | 7960* | 7590 | 6280* | 4080 | 4510 | 2760 | | | 2790* | 2190 | 7293 |



Lift capacity front and rear.



Lift capacity full circle.

Notes:

- For lifting capacity including bucket, subtract total weight of bucket or bucket and quickhitch from above values.
- Lifting capacities are based on ISO 10567, that is: 75% of minimum tipping load or 87% of hydraulic lift capacity, whichever is the less. Lifting capacities marked* are based on hydraulic capacity.
- Lift capacities assume that the machine is on firm, level ground.
- Lift capacities may be limited by local regulations. Please refer to your dealer.

LIFT CAPACITIES – Dipper Length: 2.25m, 5.35m T.A.B., Trackshoes: 700mm, No bucket.
JS180 LC T.A.B.

| Reach | 3m (9ft 10in) | | 4.5m (14ft 9in) | | 6m (19ft 8in) | | 7.5m (24ft 7in) | | Capacity at Max Reach | | |
|-------------------|---------------|-------|-----------------|-------|---------------|------|-----------------|------|-----------------------|-------|------|
| | | | | | | | | | | | |
| Load Point Ht. | kg | kg | kg | kg | kg | kg | kg | kg | kg | kg | mm |
| 9.0m (29.5ft) | 5690* | 5690* | | | | | | | 5240* | 5240* | 3123 |
| 7.5m (24.7ft) | | | 5230* | 5230* | | | | | 3530* | 3530* | 5463 |
| 6.0m (19.8ft) | 4290* | 4290* | 5030* | 5030* | 4950* | 3820 | | | 3040* | 3040* | 6720 |
| 4.5m (14.9ft) | 5630* | 5630* | 5900* | 5810 | 5710* | 3730 | | | 2850* | 2600 | 7472 |
| 3.0m (9.10ft) | | | 8180* | 5400 | 5650 | 3560 | 4020 | 2550 | 2800* | 2360 | 7869 |
| 1.5m (4.11ft) | | | 8470 | 5020 | 5460 | 3390 | 3940 | 2490 | 2880* | 2280 | 7964 |
| 0m | | | 8240 | 4830 | 5330 | 3270 | 3900 | 2440 | 3060* | 2340 | 7770 |
| - 1.5m (- 4.11ft) | 6280* | 6280* | 7190* | 4790 | 5290 | 3240 | | | 3470* | 2570 | 7261 |
| - 3.0m (- 9.10ft) | | | 5060* | 4880 | 3400* | 3330 | | | 3410* | 3330 | 5997 |

LIFT CAPACITIES – Dipper Length: 2.70m, 5.35m T.A.B., Trackshoes: 700mm, No bucket.
JS180 LC T.A.B.

| Reach | 3m (9ft 10in) | | 4.5m (14ft 9in) | | 6m (19ft 8in) | | 7.5m (24ft 7in) | | Capacity at Max Reach | | |
|-------------------|---------------|-------|-----------------|-------|---------------|-------|-----------------|------|-----------------------|-------|------|
| | | | | | | | | | | | |
| Load Point Ht. | kg | kg | kg | kg | kg | kg | kg | kg | kg | kg | mm |
| 9.0m (29.5ft) | 5100* | 5100* | | | | | | | 3570* | 3570* | 4111 |
| 7.5m (24.7ft) | | | 4370* | 4370* | 3040* | 3040* | | | 2700* | 2700* | 6074 |
| 6.0m (19.8ft) | | | 4160* | 4160* | 4280* | 3910 | | | 2390* | 2390* | 7224 |
| 4.5m (14.9ft) | 4040* | 4040* | 4710* | 4710* | 4800* | 3800 | 3760* | 2650 | 2260* | 2260* | 7928 |
| 3.0m (9.10ft) | | | 7850* | 5510 | 5710 | 3610 | 4050 | 2580 | 2250* | 2190 | 8302 |
| 1.5m (4.11ft) | | | 8540 | 5070 | 5480 | 3410 | 3950 | 2490 | 2300* | 2120 | 8393 |
| 0m | 4320* | 4320* | 8220 | 4800 | 5320 | 3260 | 3880 | 2430 | 2460* | 2160 | 8208 |
| - 1.5m (- 4.11ft) | 6590* | 6590* | 7610* | 4720 | 5250 | 3200 | 3870 | 2420 | 2750* | 2340 | 7729 |
| - 3.0m (- 9.10ft) | 7190* | 7190* | 5790* | 4780 | 4210* | 3250 | | | 2930* | 2790 | 6837 |

LIFT CAPACITIES – Dipper Length: 3.05m, 5.35m T.A.B., Trackshoes: 700mm, No bucket.
JS180 LC T.A.B.

| Reach | 3m (9ft 10in) | | 4.5m (14ft 9in) | | 6m (19ft 8in) | | 7.5m (24ft 7in) | | Capacity at Max Reach | | |
|-------------------|---------------|-------|-----------------|-------|---------------|-------|-----------------|-------|-----------------------|-------|------|
| | | | | | | | | | | | |
| Load Point Ht. | kg | kg | kg | kg | kg | kg | kg | kg | kg | kg | mm |
| 9.0m (29.5ft) | | | 3530* | 3530* | | | | | 2800* | 2880* | 4759 |
| 7.5m (24.7ft) | | | 3800* | 3800* | 3400* | 3400* | | | 2270* | 2270* | 6526 |
| 6.0m (19.8ft) | | | 3550* | 3550* | 3780* | 3780* | 2480* | 2480* | 2040* | 2040* | 7606 |
| 4.5m (14.9ft) | 3160* | 3160* | 3910* | 3910* | 4160* | 3810 | 3650* | 2650 | 1940* | 1940* | 8277 |
| 3.0m (9.10ft) | 11140* | 10580 | 6740* | 5570 | 5360* | 3620 | 4040 | 2570 | 1910* | 1910* | 8637 |
| 1.5m (4.11ft) | | | 8410* | 5110 | 5490 | 3410 | 3970 | 2470 | 1970* | 1960 | 8723 |
| 0m | 4660* | 4660* | 8240 | 4810 | 5300 | 3240 | 3840 | 2390 | 2100* | 2000 | 8546 |
| - 1.5m (- 4.11ft) | 6400* | 6400* | 7870* | 4690 | 5210 | 3160 | 3810 | 2360 | 2350* | 2150 | 8087 |
| - 3.0m (- 9.10ft) | 7960* | 7960* | 6280* | 4720 | 4620* | 3180 | | | 2790* | 2510 | 7293 |



Lift capacity front and rear.



Lift capacity full circle.

Notes:

- For lifting capacity including bucket, subtract total weight of bucket or bucket and quickhitch from above values.
- Lifting capacities are based on ISO 10567, that is: 75% of minimum tipping load or 87% of hydraulic lift capacity, whichever is the less. Lifting capacities marked* are based on hydraulic capacity.
- Lift capacities assume that the machine is on firm, level ground.
- Lift capacities may be limited by local regulations. Please refer to your dealer.

A GLOBAL COMMITMENT TO QUALITY

JCB's total commitment to its products and customers has helped it grow from a one-man business into Britain's largest privately owned manufacturer of backhoe loaders, crawler excavators, wheeled excavators, telescopic handlers, wheeled loaders, dump trucks, rough terrain fork lifts, industrial fork lifts, mini/midi excavators, skid steer loaders and tractors.

By making constant and massive investments in the latest production technology, the JCB factories have become some of the most advanced in Europe.

By leading the field in innovative research and design, extensive testing and stringent quality control, JCB machines have become renowned all over the world for performance, value and reliability.

And with a global sales and service network of over 400 distributors and agents, the company exports over 70% of its production to all five continents.

Through setting the standards by which others are judged, JCB has become one of Britain's most impressive success stories.

