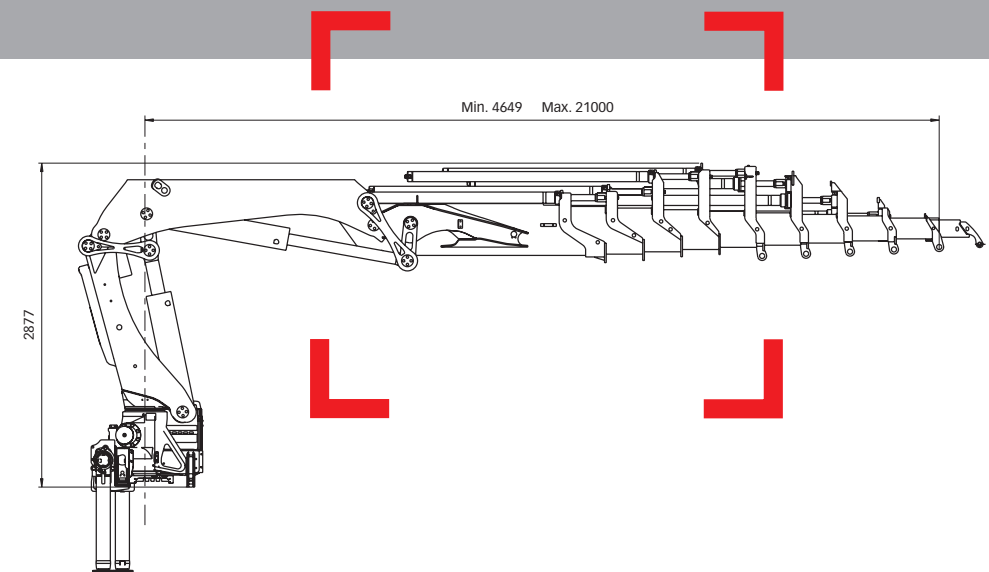


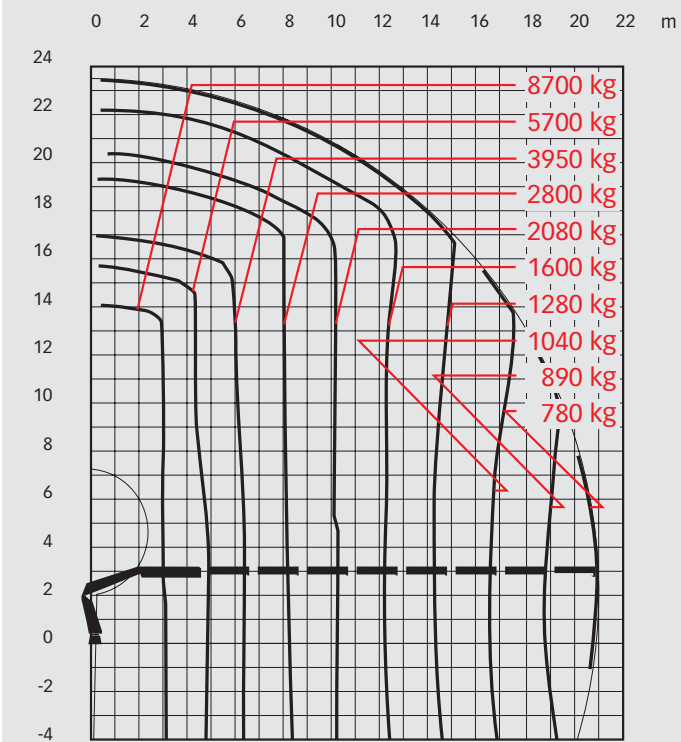
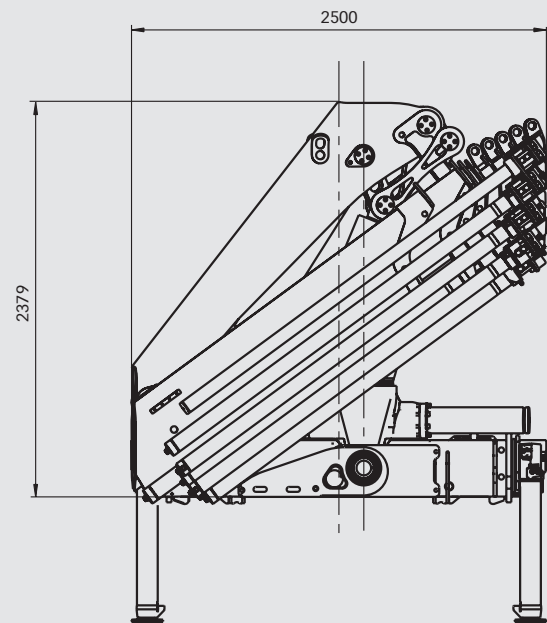
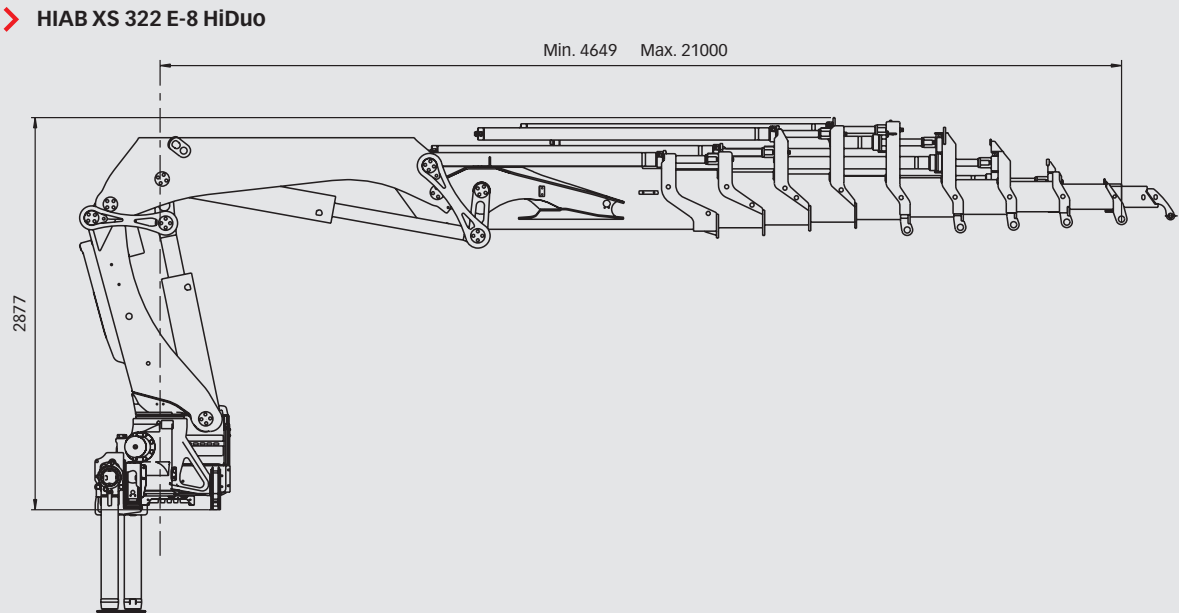
HIAB **XS** 322 HiDuO Capacity 30 tm



Basic data

HIAB
 XS
 322 HiDuo
 Basic data

Technical data	EP-2 HiDuo	EP-3 HiDuo	E-4 HiDuo	E-6 HiDuo	E-8 HiDuo
Max. lifting capacity (kNm)	297	291	283	272	262
Outreach - hydraulic extensions (m)	8.0	10.3	11.7	16.2	21.0
Outreach - manual extensions (m)	-	-	16.2	20.1	22.6
Outreach / Lifting capacity (m / kg)	2.9 / 10000	2.8 / 10000	2.9 / 9400	3.0 / 9000	3.0 / 8700
	4.2 / 7200	4.3 / 6900	4.3 / 6700	4.5 / 6100	4.7 / 5700
	5.9 / 5100	6.0 / 4850	5.9 / 4750	6.1 / 4300	6.3 / 3950
	7.9 / 3850	8.0 / 3600	7.8 / 3500	7.9 / 3150	8.1 / 2800
	-	10.2 / 2800	9.7 / 2760	9.8 / 2400	10.0 / 2080
	-	-	11.7 / 2280	11.8 / 1920	12.0 / 1600
	-	-	-	13.9 / 1580	14.1 / 1280
	-	-	-	16.1 / 1340	16.3 / 1040
	-	-	-	-	18.6 / 890
	-	-	-	-	20.9 / 780
Slewing angle	420°	420°	420°	420°	420°
Height in folded position (mm)	2380	2380	2380	2380	2380
Width in folded position (mm)	2500	2500	2500	2500	2500
Installation space needed (mm)	1120	1200	1150	1230	1260
Weight - "standard" crane without stabilizers (kg)	2950	3160	3400	3760	4050
Weight - stabilizer equipment (kg)	505 - 585	505 - 585	505 - 585	505 - 585	505 - 585



Disclaimer
 Hiab cranes have been built to meet the highest standards of safety and service life and have been thoroughly tested. Strength calculations for this model have been carried out in accordance with EN13001. Hiab's certified Quality Assurance System complies with the ISO 9001. Some of the items in our literature may be extra equipment. Certain applications may require an official permit. We reserve the right to change technical specifications without prior notice. Hiab cranes produced for EU-countries are CE-marked and comply with the European Standard EN 12999.