

work

– the 933G's
dependable
answer to the
profit problem.



933G owners praise its profit-making features:

"Caterpillar-built machines are a little more expensive to buy, but on a cost-per-meter basis they cost less..."

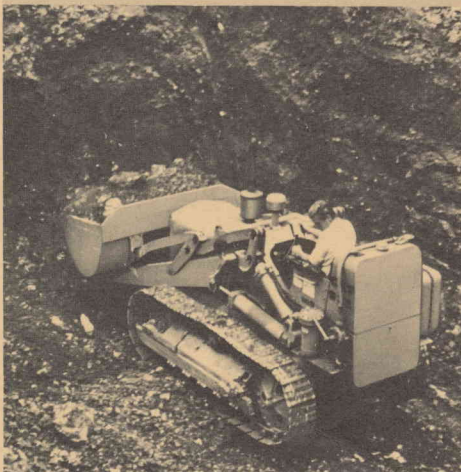
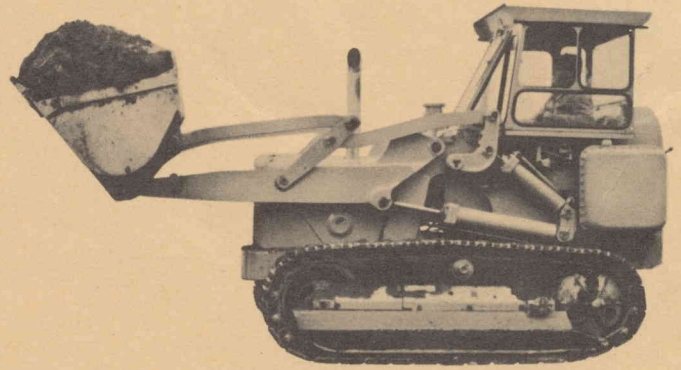
"Customers like my reliable Caterpillar-built equipment because they know their jobs will be done on time. From 1961, when I bought my first Cat 933 Traxcavator, my general contracting firm has had a constant growth of 20% a year", says Monsieur Pierre Duval, Entreprise Duval, Le Cannet, France. M. Duval's claims are not surprising. His 933's have had no unscheduled downtime in 8500 hours. He will soon be buying a larger loader built by Caterpillar.

"...quick, precise work with fast hydraulics."

Mr. Hans Huber's partnership, Huber Gartenbau in Wohlen, Switzerland, is a small company who depend on their machines for profit on a steady daily basis. Huber Gartenbau specialize in excavating, building site preparation and large, decorative gardens. Mr. Huber says "We are 100% convinced Caterpillar track-type loaders are superbly built. We rely on the 933G's powerful engine, hydraulic system and automatic bucket controls for fast, precise work. These features allow us to dig better loads and dump them faster."

"Caterpillar Dealer after-sales service is very efficient: parts are always available",

was the comment of another general contractor, Herr Mäule, co-owner of Bazer & Michel in Heilbronn, Germany. Getting jobs done on time, again and again, has guaranteed the growth of Herr Mäule's business. His 933F has recorded 99% availability over 6 years' work. The result? He can now buy an even higher production model — the 955H.

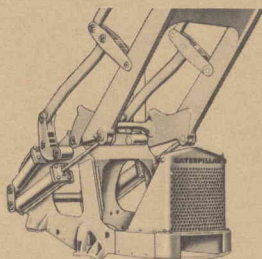


What makes the 933G such a dependable profit-earner?

Steady production at low operating cost. Your profit margin is protected by its excellent combination of economy, availability and sustained high output. How does the 933G do it? Here are some of the features which have gained this loader's profit-making reputation.

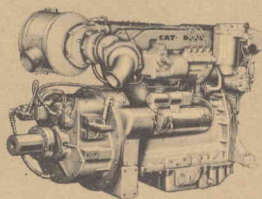
Integral design adds to balance — reduces deadweight

The 933G is not just an adaptation of a tractor built for another purpose. Its loader frame is a strong, integral part of the machine's design. A machine designed as a loader "from the ground up" assures strength, stability and balance.



Reliable Cat Engine with trouble-free fuel system

The 933G's Caterpillar engine, in particular, deserves your special attention. This 60 flywheel HP turbocharged diesel is capable of full-throttle work all day, every day, without power fall-off. Its maintenance-free fuel system with accurate pumps and non-clogging injectors provides full power instantly, even after prolonged engine idling. Precombustion chamber design ensures complete fuel utilization, enabling less expensive grades to be burned.

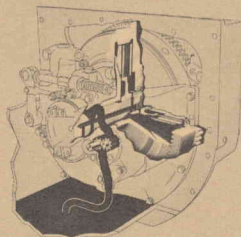


Earnings secure with high trade-in value

Why do Caterpillar track-type Loaders command consistently high resale values? Because of the recognized quality and profit-making potential of Cat-built machines. Assurance of good trade-in value is further security for your earnings.

Long-life oil clutch cuts maintenance

The Caterpillar oil clutch normally runs for over 2000 hours before even a minor adjustment becomes necessary. Just one of the many time-saving features of the 933G.



Fast hydraulics — with power in reserve

The 933G's bucket is actuated by fast-response hydraulics. Pressure is maintained by a durable, self-compensating vane-type pump. Ample hydraulic power in reserve means faster work — jobs finished on time.

Complete, reliable and fast Dealer Service

Application advice

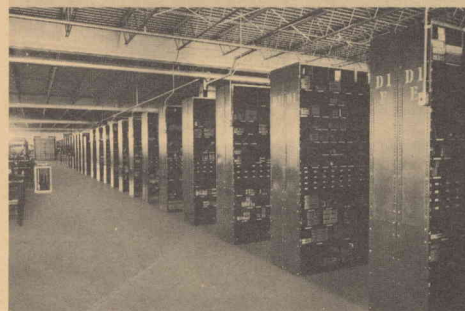
Call in your local Caterpillar Dealer for analysis of your machine requirements. He will be pleased to help you — without obligation on your part.

Quick parts availability

Every machine needs occasional parts. Your Dealer keeps a large stock of all parts usually required. The more infrequently needed items are stocked in one of Caterpillar's many emergency depots where they can be shipped at short notice.

Qualified Service

When the time comes for overhaul, fully-trained Dealer technicians get your machine back on the job fast. You can rely on your Caterpillar Dealer to keep your machine where it belongs — on the job, earning profits.



Specifications

Caterpillar 933G Traxcavator

Main features

- Choice of six buckets (three general-purpose; one rock; one quarry; one multi-purpose) sized from $1\frac{1}{8}$ to $1\frac{1}{2}$ cu. yd. (0,86 to 1,15 m³).
- Fast, dependable hydraulic system with automatic bucket controls.
- 60 flywheel HP Cat Diesel Engine with adjustment-free fuel system.
- Quick-shift forward-reverse lever.
- Cat oil clutch for longer life.
- Heavy-duty undercarriage with rollers and idlers lubricated for life.
- Patented Sealed Track extends pin and bushing life up to 30%.

Engine

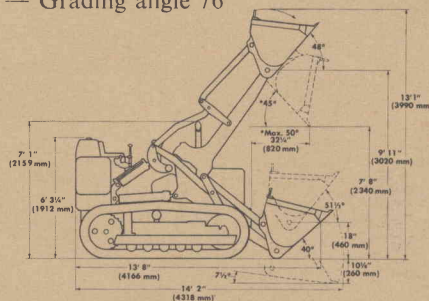
- Horsepower (Flywheel) 60 at 1900 RPM.
- Caterpillar four-stroke-cycle diesel Model D320 with four cylinders, 4" (101,6 mm) bore, 5" (127,0 mm) stroke and 251 cubic inch (4,116 lit.) piston displacement. Turbocharged with individual adjustment-free fuel injection pumps and valves, and non-fouling precombustion chambers.
- Stellite-faced valves, hard alloy steel seats, valve rotators.

Travel Speed (at rated engine speed)

	Forward		Reverse	
	miles/ hour	km/ hour	miles/ hour	km/ hour
First	1.6	2,6	2.0	3,2
Second	2.3	3,7	2.9	4,7
Third	3.4	5,5	4.2	6,8
Fourth	5.8	9,3	7.2	11,6

Dimensions

- Width 70" (1778 mm)
- Ground clearance (from ground face of shoe) $12\frac{1}{2}$ " (318 mm)
- Maximum bucket tilt-back (60° — 1520 mm — off ground) $58\frac{1}{2}^\circ$
- Grading angle 76°



Ask for a demonstration of the
Caterpillar 933G Traxcavator.

Track

- Track frame: Five-roller, non-oscillating
- Track gauge 54" (1372 mm)
- Number of shoes (each side) 34
- Width of standard track shoes 12" (305 mm)
- Length of track on ground $74\frac{1}{2}$ " (1892 mm)
- Ground contact area 1788 sq. in. (1,15 m²)

Standard Equipment

- Air cleaner service indicator
- Blower fan
- Crank-case guard
- Hood side doors
- Tool compartment
- Disconnect switch with key
- Heavy-duty radiator guard
- 500 lb. (227 kg) counterweight
- $1\frac{1}{4}$ cu. yd. (0,96 m³) General Purpose bucket.

Shipping Weight, approx.

includes lubricants, coolant, and 5 U.S. gallons (19 lit.) of fuel 17,500 lb. (7900 kg)

CATERPILLAR

Caterpillar, Cat and Traxcavator are Registered Trademarks of Caterpillar Tractor Co.

THE ISRAEL TRACTORS & EQUIPMENT CO. LTD.

Tel-Aviv, Israel

Haifa, Israel