

# SENEBOGEN



**164 kW** (Stage IIIa)



**168 kW** (Stage V)

**132 kW** (Electro)



**38 - 43.5 t**



**14 - 17 m**

**MAXCAB**

# 830E

Mobile material handling machine

Stage V

# 830E Advanced. The E-Series



1962: rope-driven S833 with elevated operator cab

## What makes up the E-Series

- More than 65 years of experience in designing and constructing hydraulic material handling machines
- Uncompromisingly high performance in all areas: Focus on material handling
- Technology that can be mastered: High-quality components without over-engineering
- Long product service life and high value retention

## Your top benefits

1

### Green Efficiency

Safe fuel - reduce operating costs  
Work quietly - protect operator and environment



2

### Peak performance

Durable mechanical systems - stressed parts optimized  
High speeds - high load capacities

3

### Maximum usability

Comfortable Maxcab operator cab - relaxed work  
SENCON - work program selection made easy



4

### Maximum safety

Safe entry and exit - no-slip steps  
State-of-the-art camera - entire work area in view

5

### Maintenance and service made easy

SENNEBOGEN Control System SENCON - easy diagnosis  
Easy Maintenance - clear labeling

6

### Consultation and support in your area

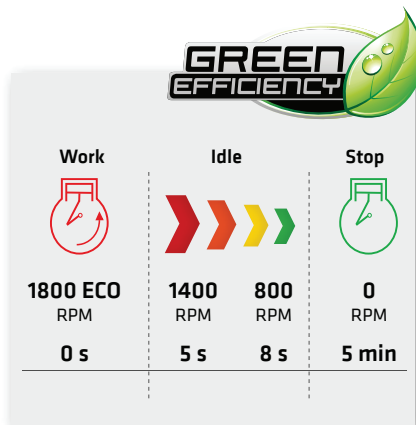
3 production sites - 2 subsidiaries  
more than 130 sales partners - worldwide and also in your area





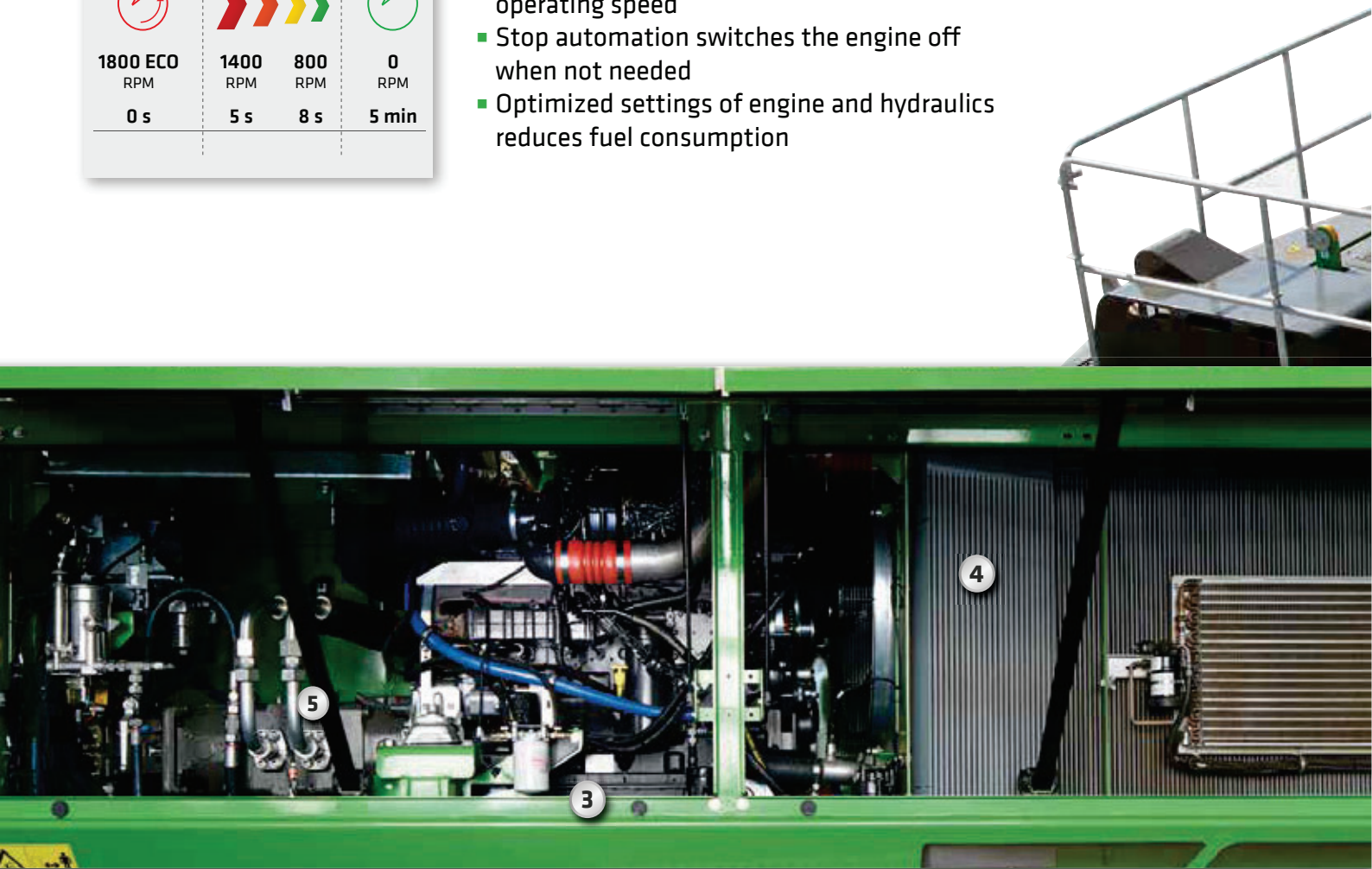
Subject to technical changes. Further options available upon request.

# 830E The E-Series. At a glance.



## Four ways to save fuel

- Up to 20% savings: working in Eco Mode with reduced engine speed
- Idle automation reduces speed to 40% of operating speed
- Stop automation switches the engine off when not needed
- Optimized settings of engine and hydraulics reduces fuel consumption



## Quiet operation 3

- Consistently quiet operation thanks to decoupled engine mounts and soundproofing in the doors
- Soundpower level according to 2000/14/EC up to 2 dB lower than required

## High-capacity cooling 4

- Constant, reliable performance thanks to large-dimensioned and robust fans and coolers
- Water and oil coolers with top-notch efficiency thanks to axial-piston pump and motor control and ondemand thermostatic control
- Fan reversal for cleaning in series

4 Subject to technical changes. Further options available upon request.



## Maximum safety

- No-slip work surfaces
- Hand rails\* **1**
- 2 cameras to the right and rear
- Platform with railing next to cab sliding door **2**

## Powerful hydraulic system **5**

- Strong pumps with power reserves
- Top efficiency thanks to large-dimensioned hydraulic valves and lines
- Extra-long change intervals of 4,000 operating hours through initial fill-up with special oil with extended service life when using SENNEBOGEN HydroClean\*

Subject to technical changes. Further options available upon request.

\* Option



The premium cab.

## Panoramic view

### Features

- optimum cab climate with automatic air conditioning system, partial tinted glass
- pleasant and equal temperature dispersion by means of 9 nozzles
- panoramic view
- climatic comfort seat with air suspension and air conditioning\*
- very quiet through optimized noise insulation
- Highest safety & comfort with sliding door, wide door opening
- ergonomically arranged operating controls for fatigue-free and relaxed working
- 12 V, 24 V, and USB charging sockets hands-free telephone preparation, document box
- various options: electric cooler behind`s, protective covers, seat air conditioning

### Our SENNEBOGEN joysticks

- consoles and ergonomic joysticks that move with the seat
- pleasant grip through ergonomic design
- precise control of all movements through direct and sensitive function activation
- quick access to all operating controls through optimized design of all push-buttons and switches

# **830E** Maintenance and service made easy.



## **Optimized for maintenance**

- Fast and easy diagnosis thanks to straightforward and clearly labeled electrical distributor
- Easy access to all service points on the machine
- Automatic central lubrication for equipment and slewing gear raceway



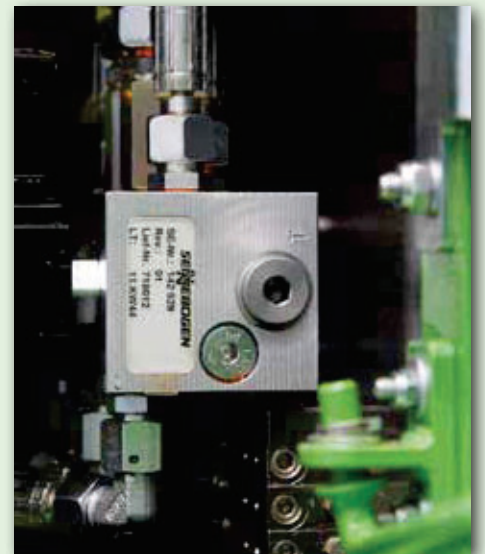
## **Hydro Clean\***

- Optimal protection of hydraulic components thanks to 3 µm micro-filter
- Cleaner hydraulic oil, longer service life



## **Central measuring points**

- Easily accessible
- Quickly inspect entire hydraulic system



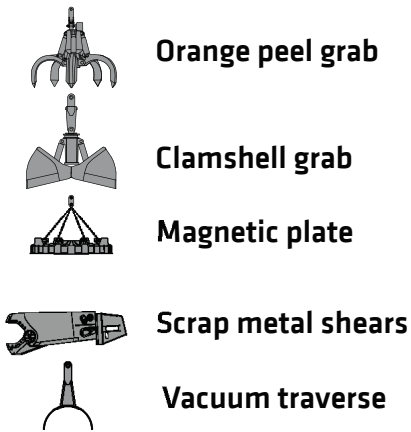
## **Clear labeling**

- All parts labeled with a unique part number
- Easy and reliable spare parts ordering

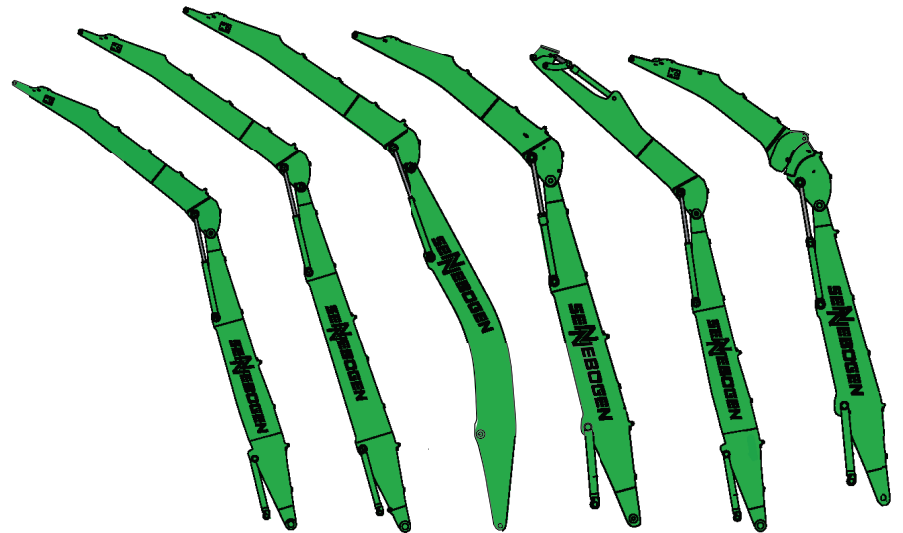
\* Option

# 830E Modular design - versatile solutions

## Attachments



## Equipment options (others available upon request)



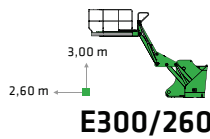
## Cabs

### Cab elevation

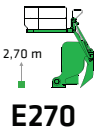
K15      K17      B16      K14      K14 ULM      K13 VT



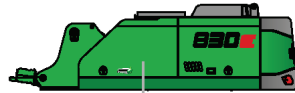
Maxcab



Maxcab Industry



## Uppercarriage



Diesel-hydraulic drive



Electrohydraulic drive

Options

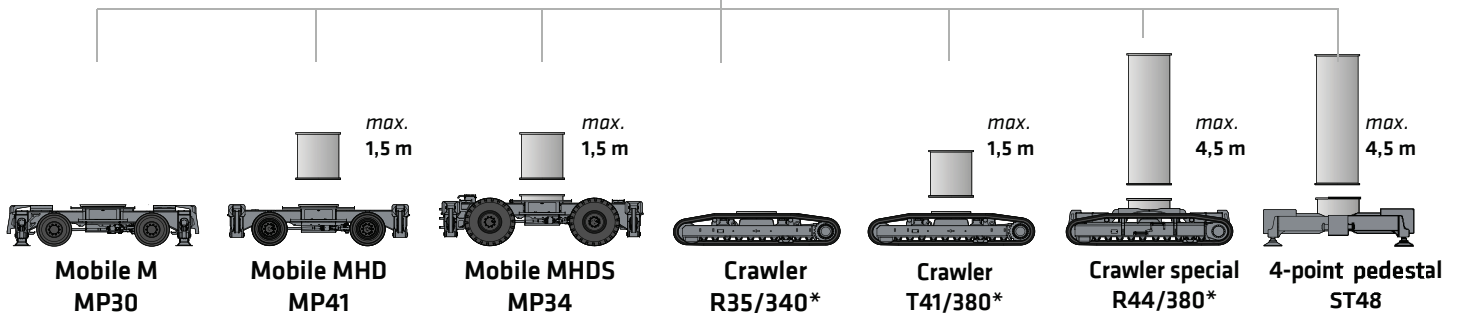


Motorized cable reel



Transformer

## Undercarriage variants





# **830E** Advantages at a glance



Reliable operation through robust and FEM-optimized equipment

Sliding door for convenient entry and exit

Safe entry and exit thanks to platform with railing

Better illumination of the work area through powerful LED headlights\*

High load capacities even when fully extended, thanks to massive cylinders

Safe entry and exit thanks to railings\*, grip handles and no-slip steps

Ideal overview and safe working height thanks to stable cab elevation

Robust side cover made of recyclable sheet steel

High stability due to the broad outrigger area

\* Option

# 830E Technical data, equipment

## MACHINE TYPE

Model (type) **830**

## ENGINE

Power	<p><b>Stage V:</b> Rated Power: 168 kW at 2200 rpm 188 kW at 1900 rpm</p> <p><b>Stage IIIa:</b> Rated Power: 164 kW at 2000 rpm 172 kW at 1800 rpm</p>
Model	<p><b>Cummins 6.7</b> Direct injection, turbo charged, charge air cooler, reduced emissions, Eco Mode, idle automation, stop automation</p>
Cooling	Water-cooled
Diesel filter	with water separator and heating system
Air filter	Dry filter with integrated pre-separator, automatic dust discharge, main element and safety element, contamination indicator
Fuel tank	<b>450 l</b>
DEF tank	<b>45 l</b>
Electr. system	<b>24 V</b>
Batteries	<b>2 x 150 Ah</b> , main switch
Options	<ul style="list-style-type: none"> <li>■ Engine block heater for temperatures below -20 °C</li> <li>■ Electric fuel pump</li> <li>■ Jump-start battery terminals</li> </ul>

## UPPERCARRIAGE

Design	Torsion-resistant box design, precision crafted, steel bushings for boom bearings. Extremely service-friendly design, longitudinal engine
Central lubrication	Automatic central lubrication for equipment and slewing gear
Electrical system	Central electrical distributor, battery disconnect switch
Cooling system	3-circuit cooling system with high cooling output, thermostatically regulated fan drive for oil cooler and water cooler, fan reversal for cleaning
Options	<ul style="list-style-type: none"> <li>■ Slewing gear brake via foot pedal</li> <li>■ Hand rail at the upper structure for additional safety</li> <li>■ LED lighting packages</li> <li>■ Fire extinguisher</li> <li>■ Sea climate resistant coating</li> <li>■ Electric heater for hydraulic tank</li> </ul>

## Options

- Low-temperature packages
- Hydraulically driven magnetic generator 15 kW/20 kW
- Telematic system SENtrack DS



## HYDRAULIC SYSTEM


Load sensing / LUDV hydraulic system for hydraulic, pilot-controlled work functions	
Pump type	Swashplate-type variable-displacement piston pump, load pressure-independent flow distribution for simultaneous, independent control of work functions
Pump control	Zero-stroke control, on-demand flow control – the pumps only pump as much oil as will actually be used, pressure purging, load limit sensing control
Delivery rate	<b>520 l/min</b>
Operating pressure	<b>max. 350 bar</b>
Filtration	High-performance filtration with long change interval
Hydraulic tank	<b>310 l</b>
Control system	Proportional, precision hydraulic actuation of work movements, 2 hydraulic servo joysticks for the work functions, additional functions via switches and foot pedals
Safety	Hydraulic circuits secured with safety valves, emergency lowering of the equipment at engine standstill, pipe fracture safety valves for lift cylinder and stick cylinder
Options	<ul style="list-style-type: none"> <li>■ Bio-oil – environmentally friendly</li> <li>■ ToolControl for programming pressure/rate for up to 10 tools</li> <li>■ Additional hydraulic circuit for shear attachment</li> <li>■ Load moment warning with capacity utilization indicator</li> <li>■ Overload safeguard with overload shutdown</li> <li>■ 3 µm hydraulic micro-filter - SENNEBOGEN HydroClean</li> </ul>


## SLEWING DRIVE



Gearbox	Compact planetary gear with bent-axis hydraulic motor, integrated brake valves
Parking brake	Spring-loaded multi-disk brake
Slewing ring	Strong slewing ring, sealed
Slewing speed	0-8 rpm, variable


# 830E Technical data, equipment

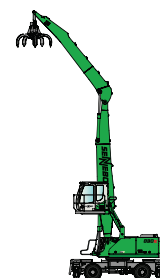
 <b>CAB</b> 	
Cab type	Hydraulically elevating cab E270
Cab equipment	Sliding door, excellent ergonomics, climate automation, seat heater, air-suspension comfort seat, fresh air filter / circulating air filter, joystick steering, 12 V / 24 V connections, SENCON
Options	<ul style="list-style-type: none"> <li>■ active seat air conditioning</li> <li>■ Auxiliary heating system with timer</li> <li>■ Cabs with active carbon filter</li> <li>■ Armored-glass windshield</li> <li>■ Armored-glass sunroof</li> <li>■ Safety side window and rear window</li> <li>■ Rolling shade for roof window and windshield</li> <li>■ Protection guards</li> <li>■ FOPS protective roof grating</li> <li>■ Protective front grating</li> <li>■ Radio with speakers</li> <li>■ Maxcab industrial cab with undivided armored glass windshield</li> <li>■ electrical cooler</li> </ul>

 <b>EQUIPMENT</b>	
Design	Decades of experience, state-of-the-art computer simulation, highest level of stability, longest service life, large-dimensioned and low-maintenance bearing points, sealed special bearing bushes, precision-crafted, quick-release couplings on the connections - open/close/rotate grapple
Cylinders	Hydraulic cylinders with high-quality sealing and guide elements, end position damping, sealed bearing points
Options	<ul style="list-style-type: none"> <li>■ Ball valves on the hydraulic lines - open and close grab</li> <li>■ nickel-plated and chrome-plated</li> <li>■ Float position of the equipment</li> <li>■ Hoisting limiter / stick limitation adjustable for stop settings, e.g. in the hall</li> <li>■ Multi-coupling</li> </ul>

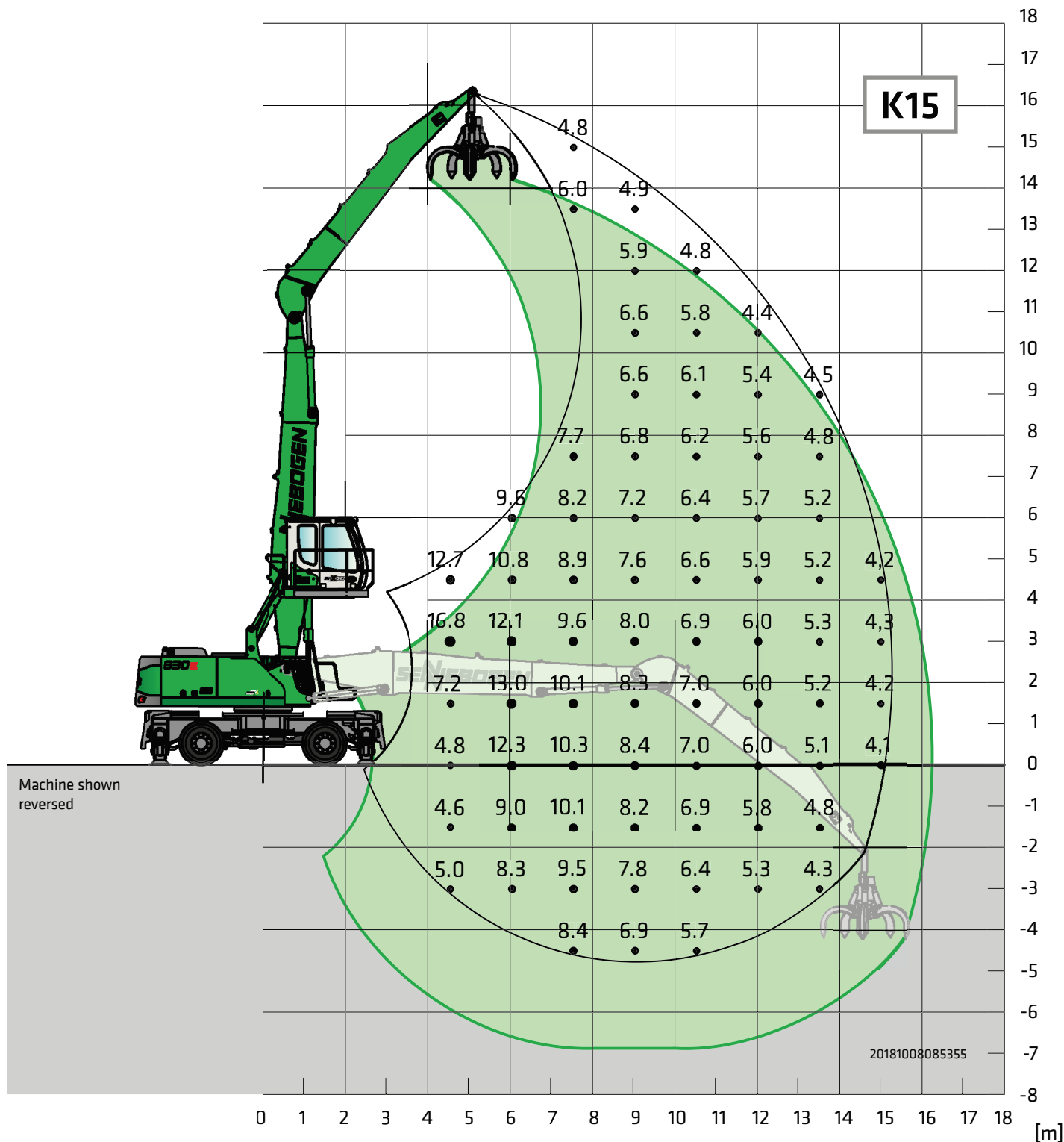
 <b>UNDERCARRIAGE</b>	
Design	Strong mobile undercarriage with integrated 4-point outriggers, steering axle as hydraulically locking pendulum axle, pendulum axle cylinder with pipe fracture safety valves
Drive	All-wheel drive powered by a variable-displacement hydraulic motor with direct-mounted, automatically actuated brake valve and 2-stage power shift transmission, strong planetary axles with integrated steering cylinders, service brake in 2-circuit system
Parking brake	Spring-loaded multi-disk brake
Tires	<b>M:</b> solid-rubber tires <b>12.00-20</b> , 8x <b>MHD:</b> solid-rubber tires <b>12.00-20</b> , 8x <b>MHDS:</b> solid-rubber tires <b>16.00-25</b> , 4x <b>Trailer:</b> pneumatic tires <b>650/65-R25</b> , 4x
Speed	0 - 7 km/h stage I 0 - 20 km/h stage II Trailer 25 km/h
Options	<ul style="list-style-type: none"> <li>■ <b>MHD:</b> pneumatic tires <b>12.00-20</b>, 8x</li> <li>■ <b>MHDS:</b> pneumatic tires <b>20.50-R25</b>, 4x</li> <li>■ Additional pushing blade for 4-point outriggers</li> <li>■ Individual outrigger actuation</li> <li>■ Protection for travel drive, shunting coupling</li> </ul>

 <b>ELECTRIC DRIVE</b> 	
Option	<ul style="list-style-type: none"> <li>■ Power: <b>132 kW / 400 V / 50 Hz</b> Total connected load 270 kVA, machine fusing 315 A at 400 V - motor start-up via star-delta circuit</li> <li>■ Alternative power: <b>160 kW / 400 V / 50 Hz</b></li> <li>■ Advantages: lowest operating costs, quiet and virtually vibration-free work, long service life of hydraulic components</li> </ul>

 <b>OPERATING WEIGHT</b>	
Mass	<b>830 M</b> with MP30E, operating equipment K17 and grab 600   <b>approx. 38,500 kg</b>  <b>830 MHD</b> with MP41, operating equipment K17 and grab 600   <b>approx. 40,000 kg</b>
Notice	The operating weight varies depending on the model.



# 830E Load ratings



Undercarriage **MP30**

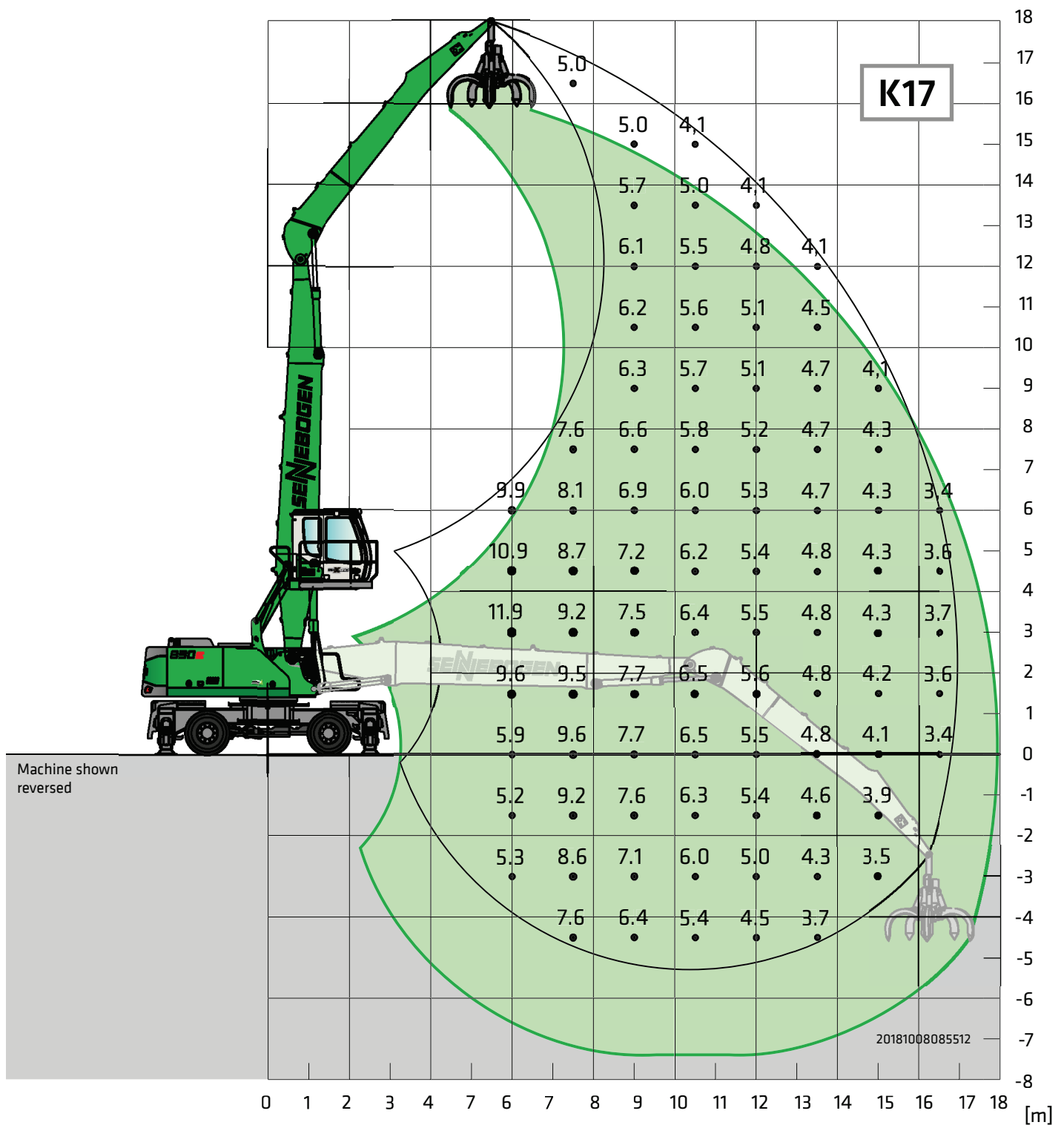
Compact boom **8.5 m**  
Grab stick **7.0 m**

Cab **Maxcab E270, hydraulically elevating**

All load ratings are specified in tons (t) and apply at the end of the stick, without attachment, on a solid, level substrate. Attachments, such as grapple, magnet, load hook, etc. are part of the specified load ratings. The specified values are 75 % of the static tipping load or 87 % of the hydraulic lifting force in accordance with ISO 10567. In accordance with the EU standard EN 474-5, material loaders in hoist operation must be equipped with pipe fracture safety devices on hoist cylinders and an overload warning device.

The specified load ratings apply 360° on the crawler undercarriage; telescopic undercarriages must be completely extended.

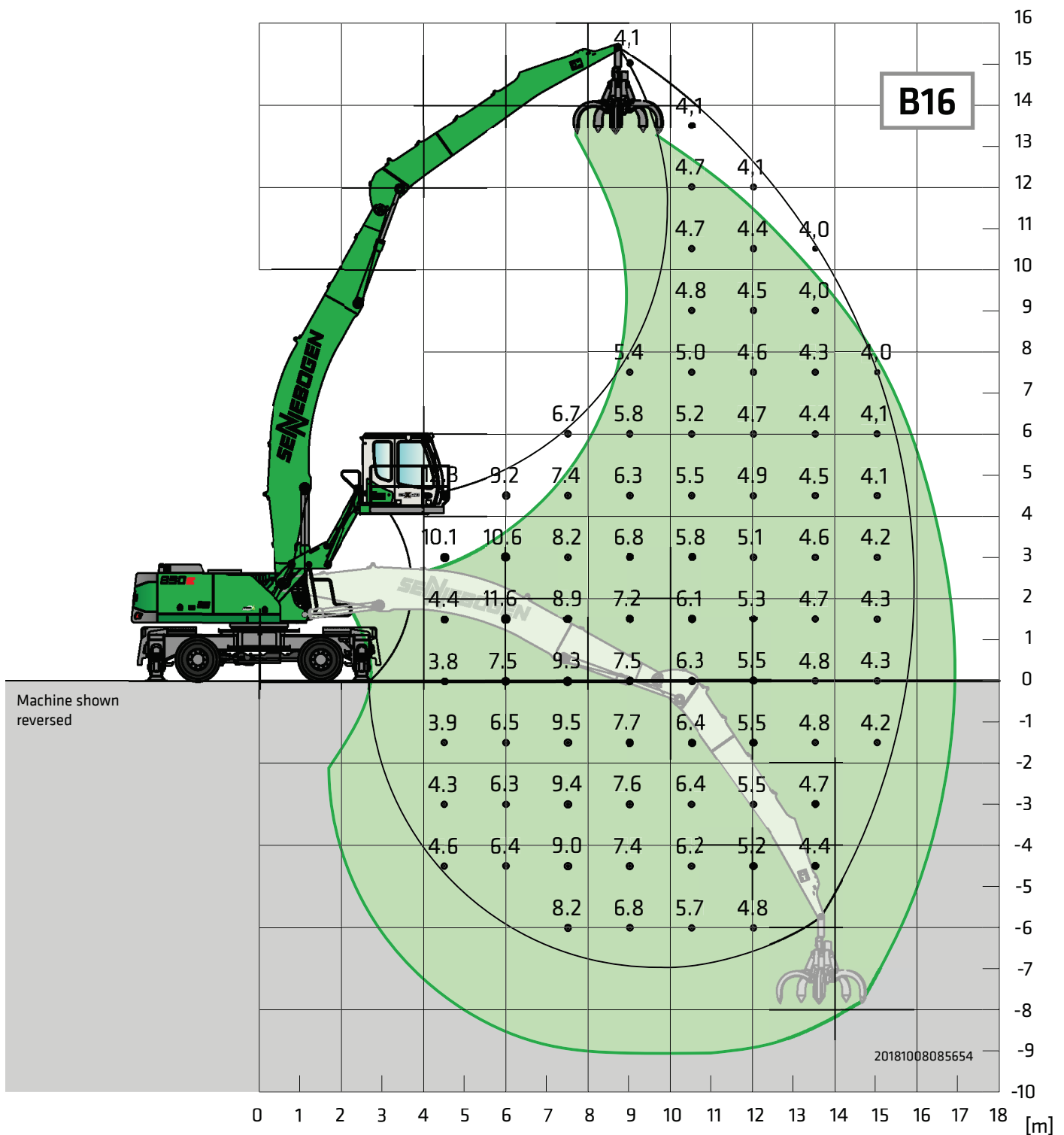
# 830E Load ratings



<b>Undercarriage</b>	<b>MP30</b>	<b>Compact boom</b>	<b>9.8 m</b>	<b>Cab</b>	<b>Maxcab E270,</b>
		<b>Grab stick</b>	<b>7.5 m</b>		<b>hydraulically elevating</b>

All load ratings are specified in tons (t) and apply at the end of the stick, without attachment, on a solid, level substrate. Attachments, such as grapple, magnet, load hook, etc. are part of the specified load ratings. The specified values are 75 % of the static tipping load or 87 % of the hydraulic lifting force in accordance with ISO 10567. In accordance with the EU standard EN 474-5, material loaders in hoist operation must be equipped with pipe fracture safety devices on hoist cylinders and an overload warning device. The specified load ratings apply 360° on the crawler undercarriage; telescopic undercarriages must be completely extended.

# 830E Load ratings

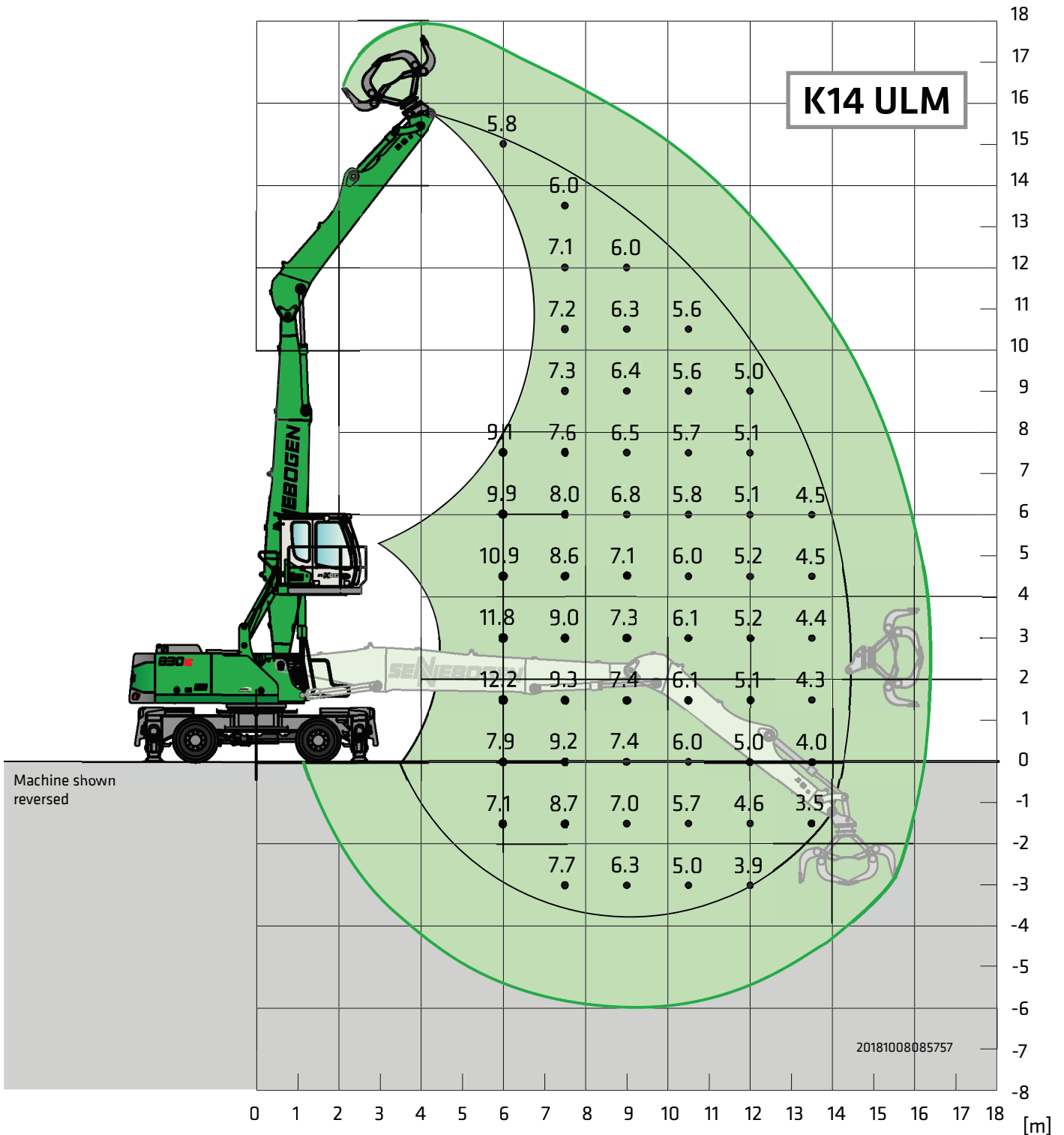


Undercarriage **MP30**      Compact boom **9.4 m Banana**      Cab **Maxcab E300/260, can be elevated and moved forward hydraulically (option)**  
 Grab stick **7.0 m**

All load ratings are specified in tons (t) and apply at the end of the stick, without attachment, on a solid, level substrate. Attachments, such as grapple, magnet, load hook, etc. are part of the specified load ratings. The specified values are 75 % of the static tipping load or 87 % of the hydraulic lifting force in accordance with ISO 10567. In accordance with the EU standard EN 474-5, material loaders in hoist operation must be equipped with pipe fracture safety devices on hoist cylinders and an overload warning device.

The specified load ratings apply 360° on the crawler undercarriage; telescopic undercarriages must be completely extended.

# 830E Load ratings



<b>Undercarriage</b> MP30	<b>Compact boom</b>	<b>8.5 m</b>	<b>Cab</b>	<b>Maxcab E270,</b>
	<b>Grab stick</b>	<b>6.0 m ULM</b>		<b>hydraulically elevating</b>

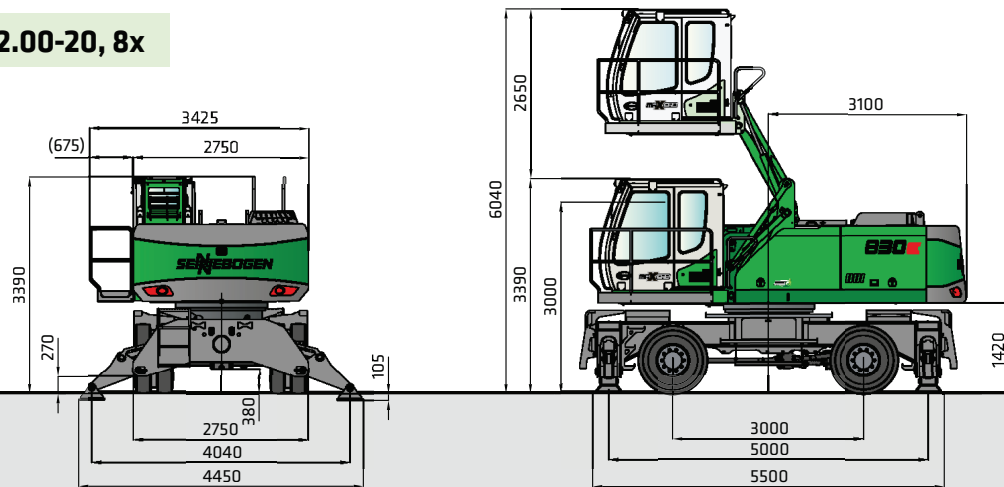
All load ratings are specified in tons (t) and apply at the end of the stick, without attachment, on a solid, level substrate. Attachments, such as grapple, magnet, load hook, etc. are part of the specified load ratings. The specified values are 75 % of the static tipping load or 87 % of the hydraulic lifting force in accordance with ISO 10567. In accordance with the EU standard EN 474-5, material loaders in hoist operation must be equipped with pipe fracture safety devices on hoist cylinders and an overload warning device.

The specified load ratings apply 360° on the crawler undercarriage; telescopic undercarriages must be completely extended.

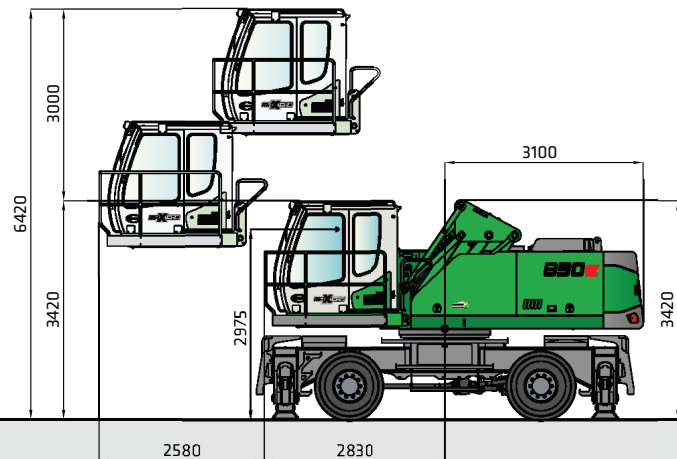
# 830E Dimensions

Transport width 2.750 mm

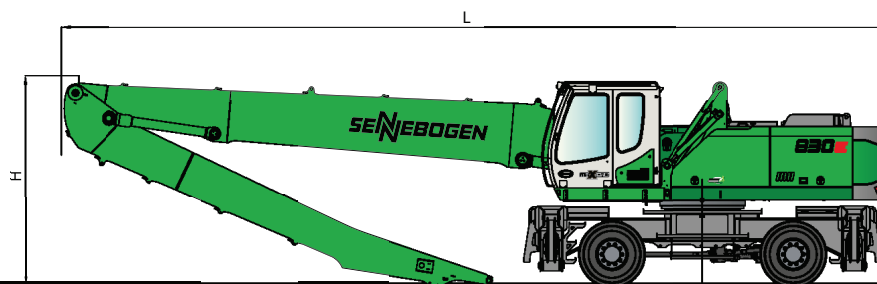
Solid-rubber tires 12.00-20, 8x



830 M with undercarriage type MP30 (series) and hydraulically elevating cab type E270



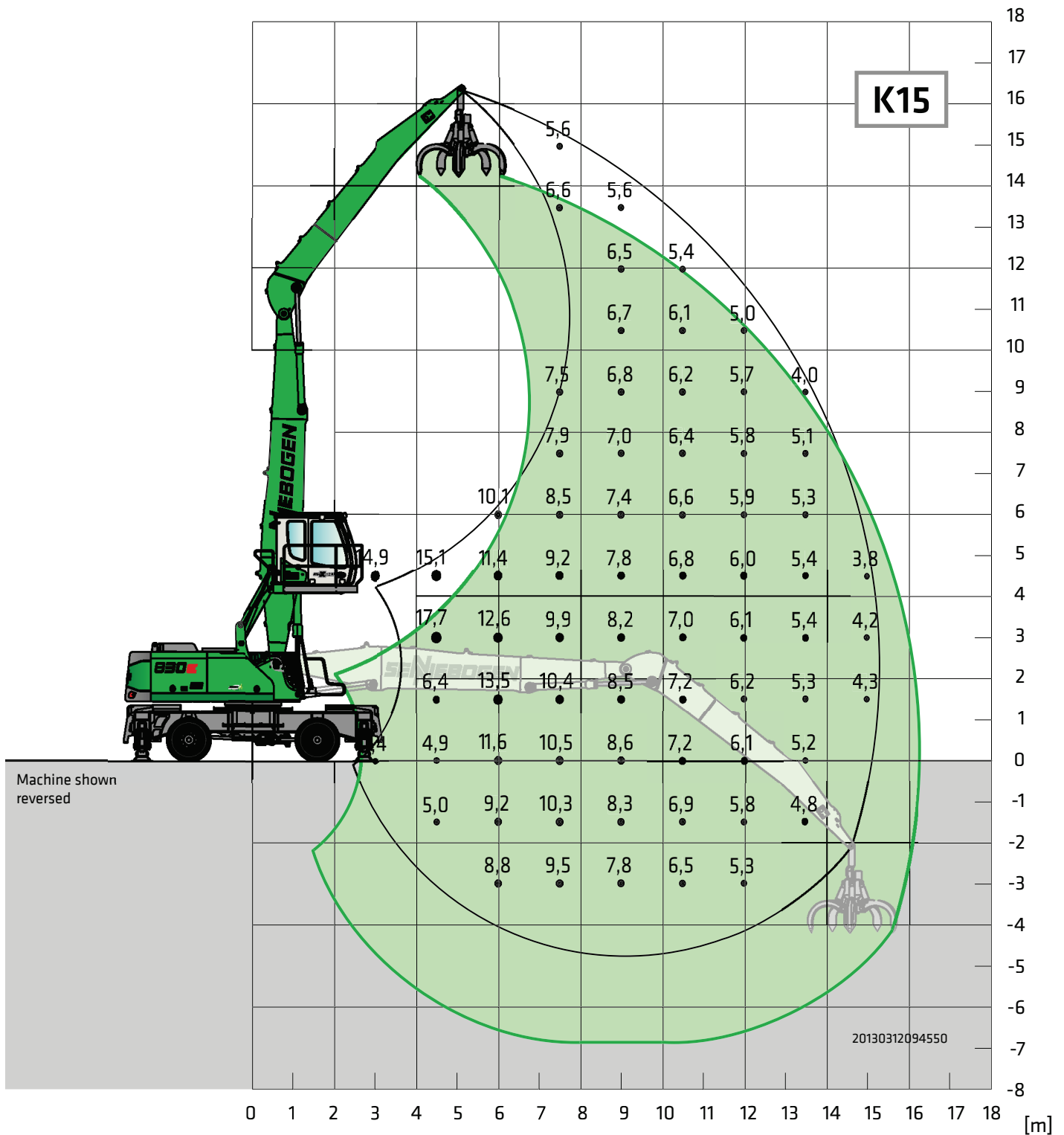
830 M with cab type E300/260 (option), can be elevated and moved forward hydraulically



830 M with undercarriage type MP30

	Load boom	Grab stick	Transport length (L)	Transport height (H)
K15	8.5 m	7.0 m	12.45 m	3.40 m
K17	9.8 m	7.5 m	13.75 m	3.45 m
B16	9.4 m Banana	7.0 m	13.40 m	3.50 m
K14 ULM	8.5 m	6.0 m	12.45 m	3.40 m





**Undercarriage MP41**

**Compact boom 8.5 m**  
**Grab stick 7.0 m**

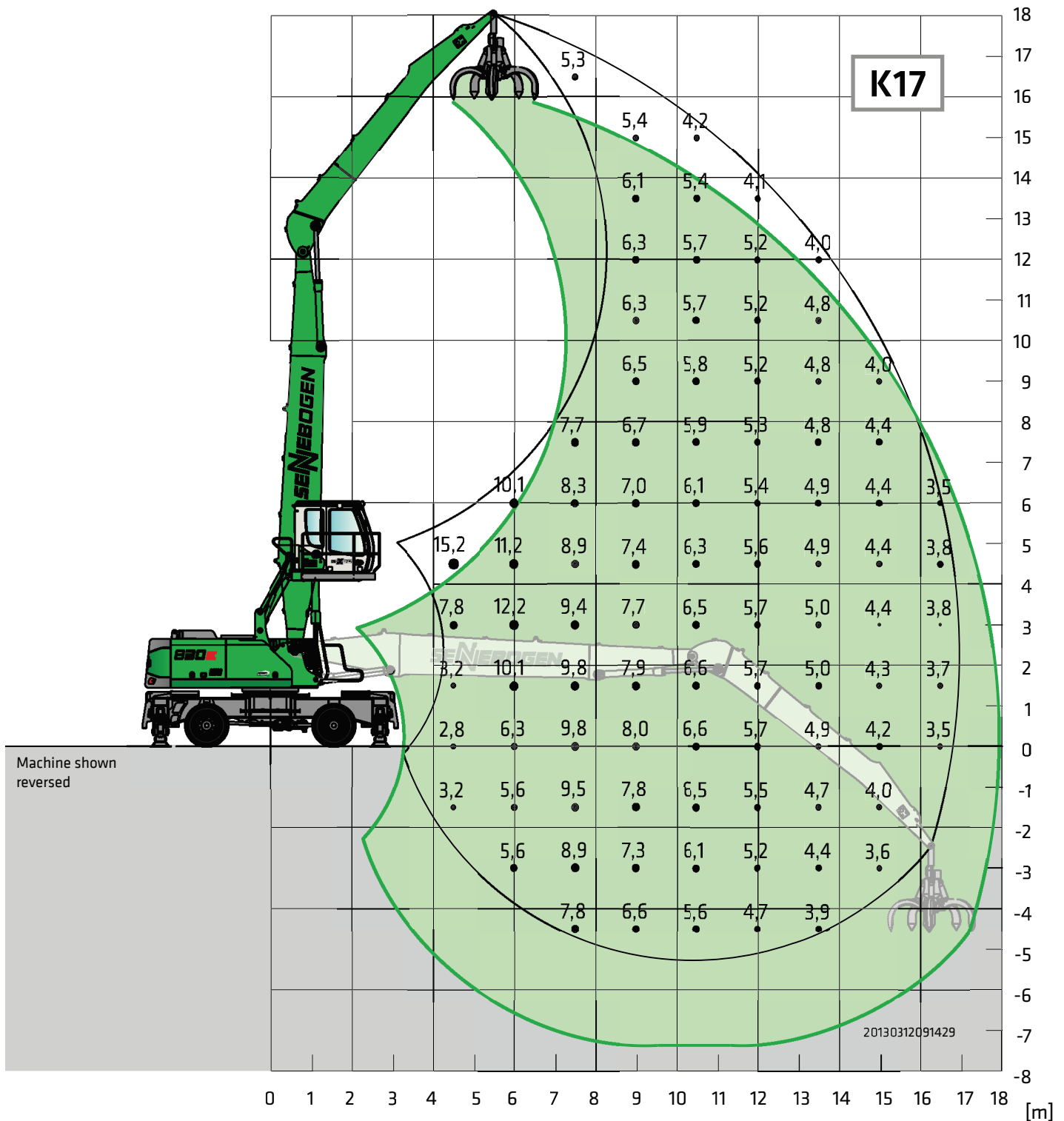
**Cab Maxcab E270,**  
**hydraulically elevating**

All load ratings are specified in tons (t) and apply at the end of the stick, without attachment, on a solid, level substrate. Attachments, such as grapple, magnet, load hook, etc. are part of the specified load ratings. The specified values are 75 % of the static tipping load or 87 % of the hydraulic lifting force in accordance with ISO 10567. In accordance with the EU standard EN 474-5, material loaders in hoist operation must be equipped with pipe fracture safety devices on hoist cylinders and an overload warning device.

The specified load ratings apply 360° on the crawler undercarriage; telescopic undercarriages must be completely extended.

# 830E Load ratings

# MHD / MHDS



Undercarriage **MP41**

Compact boom **9.8 m**  
Grab stick **7.5 m**

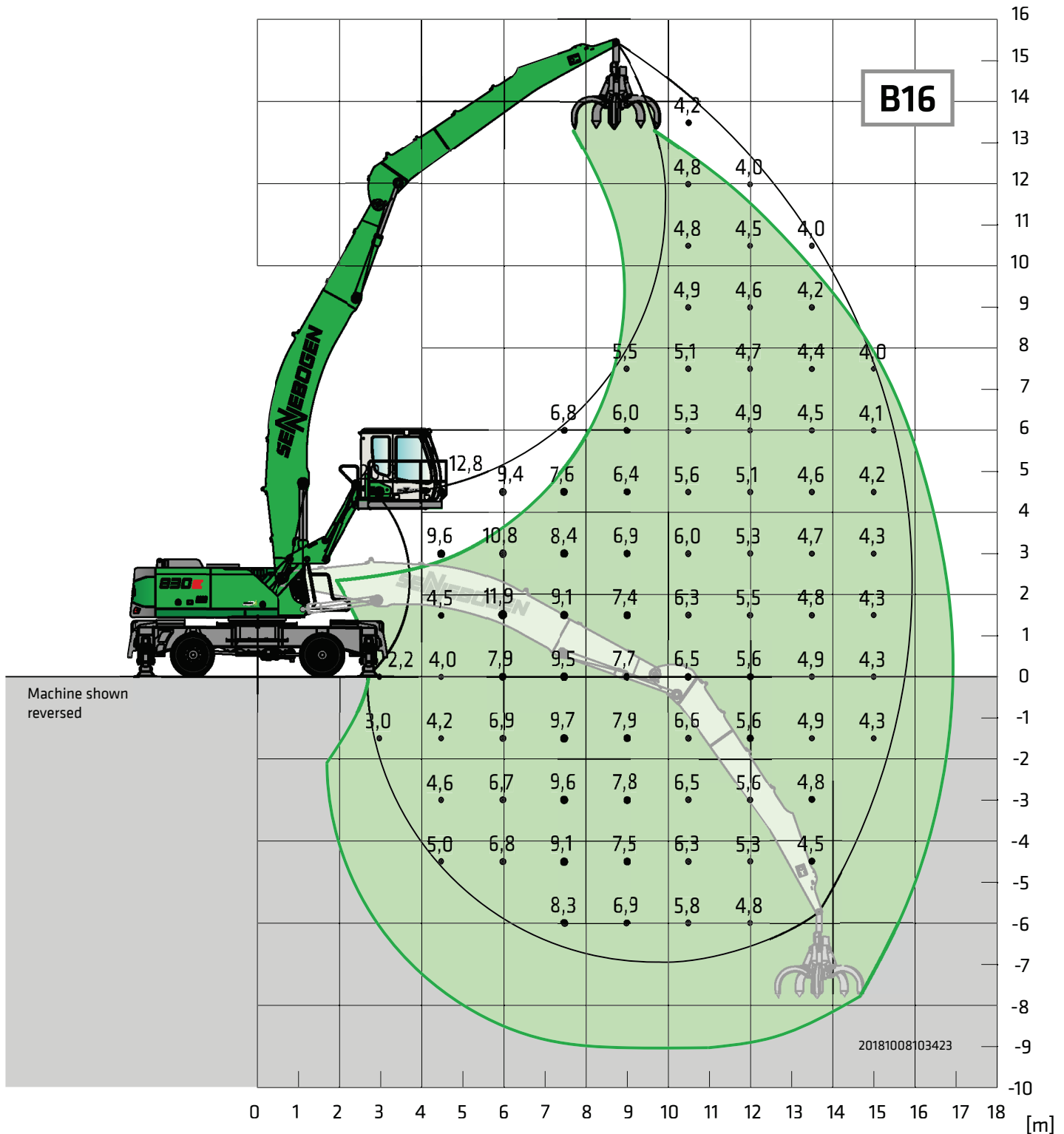
Cab **Maxcab E270, hydraulically elevating**

All load ratings are specified in tons (t) and apply at the end of the stick, without attachment, on a solid, level substrate. Attachments, such as grapple, magnet, load hook, etc. are part of the specified load ratings. The specified values are 75 % of the static tipping load or 87 % of the hydraulic lifting force in accordance with ISO 10567. In accordance with the EU standard EN 474-5, material loaders in hoist operation must be equipped with pipe fracture safety devices on hoist cylinders and an overload warning device.

The specified load ratings apply 360° on the crawler undercarriage; telescopic undercarriages must be completely extended.

# 830E Load ratings

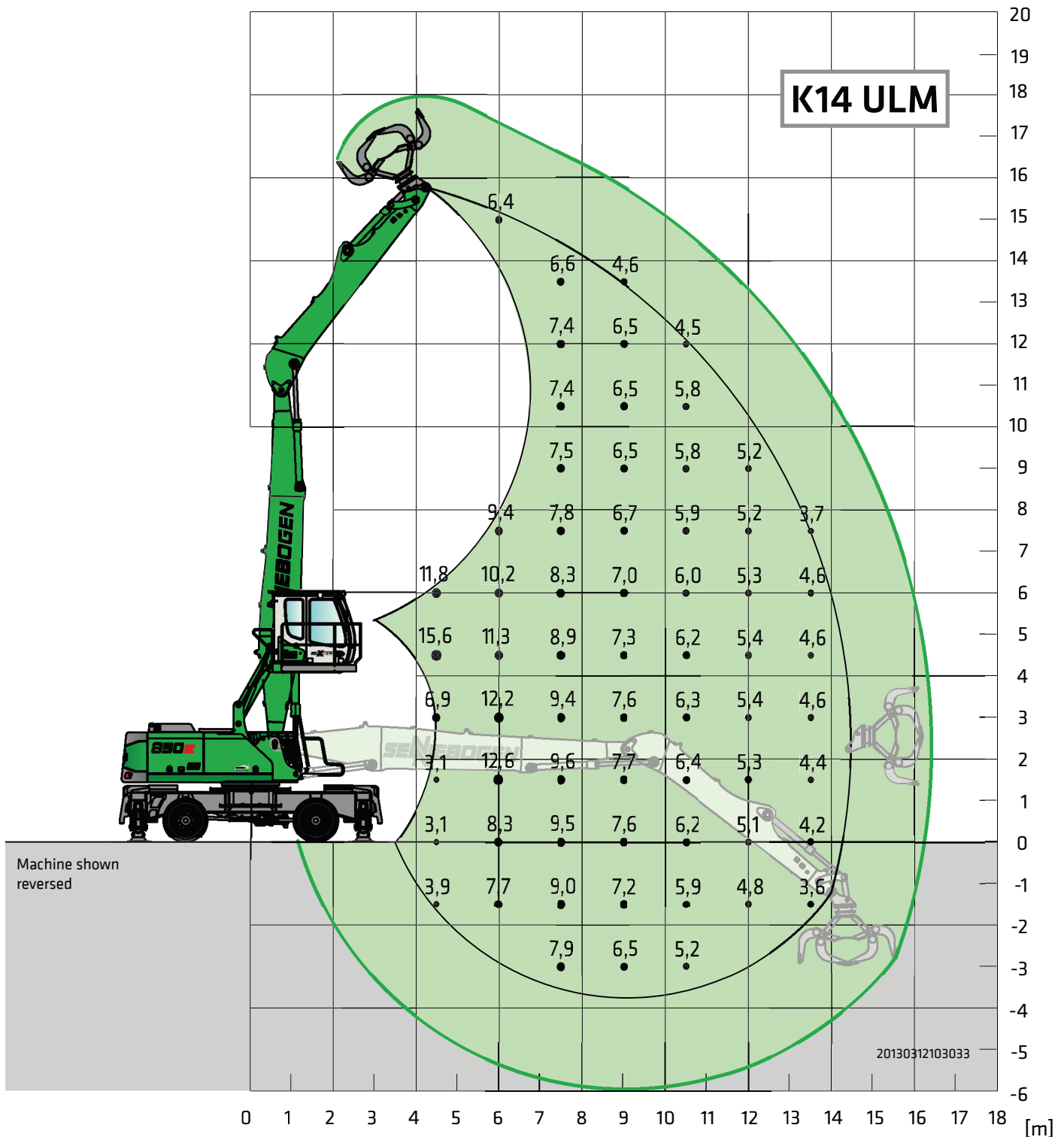
# MHD / MHDS



**Undercarriage MP41    Compact boom 9.4 m Banana    Cab Maxcab E300/260, can be elevated and moved forward hydraulically (option)**  
**Grab stick    7.0 m**

All load ratings are specified in tons (t) and apply at the end of the stick, without attachment, on a solid, level substrate. Attachments, such as grapple, magnet, load hook, etc. are part of the specified load ratings. The specified values are 75 % of the static tipping load or 87 % of the hydraulic lifting force in accordance with ISO 10567. In accordance with the EU standard EN 474-5, material loaders in hoist operation must be equipped with pipe fracture safety devices on hoist cylinders and an overload warning device.

The specified load ratings apply 360° on the crawler undercarriage; telescopic undercarriages must be completely extended.



Undercarriage **MP41**

Compact boom **8.5 m**  
Grab stick **6.0 m ULM**

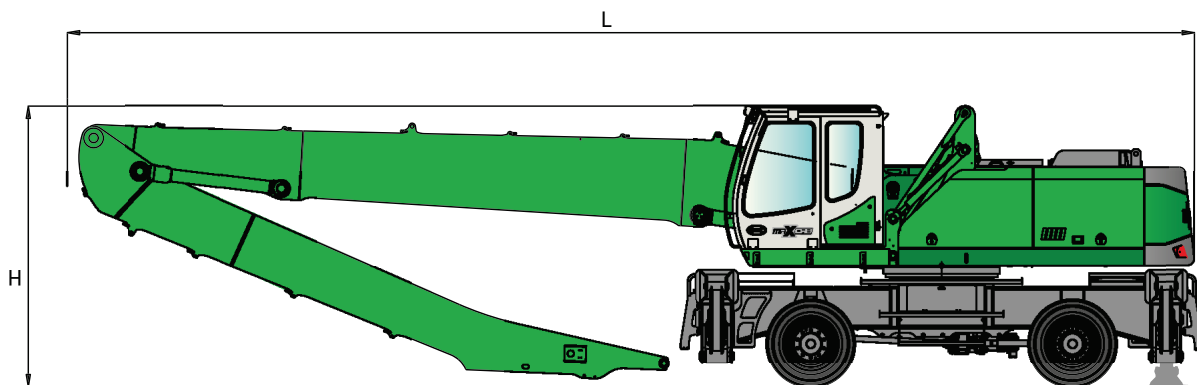
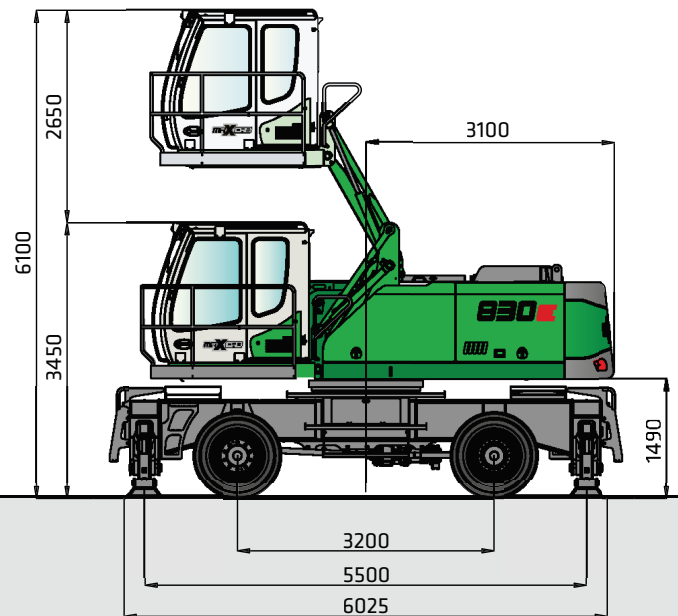
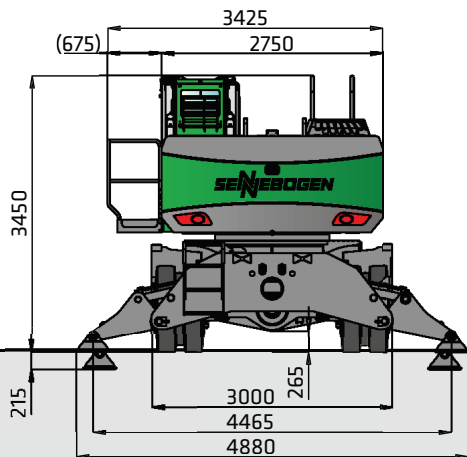
Cab **Maxcab E270, hydraulically elevating**

All load ratings are specified in tons (t) and apply at the end of the stick, without attachment, on a solid, level substrate. Attachments, such as grapple, magnet, load hook, etc. are part of the specified load ratings. The specified values are 75 % of the static tipping load or 87 % of the hydraulic lifting force in accordance with ISO 10567. In accordance with the EU standard EN 474-5, material loaders in hoist operation must be equipped with pipe fracture safety devices on hoist cylinders and an overload warning device.

The specified load ratings apply 360° on the crawler undercarriage; telescopic undercarriages must be completely extended.

Transport width 3,000 mm

Solid-rubber tires 12.00-20, 8x

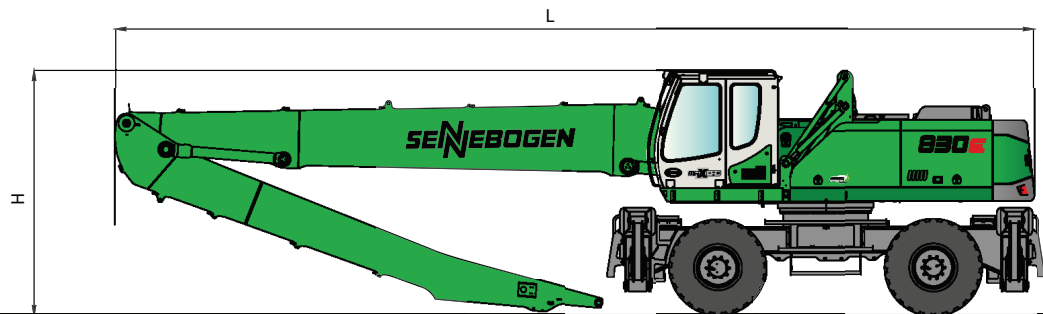
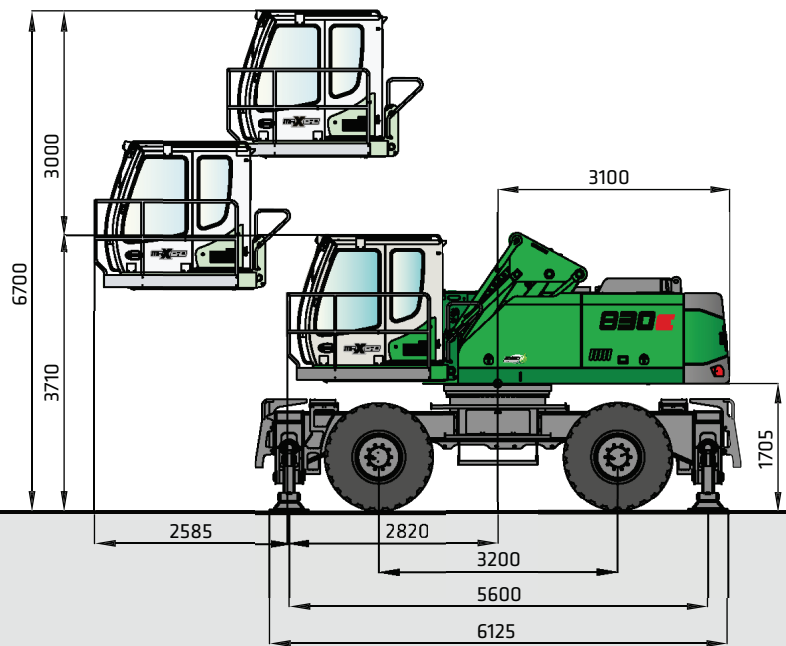
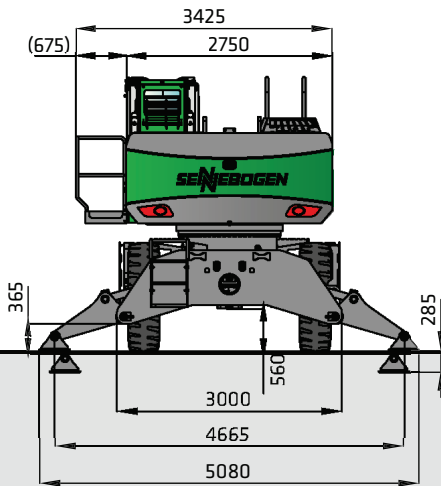


830 MHD with undercarriage type MP41, hydraulically elevating Maxcab type E270, tires 12.00 - 20, 8x, transport width 3,000 mm, working weight with boom K17, 600 l orange peel grab, approx. 40,000 kg

	Load boom	Grab stick	Transport length (L)	Transport height (H)
<b>K15</b>	8.5 m	7.0 m	12.5 m	3.45 m
<b>K17</b>	9.8 m	7.5 m	13.8 m	3.45 m
<b>B16</b>	9.4 m	7.0 m	13.4 m	3.5 m
<b>K14 ULM</b>	8.5 m	6.0 m	12.5 m	3.45 m

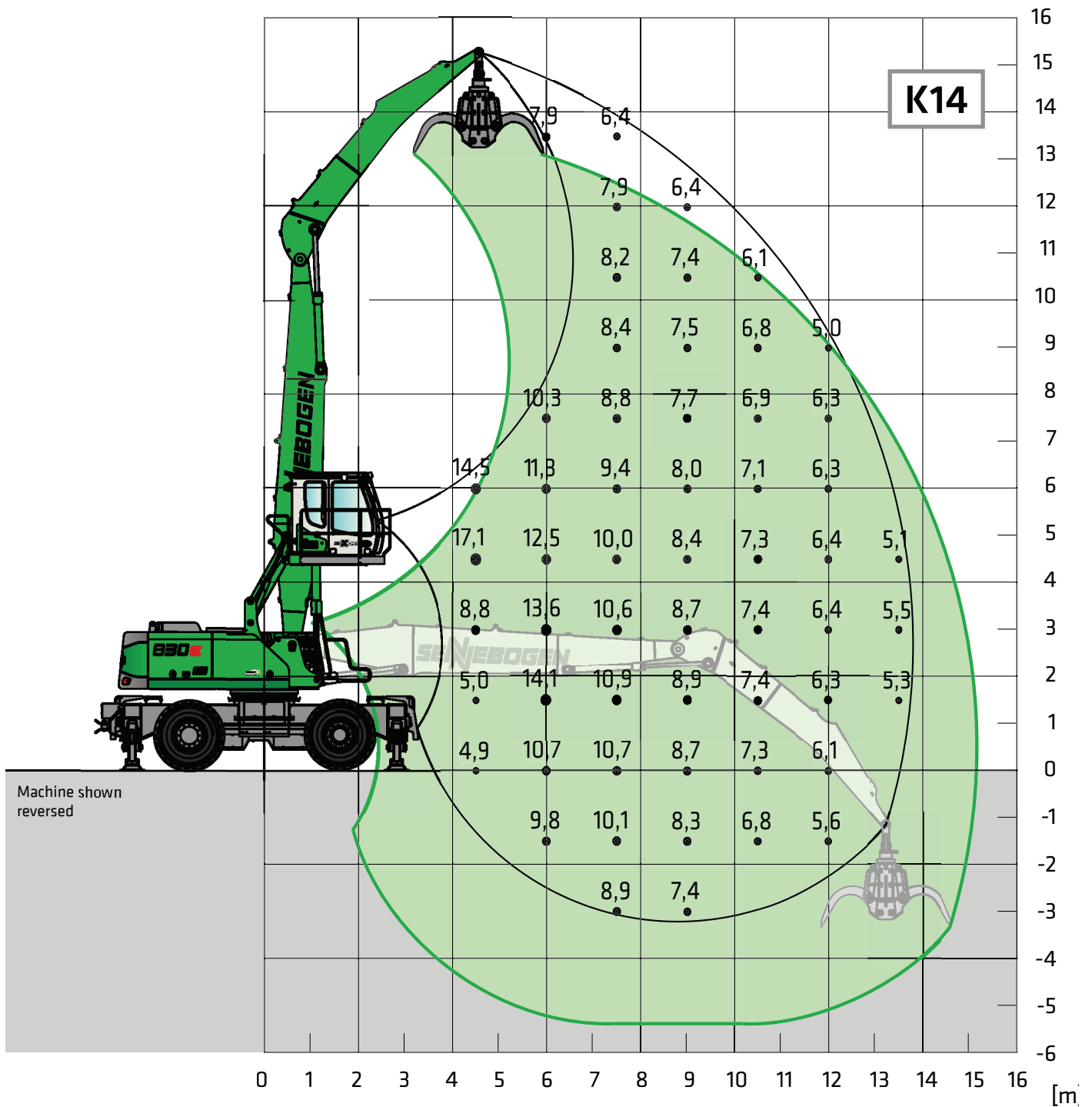
Transport width 3,000 mm

Solid-rubber tires 16.00-25, 8x



830 MHDS with undercarriage type MP34, Maxcab can be elevated hydraulically, tires 16.00 - 25, 4x, transport width 3000 mm, working weight with boom K17, 600 l orange peel grab, approx. 41,000 kg

	Load boom	Grab stick	Transport length (L)	Transport height (H)
<b>K15</b>	8.5 m	7.0 m	12.5 m	3.7 m
<b>K17</b>	9.8 m	7.5 m	13.8 m	3.7 m
<b>B16</b>	9.4 m	7.0 m	13.4 m	3.8 m
<b>K14 ULM</b>	8.5 m	6.0 m	12.5 m	3.7 m

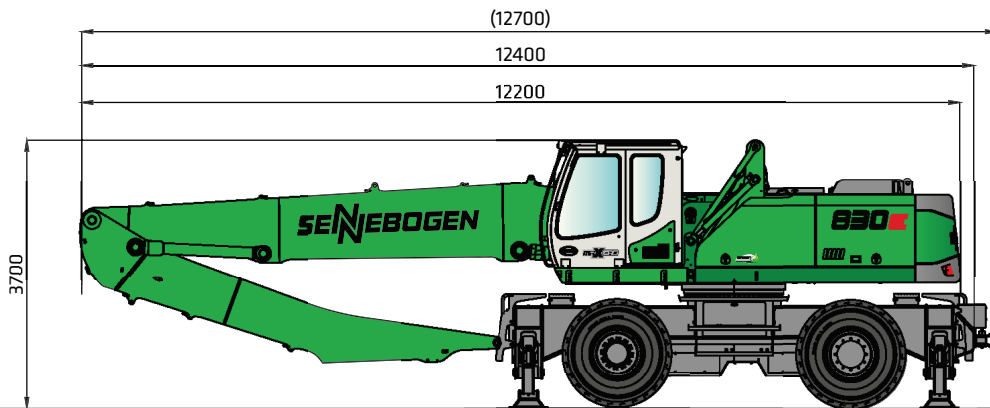
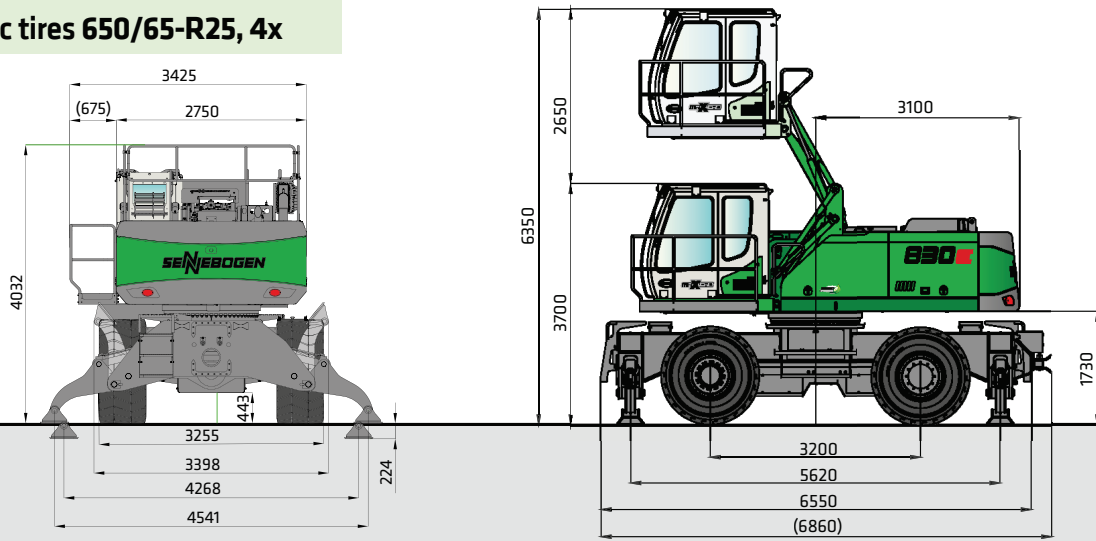


<b>Undercarriage</b>	<b>MP38</b>	<b>Compact boom</b>	<b>8.2 m</b>	<b>Cab</b>	<b>Maxcab E270,</b>
		<b>Grab stick</b>	<b>5.8 m</b>		<b>hydraulically elevating</b>

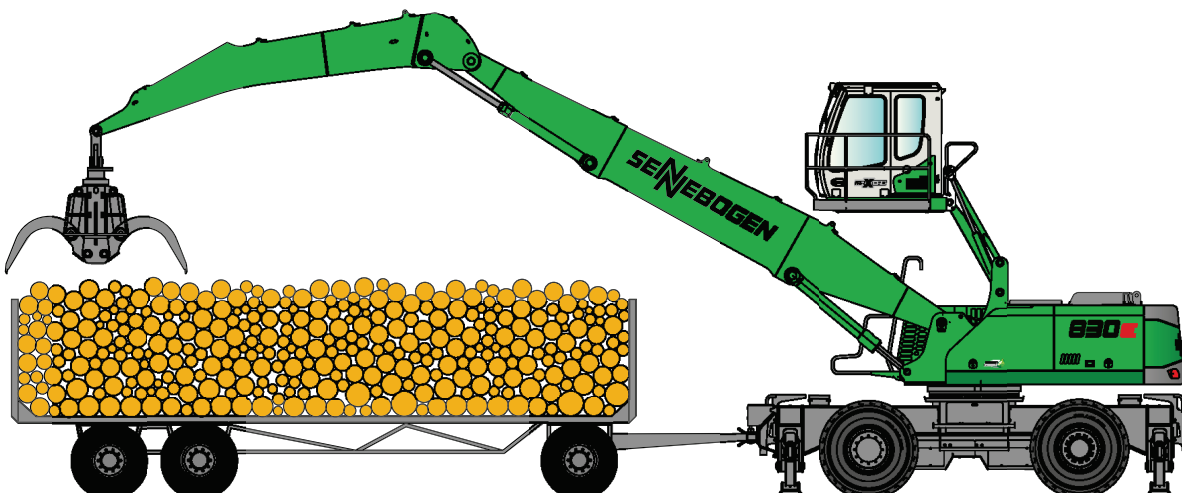
All load ratings are specified in tons (t) and apply at the end of the stick, without attachment, on a solid, level substrate. Attachments, such as grapple, magnet, load hook, etc. are part of the specified load ratings. The specified values are 75 % of the static tipping load or 87 % of the hydraulic lifting force in accordance with ISO 10567. In accordance with the EU standard EN 474-5, material loaders in hoist operation must be equipped with pipe fracture safety devices on hoist cylinders and an overload warning device. The specified load ratings apply 360° on the crawler undercarriage; telescopic undercarriages must be completely extended.

Transport width 3,400 mm, extremely high pulling force for pulling heavy trailers

Pneumatic tires 650/65-R25, 4x

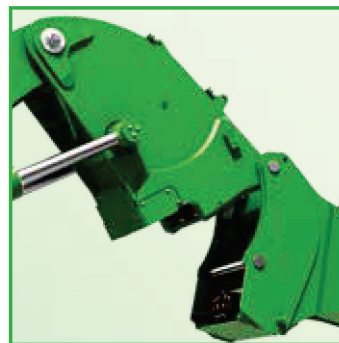
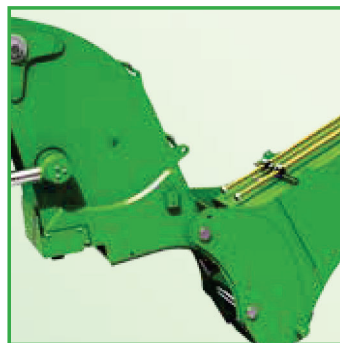
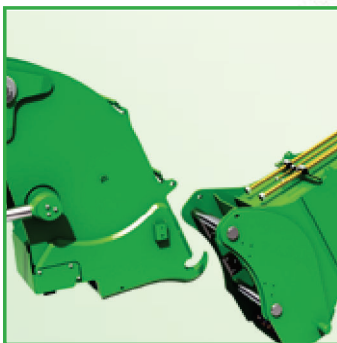


830 trailer, operating weight with boom K14, 1.5 sqm log grab, approx. 43,500 kg



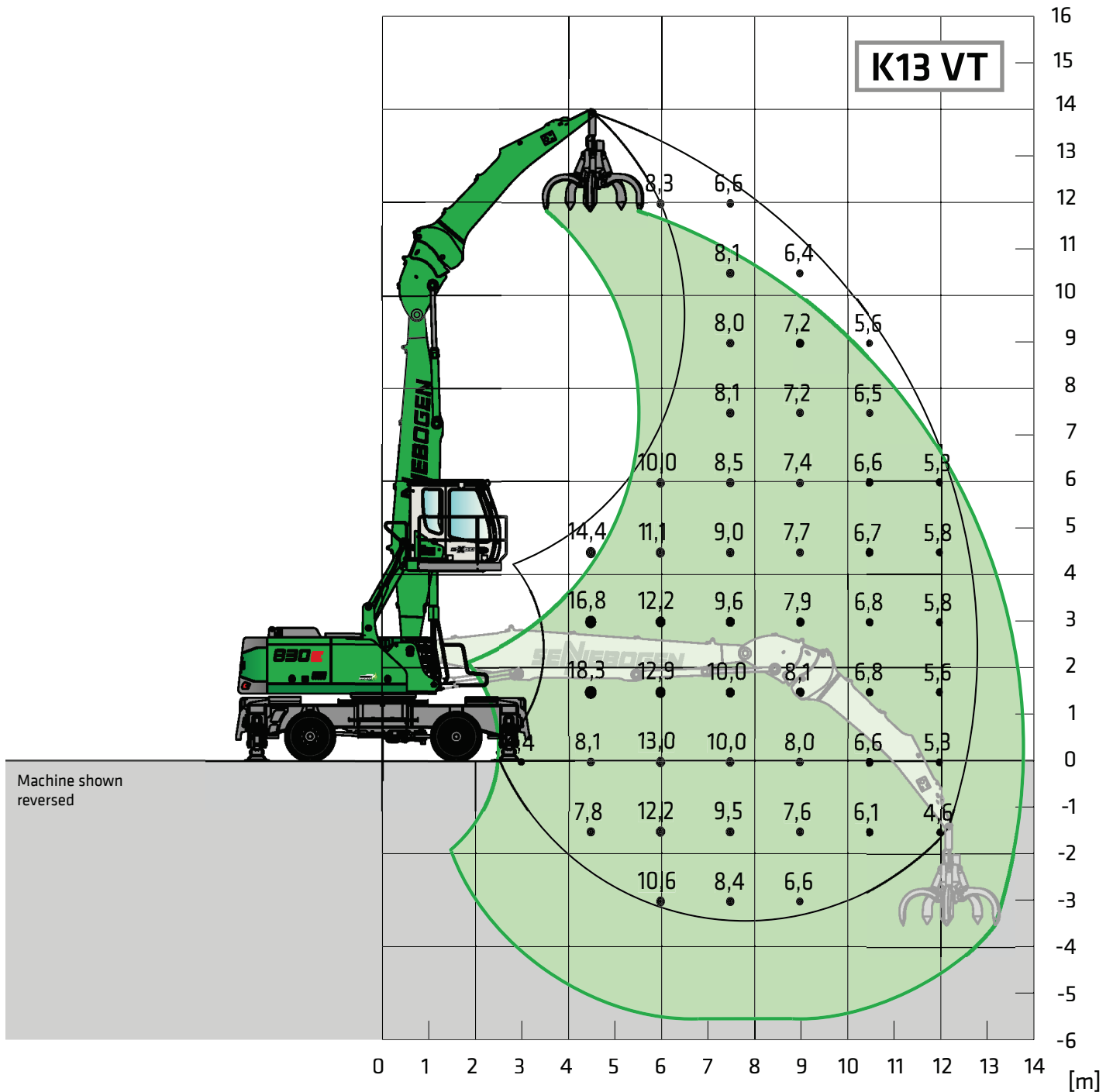


From a high-performance handling machine to a multi-functional high-performance tool carrier



- Stick / shear can be supported without support frame
- Automatic valve protection in coupled and decoupled state
- Effective change of the attachment: simple - fast - reliable
- Full power with:
  - Orange peel grab
  - Shear
  - Magnet
  - Sorting grab
- Fast and reliable changing of the attachment in seconds from the driver seat

- One basic system for different attachments
- Robust and intelligently simple
- Locking and changing the attachments without exiting
- Maximum versatility
- The material handling machine as a tool carrier
- The "VarioTool" quick changing system for material handling changes attachments fast and reliably



**Undercarriage MP41**

**Compact boom  
Grab stick**

**7.2 m  
5.7 m**

**Cab**

**Maxcab E270,  
hydraulically elevating**

All load ratings are specified in tons (t) and apply at the end of the stick, without attachment, on a solid, level substrate. Attachments, such as grapple, magnet, load hook, etc. are part of the specified load ratings. The specified values are 75 % of the static tipping load or 87 % of the hydraulic lifting force in accordance with ISO 10567. In accordance with the EU standard EN 474-5, material loaders in hoist operation must be equipped with pipe fracture safety devices on hoist cylinders and an overload warning device.

The specified load ratings apply 360° on the crawler undercarriage; telescopic undercarriages must be completely extended.

# 830E Recommended grapples

## Orange peel grab SGM (4 shells)



Design / size	Grapple capacity	Weight <sup>1</sup>		Maximum piled density
		Shell form		
		HO	G	
SGM	l	kg	kg	t / m <sup>3</sup>
400.40-4	400	1570	1720	2.0
600.40-4	600	1600	1790	
800.40-4	800	1685	1930	
1000.40-4	1000	1755	2085	
1250.40-4	1250	1850	2200	

## Orange peel grab SGM (5 shells)



Design / size	Grapple capacity	Weight <sup>1</sup>		Maximum piled density
		Shell shape <sup>2</sup>		
		HO	G	
SGM	l	kg	kg	t / m <sup>3</sup>
400.40	400	1820	1920	2.0
600.40	600	1910	2035	
800.40	800	1960	2140	
1000.40	1000	2040	2290	
1250.40	1250	2180	2415	
1400.40	1400	2250	2500	

## SGZ clamshell grab



Design / size	Grapple capacity	Weight <sup>1</sup>	Maximum piled density
SGZ	l	kg	t / m <sup>3</sup>
1000.40	1000	1270	2.0
1200.40	1200	1360	
1400.40	1400	1420	
1600.40	1600	1530	2.6
1500.50	1500	1950	
2000.50	2000	2200	2.0
2500.50	2500	2300	
3000.50	3000	2490	1.6
4000.50	4000	2880	1.0
3000.50 L	3000	2140	
3500.50 L	3500	2260	
4000.50 L	4000	2480	0.8
4500.50 L	4500	2600	
1500.50 HD	1500	2240	3.5
2000.50 HD	2000	2535	

## Magnetic plates



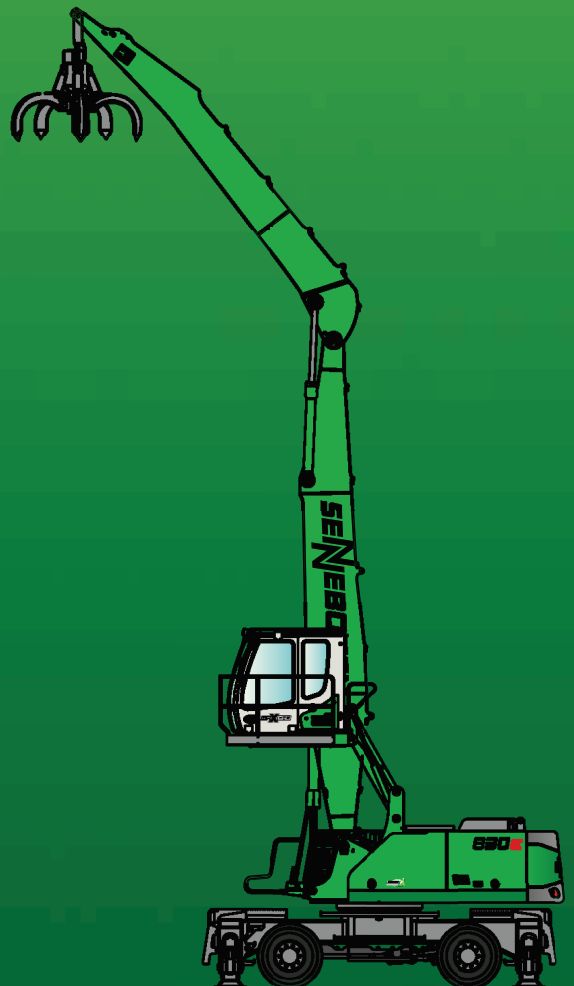
Type series / model	Power	Weight	Breakaway force	Load-bearing capacity in kg
WOKO	kW	kg	kN	Slab (safety factor 2)
S-RSL 13	10.5	1300	260	13000
S-RSL 15	12.2	1950	360	18000
S-RLB 12.5	8.8	1310	280	14000
S-RLB 13.5	10.0	1700	300	15000
S-RLB 15	11.7	2400	380	19000
<b>Recommended magnetic generator: 15 kW/20 kW</b>				

<sup>\*)</sup> Available upon request <sup>1)</sup> Weight information without grapple suspension, stick bolts, hose system

<sup>2)</sup> Half-open shells: shell sheet steel width 400 mm, 500 mm for 1250 l capacity and higher

# 830E

## MIMHO | MHDS | TRAILER



This catalog describes machine models, scopes of equipment of individual models, and configuration options (standard equipment and optional equipment) of the machines delivered by SENNEBOGEN Maschinenfabrik. Machine illustrations can contain optional equipment and supplemental equipment. Actual equipment may vary in a tolerance range depending on the country to which the machines are delivered, especially in regard to standard and optional equipment

All product designations used may be trademarks of SENNEBOGEN Maschinenfabrik GmbH or other supplying companies, and any use by third parties for their own purposes may violate the rights of the owners.

Please contact your local SENNEBOGEN sales partner for information concerning the equipment variants offered. Requested performance characteristics are only binding if they are expressly stipulated upon conclusion of the contract. Delivery options and technical features are subject to change. Errors and omissions excepted. Equipment is subject to change, and rights of advancement are reserved.

© SENNEBOGEN Maschinenfabrik GmbH, Straubing/Germany. Reproduction in whole or in part only with written consent of SENNEBOGEN Maschinenfabrik GmbH, Straubing, Germany.

### SENNEBOGEN

**SENNEBOGEN**  
**Maschinenfabrik GmbH**  
Sennebogenstrasse 10  
94315 Straubing, Germany

Tel. +49 9421 540-144/146  
[marketing@sennebogen.de](mailto:marketing@sennebogen.de)

Order no. / Item no. 179552  
830M-E-121515-101615-011910-0719d

GO FOR GREEN

 [www.sennebogen.com](http://www.sennebogen.com)