

7R SERIES



Efficient. Strong. Quiet.



GIVING YOU WHAT MATTERS MOST

Breathtaking performance, the best cab in its class, optimum comfort, low cost of operation and maximum uptime. These are the things that you tell us matter most. And they are all embodied in the latest John Deere 7R Series tractors.



Table of Content

Introduction	2
Overview	4
Tractor Efficiency	6
Engines	8
Transmission	10
More Traction, ILS and Tyres	12
Ballasting	14
CommandView III Cab	16
Intuitive Controls	18
Driving Comfort (TLS, HCS, ACS)	20
LED Lighting	22
PTO, Hydraulics and Hitches	24
StarFire 6000	26
Advanced Guidance and Precision Farming Solution	28
Manure Sensing	29
Telematics, MyJohnDeere.com and Connectivity Inside	30
Parts and Service	32
Non-agricultural Applications	34
Specifications	36
Editions & Connectivity Packages	40



Precision agriculture

The StarFire 6000 receiver comes with an improved signal range. The all-new SF3 signal features in-season repeatability at +/- 3 cm accuracy.

Connectivity Inside

Always be connected to your machine to do more and spend less. Your dealer will ensure uptime of your machine and can provide remote support

360° illumination

22 LED lights providing optimum visibility.

1

2

Power to do more

High power density coupled with a high horsepower rating (up to 352 max engine hp with IPM) gives you speed and efficiency. Extensive hitch and PTO options also make the 7R Series tractors extremely versatile.

Model	Rated Engine Horsepower (97/68EC)	Max. Engine Horsepower with IPM (97/68 EC)	Engine Type	Transmission Options: 1 e23 2 AutoPower 3 CommandQuad
7210R	210	249	6.8 l PVS	1 / 2 / 3
7230R	230	269	6.8 l PSS	1 / 2 / 3
7250R	250	290	6.8 l PSS	1 / 2
7270R	270	305	6.8 l PSS	1 / 2
7290R	290	332	9.0 l PSS	1 / 2
7310R	310	352	9.0 l PSS	1 / 2



6

Strong hydraulics

Up to six rear SCV's and up to two independent front SCVs plus 85 l oil take-out capacity.

7

What's your driving style?

Fully mechanical or infinitely variable transmissions, with a range of driving modes, give you the power of choice.

8

Engine performance

The 6.8 l and 9.0 l engines give you fantastic pulling power at reduced operating costs.

Ride & drive quality

TLS front axle suspension plus ActiveSeat or cab suspension and, on top of that, ActiveCommand Steering ensure a smooth ride.

Easy to use:

Generation 4 CommandCenter with 10 inch touchscreen.

Comfort

Quietest cab in the industry with 68 dB(A).



Low running costs

Lifetime DPF and long service intervals.

Unrivalled fluid efficiency

In DLG PowerMix* and Transport tests the 7310R recorded the lowest ever total fluid consumption.

Power to the ground

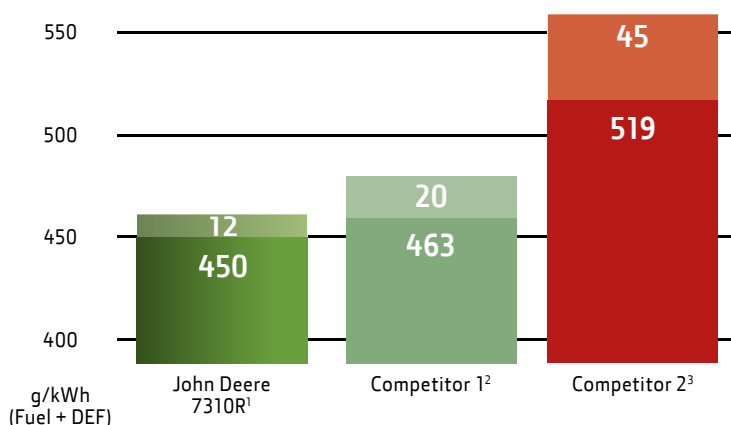
The 2.15 m tyres provide excellent power transfer with a perfect weight split of 45:55.

OUTSTANDING TRACTOR EFFICIENCY

How much power does a tractor actually deliver? Engine specification in the market can be deceiving. What matters is the power that can be transmitted to the ground and to the PTO.



7310R DLG POWERMIX TRANSPORT



¹ DLG Powermix test Nr.: 2014-0437; 10.2014; www.dlg-test.de

² DLG Prüfbericht Nr.: 6297; 2015; www.dlg-test.de

³ DLG Powermix test Nr.: 2015-854; 10.2015; www.dlg-test.de



The 7R delivers
up to 93% overall
tractor efficiency.

93%

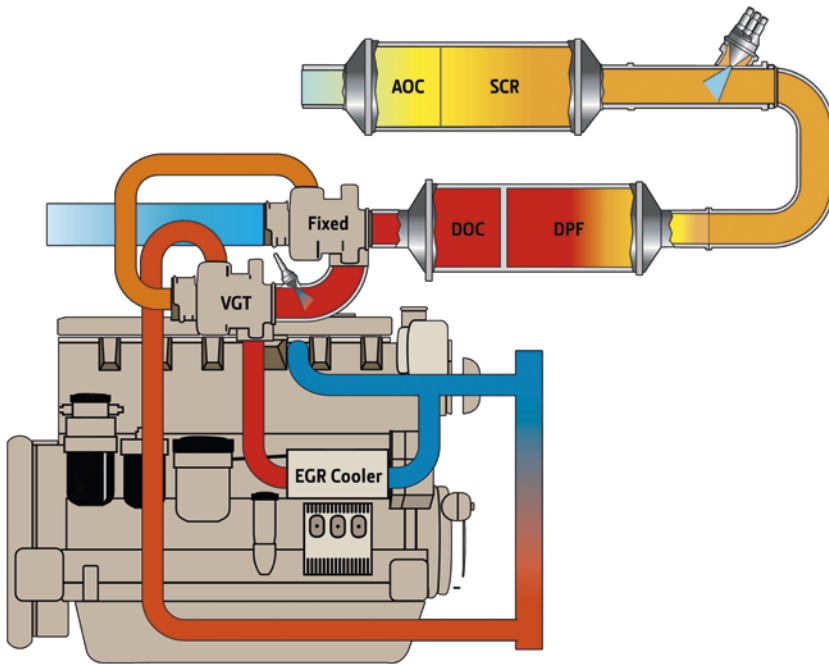
3

The superior efficiency of John Deere 7R tractors deliver up to 93% overall tractor efficiency.

The compact cooling package (1) has an excellent airflow with no restrictions. The 6.8 l and 9.0 l engines offer superior torque and fuel economy under all conditions. You can count on the high transmission (2) efficiency of e23 PowrShift and AutoPowr. And finally, the axle design and wide tyres, (3) up to group 49 (2.15 m), put more power to the ground.

POWERFUL HEART TO GET THE JOB DONE IN ANY CONDITIONS

Exceptional performance starts with an exceptional engine and to build an exceptional engine you need a clear design strategy. John Deere 7R 6.8 l and 9.0 l engines have been designed and developed to deliver more torque and better agility with series turbo technology while meeting Stage IV standards.



Catalysed exhaust filter with DOC/DPF

The diesel oxidation catalyst (DOC) and diesel particulate filter (DPF) remove particles down to 2.5 μm .

Cooled exhaust gas recirculation (EGR)

Precise amounts of cooled exhaust gases are mixed with incoming fresh air, lowering combustion temperatures to lower NO_x output while further reducing emissions.

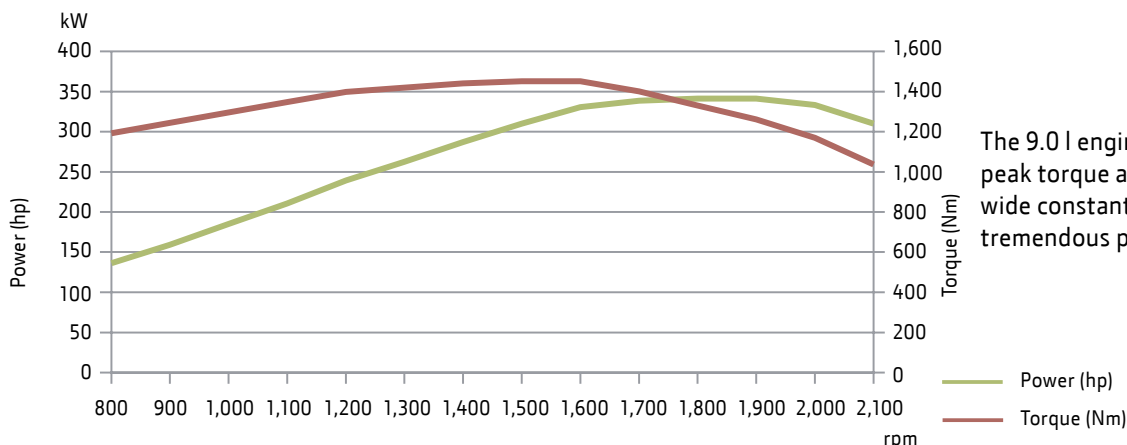
Selective catalytic reduction (SCR)

Diesel exhaust fluid mixes with engine exhaust gases in the catalyst to reduce further NO_x. The DEF consumption is just 2-3% of diesel use.

Series turbochargers

The series turbochargers deliver more low-speed torque and engine responsiveness to meet varying load requirements.

Pulling Performance due to wide constant power ranges



The 9.0 l engine of the 7310R delivers peak torque at the ideal rpm within wide constant power range to ensure tremendous pulling performance.

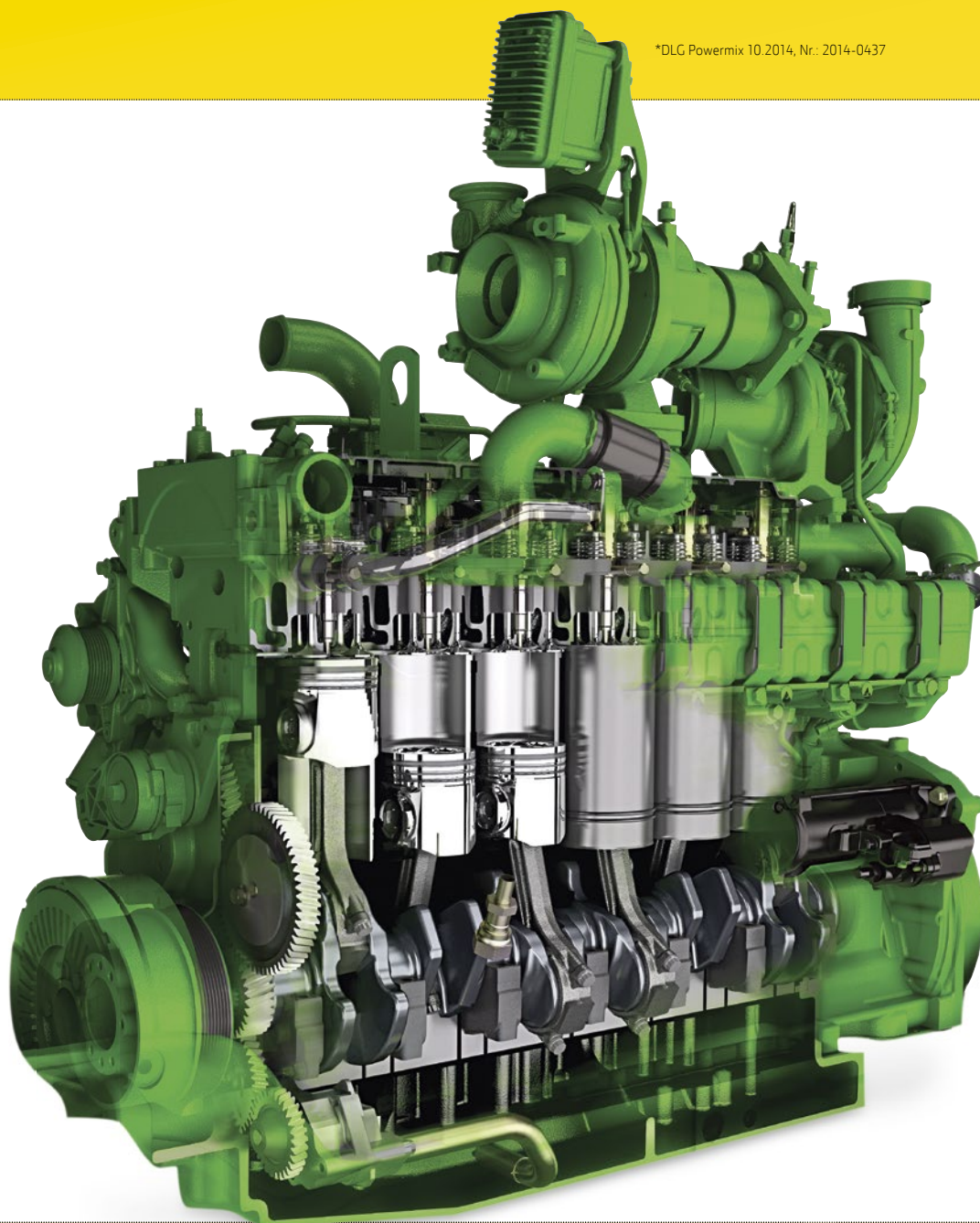
6.8 l PVS & PSS engines

The 6.8 l engine provides high performance horsepower and torque. A new cylinder head for better cooling, steel pistons and a titanium turbo charger compressor wheel ensure increased uptime.

9.0 l PSS engines

The 7290R and 7310R tractors are built with John Deere 9.0 l PSS engines, which have set new benchmarks for total fluid efficiency among high horsepower Stage IV-compliant tractors in the DLG Powermix test*.

*DLG Powermix 10.2014, Nr.: 2014-0437



Air-to-air aftercooling

Air-to-air after cooling lowers the intake manifold air temperature and provides more efficient cooling for greater engine power and reliability.

Transient Engine Response

Thanks to our proven lifetime DPF, in combination with a new DEF system which has been developed by John Deere for our engines, the engine responds very quickly to changing loads.



On the road

Contractors and farmers with a high level of road transport applications will benefit from the 7R's excellent fluid efficiency at transport. Thanks to the excellent power-to-weight ratio and the fast engine response, the 7R will boost your transport business and increase your productivity.

e23 and AutoPowr transmission with AutoClutch

With the AutoClutch you can simply depress both brakes and the transmission ratios down to a stop from any ground speed without using the clutch pedal.

1

AutoPowr Four modes

There are four modes available in AutoPowr: Full Auto, Custom, Manual and Pedal mode, which enables you to control ground speed separately from the engine.

2

AutoPowr automatic response

AutoPowr lets you smoothly start-up, achieving maximum speed with absolutely no clutching. Top speed 40 km/h at 1360 rpm and 50 km/h at 1630 rpm for low transport cost.

3

The power of choice

The 7R Series tractors offer a range of transmission options to help meet the challenges of your operations: AutoPowr infinitely variable transmission, e23 PowerShift transmission and CommandQuad with Efficiency Manager.

1 – Engine input shaft

2 – Hydrostatic Module

3 – Sun and Ring Unit Input

4 – Ring Gear

5 – Pinion Gears & Carrier

6 – M2 & M3 Clutches

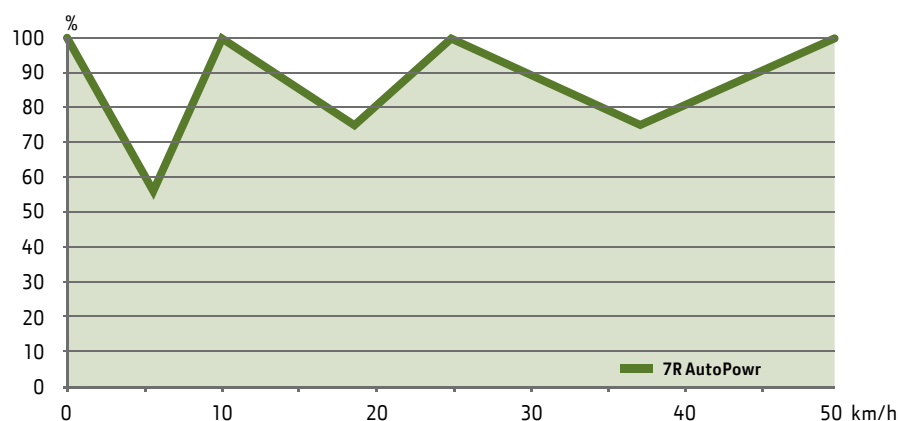
7 – Output shaft with
Mode 1, 2 & 3 Gears

8 – Pump Drive Gear

9 – Synchronizer Unit

10 – MFWD Clutch and Park Brake

Mechanical part of the power flow of 7R AutoPowr



6



AutoPowr: smooth shifting

AutoPowr lets you shift smoothly from start-up to maximum speed with a single lever and absolutely no clutching. Just select a specific speed and AutoPowr keeps it steady by automatically responding to changing load conditions.

7

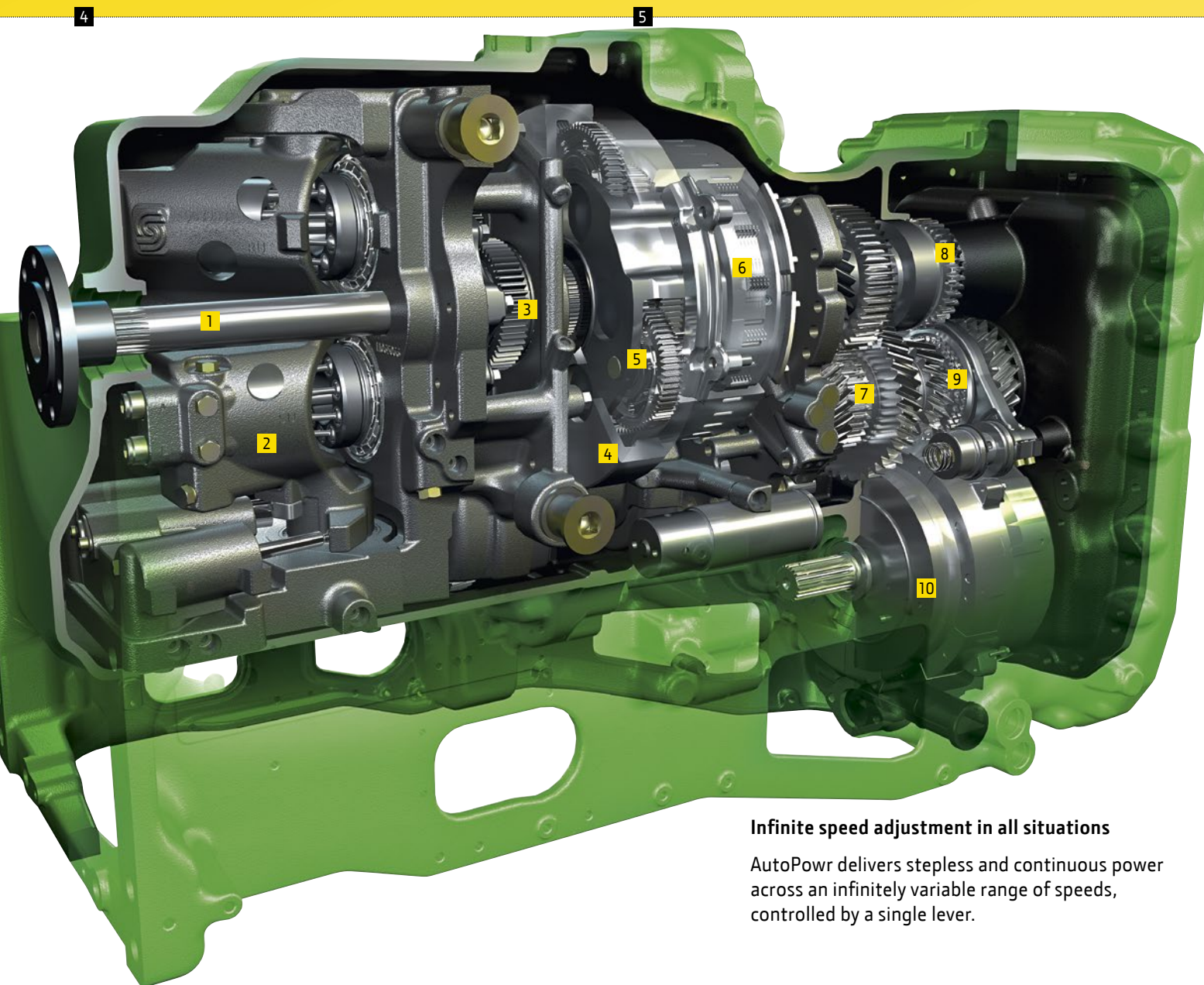


e23 transmission with Efficiency Manager

Efficiency Manager allows the operator to preset the working speed and helps to save fuel by keeping the engine rpm at an optimum speed by automatically shifting up and throttling back.

Even gear spacing of e23 transmission

The gears are evenly spaced in e23 transmission, with lots of gears in the main working range for high efficiency.



Infinite speed adjustment in all situations

AutoPowr delivers stepless and continuous power across an infinitely variable range of speeds, controlled by a single lever.

e23 transmission with AutoClutch

e23 combines all the benefits of a mechanical transmission with the ease of use of an IVT. 10 fully powershiftable gears in the main working range (5-16 km/h) for maximum pulling power on the field at the right rpm.



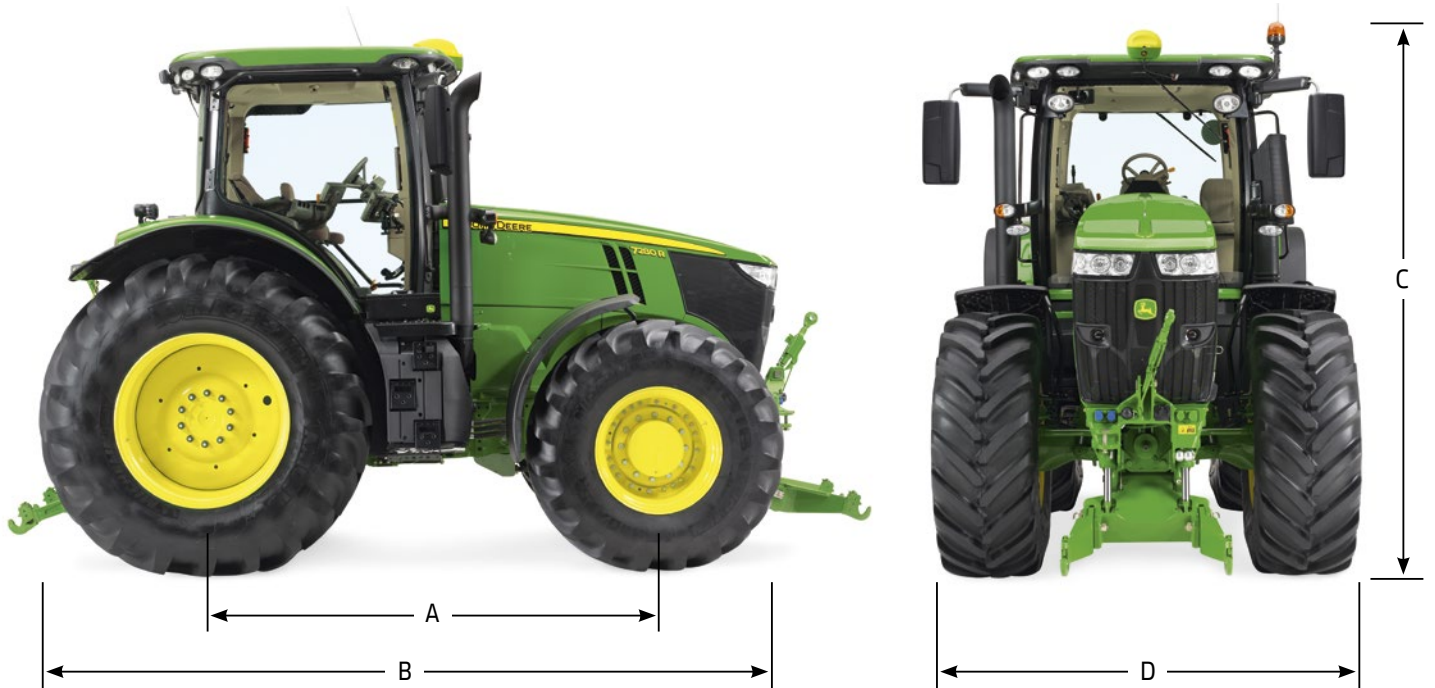
CommandQuad with Efficiency Manager (7210R and 7230R only)

Select the fully automated mode for maximum fuel efficiency or, for targeted speed application, the manual mode with five ranges and four power speeds per range. Building up on the field-proven AutoQuad Plus transmission the CommandQuad will deliver the same outstanding durability and efficiency.

FASTER TURNS, INCREASED FIELD SPEED AND MANOEUVRABILITY

The structural chassis of the 7R Series has been designed for unprecedented power density. With a robust chassis, TLS Plus front axle providing extra drawbar pull and a long wheelbase for additional pulling power and stability, John Deere 7R Series tractors deliver increased productivity with high payloads, even in tough conditions.





A: Wheelbase: 2925 mm

B: Overall length (without front weights):
5520 mm (7210R, 7230R)
5540 mm (7250R, 7290R, 7310R)

C: Total height: 3630 mm – Group 49 tyres & beacon light
3245 mm – Group 47 tyres

D: Width: 2602 mm (with 710/70R38 or 710/70R42 tyres,
tread setting of 1793 mm)



Tyres

John Deere offers a variety of tyre options for a wide range of field and transport applications. Select 2.15 m diameter rear tyres (7250R models and above) for better power transfer and higher ground clearance. You will also get sufficient traction with less ballast, reducing soil compaction.

Perfectly balanced

7R Series tractors are designed with a perfect 45:55 weight split. Wide ballasting options are available if required and can be easily installed and removed due to the self-centring guide lugs.

ADD HEAVY BALLAST – WITH A LIGHT TOUCH

The new EZ Ballast enables optimum ballasting of the tractor – especially beneficial to farmers and contractors who frequently need to switch between field and road applications. You can add or remove the 1.7 tonne weight in seconds, at the touch of a button, without needing to step down from the cab.



1.



Drive over the weight

There's no need to step down from the cab.

2.



Pick up the weight

Simply use your selected SCV and the ballast is raised to the undercarriage. A safety device will ensure unfailing locking.

BALLASTING FLEXIBILITY FOR VERY APPLICATION

With the ever-increasing cost of fuel, correct weight distribution and flexible ballasting play an increasingly important role in driving productivity and performance. John Deere 7R Series tractors offer several options to provide the optimum balance.



Pick-up weights

Pick-up weights help you get the perfect balance and improve the tractive performance of your 7R. Available in 900 kg, 1,150 kg, 1,500 kg and 1,800 kg versions, they can be mounted to the front hitch and the front weight support (900 kg, 1150 kg only).



Front suitcase weights (50 kg)

These weights can easily be mounted/dismounted to the front weight support. They support an optimised weight distribution between the rear and front axle, as the amount of weights being used can be quickly adapted to current application requirements.



Rear wheel weights

Rear wheel weights enable correct ballasting of the rear axle for improved traction. They can be mounted on the outside of wheels. With cast wheels they can also be mounted on the inside (except for 900 kg). Available with 70 kg, 205 kg, 625 kg (inner only) and the all-new 900 kg.

3.



Drive off

Releasing the ballast is just as simple and will save transport fuel costs.

EZ Ballast

- Significant time saving compared to other ballasting options
- Maximum operator safety
- Maintain the recommended weight split
- Transport higher payloads on the road
- Lower the centre of gravity
- Free front and rear hitch for other implements
- Or combine with front & rear weights for total 3.5 t ballast

ULTIMATE CONTROL

When you climb into the CommandView III cab the first thing you notice is the space you have and the premium fit and finish quality. Thanks to the laminated glass and front sound barrier, you will enjoy less noise intrusion. The sensationally low 68 dB(A) makes for a more relaxed day.

Visibility is also better than ever, especially when you rotate the seat 40 degrees for a nearly unobstructed view of your attachments. All of the key tractor functions such as the throttle, transmission speed and direction, SCVs and PTO are at your fingertips on the smartly configured CommandARM.



ActiveSeat

The ActiveSeat utilises electro-hydraulic technology in combination with air suspension. ActiveSeat isolates up to 90 percent of vertical movements and provides the operator with enhanced ride-quality far above standard air suspension seats.

- 1 – Scissor Suspension
- 2 – Air Reservoir
- 3 – Accelerometer
- 4 – ActiveSeat Actuator
- 5 – Air Compressor & Air Spring
- 6 – Lateral Shock



Wide angle mirrors

Optional wide-angle mirrors with power telescoping provide a wider field of vision. They are also heated for greater visibility even in cold or foggy conditions.



40 degree swivel seat

Visibility and comfort is better than ever, especially when you rotate the seat 40 degrees for a nearly unobstructed view of your attachments. You will feel the difference after a day of work.

Ease of use

Navigation is made easy with logical menus and a comprehensive shortcut bar. With Quick Line you can now record an AB line with just one button press.

Tailor your 7R to your needs

Choose the 4100 or 4600 CommandCenter. Choose CommandCenter AutoTrac or CommandCenter Premium activation.

ISOBUS AEF certified

The Generation 4 CommandCenter is AEF ISOBUS compliant, you can control your ISOBUS-ready implement through Universal Terminal (UT) and run automatic section control through Task Controller (TC-SC) – depending on the AEF certification level of the implement.

1

2

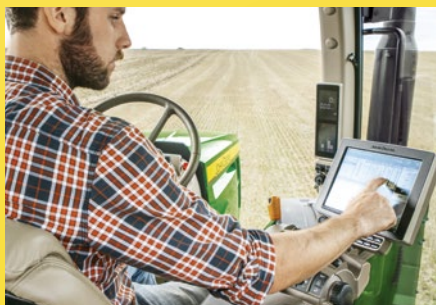
3

Controls as intuitive as a smartphone

The 7R Series makes sophisticated agricultural technology easy to operate. Everything is within easy reach on the CommandARM control stack and clearly viewable on the Generation 4 CommandCenter.

- 1 – Transmission shift lever with thumb wheel for speed adjustment
- 2 – ISOBUS shortcut button / SCV control lever lock
- 3 – Rear hitch control levers
- 4 – SCV control levers
- 5 – Set speed 1&2
- 6 – AutoTrac resume button and 4 iTEC sequence buttons
- 7 – Hand throttle, ECO-function, foot pedal lock button, FieldCruise ON/OFF button
- 8 – Differential lock & mechanical front-wheel drive (MFWD)
- 9 – Generation 4 CommandCenter
Featuring a 7 or 10 inch touchscreen, the Gen 4 CommandCenter is your state-of-the-art interface with the tractor and enables you to run field-proven AMS solutions such as AutoTrac

7



Even faster access to advanced functions

The CommandCenter functions just like a tablet with touch-screens: navigating through the options is simplified via menus, shortcuts and with context sensitive help. And you can run our field proven mainstream AMS solutions.

8

Easy SCV control

On the CommandARM, the selective control valve levers and couplers are colour-coded to simplify recognition. For convenience, all SCVs can be operated via easy to reach SCV control levers or optionally with a reconfigurable electric joystick.

Documentation made easy

The 4600 CommandCenter is connected to the Operations Center on MyJohnDeere.com through Wireless Data Transfer. You can conveniently send setup files from office to field and applied maps and totals from field to office.

Virtually in the cab

You or your John Deere dealer can remotely log on to the Generation 4 CommandCenter to assist operators with machine and ISOBUS implement setup and operation. In addition, on-screen help files enable operators to get familiar with all functions.

Field-proven AutoTrac

Fit a StarFire 6000 receiver and you're ready for hands-free steering. Choose between three accuracy levels: SF1: +/- 15 cm; SF3: +/- 3 cm delivering in-season repeatability; RTK: +/- 2.5 cm delivering long term repeatability.



Settings Manager

Reducing the set up time for all your different applications the Settings Manager enables you to save all machine settings you have made for example for the engine, SCV's and rear hitch as well as configuration settings for the electric joystick, and recall them every time you wish to use them again.

10 – Shortcut keys/buttons for fast operator access to specific functions

11 – Joystick with lock button
Joystick mode: configurable with tractor functions to operate front and rear SCVs and/or front hitch
Loader mode: operate front loader

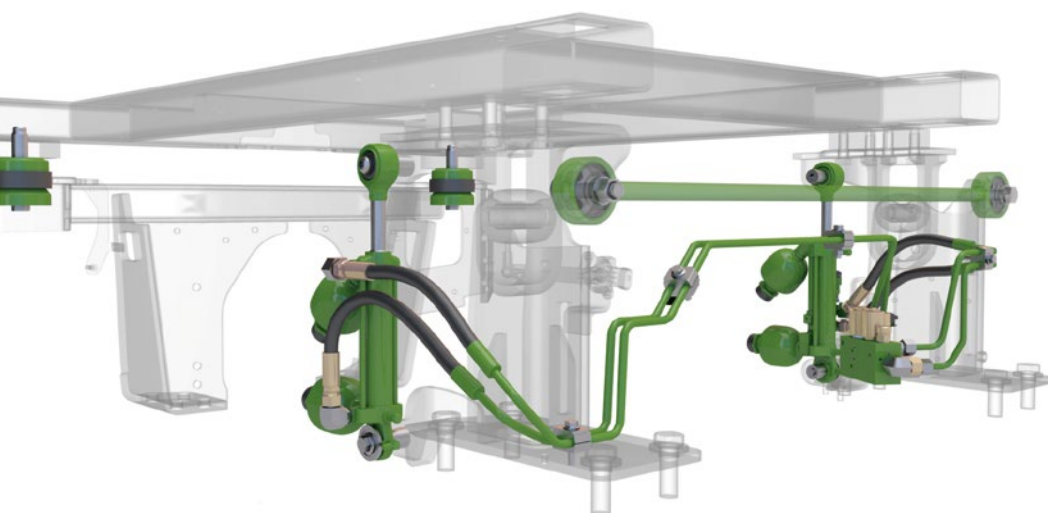
12 – Climate, radio and lighting controls

13 – PTO control levers

14 – Secondary brake lever

A SMOOTH RIDE

If your business involves towing very large loads, such as slurry tankers or driving long distances, the 7R Series is the ideal tractor. It's fast and highly manoeuvrable, with ActiveCommand Steering (ACS), Triple-Link Suspension Plus (TLS+) and extra strong front axle brakes.



Adaptive hydraulic cab suspension (HCS Plus) – A more relaxed day

Adaptive hydraulic cab suspension (HCS Plus) adjusts to changing ground conditions and requires no programming for road or field applications.



ACS – Reduced steering effort

The optional ActiveCommand Steering reduces steering effort to prevent operator fatigue:

- **Dynamic road wheel offset control** keeps your tractor on track with minimal effort. It automatically adjusts the road wheel angle based on the lateral acceleration of the tractor.
- **Variable Ratio Steering** provides light, agile steering at slower speeds and heavier steering for higher speeds. ACS automatically reduces to 3.5 lock to lock steering wheel turns for quick headland turns and lowers hand wheel motion to 75%.
- **Full Electronic Steering Control** removes all the drawbacks of a conventional steering column-to-wheel setup. It reduces vibration significantly and eliminates free play completely.



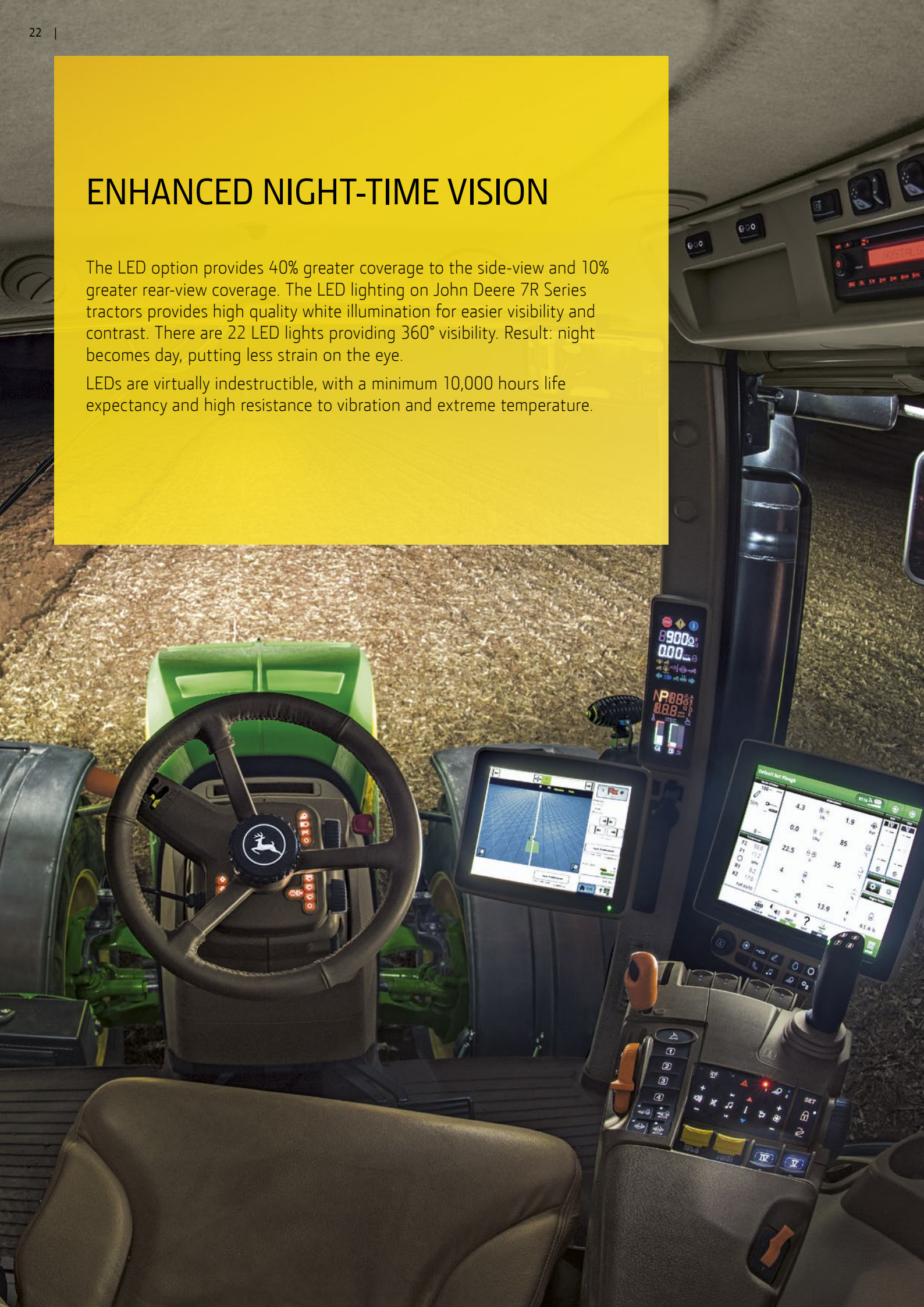
Triple-Link Suspension Plus

Our TLS integrated self-levelling front suspension puts maximum power to the ground. Triple-Link Suspension Plus (TLS Plus) is a fully integrated, self-levelling front suspension system. It further improves traction by keeping the front wheels in contact with the ground and lets you increase field speeds. TLS+ is available with a hydraulic differential lock and wet-disc brakes for serious pulling power. Triple-Link Suspension Plus allows you to select front axle settings for different uses.

ENHANCED NIGHT-TIME VISION

The LED option provides 40% greater coverage to the side-view and 10% greater rear-view coverage. The LED lighting on John Deere 7R Series tractors provides high quality white illumination for easier visibility and contrast. There are 22 LED lights providing 360° visibility. Result: night becomes day, putting less strain on the eye.

LEDs are virtually indestructible, with a minimum 10,000 hours life expectancy and high resistance to vibration and extreme temperature.



You've never seen anything like it!

Up to 26 lights provide 360° visibility – working lights wisely integrated into the front, rear and sides of the roof line to prevent possible damage from overhanging branches.



For your convenience, all lighting is easily controlled via the CommandCenter.

Base lighting:

- 1 Six front grill-mounted halogen lights
- 2 Twelve cab roof-mounted halogen lights
- 3 Two rear fender-mounted lights
- 4 Two rear turn signal and brake/tail lights
- 5 Two front corner lights & two belt-line lights
- 6 LH rotary beacon light

Premium lighting:

All halogen lights will be replaced by LED lights (except for two low beam road lights)

Optional:

- 7 Two extremity lights
- 8 Two loader/driving lights
- 9 RH Rotary beacon light

Front hitch and SCVs

The front hitch has a maximum lift capacity at the hitch balls of 5,200 kg. One or two independent iTEC capable front SCVs are available, with adjustable flow rates.

Rear Hitch-lift capacity

Designed for strength and versatility, the 3-point hitch has a lift capacity of up to 10,206 kg on selected models.

Effortless hitch control

Hitch controls are located in the CommandCenter: electronic sensors instantaneously relay information to the control module for fast and accurate corrections. Controls can also be accessed on the rear fender extensions.

Ultimate pulling power and lift



Massive power combines with a wide range of easy to use hitch and PTO options to give you unprecedented versatility. Integrated front hitch and PTO make the 7R Series an especially impressive performer in all front-implement applications, with two SCVs, ISOBUS and double-acting cylinders.

Independent rear selective control valves

7R Series tractors offer four, five or six rear electro-hydraulic SCVs. Each has its own controller, making field installation of extra SCVs easier.

Rear PTO

7R Series tractors have several PTO options, such as 1000E PTO, available to provide the versatility and flexibility needed to satisfy all implement demands at this power level.

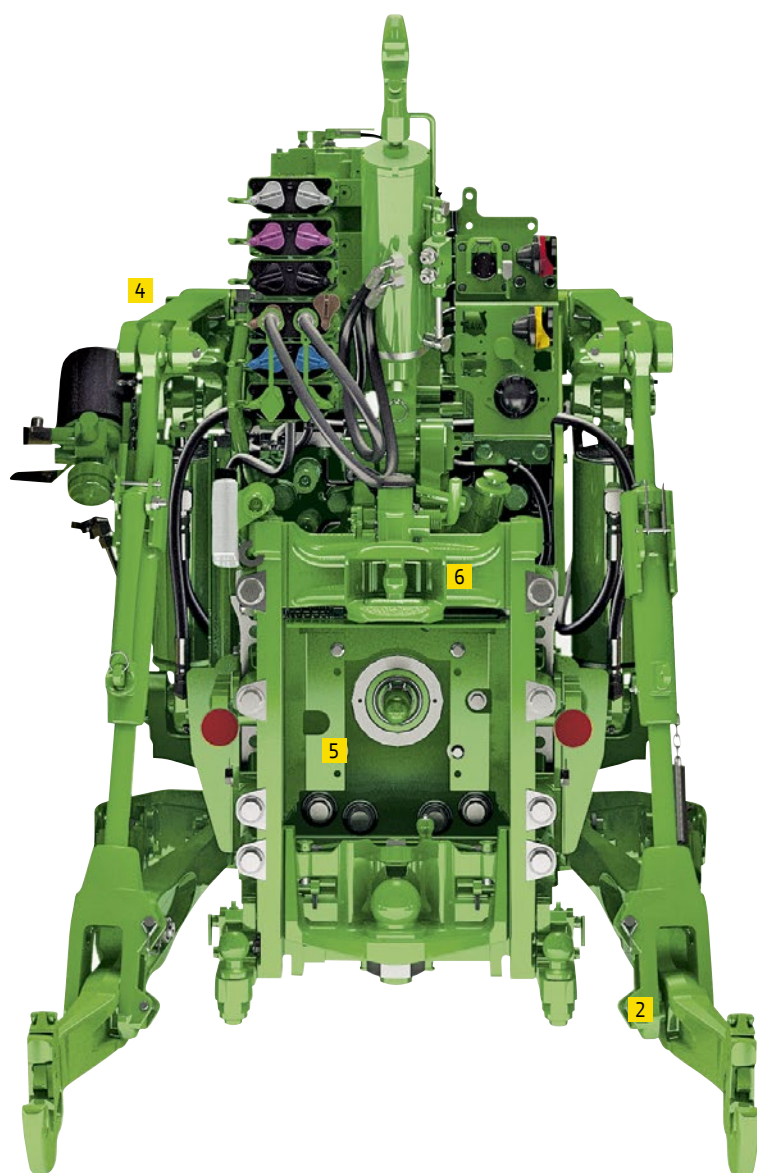
More attachability

The front and rear hitch are iTEC-compatible for total implement management. Electronic sensors relay information to the hitch control module for instantaneous and accurate corrections.

4

5

6



Automatic and mechanical wagon hitch with 38 mm ball-pin



Piton fix hitch



Ball-type hitch



Forced Steering System

7

Rear hitch options

7R Series tractors offer a variety of rear hitch options to complement application needs: lower lift capacity for lighter implement applications as well as higher lift capacity for heavier implements.

Automatic wagon hitch

Makes attaching implements much more convenient compared to manual wagon hitches.

Ball-type and piton fix hitches

These hitches are height adjustable, perfect for trailer operation and many other implement applications. When used in low position, they provide optimum traction and driving dynamics of tractor/trailer combinations.

Forced Steering System

For even higher versatility our hitches can be equipped with a forced steering system to operate large trailers with steering axles.



AUTOMATIC GUIDANCE – MAKE THE MOST OF YOUR DAY

AutoTrac hands-free steering adds more comfort: It reliably steers your tractor from day to night, through dust or on hilly terrain. This prevents costly overlaps or gaps and enables every operator to run at peak performance. With the Generation 4 CommandCenter and a StarFire receiver, all you need is AutoTrac activation and you're ready to start. Using AutoTrac you can expect up to 8* percent input savings and up to 14** percent productivity increase.

Top-of-the-line precision

Accessing John Deere's automatic guidance solutions starts with the new StarFire 6000 receiver. Capabilities include better signal stability for maximum uptime and new SF3 accuracy. This means for you: the receiver always keeps you on track whatever the conditions are. And with SF3 you get repeatable results – no guidance line or boundary drift – throughout one season.

The StarFire 6000 receiver works seamlessly with all John Deere guidance systems and all accuracy levels (SF1, SF3, Mobile and Radio RTK).

*From 'Lohnunternehmen' 1/2010

**From 'Landtechnik' 6/2006

TOP-OF-THE LINE PRECISION

Get started with the new StarFire 6000 receiver and experience a new level of precision and repeatability:

RTK with 2.5 cm pass-to-pass accuracy, featuring long-term repeatability including 14 days RTK Extend if you lose line of sight. The ideal solution for Controlled Traffic Farming.

New SF3 enabling 3 cm pass-to-pass accuracy and in-season-repeatability.

Improved SF1 with 15 cm pass-to-pass accuracy, free of charge



GreenStar 2630 Display

Benefit from the full power of AMS technology including advanced guidance and ISOBUS functionalities (page 32/33), advanced documentation and automation capabilities. The GreenStar 2630 supports all telematics functions available with JDLink like Remote Display Access enabling remote operator support and automatic data exchange with the MyJohnDeere Operations Centre.





ADVANCED GUIDANCE AND PRECISION FARMING SOLUTIONS – PERFECT RESULTS

Take the next step in precision productivity with iTEC Pro enhancing AutoTrac with automated headland turns. And spray, spread and seed with perfection even on wedge-shaped fields using John Deere Section Control.



iTEC Pro

Intelligent Total Equipment Control integrates AutoTrac automatic steering and implement management systems to control tractor speed, front and rear mounted implements and differential lock engagement. This allows hands-free turns, while reducing soil compaction. For picture-perfect headlands and consistent crop growth.

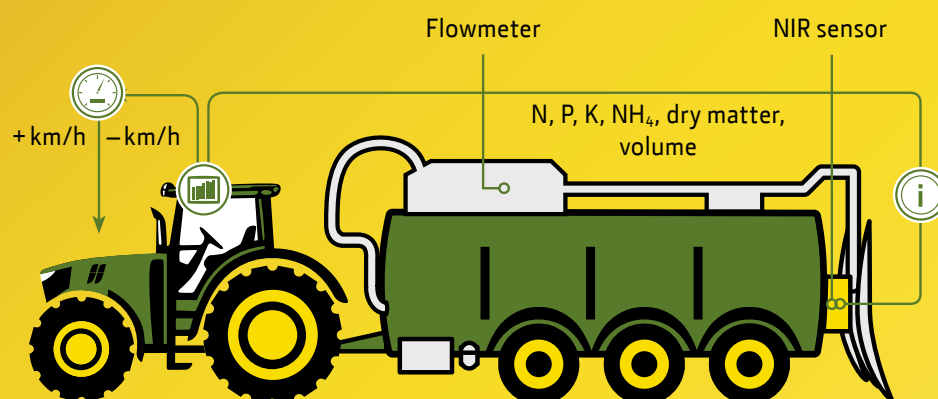


John Deere Section Control

Benefit from precision productivity: John Deere Section Control minimises skips and overlaps automatically on-the-go. As a result, you can do a better job faster – and save money on fertiliser, chemicals and seed. This ISOBUS standard solution is available for sprayers, seeders/planters and spreaders.

John Deere Manure Sensing – nutrients for your business

Manure is a high quality but extremely heterogeneous fertilizer. Nutrient levels vary significantly up to factor 25 – even within one tank load. John Deere Manure Sensing enables on-the-go analysis of nutrients in manure and thereby close to the applicator. An NIR (Near Infrared) sensor fitted to the slurry tanker measures N, P, K, NH_4 and dry matter with more than 4000 measurements per second. With a John Deere tractor, the sensor can directly command speed adjustments to increase or lower application rates based on your desired nutrient target level and even leveraging a prescription map. This enables you to maximise yields and meet legal requirements while cutting costs on mineral fertilizer.



Site-specific application

- Target rate based on kg/ha N, P, K, NH_4 or volume
- Limit rate for second ingredient.

Tractor-Implement Automation

- Automatic speed adjustment with John Deere tractors
- Manual speed adjustment with non-John Deere tractors, planters and spreaders.

Documentation

- Applied volume
- Applied amount of nutrients.

Easy access to collected data

- Nutrient maps easily accessible in the Operations Centre on MyJohnDeere.com



YOUR GATEWAY TO BETTER BUSINESS DECISIONS



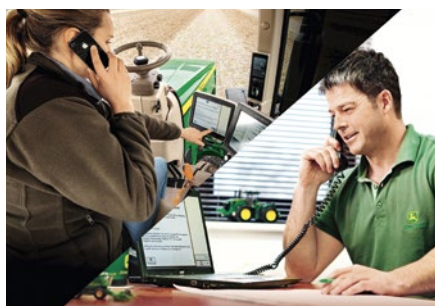
You're managing a complex enterprise. That's why optimising the overall business depends on being well connected to your ongoing operations. The Operations Center on MyJohnDeere.com, our Ag web portal, makes it simple. It connects you to your machines, your operators and your fields from one central location. It also allows you to exchange information seamlessly with your John Deere dealer, your contractor or other trusted partners.

It all starts with machine-to-office connectivity utilising John Deere telematics infrastructure, JDLINK. Utilising the inbuilt Modular Telematics Gateway on your 7R Series tractor, JDLINK takes the guesswork out of machine monitoring and optimisation and is a key enabler for maximising machine uptime.



Operations Center

Go to the Operations Center to allocate exact field locations for the the next jobs, track the work progress of your machines, easily assign work orders to your operators, view as-applied maps automatically sent from the field as well as create, analyse and share application reports with trusted partners and customers.



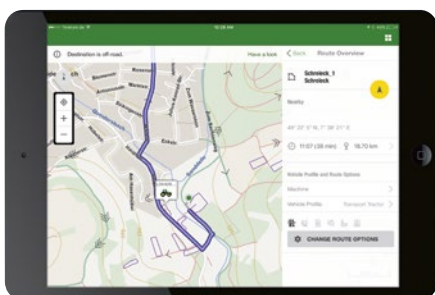
JDLink

JDLink Access shows you where your machines are, what they're doing and how they perform and can remotely assist your operators with machine setup and operation leveraging Remote Display Access. JDLink Connect additionally includes Wireless Data Transfer for seamless data exchange between your machine and the office.



Job management made easy

Eliminate paperwork and endless phone calls during job planning, execution and reporting. With MyJobConnect you can assign clearly defined tasks to your combine operators on-the-go, utilising the MyJobsManager App. Your operators can view the work orders in real-time and execute accordingly utilising the MyJobs App on their mobile device. And once the job is done you have instantly accurate and complete data at hand for quicker job reporting and professional invoicing.



Intelligent Ag Navigation & Fleet Logistics

Getting the right equipment at the right time to the right place is key to maximise efficiency and timeliness of multi-machine operations. MyJobConnect Premium extends MyJobConnect to a true mixed fleet logistics solution. It features fleet overview, turn-by-turn navigation based on a comprehensive field road database including estimated arrival times for vehicles at a predefined destination. For example, setting up navigation to the lead machine enables grain trailers to take the fastest and safest way to the field, while reducing operator stress.

With our "Connectivity Inside" package your 7R tractor comes already pre-equipped with a suite of smart technologies that help you increase profitability, comfort and uptime while reducing cost of operation. These technologies are:

- AutoTrac hands-free steering
- Connected Customer Support
- Access to the Operations Center on MyJohnDeere.com
- Tractor-Implement Automation
(to enable automatic speed adjustments with John Deere Manure Sensing)



All of the above plus a FarmSight dealer Service Package to train and support you with the use of these technologies is what we have to offer for those that decide to go for Connectivity Inside.

PARTS & SERVICE



PowerGard

Control your operating costs and maximise performance from your machine with maintenance and repair protection programmes from John Deere. There are three flexible options to choose from. See your dealer for detailed terms & conditions.



PowerGard Maintenance

Get regular scheduled maintenance and enjoy the full benefits and cost savings of using genuine John Deere parts.



PowerGard Protection

For new machines in connection with PowerGard Maintenance. PowerGard Protection starts after regular warranty ends and protects you up to a total of six years (or 6000 engine hours) from new. It covers engine, transmission and frame components.



PowerGard Protection Plus

For new machines in connection with PowerGard Maintenance. PowerGard Protection Plus starts after regular warranty ends and protects you up to a total of five years (5000 engine hours) from new. It provides extended coverage for repairs of key components.

John Deere FarmSight – profit from insight

John Deere FarmSight dealer services support you in the daily use of your 7R tractor with the latest AMS technology. Your 7R is equipped with JDLink and Service ADVISOR Remote as standard. You can participate in a 1 year test period of JDLink Access.



Uptime

Remote monitoring and service support designed to maximise machine uptime



Performance

Monitoring of key performance indicators of individual machines to maximise productivity and efficiency.



Logistics

Monitoring of multiple machines to optimise the efficiency of larger fleets.



Agronomics

Help and advice for making more informed business decisions to improve productivity and profitability.



Genuine. A word to take seriously

Only John Deere Genuine Replacement Parts are built to the same stringent standards as your 7R Series tractor. They fit and function perfectly, maintain performance and reliability, optimise fuel consumption and keep your tractor as strong and durable as on the day you purchased it.

Genuine for a reason

- Excellent parts availability
- Assured high performance quality
- Manufactured to OE standards.

Investing in your 7R pays dividends

Personalise your 7R with genuine John Deere attachments. They will support you in making each working day more efficient, more convenient and less fatiguing. Designed and engineered by John Deere, you can be sure they'll fit properly and are built to last.



Add more

Performance, productivity with e.g. ballasting solutions:

- Versatility with e.g. genuine hitch solutions
- Comfort, convenience with e.g. accessories, mounting brackets.



MORE POWER FOR THE TOUGHEST JOBS

Whether it's construction, road building, forestry, winter clearance or public maintenance: this tractor is highly versatile. For each and every application there are numerous options you can adapt to meet your individual requirements. They make light work of energy-sapping PTO applications with a soil stabiliser at crawling speed or quick transport trips with a fully laden dump trailer. With e23 or AutoPowr transmission, you can work flexibly and fuel efficiently.



Front loaders for 7R tractors

We have not only designed our front loaders specifically for a range of non-agricultural applications. All of the basic functions, such as the joystick, are integrated. This guarantees smooth operation and the highest possible level of operator comfort.



A powerful all-rounder

You will find 7R tractors hard at work in all kinds of non-ag applications. For example, the 7R's ability to shift massive payloads and its excellent PTO performance make it ideal in construction and road building projects.

Specification 7R Series Tractors

	7210R	7230R	7250R	7270R	7290R	7310R
ENGINE PERFORMANCE						
Rated Engine Power (97/68 EC), hp (kW)	210 (155)	230 (169)	250 (184)	270 (199)	290 (213)	310 (228)
Rated Engine Power with IPM (97/68 EC), hp (kW)	240 (177)	260 (191)	280 (206)	300 (221)	320 (235)	340 (250)
Max Engine Power at 1,900 rpm (97/68 EC), hp (kW)	231 (170)	253 (186)	275 (202)	297 (218)	319 (235)	341 (251)
Max Engine Power with IPM at 1,900 rpm (97/68 EC), hp (kW)	249 (183)	269 (198)	290 (213)	305 (224)	332 (244)	352 (259)
Rated Engine Power (ECE-R24), hp (kW)	202 (148)	221 (162)	240 (177)	259 (191)	278 (205)	298 (219)
Max Engine Power at 1,900 rpm (ECE-R24) hp (kW)	222 (163)	243 (179)	264 (194)	285 (210)	306 (225)	327 (241)
Max Engine Power with IPM at 1,900 rpm (ECE-R24), hp (kW)	239 (176)	259 (190)	279 (205)	293 (215)	318 (234)	338 (249)
Constant Power Range (rpm)	1,550 - 2,100	1,550 - 2,100	1,550 - 2,100	1,550 - 2,100	1,550 - 2,100	1,550 - 2,100
PTO Torque Rise (%)	40	40	40	38	40	40
Engine Peak Torque @ 1,600 rpm (Nm)	983	1,077	1,171	1,245	1,358	1,452
Rated Speed (rpm)	2,100					
Manufacturer	John Deere Power Systems					
Type	John Deere PowerTech PVS 6.8 L (B20 Diesel Compatible)	John Deere PowerTech PSS 6.8 L (B20 Diesel Compatible)			John Deere PowerTech PSS 9.0 L (B20 Diesel Compatible)	
Aftertreatment	Long life & maintenance-free diesel particle filter (DPF), Diesel oxidation filter (DOC), Selective Catalytic Reduction with DEF					
Engine Air Filter	Dual stage with engine cooling fan aspiration					
Aspiration	Single Turbocharger with variable geometry - air-to-air aftercooling and cooled exhaust gas recirculation	Dual Series Turbocharger with fixed geometry first stage & variable geometry second stage - air-to-air aftercooling and cooled exhaust gas recirculation				
Cylinder / displacement (l)	6 / 6.8				6 / 9.0	
Bore and stroke (mm)	106 x 127				118.4 x 136	
Fuel Injection	Electronically controlled, high-pressure common rail with electric fuel transfer pump (self priming)					
Fuel filter System	Two Stage with water separator and service indicator light					
TRANSMISSION OPTIONS						
CommandQuad EcoShift with Efficiency Manager						
20 Forward / 20 Rerverse Gears, 40 km/h, left hand reverser	Base - 40 km/h @ 1,570 rpm with group 47 tyres (195 cm), Option - 40 km/h @ 1,500 rpm with group 48 tyres (205 cm)		N/A			
e23 Transmission with Efficiency Manager						
23 Forward / 11 Reverse Gears, 40 km/h, left & right hand reverser	Option - 40 km/h @ 1,640 rpm with group 47 tyres (195 cm), Option - 40 km/h @ 1,560 rpm with group 48 tyres (205 cm)		Base - 40 km/h @ 1,680 rpm with group 47 tyres (195 cm), Option - 40 km/h @ 1,600 rpm with group 48 tyres (205 cm), Option - 40 km/h @ 1,520 rpm with group 49 tyres (215 cm)		Base - 40 km/h @ 1,600 rpm with group 48 tyres (205 cm), Option - 40 km/h @ 1,520 rpm with group 49 tyres (215 cm)	
23 Forward / 11 Reverse Gears, 50 km/h, left & right hand reverser	Option - 50 km/h @ 1,960 rpm with group 47 tyres (195 cm), Option - 50 km/h @ 1,860 rpm with group 48 tyres (205 cm)		Option - 50 km/h @ 2,000 rpm with group 47 tyres (195 cm), Option - 50 km/h @ 1,900 rpm with group 48 tyres (205 cm), Option - 50 km/h @ 1,800 rpm with group 49 tyres (215 cm)		Option - 50 km/h @ 1,900 rpm with group 48 tyres (205 cm), Option - 50 km/h @ 1,800 rpm with group 49 tyres (215 cm)	
AutoPowr						
Variable, 0,05 - 42 km/h, left & right hand reverser	Option - 40 km/h @ 1,400 rpm with group 47 tyres (195 cm), Option - 40 km/h @ 1,330 rpm with group 48 tyres (205 cm)		Option - 40 km/h @ 1,440 rpm with group 47 tyres (195 cm), Option - 40 km/h @ 1,360 rpm with group 48 tyres (205 cm), Option - 40 km/h @ 1,290 rpm with group 49 tyres (215 cm)		Option - 40 km/h @ 1,360 rpm with group 48 tyres (205 cm), Option - 40 km/h @ 1,290 rpm with group 49 tyres (215 cm)	
Variable, 0,05 - 50 km/h, left & right hand reverser	Option - 50 km/h @ 1,750 rpm with group 47 tyres (195 cm), Option - 50 km/h @ 1,660 rpm with group 48 tyres (205 cm)		Option - 50 km/h @ 1,800 rpm with group 47 tyres (195 cm), Option - 50 km/h @ 1,700 rpm with group 48 tyres (205 cm), Option - 50 km/h @ 1,620 rpm with group 49 tyres (215 cm)		Option - 50 km/h @ 1,700 rpm with group 48 tyres (205 cm), Option - 50 km/h @ 1,620 rpm with group 49 tyres (215 cm)	

7210R					7230R		7250R		7270R		7290R		7310R	
AXLES														
Rear Axles														
100 x 2,550 mm (3.94 x 100.4 in.), variable range			Available						N/A					
100 x 2,808 mm (3.94 x 110.5 in.), variable range			Available						N/A					
100 x 3,012 mm (3.94 x 118.5 in.), variable range			Available						N/A					
110 x 2,550 mm (4.33 x 100.4 in.), variable range			N/A						Available					
110 x 3,012 mm (4.33 x 118.5 in.), variable range			N/A						Available					
120 x 2,550 mm (4.72 x 100.4 in.), variable range			N/A						Available					
120 x 3,012 mm (4.72 x 118.5 in.), variable range			N/A						Available					
Flange Axle, 335 mm bolt circle						Available								
Rear Wheel Equipment - See dealer for tyre size selection and limitations			Group 47 (195 cm) / 48 (205) tyres available as Singles / Duals			Group 47 (195 cm) / 48 (205) / 49 (215 cm) tyres available as Singles / Duals						Group 48 (205) / 49 (215 cm) tyres available as Singles / Duals		
Front Axles														
1150 Series MFWD			Optional				N/A							
1300 Series MFWD							Base							
1300 Series MFWD, with Wet Disc Front Brakes							Option for 40 km/h, Base for 50 km/h							
Triple Link Suspension PLUS (TLS+)							Available for 1300 Series axles							
Differential Lock														
Differential Lock - Rear Axle							Full-locking electro-hydraulic							
Differential Lock - Front Axle 1150 Series MFWD			Limited Slip				N/A							
Differential Lock - Front Axle 1300 Series MFWD							Limited Slip							
Differential Lock - Front Axle 1300 Series MFWD with Wet Disk Front Brakes							Full-locking electro-hydraulic (actuated at same time as rear diff-lock)							
ELECTRICAL SYSTEM														
Alternator/Battery							Base: 200 amps / 12 Volt Option: 240 amps / 12 Volt							
Total cold cranking amps							1,850 (2 batteries in parallel - 925 CCA, group 31 batteries)							
STEERING														
Type							Tilt-telescope with Memory							
Hydraulic power-steering with electric pump back-up							Base - 406 mm Steering Wheel Diameter, Ratios / Turns Lock to Lock - 1300 MFWD (14.2 : 1 / 3.4)							
Active Command Steering (ACS) with electric pump back-up							Optional - 345 mm Steering Wheel Diameter, Variable ratio depending on speed: 15:1 - 23:1; Turns Lock to Lock 3.1 - 5.0; with Dynamic Road Wheel Offset Control and passive tactile feedback							
HYDRAULIC SYSTEM														
Type							Closed-centre, pressure & flow compensated system (PFC) with load sensing							
Main pump, axial piston (displacement)							Base: 63 cm ³ - Optional: 85 cm ³							
Maximum pressure							204 bar							
Rear Selective control valves with 1/2 inch ISO couplers							4 / 5 / 6							
Rated flow, 63 cm ³ pump (l/min)							162							
Rated flow, 85 cm ³ pump (l/min)							223							
Maximum flow at a single Rear SCV (l/min)							132							
Front SCV's							1 SCV in base with Front Hitch, 2 SCV's optional with Front Hitch							
Available flow at Front SCV's (l/min)							126							
Oil Take out capacity in base / optional with auxiliary tank (l)			CQ: 85 - e23 & AutoPowr: 65 / 85				e23 & AutoPowr: 65 / 85							
Power beyond couplers							Optional							
REAR HITCH														
Type							Electro-hydraulic Lower Link Sensing; load & depth control, infinite mix, float							
Category							3/3N							
Coupler System							Quick Coupler / Hook Style Ends							
Lift capacity through full lift range, with Quick Coupler (610 mm behind the coupler, OECD)			Base - 5,443 kg - Cat. 3/3N Option - 6,894 kg - Cat. 3/3N				Base - 7,847 kg - Cat. 3/3N							

Specification 7R Series Tractors

	7210R	7230R	7250R	7270R	7290R	7310R
Maximum Lift Capacity, with Quick Coupler	Base - 7,300 kg - Cat. 3/3N Option - 9,208 kg - Cat. 3/3N		Base - 10,206 kg - Cat. 3/3N			
Lift capacity through full lift range, with Ball/Hook Style Ends (610 mm behind the coupler, OECD)	Base - 5,443 kg - Cat. 3/3N Option - 6,894 kg - Cat. 3/3N		Base - 6,894 kg - Cat. 3/3N Option - 7,847 kg - Cat. 3/3N			
Maximum Lift Capacity, with Ball/Hook Style Ends	Base - 7,300 kg - Cat. 3/3N Option - 9,208 kg - Cat. 3/3N		Base - 9,208 kg - Cat. 3/3N Option - 10,206 kg - Cat. 3/3N			
Lower Link Stabilization	Sway Blocks with Quick Coupler; Sway Blocks or Deluxe Sway Stabilizers with Ball/Hook End Style Couplers					
Centre Link	Option - Hydraulic Centre Link - Cat. 3 (90 mm)					
DRAWBAR & TRAILER HITCH						
Swinging Drawbar	Cat. 3 with 38 mm pin / Cat. 3 with 38 mm pin with heavy duty support					
Maximum Vertical Load	1,837 - 2,766 kg with Cat. 3, 4,535 kg with Cat. 3 HD					
3-in-1-hitch, with Cat. 3 drawbar	Optional					
Wagon hitch, mechanical or automatic, for 3-in-1-hitch	Optional					
80 mm Ball Hitch, for 3-in-1-Hitch	Optional					
Piton Fix Hitch, for 3-in-1-Hitch	Optional					
Pick-up hitch, with hook and Cat. 3 drawbar	Optional					
FRONT HITCH, optional						
Type	Standard or Premium Front Hitch (less / includes pushbar and ground engaging lift arms)					
Category	3N					
Lift capacity through full lift range, with Ball/Hook Style Ends (610 mm in front of the coupler, OECD) (kg)	3,150					
Maximum lift capacity (kg)	5,200					
REAR PTO						
Type	Electro-hydraulic switched via oil-cooled multi-disc clutch					
PTO 1,000 rpm - Engine rpm @ rated PTO speed	1,950					
PTO 540 / 1,000 rpm - Engine rpm @ rated PTO speed	1,950 / 1,950					
PTO 540E / 1,000 / 1,000E rpm - Engine rpm @ rated PTO speeds	1,750 / 1,950 / 1,750					
PTO 540 / 540E / 1,000 rpm - Engine rpm @ rated PTO speeds	1,950 / 1,750 / 1,950					
Stub diameter 45 mm (1-3/4 in.), 20-spline, 1,000 rpm	Base					
Stub diameter 45 mm (1-3/4 in.) 20-spline, 1,000 rpm or 35 mm (1-3/8 in.) 6-spline/ 21-spline, 540/1,000 rpm, shifting at the rear of the tractor	Optional					
Stub diameter 35 mm (1-3/8 in.) 6-spline 540E rpm / 21-spline 1,000/1,000E rpm, or 45 mm (1-3/4 in.) 20-spline 1,000 rpm, Electronically Shiftable in Cab	Optional					
Stub diameter 35 mm (1-3/8 in.) 6-spline 540/540E rpm / 21-spline 1,000 rpm, or 45mm (1-3/4 in.) 20-spline 1,000 rpm, Electronically Shiftable in Cab	Optional					
FRONT PTO, optional						
Type	Electro-hydraulic switched via oil-cooled multi-disc clutch					
PTO 1,000 rpm - Engine rpm @ rated PTO speed	1,940					
Stub diameter 45 mm (1-3/4 in.), 20-spline, 1,000 rpm, Clockwise Rotation	Optional					
Stub diameter 35 mm (1-3/8 in.), 21-spline, 1,000 rpm; Clockwise Rotation	Optional					
Stub diameter 35 mm (1-3/8 in.), 6-spline, 1,000 rpm, Counter-Clockwise Rotation	Optional*					
* Availability dependent upon destination						
CAB						
Specifications	CommandView III Cab, Panorama Door, Automatic Air conditioning and Generation 4 CommandCenter Display					
Cab Suspension	Optional - Hydraulic Cab Suspension Plus (HCS Plus) or ActiveSeat					
Noise level, dB(A)	68				72	
Cab glass area (m²)	6.5					
Cab volume (m³)	3.6					
Display	Generation 4 Command Centre 4100 with 7 inch or 4600 with 10 inch Touchscreen Display					

	7210R	7230R	7250R	7270R	7290R	7310R
MISCELLANEOUS						
GreenStar Ready				Base		
ISOBUS Implement Connection				Base		
AutoTrac Ready				Base		
JDLink with Ethernet Harnesses for CommandCenter				Base		
ServiceADVISOR Remote, capable with JDLink Access & Connect				Optional		
Modular Telematics Gateway (MTG)				Base		
Video input in CommandCenter for camera		1 Video input for 4100 Display, 4 Video inputs for 4600 Display, Using PAL or NTSC signal				
Immobilizer				Optional		
Hydraulic Trailer Brake System				Optional		
Pneumatic Trailer Brake System		Optional - Dual Line System, incl. Air Dryer				
CAPACITIES						
Fuel tank, with CommandQuad / group 47/48 tyres (l)	503			N/A		
Fuel tank, with e23 / group 47/48 tyres (l)				475		
Fuel tank, with AutoPowr / group 47/48 tyres (l)				520		
Fuel tank, with e23 / group 49 tyres (l)	N/A			500		
Fuel tank, with AutoPowr / group 49 tyres (l)	N/A			543		
DEF tank (l)				23		
Cooling System (l)		39.5			44.5	
Engine oil volume (l)		24.5			27	
Transmission-Hydraulic system (l)				160		
TLS Plus w/ Limited Slip (l)				14.4		
TLS Plus w/ Diff. Lock (l)				10.8		
Front PTO Oil (l)				4.0		
Wheel Hub Without Brakes (l)				3.8		
Wheel Hub With Brakes (l)				3.9		
DIMENSIONS AND WEIGHTS						
Wheelbase MFW D / TLS (mm)				2,925		
Overall Length, mm						
Incl. rear hitch and front weight support without / with weights				5,547 / 5,966		
Incl. rear hitch and front hitch in uppest position				5,910		
Overall Height - Distance from rear axle centre line to top of the cab, mm						
With Group 47/48 Tyre Configuration				2,368		
With Group 49 Tyre Configuration	N/A			2,458		
Overall Width, mm						
Overall width¹				2,602		
Flange to Flange width				1,892		
Rear Axle, End to End (short / long)²				2,550 / 3,012		
Ground Clearance (mm)						
Front Axle Clearance³				495		
Drawbar clearance with Gr 47 / 48 / 49 tyres	352 / 420 / N/A			352 / 420 / 463		N/A / 420 / 463
Turning Radius						
With 380/85R34 group 42 tyres @ 60" spacing, 1,300 (m)			7.0			N/A
With 600/70R30 group 43 tyres @ 74.1" spacing, TLS (m)			6.7			
With 620/75R30 group 44 tyres @ 82" spacing, TLS (m)	N/A			8.7		
Weights						
Average Shipping Weight (kg⁴)	10,470		10,770		10,910	
Average Payload Capacity (kg⁴)	4,030		5,230		5,090	
Maximum Permissible Weight (kg)	14,500			16,000		
TYRE SIZES						
Front axle max. tyre sizes (diameter in cm)	600/70 R30 (160)			620/75 R30 (168)		
Rear axle max. tyre sizes (diameter in cm)	710/70 R42 (205)			710/75 R42 (215)		

¹ Equipped with 710/70R38 or 710/70R42 tyres, tread settings of 1,793 mm (valve stem out) or 2,023 mm (valve stem in)² Overall width dependent on axle configuration and tread settings³ Equipped with 1,300 axle, tyre group 43, 420/85R34 tyres⁴ Equipped with TLS/AutoPowr/flange axle/front support/hooks with sway blocks/3 in 1 hitch rails with wagon hitch/shipping fuel/rear tyres 650/85R38 /front tyres 540/65R34

Editions and Connectivity Packages 7R Series Tractors



Editions 7R Series Tractors

DESCRIPTION	PREMIUM	ULTIMATE
TLS+ front axle suspension, 40 degree swivel seat with CommandARM controls, iTEC headland management system, AutoTrac/ISOBUS ready, JDLink, Automatic Air Conditioning & Electrically adjustable right and left mirrors are in base		
TRANSMISSION		
e23 Transmission	■	■
AutoPowr Transmission	□	□
CAB		
Active seat	■	□
Cab suspension	–	■
4100 - 7" CommandCenter Display	■	–
4600 - 10" CommandCenter Display	□	■
Standard Light Package	■	–
Premium Light Package	–	■
Outside Mirrors, Heated	–	■
Cooling compartment	–	■
Standard - radio	■	–
Premium - radio	–	■
Battery Disconnect Switch	■	■
HYDRAULICS		
Hydraulic pump 162 l/min	■	–
Hydraulic pump 223 l/min	□	■
4 electrical SCVs - Premium	■	–
5 electrical SCVs - Premium	□	■
6 electrical SCVs - Premium	□	–
Electrical joystick	–	■
Rear hitch with two sway blocks	■	–
Rear hitch with two deluxe stabilizers	□	■

Legend: ■ base for editions; □ optional for editions; – excluded for editions

Editions can be modified by John Deere without previous notification. Check with your John Deere dealer for the latest specification.



Connectivity Packages 7R Series Tractors*

DESCRIPTION	PREMIUM	ULTIMATE
AutoTrac Ready	Base	Base
Tractor Implement Automation	■	■
4600 - 10" CommandCenter Display	■	■
CommandCenter AutoTrac Activation	■	–
CommandCenter Premium Activation	–	■
JDLink Access	■	–
JDLink Connect	–	■
MyJobConnect (MyJobs / MyJobs Manager)	–	■
StarFire 6000 - SF1	□	□
StarFire 6000 - SF3	□	□

Legend: ■ base for editions; □ optional for editions; – excluded for editions

* Elements of the Connectivity Packages are a limited promotional offer and include time based subscriptions. Be aware that some of the Connectivity Package as well as elements could not be available in all regions. Please contact your local John Deere dealer for availability.

7R SERIES EFFICIENT. STRONG. QUIET.

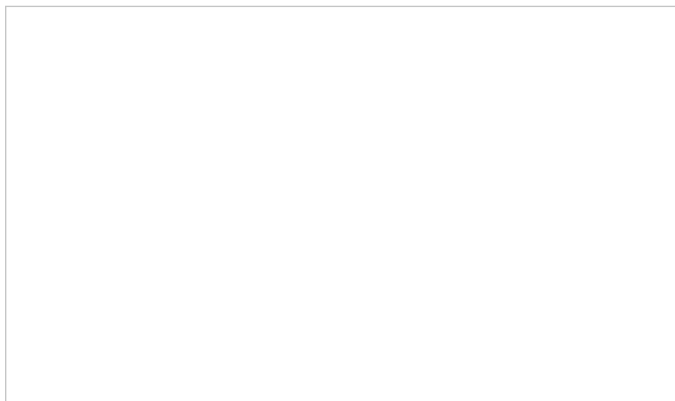




NOTHING RUNS LIKE A DEERE!

We have solutions to your challenges! John Deere is committed to keeping you up and running. That's why our products and technologies are quality-built, state-of-the-art and efficient. We've invested generously in building an effective dealer network so we can be like a good neighbour – there to help when you need us.

That's why all of our dealer employees are John Deere trained. They know every nut and bolt on your equipment and they're skilled at diagnosing any potential problems. Count on John Deere for all your tractor needs. With more than 175 years of experience in the farm equipment business, we can honestly say: Reliability is our Strength.



JOHN DEERE



John Deere Financial – A range of finance options as powerful as our products. Contact your John Deere dealer for a comprehensive range of finance options to suit the specific needs of your business. Not available in all countries please consult your local dealer.

This literature has been compiled for worldwide circulation. While general information, pictures and descriptions are provided, some illustrations and text may include finance, credit, insurance, product options and accessories not available in all regions. Please contact your local dealer for details. John Deere reserves the right to change specification and design of products described in this literature without notice. The green and yellow colour scheme, the leaping deer logo and the JOHN DEERE word mark are trademarks of Deere & Company.

JohnDeere.com