



75 D

Diesel self-propelled crane with on-board operator

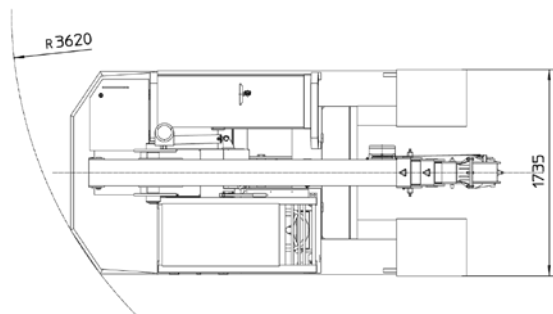
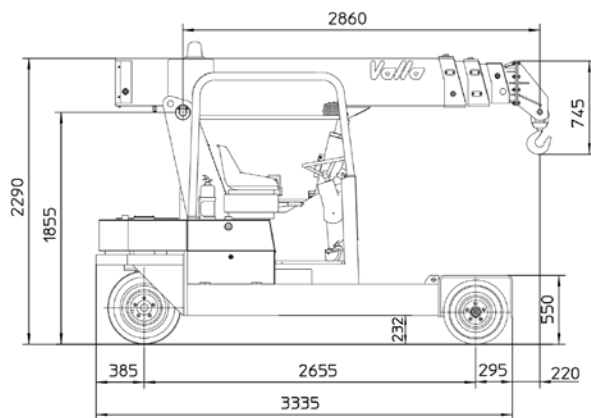
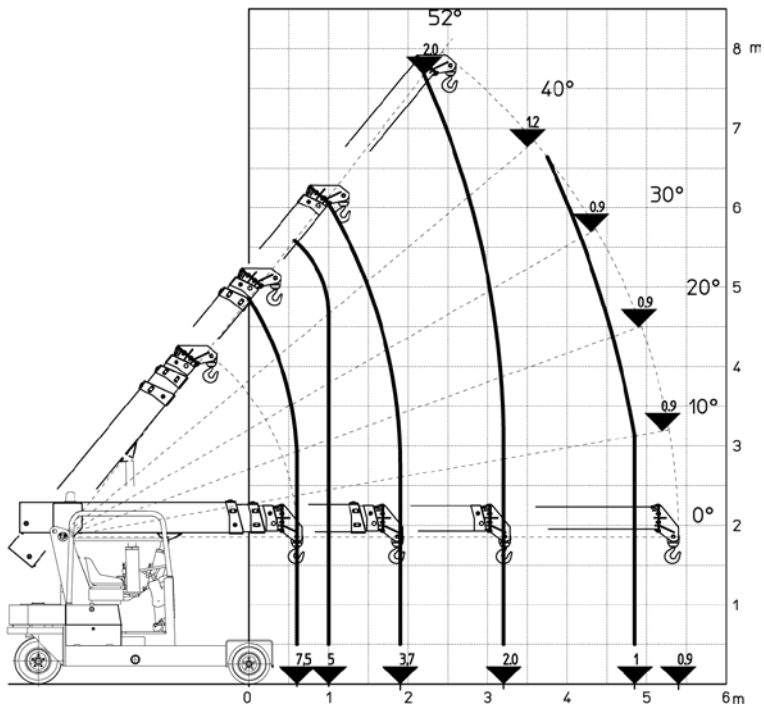


FEATURES

MAX CAPACITY 7.500 kg
MAX BOOM EXTENSION 5.4 m
MAX BOOM ANGLE 52°
MIN BOOM ANGLE 0°
WEIGHT 6.100 kg
CONFORMITY 2006/42 CE; 2014/30 CE;
 2014/35 CE; 2000/14 CE; EN 13000

CHASSIS	6 wheels structure made in high quality steel, with internal counterweights and operator cab
WHEELS	Front: n°4 superelastic wheels 21x8 – R9” Rear: n°2 superelastic wheels 6,5 – R10”
TRACTION	Diesel 4 cylinders engine, air cooled, , HP 49, kW 36 EU NRMMD 97/68 EC Stage III°
TRANSMISSION	Automatic (hydrostatic) “automotive”. Differential axle. Max speed 13 Km/h.
BRAKES	Foot hydraulically operated brakes (disc on front, drums on rear wheels). Parking hand brake mechanically operated
SUSPENSIONS	Oscillating rear unit with mechanical lock
BOOM	Manufactured in high quality steel, composed by four elements: main boom and three telescopic hydraulic sections on nylon sliding pads. Adjustable side guide sliding pads for the recovery of the game
BOOM’S CONTROL	By joystick
OPERATOR’S PROTECTION	Made of sturdy 4-post steel frame with steel grille with full visibility
SAFETY SYSTEM	Electronic load moment indicator (LMI) with display showing: lifted load, max allowed load, tilting percentage, operating radius, angle, telescope and light indicators on the operative mode
TOTAL WEIGHT	Total weight: approx. Kg. 6.100
MAX CAPACITY	Max Capacity: Kg 7.500
OPTIONALS	Hydraulic winch, loading platform, mechanical jib, hydraulic jib, radio control only for aerial part, closed cabin

The values shown may vary depending on the configuration of the machine. The values shown may change at any time without notice



Rear steering with hydraulic cylinder between chassis and traction group for great performance also on not flat surfaces



Wide range of optional accessories for many applications

Valla
MANITEX

VALLA MANITEX SRL
Via Leonardo da Vinci 12
29016 - Cortemaggiore (PC) - ITALY

PHONE: +39 0523256411
EMAIL: info@valla.com
SITE: www.valla.com

cod.891.059 ed.06/2018