

## STANDARD EQUIPMENT

750T • 680T

### CAB

Soundproofed, vibration-insulated, 4-point suspension cab, with large, curved, tinted windows. Excellent all around visibility from a spacious and comfortable work environment for increased safety and efficiency. Extremely roomy cab with a large number of storage possibilities. Optimized visibility for total operating safety at maximum dump height.

#### Access.

**750T** On the left side using the large convenient steps. The right side window can be opened and locked for ventilation / communication either slightly open or fully open.

**680T** The cab can be accessed from both sides using the large and convenient steps, and on the right thanks to the collapsible control console.

**Doors.** Fully-glazed doors for optimal view to the sides.

Both doors can be opened and locked in two positions (gap or 180°).

**680T** + Full access through right-hand door by folding back the joystick console.

#### Driver's seat.

**750T** With automatic seat belt, weight, backrest and horizontal adjustment.

**680T** Mechanically-sprung comfort seat with automatic seat belt, weight adjustment, backrest adjustment and dual horizontal adjustment.

#### FOPS-II protective screen

**Heating, ventilation.** Easy to operate, powerful 3-speed unit.

**680T** + Recirculated-air mode.

**Instrument panel.** Neatly designed instrument panel with control lights and ergonomically arranged tip switches.

**680T** Function-related, colour-coded tip switches

#### Steering column

**750T** Rigid.

**680T** Telescopic and incline-adjustable.

**Joystick console.** Ergonomic lay-out of driver control console, including continuous operation function:

**750T** Mechanically controlled joystick for raising/lowering the boom and tilting/dumping, with a toggle switch for selecting the driving direction and retracting/extending the telescopic boom, including continuous operation function.

**680T** Hydraulically controlled joystick for raising/lowering and tilting in/tilting out the boom, with rocker switch for selecting the drive direction along with integrated 3rd control circuit (proportional steering) for locking/unlocking the quick-hitch plate and for operating hydraulic implements, and for retracting/extending the telescopic boom. Function lighting integrated in the joystick. Switch for 3rd control circuit (continuous operation). Switch for 100% differential lock.

**Rear-view mirrors.** Large outside mirrors, foldable to notched positions on either side.

#### Sun visor

**Wipers.** Front and rear. Double blade covers 90 % of front windscreen for optimal visibility. The large washer fluid container offers extended use before the need for refill.

#### Floor mat

The floor mat is level with the frame enabling easy cleaning of the cab interior.

**680T** The hanging pedals make the cab floor easy to clean.

#### Cab lights

#### 12 V electric socket

#### LIGHTS

**Headlights.** 2 at front with main / dipped beam and side light

**Working lights.** 1 at rear left. **Rear lights, brake lights, indicators**

#### HOSE BURST VALVE

Lift, tilt and telescopic rams.

#### ENGINE COVER

Opens wide for optimal maintenance access.

#### QUICK-HITCH FACILITY

Hydraulic, 3<sup>rd</sup> control circuit including hose lines and quick-connects

#### ENGINE AIR SUPPLY

With air filter safety cartridge.

#### KEY SYSTEM

One-key system for doors, ignition, engine hatch and fuel tank.

#### TYRES

**750T** 12.8–18

**680T** 14.5–20

## OPTIONS

750T • 680T

### CAB

Air-sprung driver's seat, radio unit, rotating beacon, 2 front working lights, driver's seat in synthetic leather, protective grille for front windscreen and headlights, manual throttle.

**680T** Programmable auxiliary heating (incl. engine preheating), heated seat, heated outside mirrors, air conditioning, radio installation setup, 1 additional rear working light

#### PERFORMANCE OPTIONS

Unpressurised front reflux, electric socket for front implements, low-speed control, manual throttle, shielding of telescopic boom, front deflector for boom

**750T** + Load stabiliser

**680T** + Additional circuit for rear tool attachments, shock absorber with automatic function (load stabiliser), tipper hydraulics, Power Flow work hydraulics with increased pump performance, electric socket for rear implements, crab steering and front-wheel steering, ball coupling for trailer, automatic trailer coupling, air brake unit, Power Flow extension line.

#### WORK PLATFORM ATTACHMENTS

## TOOL ATTACHMENTS

750T • 680T

Pallet forks, standard bucket, grab bucket, lightweight materials bucket, super-lightweight materials bucket, high-tilt bucket, side-swing bucket, bulk materials bucket, tree replanter, front ripper, material pusher, work platform, street cleaner, snow blade, collapsible pallet forks.

**680T** Snow blower, snow shovel, cold planer, rear-mounted hydraulic gritter, trailer, 3-point adapter with PTO.

Other tool attachments on request.

# You won't find the original just anywhere:

AUTHORIZED KRAMER PARTNERS ARE ALWAYS THE BEST ADDRESS.

[www.kramer.de/Haendler](http://www.kramer.de/Haendler)

02/2010 art.nr. 1.000190598

# Zoom

Kramer Allrad tele wheel loaders

750T • 680T



#### Kramer-Werke GmbH

Wacker Neuson Straße 1  
D-88630 Pfullendorf  
Tel. 00 800 90 20 90 20  
Fax +49(0)7552 92 88-234  
info@kramer.de  
www.kramer.de



kramerALLRAD®



kramerALLRAD®

KRAMER TELE WHEEL LOADERS DEMONSTRATE A CLEAR FOCUS ON A PRINCIPLE THAT PROMISES PROFITABLE RESULTS, SUSTAINABLY: MULTIPLE USES AT THE LEAST COST.

A technology that is designed for fast adaptability and which captures the moment with the speed of a camera's auto-focus: distance, angle and optimal approach are determined in any given situation and at the mere touch of a button, for perfect focus on every point of the value-creation chain and guaranteed process optimization.

A classic rigid-frame wheel loader for optimal and safe operation, even when used with work platforms. A telescopic boom that offers considerably greater reach, stacking and dumping heights.

**With a keen eye on the essentials.**

Focus on Productivity.





# Perfect balance: Perfect qualities.



## 1 System carrier

The perfect visibility, the one-piece chassis and the powerful hydraulics provide the ideal conditions for the use of work platforms, pruners, buckets and other attachments. A top-quality system.

## 2 Attachment areas

Not only do Kramer tele wheel loaders reach impressive working heights, they also serve as the ideal workhorse for the classic work of the wheel loader, with their practical and easily accessible power sources at both front and rear.

## 3 Steering modes

All-wheel steering, front-wheel steering and crab steering prove particularly valuable when using a tele wheel loader. This versatility means they are capable of precise steering, delicate stacking and safe and secure travel at all times.

## 4 Comfort zones

Ergonomically-optimised workstation with perfect visibility upwards, comfortable hydrostatic drive, sensitive and powerful work hydraulics and easy servicing access: high performance just got easier.

## 5 Model ranges

Kramer tele wheel loaders are typical examples of High Balanced Handling: they embody the perfect balance that proves its worth daily in all Kramer mini-loaders, wheel loaders, telehandlers and compact telehandlers.

**ALL-ROUND STRENGTHS.** FROM PERFORMANCE TO VALUE-FOR-MONEY. FROM EASY HANDLING TO USER COMFORT. FROM FUNCTION TO DESIGN. A RADICAL RETHINK THAT OPENS UP A VISTA OF NEW PERSPECTIVES. ALL UNDERPINNED BY A SOLID STRUCTURE.



A sweeping panorama.  
More than just a loader.  
More reach.  
More manoeuvrability.

**KRAMER TELE WHEEL LOADERS BRING INCREASED PROFITABILITY WITHIN EASY REACH.** FOR INCREASED VERSATILITY OFFER NOT ONLY ADDITIONAL POSSIBILITIES, BUT ALSO DECISIVE IMPROVEMENTS TO EXISTING WORK PROCESSES.



Perfect 360° visibility and a familiar central seating position ensure that the operator remains on top of every situation.

Anyone having to stack pallets precisely, load lorries efficiently and clear paths through snow must be able to see clearly what is happening at all times. The safety aspect remains paramount, too, and the clear visibility that is a feature of the loader's design, along with the high and central driver's seat position, mean there are no blind spots.



**1.5 m more tipping height** for loading on to high-sided lorries.  
**1.5 m more reach**, for working over ditches.

And this added versatility brings with it useful productivity gains.

Kramer tele wheel loaders are fully fledged wheel loaders with extra reach and stacking / dumping height. Thanks to the telescopic boom, greater height and reach can be attained with comfort, security and precision. They are wheel loader, work platform and stacker rolled into one.

**The 750T with the focus on the essential:**

Basic functions are as good as you get, optimized power to weight ratio, high stability plus that important extra lift and dump height. A star of the 60 hp class.

**The 680T for extra comfort and versatility:**

The sky's the limit when it comes to individual equipment and technical options for this powerful 80 hp machine, from ecospeed to auxiliary hydraulics.





# Safety means solidity.

Flexibility and manoeuvrability require a solid framework. For top performance.

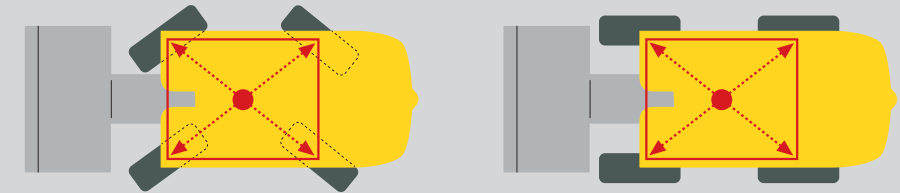
# 750T 680T

WITH EACH TELE WHEEL LOADER FROM KRAMER, YOU CAN ALWAYS BE SURE OF LIFTING AND TRANSPORTING WHATEVER THE LOADER HAS PICKED UP. WE CALL THIS **“LOAD STABILITY ACCORDING TO THE STACKER PRINCIPLE”**.



We remain constant to our fundamentals with the tele wheel loaders too: rigid frame, four-wheel steering and steering manoeuvrability from lock to lock.

Only four-wheel steering can guarantee a consistently distributed payload, since the centre of gravity of the machine for each load only moves along the longitudinal axis and never shifts outwards. This prevents the risk of tipping, and even abrupt steering movements cannot throw the machine out of kilter.

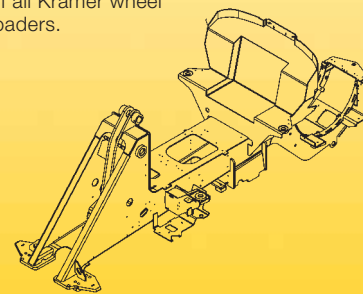


## The proof of the pudding is in the eating. What proves its worth underpins its value.

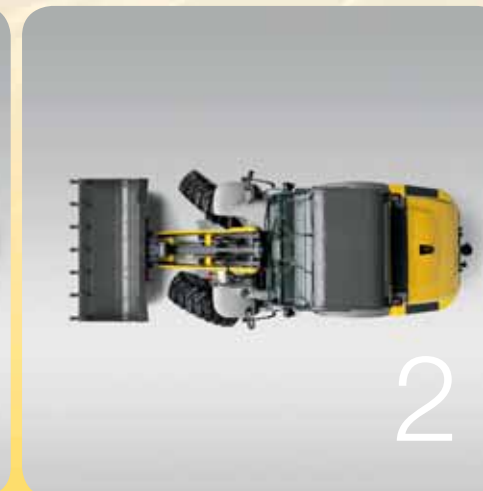
The tele wheel loaders are straightforward to operate, easy to drive and cost little to maintain. They are made for hard, sustained use and as such are built to suit with the following features:

- low kerb weight
- high fuel efficiency thanks to optimally balanced system components and intelligent engine and hydraulics management
- few fuel-intensive drive components when in operation, reduced consumption thanks to the manoeuvrability offered by the four-wheel steering
- time savings on service and maintenance
- long life cycle and high resale value as a German branded product.

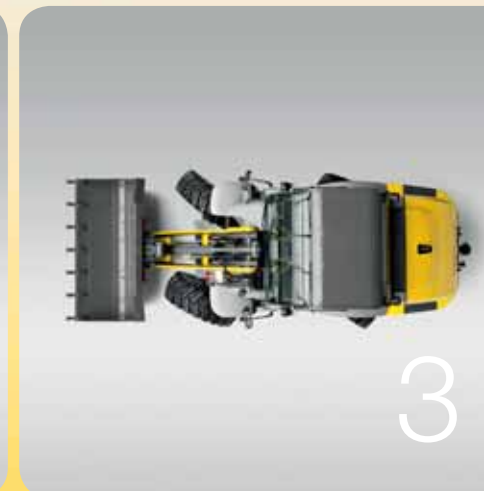
One-piece frame: The tried and tested backbone of all Kramer wheel loaders.



1



2



3

### 3 steering modes for best position-suited performance:

- 1 All-wheel steering from Kramer: total flexibility and power while turning on a sixpence.
- 2 Front-wheel steering: the feel of a towing vehicle and the sense of driving in complete safety.
- 3 Crab steering: precision control in the tightest of spots.



The pacemakers:  
Faster profits.  
Enormously flexible.  
Precisely tailored to requirements.

750T  
680T

**Kramer Ecospeed drive:**

- EU tractor standard for unlimited use on European roads.\*
- Stepless from 0–40 kph.
- Optional air brake unit for trailer loads of up to 14 tonnes.
- Minimal fuel consumption.
- Reduced noise emissions.



**750T**

The High-Speed Engine (option for the 750T) is designed for the speed range of 0–30 kph. It makes the machine even more flexible for deployment.



**680T**

Ecospeed® drive (optional on the 680T) is designed for the speed range of 0–40 kph. It enables maximum thrust and tractive force for the lowest engine speed. Economy and ecology are united:

- low fuel consumption
- reduced noise levels
- low thermal load



MAXIMUM PERMISSIBLE TRAILER LOADS*	without brake	with brake Kugelkopf	with brake automat. bar coupling	with brake automat. bar coupling with air brake unit
	<b>WHEEL LOADERS</b>			
<b>680T</b>	750 kg	3500 kg	8000 kg	14000 kg

\* The laws and regulations of the respective countries and regions must be respected.



## The Zoom Effect: New areas of deployment to focus on too. An entire album of utility.

**The parallel boom means that loads are always kept under control.** Always in the field of view, so that the load can be kept stable and work can proceed quickly and with precision. The high tilt-in/tilt-out angle means that no material is spilt, even with a full bucket. You can also be sure of an empty bucket every time, thanks to the maximum dump height of 4 m. When stacking, the load can be placed precisely and securely, with no need for subsequent adjustment. The perfect all-round view also offers safety enhancement.



- 1 For local authority landscape maintenance it offers real advantages: the combination of pruner and tele wheel loader means that even high branches can be reached.
- 2 Perfect for the recycling chain: the tele wheel loader is in its element working for recycling firms.
- 3 Efficient loading of high shelves, high-sided vehicles or other facilities: a special feature of the tele wheel loader.
- 4 Winter work for local authorities: whether as a snowplough, gritter or snow blower. Their long reach and wide range of accessories make Kramer tele wheel loaders the all-year all-rounders.



**Versatility means greater use. The more an item is used, the more it is of value. And the value shows.**

Investments are only worthwhile if they can increase work yield and contribute to better exploitation of existing resources. Kramer tele wheel loaders are not only versatile and highly reliable machines, but also intelligent and future-proof system bearers for the construction industry, local authorities, the recycling industry, gardening and landscaping, and hire firms.

They help improve work and logistics processes and grow into their specialist tasks. They ship international industry standards and easily adaptable performance profiles in cost-effective form.

**They grow with you. They get stronger. They are the image of what you need. They quickly become indispensable.**

- 5 Towing trailers in fast drive mode: the tele wheel loaders are not only full-fledged wheel loaders but are also effective towing vehicles.
- 6 Small roadworks jobs done in a jiffy: using the cold planer, road markings can be removed and ruts levelled out in no time at all. The necessary power for this comes from the Power Flow high-performance hydraulics.
- 7 The use of work platforms is only possible in compliance with the strictest safety standards: Kramer wheel loaders fulfil them all.





And now it's time for action:  
Rapid tool changes.  
Servicing in a trice.  
Quick and easy from the driver's cab.

750T  
680T

- 1 Simply drive up to the implement
- 2 Pick it up hydraulically from the driver's seat
- 3 Keeping visual contact, **secure or detach** at the touch of a button.



For 40 years the accessories for Kramer wheel loaders have been changed in an instant - and securely locked in place.

- Locking above the bucket pin height
- A Safety valve to prevent unwanted release
- Handling and permanent visual contact from the driver's cab
- An overload warning mechanism ensures safe operation and deployment.

Kramer tele wheel loaders are distinguished by a great balance of components, resulting in a versatile and compatible system that continually offers new and extra possibilities in terms of working conditions, applications and – not least – fuel savings.

- Optimized power to weight ratio
- Low transport weight
- Constant high payload
- Full compatibility to all attachments (including the classic Kramer wheel loader)



- 1 Power with intelligence: an engine cover that opens wide, offering easy access to all important elements. Well-protected rear light assembly.
- 2 Inviting, practical and safe all year round: Low, comfortable and non-slip access (680T: on both sides) thanks to the generously-dimensioned ROPS-certified cab. The FOPS-II protective screen and overload warning mechanism are fitted as standard on all tele wheel loaders for maximum safety and security.





# The shooting stars: Each one a character. Each one leading the way.

The well-appointed cab of the 750T is laid out for ease of operation. The switches are ergonomically arranged and the controls intuitively positioned. The neat cockpit is extremely robust and accessible by means of a wide, non-slip entrance step.



- 1 Lots of room, great visibility: perfect all-round views and a well-appointed workspace. The instruments are colour-coded so that the driver can see all functions at a glance.
- 2 The adjustable seats and steering column ensure that each Kramer model of the 80 Series is a genuinely individual machine.
- 3 Multifunction joystick with integrated function lighting. The driver can always keep one hand on the steering wheel.

#### HYDRAULICS

#### DRIVE

#### ELECTRICS

#### SAFETY & SECURITY



#### 750T:

##### ... focusing on the essentials

- maximum lift height, reach and payload
- maximum wheel loader power
- maximum stability
- maximum manoeuvrability
- maximum safety

#### 680T:

##### ... with those special extras

- extra comfort
- extra options
- extra flexibility
- extra power for tool attachments
- extra capacity as a towing vehicle



# High-Tech focus: State-of-the-art manufacturing. Kramer-inspired quality. A success story.

ALL KRAMER LOADERS COME OFF THE PRODUCTION LINE OF A LEADING COMPACT MACHINERY MANUFACTURER BASED IN THE HEART OF EUROPE. THEY BEAR THE HALLMARK OF QUALITY, STABILITY AND CONSISTENCY THAT YOU CAN RELY ON: TYPICALLY "MADE IN GERMANY". EVERY MODEL IS BUILT TO LAST AND IS A MODULAR ELEMENT OF AN OVERALL SYSTEM.

**ONE PART FITS INTO ANOTHER, AND EVERYTHING IS FUTURE-PROOFED, FOR LONG-TERM COST-EFFECTIVENESS.**

MÜNCHEN  
Pfullendorf



	Max. engine output	Bucket capacity	Max. payload	Weight	Turning radius (Tyres)	Max. speed	Max. load-over height
<b>MINI-LOADERS</b>							
<b>250 ROPS</b>	16 kW / 22 PS	0,25–0,45 m <sup>3</sup>	850 kg	1540 kg	1950 mm	0–20 km/h	2680 mm
<b>350 ROPS</b>	27 kW / 37 PS	0,35–0,55 m <sup>3</sup>	970 kg	1620 kg	1950 mm	0–20 km/h	2680 mm
<b>350 CAB</b>	27 kW / 37 PS	0,35–0,55 m <sup>3</sup>	970 kg	1720 kg	1950 mm	0–20 km/h	2680 mm
<b>180</b>	23 kW / 31 PS	0,3–0,4 m <sup>3</sup>	950 kg	1860 kg	1940 mm	0–20 km/h	2458 mm
<b>280</b>	28 kW / 40 PS	0,65–1,1 m <sup>3</sup>	1900 kg	3300 kg	2430 mm	0–20 km/h	2820 mm
<b>WHEEL LOADERS</b>							
<b>750</b>	45 kW / 61 PS	0,75–1,15 m <sup>3</sup>	2300 kg	4200 kg	2550 mm	0–30 km/h	2915 mm
<b>850</b>	45 kW / 61 PS	0,85–1,3 m <sup>3</sup>	2350 kg	4500 kg	2550 mm	0–30 km/h	3100 mm
<b>950</b>	58 kW / 79 PS	0,95–1,6 m <sup>3</sup>	2500 kg	4700 kg	2780 mm	0–30 km/h	3120 mm
<b>1150</b>	58 kW / 79 PS	1,15–1,8 m <sup>3</sup>	3500 kg	5900 kg	2850 mm	0–30 km/h	3235 mm
<b>380</b>	45 kW / 61 PS	0,75–1,15 m <sup>3</sup>	2400 kg	4300 kg	2900 mm	0–40 km/h	2915 mm
<b>480</b>	58 kW / 79 PS	0,85–1,3 m <sup>3</sup>	2600 kg	4750 kg	2900 mm	0–40 km/h	3100 mm
<b>580</b>	58 kW / 79 PS	0,95–1,5 m <sup>3</sup>	2750 kg	4900 kg	2900 mm	0–40 km/h	3050 mm
<b>680</b>	58 kW / 79 PS	1,05–1,6 m <sup>3</sup>	3100 kg	5650 kg	2950 mm	0–40 km/h	3050 mm
<b>780</b>	58 kW / 79 PS	1,15–1,8 m <sup>3</sup>	3500 kg	6100 kg	2950 mm	0–35 km/h	3200 mm
<b>880</b>	88 kW / 120 PS	1,5–2,5 m <sup>3</sup>	4500 kg	8400 kg	3450 mm	0–35 km/h	3530 mm
<b>TELE WHEEL LOADERS</b>							
<b>750T</b>	45 kW / 61 PS	0,75–1,2 m <sup>3</sup>	2000 kg	5100 kg	2550 mm	0–30 km/h	4510 mm
<b>680T</b>	58 kW / 79 PS	0,95–1,6 m <sup>3</sup>	2600 kg	5950 kg	2850 mm	0–40 km/h	4450 mm
<b>COMPACT TELEHANDLERS</b>							
<b>1245</b>	23 kW / 31 PS	0,4–1,03 m <sup>3</sup>	1200 kg	2530 kg	2607 mm	0–20 km/h	4130 mm
<b>2506</b>	50 kW / 68 PS	0,85–1,8 m <sup>3</sup>	2500 kg	4300 kg	3500 mm	0–30 km/h	5730 mm
<b>TELEHANDLERS</b>							
<b>3307</b>	88 kW / 120 PS	1,2–2,5 m <sup>3</sup>	3300 kg	7200 kg	3600 mm	0–40 km/h	7050 mm
<b>4507</b>	88 kW / 120 PS	1,2–3,0 m <sup>3</sup>	4400 kg	8100 kg	3600 mm	0–40 km/h	7050 mm
<b>4009</b>	88 kW / 120 PS	1,2–3,0 m <sup>3</sup>	4000 kg	8600 kg	3850 mm	0–40 km/h	8825 mm



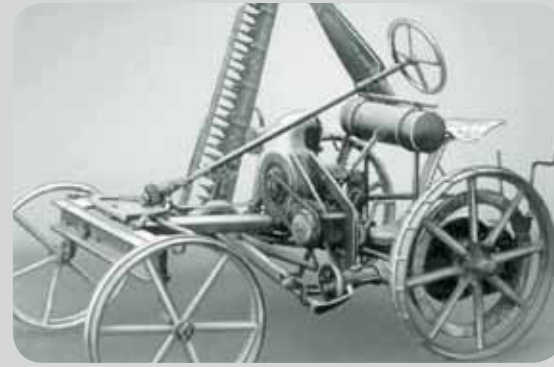
# Innovation born of tradition:

Robust program.  
State-of-the-art  
manufacturing.  
Competent  
partners.

High Balanced  
Handling®

Genuine competence only becomes established when know-how, ability and customer-orientation have been consolidated over many years to become a distinctive style. The success story of Kramer is telling proof of this adage:

- **Over 50 years of experience in the development, design and production of intelligent, durable and versatile construction machinery.** Structures that have grown organically.
- **Innovation bringing progress to life.** Kramer constantly strives to make things work better. This is how the brand has become the acknowledged pioneer and market leader that it is today.
- **Consistent customer orientation, personal contacts,** the flexibility and short decision pathways of a medium-sized enterprise, along with the security of guaranteed and rapid spare parts procurement with no red tape.
- **A broad one-stop product and service spectrum:** "Made in Germany", in the Bodensee region. Development, production, purchasing and sales all on one site.
- **The most up-to-date manufacturing facilities with in-house paint shop** and an experienced workforce, who personally invest a great deal of value in the quality of "their machines".
- **Robust, long-standing trading partners** and well-trained contacts who represent Kramer out of conviction and for whom one thing counts above all else: loyal and contented customers.



1925 Founding of the company as a manufacturer of motor mowers.  
1963 Kramer is the first manufacturer to present a hydraulic quick-hitch mechanism.

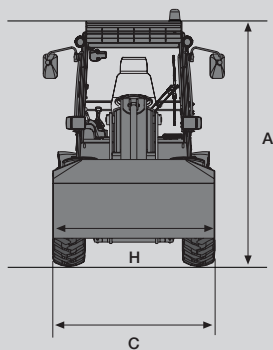
1965 The innovative load stabiliser for the boom arm is developed by Kramer engineers.  
1987 The first all-wheel-steering wheel loader is launched on the market. The steering system continues to be found in all Kramer vehicles.

1992 In order to satisfy customer requirements, Kramer develops a wheel loader with telescopic boom. The extra pallet height and reach give customers what they were looking for.  
2000 The Neuson and Kramer companies merge to become Neuson Kramer Baumaschinen AG, a company specialising in the development and manufacturing of compact machinery.

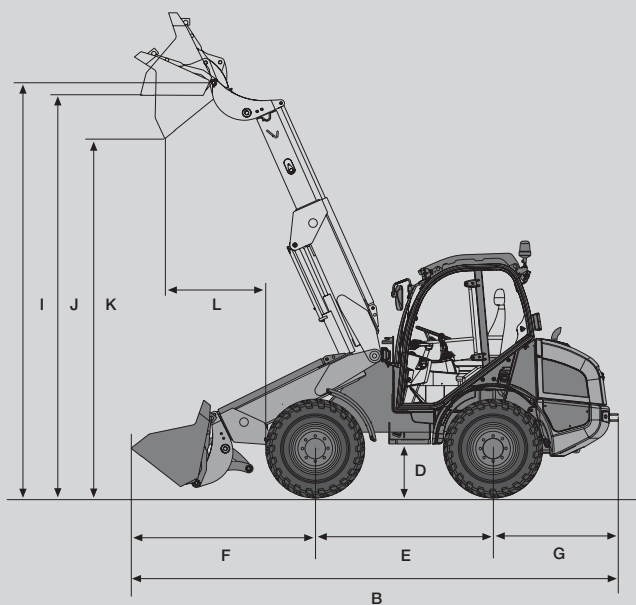
2003 Kramer presents the first wheel loader series with stepless high-speed drive ("Ecospeed") and highway-certified trailer coupling.  
2005 A new vehicle segment – the telehandler – is developed and unveiled. Through cooperation with the agricultural machinery manufacturer, Claas, telehandlers are successfully marketed to the agricultural sector.

2007 A new company is born: Neuson Kramer Baumaschinen AG and Wacker Construction Equipment AG come together to form Wacker Neuson SE, a comprehensive provider of Light and Compact Equipment.  
2008 Due to increasing demand and the expansion of the product range, Kramer builds a new factory from scratch in Pfullendorf. This is one of the most up-to-date manufacturing sites in Europe.

# Close-up: Focus on the vital statistics.



With standard bucket and standard tyres  
(front view)



With standard bucket and standard tyres

## DIMENSIONS

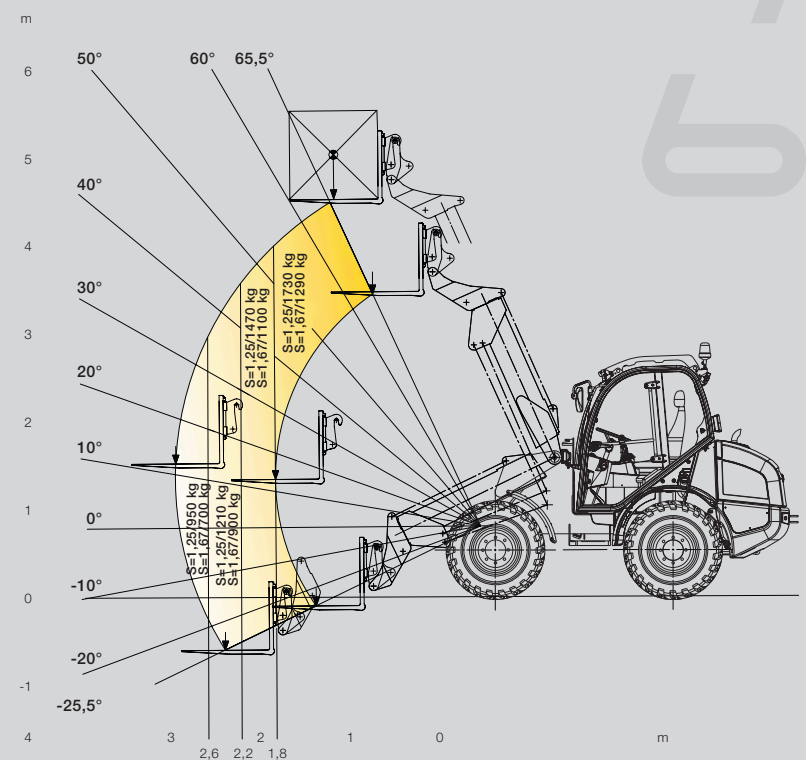
	750T	680T
A Height	2580 mm	2750 mm
B Length	5500 mm	6040 mm
C Width	1720 mm	1920 mm
D Ground clearance	300 mm	350 mm
E Wheelbase	1920 mm	2150 mm
F Centre of front axle to tip of teeth	2230 mm	2270 mm
G Centre of rear axle to end of vehicle	1350 mm	1620 mm
H Bucket width	1750 mm	1950 mm
I Pin height	3585 / 4660* mm	3630 / 4680* mm
J Load-over height	3435 / 4510* mm	3400 / 4450* mm
K Dump height	3000 / 4000* mm	2930 / 4000* mm
L Dump reach	760 / 1230* mm	640 / 1100* mm
Pallet height	3360 / 4440* mm	3460 / 4500* mm

\* extended

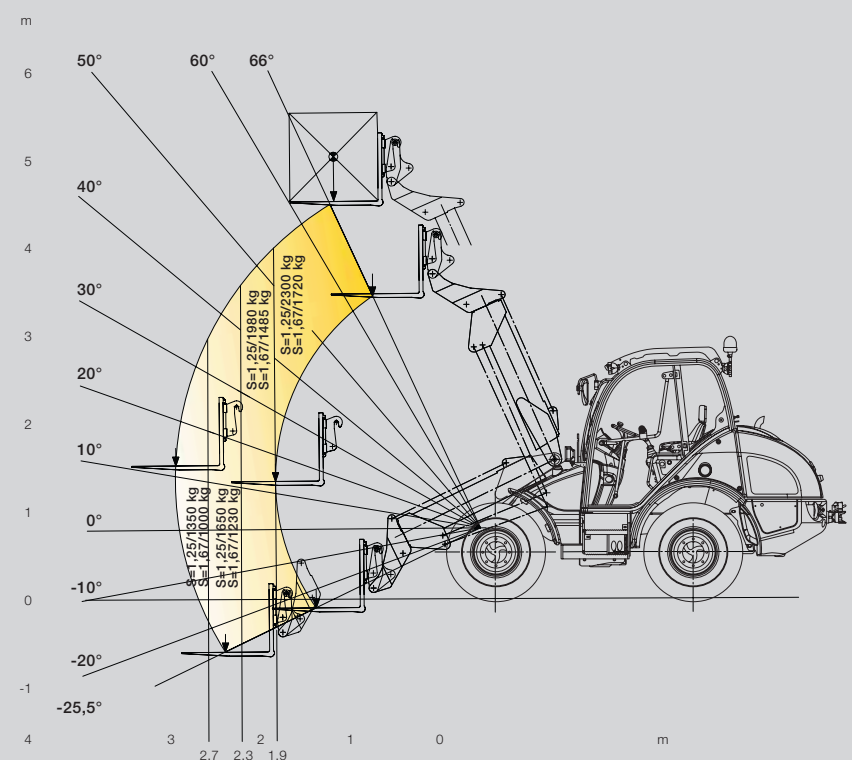


Versatility in tune with  
the times. At any time.  
All year round.

# 750T 680T



Load diagram  
750T



Load diagram  
680T

	750T	680T
<b>OPERATIONAL DATA</b>		
Bucket capacity	0.75 – 1,2 m <sup>3</sup>	0.95 – 1.5 m <sup>3</sup>
Weight	5100 kg	5950 kg
Turning radius Tyres	2550 mm	3110 mm
<b>ENGINE</b>		
Make / Type / Model	Deutz D 2011 L04 W in-line diesel engine	Deutz D 2011 L04 W in-line diesel engine
Output	45 kW / 61 hp at 2300 rpm	58 kW / 79 hp at 2300 rpm
Max. torque	210 Nm at 1700 rpm	270 Nm at 1600 rpm
Engine displacement	3619 cm <sup>3</sup>	3619 cm <sup>3</sup>
Emissions	tested and certified as per 97/68EC, emissions standard level 3a	
<b>POWER TRANSMISSION</b>		
Drive	continuously variable hydrostatic axial-piston gearbox, 4-wheel drive, brake/inching pedal	
Drive speed	0 – 20 kph 0 – 30 kph (optional)	0 – 20 kph 0 – 30 kph (optional) 0 – 40 kph (optional)
Axles	Planetary steering axles	
Total oscillation angle	22°	
Differential lock in front and rear axles	Self-locking differential	
Service brake	foot pedal operated hydraulic disc brake	
Parking brake	hand-operated mechanical disc brake	
Standard tyres	12.5-18	14.5-20
<b>STEERING AND WORK HYDRAULICS</b>		
Mode of operation	hydrostatic all-wheel steering with emergency steering properties	
Steering pump	Work pump via priority valve	
Steering ram	Double-acting, with automatic synchronization in final position	Double-acting, with automatic synchronization
Max. steering angle	2 x 40°	
Work pump	Gear pump	
Flow rate	74 l/min	84 l/min
Pressure	210 bar	240 bar
Filter	Combined suction reflux filter	
Pressure limitation	Primary pressure limitation, secondary pressure in tilt ram/lift ram	
<b>KINEMATICS</b>		
Model	Telescopic boom with z-kinematics	
Lifting capacity	30 kN	31 kN
Tear-out force	49 kN	46 kN
Tilt-in/tilt-out angle	40° / 40°	
Tipping load (standard bucket)	2700 kg	3500 kg
Tipping load (pallets)	2160 kg	2510 kg
Payload at max. lift height S = 1.25 kg (pallets)	1730 kg	2300 kg
Payload at max. lift height S = 1.67 kg (pallets)	1290 kg	1720 kg
Payload in transport position S = 1.25 kg (pallets)	2000 kg	2600 kg
Scraping depth	80 mm	50 mm
<b>CAPACITIES</b>		
Fuel tank	60 l	120 l
Hydraulic fluid tank	50 l	50 l
<b>NOISE EMISSIONS</b>		
as per 2000/14/EC		
<b>ELECTRIC SYSTEM</b>		
Operating voltage	12 V	12 V
Battery	72 Ah	88 Ah
Alternator	95 A	95 A
Starter	2,3 kW	2,3 kW