

CORMACH



575000

AXO E



עותמאן חסן ובניו בע"מ
052 5601111

www.cormach.com

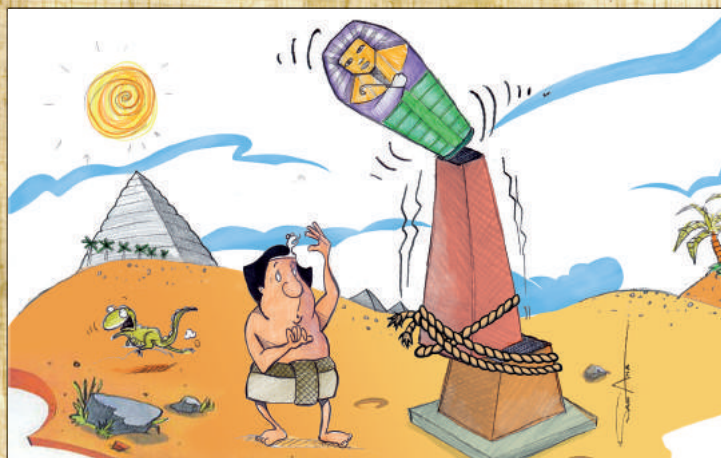
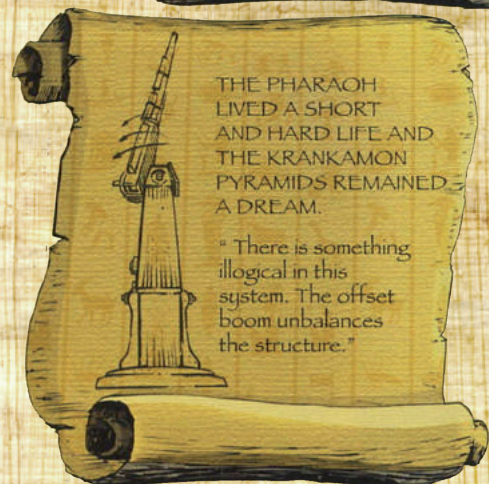
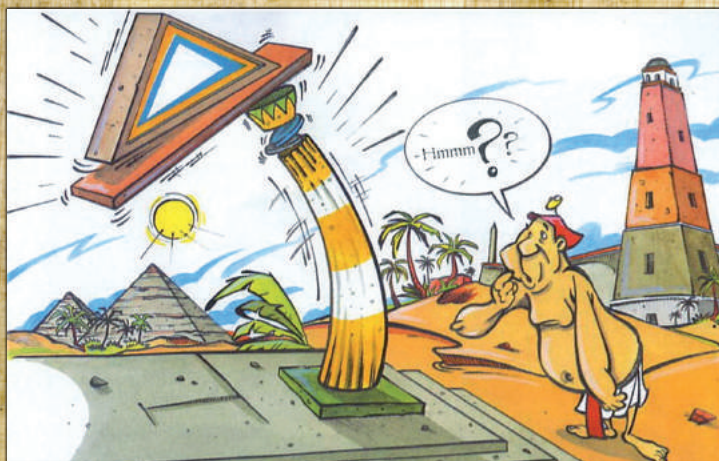
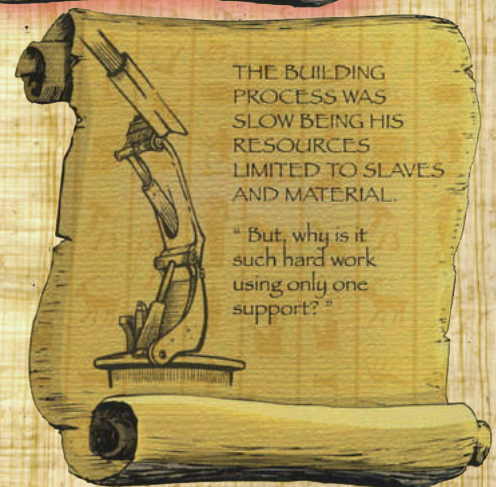
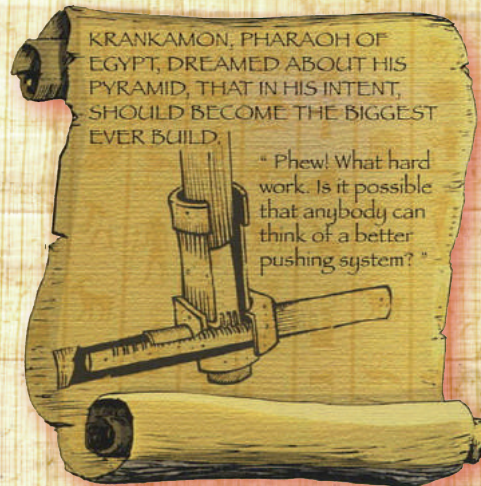
GORMACH

575000A **XO** E

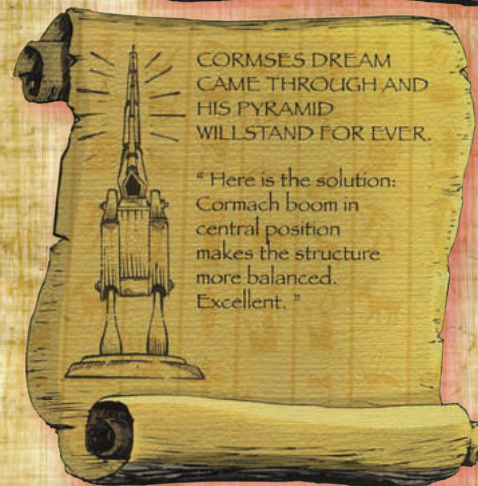
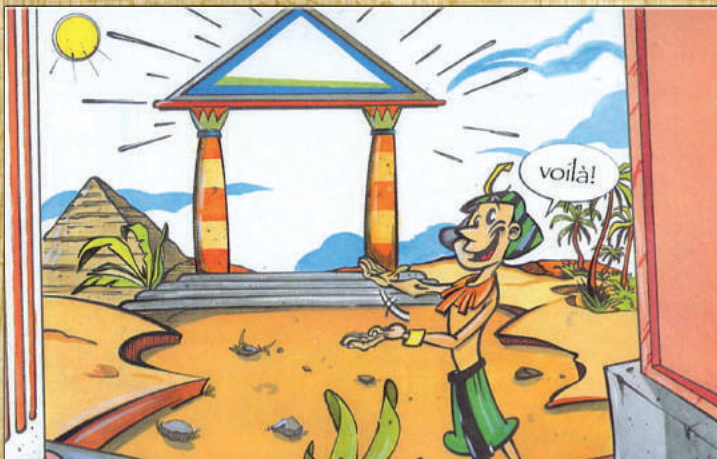




... ABOUT ANCIENT



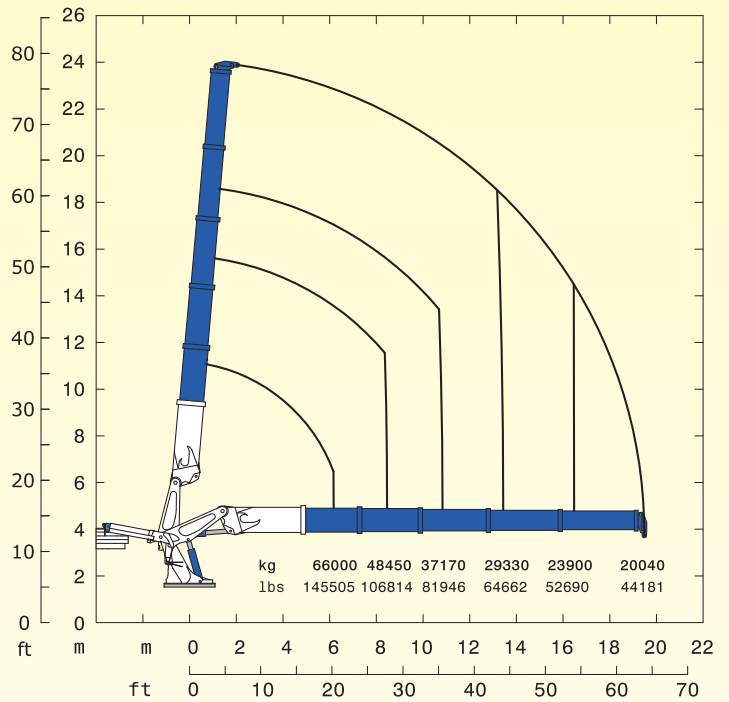
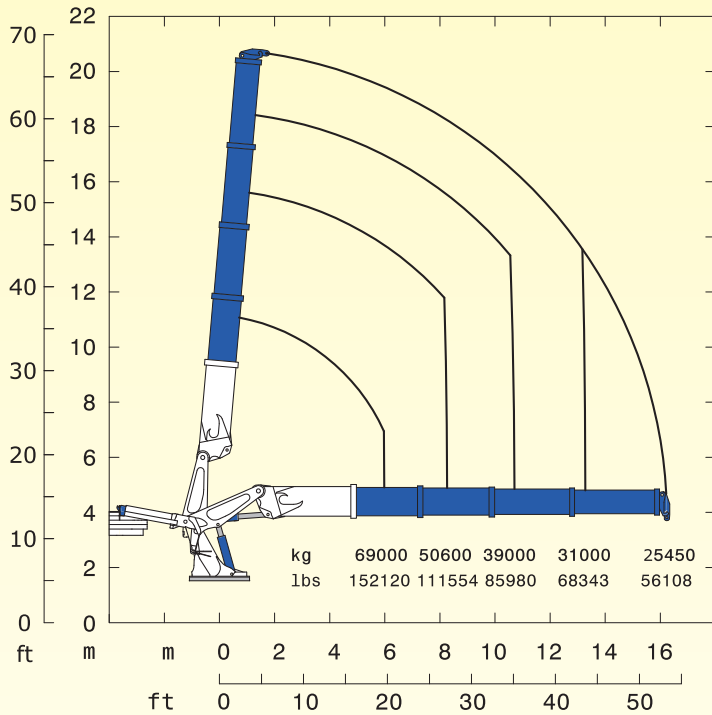
EGYPT MANUSCRIPTS



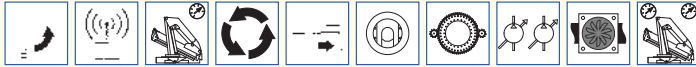
575000A χ O E

575000A χ O E4

575000A χ O E5



STANDARD



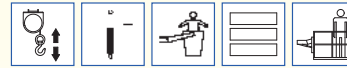
OPTIONAL



STANDARD



OPTIONAL



NOTA: Le portate delle versioni E4, E5, E6, ed E7 valgono solo per gru senza predisposizione per il JIB.

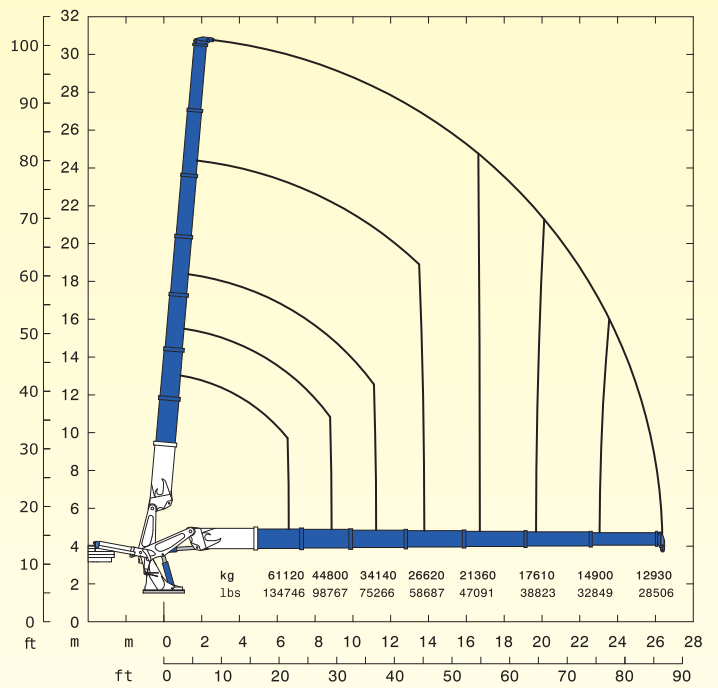
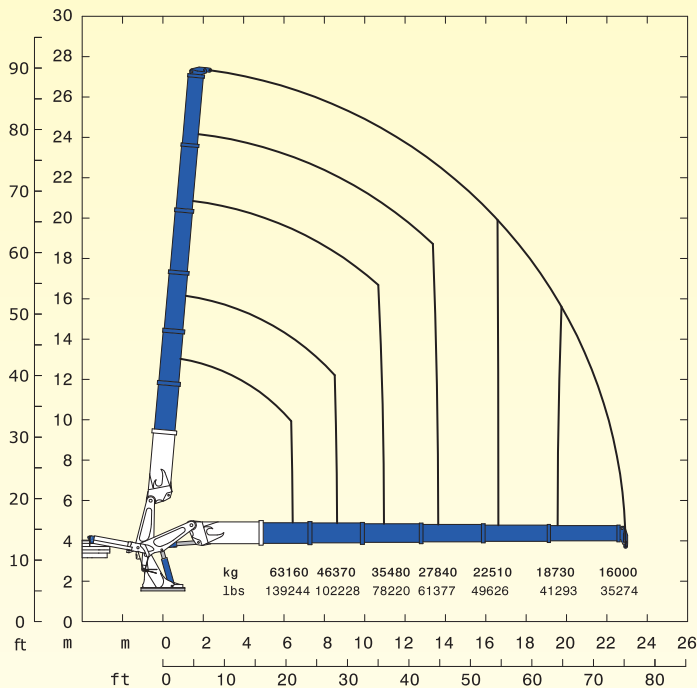
NOTE: The lifting capacities of the version E4, E5, E6 and E7 are valid only for cranes without JIB predisposal.

NOTE: Les capacités de levage des versions E4, E5, E6 et E7 sont valables seulement pour grues sans predisposition JIB.

E4	E4		E5	E5
515000 daN*m	3725715 Lb*ft	Momento statico massimo al perno torretta • Max. static moment at the turret pin Moment statique max. a l'axe de la tourelle • Max. statisches ubmoment am kransaulenbolzen	515000 daN*m	3725715 Lb*ft
16.14 m	52' 11"	Sbraccio idraulico • Hydraulic boom length Longueur du bras hydraulique • Hydraulic reichweite	19.38 m	63' 7"
		Sbraccio con prolunghe manuali • Bomm length with manual extensions Longueur du bras avec rallonges manuelles		
33270 daN*m	240688 Lb*ft	Coppia di rotazione • Slew torque • Moment de rotation • Drehmoment	33270 daN*m	240688 Lb*ft
73 s 360°	73 s 360°	Tempo di rotazione • Slewing speed • Temp de rotation • Schwenkgeschwindigkeit	73 s 360°	73 s 360°
3150+3150 mm 5200+5200 mm	10' 4" + 10' 4" 17' 1" + 17' 1"	Uscita stabilizzatori • Outriggers extensions Sortie des bequilles • Breite der abstützung	3150+3150 mm 5200+5200 mm	10' 4" + 10' 4" 17' 1" + 17' 1"
12340 mm	40' 6"	Larghezza stabilizzatori • Outriggers width Largeur des bequilles • Breite der abstützung	12340 mm	40' 6"
10530 mm	34' 7"	Lunghezza • Length • Longueur • Länge	10530 mm	34' 7"
2548 mm	8' 4"	Larghezza • Width • Largeur • Breite	2548 mm	8' 4"
2880 mm	9' 5"	Altezza • Height • Hauteur • Höhe	2880 mm	9' 5"
39590 kg	87281 lbs	Peso (senza olio e montaggio) • Weight (without oil and fitting) Poids (sans huile et montage) • Gewicht (ohne öl und ohne)	40980 kg	90345 lbs
120+110 l/min	31+29 us gal/min	Portata pompa (*) • Pump delivery (*) • Capacité de la pompe (*) • Pumpenheistung (*)	120+110 l/min	31+29 us gal/min
330 bar	4692 psi	Pressione • Pressure • Pression • Druck	330 bar	4692 psi
1250 l	330 us gal	Capacità serbatoio olio • Oil tank capacity • Capacité de reservoir d'huile • Öl tank inhalt	1250 l	330 us gal

575000AXO E6

575000AXO E7



STANDARD



OPTIONAL



STANDARD



OPTIONAL

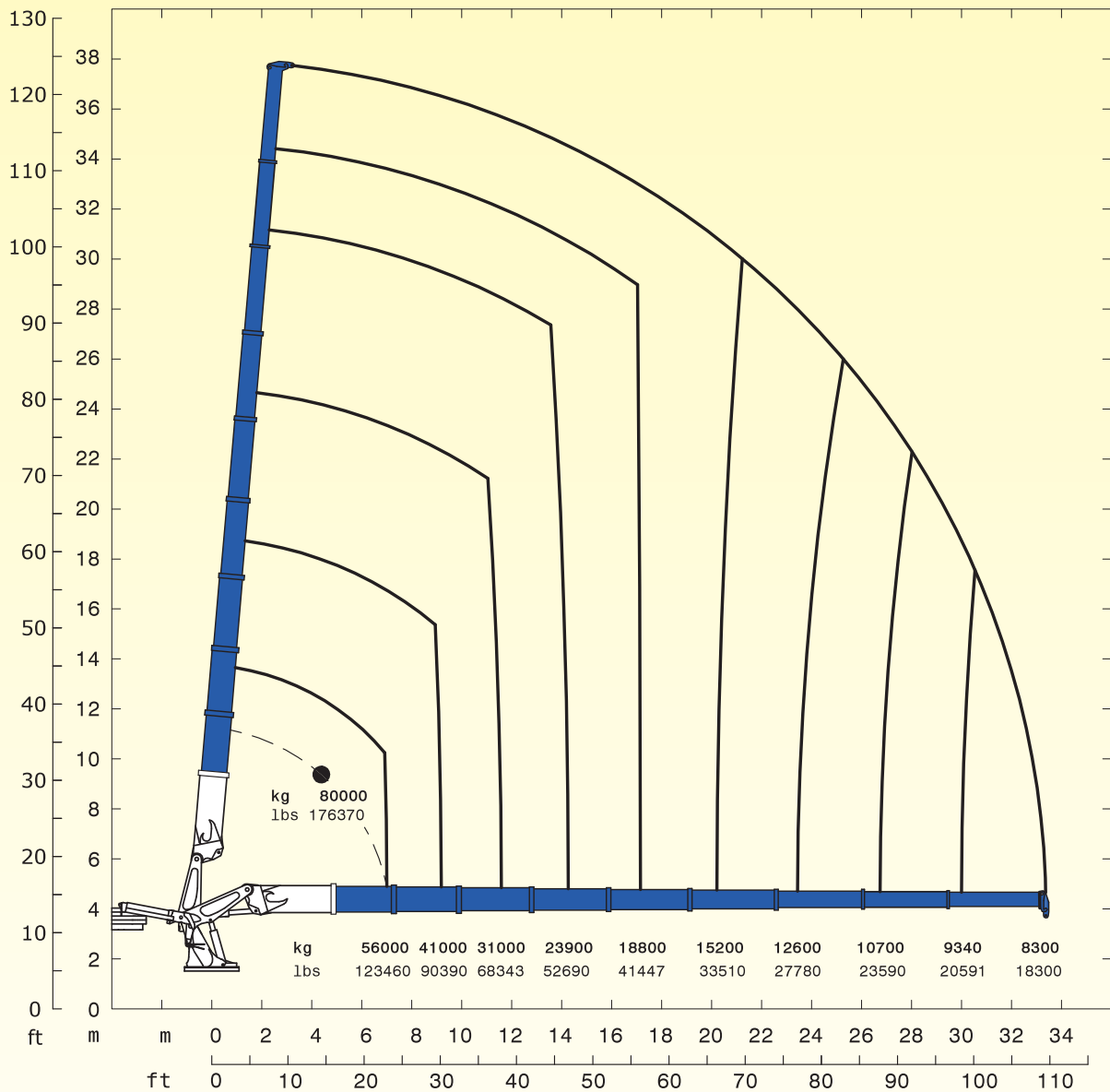


NOTA: Le portate delle versioni E4, E5, E6, ed E7 valgono solo per gru senza predisposizione per il JIB.

NOTE: The lifting capacities of the version E4, E5, E6 and E7 are valid only for cranes without JIB predisposal.

NOTE: Les capacités de levage des versions E4, E5, E6 et E7 sont valables seulement pour grues sans predisposition JIB.

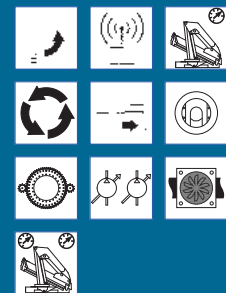
E6	E6		E7	E7
515000 daN*m	3725715 Lb*ft	Momento statico massimo al perno torretta • Max. static moment at the turret pin Moment statique max. a l'axe de la tourelle • Max. statisches ubmoment am kransaulenbolzen	515000 daN*m	3725715 Lb*ft
22.84 m	74' 11"	Sbraccio idraulico • Hydraulic boom length Longueur du bras hydraulique • Hydraulic reichweite	26.30 m	86' 3"
		Sbraccio con prolunghe manuali • Bomm length with manual extensions Longueur du bras avec rallonges manuelles		
33270 daN*m	240688 Lb*ft	Coppia di rotazione • Slew torque • Moment de rotation • Drehmoment	33270 daN*m	240688 Lb*ft
73 s 360°	73 s 360°	Tempo di rotazione • Slewing speed • Temp de rotation • Schwenkgeschwindigkeit	73 s 360°	73 s 360°
3150+3150 mm 5200+5200 mm	10' 4" + 10' 4" 17' 1" + 17' 1"	Uscita stabilizzatori • Outriggers extensions Sortie des bequilles • Breite der abstützung	3150+3150 mm 5200+5200 mm	10' 4" + 10' 4" 17' 1" + 17' 1"
12340 mm	40' 6"	Larghezza stabilizzatori • Outriggers width Largeur des bequilles • Breite der abstützung	12340 mm	40' 6"
10530 mm	34' 7"	Lunghezza • Length • Longueur • Länge	10530 mm	34' 7"
2548 mm	8' 4"	Larghezza • Width • Largeur • Breite	2548 mm	8' 4"
2880 mm	9' 5"	Altezza • Height • Hauteur • Höhe	2880 mm	9' 5"
42280 kg	93211 lbs	Peso (senza olio e montaggio) • Weight (without oil and fitting) Poids (sans huile et montage) • Gewicht (ohne öl und ohne)	43360 kg	95592 lbs
120+110 l/min	31+29 us gal/min	Portata pompa (*) • Pump delivery (*) • Capacité de la pompe (*) • Pumpenheistung (*)	120+110 l/min	31+29 us gal/min
330 bar	4692 psi	Pressione • Pressure • Pression • Druck	330 bar	4692 psi
1250 l	330 us gal	Capacità serbatoio olio • Oil tank capacity • Capacité de reservoir d'huile • Öl tank inhalt	1250 l	330 us gal



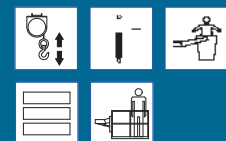
575000AXO E9

E9	E9	
515000 daN*m	3725715 Lb*ft	Momento statico massimo al perno torretta • Max. static moment at the turret pin Moment statique max. a l'axe de la tourelle • Max. statisches ubmoment am kranstaulenbolzen
33.45 m	109' 9"	Sbraccio idraulico • Hydraulic boom length Longueur du bras hydraulique • Hydraulic reichweite
		Sbraccio con prolunghe manuali • Bomm length with manual extensions Longueur du bras avec rallonges manuelles
33270 daN*m	240688 Lb*ft	Coppia di rotazione • Slew torque • Moment de rotation • Drehmoment
73 s 360°	73 s 360°	Tempo di rotazione • Slewing speed • Temp de rotation • Schwenkgeschwindigkeit
3150+3150 mm 5200+5200 mm	10' 4" + 10' 4" 17' 1" + 17' 1"	Uscita stabilizzatori • Outriggers extensions Sortie des bequilles • Breite der abstützung
12340 mm	40' 6"	Larghezza stabilizzatori • Outriggers width Largeur des bequilles • Breite der abstützung
10530 mm	34' 7"	Lunghezza • Length • Longueur • Länge
2548 mm	8' 4"	Larghezza • Width • Largeur • Breite
2880 mm	9' 5"	Altezza • Height • Hauteur • Höhe
45300 kg	99869 lbs	Peso (senza olio e montaggio) • Weight (without oil and fitting) Poids (sans huile et montage) • Gewicht (ohne öl und ohne)
120+110 l/min	31+29 us gal/min	Portata pompa (*) • Pump delivery (*) • Capacité de la pompe (*) • Pumpenleistung (*)
330 bar	4692 psi	Pressione • Pressure • Pression • Druck
1250 l	330 us gal	Capacità serbatoio olio • Oil tank capacity • Capacité de reservoir d'huile • Öl tank inhalt

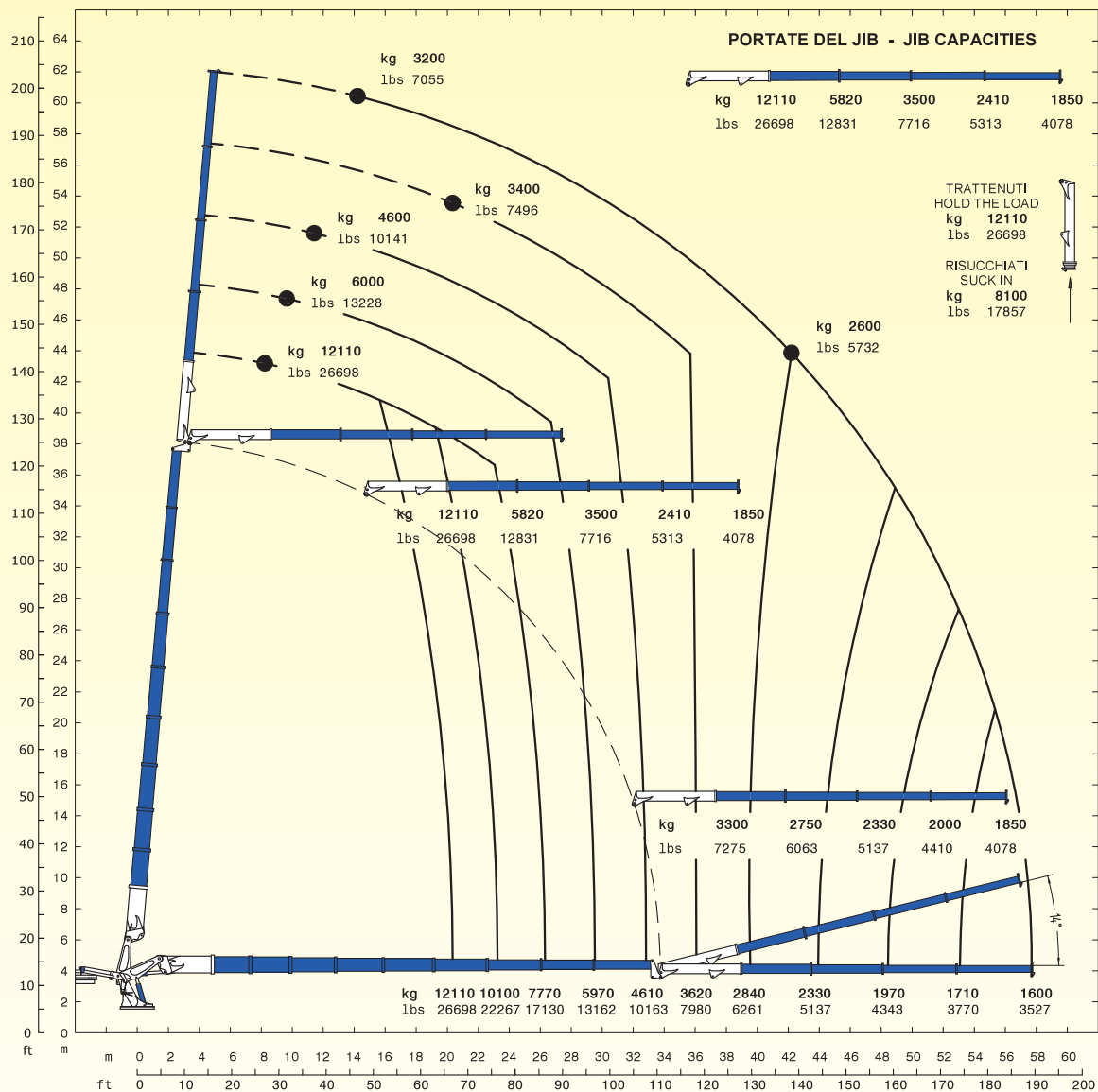
STANDARD



OPTIONAL



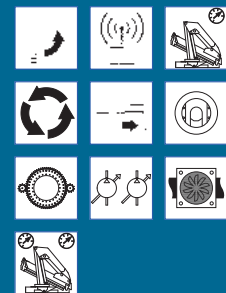
(*) Consigliata, (*) Recommended, (*) Reconnué, (*) Empfohlen.



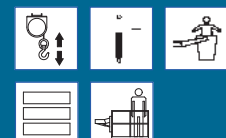
575000A^{XO} E9J804

E9J804	E9J804	
515000 daN*m	3725715 Lb*ft	Momento statico massimo al perno torretta • Max. static moment at the turret pin Moment statique max. a l'axe de la tourelle • Max. statisches ubmoment am kransaulenbolzen
57.84 m	189' 9"	Sbraccio idraulico • Hydraulic boom length Longueur du bras hydraulique • Hydraulic reichweite
		Sbraccio con prolunghe manuali • Bomm length with manual extensions Longueur du bras avec rallonges manuelles
33270 daN*m	240688 Lb*ft	Coppia di rotazione • Slew torque • Moment de rotation • Drehmoment
73 s 360°	73 s 360°	Tempo di rotazione • Slewing speed • Temp de rotation • Schwenkgeschwindigkeit
3150+3150 mm 5200+5200 mm	10' 4" + 10' 4" 17' 1" + 17' 1"	Uscita stabilizzatori • Outriggers extensions Sortie des bequilles • Breite der abstützung
12340 mm	40' 6"	Larghezza stabilizzatori • Outriggers width Largeur des bequilles • Breite der abstützung
10530 mm	34' 7"	Lunghezza • Length • Longueur • Länge
2548 mm	8' 4"	Larghezza • Width • Largeur • Breite
2880 mm	9' 5"	Altezza • Height • Huteur • Höhe
50450 kg	111223 lbs	Peso (senza olio e montaggio) • Weight (without oil and fitting) Poids (sans huile et montage) • Gewicht (ohne öl und ohne)
120+110 l/min	31+29 us gal/min	Portata pompa (*) • Pump delivery (*) • Capacité de la pompe (*) • Pumpenheistung (*)
330 bar	4692 psi	Pressione • Pressure • Pression • Druck
1250 l	330 us gal	Capacità serbatoio olio • Oil tank capacity • Capacité de reservoir d'huile • Öl tank inhalt

STANDARD

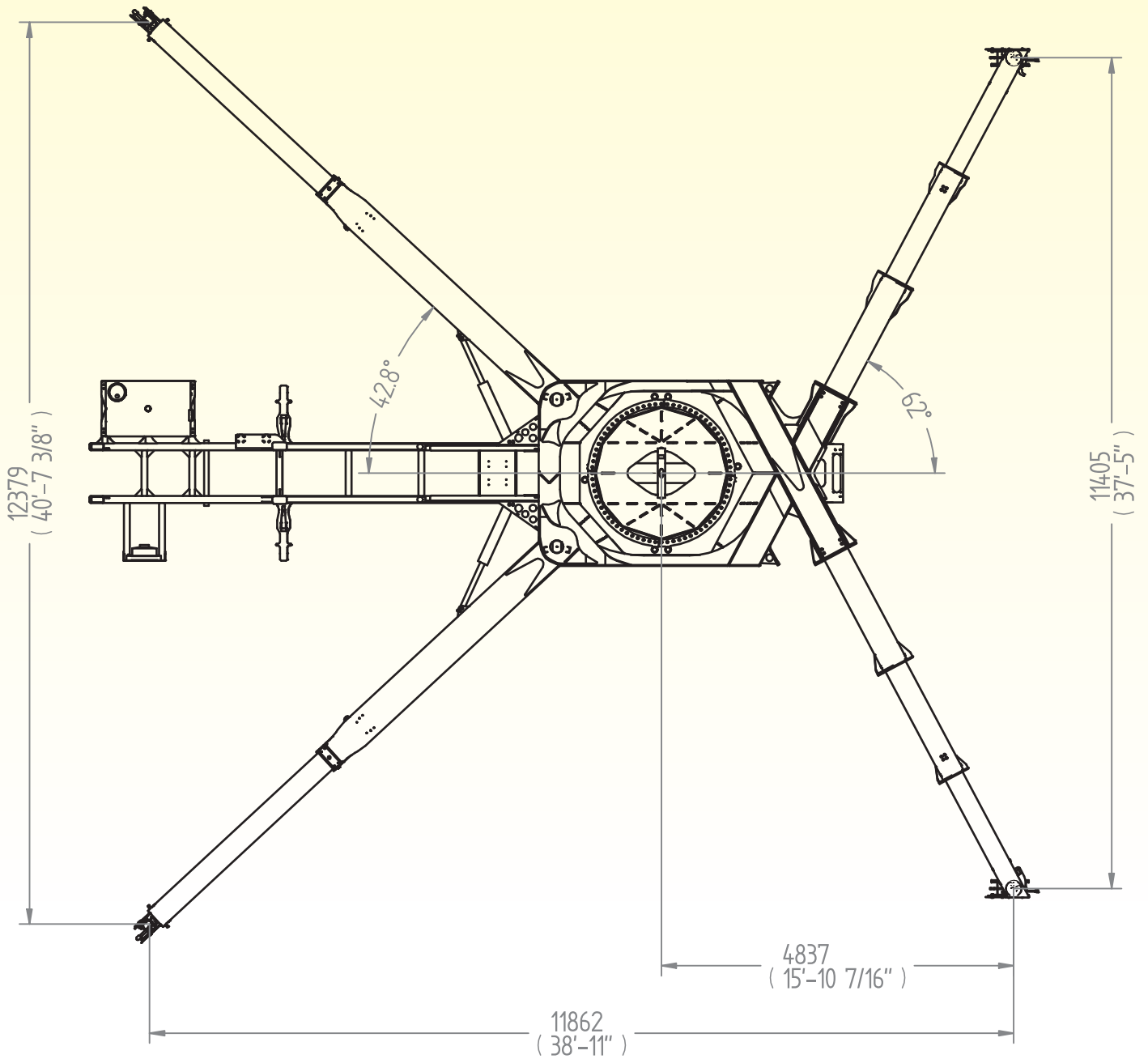
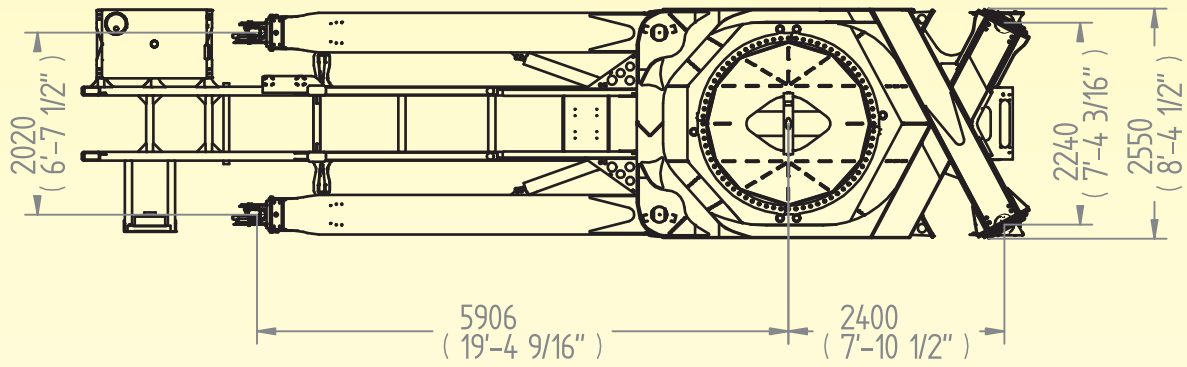


OPTIONAL



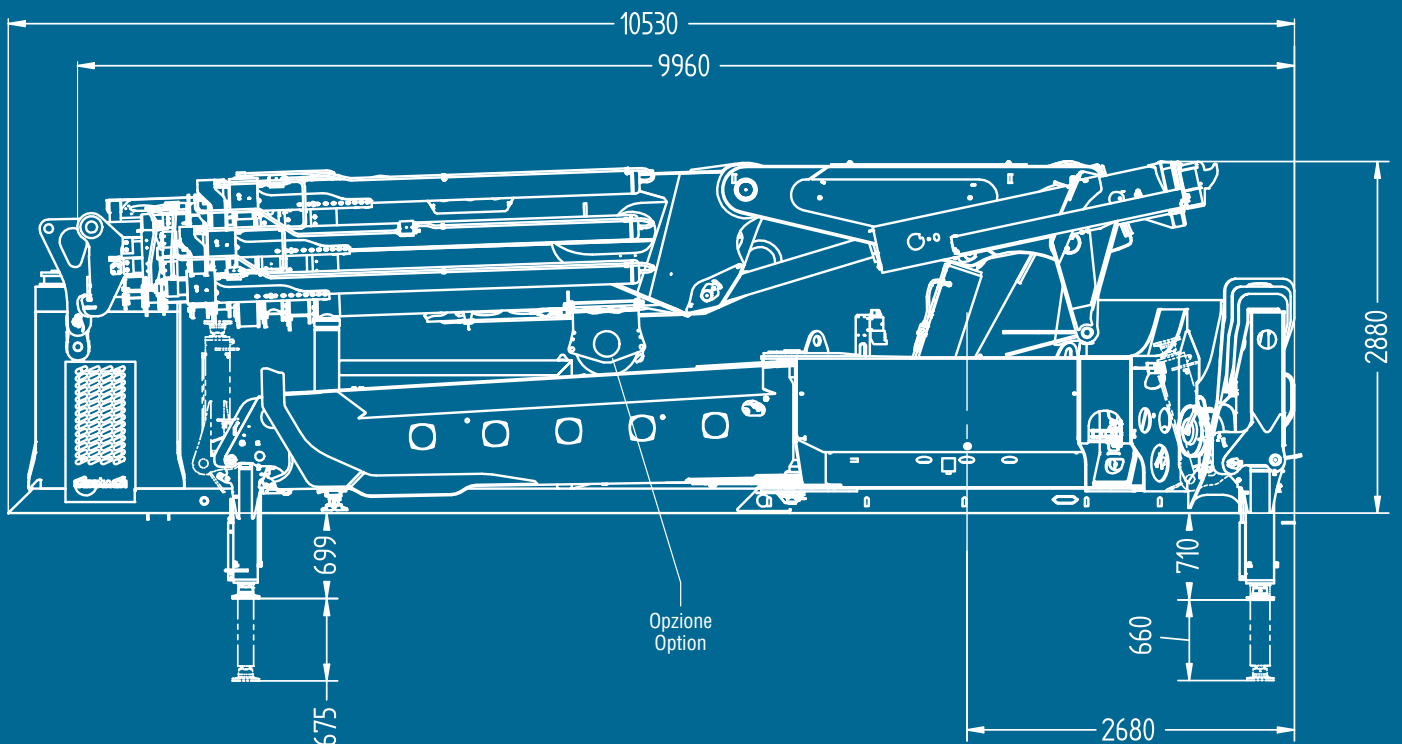
(*) Consigliata, (*) Recommended, (*) Reconnandé, (*) Empfohlen.

575000A **XO** E



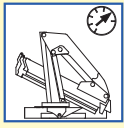
E4		E5		E6		E7		E9		E9J804	
m ft	kg lbs	m ft	kg lbs	m ft	kg lbs	m ft	kg lbs	m ft	kg lbs	m ft	kg lbs
5.98 19'7"	69000 152120	6.16 20'3"	66000 145505	6.38 20'11"	63160 139244	6.53 21'5"	61120 134746	7.00 23'0"	56000 123460	20.35 66'9"	12110 26698
8.17 26'10"	50600 111554	8.35 27'5"	48450 106814	8.57 28'1"	46370 102228	8.72 28'7"	44800 98767	9.18 30'1"	41000 90390	23.24 76'3"	10100 22267
10.57 34'8"	39000 85980	10.75 35'3"	37170 81946	10.97 36'0"	35480 78220	11.12 36'6"	34140 75266	11.58 38'0"	31000 68343	26.30 86'3"	7770 17130
13.25 43'6"	31000 68343	13.43 44'1"	29330 64662	13.65 44'9"	27840 61377	13.80 45'3"	26620 58687	14.26 46'9"	23900 52690	29.53 96'11"	5970 13162
16.14 52'11"	25450 56108	16.32 53'7"	23900 52690	16.54 54'3"	22510 49626	16.70 54'9"	21360 47091	17.15 56'3"	18800 41447	32.83 107'9"	4610 10163
		19.38 63'7"	20040 44181	19.60 64'4"	18730 41293	19.75 64'10"	17610 38823	20.21 66'4"	15200 33510	36.07 118'4"	3620 7980
				22.84 74'11"	16000 35274	23.00 75'6"	14900 32849	23.44 76'11"	12600 27780	39.54 129'9"	2840 6261
						26.30 86'3"	12930 28506	26.74 87'9"	10700 23590	43.93 144'2"	2330 5137
								30.00 98'5"	9340 20591	48.44 158'11"	1970 4343
								33.45 109'9"	8300 18300	53.08 174'2"	1710 3770
										57.84 198'9"	1600 3527

575000A~~XO~~ E9



575000A~~XO~~ E

STANDARD



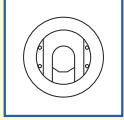
Limitatore di momento
Load limiting device
Limiteur de charge
Überlastabschaltungssystem



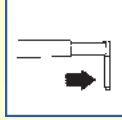
Rotazione continua
Continuous rotation
Rotation continue
Endlos schwenkwerk



Stabilizzatori gru base girevoli
Tilt up outriggers
Bequilles tournants
Drehbare stützen



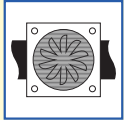
Piastre di appoggio maggiorate
Large ground plates
Plaques stabilisateurs
Bodenplatten



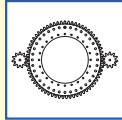
Stabilizzatori gru base estendibili idraulicamente
Outriggers with hydraulic
Stabilisateurs avec extension hydraulique
Hydraulisch ausfahrbare stützen



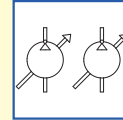
Radiocomando
Radio remote control
Radiocommandes
Funkfernsteuerung



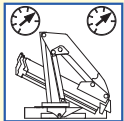
Scambiatore di calore
Oil cooler
Echangeur de chaleur
Ölkühler



Doppia rotazione
Double rotation
Rotation double
Umschiffer umdrehung

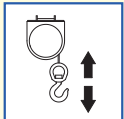


Doppia pompa a portata variabile
Double pump with load sensing
Double pompe à débit variable
Doppel verstellpumpe load sensing



Doppio limitatore di momento
Double load limiting device
Double limiteur de charge
Doppel Überlastabschaltungssystem

OPTIONAL



Verricello
Winch
Treuil
Seilwinde



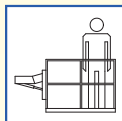
Trattamento marino della gru
Marine treatment of the crane
Traitement marine de la grue
Marine behandlung des kranes



Cestello
Basket
Nacelle
Personnenkorb

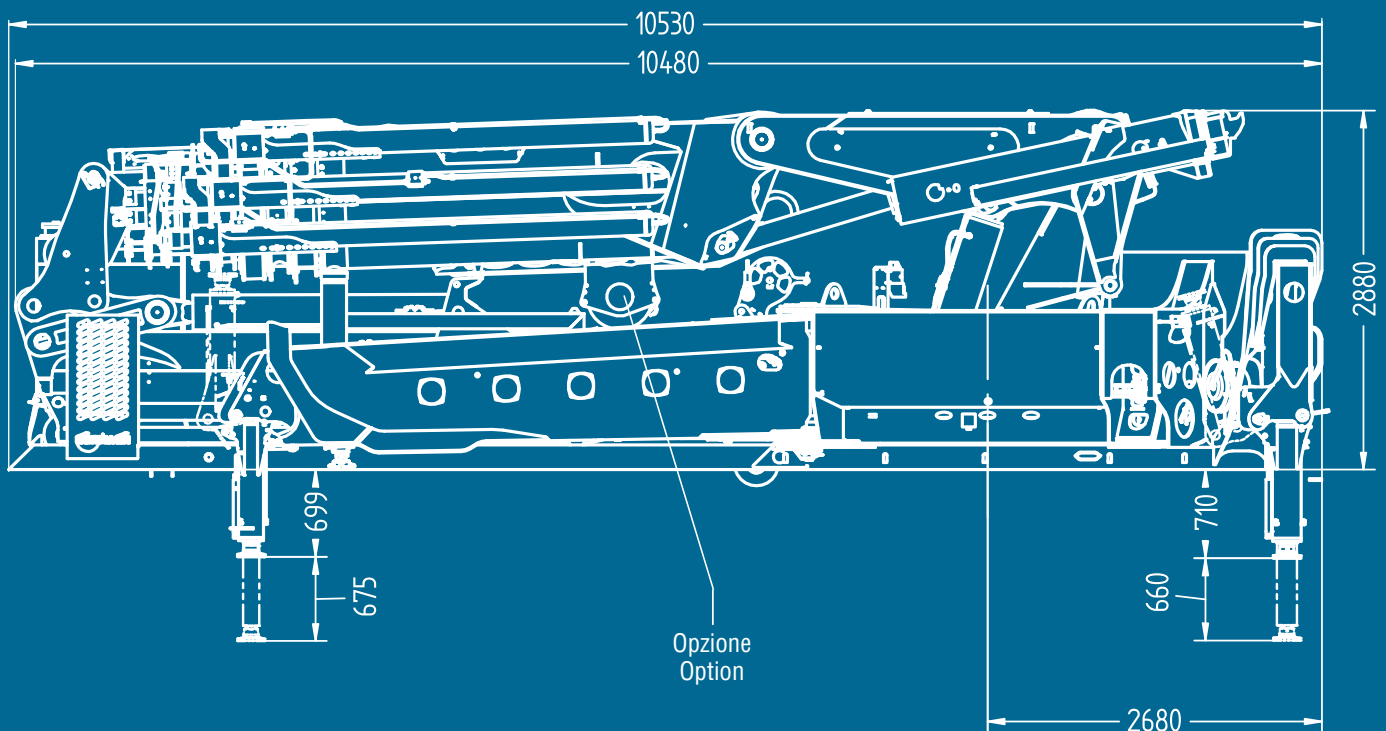


Zavorra
Counterweight
Lest
Ballast



Piattaforma autolivellante
Self leveling platform
Plateforme auto nivelante
Arbeitskorb mit automatische Ausgleich Anlage

575000A~~XO~~ E9J804



GORMAGH

575000A X O E



GORMAGH

575000A X O E



GORMAGH

575000A X O E





CORMACH

Cormach s.r.l. - Via Madonnina, 27 - C.P. 199 - 25018 MONTICHIARI (BS) - ITALY
Tel. 0039.030.9656811 - Telefax 0039.030.9656846.7.8
E-mail: info@cormach.com - www.cormach.com

A fronte di una continua ricerca tecnologica i dati possono cambiare senza preavviso. Contattare il nostro Ufficio Commerciale per ulteriori informazioni.
Because of continuous technology research data can change without notice. Please, contact our Commercial Dept. for further information.
A cause de une continue recherche technologique les données peuvent changer sans préavis. Contacter notre Bureau Commercial pour des autres informations.
Irrtum und technische Änderung vorbehalten masse und gewichte unverbindlich. Unser Vertrieb erteilt Ihnen gerne weitere Auskünfte. Bitte rufen Sie uns an.
Debido a los continuos avances tecnológicos los datos pueden variar sin notificación previa. Para más información rogamos contacten nuestro Departamento Comercial.