



50 D

Diesel self-propelled crane with on-board operator

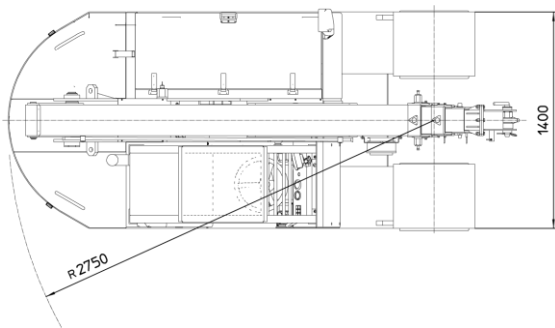
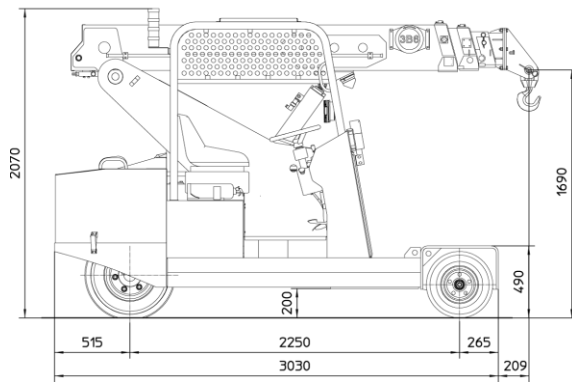
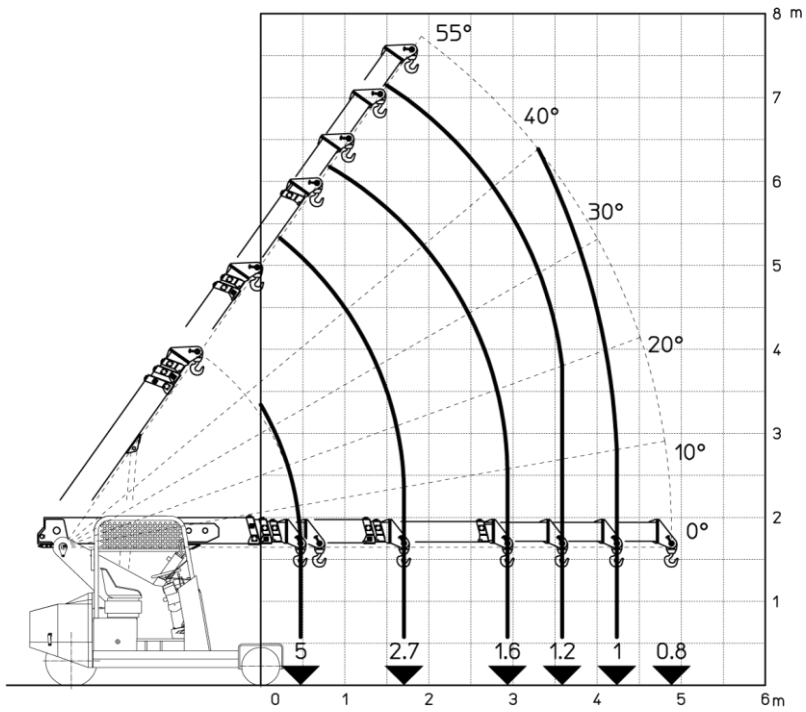


FEATURES

MAX CAPACITY 5.000 kg
MAX BOOM EXTENSION 4,88 m
MAX BOOM ANGLE 55°
MIN BOOM ANGLE 0°
WEIGHT 5.300 kg
CONFORMITY 2006/42 CE; 2014/30 CE;
 2014/35 CE; 2000/14 CE; EN 13000

| | | |
|--------------------------------------|---|------------------------|
| CHASSIS | 5 wheels structure made in high quality steel, with internal counterweights | |
| WHEELS | Front: n°4 superelastic wheels 16x7 – R8" Rear: n°1 superelastic wheels 23x10 – R12" | |
| TRACTION | Kubota D1105T, turbodiesel 3 cylinders engine, HP 24, kW 18 EU NRMMD 97/68 EC Stage IIIa | |
| TRANSMISSION | Automatic (hydrostatic). Max speed 8 Km/h. | |
| BRAKES | Hydraulically controlled foot operating brake. Lever mechanically controlled parking brake | |
| HYDRAULIC SYSTEM | Gear pump, max pressure 210 bar | |
| BOOM | Manufactured in high quality steel, composed by four elements: main boom and three telescopic booms with sequential hydraulic unthreading | |
| BOOM'S CONTROL | By proportional lever distributor in the cab | |
| PROGRESS COMMAND | By pedals and steering wheel in the cabin | |
| SAFETY SYSTEM | Electronic load moment indicator (LMI) with display showing lifted load and boom position | |
| STEERING | Rear steering axle with hydraulic motor (hydro guide) mounted on the fifth wheel | |
| TOTAL WEIGHT AND MAX CAPACITY | Total weight: Kg. 5.300 | Max Capacity: Kg 5.000 |
| OPTIONALS | Hydraulic winch; chain hoists; carry-deck; manual and hydraulic jibs; cable remote control; radio remote control; working light; fire extinguisher; fully hydraulic boom. | |

The values shown may vary depending on the configuration of the machine. The values shown may change at any time without notice



Rear steering with 180° rotation for maximum manoeuvrability



Operator's cabin with ergonomic controls and digital display for the electronic load moment indicator



Wide range of optional accessories for many applications

Valla
MANITEX

VALLA MANITEX S.R.L.
Via Leonardo da Vinci 12
29016 - Cortemaggiore (PC) - ITALY

PHONE: +39 0523 256411

EMAIL: info@valla.com

SITE: www.valla.com

cod. 891.056 rev. 01 ed. 06/2018