

CATERPILLAR®

300

EXCAVATORS



A New
Direction
On A Proven
Path

The Cat® 320.

New Power.

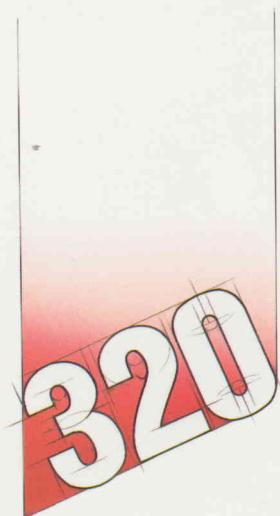
New Productivity.

New Performance.



Look beyond the sleek new design and you'll find an excavator with all the power, productivity, durability and versatility you've come to expect from Caterpillar.

The Cat 320. Advanced technology design, quality manufacturing and the strongest support system in the world add up to even more value than the E200B and 215D LC it replaces.








The Cat 325.

Works Harder...

Lasts Longer.



Introducing a new standard
of excellence to succeed
the 225D.

The Cat 325 is not only more
productive than the 225D it
replaces...but often can do
the work of a 30-metric-ton
machine. It's also more fuel
efficient, easier to operate and
built to withstand even tougher
job conditions. A superior
product...backed
by an exceptional dealer
organization...make the
325 the new industry standard
in its size class.








The Cat 330.

A Solid Investment.



Make way for the Cat 330, which replaces the E300B. This new excavator works harder and faster. Does a wider variety of jobs. Uses fuel more efficiently. And, of course, improves on Caterpillar's standards for durability and reliability.

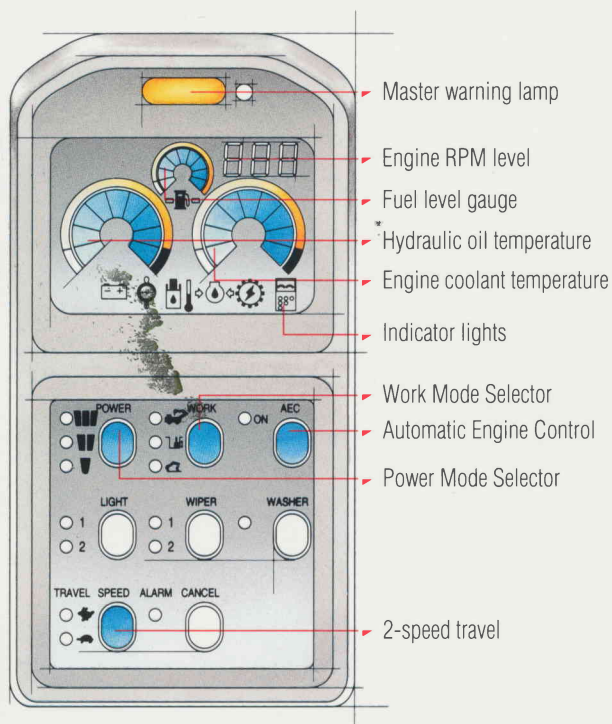
Caterpillar quality and your Cat Dealer's commitment to customer service make the new Cat 330 your best investment in this size class.







High-Efficiency Hydraulic System



300 Family Excavators feature an innovative hydraulic system. Hydraulic components are located close to one another to increase overall system efficiency. But the most impressive efficiency gains come from Caterpillar's exclusive Electronic Power Controller (EPC). This microcomputer manages the engine and hydraulic system, balancing engine speed and pump output for maximum control, productivity and fuel efficiency. The EPC meets any hydraulic demand quickly and smoothly...allowing the 325, for example, to utilize up to 98% of available engine power.

The EPC manages three power and work modes:

- A Power Mode Selector allows the operator to choose optimum engine speed and hydraulic flow to match the work situation. **Power Mode I** (approximately 60% of available horsepower) is sufficient for low-speed applications like pipe setting, sloping, site finishing, truck loading, trenching and close-quarters work. **Power Mode II** (85%) is best for jobs with normal requirements. And **Power Mode III** (100%) meets the demands of high-production loading and trenching, high-speed travel and hydraulic hammer use. Using the correct setting can save up to 20% in fuel and reduce noise levels.

- Three Work Modes allow the operator to concentrate hydraulic power where it's needed most. Select **swing circuit** for trenching, basement excavation, and truck loading when swing angles are large. Direct power to the **boom circuit** for mass excavation, deep trenching, heavy lifting, or truck loading when swing angles are short. Or choose **stick circuit** for leveling, slope finishing and other fine-control applications. Proper Work Mode Selector setting can shorten average cycle times by 5% to 10%.

Other features of the EPC:

- Manages the Automatic Engine Control (AEC), which reduces fuel consumption and sound levels by lowering engine speed when the implement and travel controls are not activated.
- A complete back-up system, activated by switches in the cab, that keeps the machine working in the unlikely event of an electronic system failure.
- Comprehensive self-diagnostics which allow a trained service person to quickly troubleshoot or adjust components in the electronic control system.

The 300 Family's high-efficiency hydraulic system teams with Caterpillar's advanced-technology engines to assure maximum performance and fuel efficiency. The 320, 325 and 330 are all equipped with proven Cat Engines.



More Flexibility



300 Family Excavators

were designed for maximum flexibility. Choose the right configuration to optimize machine performance in your application.

Booms and Sticks

Select the boom for your primary application, and provide for secondary jobs with sticks and buckets. (See Chart A.)

Buckets

The 300 Family offers eight bucket type options: standard and extreme service trenching, standard and extreme service excavation, standard and extreme service mass excavation, rock and utility. Previous models had only four bucket types.

Chart A

Reach (R)

Trenching, General Construction



Mass Excavation (M)

High-Production Excavation, Loading



Variable Geometry (VA)*

Tight-Quarters Work

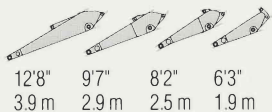


Long Reach (LR)*

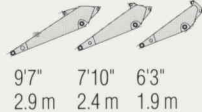
Reclamation, Irrigation, Dredging



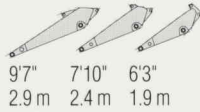
320 Boom: 18'7"/5.68 m



Boom: 17'1"/5.2 m



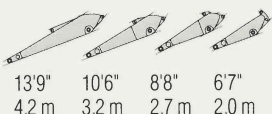
Boom: Adjustable from 91° when fully retracted to 165° when fully extended



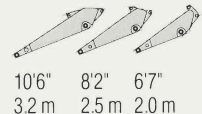
Boom: 29'0"/8.85 m



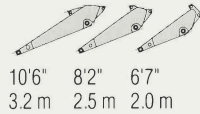
325 Boom: 20'2"/6.15 m



Boom: 18'2"/5.55 m



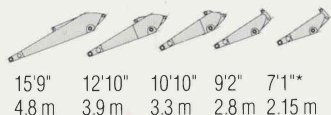
Boom: Adjustable from 95° when fully retracted to 165° when fully extended



Boom: 33'8"/10.2 m



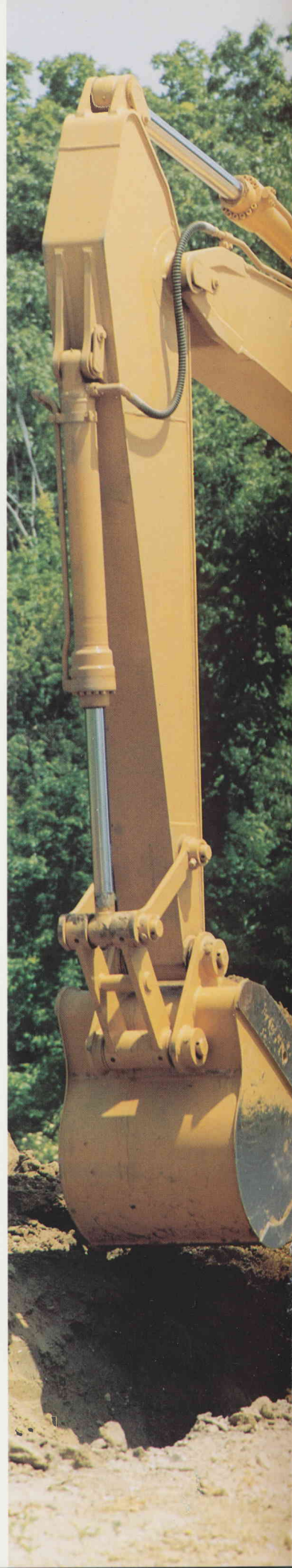
330 Boom: 21'4"/6.5 m



Boom: 20'3"/6.18 m



*Check sales area for availability.





Attachments

Equip your 300 Family Excavator with an auxiliary hydraulic package to further improve versatility. The valve is standard, and three packages are available for one-way, two-way, and one/two-way work tools. These will accommodate such attachments as hammers, tilting buckets and shears.

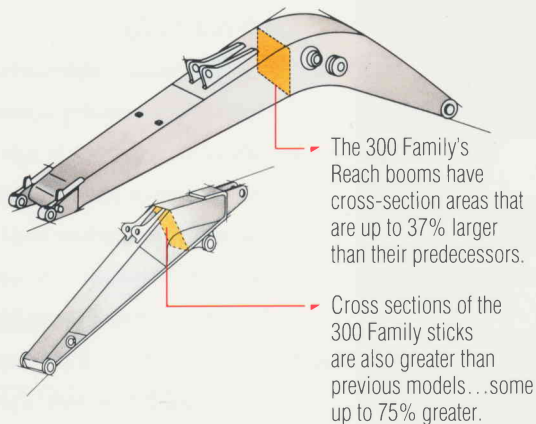
Undercarriage

Choose the standard undercarriage for applications requiring optimum turnability, such as work in tight areas... uneven or rocky conditions ...and where the machine must be constantly repositioned. The long (L) undercarriage provides extra lift capacity and stability. It's also recommended for use with larger buckets...and for jobs that require extra flotation. (See Chart B.)

Chart B

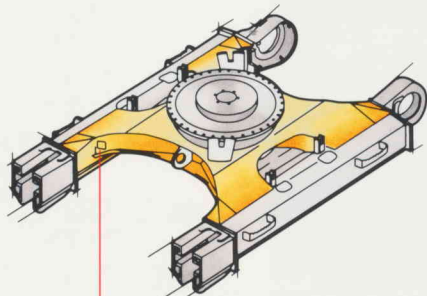
	Track Length	Gauge
320	13'4" 4.06 m	7'2" 2.20 m
320 L	14'7" 4.46 m	7'10" 2.39 m
325	14'4" 4.36 m	7'10" 2.39 m
325 L	15'4" 4.66 m	8'6" 2.59 m
330	15'0" 4.58 m	8'6" 2.59 m
330 L	16'5" 5.01 m	8'6" 2.59 m

Durability You Can Depend On



The 300 Family's Reach booms have cross-section areas that are up to 37% larger than their predecessors.

Cross sections of the 300 Family sticks are also greater than previous models...some up to 75% greater.



The 300 Family's "X"-shaped carbody, as compared to the "H"-shaped design, spreads stresses more evenly throughout roller frames.

All 300 Family models are durable like the rugged, reliable machines they replace. Innovative design, substantial structures and thoroughly tested components ensure many years of productive, dependable operation.

Front Linkage

- Large cross sections and stress-relieved boom and stick plates give the front linkage optimum weight and exceptional durability.
- Wide boom foot transmits stresses over larger area.
- Thick stick cylinder brackets endure high stick forces.
- Deep-hardened, chrome-plated steel linkage pins improve fatigue strength and durability.

Upperstructure

- Thicker, wider plates give the main frame extra strength, while optimizing stability and performance.
- Reinforced side doors resist damage.
- Fabricated counterweight has extra-thick steel plates at sides and bottom to give added protection from damage.



Lower Structure

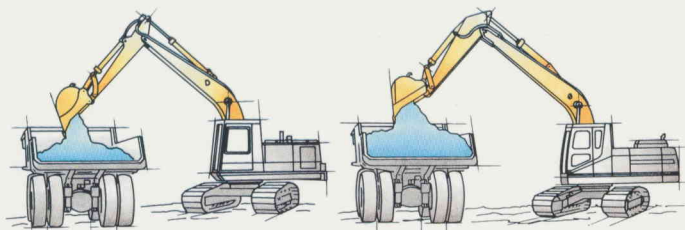
- "X"-shaped carbody features a thicker top plate than the "H"-shaped design. The "X" shape distributes stresses more evenly throughout the roller frames.
- Extra ground clearance...up to 36% more...extends wear life.
- Thicker track roller frames resist damage.
- Durable Caterpillar undercarriage, designed specifically for excavator applications, gives heavy-duty performance. Track links are sealed for longer life; rollers and idlers, sealed and Lifetime Lubricated.

Plus...

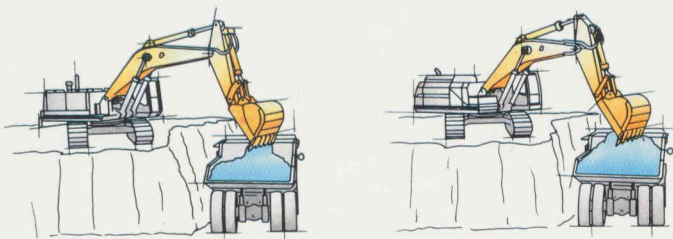
- All engine models feature high displacement and low horsepower/displacement ratios for longer service life.
- Exclusive XT-5 hydraulic hose and reusable couplings handle the tough demands of the 300 Family's hard-working hydraulic system.
- Quality electrical and electronic systems are engineered for long hours of reliable operation.



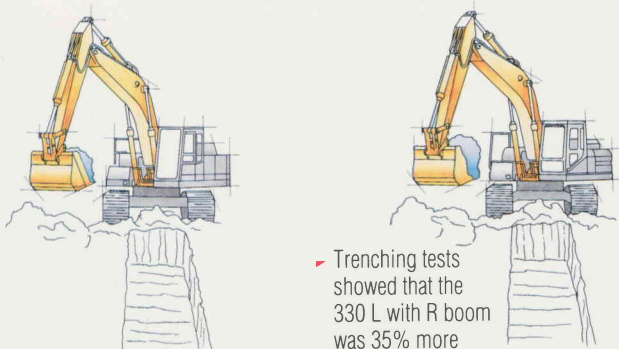
Consistently Superior Productivity and Performance



➤ In level truck loading tests, the 320 with M boom outperformed the E200B from 19% to 28%.



➤ In bench loading tests, the 325 with M boom demonstrated a 16% to 30% production advantage over the 225D LC.



➤ Trenching tests showed that the 330 L with R boom was 35% more productive than the E300B.

Each 300 Family model has been tested extensively to compare its productivity with the machine it replaces. Test highlights include:

• Level Truck Loading – 320 vs. E200B

The 320 with M boom moved 19% (Power Mode II) to 28% (Power Mode III) more material per hour than the E200B. The new machine also showed better overall ability to fill its bucket. In both Power Mode II and III, the 320 had a 23% fuel efficiency advantage.

• Bench Truck Loading – 325 vs. 225D LC & EL300B

The 325 with M boom showed a 16% (Power Mode II) to 30% (Power Mode III) production advantage and a 26% fuel efficiency advantage over the 225D LC in both settings. Faster cycle times and higher bucket fill factors made the difference. This 325 configuration also produced at levels equal to the EL300B, a 30-ton machine, but with over 20% better fuel efficiency.

• Trenching – 330 L vs. E300B

Trenching side-by-side in similar conditions, the 330 L with R boom running in Power Mode III was 35% more productive and 32% more fuel efficient than the E300B. Again, the new machine cycled faster and filled its bucket better.

• Slope Performance

The 300 Family demonstrated superior swing slope capability. The new machines, with full buckets, could swing on slopes that were 3% (330) to 33% (325) steeper.

• Travel

All new models feature two speeds for quick travel on level ground and surefooted performance on slopes. Tests confirmed the three new machines traveled from 5% to 30% faster than the previous models, depending on ground slope. Each 300 Family model also delivered superior drawbar pull, ranging from 4% to 21% greater than machines they replaced.

• Lift Capacity

300 Family models also provide definite lift capacity advantages. For example, over the side at ground level, 20'0"/6.0 m:

- The 330 L with R boom lifts an additional 2,400 lb/1150 kg (17%) compared to the EL300B.
- The 325 L with M boom has a 1,850 lb/870 kg (18%) advantage over the 225D LC.
- The 320 L with R boom outlifts the 215D LC by 1,300 lb/620 kg (18%).



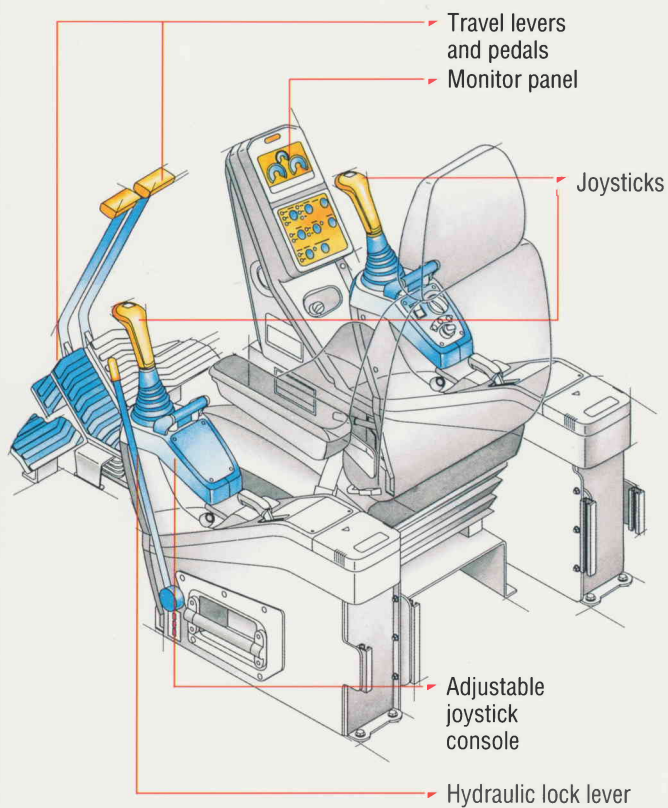


Comfortable Cab Improves Productivity



Step into the cab of a 300 Family Excavator and you'll find a comfortable, productive work environment.

- There's plenty of leg and head room for maximum operator comfort.
- Multi-adjustable seat keeps the operator productive throughout his shift.
- Joystick consoles slide forward and backward for easy access.
- Levers require less force, shorter stroke.
- Load-sensing hydraulics provide smooth, precise control.
- New dial-type throttle has 10 settings for easy, precise adjustment.
- Monitor panel, mounted in front of right console, keeps the operator informed of machine status.
- Wide, large windows assure excellent visibility in all directions.
- Large skylight offers upward visibility, more ventilation.
- Eight air vents with standard positive forced air ventilation and heater/defroster increase comfort. Optional air conditioner is available.
- Resiliently mounted cab and sound-suppressed panels reduce noise levels. Machine design moves engine and hydraulic noise away from the operator.





Easy Maintenance and Service, Cat Dealer Support



The 300 Family is easy to maintain and service, which translates into lower owning and operating costs.

- All daily maintenance can be performed from ground level or the service platform.
- Convenient grab handles and steps allow fast access to upperstructure.
- Slip-resistant walkways enhance safety.
- Central lubrication point for boom and stick cylinders makes lubing faster and easier.
- Pressure taps provide easier hydraulic systems testing and adjustment.
- Hose routings are designed to avoid tangles, giving excellent access to control valve.
- Electronic Power Control (EPC) has comprehensive self-diagnosis capability, allowing trained service people to check functions quickly and accurately.
- Automatic calibration of controller and governor reduces service time, assures greater accuracy.

The Cat Dealer Advantage

As with all products, your Cat Dealer stands ready to support the new 300 Family Excavators. Top-quality people will serve as your partners, working with you to maximize the value of your investment. They'll help you select the right excavator and options. And strive to reduce your owning and operating costs...from the day you take delivery throughout its life.

Take advantage of your Cat Dealer's excellent parts availability, money-saving maintenance management programs, economical repair options, wide selection of exchange components and rapid repair turnaround time. Put the Cat Dealer team to work for you...and watch your bottom line improve.

Stop in today and take A New Direction On A Proven Path...with Cat 300 Family Excavators.





320 L

	Reach Boom	Mass Excavation Boom	Long Reach Boom*	Variable Geometry Boom*
Power	128 FWHP/ 96 kW	128 FWHP/ 96 kW	128 FWHP/ 96 kW	128 FWHP/ 96 kW
Maximum Operating Weight	45,570 lb/ 20 670 kg	45,680 lb/ 20 720 kg	47,690 lb/ 21 630 kg	46,960 lb/ 21 300 kg
Maximum Reach at Ground Level	34'11"/ 10.6 m	30'1"/ 9.2 m	51'7" 15.7 m	31'4"/ 9.5 m
Maximum Digging Depth	24'10"/ 7.6 m	20'2"/ 6.1 m	39'0" 11.9 m	19'11"/ 6.1 m
Maximum Breakout Force	32,850 lb/ 14 900 kg	32,850 lb/ 14 900 kg	13,600 lb/ 6170 kg	32,850 lb/ 14 900 kg
Bucket Capacity Range	0.52-1.83 yd³/ 0.4-1.4 m³	0.52-1.83 yd³/ 0.4-1.4 m³	0.59-0.78 yd³/ 0.45-0.6 m³	0.52-1.83 yd³/ 0.4-1.4 m³

325 L

	Reach Boom	Mass Excavation Boom	Long Reach Boom*	Variable Geometry Boom*
Power	168 FWHP/ 125 kW	168 FWHP/ 125 kW	168 FWHP/ 125 kW	168 FWHP/ 125 kW
Maximum Operating Weight	60,570 lb/ 27 470 kg	60,970 lb/ 27 650 kg	63,590 lb/ 28 840 kg	61,820 lb/ 28 040 kg
Maximum Reach at Ground Level	37'9"/ 11.5 m	32'3"/ 9.8 m	60'5"/ 18.4 m	33'7"/ 10.2 m
Maximum Digging Depth	26'9"/ 8.2 m	21'5"/ 6.5 m	48'5"/ 14.7 m	21'0"/ 6.4 m
Maximum Breakout Force	39,000 lb/ 17 700 kg	41,000 lb/ 18 600 kg	13,260 lb/ 6015 kg	39,100 lb/ 17 700 kg
Bucket Capacity Range	0.75-2.12 yd³/ 0.6-1.6 m³	0.75-2.12 yd³/ 0.6-1.6 m³	0.59-0.78 yd³/ 0.45-0.59 m³	0.75-2.12 yd³/ 0.6-1.6 m³

330 L

	Reach Boom	Mass Excavation Boom
Power	222 FWHP/ 166 kW	222 FWHP/ 166 kW
Maximum Operating Weight	73,880 lb/ 33 510 kg	74,670 lb/ 33 870 kg
Maximum Reach at Ground Level	40'7"/ 12.4 m	35'8"/ 10.9 m
Maximum Digging Depth	29'2"/ 8.9 m	24'2"/ 7.4 m
Maximum Breakout Force	39,200 lb/ 17 800 kg	47,200 lb/ 21 400 kg
Bucket Capacity Range	0.88-2.25 yd³/ 0.7-1.7 m³	0.88-2.75 yd³/ 0.7-2.1 m³

* Check sales area for availability.
Materials and specifications subject to change without notice.



CATERPILLAR®

AEDC2903

1992 Caterpillar
Printed in U.S.A.